

## Schottky Rectifier, 440 A


**ADD-A-PAK**

### PRODUCT SUMMARY

$I_{F(AV)}$	440 A
-------------	-------

### MECHANICAL DESCRIPTION

The Generation 5 of ADD-A-PAK module combine the excellent thermal performance obtained by the usage of direct bonded copper substrate with superior mechanical ruggedness, thanks to the insertion of a solid copper baseplate at the bottom side of the device.

The Cu baseplate allow an easier mounting on the majority of heatsink with increased tolerance of surface roughness and improved thermal spread.

The Generation 5 of ADD-A-PAK module is manufactured without hard mold, eliminating in this way any possible direct stress on the leads.

The electrical terminals are secured against axial pull-out: they are fixed to the module housing via a click-stop feature already tested and proved as reliable on other Vishay HPP modules.

### FEATURES

- 150 °C  $T_J$  operation
- Low forward voltage drop
- High frequency operation
- Guard ring for enhanced ruggedness and long term reliability
- UL pending
- Totally lead (Pb)-free, RoHS compliant
- Designed and qualified for industrial level


**RoHS**  
COMPLIANT

### DESCRIPTION

The VSKCS440.. Schottky rectifier doubler module has been optimized for low reverse leakage at high temperature. The proprietary barrier technology allows for reliable operation up to 150 °C junction temperature.

Typical applications are in high current switching power supplies, plating power supplies, UPS systems, converters, freewheeling diodes, welding, and reverse battery protection.

### MAJOR RATINGS AND CHARACTERISTICS

SYMBOL	CHARACTERISTICS VALUE	ES	UNITS
$I_{F(AV)}$	Rectangular waveform	440	A
$V_{RRM}$		30	V
$I_{FSM}$	$t_p = 5 \mu s$ sine	27 000	A
$V_F$	220 Apk, $T_J = 125^\circ C$	0.58	V
$T_J$	Range	- 55 to 150	°C

### VOLTAGE RATINGS

PARAMETER SY	MBOL	VSKCS440/030P	UNITS
Maximum DC reverse voltage	$V_R$	30	V
Maximum working peak reverse voltage	$V_{RWM}$		

ABSOLUTE MAXIMUM RATINGS				
PARAMETER SYMBOL	L	TEST CONDITIONS	VALUES	UNITS
Maximum average forward current	$I_{F(AV)}$	50 % duty cycle at $T_C = 87^\circ\text{C}$ , rectangular waveform	440	A
per module per leg			220	
Maximum peak one cycle non-repetitive surge current	$I_{FSM}$	5 $\mu\text{s}$ sine or 3 $\mu\text{s}$ rect. pulse	27 000	
		10 ms sine or 6 ms rect. pulse	3000	
Non-repetitive avalanche energy	$E_{AS}$	$T_J = 25^\circ\text{C}$ , $I_{AS} = 20$ Amps, $L = 1$ mH	198	mJ
Repetitive avalanche current	$I_{AR}$	Current decaying linearly to zero in 1 $\mu\text{s}$ Frequency limited by $T_J$ maximum $V_A = 1.5 \times V_R$ typical	44	A

ELECTRICAL SPECIFICATIONS				
PARAMETER SYMBOL		TEST CONDITIONS	VALUES	UNITS
Maximum forward voltage drop	$V_{FM}^{(1)}$	220 A	0.65	V
		440 A	0.95	
		220 A	0.58	
		440 A	0.9	
Maximum reverse leakage current	$I_{RM}^{(1)}$	$T_J = 25^\circ\text{C}$	20	mA
		$T_J = 125^\circ\text{C}$	1120	
Maximum junction capacitance	$C_T$	$V_R = 5 V_{DC}$ (test signal range 100 kHz to 1 MHz) $25^\circ\text{C}$	14 800	pF
Typical series inductance	$L_S$	From top of terminal hole to mounting plane	5.0	nH
Maximum voltage rate of change	$dV/dt$	Rated $V_R$	10 000	V/ $\mu\text{s}$
RMS insulation voltage	$V_{INS}$	50 Hz, circuit to base, all terminals shorted (1 s)	3500	V

**Note**(1) Pulse width < 300  $\mu\text{s}$ , Duty cycle < 2 %

THERMAL - MECHANICAL SPECIFICATIONS				
PARAMETER SYMBOL		TEST CONDITIONS	VALUES	UNITS
Maximum junction and storage temperature range	T <sub>J</sub> , T <sub>Stg</sub>		- 55 to 150	°C
Maximum thermal resistance, junction to case per leg	R <sub>thJC D</sub>	C operation	0.30	°C/W
Maximum thermal resistance, case to heatsink	R <sub>thCS</sub>	Mounting surface, smooth and greased	0.1	
Approximate weight			110	g
			40	z.
Mounting torque ± 10 %	to heatsink		5	Nm
	busbar		4	
Case style		JEDEC	TO-240AA	

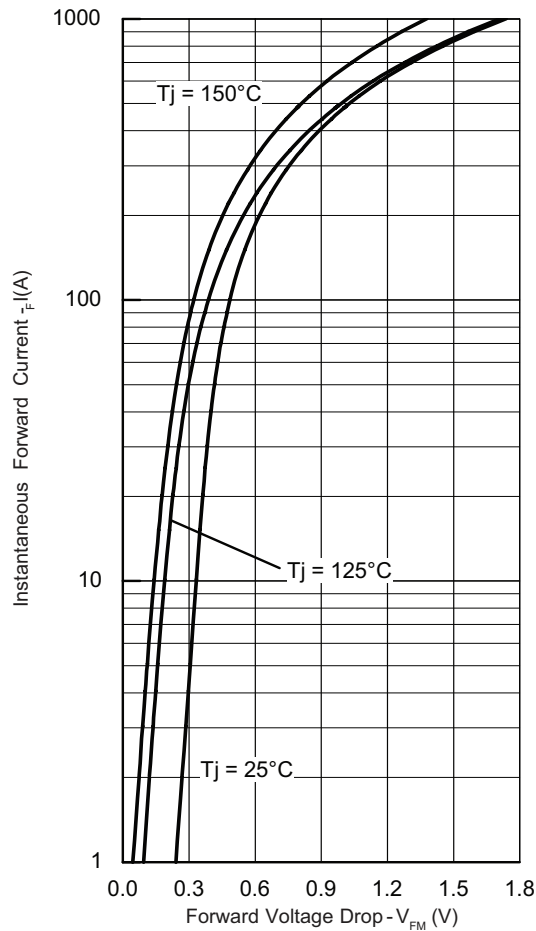


Fig. 1 - Maximum Forward Voltage Drop Characteristics

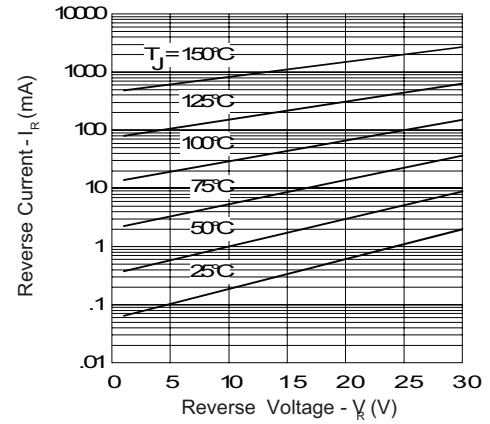


Fig. 2 - Typical Values of Reverse Current vs. Reverse Voltage

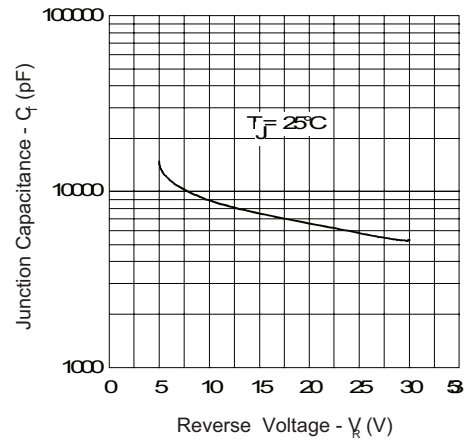
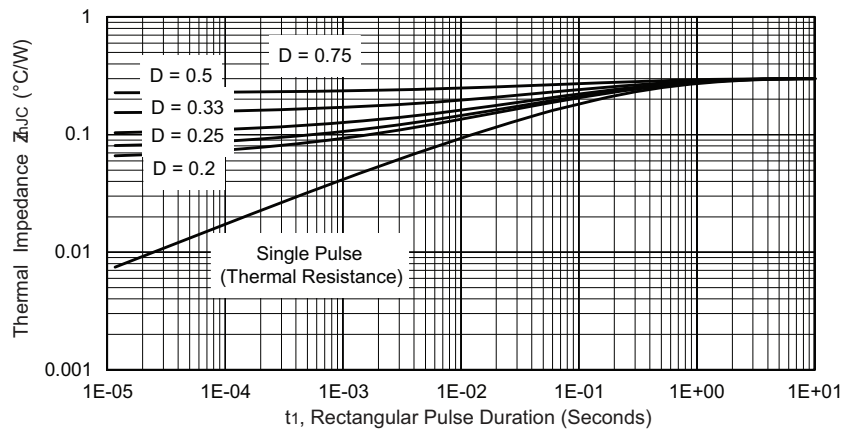


Fig. 3 - Typical Junction Capacitance vs. Reverse Voltage


Fig. 4 - Maximum Thermal Impedance  $Z_{thJC}$  Characteristics

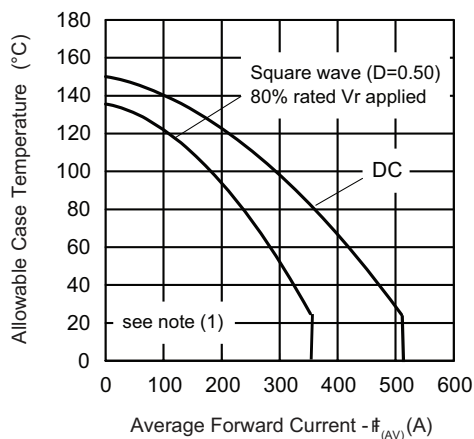


Fig. 5 - Maximum Allowable Case Temperature vs. Average Forward Current

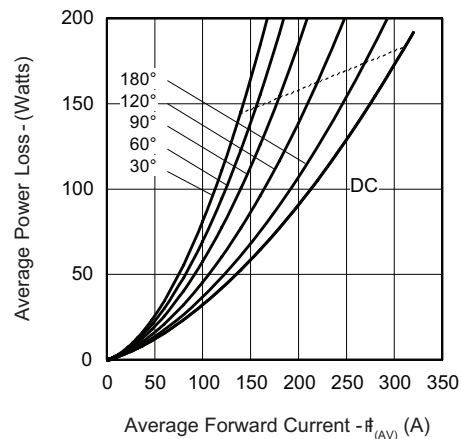


Fig. 6 - Forward Power Loss Characteristics

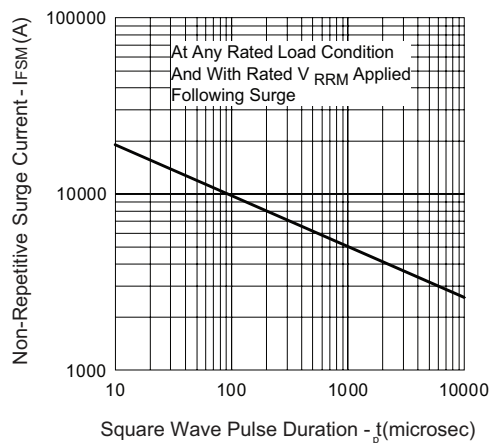


Fig. 7 - Maximum Non-Repetitive Surge Current

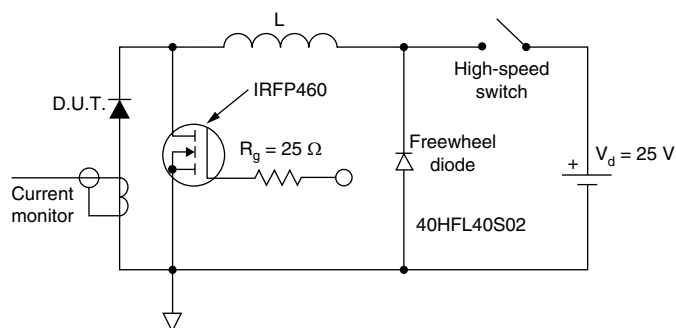


Fig. 8 - Unclamped Inductive Test Circuit

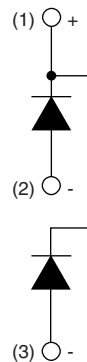
### Note

- (1) Formula used:  $T_C = T_J - (P_d + P_{dREV}) \times R_{thJC}$ ;  
 $P_d$  = Forward power loss =  $I_{F(AV)} \times V_{FM}$  at  $(I_{F(AV)}/D)$  (see fig. 6);  
 $P_{dREV}$  = Inverse power loss =  $V_{R1} \times I_R (1 - D)$ ;  $I_R$  at  $V_{R1} = 80\%$  rated  $V_R$

**ORDERING INFORMATION TABLE**

Device code	<b>VS</b>	<b>KC</b>	<b>S</b>	<b>44</b>	<b>0</b>	<b>/</b>	<b>030</b>	<b>P</b>
	①	②	③	④	⑤		⑥	⑦

- 1** - Vishay HPP
- 2** - Circuit configuration:  
KC = ADD-A-PAK - 2 diodes/common cathode
- 3** - S = Schottky diode
- 4** - Average rating (x 10)
- 5** - Product silicon identification
- 6** - Voltage rating (030 = 30 V)
- 7** - Lead (Pb)-free

**CIRCUIT CONFIGURATION**

LINKS TO RELATED DOCUMENTS	
Dimensions	<a href="http://www.vishay.com/doc?95174">http://www.vishay.com/doc?95174</a>



### Disclaimer

All product specifications and data are subject to change without notice.

Vishay Intertechnology, Inc., its affiliates, agents, and employees, and all persons acting on its or their behalf (collectively, "Vishay"), disclaim any and all liability for any errors, inaccuracies or incompleteness contained herein or in any other disclosure relating to any product.

Vishay disclaims any and all liability arising out of the use or application of any product described herein or of any information provided herein to the maximum extent permitted by law. The product specifications do not expand or otherwise modify Vishay's terms and conditions of purchase, including but not limited to the warranty expressed therein, which apply to these products.

No license, express or implied, by estoppel or otherwise, to any intellectual property rights is granted by this document or by any conduct of Vishay.

The products shown herein are not designed for use in medical, life-saving, or life-sustaining applications unless otherwise expressly indicated. Customers using or selling Vishay products not expressly indicated for use in such applications do so entirely at their own risk and agree to fully indemnify Vishay for any damages arising or resulting from such use or sale. Please contact authorized Vishay personnel to obtain written terms and conditions regarding products designed for such applications.

Product names and markings noted herein may be trademarks of their respective owners.