

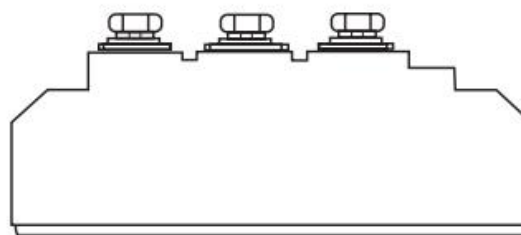
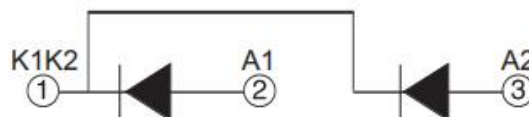
Modules Standard Diodes

FEATURES

- High surge current capability
- Low forward voltage drop
- Minimum Lot-to-Lot variations for robust device performance and reliable operation

APPLICATIONS

- PV combiner box
- Battery charges
- Converters
- Power supplies



ABSOLUTE MAXIMUM RATINGS

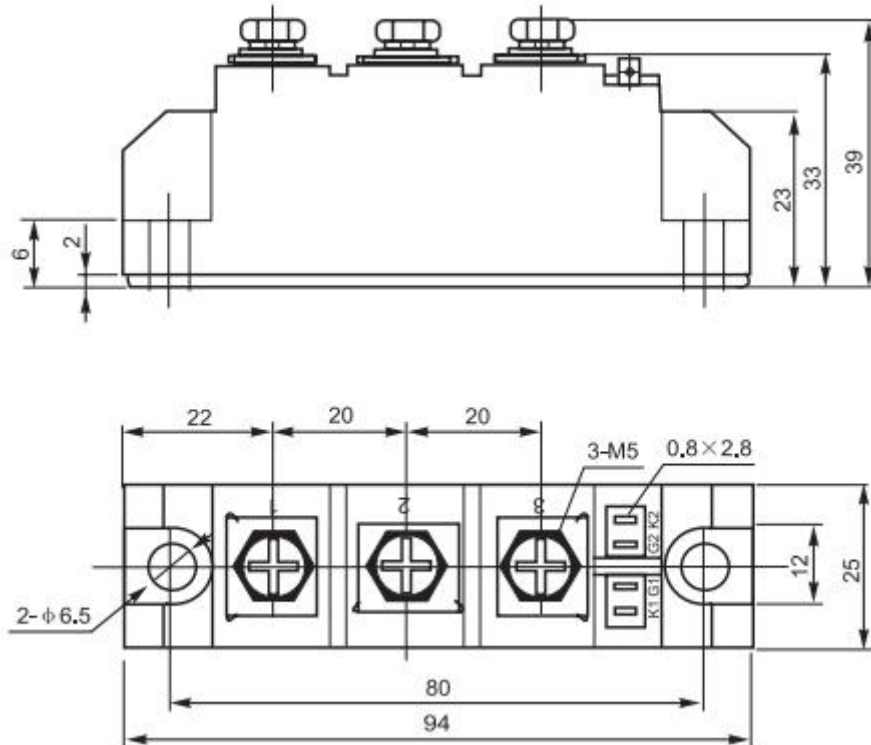
SYMBOL	PARAMETER	CONDITIONS	VALUE	UNIT
V_{RRM}	Repetitive Peak Reverse Voltage		1600	V
$I_{F(AV)}$	Average Forward Current	180° conduction, half sine wave $T_C=100^{\circ}\text{C}$, 50Hz	110	A
I_{FSM}	Surge Forward Current	$t=10\text{ms}$, $V_R=0.6V_{RRM}$, half sine wave	2.6	kA
I^2t	I^2t for fusing		34.4	$\text{A}^2\text{s}\cdot 10^3$
T_J	Junction Temperature		-40~125	$^{\circ}\text{C}$
T_{stg}	Storage Temperature Range		-40~125	$^{\circ}\text{C}$
V_{FM}	Forward Voltage drop	$I_F=330\text{A}$, $T_J=25^{\circ}\text{C}$	1.45	V

THERMAL CHARACTERISTICS

SYMBOL	PARAMETER	MAX	UNIT
$R_{th\ j-c}$	Thermal Resistance, Junction to Case	0.35	$^{\circ}\text{C}/\text{W}$

PACKAGE OUTLINE

Dimensions in mm (1mm = 0.0394")



NOTICE:

ISC reserves the rights to make changes of the content herein the datasheet at any time without notification. The information contained herein is presented only as a guide for the applications of our products.

ISC products are intended for usage in general electronic equipment. The products are not designed for use in equipment which require specialized quality and/or reliability, or in equipment which could have applications in hazardous environments, aerospace industry, or medical field. Please contact us if you intend our products to be used in these special applications.

ISC makes no warranty or guarantee regarding the suitability of its products for any particular purpose, nor does ISC assume any liability arising from the application or use of any products, and specifically disclaims any and all liability, including without limitation special, consequential or incidental damages.