

HITACHI

Hitachi Displays, Ltd.

Date: Jul. 10, 2006

For Messrs. Hitachi Europe Ltd.
CUSTOMER'S ACCEPTANCE SPECIFICATIONS


TX26D55VM1CAA

CONTENTS

No.	Item	Sheet No.	Page
-	COVER	3284PS 2601-TX26D55VM1CAA-1	1-1/1
-	RECORD OF REVISION	3284PS 2602-TX26D55VM1CAA-1	2-1/1
-	DESCRIPTION	3284PS 2603-TX26D55VM1CAA-1	3-1/1
1	ABSOLUTE MAXIMUM RATINGS	3284PS 2604-TX26D55VM1CAA-1	4-1/2-2/2
2	OPTICAL CHARACTERISTICS	3284PS 2605-TX26D55VM1CAA-1	5-1/2-2/2
3	ELECTRICAL CHARACTERISTICS	3284PS 2606-TX26D55VM1CAA-1	6-1/2-2/2
4	BLOCK DIAGRAM	3284PS 2607-TX26D55VM1CAA-1	7-1/1
5	INTERFACE PIN CONNECTION	3284PS 2608-TX26D55VM1CAA-1	8-1/2-2/2
6	INTERFACE TIMING	3284PS 2609-TX26D55VM1CAA-1	9-1/3-3/3
7	DIMENSIONAL OUTLINE	3284PS 2610-TX26D55VM1CAA-1	10-1/2-2/2
8	DESIGNATION OF LOT MARK	3284PS 2611-TX26D55VM1CAA-1	11-1/2-2/2
9	COSMETIC SPECIFICATIONS	3284PS 2612-TX26D55VM1CAA-1	12-1/3-3/3
10	PRECAUTIONS	3284PS 2613-TX26D55VM1CAA-1	13-1/4-4/4
-	-	-	-

Please return 1 copy with your signature on this page for approval.

Accepted by : _____

Proposed by : 

Date : _____

CAS-S06-181

Hitachi Displays, Ltd.	Sh. No.	3284PS 2601-TX26D55VM1CAA-1	Page 1-1/1
------------------------	------------	-----------------------------	------------

RECORD OF REVISION

Date	Old Sheet No.	Summary
	New Sheet No.	

DESCRIPTION

<26cm (10.4 inch) VGA>

In the case of applying this product for such as control and safety device of transportation facilities (airplane, train, automobile, ship, etc), equipments aiming for rescue and security, and the other safety related devices which should secure higher reliability and safety, please make it sure that proper countermeasure such as fail-safe functions and enough system design for the protection are mandatory.

Please do not apply this product for equipments or devices which need exceedingly high reliability, such as aerospace applications, telecommunication facilities (trunk lines), nuclear related equipments or plants, and critical life support devices or applications.

This specification is applied to the following TFT Liquid Crystal Display Module with Back-light unit.

Note : Inverter device for Back-light is not built in and so it needs to be prepared on yoursides.

- Type name : TX26D55VM1CAA
- Display Area : H211.2×V158.4 [mm]
- Display Dots : H(640×3)×V480 [dots]
(Display Pixels) (H640×V480 pixels)
- Resolution : VGA
- Voltage of VDD : 3.3V
- Pixel Pitch : H0.330×V0.330 [mm]
- Color Pixel Arrangement : R·G·B Vertical Stripe
- Display Mode : Transmissive &
Normally White Mode
- Color Number : 262k Colors
- Dimensions Outlines : H243.0 TYP.×V181.6 TYP.×t12.5 MAX. [mm]
- Weight : 450 TYP. [g]
- Interface : CMOS
- Surface Polarizing Film : Anti-Glare Polarizing Film
(Hard Coat 3H:Pencil Hardness)
- Back-light : Two Cold Cathode Fluorescent Lamp
(Side-Light type:Both Long Side)
Back-light inverter is not
contained in Module.

Hitachi Displays, Ltd.	Date	Jul. 10, 2006	Sh. No.	3284PS 2603-TX26D55VM1CAA-1	Page	3-1/1
------------------------	------	---------------	------------	-----------------------------	------	-------

1. ABSOLUTE MAXIMUM RATINGS

1.1 ENVIRONMENTAL ABSOLUTE MAXIMUM RATINGS

ITEM	OPERATING		STORAGE		UNIT	NOTE
	MIN.	MAX.	MIN.	MAX.		
Ambient Temperature	-20	70	-30	70	°C	1)
Humidity	2)		2)		%RH	1)
Vibration	—	4.9 (0.5G)	—	19.6 (2G)	m/s ²	3)
Shock	—	29.4 (3G)	—	490 (50G)		4)
Corrosive Gas	NOT ACCEPTABLE		NOT ACCEPTABLE		—	
Illuminance at LCD surface	—	50,000	—	50,000	lx	

Note 1) Environmental temperature and humidity of this unit, not of system installed with this unit.

Operating temperature means functional temperature without regard to optical performance.

Life characteristic is specified at 25±5 degree.

At low temperature the brightness of CFL drop and the life time of CFL become to be short. (especially below 0 degree)

- 2) Ambient temp. $T_a \leq 40^\circ\text{C}$: 85%RH MAX. without condensation
 $T_a > 40^\circ\text{C}$: Absolute humidity must be lower than the saturated vapor of 85%RH at 40°C. without condensation

- 3) Vibration frequency : 20~50Hz. (Except resonance frequency)

- 4) 3ms, X·Y·Z·Z'

1.2 ELECTRICAL ABSOLUTE MAXIMUM RATINGS

(1) TFT LIQUID CRYSTAL DISPLAY MODULE

V_{SS}=0V

ITEM	SYMBOL	MIN.	MAX.	UNIT	NOTE
Power Supply Voltage	VDD	0	4.0	V	
Input signal Voltage for logic	V _I	-0.2	VDD+0.2	V	1)
Electrostatic Durability	VESD0	±100		V	2), 3)
	VESD1	± 8		kV	4), 5)

Note 1) It is applied to pixel data signal and clock signal.

2) Electric discharge constant 200 pF-0Ω, 25°C-70%RH.

3) The I/F Connector pins are subjected.

4) Electric discharge constant 200 pF-250Ω, 25°C-70%RH.

5) The Surface of Metal bezel and LCD are subjected.

(2) BACK-LIGHT UNIT

GND=0V

ITEM	SYMBOL	MIN.	MAX.	UNIT	NOTE
Lamp Current	IL	0	7.0	mArms	1)
Lamp Voltage	VL	0	1800	Vrms	2)

Note 1) The specification shall be applied to each CCFL.

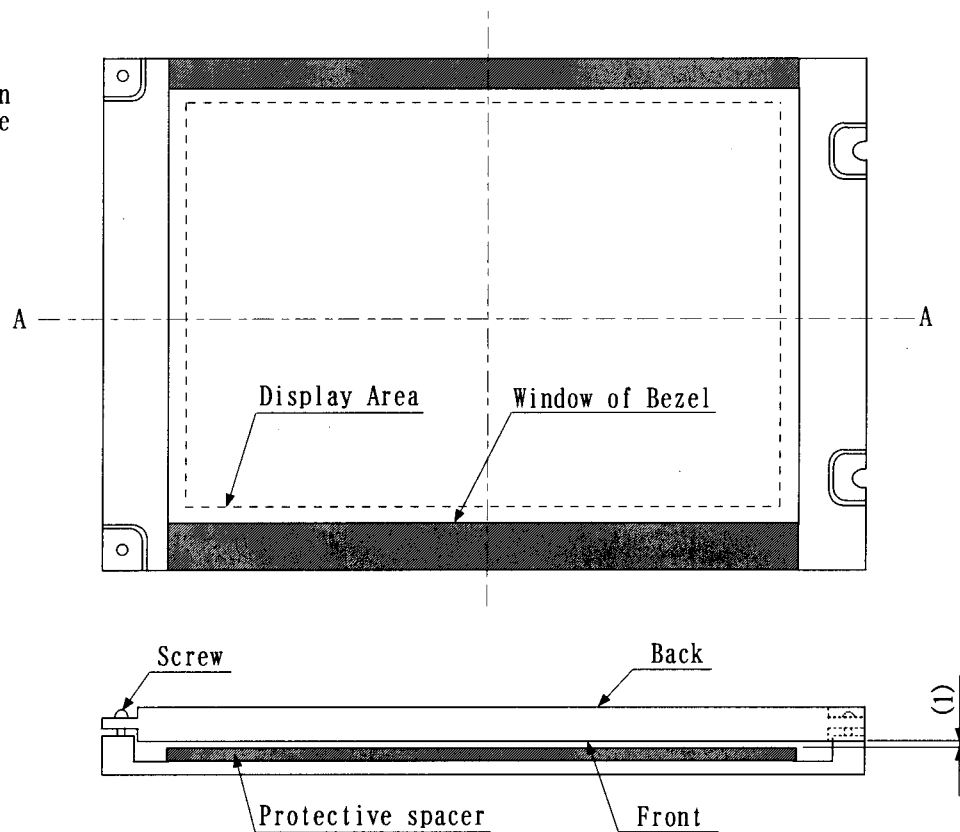
The specification is defined at ground line.

- 2) The specification shall be applied at connector pins for a CCFL at start-up.

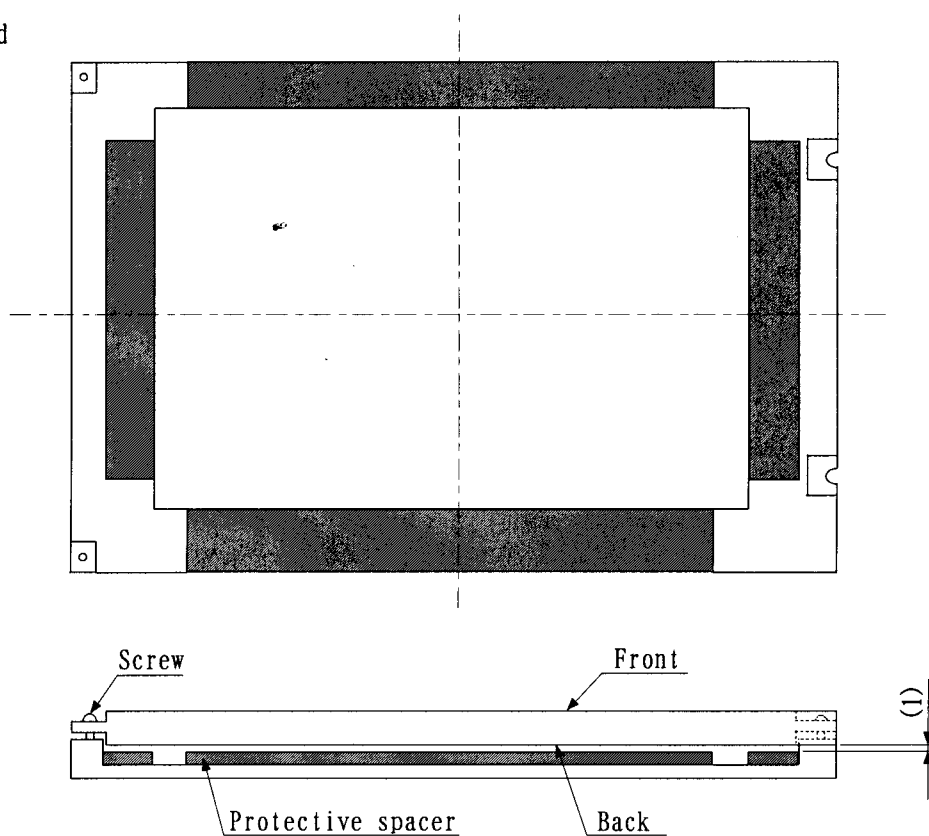
Hitachi Displays, Ltd.	Date	Jul. 10, 2006	Sh. No.	3284PS 2604-TX26D55VM1CAA-1	Page	4-1/2
------------------------	------	---------------	---------	-----------------------------	------	-------

Adding protective spacer at shock & vibration test
Shaded area is to be supported with additional spacer.

- (1) This protective spacer is to be added at shock and vibration test on the front side



- (2) This protective spacer is to be added shock and vibration test on the back side



2. OPTICAL CHARACTERISTICS

We can guarantee only initial characteristics.

The following items are measured on the conditions that this unit operation (TFT panel and Back-light) and measuring systems are stable. (more than 30minutes' operation)

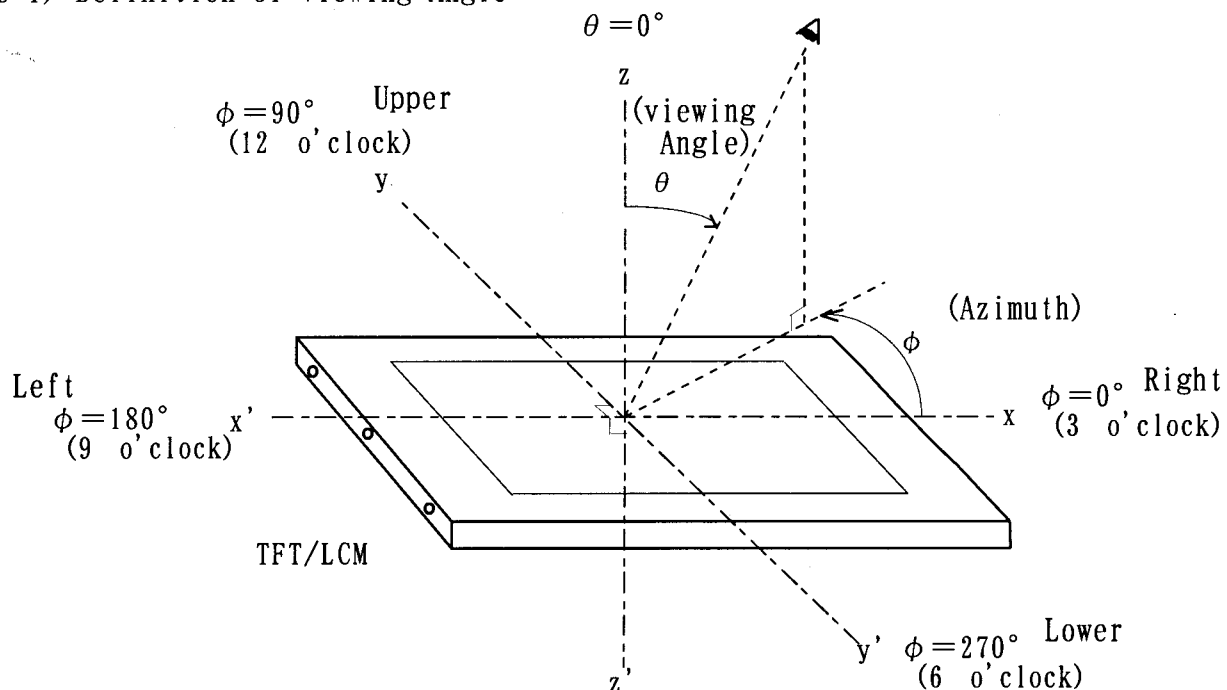
The ambient light excluding The Back-light unit is nothing.

- Measuring equipment : TOPCON BM-7, Prichard 1980A, or equivalent
- Measuring point : Active area center

Temperature of LCD= $25 \pm 3^{\circ}\text{C}$, $V_{DD}=3.3\text{V}$, $f_v=60\text{Hz}$, $I_L=6.0\text{mA}$,
Back-Light operation Frequency=50kHz

ITEM		SYMBOL	CONDITION	MIN.	TYP.	MAX.	UNIT	NOTE
Contrast Ratio		CR	$\theta = 0^{\circ}$ Note 1)	200	500	—	—	2)
Response Time	RISE	tr		—	30	—	ms	3)
	FALL	tf		—	20	—		
Brightness (White)		Bwh		—	350	—	cd/m ²	
Color of CIE	Red	x		0.59	0.63	0.67	—	
		y		0.30	0.34	0.38		
	Green	x		0.28	0.32	0.36		
		y		0.55	0.59	0.63		
	Blue	x		0.10	0.14	0.18		
		y		0.05	0.09	0.13		
	White	x		0.28	0.32	0.36		
		y		0.29	0.33	0.37		
Viewing Angle (CR ≥ 10)	x-x	θ_x	$\phi = 0^{\circ}$	50	60	—	deg	
		$\theta_{x'}$	$\phi = 180^{\circ}$	50	60	—		
	y-y	θ_y	$\phi = 90^{\circ}$	50	60	—		
		$\theta_{y'}$	$\phi = 270^{\circ}$	50	60	—		

Note 1) Definition of Viewing Angle



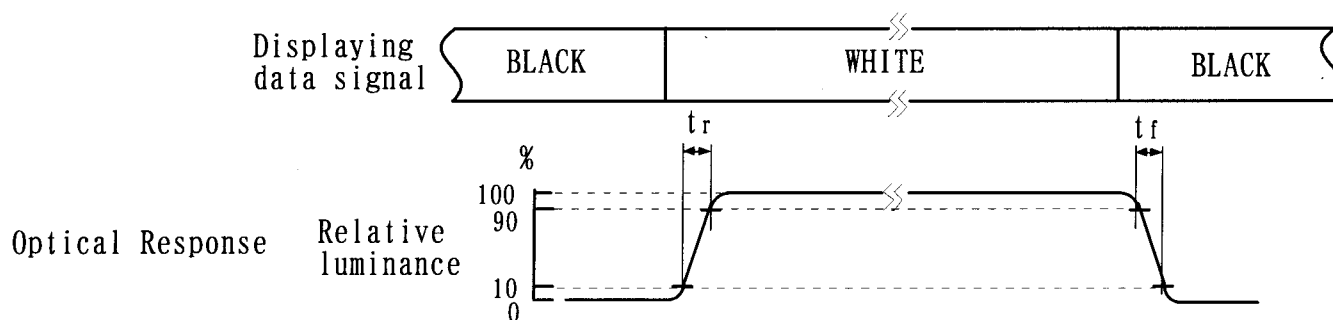
Note 2) Definition of Contrast Ratio (CR)

$$CR = \frac{\text{Brightness when displaying White raster}}{\text{Brightness when displaying Black raster}}$$

These Brightness is measured on the center of screen.

* Measurement in the darkroom.

Note 3) Definition of Response Time



3. ELECTRICAL CHARACTERISTICS

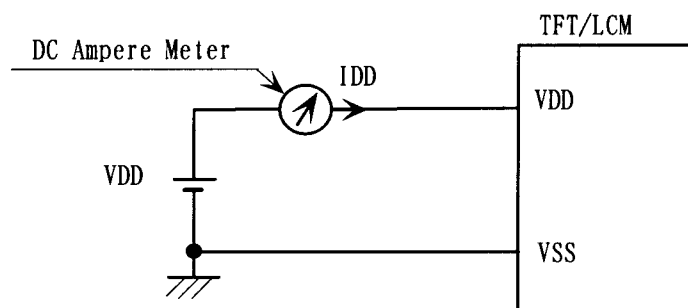
(1) TFT LIQUID CRYSTAL DISPLAY MODULE

Ta=25°C, Vss=0V

ITEM	SYMBOL	MIN.	TYP.	MAX.	UNIT	NOTE
Power Supply Voltage	VDD	3.0	3.3	3.6	V	
Input Voltage for Logic Signal	Hi	V _{IH}	2.0	—	mV	1)
	Lo	V _{IL}	VSS	—		
Power Supply Current	I _{DD}	—	190	300	mA	2), 3)
Vsync Frequency	f _v	—	60	70	Hz	
Hsync Frequency	f _H	—	31.6	38	kHz	
DCLK Frequency	f _{CLK}	—	25	29	MHz	

Note 1) The specification is applicable to Display Data Signal pin, Timing Signal pin.

2) f_v=60Hz, f_{CLK}=25MHz, VDD=3.3V, DC Current is measured with the method as below.



Typical value is measured when displaying Black Pattern.

Maximum is measured when displaying Vertical-stripe(Black-7 Gray scale)

- 3) 0.63A fuse is built in the unit. Current capacity for VDD power supply should be larger than 2A, so that the fuse built in the unit(Maximum) could appropriately work in the abnormal.

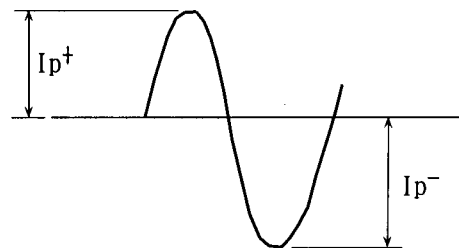
(2) BACK-LIGHT UNIT

Ta=25°C, GND=0V

ITEM	SYMBOL	MIN.	TYP.	MAX.	UNIT	NOTE
Lamp Current	IL	4.0	6.0	6.5	mArms	1), 2)
Lamp Voltage	VL	—	490	—	Vrms	7)
Frequency	fL	50	—	70	kHz	3)
Starting Lamp Voltage	Vs	950	—	—	Vrms	Ta=25°C 4), 5)
		1200	—	—		Ta=-10°C 4), 5)

Note 1) IL is Current of GND side.

- 2) Higher IL cause the short life time of CFL.
- 3) Lamp frequency may produce interference with Hsync frequency, causing beat or flicker on the display.
- 4) Starting Lamp Voltage should be more than Vs(Min).
- 5) Invertor open output voltage please makes the design which 1 seconds or more can be continued at least. When it is below that, there are times when the lamp dose not light up.
- 6) Quality of the invertor produces big effect on illumination efficiency and life of back light. When it arranges the invertor, that back light and flicker etc. the illumination malfunction of back light does not occur, we request verification. In addition, as for verification as much as possible we recommend that it executes when it is close to the apparatus. In addition, as for the invertor, overvoltage, use you ask those which have the safe protection circuit such as the overcurrent inspection circuit and the discharge corrugated inspection circuit.
- 7) IL=6mArms
- 8) Distribution difference of lamp surface temperature should be less than 5°C.
- 9) When the lighting wave form of the invertor is asymmentry, the inclination of mercury is generated. Therefore, please adjust the unbalance ($|Ip^+ - Ip^-| / Irms \times 100\%$) of the lighting current wave form to 10% or less, and adjust the wave high rate (Ip^+ (or Ip^-) / $Irms$) to 1.2~1.63.

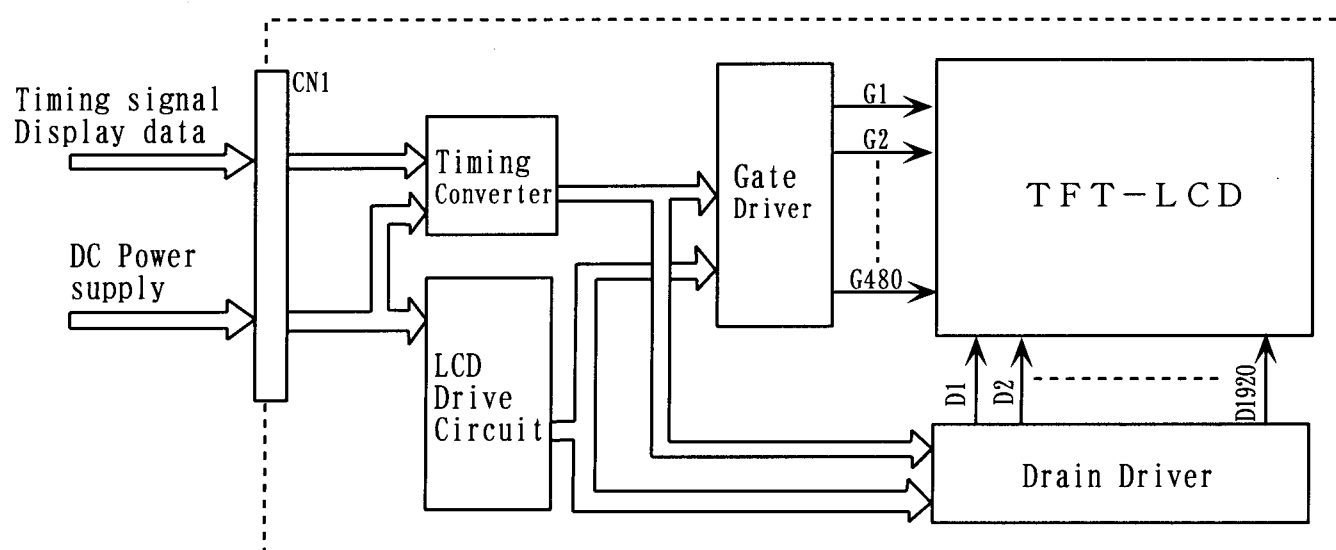


Invertor current wave form.

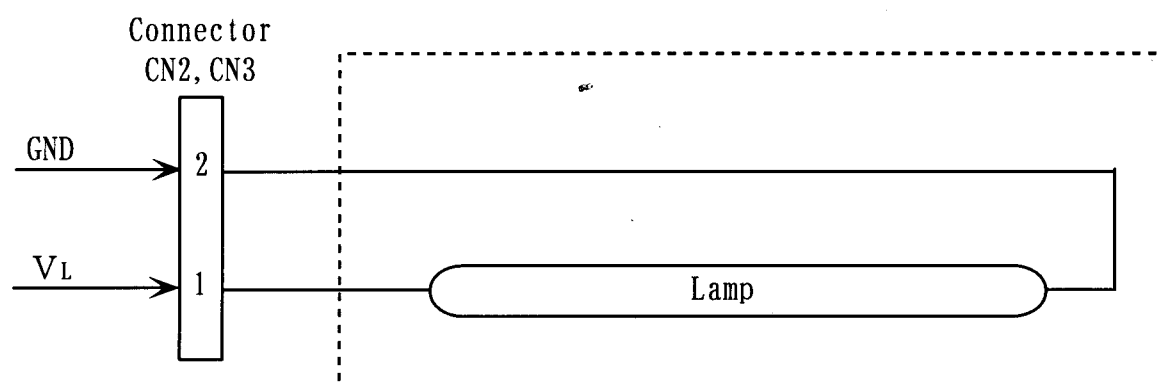
- 10) Recommendation invertor : Hitachi Lighting, Ltd.
Type name : INVC655 suitable item

4. BLOCK DIAGRAM

(1) TFT-LIQUID CRYSTAL DISPLAY MODULE



(2) BACK-LIGHT UNIT



Color of wires CFL to CN2, CN3

1	(VL)	: Pink
2	(GND)	: Blue

5. INTERFACE PIN CONNECTION

(1) TFT-LIQUID CRYSTAL DISPLAY MODULE

CN1 《HIROSE: FH12-32S-0.5SH(55)》 5)

Pin No.	SYMBOL	FUNCTION	NOTE
1	VSS		2)
2	DCLK	Clock Signal	
3	NC		4)
4	NC		4)
5	VSS		2)
6	R0	Red Data Signal (LSB)	
7	R1	Red Data Signal	
8	R2	Red Data Signal	
9	R3	Red Data Signal	
10	R4	Red Data Signal	
11	R5	Red Data Signal (MSB)	
12	VSS		2)
13	G0	Green Data Signal (LSB)	
14	G1	Green Data Signal	
15	G2	Green Data Signal	
16	G3	Green Data Signal	
17	G4	Green Data Signal	
18	G5	Green Data Signal (MSB)	
19	VSS		2)
20	B0	Blue Data Signal (LSB)	
21	B1	Blue Data Signal	
22	B2	Blue Data Signal	
23	B3	Blue Data Signal	
24	B4	Blue Data Signal	
25	B5	Blue Data Signal (MSB)	
26	VSS		2)
27	DTMG	Display Timing Signal	
28	VDD	Power Supply 3.3V (typical)	1)
29	VDD	Power Supply 3.3V (typical)	1)
30	TEST	TEST Pin	3)
31	NC		4)
32	VSS		2)

Notes 1) All VDD pins shall be connected to +3.3V(Typ.).

2) All VSS pins shall be grounded. Metal bezel is internally connected to VSS.

3) Keep open. Hitachi test use only.

4) Unconnected to the module

5) This connector is gilding. FFC or FPC to connect should use a gilding.

(2) BACK-LIGHT UNIT

CN2, CN3 《JST:BHR-02(8.0)VS-1N》

Pin No.	SYMBOL	FUNCTION	NOTE
1	VL	Power Supply	
2	GND	GND (0V)	

RELATIONSHIP BETWEEN DISPLAYED COLOR AND INPUT DATA

INPUT DATA COLOR		R DATA						G DATA						B DATA					
		R5	R4	R3	R2	R1	R0	G5	G4	G3	G2	G1	G0	B5	B4	B3	B2	B1	B0
		MSB					LSB	MSB					LSB	MSB					LSB
BASIC COLOR	BLACK	0	0	0	0	0	0	0	0	0	0	0	0	0	0	0	0	0	0
	RED(63)	1	1	1	1	1	1	0	0	0	0	0	0	0	0	0	0	0	0
	GREEN(63)	0	0	0	0	0	0	1	1	1	1	1	1	0	0	0	0	0	0
	BLUE(63)	0	0	0	0	0	0	0	0	0	0	0	0	1	1	1	1	1	1
	CYAN	0	0	0	0	0	0	1	1	1	1	1	1	1	1	1	1	1	1
	MAGENTA	1	1	1	1	1	1	0	0	0	0	0	0	1	1	1	1	1	1
	YELLOW	1	1	1	1	1	1	1	1	1	1	1	1	0	0	0	0	0	0
	WHITE	1	1	1	1	1	1	1	1	1	1	1	1	1	1	1	1	1	1
RED	BLACK	0	0	0	0	0	0	0	0	0	0	0	0	0	0	0	0	0	0
	RED(1)	0	0	0	0	0	1	0	0	0	0	0	0	0	0	0	0	0	0
	RED(2)	0	0	0	0	1	0	0	0	0	0	0	0	0	0	0	0	0	0

	RED(61)	1	1	1	1	0	1	0	0	0	0	0	0	0	0	0	0	0	0
	RED(62)	1	1	1	1	1	0	0	0	0	0	0	0	0	0	0	0	0	0
	RED(63)	1	1	1	1	1	1	0	0	0	0	0	0	0	0	0	0	0	0

GREEN	BLACK	0	0	0	0	0	0	0	0	0	0	0	0	0	0	0	0	0	0
	GREEN(1)	0	0	0	0	0	0	0	0	0	0	0	1	0	0	0	0	0	0
	GREEN(2)	0	0	0	0	0	0	0	0	0	0	1	0	0	0	0	0	0	0

	GREEN(61)	0	0	0	0	0	0	1	1	1	1	0	1	0	0	0	0	0	0
	GREEN(62)	0	0	0	0	0	0	1	1	1	1	1	0	0	0	0	0	0	0
	GREEN(63)	0	0	0	0	0	0	1	1	1	1	1	1	0	0	0	0	0	0

BLUE	BLACK	0	0	0	0	0	0	0	0	0	0	0	0	0	0	0	0	0	0
	BLUE(1)	0	0	0	0	0	0	0	0	0	0	0	0	0	0	0	0	1	0
	BLUE(2)	0	0	0	0	0	0	0	0	0	0	0	0	0	0	0	1	0	0

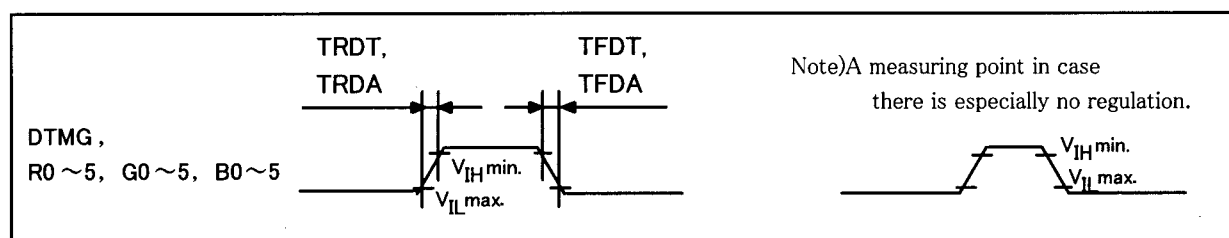
	BLUE(61)	0	0	0	0	0	0	0	0	0	0	0	0	1	1	1	1	0	1
	BLUE(62)	0	0	0	0	0	0	0	0	0	0	0	0	1	1	1	1	1	0
	BLUE(63)	0	0	0	0	0	0	0	0	0	0	0	0	1	1	1	1	1	1

- Note 1) Definition of gray scale :
 Color(n) --- number in parenthesis indicates gray scale level.
 Larger number corresponds to brighter level.
- 2) Data Signal : 1:High, 0:Low

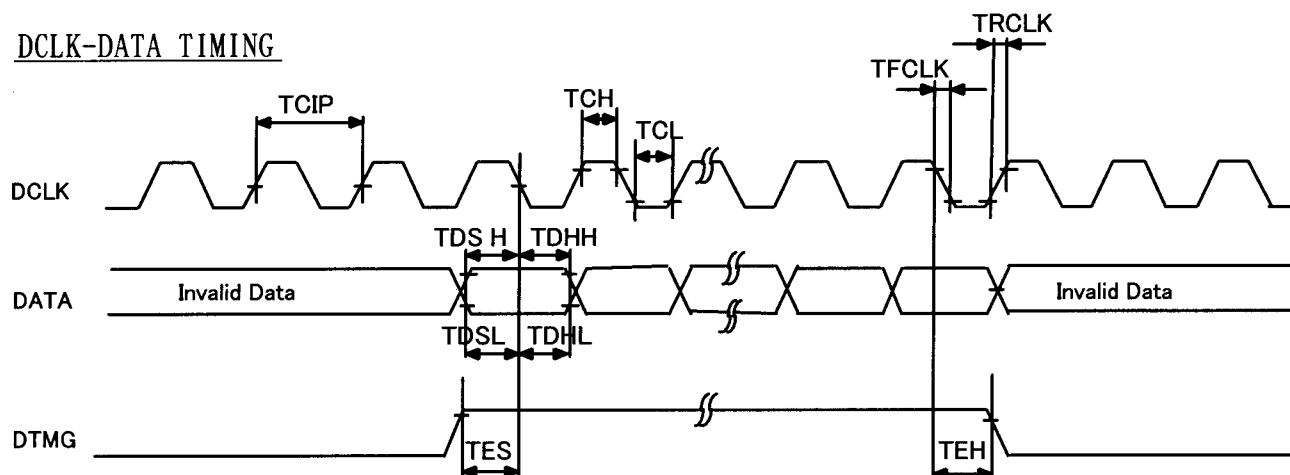
6. INTERFACE TIMING

(1) TIMING CHART

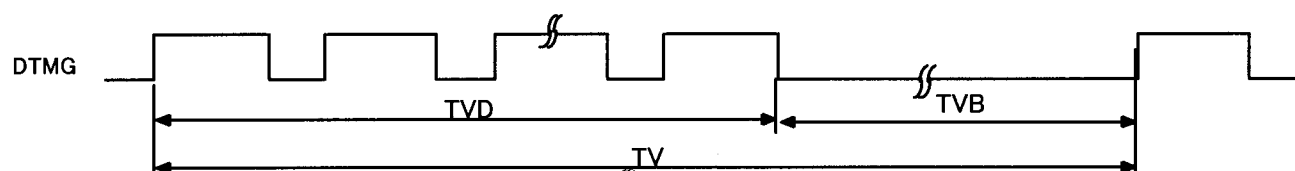
(Data : Latched at Fall edge of DCLK)



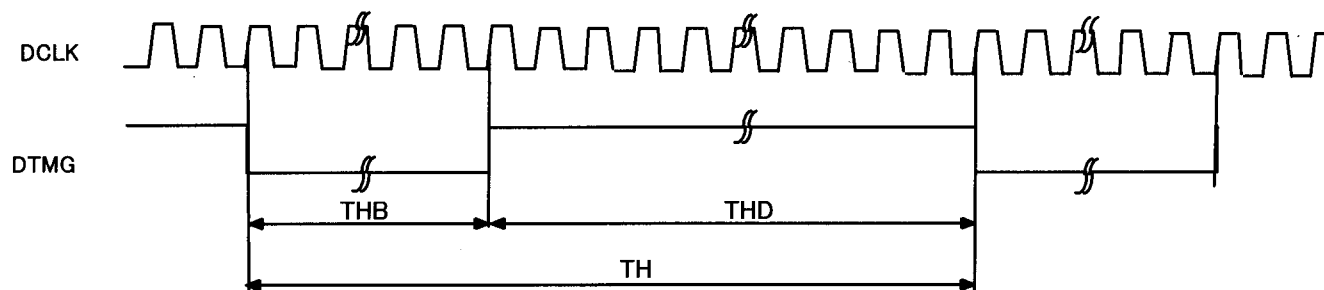
DCLK-DATA TIMING



VERTICAL TIMING



HORIZONTAL TIMING

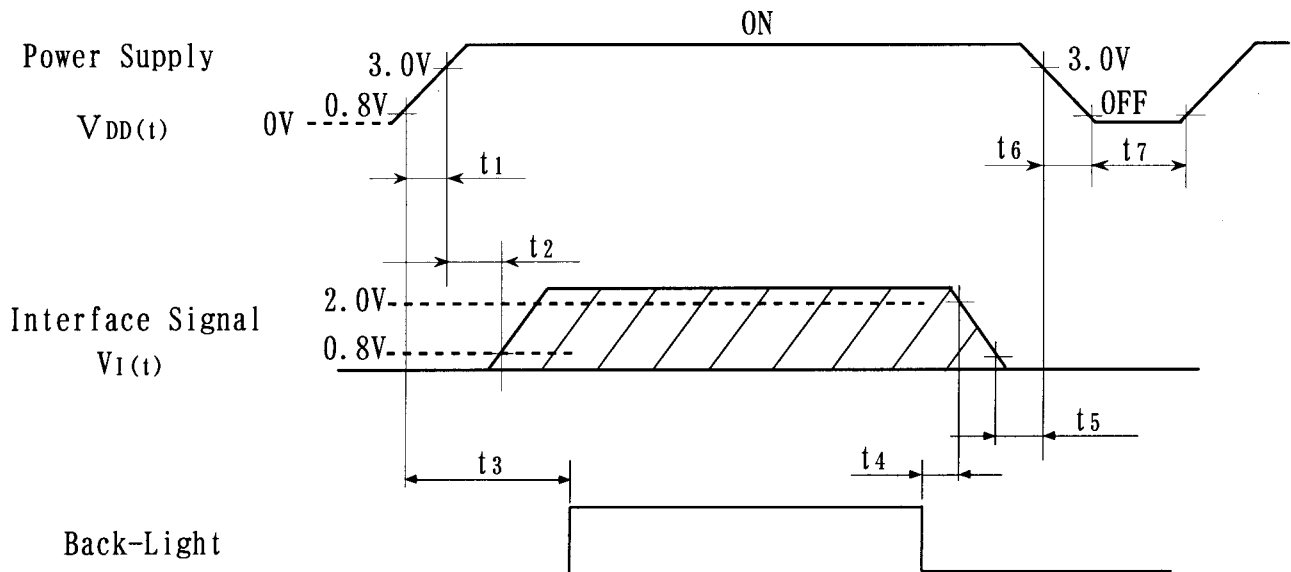


* This module is driven only by the DTMG signal and does not need to input Hsync and a Vsync signal.
As for the period (Blank period) when effective data is not inputted, a DTMG signal should surely serve as L level.

(2) INTERFACE TIMING SPECIFICATIONS

Item		Symbol	Min.	Typ.	Max.	Unit	Note
DCLK	Period	TCIP	34.5	40	43	ns	—
	Width-Low	TCL	12	—	—		
	Width-Hi	TCH	12	—	—		
	Duty	D	0.45	0.5	0.55	—	D=TCL/TCIP
	Rise Time	TRCLK	—	—	5	ns	—
	Fall Time	TFCLK	—	—	5		
DATA	Setup Time	TDSH/TDSL	5	—	—	ns	—
	Hold Time	TDHH/TDHL	10	—	—		
	Rise Time	TRDA	—	—	5	ns	—
	Fall Time	TFDA	—	—	5		
DTMG	Setup Time	TES	5	—	—	ns	—
	Hold Time	TEH	10	—	—		
	Period	TV	515	525	609	TH	—
	Vertical Front porch	TVD	—	480	—		
	Vertical Back porch	TVB	—	45	—		
	Period	TH	760	800	870	DCLK	—
	Horizontal Front porch	THD	—	640	—		
	Horizontal Back porch	THB	—	160	—		
	Rise Time	TRDT	—	—	5	ns	—
	Fall Time	TFDT	—	—	5		

(3) TIMING BETWEEN INTERFACE SIGNAL AND POWER SUPPLY

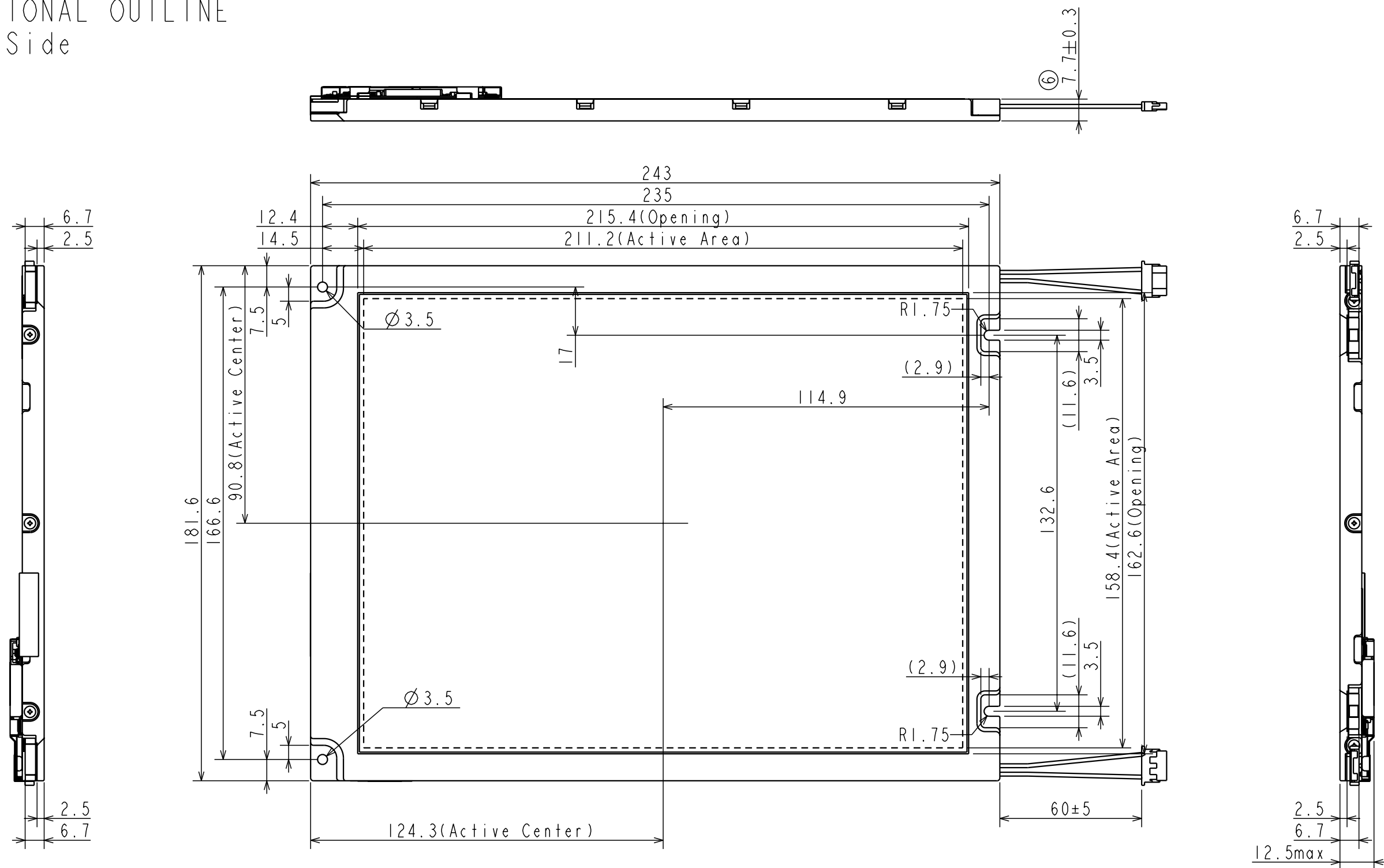


POWER ON			POWER OFF		
	t_1	$\leq 15\text{ms}$	5ms	$\leq t_4$	
0ms	$< t_2$	$\leq 45\text{ms}$	0ms	$\leq t_5$	$\leq 45\text{ms}$
0.1s	$\leq t_3$		0ms	$\leq t_6$	$\leq 20\text{ms}$
			0.4s	$\leq t_7$	

Note 1) Set $0\text{V} \leq V_I(t) \leq V_{DD}(t)$.
 Here, $V_I(t)$, $V_{DD}(t)$ indicate the transitive state of V_I , V_{DD} when power supply is turned ON or OFF.

Note 2) Do not keep interface signal high-impedance when power on.

7. DIMENSIONAL OUTLINE Front-Side



NOTE

- ① Interface connector
HRS:FH12-32S-0.5SH(55)「Gilding」
- ② CFL cable connector
JST:BHR-02(8.0)VS-1N
- ③ The unspecified tolerance:±0.5mm
- ④ Holes for mounting LCD MODULE
top mounting:4holes
- ⑤ The screws mounted in the side of LCD MODULE:6points
- ⑥ Dimension measurement should be done with adding pressure of 9.8×10^4 Pa

UNIT:mm

Hitachi Displays, Ltd.

Date

Jul.10,2006

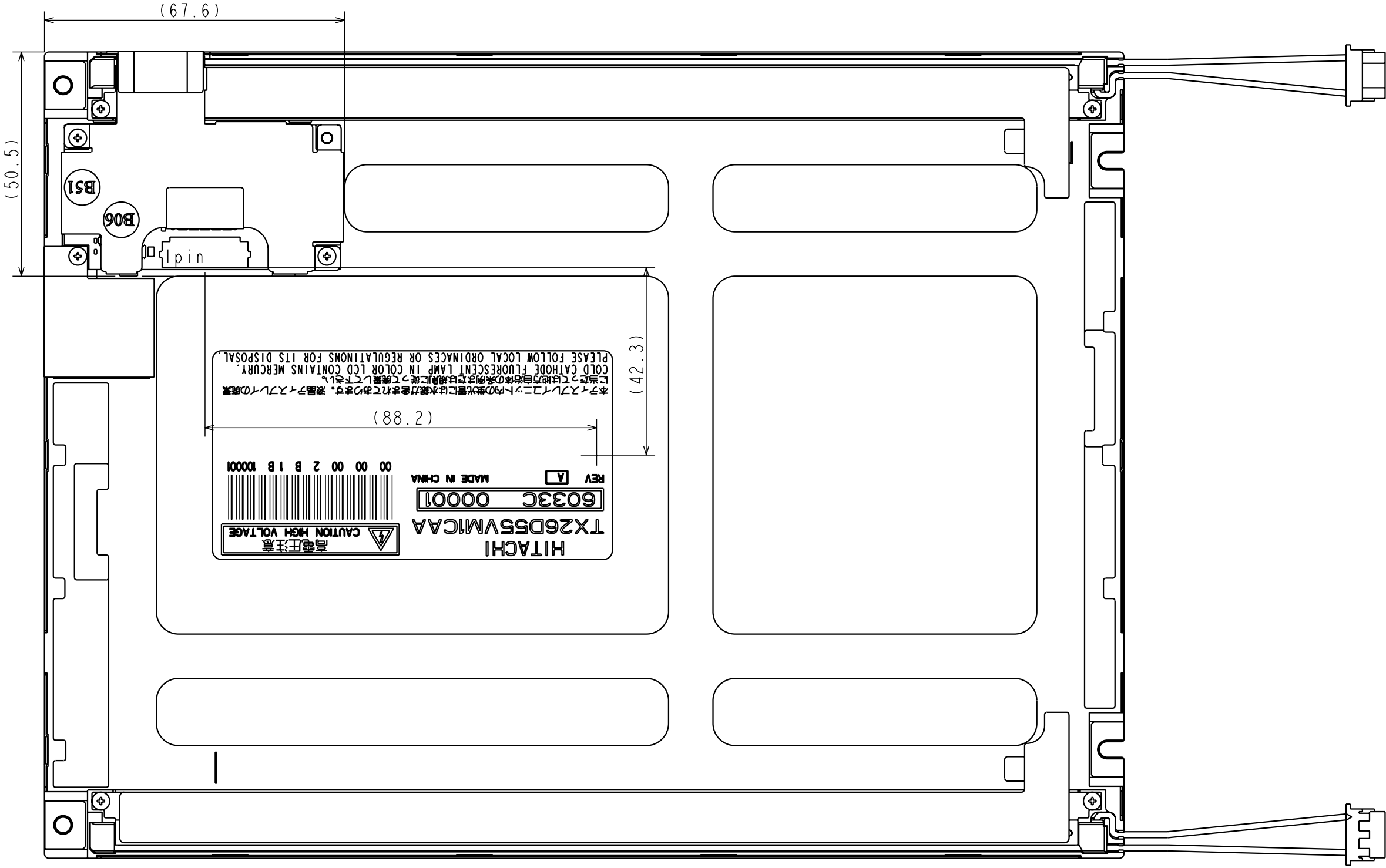
Sh.
No.

3284PS26 10-TX26D55VMICAA-1

Page

10-1/2

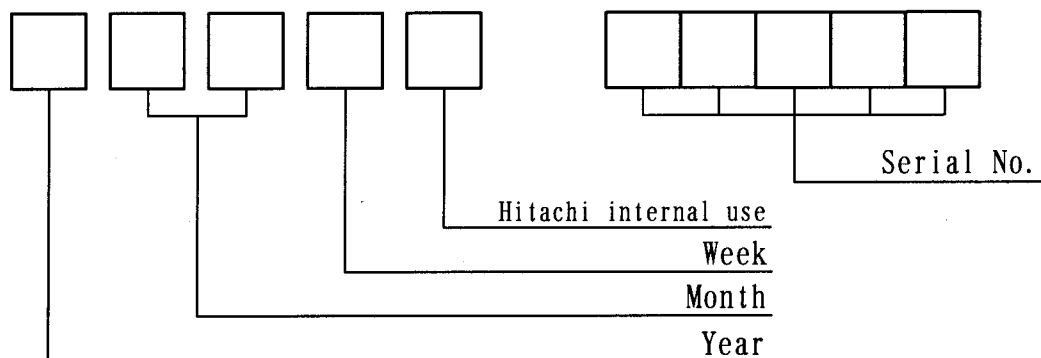
Back-Side



8. DESIGNATION OF LOT MARK

8.1 LOT MARK

Lot Mark is consisted of 4 digits for production lot and 5 digits for production control.



Year	Figure in Lot Mark
2006	6
2007	7
2008	8
2009	9
2010	0

Week(day in calender)	Figure in Lot Mark
1~7	1
8~14	2
15~21	3
22~28	4
29~31	5

Month	Figure in Lot Mark	Month	Figure in Lot Mark
1	01	7	07
2	02	8	08
3	03	9	09
4	04	10	10
5	05	11	11
6	06	12	12

Hitachi internal use	
H	Made in Japan
C	Made in China
T	Made in Taiwan

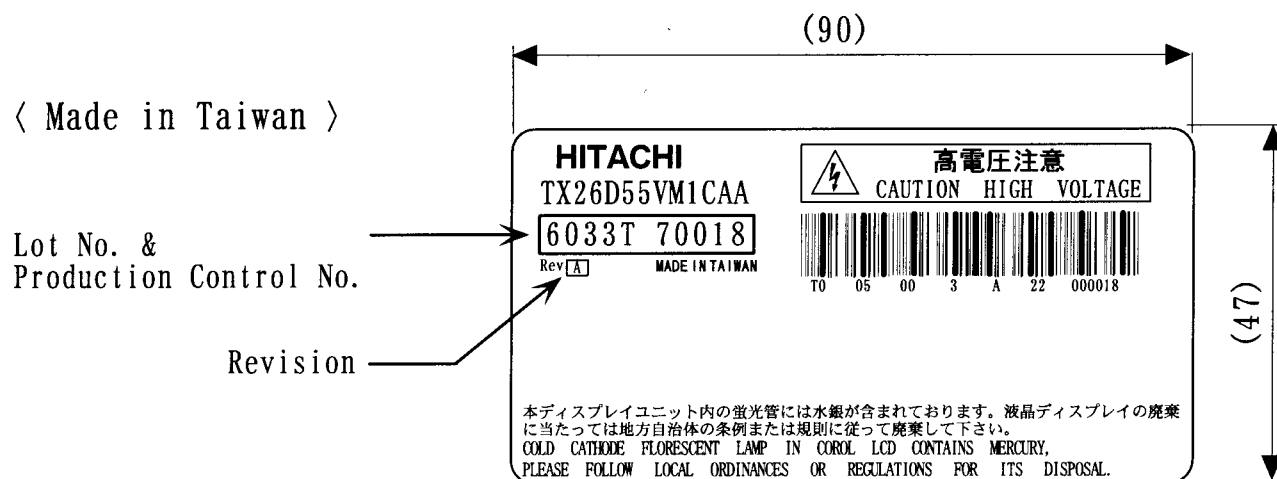
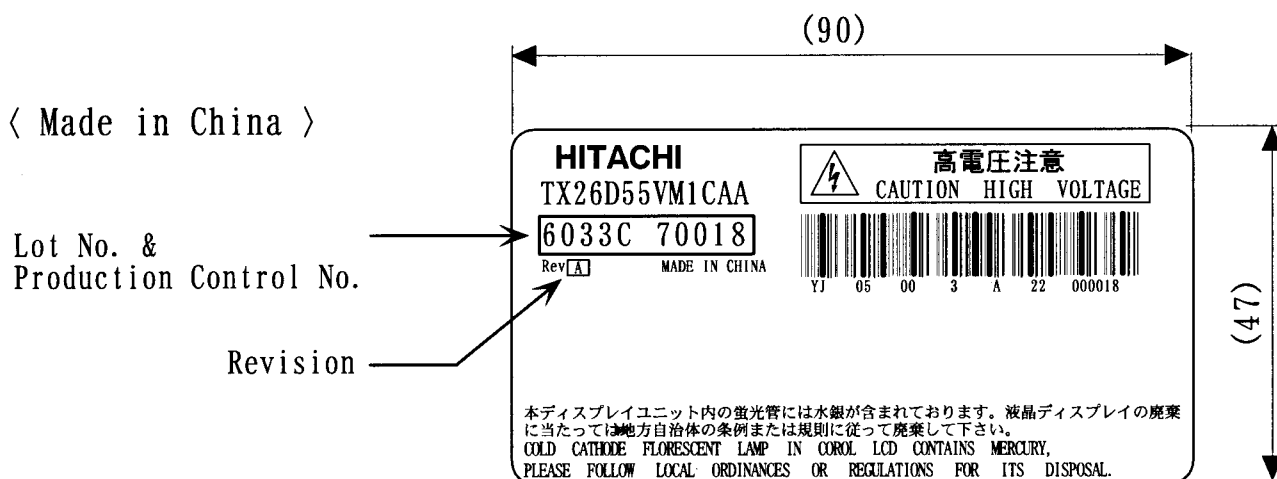
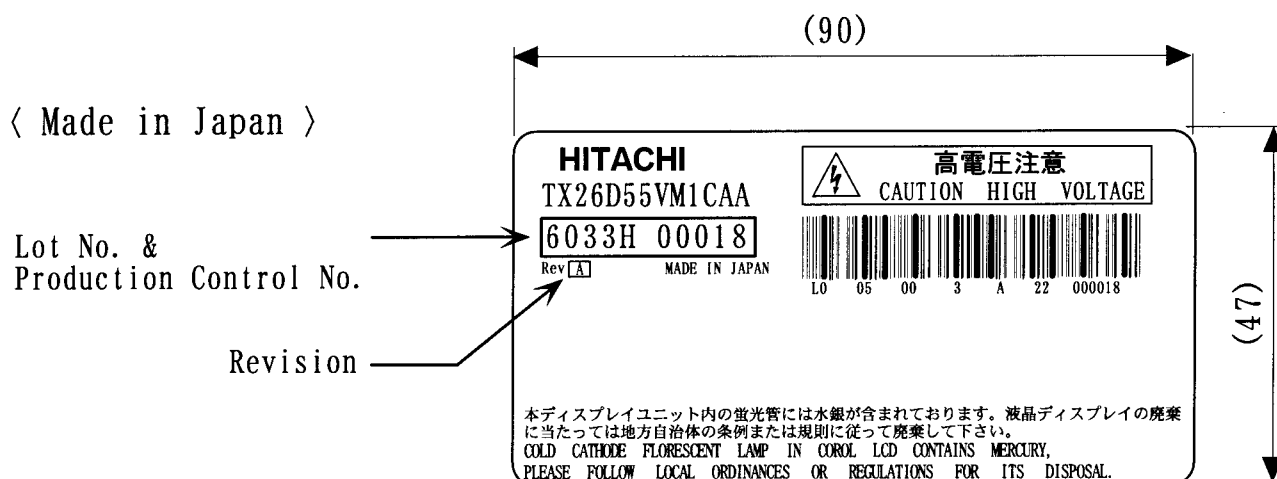
8.2 Serial No.

Serial No. is consisted of 5 digits number (00001~99999).

8.3 LOCATION OF LOT MARK

Label is attached on the back side of module.

The items are subject to change without notice.

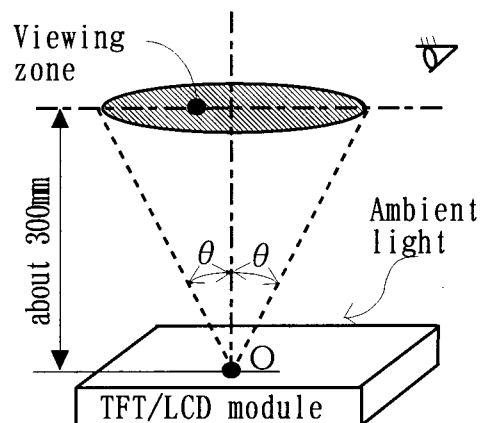


9. COSMETIC SPECIFICATIONS

9.1 CONDITIONS FOR COSMETIC INSPECTION

(1) Viewing zone

- i) The figure shows the correspondence between eyes (of inspector) and TFT/LCD module.
 - $\theta \leq 15^\circ$ when non-operating inspection
 - $\theta \leq 5^\circ$ when operating inspection
- ii) Inspection should be executed only from front side, and only A-zone. Cosmetic of B-zone and C-zone are ignored.
(refer to 9.2 DEFINITION OF ZONE)



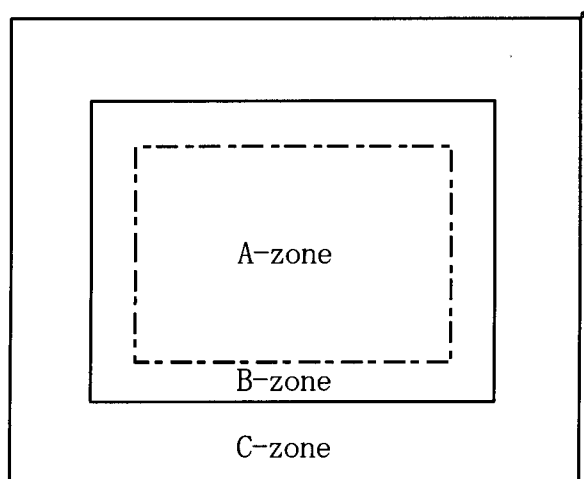
(2) Environmental

- i) Temperature : 25°C
When operating inspection, surface temperature of LCD panel is 25°C.
- ii) Ambient light : More than 2000 [lx] and non-directive.
- iii) Back-light : When non-operating inspection, Back-light should be off.

(3) Operating inspection

Operating inspection should be done with 8 color mode (without gray scale).

9.2 DEFINITION OF ZONE



- A-zone : Display area (pixel area).
- B-zone : Area between A-zone and C-zone.
- C-zone : Metal bezel area.
(Include I/F connector)

9.3 COSMETIC SPECIFICATIONS

When displaying condition is not stable (ex. at turn on or off), the following specifications are not applied.

No.	ITEM			MAXMUM ACCEPTABLE NUMBER	UNIT	NOTE
				A-zone		
1	Dot Defect	Sparkle mode	1dot	5	pcs	1), 2), 4)
			2dots	2	units	1), 2), 5)
			3dots	0		
			4dots	0		
			Density	2	pcs/φ15	1), 2), 6)
			Total	5	pcs	1), 2)
		Black mode	1dot	10	pcs	1), 3), 4)
			2dots	5	units	1), 3), 5)
			3dots	0		
			4dots	0		
			Density	3	ヶ/φ5	1), 3), 7)
			Total	10	pcs	1), 3)
		Total			15	pcs
2 Line Defect			Serious one is no good.	—	—	
3 Uneven Brightness						
4	Stain Inclusion Line shape W:width[mm] L:length[mm]	W≤0.06	L : Ignore	Ignore	pcs	8)
		W>0.06	L>0.1	By Dot shape		
			L≤0.1	Ignore		
5	Stain Inclusion Dot shape D:average dia. [mm]	D≤0.45		Ignore	pcs	8)
		D≤0.7		5		
		D>0.7		0		
6	Scratch on Polarizer Line shape W:width[mm] L:length[mm]	W≤0.01	L : Ignore	Ignore	pcs	9)
		W≤0.02	L≤40	10		
			L>40	0		
		W≤0.04	L≤20	10		
			L>20	0		
7	Scratch on Polarizer Dot shape D:average dia. [mm]	D≤0.45		Ignore	pcs	9)
		D≤0.7		10		
		D>0.7		0		

No.	ITEM		MAXMUM ACCEPTABLE NUMBER	UNIT	NOTE
			A-zone		
8	Bubble of Polarizer D:average dia. [mm]	$D \leq 0.3$	Ignore	pcs	9)
		$D \leq 0.5$	10		
		$D \leq 1.0$	5		
		$D > 1.0$	0		
9	Wrinkles of Polarizer		Serious one is no good.	—	
10	Burr of Polarizer edge	$L \leq 1.0$	Ignore	pcs	
		$L > 1.0$	0		

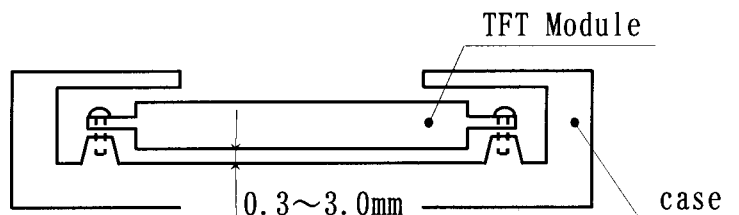
- Note
- 1) Dot Defect : Defect area $> 1/2$ dot
 - 2) Sparkle mode : Brightness of dot is more than 30% at Black raster.
(Visible to eye)
 - 3) Black mode : Brightness of dot is less than 70%
at white raster. (Visible to eye)
 - 4) 1 dot : defect dot is isolated, not attached to other defect dot.
 - 5) N dots : N defect dots are consecutive.
(N means the number of defect dots. ($N \geq 2$))
 - 6) Sparkle mode density : the number of defects in the area
of $\phi 15\text{mm}$.
 - 7) Black mode density : the number of defects in the area
of $\phi 5\text{mm}$.
 - 8) Those stains which can be wiped out easily are acceptable.
 - 9) Polaraizer area inside of A-zone is applied,
and B/C-zone is not applied.

10. PRECAUTIONS

Please pay attention to the followings when you use this TFT/LCD module with Back-light unit.

10.1 MOUNTING PRECAUTION

- (1) You must mount Module using mounting holes arranged in 8 corners tightly.
- (2) You should consider the mounting structure so that uneven force (ex. twisted stress) is not applied to Module.
And the case which Module is mounted should have sufficient strength so that external force is not transmitted directly to Module.
- (3) To improve the strength of module against the mechanical shock the space between module and the case should be 0.3~3.0mm.



- (4) You should adopt radiation structure to satisfy the temperature specification.
- (5) Acetic acid type and chloline type materials for the cover case are not desiable because the former generate corrosive gas of attacking the polarizer at high temperature and the latter causes circuit break by electro-chemical reaction.
- (6) Do not touch, push or rub the exposed polarizers with glass, tweezers or anything harder than HB pencil lead. And please do not rub by dustclothes with chemical treatment.
Do not touch the surface of polarizer with bare hand or greasy close.
(Some cosmetics are detrimental to the polarizer.)
- (7) When the surface becomes dusty, please wipe gently with absorbent cotton or other soft materials chamois soaked petrolum benzin.
IPA(Iso-Propyl Alcohol) is recommended for cleaning the adhesives used to attach front /rear polarizers. Do not use acetone, toluen and alcohol because they cause chemical damage to the polarizer.
- (8) Wipe off saliva or water drops as soon as possible. Their long time contact with polarizer causes deformations and color fading.
- (9) Do not open the case because inside circuits have not sufficient strength.
- (10) Use fingerstalls of soft gloves in order to keep clean display quality, when you handle the device for incoming inspection and assembly.
- (11) Do not pull or do not fold the CFL cable.

10.2 OPERATING PRECAUTION

- (1) Response time depends on the temperature. (In lower temperature, it becomes longer).
And also Transmittance and Color depend on the temperature.
- (2) Brightness depends on the temperature. (In lower temperature, it becomes lower).
And in lower temperature, response time (required time that brightness is stable after turn on) becomes longer.
- (3) Optical characteristics (eg. luminance, uniformity, color coordinate etc.) gradually change by operating condition, especially low temperature change faster, because LCD module has Cold Cathode Fluorescent Lamp.
- (4) Be careful for condensation at sudden temperature change.
Condensation make damage to polarizer or electrical contact part.
And after fading condensation, smear or spot will occur.
- (5) When fixed patterns are displayed at long times, afterimage is likely to occur.
- (6) The Module have high frequency circuit. If you need to shield the electromagnetic noise, please do in yours.
- (7) When Back-light unit is operating, it sounds.
If you need to shield the noise, please do in yours.
- (8) Please connect the Back-light connector to the inverter circuit directly.
The long cable between CFL and the inverter may cause the brightness drop of CFL and may cause the rise of starting lamp Voltage(Vs).
In addition, it causes CFL life to shorten.
- (9) Do not connect or remove the module from main system with power applied.

10.3 ELECTROSTATIC DISCHARGE CONTROL

- (1) Since Module is composed with electronic circuit, it is not strong to electrostatic discharge. Make certain that treatment persons are connected to ground through list band etc.. And don't touch I/F pin directly.
- (2) When the polaraizer protection film is peeled off,
electrostatic discharge occurs. Please peel it off slowly.

10.4 PRECAUTION FOR STRONG LIGHT EXPOSURE

Strong light exposure causes degradation of polarizer and color filter.

Hitachi Displays, Ltd.	Date	Jul. 10, 2006	Sh. No.	3284PS 2613-TX26D55VM1CAA-1	Page	13-2/4
------------------------	------	---------------	------------	-----------------------------	------	--------

10.5 Precaution to strage

When modules for replacement are stored for a long time, following precautions should be taken care of :

- (1) For preventing the liquid crystal deterioration with the ultraviolet ray, please retain when by all means it is inserted in the Hitachi shipping box.
- (2) When it cannot retain in the Hitachi shipping box, Modules should be stored in a dark place.
It is prohibited to apply sunlight or fluorescent light during storage.
- (3) The surface of polarizers should not come in contact with any other object. It is recommended that modules should be stored in the Hitachi shipping box.
- (4) Modules should be at 5 to 35 at normal humidity (60%RH or less).
- (5) Please follow to the environmental condition of statement in the page 4-1/2 of CAS excluding the long term strage.

10.6 HANDLING PRECAUTIONS FOR PROTECTIVE FILM

- (1) When the protective film is peeled off, static electricity is generated between the film and the polarizer.
This film should be peeled off slowly and carefully by people who are electrically grounded and with well ion-blown equipment or in such a condition, etc.
- (2) The protective film is attached to the polarizer with a small amount of glue. If some stress is applied to rub the protective film against the polarizer during the time you peel off the film, the glue is apt to remain more on the polarizer. So please carefully peel off the protective film without rubbing it against the polarizer.
- (3) When the Module with protective film attached is stored for long time, sometimes there remains a very small amount of glue, still on the polarizer after the protective film is peeled off.
Please refrain from storing the Module at the high temperature and high humidity for glue is apt to remain in these condition.
- (4) The Glue may be taken for the Modules failure, but you can remove the Glue easily.
When the glue remains on the polarizer surface or its vestige is recognized, please wipe them off with absorbent cotton waste or other soft material like chamois soaked with IPA(Iso-Propyl Alcohol).

Hitachi Displays, Ltd.	Date	Jul. 10, 2006	Sh. No.	3284PS 2613-TX26D55VM1CAA-1	Page	13-3/4
------------------------	------	---------------	------------	-----------------------------	------	--------

10.7 SAFETY

- (1) If Module is broken, be careful to handle not to injure. (TFT/LCD and Lamp are made of glass.)
Please wash hands sufficiently when you touch the liquid crystal coming out from broken LCDs.
- (2) As Back-light unit has high voltage circuit internal, do not open the case and do not insert foreign materials in the case.

10.8 Environmental protection

- (1) The LCD Modules include Cold Cathode Fluorescent Lamp(CFL).
CFL contains a small amount of mercury. Please follow local ordinances or regulations for disposal.
- (2) Printed circuits board used in a module contain small amount of lead below RoHS regulation value.
Please follow local ordinance or regulations for its disposal.