

CMOS 8-Bit Microcontroller

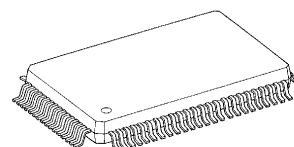
TMP86PS43F

The TMP86PS43F is a OTP type MCU which includes 60 Kbytes One-time PROM. It is a pin compatible with a mask ROM product of the TMP86PS43F. Writing the program to built-in PROM, the TMP86PS43F operates as the same way as the TMP86PS43F. Using the Adapter socket, you can write and verify the data for the TMP86PS43F with a general-purpose PROM programmer same as TC571000D/AD.

Product No.	ROM	RAM	Package	Adapter Socket
TMP86PS43F	60 K × 8 bits	2 K × 8 bits	P-QFP80-1420-0.80B	BM11182

www.DataSheet4U.com

P-QFP80-1420-0.80B

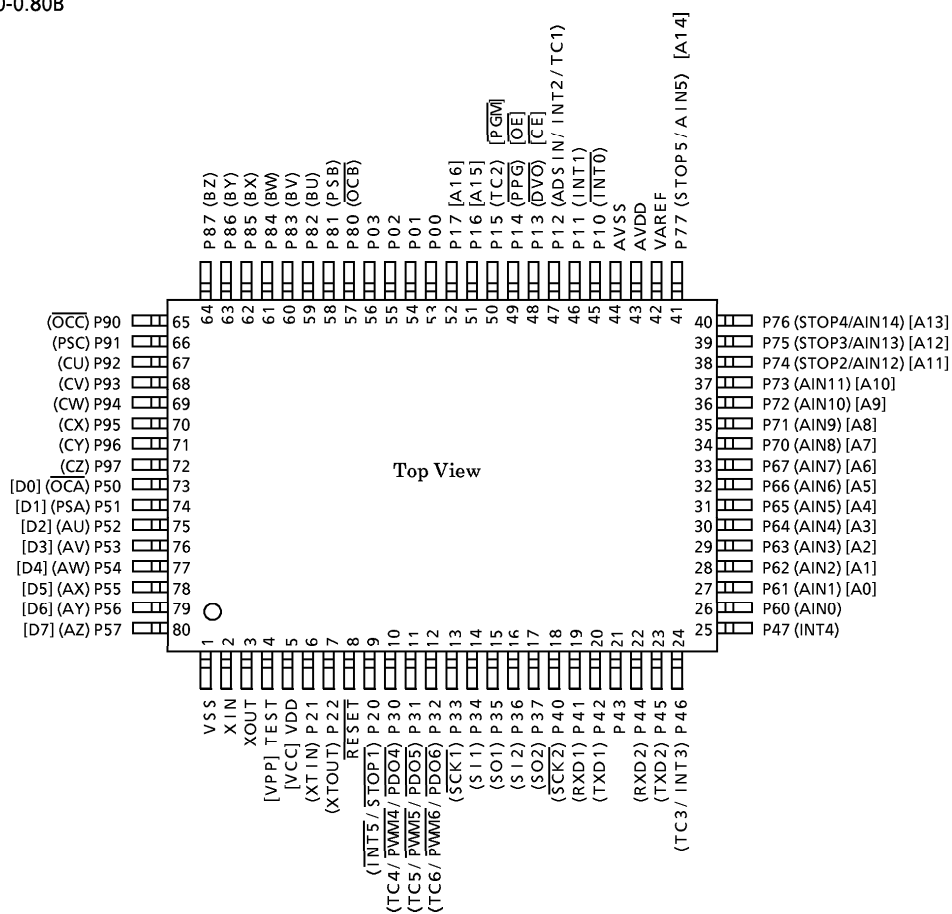


TMP86PS43F

000707EBP1

- For a discussion of how the reliability of microcontrollers can be predicted, please refer to Section 1.3 of the chapter entitled Quality and Reliability Assurance / Handling Precautions.
- TOSHIBA is continually working to improve the quality and reliability of its products. Nevertheless, semiconductor devices in general can malfunction or fail due to their inherent electrical sensitivity and vulnerability to physical stress. It is the responsibility of the buyer, when utilizing TOSHIBA products, to comply with the standards of safety in making a safe design for the entire system, and to avoid situations in which a malfunction or failure of such TOSHIBA products could cause loss of human life, bodily injury or damage to property. In developing your designs, please ensure that TOSHIBA products are used within specified operating ranges as set forth in the most recent TOSHIBA products specifications. Also, please keep in mind the precautions and conditions set forth in the "Handling Guide for Semiconductor Devices," or "TOSHIBA Semiconductor Reliability Handbook" etc..
- The TOSHIBA products listed in this document are intended for usage in general electronics applications (computer, personal equipment, office equipment, measuring equipment, industrial robotics, domestic appliances, etc.). These TOSHIBA products are neither intended nor warranted for usage in equipment that requires extraordinarily high quality and/or reliability or a malfunction or failure of which may cause loss of human life or bodily injury ("Unintended Usage"). Unintended Usage include atomic energy control instruments, airplane or spaceship instruments, transportation instruments, traffic signal instruments, combustion control instruments, medical instruments, all types of safety devices, etc.. Unintended Usage of TOSHIBA products listed in this document shall be made at the customer's own risk.
- The products described in this document are subject to the foreign exchange and foreign trade laws.
- The information contained herein is presented only as a guide for the applications of our products. No responsibility is assumed by TOSHIBA CORPORATION for any infringements of intellectual property or other rights of the third parties which may result from its use. No license is granted by implication or otherwise under any intellectual property or other rights of TOSHIBA CORPORATION or others.
- The information contained herein is subject to change without notice.

P-QFP80-1420-0.80B



Pin Function

The TMP86PS43 has MCU mode and PROM mode.

(1) MCU mode

In the MCU mode, the TMP86PS43F is a pin compatible with the TMP86PS43F (Mask sure to fix the TEST pin to "L" level).

(2) PROM mode

Pin Name	Input/Output	Functions	Pin Name (MCU mode)
A16 to A15	Input	Input of Memory address for program	P17 to P16
A14 to A7			P77 to P70
A6 to A0			P67 to P61
D7 to D0	I/O	Input/Output of Memory data for program	P57 to P50
$\overline{\text{CE}}$	Input	Chip enable	P13
$\overline{\text{OE}}$		Output enable	P14
$\overline{\text{PGM}}$		Program control	P15
VPP	Power supply	+ 12.75 V/5 V (Power supply of program)	TEST
VCC		+ 6.25 V/5 V	VDD
GND		0 V	VSS
P11, P21, AVDD	I/O	PROM mode setting pin. Fix to "H".	
P00, P10, P20, P22, AVSS, VAREF		PROM mode setting pin. Fix to "L".	
RESET			
P03 to P01	I/O	Open	
P12, P16, P17			
P37 to P30			
P47 to P40			
P87 to P80			
P97 to P90			
AVDD	Power supply	5 V	
AVSS		0 V (GND)	
VAREF		0 V (GND)	
XIN	Input	Self oscillation with resonator (16 MHz).	
XOUT	Output		

Operation

This section describes the functions and basic operational blocks of TMP86PS43F.

The TMP86PS43F has PROM in place of the mask ROM which is included in the TMP86CS43F. The configuration and function are same as the TMP86CS43F. For TMP86CS43F, however, some functions have been partially changed or deleted. For the function of TMP86PS43F in details, see the section of TMP86CS43F

In addition, TMP86PS43F operates as the single clock mode when releasing reset.

When using the dual clock mode, oscillate a low-frequency clock by SET. XTEN command at the beginning of program.

1. Operating Mode

The TMP86PS43F has MCU mode and PROM mode.

1.1 MCU Mode

The MCU mode is set by fixing the TEST/VPP pin to the “L” level (TEST/VPP pin cannot be used open because it has no built-in pull-down resistor).

1.1.1 Program memory

The TMP86PS43F has a 60 Kbyte built-in one time PROM (addresses 1000 to FFFF_H in the MCU mode, addresses 0000 to EFFF_H in the PROM mode).

When using TMP86PS43F for evaluation of TMP86CS43F, the program is written in the program storing area shown in Figure 1-1.

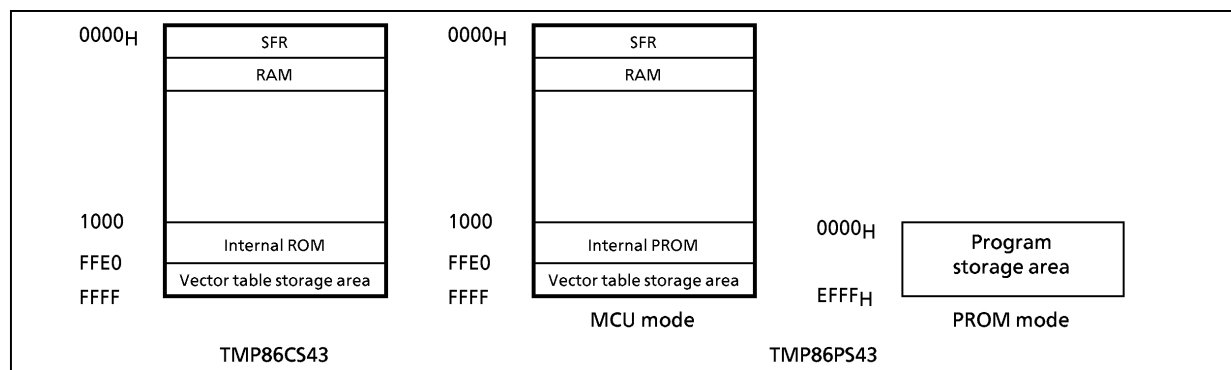


Figure 1-1. Program Memory Area

Note: The area that is not in use should be set data to FF_H, or a general-purpose PROM programmer should be set only in the program memory area to access.

1.1.2 Data Memory

TMP86PS43 has a built-in 2-Kbyte data memory (static RAM).

1.1.3 Input/Output Circuitry

(1) Control pins

The control pins of the TMP86PS43 are the same as those the TMP86CS43 except that the TEST pin does not have a built-in pull-down resistor.

(2) I/O ports

The I/O circuitries of TMP86PS43 I/O ports are the same as those of TMP86CS43.

Electrical Characteristics

Absolute Maximum Ratings (V_{SS} = 0 V)

Parameter	Symbol	Pins	Ratings	Unit
Supply Voltage	V _{DD}		– 0.3 to 6.5	V
Program Voltage	V _{PP}		– 0.3 to 13.0	
Input Voltage	V _{IN}		– 0.3 to V _{DD} + 0.3	
Output Voltage	V _{OUT}		– 0.3 to V _{DD} + 0.3	
Output Current (Per 1 pin)	I _{OUTH}	Except Open-drain	– 3.2	mA
	I _{OUT1}	Except Port P5, P9	3.2	
	I _{OUT2}	Port P5	30	
	I _{OUT3}	Port P9		
Output Current (Total)	ΣI _{OUT1}	Except Port P5, P9	60	
	ΣI _{OUT2}	Port P5		
	ΣI _{OUT3}	Port P9		
Power Dissipation [T _{opr} = 85°C]	PD		250	mW
Soldering Temperature (time)	Tsld		260 (10 s)	°C
Storage Temperature	Tstg		– 55 to 125	
Operating Temperature	Topr		– 40 to 85	

Note: The absolute maximum ratings are rated values which must not be exceeded during operation, even for an instant. Any one of the ratings must not be exceeded. If any absolute maximum rating is exceeded, a device may break down or its performance may be degraded, causing it to catch fire or explode resulting in injury to the user. Thus, when designing products which include this device, ensure that no absolute maximum rating value will ever be exceeded.

Recommended Operating Condition (V_{SS} = 0 V, T_{opr} = – 40 to 85°C)

Parameter	Symbol	Pins	Condition	Min	Max	Unit
Supply Voltage	V _{DD}		f _c = 1 to 16 MHz Each operation modes	4.5	5.5	V
			f _c = 1 to 8 MHz Each operation modes	2.7	5.5	
			f _s = 32.768 kHz Each operation modes	2.7	5.5	
			STOP mode	2.0	5.5	
Input high Level	V _{IH1}	Except hysteresis input	V _{DD} ≥ 4.5 V	V _{DD} × 0.70	V _{DD}	V
	V _{IH2}	Hysteresis input		V _{DD} × 0.75		
	V _{IH3}		V _{DD} < 4.5 V	V _{DD} × 0.90		
Input low Level	V _{IL1}	Except hysteresis input	V _{DD} ≥ 4.5 V	0	V _{DD} × 0.30	
	V _{IL2}	Hysteresis input			V _{DD} × 0.25	
	V _{IL3}		V _{DD} < 4.5 V		V _{DD} × 0.10	
Clock Frequency	f _c	XIN, XOUT	V _{DD} = 4.5 to 5.5 V	1.0	16.0	MHz
			V _{DD} = 2.7 to 5.5 V		8.0	
	f _s	XTIN, XTOUT		30.0	34.0	kHz

Note: The recommended operating conditions for a device are operating conditions under which it can be guaranteed that the device will operate as specified. If the device is used under operating conditions other than the recommended operating conditions (supply voltage, operating temperature range, specified AC/DC values etc.), malfunction may occur. Thus, when designing products which include this device, ensure that the recommended operating conditions for the device are always adhered to.

DC Characteristics	(V _{SS} = 0 V, T _{opr} = – 40 to 85°C)
--------------------	--

Parameter	Symbol	Pins	Condition	Min	Typ.	Max	Unit
Hysteresis Voltage	V _{HS}	Hysteresis input		–	0.9	–	V
Input Current	I _{IN1}	TEST	V _{DD} = 5.5 V, V _{IN} = 5.5 V/0 V	–	–	± 2	μA
	I _{IN2}	Sink Open Drain, Tri-state port					
	I _{IN3}	STOP, RESET					
Input Resistance	R _{IN1}	RESET		100	220	450	kΩ
	R _{IN2}	Programmable pull up (P6, P7, PA, PB)		40	80	200	
OSC. Feedback resistance	R _{fx}	XIN-XOUT		–	1.2	–	MΩ
	R _{fxT}	XTIN-XTOUT		–	6	–	
Output Leakage Current	I _{LO1}	Sink Open Drain port	V _{DD} = 5.5 V, V _{OUT} = 5.5 V	–	–	2	μA
	I _{LO2}	Tri-state port	V _{DD} = 5.5 V, V _{OUT} = 5.5 V/0 V	–	–	± 2	
"H" output Voltage	V _{OH}	Tri-state port	V _{DD} = 4.5 V, I _{OH} = – 0.7 mA	4.1	–	–	V
"L" output Voltage	V _{OL3}	Except XOUT, P5, P9	V _{DD} = 4.5 V, I _{OL} = 1.6 mA	–	–	0.4	
"L" output Current	I _{OL1}	Except XOUT, P5, P9	V _{DD} = 4.5 V, V _{OL} = 0.4 V	–	1.6	–	mA
	I _{OL3}	High current port (P5, P9)	V _{DD} = 4.5 V, V _{OL} = 1.0 V	–	20	–	
Supply Current in Normal 1, 2 mode	I _{DD}		V _{DD} = 5.5 V V _{IN} = 5.3 V/0.2 V f _c = 16 MHz f _s = 32.768 kHz	–	15	20	
Supply Current in IDLE 1, 2 mode				–	9	13	
Supply Current in SLOW 1 mode			V _{DD} = 3.0 V V _{IN} = 2.8 V/0.2 V f _s = 32.768 kHz	–	30	60	μA
Supply Current in SLEEP 0, 1 mode				–	15	30	
Supply Current in STOP mode			V _{DD} = 5.5 V V _{IN} = 5.3 V/0.2 V	–	0.5	10	

Note 1: Typical values show those at T_{opr} = 25°C, V_{DD} = 5 V

Note 2: Input current (I_{IN1}, I_{IN3}); The current through resistor is not included, when the input resistor (pull-up or pull-down) is contained.

Note 3: I_{DD}; Except for I_{REF}.

AD Conversion Characteristics

(V_{SS} = 0 V, 4.5 V ≤ V_{DD} ≤ 5.5 V, Topr = –40 to 85°C)

Parameter	Symbol	Condition	Min	Typ.	Max	Unit
Analog Reference Voltage	V _{AREF}		A _{VDD} – 1.0	–	A _{VDD}	V
Power Supply Voltage of Analog Control Circuit	A _{VDD}		V _{DD}			
	A _{VSS}		V _{SS}			
Analog Reference of Voltage Range (Note 4)	△V _{AREF}		3.5	–	V _{DD}	
Analog Input Voltage	V _{AIN}		V _{SS}	–	V _{AREF}	
Power Supply Current of Analog Reference Voltage	I _{REF}	V _{DD} = A _{VDD} = V _{AREF} = 5.5 V V _{SS} = A _{VSS} = 0.0 V	–	0.6	1.0	mA
Non linearity Error		V _{DD} = A _{VDD} = 5.0 V V _{SS} = A _{VSS} = 0.0 V V _{AREF} = 5.0 V	–	–	± 2	LSB
Zero Point Error			–	–	± 2	
Full Scale Error			–	–	± 2	
Total Error			–	–	± 4	

Note 1: The total error includes all errors except a quantization error, and is defined as a maximum deviation from the ideal conversion line.

Note 2: Conversion time is different in recommended value by power supply voltage.

About conversion time, please refer to "2.14.2 Register Configuration".

Note 3: Please use input voltage to AIN input Pin in limit of V_{AREF} – V_{SS}.

When voltage of range outside is input, conversion value becomes unsettled and gives affect to other channel conversion value.

Note 4: Analog Reference Voltage Range: ΔV_{AREF} = V_{AREF} – V_{SS}

AC Characteristics

(V_{SS} = 0 V, V_{DD} = 4.5 to 5.5 V, Topr = –40 to 85°C)

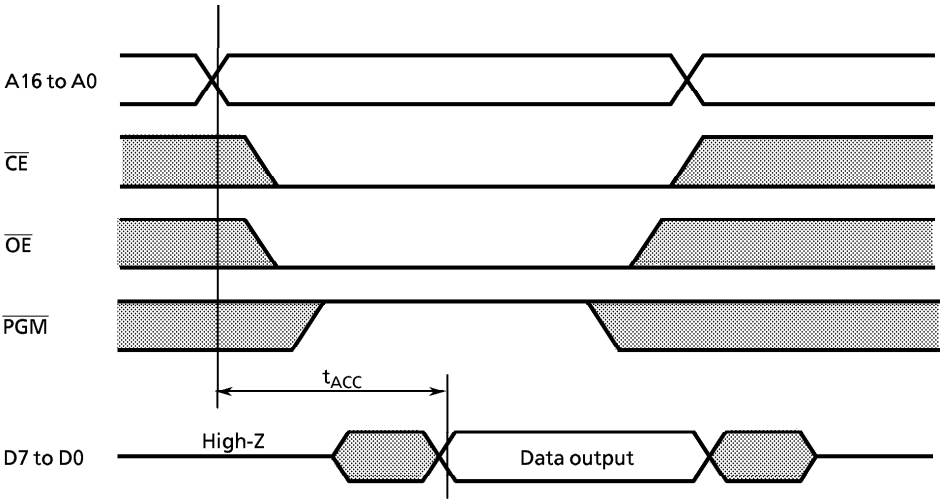
Parameter	Symbol	Condition	Min	Typ.	Max	Unit
Machine Cycle Time	t _{cy}	NORMAL 1, 2 mode	0.25	–	4	μs
		IDLE 0, 1, 2 mode				
		SLOW 1, 2 mode	117.6	–	133.3	
		SLEEP 0, 1, 2 mode				
High Level Clock Pulse Width	t _{WCH}	For external clock operation (XIN input) fc = 16 MHz	–	31.25	–	ns
Low Level Clock Pulse Width	t _{WCL}					
High Level Clock Pulse Width	t _{WSH}	For external clock operation (XTIN input) fs = 32.768 kHz	–	15.26	–	μs
Low Level Clock Pulse Width	t _{WSL}					

DC Characteristics, AC Characteristics (PROM Mode) (V_{SS} = 0 V, Topr = 25 ± 5°C)

(1) Read operation in PROM mode

Parameter	Symbol	Conditions	Min	Typ.	Max	Unit
High level input voltage (TTL)	V _{IH4}		2.2	–	V _{CC}	V
Low level input voltage (TTL)	V _{IL4}		0	–	0.8	
Power supply	V _{CC}		4.75	5.0	5.25	
Power supply of program	V _{PP}					
Address access time	t _{ACC}	V _{CC} = 5.0 ± 0.25 V	–	1.5tcyc + 300	–	ns

Note: tcyc = 250 ns at 16 MHz

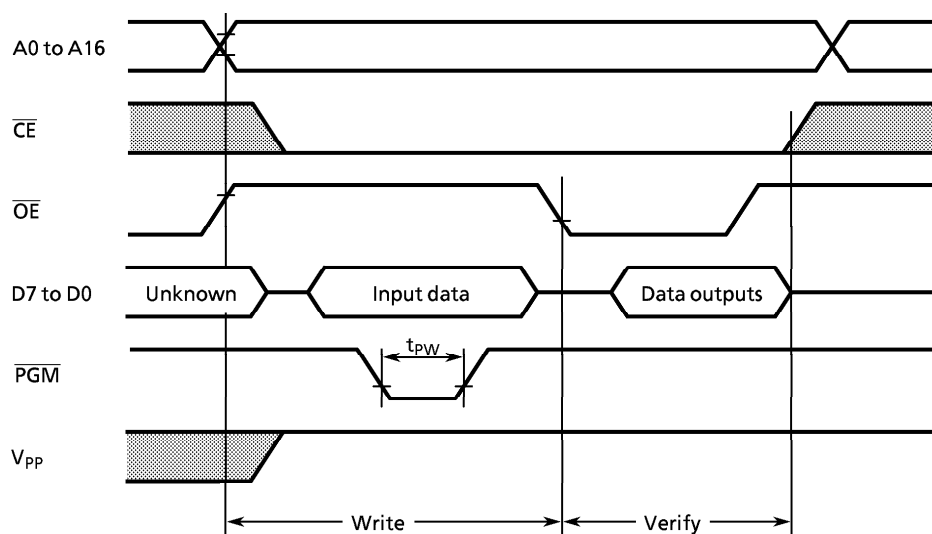


(2) Program operation (High-speed) ($T_{opr} = 25 \pm 5^{\circ}\text{C}$)

Parameter	Symbol	Conditions	Min	Typ.	Max	Unit
High level input voltage (TTL)	V_{IH4}		2.2	–	V_{CC}	V
Low level input voltage (TTL)	V_{IL4}		0	–	0.8	
Power supply	V_{CC}		6.0	6.25	6.5	
Power supply of program	V_{PP}		12.5	12.75	13.0	
Pulse width of initializing program	t_{PW}	$V_{CC} = 6.0\text{ V}$	0.095	0.1	0.105	ms

www.DataSheet4U.com

High-speed program



Note 1: The power supply of V_{PP} (12.75 V) must be set power-on at the same time or the later time for a power supply of V_{CC} and must be clear power-on at the same time or early time for a power supply of V_{CC} .

Note 2: The pulling up/down device on the condition of $V_{PP} = 12.75\text{ V} \pm 0.25\text{ V}$ causes a damage for the device. Do not pull up/down at programming.

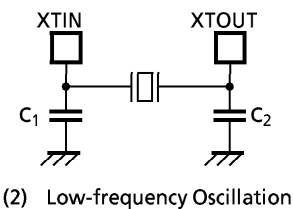
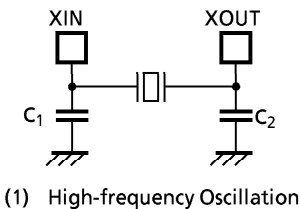
Note 3: Use the recommended adapter (see 1.2.2 (1)) and mode (see 1.2.2 (3) i).
Using other than the above condition may cause the trouble of the writing.

Recommended Oscillating Conditions

(V_{SS} = 0 V, V_{DD} = 4.5 to 5.5 V, Topr = – 40 to 85°C)

Parameter	Oscillator	Oscillation Frequency	Recommended Oscillator		Recommended Constant	
					C ₁	C ₂
High-frequency Oscillation	Ceramic Resonator	16 MHz	MURATA	CSA16.00MXZ040	10 pF	10 pF
		8 MHz	MURATA	CSA8.00MTZ	30 pF	30 pF
				CST8.00MTW	30 pF (built-in)	30 pF (built-in)
Low-frequency Oscillation	Crystal Oscillator	32.768 kHz	SII	VT-200	30 pF	30 pF
					30 pF (built-in)	30 pF (built-in)

www.DataSheet4U.com



Note 1: An electrical shield by metal shield plate on the surface of IC package is recommended in order to protect the device from the high electric field stress applied from CRT (Cathodic Ray Tube) for continuous reliable operation.

*Note 2: The product numbers and specifications of the resonators by Murata Manufacturing Co., Ltd. are subject to change. For up-to-date information, please refer to the following URL;
<http://www.murata.co.jp/search/index.html>*

