



SHANGHAI AVIC OPTOELECTRONICS

CO-Q/S1014-2011

MODEL NO. : TM190MCS01ISSUED DATE: 2011/08/28VERSION : 1.1☐ Preliminary Specification☒ Final Product Specification

Customer : \_\_\_\_\_

Approved by	Notes

SHANGHAI AVIC Confirmed :

Prepared by	Checked by	Approved by
James xiao	Haijun he	Xiaoping sun

This technical specification is subjected to change without notice

The information contained herein is the exclusive property of SHANGHAI AVIC OPTOELECTRONICS Corporation, and shall not be distributed, reproduced, or disclosed in whole or in part without prior written permission of SHANGHAI AVIC OPTOELECTRONICS Corporation.



## TABLE OF CONTENTS

TABLE OF CONTENTS .....	2
RECORD OF REVISION.....	3
1. OUTLINE .....	4
1.1 STRUCTURE AND PRINCIPLE .....	4
1.2 APPLICATIONS.....	4
1.3 FEATURES.....	4
2. GENERAL SPECIFICATIONS .....	5
3. ABSOLUTE MAXIMUM RATINGS .....	6
4. BLOCK DIAGRAM.....	7
5. MECHANICAL SPECIFICATIONS.....	8
6. ELECTRICAL CHARACTERISTICS .....	9
6.1 DRIVING FOR LCD .....	9
6.2 DRIVING FOR BACKLIGHT .....	10
7. CONNECTIONS AND FUNCTIONS FOR INTERFACE PINS.....	11
7.1 LVDS .....	11
7.2 BACKLIGHT .....	12
7.3 POSITION OF PLUGS AND A SOCKET .....	12
7.4 CONNECTION BETWEEN RECEIVER AND TRANSMITTER FOR LVDS.....	13
8. DISPLAY COLORS AND INPUT DATA SIGNALS .....	14
9. INTERFACE TIMING .....	15
9.1 TIMING CHARACTERISTICS.....	15
9.2 INPUT SIGNAL TIMING CHART .....	16
9.3 PIXEL DATA ALIGNMENT OF DISPLAY IMAGE.....	17
9.4. POWER SUPPLY VOLTAGE SEQUENCE .....	18
10. OPTICS.....	20
11. RELIABILITY TESTS .....	23
12. MARKINGS .....	25
12.1 PRODUCT LABEL.....	25
12.2 INDICATION LOCATIONS .....	26
13. PACKING, TRANSPORTATION AND DELIVERY .....	27
14. PRECAUTIONS.....	29
15. OUTDRAWING .....	32

The information contained herein is the exclusive property of SHANGHAI AVIC OPTOELECTRONICS Corporation, and shall not be distributed, reproduced, or disclosed in whole or in part without prior written permission of SHANGHAI AVIC OPTOELECTRONICS Corporation.



## RECORD OF REVISION

Rev	Issued Date	Description	Editor
1.0	2011-02-20	Preliminary Release	Wei Zhang
1.1	2011-08-28	Modify view angle from L/R/U/D:45/45/45/25 to 45/45/25/45; Final Release ; t5 >200ms change to t5 >500ms ; Add Reliability test	James xiao

The information contained herein is the exclusive property of SHANGHAI AVIC OPTOELECTRONICS Corporation, and shall not be distributed, reproduced, or disclosed in whole or in part without prior written permission of SHANGHAI AVIC OPTOELECTRONICS Corporation.



## 1. OUTLINE

### 1.1 STRUCTURE AND PRINCIPLE

TM190MCS01 module is composed of the amorphous silicon thin film transistor liquid crystal display (a-Si TFT LCD) panel structure with driver LSIs for driving the TFT (Thin Film Transistor) array and a backlight. The a-Si TFT LCD panel structure is injected liquid crystal material into a narrow gap between the TFT array glass substrate and a color-filter glass substrate.

Color (Red, Green, Blue) data signals from a host system (e.g. PC, signal generator, etc.) are modulated into best form for active matrix system by a signal processing board, and sent to the driver LSIs which drive the individual TFT arrays. The TFT array as an electro-optical switch regulates the amount of transmitted light from the backlight assembly, when it is controlled by data signals. Color images are created by regulating the amount of transmitted light through the TFT array of red, green and blue dots.

### 1.2 APPLICATIONS

- Monitor for PC

### 1.3 FEATURES

- a-Si TFT active matrix
- LVDS interface
- R.G.B input 8bit, 16.7 millions colors
- Resolution WXGA+ (1,440× 900 pixels)
- Wide viewing angle 45°/45° (L/R); 25°/45° (U/D)
- High contrast ratio 600:1
- Module size 428.0 (H) ×278.0 (V) ×12.5 (D) mm
- Fast response time (Ton+ Toff= 5 ms)
- High gamut (72%)
- Edge light type backlight (2CCFL Lamps)
- Inverter less
- RoHS compliance
- TCO 5.0 compliance

---

The information contained herein is the exclusive property of SHANGHAI AVIC OPTOELECTRONICS Corporation, and shall not be distributed, reproduced, or disclosed in whole or in part without prior written permission of SHANGHAI AVIC OPTOELECTRONICS Corporation.



## 2. GENERAL SPECIFICATIONS

Display area	408.24 (H) × 255.15 (V) mm (typ.)
Diagonal size of display	48.1 cm
Drive system	a-Si TFT active matrix
Display color	16.7 M colors (6bit+ Hi-FRC)
Pixel	1,440 (H) × 900(V) pixels
Pixel arrangement	RGB vertical stripe
Dot pitch	0.0945 (H) × 0.2835(V) mm
Pixel pitch	0.2835 (H) × 0.2835 (V) mm
Module size	428.0 (H) × 278.0 (V) × 12.5 (D) mm
Weight	1.9KG
Contrast ratio	600 :1 (typ.)
Viewing angle	90°/ 70° (typ.)
Color gamut	72 % (typ.)
Response time	5 ms (typ.)
Luminance	200 cd/m <sup>2</sup> (typ.)
Transmissive Mode	Normally White
Surface Treatment	Anti Glare
Signal system	LVDS 2port
Power supply voltage	LCD panel signal processing board: 5.0V
Backlight	2CCFL Lamps
Power consumption	(16.0W) (Typ.)

The information contained herein is the exclusive property of SHANGHAI AVIC OPTOELECTRONICS Corporation, and shall not be distributed, reproduced, or disclosed in whole or in part without prior written permission of SHANGHAI AVIC OPTOELECTRONICS Corporation.



### 3. ABSOLUTE MAXIMUM RATINGS

Parameter		Symbol	Rating	Unit	Remarks
Power supply voltage	Power voltage	VDD	-0.3 ~ +6.0	V	Ta = 25°C
	Lamp voltage	V <sub>BLH</sub>	666 ~ 814	Vrms	Ta = 25°C
Input voltage for signals		Vi	-0.3 ~ +3.3	V	Ta = 25°C
Lamp current		I <sub>BL</sub>	3.0~8.0	mA	Ta = 25°C For each lamp
Lamp Oscillation frequency		FO	30~80	kHz	Ta = 25°C
Storage temperature		Tst	-20 ~ +60	°C	Note 3
Operating temperature		Top	0 ~ +50	°C	Note 3, 4
Absolute humidity		AH	≤ 70	g/m <sup>3</sup>	Ta > 50°C
Operating altitude		-	≤ 4,850	m	0°C ≤ Ta ≤ 50°C
Storage altitude		-	≤ 13,600	m	-20°C ≤ Ta ≤ 60°C

Note1: Display signals are DA0+/-, DA1+/-, DA2+/-, DA3+/-, CKA+/-, DB0+/-, DB1+/-, DB2+/-, DB3+/-, and CKB+/-.

Note2: Function signal is MSL.

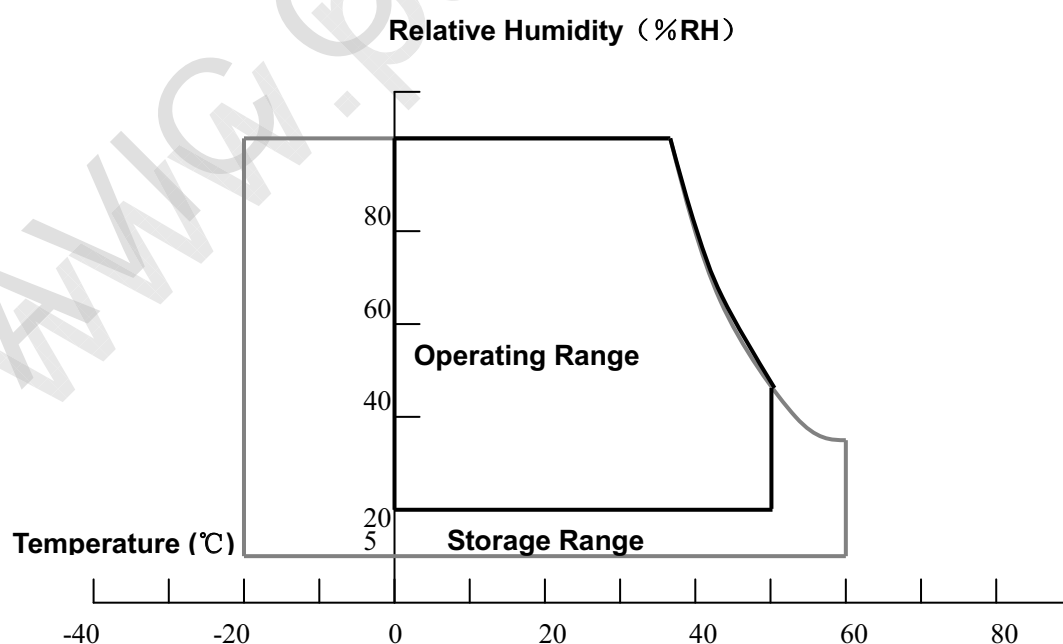
Note3: Temperature and relative humidity range is shown in the figure below.

(a) 90%RH Max. (Ta ≤ 40°C)

(b) Wet-bulb temperature should be 39°C Max. (Ta > 40°C)

(c) No condensation.

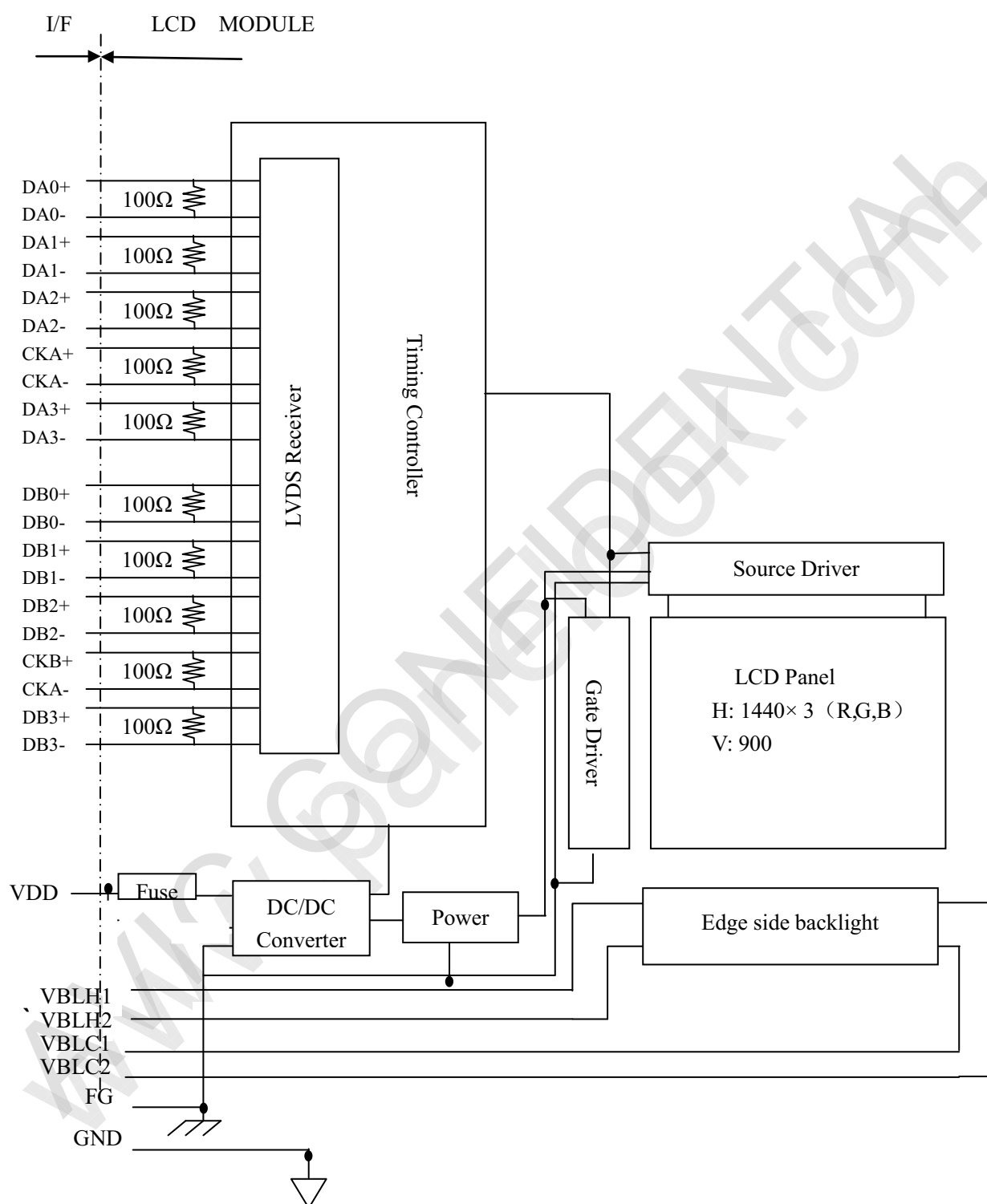
Note4: The temperature of panel display surface area should be 0°C Min and 60°C Max.



The information contained herein is the exclusive property of SHANGHAI AVIC OPTOELECTRONICS Corporation, and shall not be distributed, reproduced, or disclosed in whole or in part without prior written permission of SHANGHAI AVIC OPTOELECTRONICS Corporation.



## 4. BLOCK DIAGRAM



Note: System ground (GND), FG (Frame ground) in the product should be connected together in customer equipment.

The information contained herein is the exclusive property of SHANGHAI AVIC OPTOELECTRONICS Corporation, and shall not be distributed, reproduced, or disclosed in whole or in part without prior written permission of SHANGHAI AVIC OPTOELECTRONICS Corporation.



## 5. MECHANICAL SPECIFICATIONS

Parameter	Specification	Unit
Module size	$428.0 \pm 0.5$ (W) $\times$ $278.0 \pm 0.5$ (H) $\times$ $12.5 \pm 0.5$ (D)	mm
Display area	$408.24$ (H) $\times$ $255.15$ (V) mm (typ.), [48.1 cm]	mm
Weight	1.9 (typ.)	kg

The information contained herein is the exclusive property of SHANGHAI AVIC OPTOELECTRONICS Corporation, and shall not be distributed, reproduced, or disclosed in whole or in part without prior written permission of SHANGHAI AVIC OPTOELECTRONICS Corporation.





## 6. ELECTRICAL CHARACTERISTICS

### 6.1 DRIVING FOR LCD

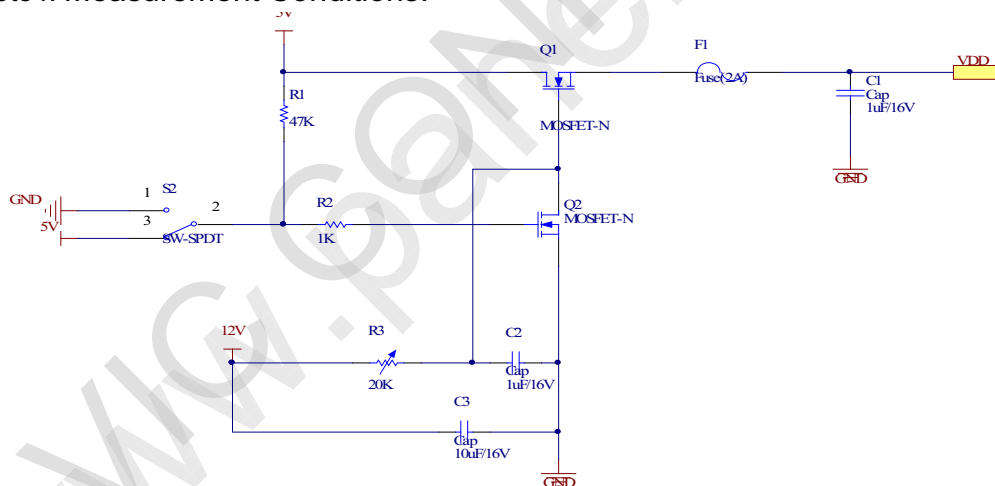
Parameter	Symbol	min.	typ.	max.	Unit	Remarks
Power supply voltage	VDD	4.5	5.0	5.5	V	-
Power supply current	IDD	-	700 Note1	1000 Note 2	mA	at VDD = 5.0V
Permissible ripple voltage	VRP	-	-	200	mV	VDD
Differential input voltage	Vid	200		600	mV	
Differential input threshold voltage for LVDS receiver	Low	VTL	-100	-	mV	at VCM = 1.2V Note3
	High	VTH	-	100	mV	
Input voltage width for LVDS receiver	Vi	0	-	3.3	V	-
Terminating resistor	RT	-	100	-	$\Omega$	-
Rush current	I <sub>rush</sub>	-	-	3.0	A	Note4

Note 1: Black pattern

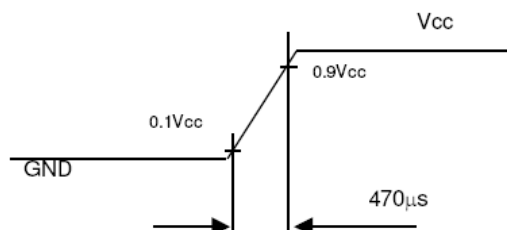
Note 2: 1H1V dot inverse pattern

Note 3: Common mode voltage for LVDS receiver

Note4: Measurement Conditions:



Vcc rising time is 470 $\mu$ s



The information contained herein is the exclusive property of SHANGHAI AVIC OPTOELECTRONICS Corporation, and shall not be distributed, reproduced, or disclosed in whole or in part without prior written permission of SHANGHAI AVIC OPTOELECTRONICS Corporation.



## 6.2 DRIVING FOR BACKLIGHT

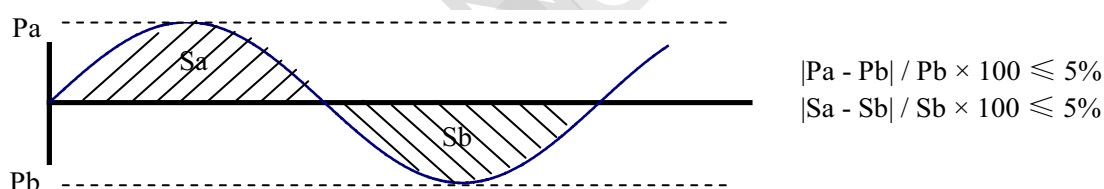
(Ta=25°C) Note1

Parameter	Symbol	min.	typ.	max.	Unit	Remarks
Lamp voltage (for reference)	$V_{BLH}$	-	740	-	Vrms	For each lamp
Lamp current	$I_{BL}$	3.0	7.5	8.0	mA rms	at $L = 200\text{cd/m}^2$
Lamp starting voltage Note1	$V_S$	1680	-	-	Vrms	Ta = 0°C Note2 Note3
		1460	-	-		Ta = 25°C Note2 Note3
Lamp operating lifetime	Hr	-	50000	-	Hour	Note5
Oscillation frequency	FO	30	50	80	kHz	Note4

Note1: The backlight of this product is made up of 4 lamps. The specification above is only for one lamp.

Note2: The voltage timing cycle of each lamp should be set as the same phase.  $[V_S]$  and  $[V_{BLH}]$  is the voltage between the high port and low port, the value is the characteristic of lamp. The starting voltage of inverter should be higher than the value. The possibility of not lighting exists by the lower voltage, so the suitable voltage should be considered by the test.

Note3: The asymmetric ratio of working waveform for lamps (Lamp voltage peak ratio, Lamp current peak ratio and waveform area ratio) should be less than 5% (See the following figure). If the waveform is asymmetric, DC (Direct current) element applies into the lamp. In this case, a lamp lifetime may be shortened, because a distribution of a lamp enclosure substance inclines toward one side between low voltage terminal (Cold terminal) and high voltage terminal (Hot terminal).



Pa: Supply voltage/current peak for positive, Pb: Supply voltage/current peak for negative

Sa: Waveform space for positive part, Sb: Waveform space for negative part

Note4: In case "FO" is not the recommended value, beat noise may display on the screen, because of interference between "FO" and "1/th". Recommended value of "FO" is as following.

$$FO = 1/4 \times 1/th \times (2n-1)$$

Th: Horizontal signal period (See "9.0Timing characteristics".)

n: Natural number (1, 2, 3 .....)

Note5: Lamp operating lifetime is mean time to half-luminance. In case the product works under room temperature environment.



## 7. CONNECTIONS AND FUNCTIONS FOR INTERFACE PINS

### 7.1 LVDS

CN1: FI-XB30SSRLA-HF16 (Produced by JAE) or 187007-30091-1( P-TWO)

Pin	Name	Description
1	RXO0-	Negative LVDS differential data input. Channel O0 (odd)
2	RXO0+	Positive LVDS differential data input. Channel O0 (odd)
3	RXO1-	Negative LVDS differential data input. Channel O1 (odd)
4	RXO1+	Positive LVDS differential data input. Channel O1 (odd)
5	RXO2-	Negative LVDS differential data input. Channel O2 (odd)
6	RXO2+	Positive LVDS differential data input. Channel O2 (odd)
7	GND	Ground
8	RXOC-	Negative LVDS differential clock input. (odd)
9	RXOC+	Positive LVDS differential clock input. (odd)
10	RXO3-	Negative LVDS differential data input. Channel O3(odd)
11	RXO3+	Positive LVDS differential data input. Channel O3 (odd)
12	RXE0-	Negative LVDS differential data input. Channel E0 (even)
13	RXE0+	Positive LVDS differential data input. Channel E0 (even)
14	GND	Ground
15	RXE1-	Negative LVDS differential data input. Channel E1 (even)
16	RXE1+	Positive LVDS differential data input. Channel E1 (even)
17	GND	Ground
18	RXE2-	Negative LVDS differential data input. Channel E2 (even)
19	RXE2+	Positive LVDS differential data input. Channel E2 (even)
20	RXEC-	Negative LVDS differential clock input. (even)
21	RXEC+	Positive LVDS differential clock input. (even)
22	RXE3-	Negative LVDS differential data input. Channel E3 (even)
23	RXE3+	Positive LVDS differential data input. Channel E3 (even)
24	GND	Ground
25	GND	Ground
26	NC	Not connection.
27	GND	Ground
28	VCC	+5.0V power supply
29	VCC	+5.0V power supply
30	VCC	+5.0V power supply

The information contained herein is the exclusive property of SHANGHAI AVIC OPTOELECTRONICS Corporation, and shall not be distributed, reproduced, or disclosed in whole or in part without prior written permission of SHANGHAI AVIC OPTOELECTRONICS Corporation.



## 7.2 BACKLIGHT

CN201: BHSR-02VS-1/Locking

Adaptable connector: SM02B-BHSS-1-TB

Pin No.	Signal name	Function
1	VH1	High voltage input terminal for upper lamp (Cable color: Blue)
2	VL1	Low voltage input terminal for upper lamp (Cable color: Black)

CN202: BHSR-02VS-1 /Locking

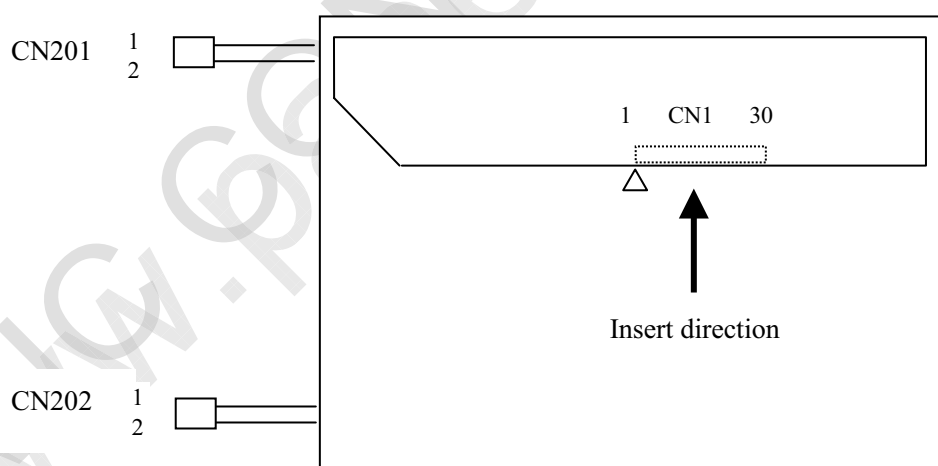
Adaptable connector: SM02B-BHSS-1-TB

Pin No.	Signal name	Function
1	VH2	High voltage input terminal for upper lamp (Cable color: Pink)
2	VL2	Low voltage input terminal for upper lamp (Cable color: White)

Note1: The ports of VDD and GND should be all used. As for the input of LVDS, please use the twisted pair wire of the transmission impedance 100Ω.

Note2: System ground (GND), FG (Frame ground) and VBLC (Lamp low voltage terminal) in the product should be connected together in customer equipment.

## 7.3 POSITION OF PLUGS AND A SOCKET





SHANGHAI AVIC OPTOELECTRONICS

CO-Q/S1014-2011

## 7.4 CONNECTION BETWEEN RECEIVER AND TRANSMITTER FOR LVDS

Input DATA		Transmitter		CN1	
		pin	DS90CF383,C385 or equivalent		
Odd pixel data and control signals	RA0	→ 51	TXIN0	pin	Symbol
	RA1	→ 52	TXIN1	1	DA0-
	RA2	→ 54	TXIN2	2	DA0+
	RA3	→ 55	TXIN3		
	RA4	→ 56	TXIN4	3	DA1-
	RA5	→ 3	TXIN6	4	DA1+
	GA0	→ 4	TXIN7		
	GA1	→ 6	TXIN8	5	DA2-
	GA2	→ 7	TXIN9	6	DA2+
	GA3	→ 11	TXIN12	7	GND
	GA4	→ 12	TXIN13	8	CKA-
	GA5	→ 14	TXIN14	9	CKA+
	BA0	→ 15	TXIN15		
	BA1	→ 19	TXIN18	10	DA3-
	BA2	→ 20	TXIN19	11	DA3+
	BA3	→ 22	TXIN20		
	BA4	→ 23	TXIN21		
	BA5	→ 24	TXIN22		
	RSVD	→ 27	TXIN24		
	RSVD	→ 28	TXIN25		
	DE	→ 30	TXIN26		
	RA6	→ 50	TXIN27		
	RA7	→ 2	TXIN5		
	GA6	→ 8	TXIN10		
	GA7	→ 10	TXIN11		
	BA6	→ 16	TXIN16		
	BA7	→ 18	TXIN17		
	RSVD	→ 25	TXIN23		
	CLK	→ 31	CLKIN		
Even pixel data	RB0	→ 51	TXIN0		
	RB1	→ 52	TXIN1	12	DB0-
	RB2	→ 54	TXIN2	13	DB0+
	RB3	→ 55	TXIN3	14	GND
	RB4	→ 56	TXIN4	15	DB1-
	RB5	→ 3	TXIN6	16	DB1+
	GB0	→ 4	TXIN7	17	GND
	GB1	→ 6	TXIN8	18	DB2-
	GB2	→ 7	TXIN9	19	DB2+
	GB3	→ 11	TXIN12		
	GB4	→ 12	TXIN13	20	CKB-
	GB5	→ 14	TXIN14	21	CKB+
	BB0	→ 15	TXIN15		
	BB1	→ 19	TXIN18	22	DB3-
	BB2	→ 20	TXIN19	23	DB3+
	BB3	→ 22	TXIN20	24	GND
	BB4	→ 23	TXIN21	25	GND
	BB5	→ 24	TXIN22	26	NC
	RSVD	→ 27	TXIN24	27	GND
	RSVD	→ 28	TXIN25	28	VDD
	RSVD	→ 30	TXIN26	29	VDD
	RB6	→ 50	TXIN27	30	VDD
	RB7	→ 2	TXIN5		
	GB6	→ 8	TXIN10		
	GB7	→ 10	TXIN11		
	BB6	→ 16	TXIN16		
	BB7	→ 18	TXIN17		
	RSVD	→ 25	TXIN23		
	CLK	→ 31	CLKIN		

Note1: The lowest bit (RA0, GA0, BA0, RB0, GB0, BB0), the most upper bit (RA7, GA7, BA7, RB7, GB7, BB7)

Note2: Connecting cable between LCD panel's connector and transmitter should use 100Ω twisted line.

Note3: If only Hsync and Vsync, the product don't work. Make sure DE signal has been input.

The information contained herein is the exclusive property of SHANGHAI AVIC OPTOELECTRONICS Corporation, and shall not be distributed, reproduced, or disclosed in whole or in part without prior written permission of SHANGHAI AVIC OPTOELECTRONICS Corporation.



## 8. DISPLAY COLORS AND INPUT DATA SIGNALS

This product can display in equivalent to 16,777,216 colors in 256 scales. Also the relation between display colors and input data signals is as the following table.

Display colors		Data signal (0:Low level, 1:High Level)																								
		R7	R6	R5	R4	R3	R2	R1	R0	G7	G6	G5	G4	G3	G2	G1	G0	B7	B6	B5	B4	B3	B2	B1	B0	
Basic Color	Black	0	0	0	0	0	0	0	0	0	0	0	0	0	0	0	0	0	0	0	0	0	0	0	0	
	Blue	0	0	0	0	0	0	0	0	0	0	0	0	0	0	0	0	1	1	1	1	1	1	1	1	
	Red	1	1	1	1	1	1	1	1	0	0	0	0	0	0	0	0	0	0	0	0	0	0	0	0	
	Magenta	1	1	1	1	1	1	1	1	0	0	0	0	0	0	0	0	1	1	1	1	1	1	1	1	
	Green	0	0	0	0	0	0	0	0	1	1	1	1	1	1	1	1	0	0	0	0	0	0	0	0	
	Cyan	0	0	0	0	0	0	0	0	1	1	1	1	1	1	1	1	1	1	1	1	1	1	1	1	
	Yellow	1	1	1	1	1	1	1	1	1	1	1	1	1	1	1	1	0	0	0	0	0	0	0	0	
	White	1	1	1	1	1	1	1	1	1	1	1	1	1	1	1	1	1	1	1	1	1	1	1	1	
Red grayscale	Black	0	0	0	0	0	0	0	0	0	0	0	0	0	0	0	0	0	0	0	0	0	0	0	0	
	Dark ↑ ↓ Bright	0	0	0	0	0	0	0	1	0	0	0	0	0	0	0	0	0	0	0	0	0	0	0	0	
						:								:							:					
						:								:							:					
		1	1	1	1	1	1	0	1	0	0	0	0	0	0	0	0	0	0	0	0	0	0	0	0	
	Red	1	1	1	1	1	1	1	0	0	0	0	0	0	0	0	0	0	0	0	0	0	0	0	0	
		1	1	1	1	1	1	1	1	0	0	0	0	0	0	0	0	0	0	0	0	0	0	0	0	
	Green grayscale	Black	0	0	0	0	0	0	0	0	0	0	0	0	0	0	0	0	0	0	0	0	0	0	0	0
Dark ↑ ↓ Bright		0	0	0	0	0	0	0	0	0	0	0	0	0	0	0	1	0	0	0	0	0	0	0	0	
						:								:							:					
						:								:							:					
		0	0	0	0	0	0	0	0	0	1	1	1	1	1	1	0	1	0	0	0	0	0	0	0	
Green		0	0	0	0	0	0	0	0	1	1	1	1	1	1	1	0	0	0	0	0	0	0	0	0	
		0	0	0	0	0	0	0	0	1	1	1	1	1	1	1	1	0	0	0	0	0	0	0	0	
Blue grayscale		Black	0	0	0	0	0	0	0	0	0	0	0	0	0	0	0	0	0	0	0	0	0	0	0	0
	Dark ↑ ↓ Bright	0	0	0	0	0	0	0	0	0	0	0	0	0	0	0	0	0	0	0	0	0	0	1	0	
						:								:							:					
						:								:							:					
		0	0	0	0	0	0	0	0	0	0	0	0	0	0	0	0	0	1	1	1	1	1	1	0	1
	Blue	0	0	0	0	0	0	0	0	0	0	0	0	0	0	0	0	0	1	1	1	1	1	1	1	0
		0	0	0	0	0	0	0	0	0	0	0	0	0	0	0	0	0	1	1	1	1	1	1	1	1

The information contained herein is the exclusive property of SHANGHAI AVIC OPTOELECTRONICS Corporation, and shall not be distributed, reproduced, or disclosed in whole or in part without prior written permission of SHANGHAI AVIC OPTOELECTRONICS Corporation.



## 9. INTERFACE TIMING

### 9.1 TIMING CHARACTERISTICS

Parameter		Symbol	min.	typ.	max.	Unit	Remarks
Clock	Frequency	1/tc	37.04	44.45	55.56	MHz	LVDS transmitter input
		tc	27.0	22.50	18.0	ns	
	Rise time, Fall time	-	Refer to the timing characteristics of LVDS transmitter			ns	Note 1
	Duty	-				-	
Horizontal signals	Cycle	th	14.8	18.0	26.5	μs	55.5kHz(typ.)
			754	800	900	CLK	
	Display period	thd	720			CLK	-
Vertical signals	Cycle	tv	13.3	16.67	20	ms	60.0Hz(typ.)
			912	926	1100	H	
	Display period	tvd	900			H	-
DE/Data	Setup time	-	Refer to the timing characteristics of LVDS transmitter			ns	Note 1
	Hold time	-				ns	
	Rise time, Fall time	-				ns	

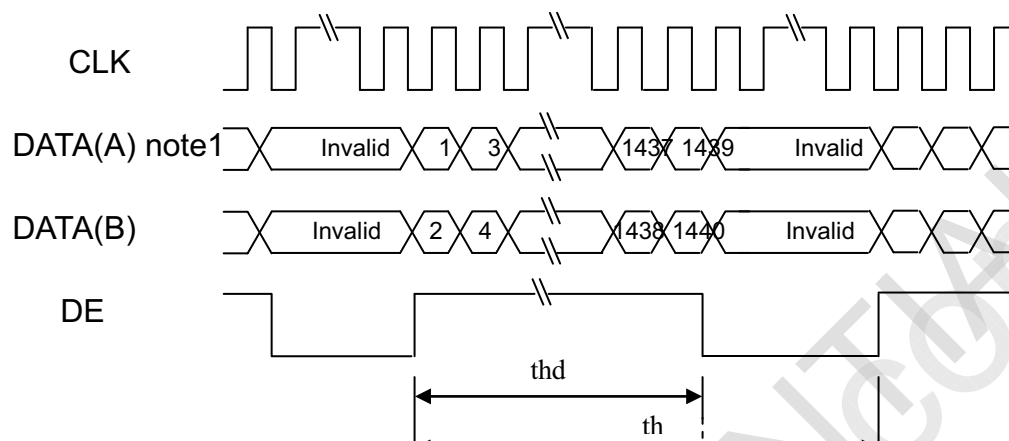
Note1: See the data sheet of LVDS transmitter.



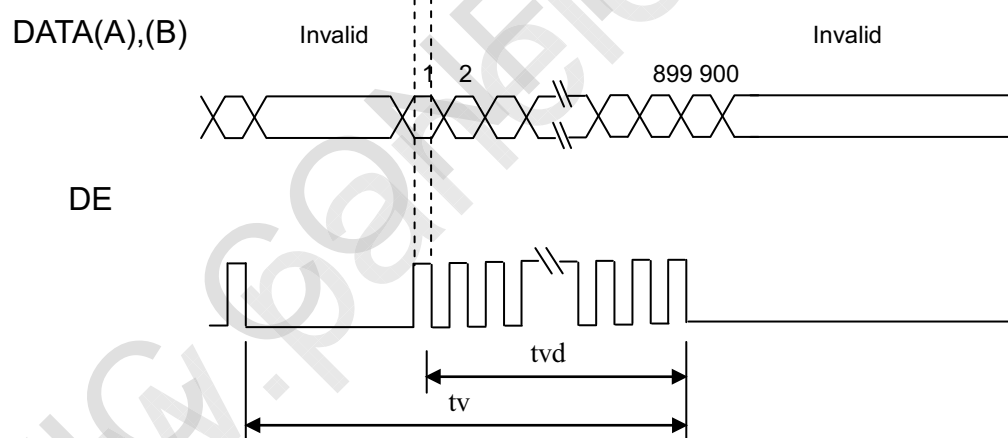


## 9.2 INPUT SIGNAL TIMING CHART

### Horizontal timing



### Vertical timing



Note 1:

DATA(A)=RA0-RA7,GA0-GA7,BA0-BA7

DATA(B)=RB0-RB7,GB0-GB7,BB0-BB7





### 9.3 PIXEL DATA ALIGNMENT OF DISPLAY IMAGE

The following chart is the coordinates of per pixel

Odd Pixel: RA= R DATA

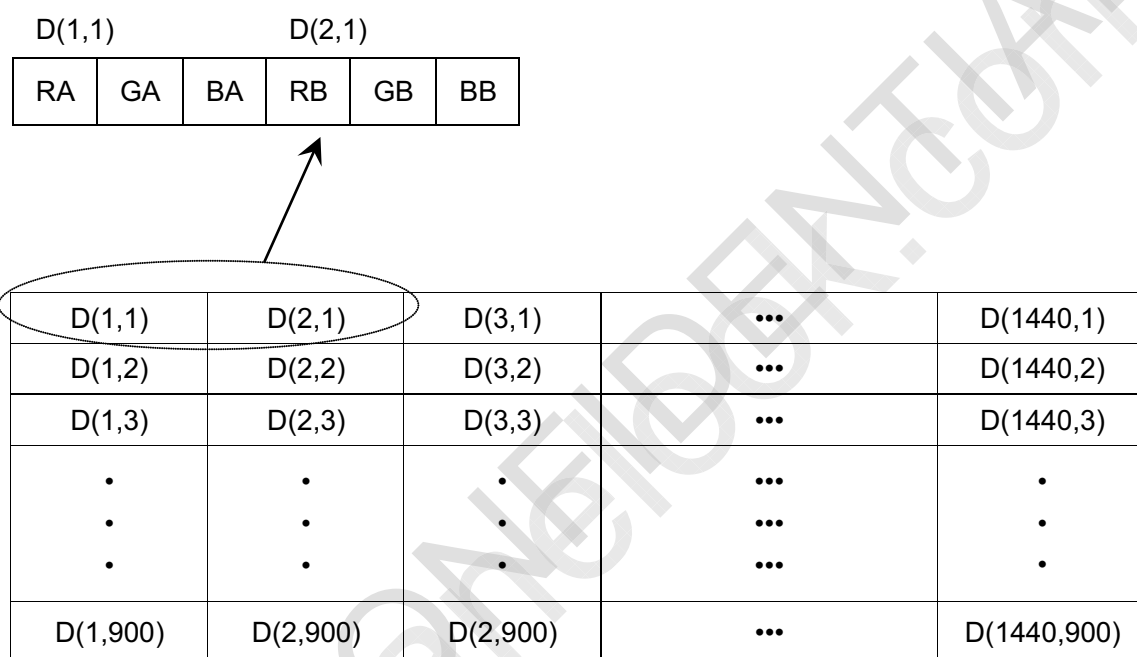
Even Pixel : RB=R DATA

GA= G DATA

GB=G DATA

BA= B DATA

BB=B DATA

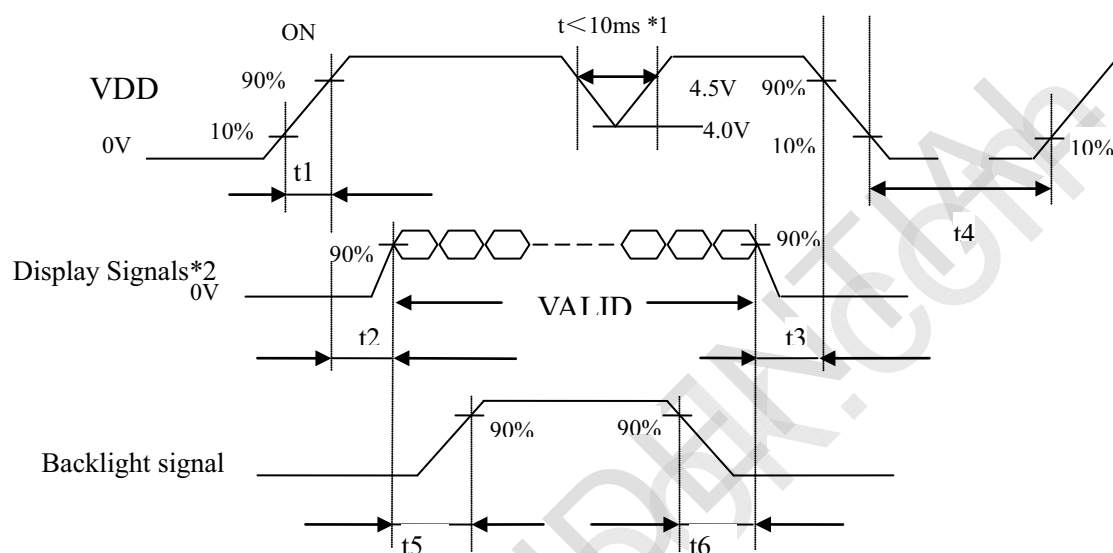


The information contained herein is the exclusive property of SHANGHAI AVIC OPTOELECTRONICS Corporation, and shall not be distributed, reproduced, or disclosed in whole or in part without prior written permission of SHANGHAI AVIC OPTOELECTRONICS Corporation.



## 9.4. POWER SUPPLY VOLTAGE SEQUENCE

### 9.4.1 The sequence of backlight and power



#### Timing Specifications:

- t1 0.47ms < t1 < 10ms
- t2 0.5 ms < t2 < 50ms
- t3 0ms < t3 < 50ms
- t4 > 1000ms
- t5 > 500ms
- t6 > 200ms

\*1. When VDD is on, but the value is lower than 4.5V, a protection circuit may work, then the module may not display.

\*2 The signal line is not connected with the module, at the end of cable the terminal resistor of 100Ω should be added.

Note1: Display signals (D0+/-, D1+/-, D2+/-, D3+/- and CK+/-) must be "0" voltage, exclude the VALID period (See above sequence diagram). If these signals are higher than 0.3 V, the internal circuit is damaged.

If some of display signals of this product are cut while this product is working, even if the signal input to it once again, it might not work normally. If customer stops the display signals, they should cut VDD.

Note2: When VDD is on, it should be set above 4.0V.

Note3: The backlight power supply voltage should be inputted within the valid period of display and function signals, in order to avoid unstable data display.

The information contained herein is the exclusive property of SHANGHAI AVIC OPTOELECTRONICS Corporation, and shall not be distributed, reproduced, or disclosed in whole or in part without prior written permission of SHANGHAI AVIC OPTOELECTRONICS Corporation.



## 9.4.2 Power supply voltage ripple

When the power supply is designed, the next form can give the reference. If the voltage ripple is over the value in next form, the noise should be seen in display area.

Ripple (Measured at input terminal of power supply)

	VDD (5V to drive the panel)
Ripple voltage	≤150mVP-P (Including spike noise)

## 9.4.3 Fuse

Parameter	Fuse		Rating	Fusing current	Remarks
	Type	Supplier			
VDD	F0603FA2000V032T	AEM	2A 32V	-	

Note1: There are different power supply systems from the power input terminal. The power supply capacity should be less than the fusing current. If the power supply capacity is above the fusing current, the fuse may blow in a short time, and then nasty smell, smoking and so on may occur.



## 10. OPTIC

### 10.1 Optical characteristics

Note1 ,Note2

Parameter Note1		Condition	Symbol	min.	typ.	max.	Unit	Remarks
Luminance		White at center θR=0°, θL=0°, θU=0°, θD=0°	L	160	200	-	cd/ m <sup>2</sup>	-
Contrast ratio		White/Black at center θR=0°, θL=0°, θU=0°, θD=0°	CR	(420)	600	-	-	Note3
Luminance uniformity		White θR=0°, θL=0°, θU=0°, θD=0	LU	-	1.25	(1.33)	-	Note4
Chromaticity	White	X coordinate	Wx	0.283	0.313	0.343	-	Note5
		Y coordinate	Wy	0.299	0.329	0.359	-	
	Red	X coordinate	Rx	0.617	0.647	0.677	-	
		Y coordinate	Ry	0.310	0.340	0.370	-	
	Green	X coordinate	Gx	0.253	0.283	0.313	-	
		Y coordinate	Gy	0.574	0.604	0.634	-	
	Blue	X coordinate	Bx	0.113	0.143	0.173	-	
		Y coordinate	By	0.037	0.067	0.097	-	
Color gamut		θR=0°, θL=0°, θU=0°, θD=0 At center,against NTSC	C	-	72	-	%	
Response time		White to black	Ton	-	1.3	(2.6)	ms	Note6 Note7
		Black to white	Toff	-	3.7	(7.4)	ms	
		Ton+ Toff	-	-	5	(10)	ms	
Viewing angle	Right	θU=0°, θD=0°, CR≥10	θR	-	45	-	°	Note8
	Left	θU=0°, θD=0°, CR≥10	θL	-	45	-	°	
	Up	θR=0°, θL=0°, CR≥10	θU	-	25	-	°	
	Down	θR=0°, θL=0°, CR≥10	θD	-	45	-	°	

Note1: The values in upper table are only initial characteristics.

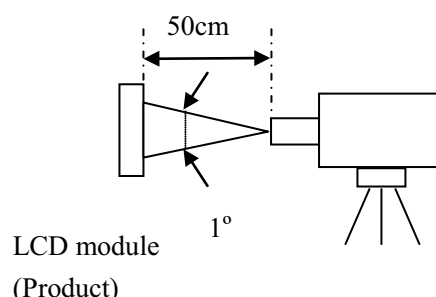
Note2: Measurement conditions are as follows.

Ta= 25°C, VDD= 5.0V, IBL= 6.5mArms/lamp, Display mode: WXGA+,

Horizontal cycle=55.56KHz, Vertical cycle=60.0Hz

Optical characteristics are measured at luminance saturation after 30minutes from working the product in the dark room. Also measurement method for luminance is as follows.

The information contained herein is the exclusive property of SHANGHAI AVIC OPTOELECTRONICS Corporation, and shall not be distributed, reproduced, or disclosed in whole or in part without prior written permission of SHANGHAI AVIC OPTOELECTRONICS Corporation.



Luminance Meter (TOPCON BM-5A)

Spectroradiometer (TOPCON SR-3)

Note 3: See “10.2 Definition of contrast ratio”.

Note 4: See “10.3 Definition of luminance uniformity”.

Note 5: CIE 1931 Chromaticity Diagram Standard.

Note 6: Product surface temperature: TopF = 33.0 °C

Note 7: See “10.4 Definition of response time”.

Note 8: See “10.5 Definition of viewing angle”.

## 10.2 Definition of contrast ratio

The contrast ratio is calculated by using the following formula.

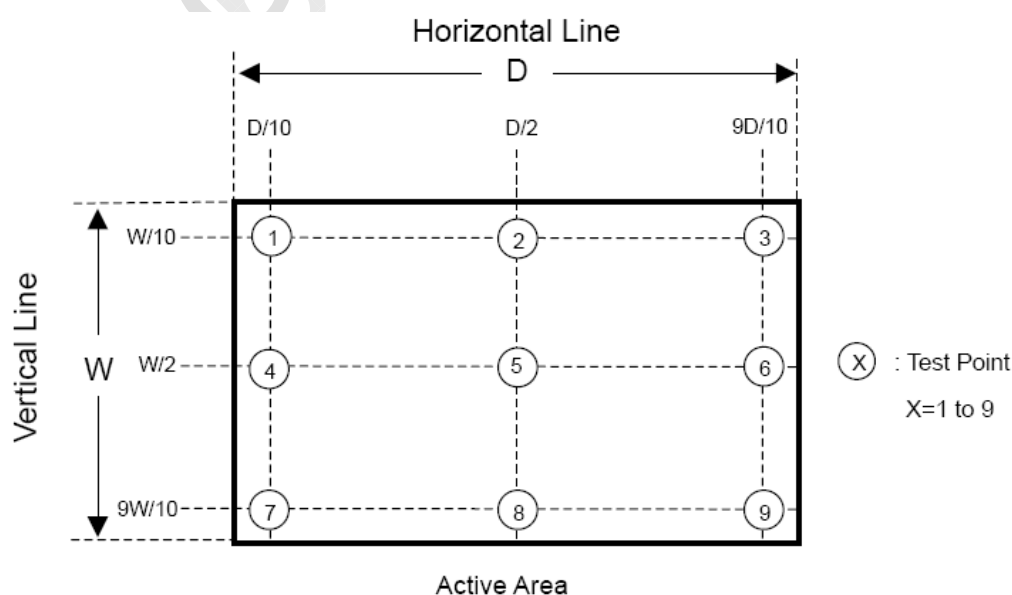
$$\text{Contrast ratio (CR)} = \frac{\text{Luminance of white screen}}{\text{Luminance of black screen}}$$

## 10.3 Definition of luminance uniformity

The luminance uniformity is calculated by using the following formula.

$$\text{Luminance uniformity (LU)} = \frac{\text{Maximum luminance from ① to ⑨}}{\text{Minimum luminance from ① to ⑨}}$$

The luminance is measured at near the 9 points shown below.

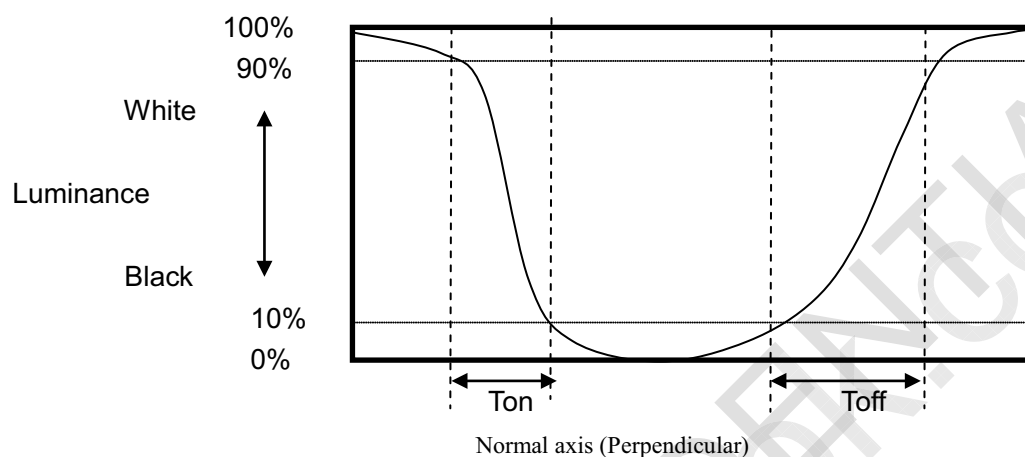


The information contained herein is the exclusive property of SHANGHAI AVIC OPTOELECTRONICS Corporation, and shall not be distributed, reproduced, or disclosed in whole or in part without prior written permission of SHANGHAI AVIC OPTOELECTRONICS Corporation.

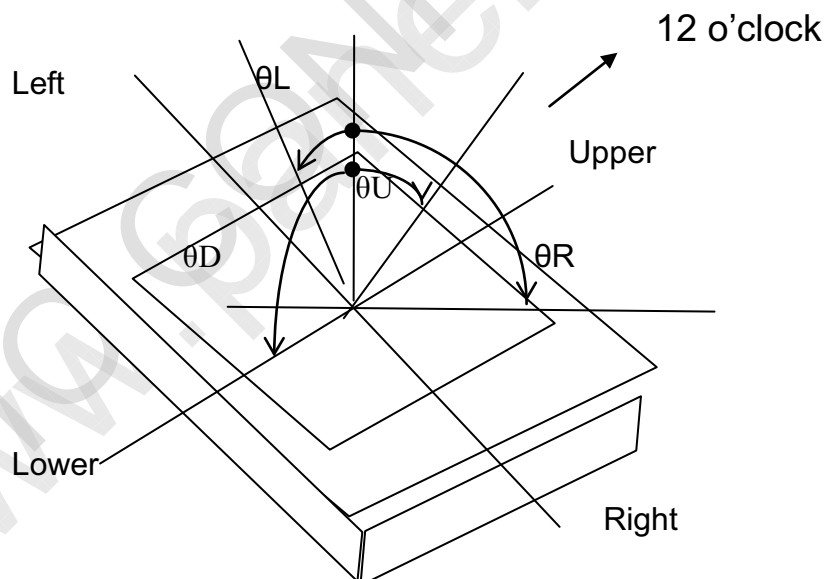


## 10.4 Definition of response times

Response time is measured, the luminance changes from “white” to “black”, or “black” to “white” on the same screen point, by photo-detector. Ton is the time it takes the luminance change from 90% down to 10%. Also Toff is the time it takes the luminance change from 10% up to 90%. (See the following diagram.)

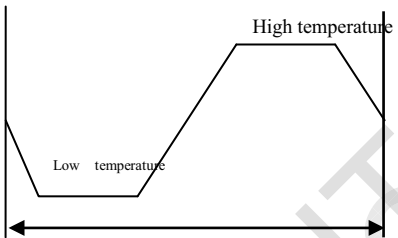


## 10.5 Definition of viewing angles





## 11. RELIABILITY TESTS

Test items	Condition
High temperature and humidity(Operation)	① $50\pm 2^{\circ}\text{C}$ , RH=85%,240hours ② Display data is black <b>Note1</b>
High /Low temperature (Operation)	① $55\pm 3^{\circ}\text{C}$ ...1hours ② $0\pm 3^{\circ}\text{C}$ ...1hours  ③ 50cycles ④ Display data is black
Thermal shock (Non operation)	① $-20\pm 3^{\circ}\text{C}$ ...30minutes $60\pm 3^{\circ}\text{C}$ ...30minutes ② 100cycles, 1hour/cycle ③ Temperature transition time is within 5 minutes.
ESD (operation)	① 150Pf,150 $\Omega$ , $\pm 2,4;6;8\text{kV}$ (contact) ② 150Pf,150 $\Omega$ , $\pm 2,4;8;15\text{kV}$ (non contact) ③ 7 places on a panel surface(contact) ④ 10 times each place at 1 sec interval <b>Note2</b>
Vibration (Non operation)	① 5-100-5Hz, Sine wave, acceleration of $11.76\text{m/s}^2$ ② 50 cycle ③ X,Y,Z direction ④ 1 time each direction
Mechanical shock (Non operation)	① $294\text{ m/s}^2$ , 11ms ② $\pm X$ , $\pm Y$ , $\pm Z$ direction ③ 3 times each direction
Dirt experiment	① Type: JIS Z—8901, 15 types ② Cycle: 1Hour ③ Times:15s every time ④ Light on by BL
Lattice chessboard	① room tempetature (SFT Series ) $55\pm 5^{\circ}\text{C}$ (TN Series) ② chessboard and top left corner black pattern ③ inspection time: occur : 0.5, 1, 2, 4, 7, 24 (0.5, 1, 4, 7, 24, 48) resume : 0.5, 2, 4, 7, 24, 48 (0.5, 2, 7, 24, 48) ( ) time specially for TN series
Imaging stick	① room tempetature ② chessboard pattern ③ 12Hours(ertra),30minutes judge

The information contained herein is the exclusive property of SHANGHAI AVIC OPTOELECTRONICS Corporation, and shall not be distributed, reproduced, or disclosed in whole or in part without prior written permission of SHANGHAI AVIC OPTOELECTRONICS Corporation.



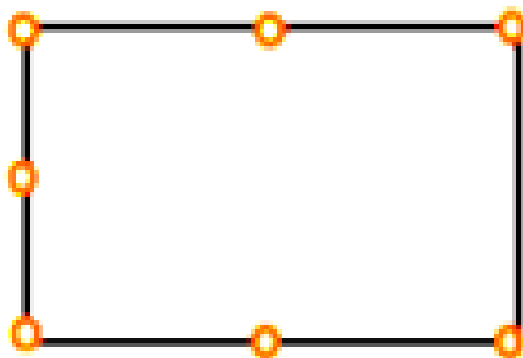
## SHANGHAI AVIC OPTOELECTRONICS

CO-Q/S1014-2011

Low pressure (Non operation)		① 15Kpa (Equivalent to altitude 13,600m) ② -20℃, 60℃, 24hours
Low pressure	operation	① 53.3kPa (Equivalent to altitude 5,100m) ② 0℃, 55℃,24hours ③ Display data is black

Note1: Display and appearance are checked under environmental conditions equivalent to the inspection conditions of defect criteria.

Note2: See the following figure for discharge points.



The information contained herein is the exclusive property of SHANGHAI AVIC OPTOELECTRONICS Corporation, and shall not be distributed, reproduced, or disclosed in whole or in part without prior written permission of SHANGHAI AVIC OPTOELECTRONICS Corporation.





## 12. MARKINGS

The various markings are attached to this product. See “11.2 INDECATION LOCATIONS” for attachment positions.

### 12.1 PRODUCT LABEL



Note1: The meaning of OEM number, Example: S190M50A12SA1SA109A0001

<u>S190M50A</u>	<u>12</u>	<u>SA1SA1</u>	<u>09A</u>	<u>0001</u>
Module Number	Source & Gate Driver IC Code	Location Line#	Date code	Serial Number

#### Date code:

##### 1st Character Year Codes

Month	2010	2011	2012	2013	2014	2015	2016	2017	2018	So on
Code	0	1	2	3	4	5	6	7	8	

##### 2nd Character Month Codes

Month	January	February	March	April	May	June	July	August	September	October	November	December
Code	1	2	3	4	5	6	7	8	9	A	B	C

##### 3rd Character Day Codes

Day	1st	2nd	3rd	4th	5th	6th	7th	8th	9th	10th	11st	12nd
Code	1	2	3	4	5	6	7	8	9	A	B	C

13rd	14th	15th	16th	17th	18th	19th	20th	21st	22nd	23rd	24th
D	E	F	G	H	J	K	L	M	N	P	Q

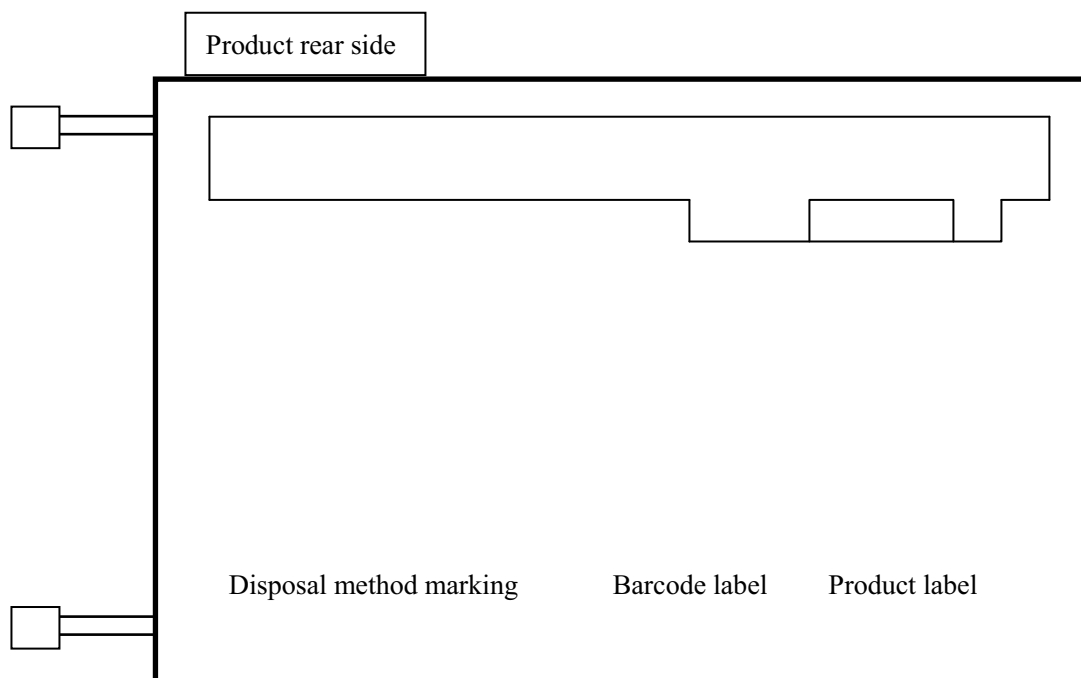
25th	26th	27th	28th	29th	30th	31st
R	S	T	U	V	W	X

Note2: Do not attach anything such as label and so on, on the product label! In case repair the product, AVIC needs the contents of product label such as the lot number, inspection date and so on, to identify the warranty period with individual product. If AVIC cannot decipher the contents of product label, such repair shall be entitled to charge. Also AVIC may give a new lot number to reconditioned products.

The information contained herein is the exclusive property of SHANGHAI AVIC OPTOELECTRONICS Corporation, and shall not be distributed, reproduced, or disclosed in whole or in part without prior written permission of SHANGHAI AVIC OPTOELECTRONICS Corporation.



## 12.2 INDICATION LOCATIONS





## 13. PACKING, TRANSPORTATION AND DELIVERY

AVIC will pack products to deliver to customer in accordance with AVIC packing specifications, and will deliver products to customer in such a state that products will not suffer from a damage during transportation .The delivery conditions are as follows.

### 13.1 PACKING

#### (1) Packing box

8 products are packed up with the maximum in a packing box(See “**12.5 OUTLINE FIGURE FOR PACKING**”).

Products are put into a plastic bag for prevention of moisture with cushion, and then the bag is sealed up with heat sealing.

The type name and quality are shown on outside of the packing box, either labeling or printing.

#### (2) Pallet Packing (See”**12.5 OUTLINE FIGURE FOR PACKING**”)

① Packing boxes are tired on a cardboard pallet(8 boxes×4 tiers maximum)

② Cardboard sleeve and top cap are attached to the packing boxes, then they are fixed by a band.

### 13.2 INSPECTION RECORD SHEET

Inspection record sheets are included in the packing box with delivery products to customer. It is summarized to a number of products for pass/fail assessment.

### 13.3 TRANSPORTATION

The product is transported by vehicle, aircraft or shipment in the state of pallet packing.

### 13.4 SIZE AND WEIGHT FOR PACKING BOX

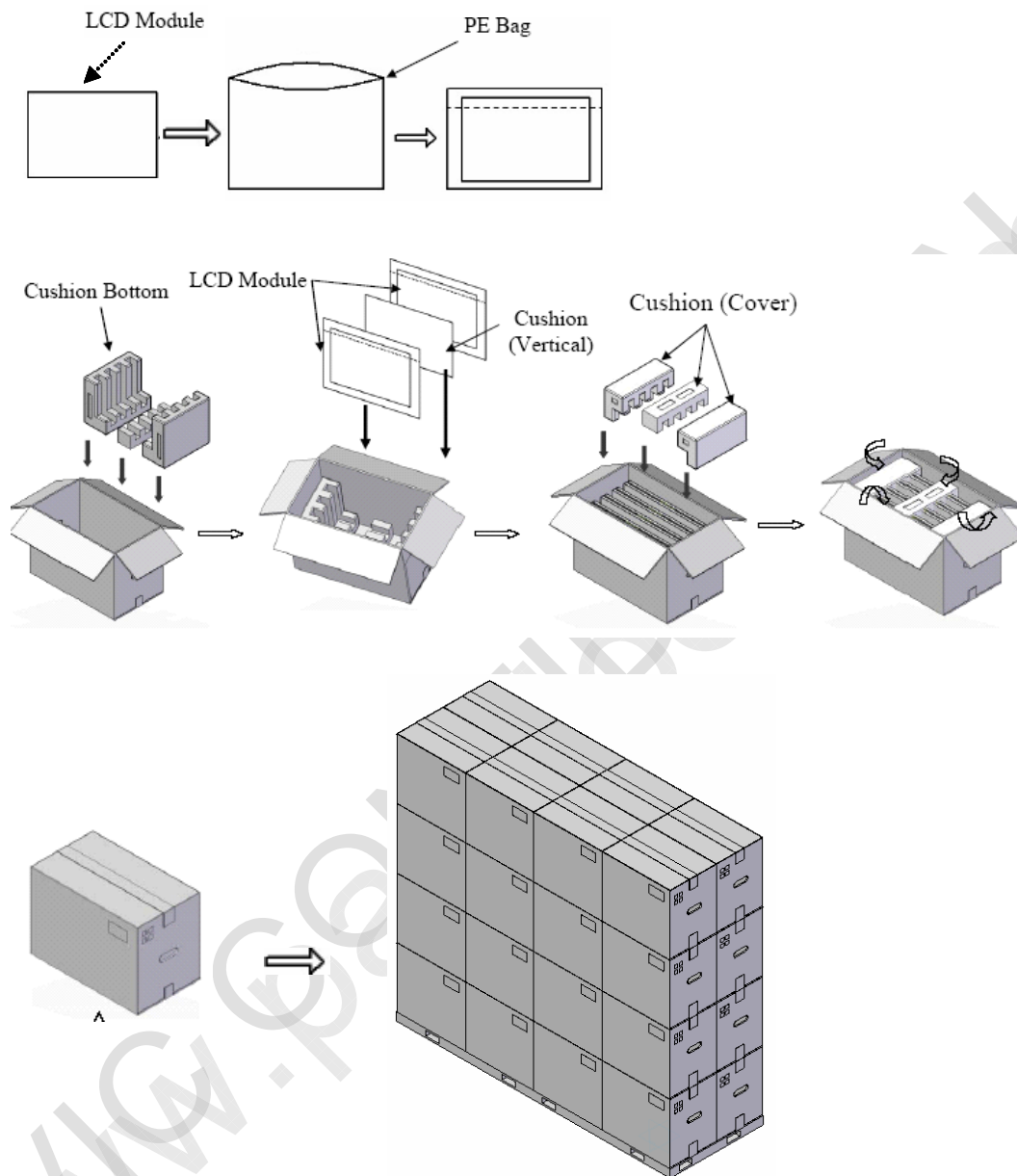
Parameter	Packing box	Unit
Size	485 (L) × 280 (W) × 330 (H) (typ.)	mm
Weight	1.9 (typ.)	kg
Total weight	16.5 (typ.) (with 8 products)	kg



SHANGHAI AVIC OPTOELECTRONICS

CO-Q/S1014-2011

## 13.5 OUTLINE FIGURE FOR PACKING



The information contained herein is the exclusive property of SHANGHAI AVIC OPTOELECTRONICS Corporation, and shall not be distributed, reproduced, or disclosed in whole or in part without prior written permission of SHANGHAI AVIC OPTOELECTRONICS Corporation.



## 14. PRECAUTIONS

### 14.1 MEANING OF CUTION SIGNS

The following caution signs have very important meaning .**Be sure to read “9.2 CAUTIONS” and “9.3 ATTENTIONS”, after understanding these contents!**



This sign have the meaning that customer will be injured by himself or the product will sustain a damage, if customer has wrong operations.



This sign has the meaning that customer will get an electrical shock, if customer has wrong operations.



This sign has the meaning that customer will be injured by himself, if customer has wrong operations.

### 14.2 CAUTIONS



**Do not touch lamp cables while turn on .Customers will be in danger of an electric shock**



- \* **Do not touch the working backlight and IC. Customers will be in danger of burn injury.**
- \* **Do not shock and press the LCD panel and the backlight! There is a danger of breaking, because they are made of glass.(shock :To be not greater  $294\text{m/s}^2$  and to be not greater 11ms, Pressure: To be not greater 19.6N)**

### 14.3 ATTENTIONS



#### 13.3.1 Handling of the product

- ① Take hold of both ends without touch the circuit board when customer pulls out products (LCD modules) from inner packing box. If customer touches it, products may be broken down or out of adjustment, because of stress to mounting parts.
- ② Do not hook cables nor pull connection cables such as flexible cable and so on , for fear of damage.
- ③ If customer puts down the product temporarily, the product puts on flat subsoil as a display side turns down.
- ④ Take the measures of electrostatic discharge such as earth band, ionic shower and so on, when customer deal with the product, because products may be damaged by electrostatic.

The information contained herein is the exclusive property of SHANGHAI AVIC OPTOELECTRONICS Corporation, and shall not be distributed, reproduced, or disclosed in whole or in part without prior written permission of SHANGHAI AVIC OPTOELECTRONICS Corporation.



- ⑤ The torque for mounting screws must never exceed 0.34N-m. Higher torque values might result in distortion of the bezel.
- ⑥ The product must be installed using mounting holes without undue stress such as bends or twist (See outline drawings). And do not add undue stress to any portion (such as bezel flat area) except mounting hole portion.
- ⑦ Bends or twist described above and undue stress to any portion except mounting hole portion may cause display un-uniformity.
- ⑧ Do not press or rub on the sensitive display surface. If customer clean on the panel surface, AVIC recommends using the cloth with ethanolic liquid such as screen cleaner for LCD.
- ⑨ Do not push-pull the interface connectors while the product is working, because wrong power sequence may break down the product.
- ⑩ Do not bend or unbend the lamp cable at the near part of the lamp holding rubber, to avoid the damage for high voltage side of the lamp. This damage may cause a lamp breaking and abnormal operation of high voltage circuit.

### 13.3.2 Environment

- ① Do not operate or store in high temperature, high humidity, dewdrop atmosphere or corrosive gases. Keep the product in antistatic pouch in room temperature, because of avoidance for dusts and sunlight, if customer stores the product.
- ② In order to prevent dew condensation occurring by temperature difference, the product packing box must be opened after leave under the environment of an unpacking room temperature enough. Because a situation of dew condensation occurring is changed by the environment temperature and humidity, evaluate the leaving time sufficiently. (Recommendation leaving time: 6 hour or more with packing state)
- ③ Do not operate in a high magnetic field. Circuit boards may be broken down by it.
- ④ This product is not designed as radiation hardened.
- ⑤ Use an original protection sheet on the product surface (polarizer). Adhesive type protection sheet should be avoided, because it may change color or properties of the polarizer.

### 14.3.3 Characteristics

**The following items are neither defects nor failures.**

- ① ambient temperature.
- ② The LCD may be seemed luminance non-uniformity, flicker, vertical seam or small spot by display patterns.
- ③ Optical characteristics (e.g. luminance, display uniformity, etc.) gradually is going to change depending on operating time, and especially low temperature, because the LCD has cold cathode fluorescent lamps.
- ④ Do not display the fixed pattern for a long time because it may cause image sticking. Use a screen saver, if the fixed pattern is displayed on the screen.
- ⑤ The display color may be changed by viewing angle because of the use of condenser sheet in the backlight.
- ⑥ Optical characteristics may be changed by input signal timings.

The information contained herein is the exclusive property of SHANGHAI AVIC OPTOELECTRONICS Corporation, and shall not be distributed, reproduced, or disclosed in whole or in part without prior written permission of SHANGHAI AVIC OPTOELECTRONICS Corporation.



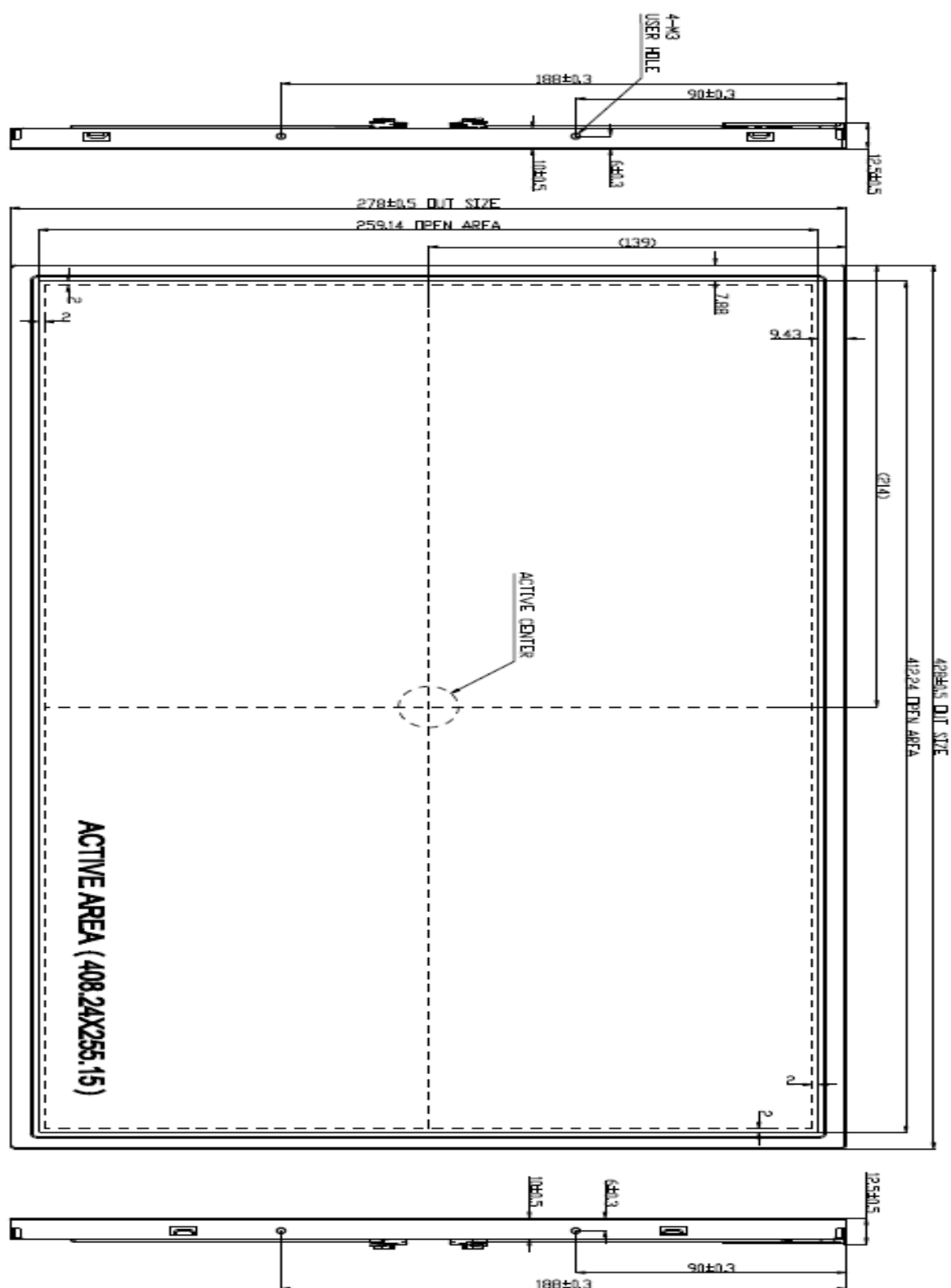
- ⑦ The interference noise of input signal frequency for this product and luminance control frequency of customer's backlight inverter may appear on a display. Set up luminance control frequency of backlight inverter so that the interference noise does not appear.

#### 14.4 Other

- ① All GND and VCC terminals should be used without a non-connected line.
- ② Do not disassemble a product or adjust volume without permission of AVIC.
- ③ Pay attention not to insert waste materials inside of products, if customer uses screw nails.
- ④ Pack the product with original shipping package, because of avoidance of some damages during transportation, when customer returns it to AVIC for repair and so on .
- ⑤ Not only the module but also the equipment should be packed and transported as the module. becomes vertical .Otherwise, there is the fear that a display dignity decreases by an impact or vibrations.



## 15. OUTDRAWING



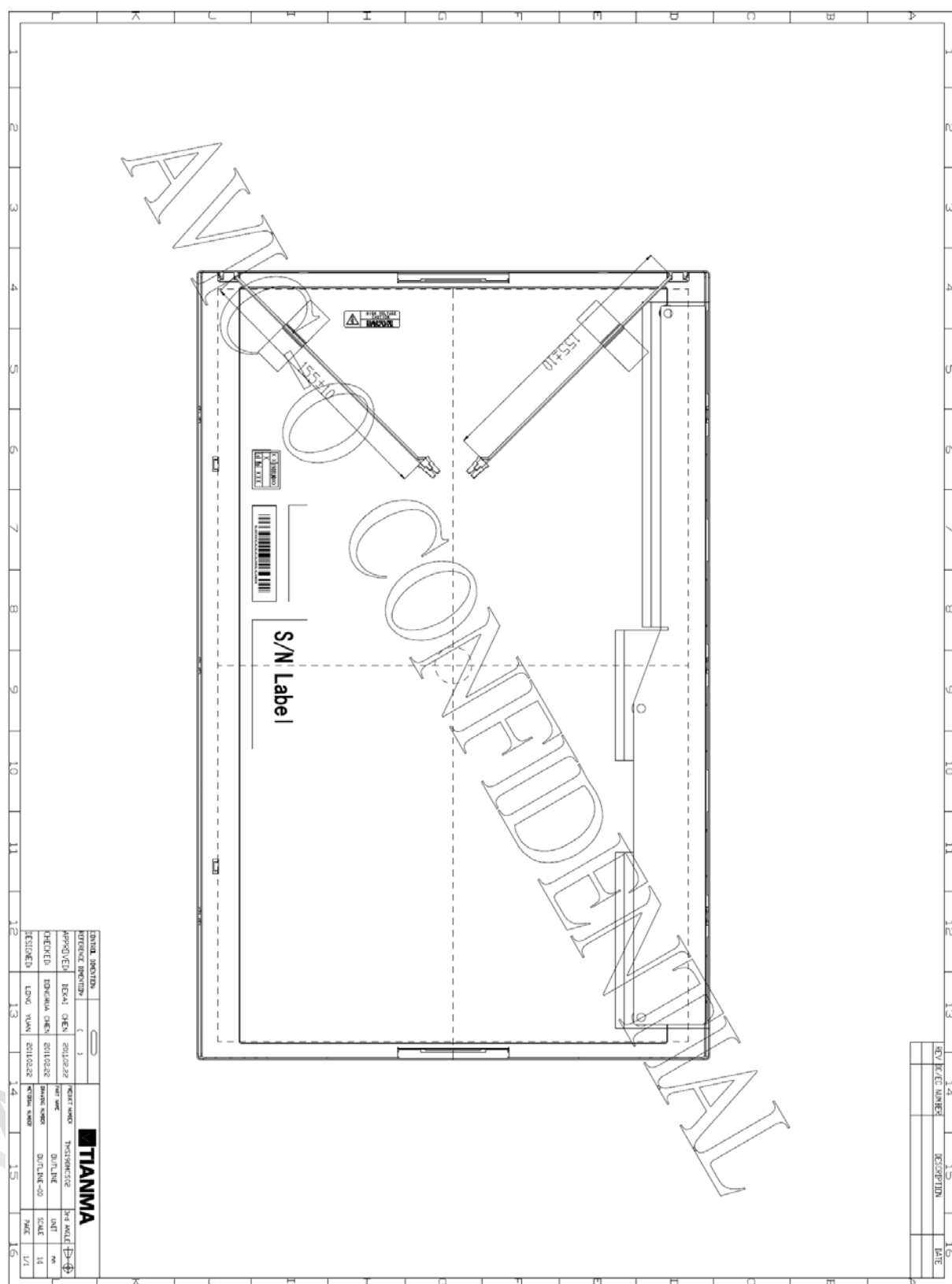
The information contained herein is the exclusive property of SHANGHAI AVIC OPTOELECTRONICS Corporation, and shall not be distributed, reproduced, or disclosed in whole or in part without prior written permission of SHANGHAI AVIC OPTOELECTRONICS Corporation.





SHANGHAI AVIC OPTOELECTRONICS

CO-Q/S1014-2011



The information contained herein is the exclusive property of SHANGHAI AVIC OPTOELECTRONICS Corporation, and shall not be distributed, reproduced, or disclosed in whole or in part without prior written permission of SHANGHAI AVIC OPTOELECTRONICS Corporation.