

TLA 2276 is designed to be used in a 2-coil hybrid transformer configuration with the following features:

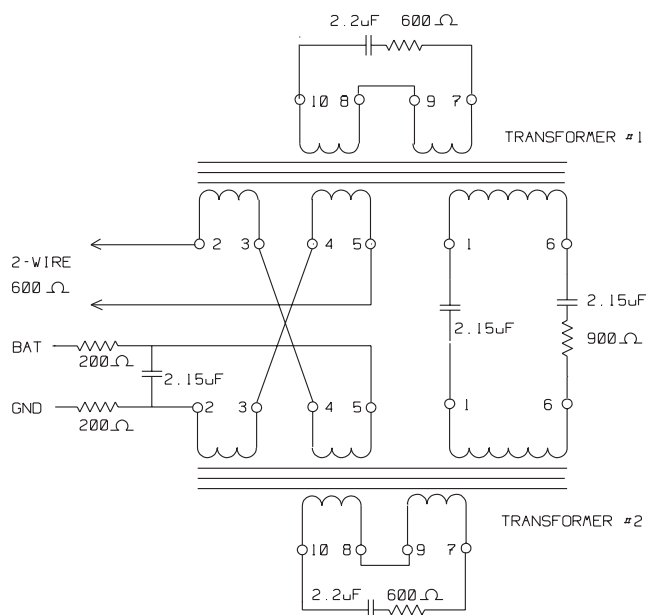
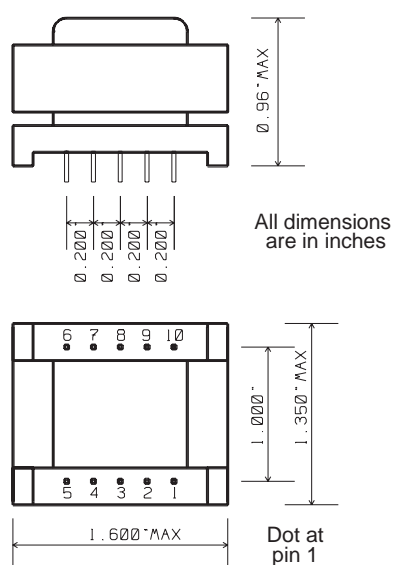
- Low Insertion Loss.
- High Return loss.
- DC capability.
- High Transhybrid Loss.

Applications:

Hybrid Interface between the 2-wire loop and the 4-wire circuit, and where DC handling capability is required on the 2-wire side.



MECHANICAL



ELECTRICAL

TLA 2276 has the following electrical performance in a 2-coil hybrid configuration, as per diagram, when terminated with specified impedances and with up to 70 mA loop current at the 2-wire port.

Insertion Loss	@1000 Hz	<1.0 dB
Frequency Response	300 - 4000 Hz	< 0.25 dB
Return Loss, 2-wire port	1000 - 2000 Hz	> 27 dB
	300 - 3500 Hz	> 20 dB
Longitudinal Balance	200 - 3000 Hz	> 76 dB
Transhybrid Loss	300 - 3000 Hz	> 46 dB
Dielelectric Strength	Pri. to Sec.	700 Vrms
	Winding to core	700 Vrms