

1. General

The filter is single ended driven. It is matched to $50\ \Omega$

The matching element values given below are valid on our test PCB. If the parasitic's on the customer PCB and on this PCB are different, the matching elements have to be optimised regarding the circuit and PCB design.

The matching elements have been chosen from the E12- series (European standard series with fixed tolerances).

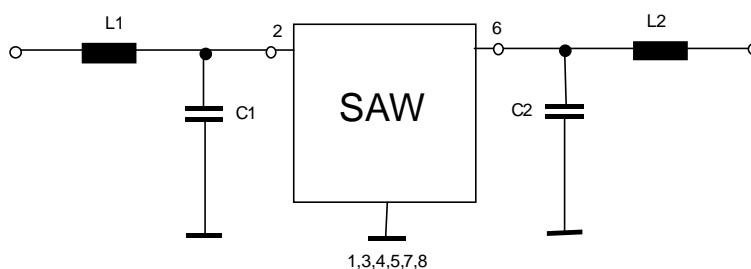
2. Theoretical matching

The termination impedances of the filter are:

Input impedance: $95\ \Omega \parallel -0,3\ \text{pF}$

Output impedance: $95\ \Omega \parallel -0,3\ \text{pF}$

The values of the matching elements which are given below are calculated from the input and output terminating impedance.



L1 = 6.8 nH

C1 = 0.3 pF

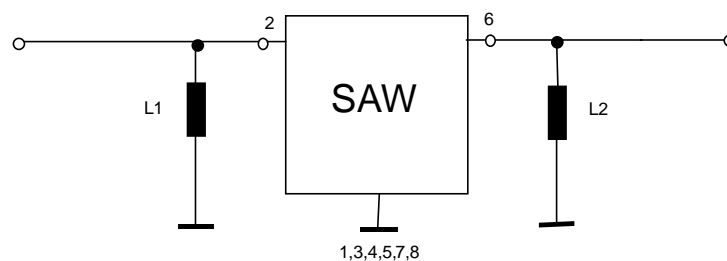
L2 = 5.8 nH

C2 = 0.27 pF

TELEFILTER GmbH
Potsdamer Straße 18
D 14 513 TELTOW / Germany
Tel: (+49) 3328 4784-0/ Fax: (+49) 3328 4784-30
E-Mail: tft@telefilter.com

VI TELEFILTER reserves the right to make changes to the product(s) and/or information contained herein without notice. No liability is assumed as a result of their use or application. No rights under any patent accompany the sale of any such product(s) or information.

3. Matching on PCB (tft038)



$$L1 = L2 = 6,8 \text{ nH}$$

All other components are 0 Ω jumpers.

The matching on the PCB does slightly differ from the theoretical matching. The reason for that are parasitic's on the PCB.

If the parasitic's on the customer board (mentioned parasitics, additional parasitics of active parts) are different to this PCB the matching elements have to be slightly adjusted.

In case of questions please contact us to

TELEFILTER GmbH
Potsdamer Straße 18
D 14 513 TELTOW / Germany
Tel: (+49) 3328 4784-0/ Fax: (+49) 3328 4784-30
E-Mail: tft@telefilter.com

VI TELEFILTER reserves the right to make changes to the product(s) and/or information contained herein without notice. No liability is assumed as a result of their use or application. No rights under any patent accompany the sale of any such product(s) or information.