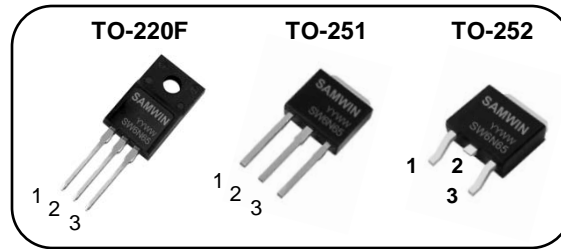


N-channel MOSFET

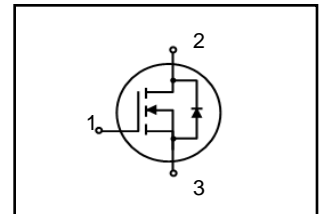
Features

- High ruggedness
- $R_{DS(ON)}$ (Max 1.5Ω) @ $V_{GS}=10V$
- Gate Charge (Typical 29nC)
- Improved dv/dt Capability
- 100% Avalanche Tested



1. Gate 2. Drain 3. Source

BV_{DSS} : 600V
 I_D : 6A
 $R_{DS(ON)}$: 1.5ohm



General Description

These N-channel enhancement mode power field effect transistors are produced using SAMWIN's proprietary, planar stripe, DMOS technology.

This advanced technology enable power MOSFET to have better characteristics, such as fast switching time, low on resistance, low gate charge and especially excellent avalanche characteristics. These devices are widely used in AC-DC power suppliers, DC-DC converters and H-bridge PWM motor drivers

Order Codes

Item	Sales Type	Marking	Package	Packaging
1	SW F 6N60	SW6N60	TO-220F	TUBE
2	SW I 6N60	SW6N60	TO-251	TUBE
3	SW D 6N60	SW6N60	TO-252	REEL

Absolute maximum ratings

Symbol	Parameter	Value		Unit
		TO-220F	TO-251/252	
V_{DSS}	Drain to Source Voltage	600		V
I_D	Continuous Drain Current (@ $T_C=25^\circ C$)	6.0*		A
I_{DM}	Drain current pulsed (note 1)	24*		A
V_{GS}	Gate to Source Voltage	± 30		V
E_{AS}	Single pulsed Avalanche Energy (note 2)	230		mJ
E_{AR}	Repetitive Avalanche Energy (note 1)	20		mJ
dv/dt	Peak diode Recovery dv/dt (note 3)	4.5		V/ns
P_D	Total power dissipation (@ $T_C=25^\circ C$)	50	24	W
	Derating Factor above 25°C	0.4	0.19	
T_{STG}, T_J	Operating Junction Temperature & Storage Temperature	-55 ~ + 150		°C
T_L	Maximum Lead Temperature for soldering purpose, 1/8 from Case for 5 seconds.	300		°C

*. Drain current is limited by junction temperature.

Thermal characteristics

Symbol	Parameter	Value			Unit
		TO-220F	TO-251	TO-252	
R_{thjc}	Thermal resistance, Junction to case	3.8	5.3		°C/W
R_{thcs}	Thermal resistance, Case to Sink	-	-		°C/W
R_{thja}	Thermal resistance, Junction to ambient	60	60		°C/W

Electrical characteristic ($T_C = 25^\circ\text{C}$ unless otherwise specified)

Symbol	Parameter	Test conditions	Min.	Typ.	Max.	Unit
Off characteristics						
BV_{DSS}	Drain to source breakdown voltage	$V_{GS}=0V, I_D=250\mu A$	600	-	-	V
$\Delta BV_{DSS} / \Delta T_J$	Breakdown voltage temperature coefficient	$I_D=250\mu A$, referenced to 25°C	-	0.79	-	V/ $^\circ\text{C}$
I_{DSS}	Drain to source leakage current	$V_{DS}=600V, V_{GS}=0V$	-	-	1	μA
		$V_{DS}=480V, T_C=125^\circ\text{C}$	-	-	10	μA
I_{GSS}	Gate to source leakage current, forward	$V_{GS}=30V, V_{DS}=0V$	-	-	100	nA
	Gate to source leakage current, reverse	$V_{GS}=-30V, V_{DS}=0V$	-	-	-100	nA
On characteristics						
$V_{GS(TH)}$	Gate threshold voltage	$V_{DS}=V_{GS}, I_D=250\mu A$	2.0	-	4.0	V
$R_{DS(ON)}$	Drain to source on state resistance	$V_{GS}=10V, I_D = 3A$	-	1.4	1.5	Ω
G_{fs}	Forward Transconductance	$V_{DS} = 40 V, I_D = 3 A$	5	-	-	S
Dynamic characteristics						
C_{iss}	Input capacitance	$V_{GS}=0V, V_{DS}=25V, f=1\text{MHz}$	-	600	700	pF
C_{oss}	Output capacitance		-	75	95	
C_{rss}	Reverse transfer capacitance		-	9	12	
$t_{d(on)}$	Turn on delay time	$V_{DS}=300V, I_D=6A$ (note 4, 5)	-	14	50	ns
t_r	Rising time		-	29	100	
$t_{d(off)}$	Turn off delay time		-	87	120	
t_f	Fall time		-	35.5	100	
Q_g	Total gate charge	$V_{DS}=480V, V_{GS}=10V, I_D=6A$ (note 4, 5)	-	29	50	nC
Q_{gs}	Gate-source charge		-	4.7	-	
Q_{gd}	Gate-drain charge		-	12.4	-	

Source to drain diode ratings characteristics

Symbol	Parameter	Test conditions	Min.	Typ.	Max.	Unit
I_S	Continuous source current	Integral reverse p-n Junction diode in the MOSFET	-	-	6	A
I_{SM}	Pulsed source current		-	-	24	A
V_{SD}	Diode forward voltage drop.	$I_S=6A, V_{GS}=0V$	-	-	1.5	V
T_{rr}	Reverse recovery time	$I_S=6A, V_{GS}=0V,$	-	309	-	ns
Q_{rr}	Breakdown voltage temperature	$di_f/dt=100A/\mu s$	-	2.6	-	μC

※. Notes

- Repetitive rating : pulse width limited by junction temperature.
- $L = 12.7\text{mH}, I_{AS} = 6A, V_{DD} = 25V, R_G=25\Omega$, Starting $T_J = 25^\circ\text{C}$
- $I_{SD} \leq 6A, di/dt = 100A/\mu s, V_{DD} \leq BV_{DSS}$, Starting $T_J = 25^\circ\text{C}$
- Pulse Test : Pulse Width $\leq 300\mu s$, duty cycle $\leq 2\%$
- Essentially independent of operating temperature.

Fig. 1. On-state characteristics

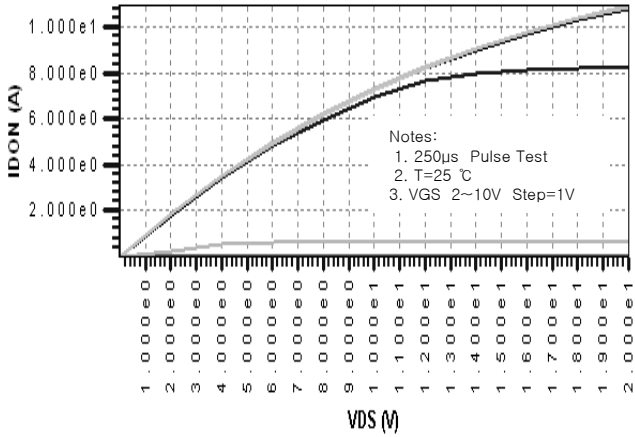


Fig. 2. On-resistance variation vs. drain current and gate voltage

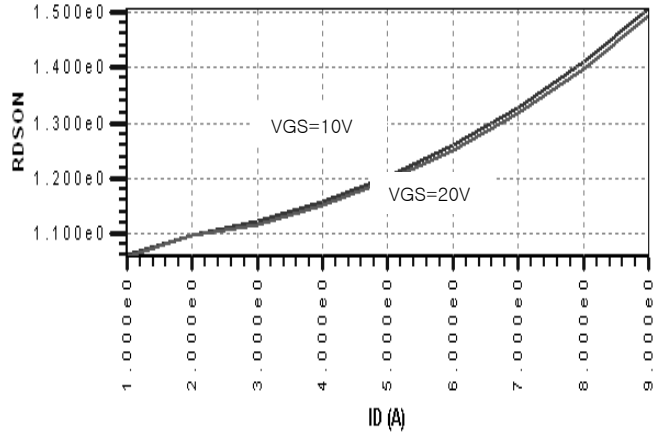


Fig. 3. Gate charge characteristics

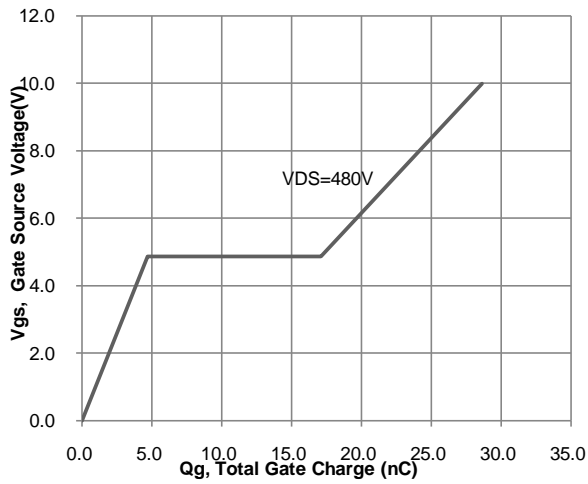


Fig. 4. On state current vs. diode forward voltage

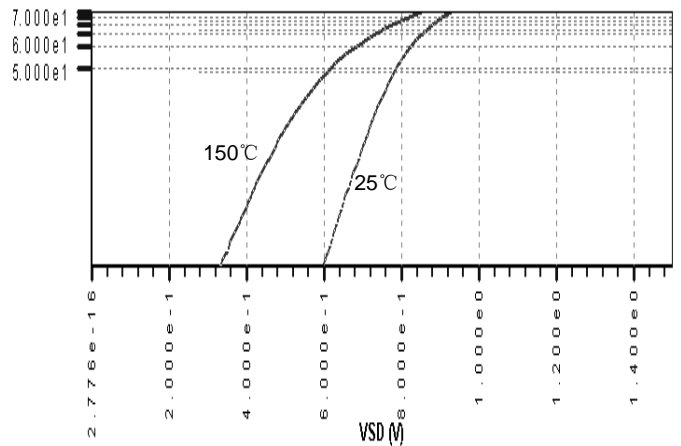


Fig 5. Breakdown Voltage Variation vs. Junction Temperature

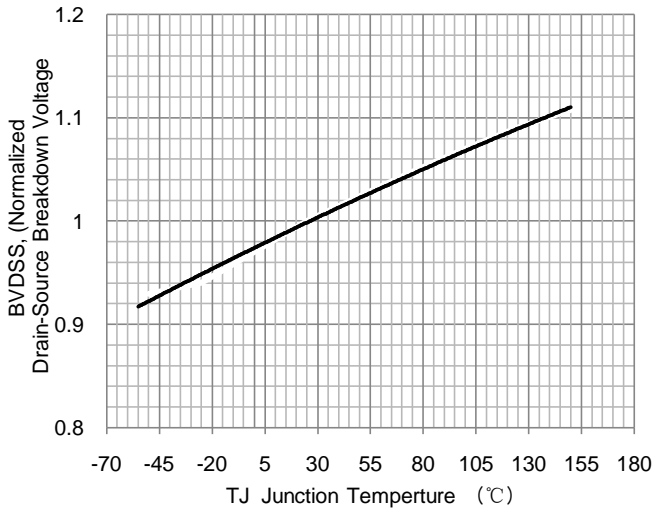


Fig. 6. On resistance variation vs. junction temperature

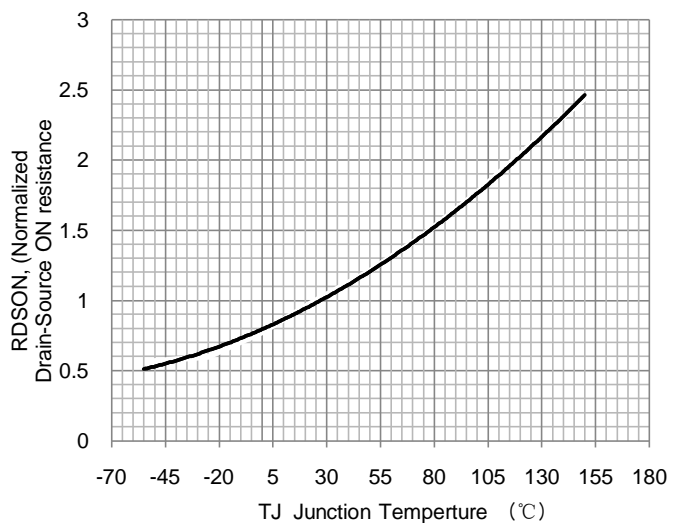


Fig. 7. Maximum safe operating area

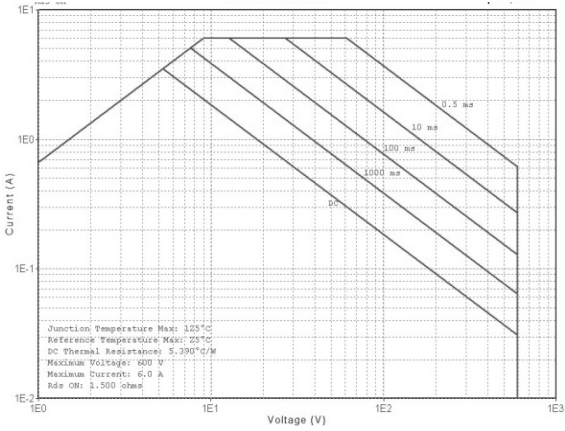


Fig. 8. Transient thermal response curve

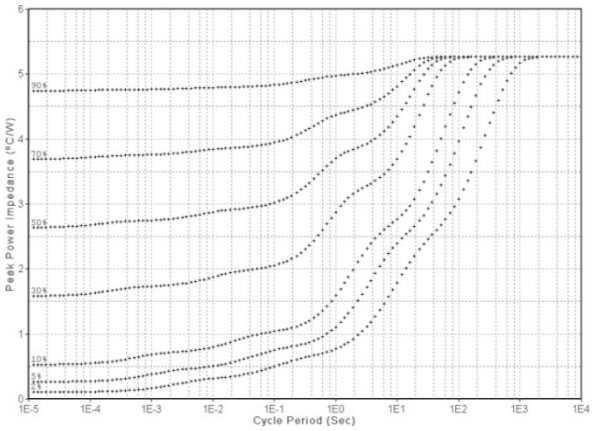


Fig. 9. Gate charge test circuit & waveform

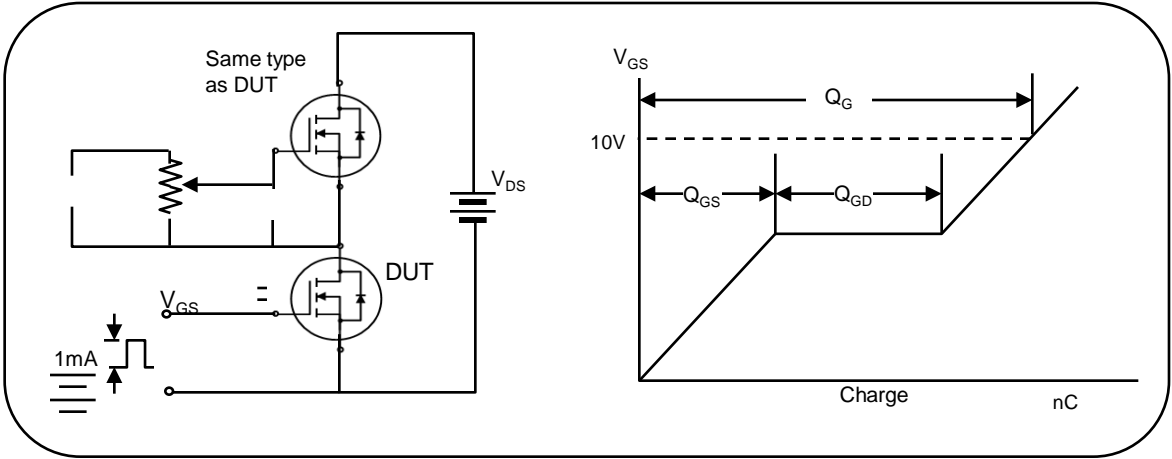


Fig. 10. Switching time test circuit & waveform

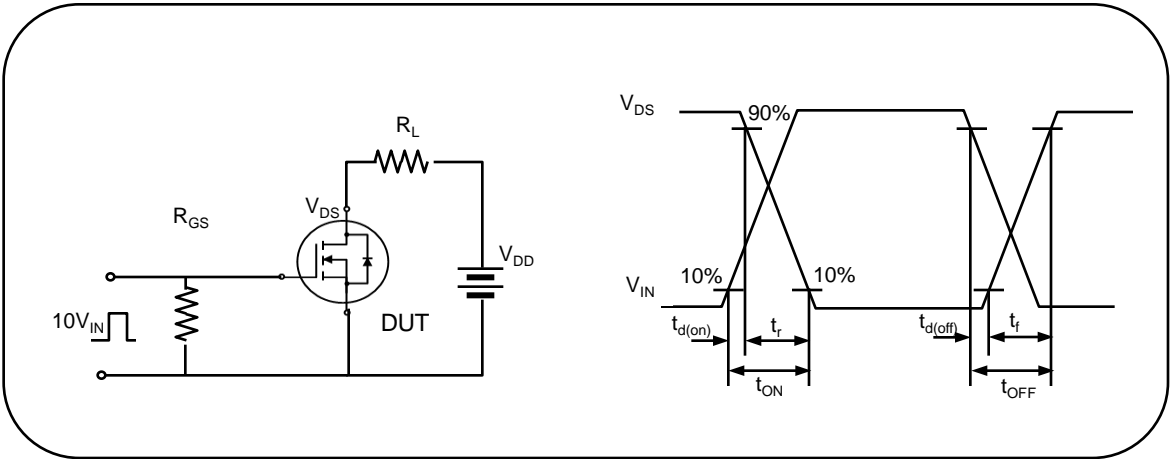


Fig. 11. Unclamped Inductive switching test circuit & waveform

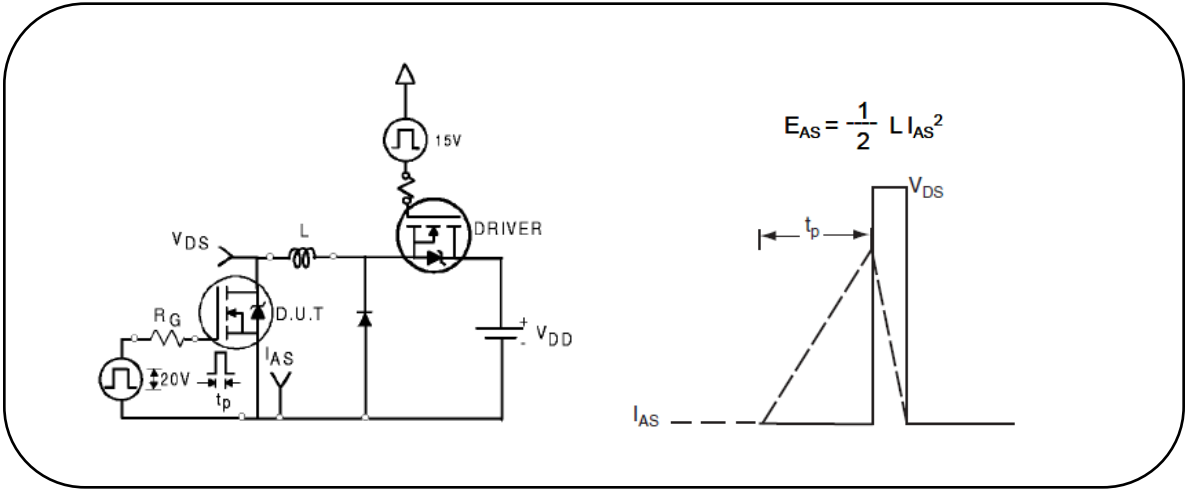


Fig. 12. Peak diode recovery dv/dt test circuit & waveform

