



Solid State Devices, Inc.

14701 Firestone Blvd * La Mirada, Ca 90638
 Phone: (562) 404-4474 * Fax: (562) 404-1773
 ssdi@ssdi-power.com * www.ssdi-power.com

Designer's Data Sheet

Part Number/Ordering Information ^{1/}

SPR2

Screening ^{2/}

— = Not Screened

TX = TX Level

TXV = TXV

S = S Level

Package Type

— = Axial

SMS = Surface Mount Square Tab

Reverse Recovery

F = Fast Recovery

Device Type (VRWM)

K = 800V

M = 1000V

N = 1200V

SPR2KF thru SPR2NF

REVERSE TRANSIENT RATED

2 Amp
FAST RECTIFIER
800-1200 Volts
200 nsec

FEATURES:

- Fast Reverse Recovery Time: 200 nsec Max
- PIV to 1200 Volts
- Reverse Transient Rated: 1 Amp (Typ 1200 Wpk)
- Hermetically Sealed
- For High Efficiency Applications
- Available in Axial and Surface Mount Versions
- Metallurgically Bonded
- Solid Silver Leads for High Thermal Conductivity
- TX, TXV, and S-Level Screening Available^{2/}

MAXIMUM RATINGS ^{3/}

RATING	SYMBOL	VALUE	UNIT
Peak Repetitive Reverse Voltage	SPR2K SPR2M SPR2N	V_{RRM} V_{RWM} V_R	800 1000 1200
DC Blocking Voltage			Volts
Average Rectified Forward Current (Resistive Load, 60 Hz, Sine Wave, $T_c = 25^\circ\text{C}$)		I_o	2
			Amps
Peak Surge Current (8.3ms pulse, half sine wave superimposed on I_o , allow junction to reach equilibrium between pulses, $T_A = 25^\circ\text{C}$)		I_{FSM}	75
			Amps
Operating & Storage Temperature		T_{OP} and T_{STG}	-65 to +175
			$^\circ\text{C}$
Maximum Thermal Resistance	Junction to Leads, $L=3/8"$ (Axial) Junction to End Tab (SMS)	$R_{\theta JL}$ $R_{\theta JE}$	38 7.0
			$^\circ\text{C/W}$

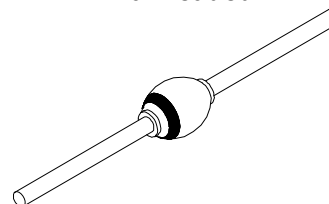
NOTES:

^{1/} For Ordering Information, Price, and Availability- Contact Factory.

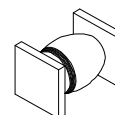
^{2/} Screening Based on MIL-PRF-19500. Screening Flows Available on Request.

^{3/} Unless Otherwise Specified, All Electrical Characteristics @25°C.

Axial Ledged



SMS



NOTE: All specifications are subject to change without notification.
 SCD's for these devices should be reviewed by SSDI prior to release.

DATA SHEET #: RC0134A

DOC

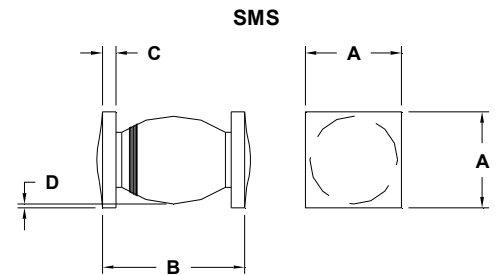
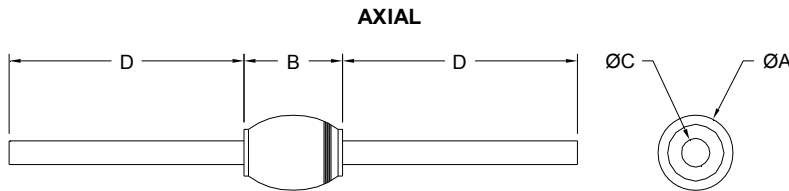


Solid State Devices, Inc.

14701 Firestone Blvd * La Mirada, Ca 90638
Phone: (562) 404-4474 * Fax: (562) 404-1773
ssdi@ssdi-power.com * www.ssdi-power.com

SPR2KF thru SPR2NF

CHARACTERISTICS	SYMBOL	MAX	UNIT
Instantaneous Forward Voltage Drop ($T_A = 25^\circ\text{C}$, 300 μs Pulse)	$I_F = 0.75\text{A}$ $I_F = 2\text{A}$ V_F	1.25 1.55	Vdc
Reverse Leakage Current ($V_R = 800\text{V}$, 300 μs Pulse Minimum, $T_A = 25^\circ\text{C}$)	I_R	2	μA
Maximum Reverse Leakage Current ($V_R = 800\text{V}$, 300 μs Pulse Minimum, $T_A = 125^\circ\text{C}$)	I_R	50	μA
Junction Capacitance ($T_A = 25^\circ\text{C}$, $f = 1\text{MHz}$, $V_R = 10\text{V}$)	C_J	20	pf
Reverse Recovery Time ($I_F = 500\text{mA}$, $I_R = 1\text{A}$, $I_{RR} = 250\text{mA}$, $T_A = 25^\circ\text{C}$)	t_{rr}	200	nsec
Reverse Energy Test (Half sine wave, $t_p = 600\text{ns}$ @ 50% of I_P)	I_{PK}	1 (Minimum)	A



DIM	MIN	MAX	MIN	MAX
A	---	.140"	.140"	.150"
B	---	.180"	.190"	.230"
C	---	.030"	.019"	.028"
D	.97"	---	.003"	---

NOTE: All specifications are subject to change without notification.
SCD's for these devices should be reviewed by SSDI prior to release.

DATA SHEET #: RC0134A

DOC