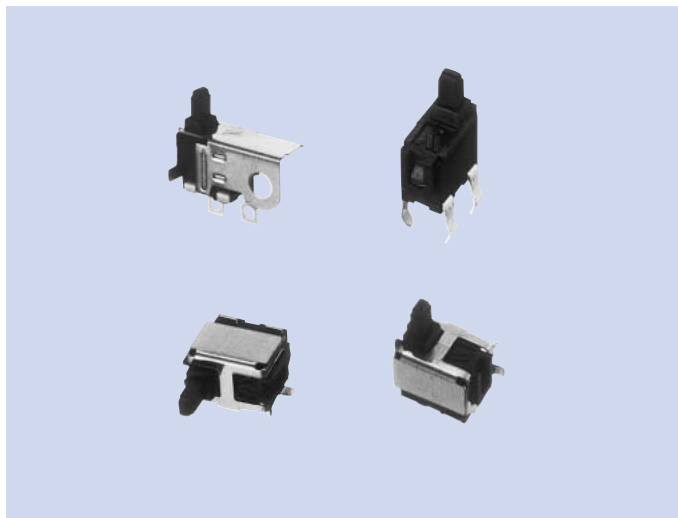


# Vertical Type Detector Switches SIV Series

Switches

## FEATURES

1. The special contact point structure, using a pair of coil springs, allows high precision detection of even light movements, and offers superior durability.
2. There is a selection of terminals that support reflow, dip and lead wire, and models with different mounting and operating directions are available.
3. The reflow solder type is supplied on taping.



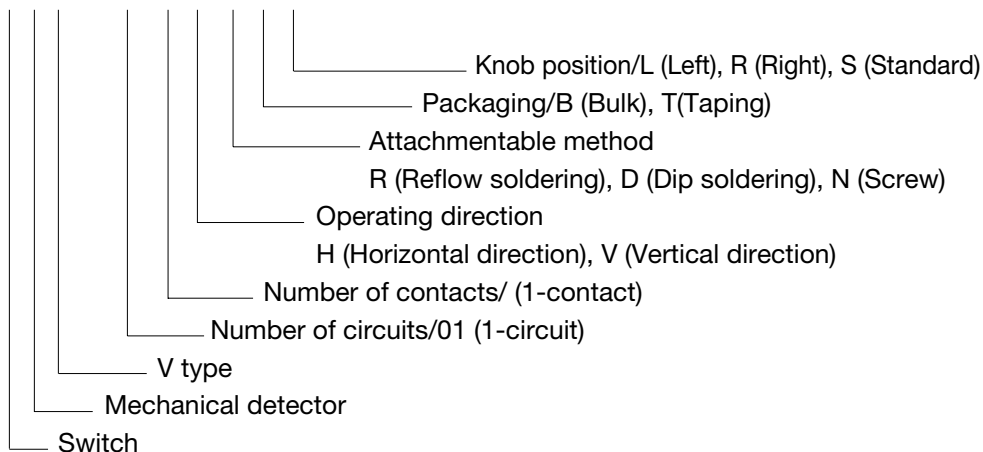
## USES

1. Used for operation detection on VCR's, cassette mechanisms, CD-ROM drives, FDD and other deck mechanisms.
2. Detects and identifies type of media inserted.
3. Detects movement and position of shutters, lids, knobs and other mechanical parts.

[www.DataSheet4U.com](http://www.DataSheet4U.com)

## MODEL NAME CODE

**SIV-011HRTL**



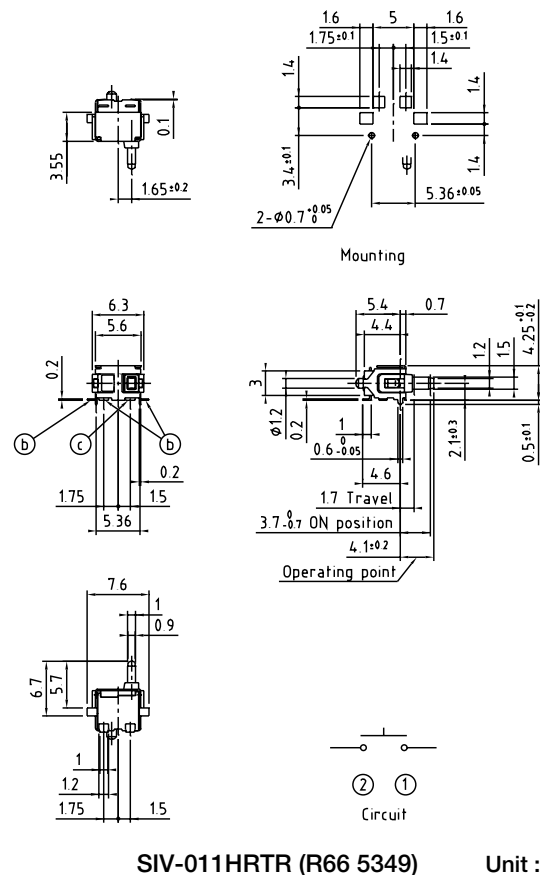
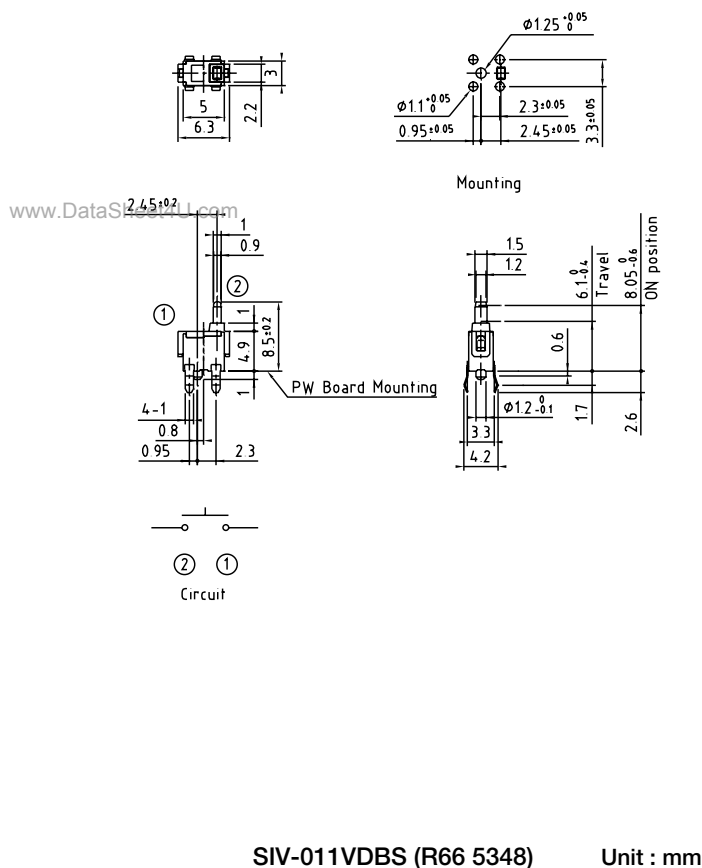
## TYPE

Model Name Code	Order Number	Attachmentable Method	Pcs/Package
SIV-011VDBS	R66 5348	Dip Soldering	Bulk 10,000Pcs/Parcel
SIV-011HRTR	R66 5349	SMT, Reflow Soldering	Taping 1,500Pcs/reel
SIV-011HRTL	R66 5350	SMT, Reflow Soldering	Taping 1,500Pcs/reel
SIV-011HDBR	R66 5351	Dip Soldering	Bulk 10,000Pcs/Parcel
SIV-011HDBL	R66 5352	Dip Soldering	Bulk 10,000Pcs/Parcel
SIV-011HNBR	R66 5353	Terminal	Bulk 10,000Pcs/Parcel
SIV-011HNBL	R66 5354	Terminal	Bulk 10,000Pcs/Parcel

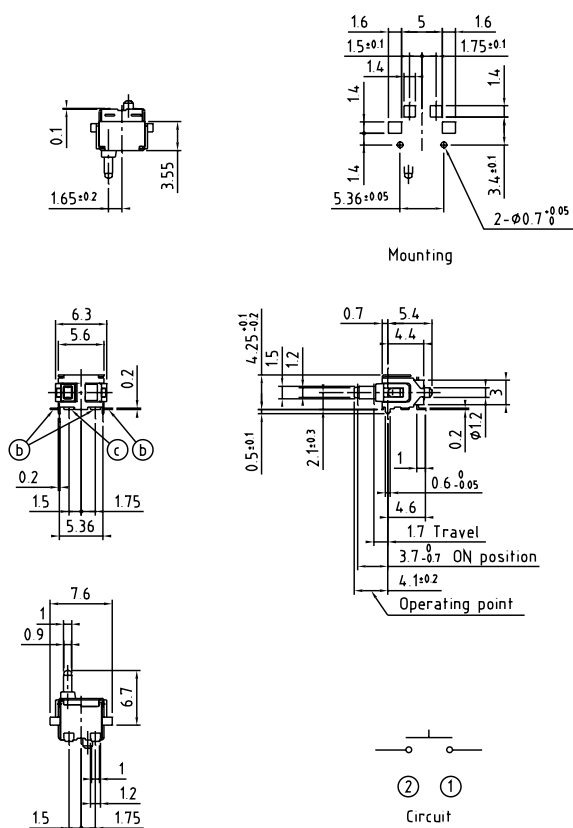
## SPECIFICATIONS

Electrical Characteristics	Rating	0.1mA, 5V DC
	Contact Resistance	1Ω or less
	Insulation Resistance	100MΩ or more
	Withstand Voltage	1 minute at 100V AC
Mechanical Characteristics	Operating Force	0.35N (35.6gf) or less
	Life	50,000 cycles

## DIMENSIONS

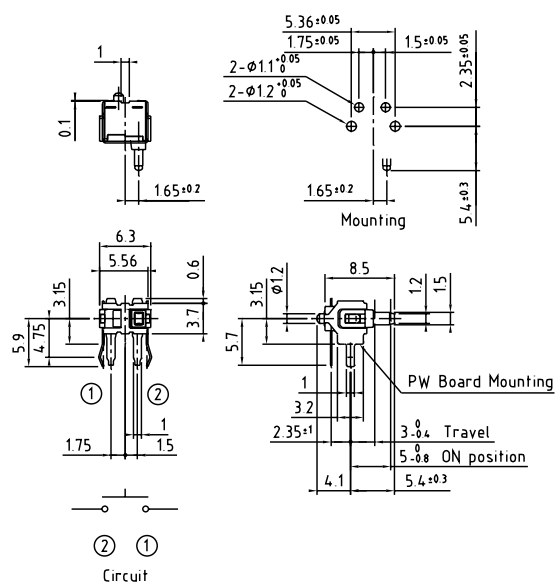


# DIMENSIONS



SIV-011HRTL (R66 5350)

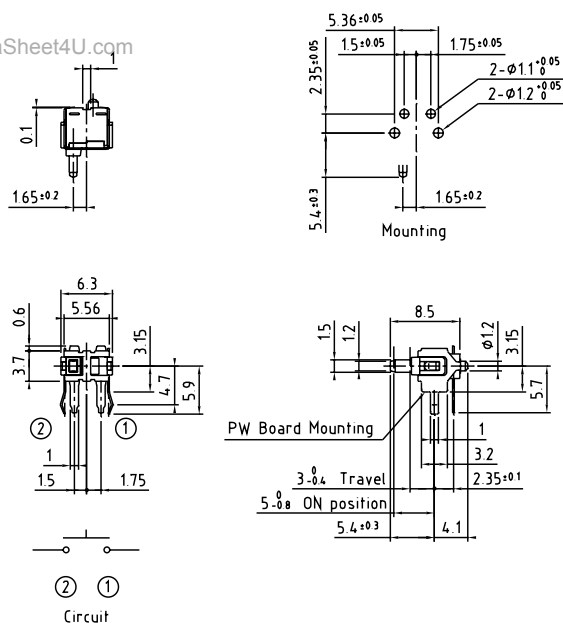
Unit : mm



SIV-011HDBR (R66 5351)

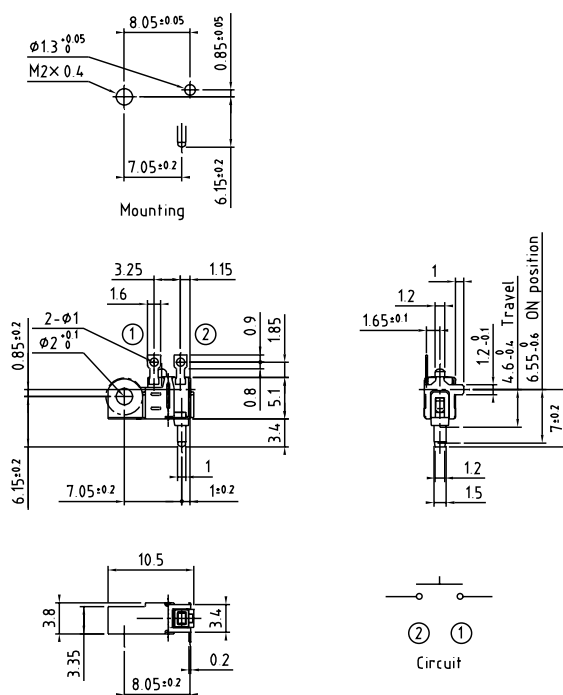
Unit : mm

www.DataSheet4U.com



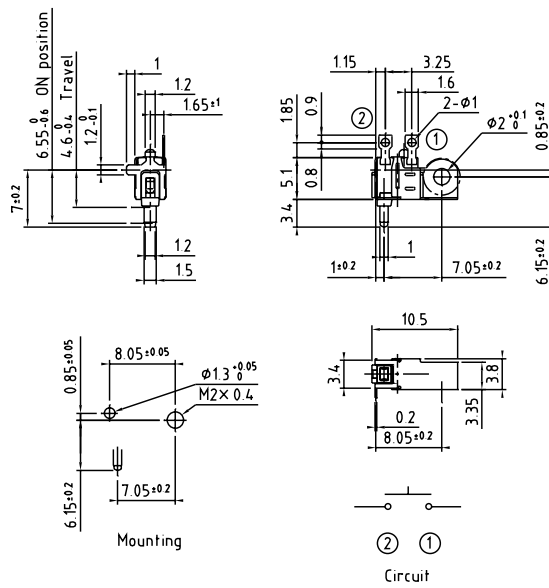
SIV-011HDBL (R66 5352)

Unit : mm



SIV-011HNBR (R66 5353)

Unit : mm



SIV-011HNBL (R66 5354)

Unit : mm