

# SD103AW...SD103CW

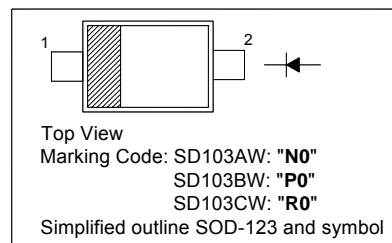
## SURFACE MOUNT SCHOTTKY BARRIER DIODE

### Features

- Low Forward Voltage

### PINNING

PIN	DESCRIPTION
1	Cathode
2	Anode

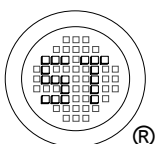


### Absolute Maximum Ratings ( $T_a = 25^\circ\text{C}$ )

Parameter	Symbol	Value	Unit
Peak Repetitive Reverse Voltage	$V_{RRM}$	40 30 20	V
Average Forward Rectified Current	$I_{F(AV)}$	350	mA
Non-Repetitive Peak Forward Surge Current at $t \leq 1$ s	$I_{FSM}$	2	A
Power Dissipation	$P_{tot}$	400	mW
Operating and Storage Temperature Range	$T_j, T_s$	- 65 to + 125	$^\circ\text{C}$

### Characteristics at $T_a = 25^\circ\text{C}$

Parameter	Symbol	Min.	Typ.	Max.	Unit
Reverse Breakdown Voltage at $I_R = 10 \mu\text{A}$	$V_{(BR)R}$	40 30 20	- - -	- - -	V
Reverse Leakage Current at $V_R = 30$ V at $V_R = 20$ V at $V_R = 10$ V	$I_R$	- - -	- - -	5 5 5	$\mu\text{A}$
Forward Voltage at $I_F = 20$ mA at $I_F = 200$ mA	$V_F$	- -	- -	0.37 0.6	V
Total Capacitance at $V_R = 0$ V, $f = 1$ MHz	$C_T$	-	50	-	pF
Reverse Recovery Time at $I_F = I_R = 50$ mA to 200 mA, Recover to $0.1 I_R$	$t_{rr}$	-	10	-	ns



**SEMTECH ELECTRONICS LTD.**

(Subsidiary of Sino-Tech International Holdings Limited, a company  
listed on the Hong Kong Stock Exchange, Stock Code: 724)



ISO/TS 16949 : 2002  
Certificate No. 05103



ISO 14001:2004  
Certificate No. 7116



ISO 9001:2000  
Certificate No. 0506098

Dated : 17/11/2006

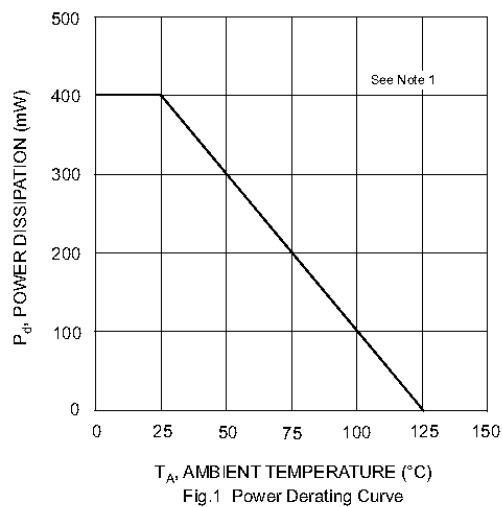


Fig. 1 Power Derating Curve

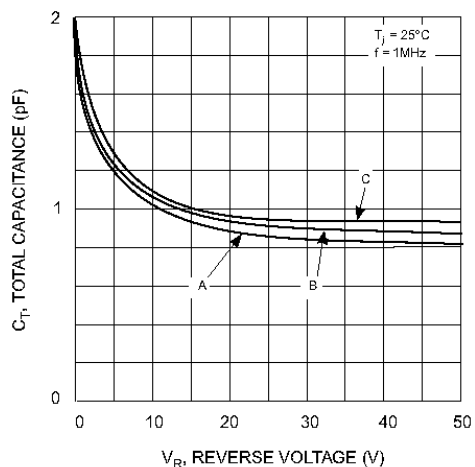


Fig. 3 Typical Total Capacitance vs Reverse Voltage

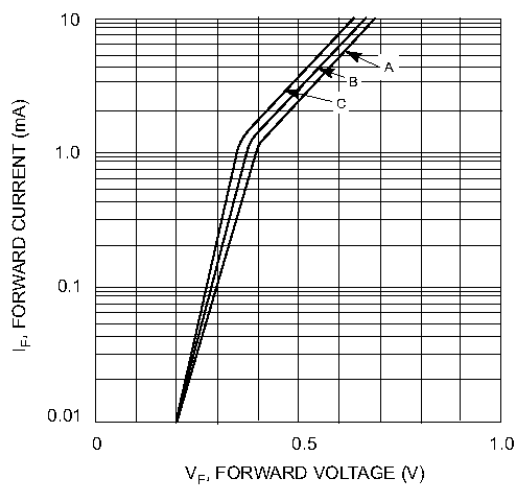


Fig. 2 Typical Forward Characteristic

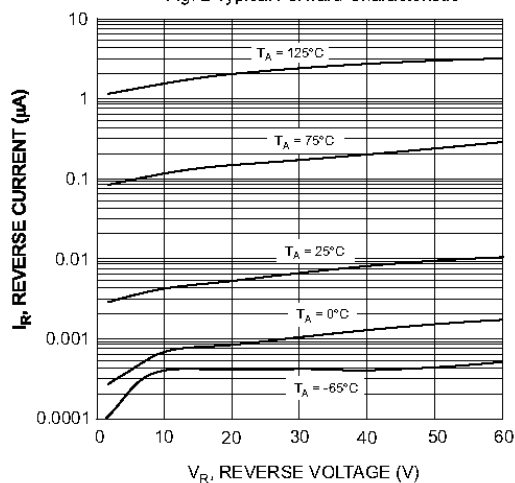
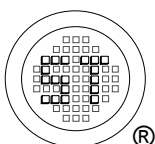


Fig. 4 Typical Reverse Characteristics



**SEMTECH ELECTRONICS LTD.**

(Subsidiary of Sino-Tech International Holdings Limited, a company listed on the Hong Kong Stock Exchange, Stock Code: 724)



ISO/TS 16949 : 2002  
Certificate No. 05103



ISO 14001:2004  
Certificate No. 7116



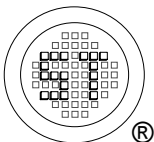
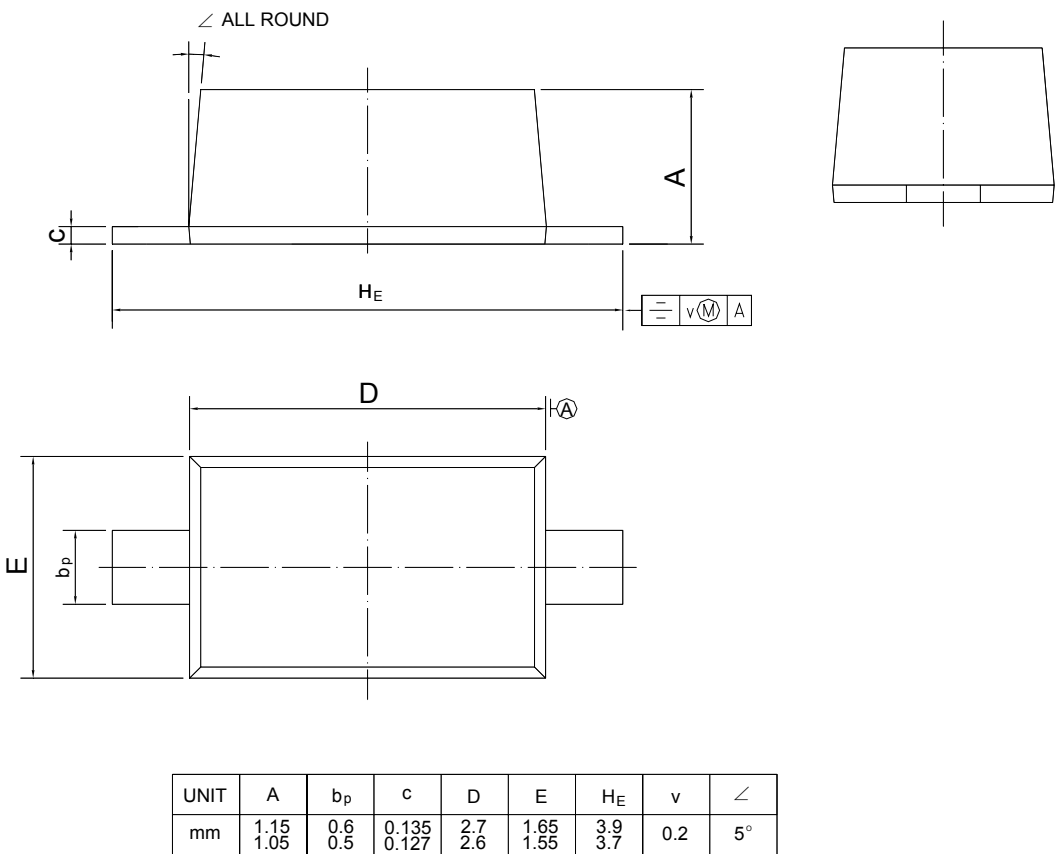
ISO 9001:2000  
Certificate No. 0506098

Dated : 17/11/2006

PACKAGE OUTLINE

Plastic surface mounted package; 2 leads

SOD-123



**SEMTECH ELECTRONICS LTD.**  
(Subsidiary of Sino-Tech International Holdings Limited, a company  
listed on the Hong Kong Stock Exchange, Stock Code: 724)

