

## SCDS Series



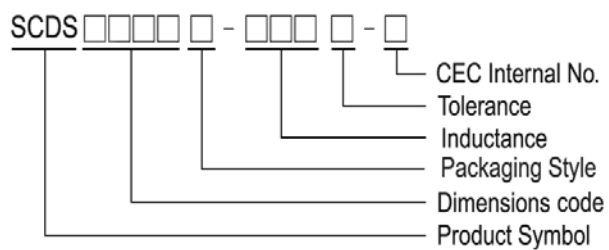
### Features

- RoHS compliant
- Available in magnetic shielding
- Low DC resistance
- Suitable for large currents
- Ideal for a variety of DC – DC converter inductor applications
- Available on tape and reel for auto surface mounting

### Applications

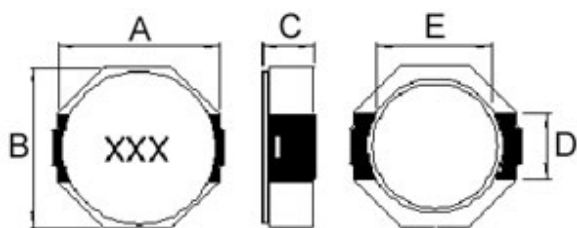
- Power supply for VTRs
- OA equipment
- LCD televisions
- Notebook PCs
- Portable communication devices
- DC / DC converters, etc

### Product Identification

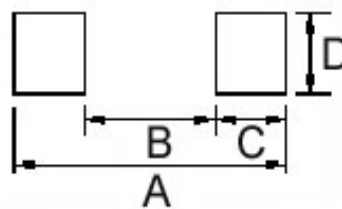


- T : Packaging: Tape and Reel

### Shapes and Dimensions



### Recommended Pattern



Dimension in mm

TYPE	A	B	C	D	E
SCDS8D43	8.3 <sup>+0</sup>	8.3 <sup>+0</sup>	4.5 <sup>+0</sup>	2.5	6.3

Dimension in mm

TYPE	A	B	C	D
SCDS8D43	10.1	6.1	2.0	2.8

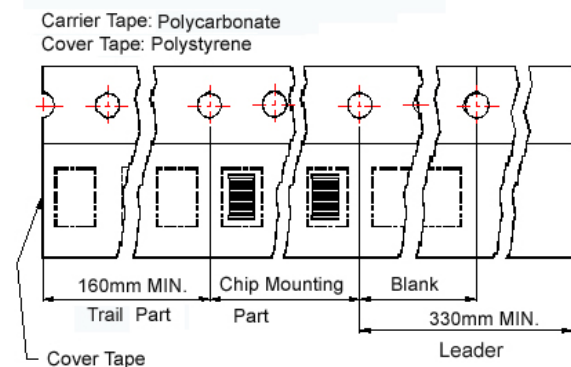
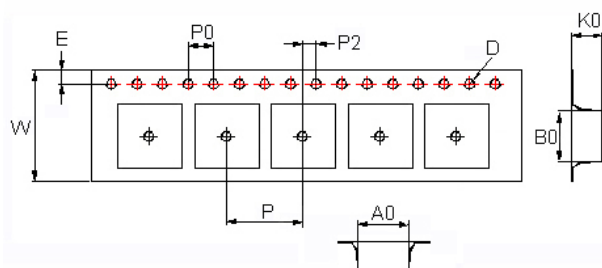
## Electrical Characteristics

Part Number	Inductance ( $\mu$ H)	Tolerance ( $\pm\%$ )	DC Resistance (m $\Omega$ ) Max	Rated Current (A)
SCDS8D43T-3R3□-N	3.3	30	19	5.7
SCDS8D43T-100□-N	10	30	36	4.0
SCDS8D43T-220□-N	22	30	75	2.4
SCDS8D43T-470□-N	47	30	150	1.8
SCDS8D43T-680□-N	68	30	240	1.5

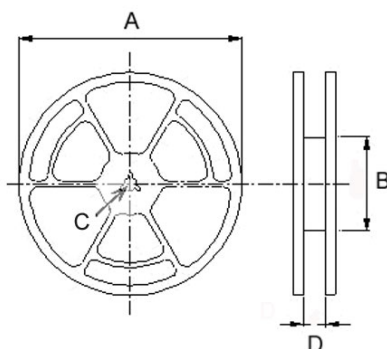
- When ordering, please specify tolerance and packaging codes.
- Inductance range : 3.3uH to 68uH.
- Inductance tested at 100KHz./1V
- Tolerance: M =  $\pm 20\%$
- Rated current : The rate current indicates the current when the inductance decreases to 65% over of it's nominal value or D.C.current when the temperature rising  $\Delta T=30^{\circ}\text{C}$  lower, whichever is lower.
- Test Instrument: L : HP4284A.  
RDC : CHEN HWA 502BC  
Rated current : HP4284+42841A

## Packaging Specifications

### Tape Dimensions



### Reel Dimensions



### Dimensions in mm

TYPE	Tape Dimensions									Reel Dimensions				Quantity PCS / REEL
	A0	B0	K0	D	E	W	P	P0	P2	A	B	C	D	
SCDS 8D43	8.4	9.9	4.8	1.55	1.75	24	12	4	2	330	100	13	24.4	1000