

Product Features

- High Output Power
P1dB = 40dBm(typ)@2.3GHz
- High Efficiency
- High Power Gain
G1dB = 10dB(typ) @2.3GHz
- High Linearity
- Hermetically sealed package
- Competitive Price

Application

- Repeater
- RF Sub-Systems
- Base Station
- Converter
- MMDS



Package Type : WP-22

Description

The RT550PD is designed for base stations and cell extenders as 300MHz ~ 3GHz.

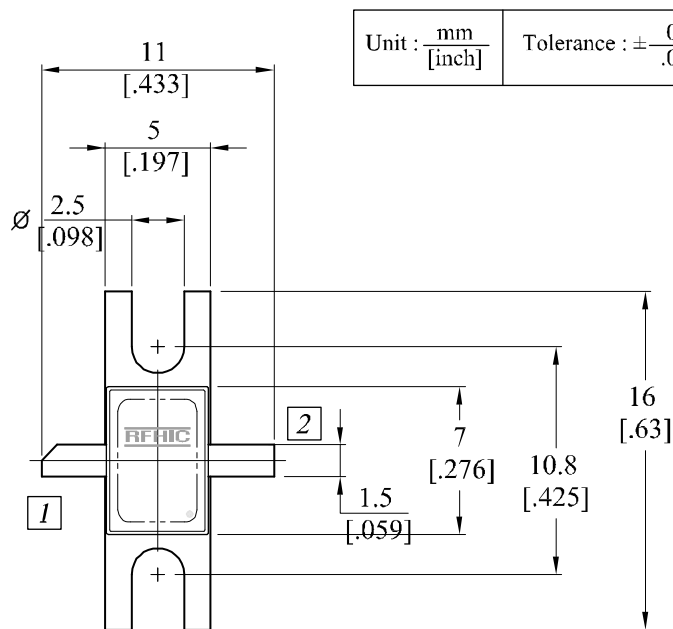
Absolute Maximum Ratings

Parameter	Symbol	Rating	Unit
Drain - Source Voltage	Vds	+12	V
Gate - Source Voltage	Vgs	-5V~0V	V
Total Power Dissipation	Pt	37	W
Storage Temperature	Tstg	-65 ~ +200	°C
Channel Temperature	Tch	175	°C

Electrical Characteristics (Ta=+25°C)

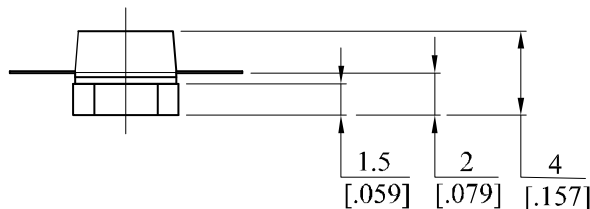
Parameter	Symbol	Test Conditions	Min	Typ	Max	Unit
Saturated Drain Current	Idss	Vds=3V, Vgs=0V	5000		6700	mA
Transconductance	gm	Vds=3V, Ids=3600mA		3300		mS
Pinch-off Voltage	Vp	Vds=3v, Ids=360mA	-1.6	-1.9	-3.5	V
Breakdown Voltage Gate-Source	Bvgs		-20		-25	V
Breakdown Voltage Gate-Drain	Bvgd		-20		-25	V
Output Power @ 1dB G.C.P	P1dB	Vds=9V, Id=2.4A F=2.3GHz	39	40		dBm
Linear Power Gain	GLP			10		dB
Power added efficiency @ 1dB	η_{add}			40		%
Thermal Resistance (Channel to Case)	Rth			4.0	4.5	°C/W

Type:WP-22



Pin Map

Pin1	Pin2
Gate	Drain



RFHIC Corporation (RFHIC) reserves the right to make changes to any products herein or to discontinue any product at any time without notice. RFHIC do not assume any liability for the suitability of its products for any particular purpose, and disclaims any and all liability, including without limitation consequential or incidental damages. The product specifications herein expressed have been carefully checked and are assumed to be reliable. However, RFHIC disclaims liability for inaccuracies and strongly recommends buyers to verify that the information they are using is current before placing purchase orders. RFHIC products are not intended for use in life support equipment or application where malfunction of the product can be expected to result in personal injury or death. Buyer uses or sells such products for any such unintended or unauthorized application, buyer shall indemnify, protect and hold RFHIC and its directors, officers, stockholders, employees, representatives and distributors harmless against any and all claims arising out of such use. RFHIC's liability under or arising out of damages, claims of whatsoever kind and nature which RFHIC products could cause shall be limited in amount to the net purchase price of the products sold to buyer by RFHIC.