

Pyrodetectors

For Gas Monitoring And Measuring

PYS 3228, PYS 3428 – Dual-Channel Pyros

Applications

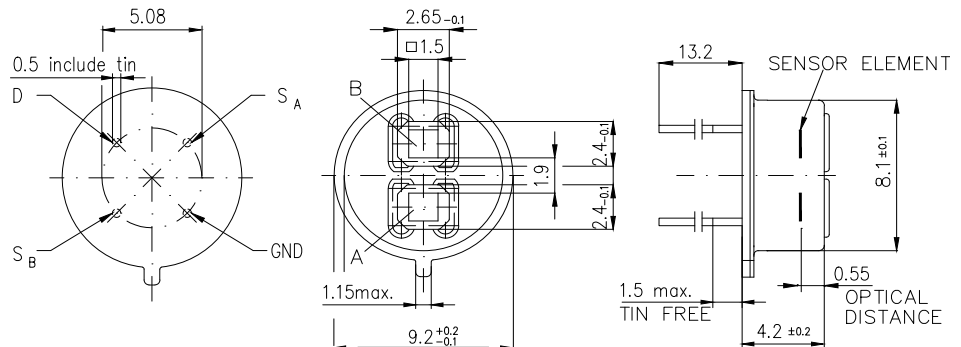
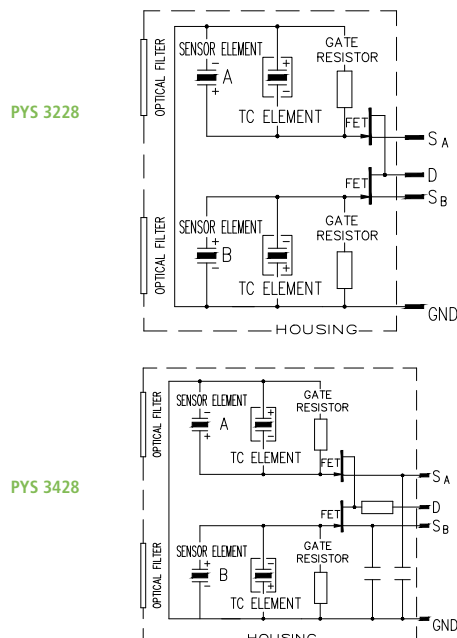
- Gas Sensing and Monitoring

Features and Benefits

- TO-5 metal housing
- Dual Channel Output
- Each Channel with individual Filter Window
- Selection of narrow band pass filters
- Thermal Compensation option

Product Description

As the successor to the LHi 814 series, the PYS 3x28 Dual-Channel detectors have become standard for gas sensing applications, with two, individual 1.5 x 1.5 elements, and with additional temperature compensation. They are available with a range of narrow band pass filters, as specified on page 4, in combination with a reference filter. The same features are included with the PYS 3428, which offers additional EMI protection by internal capacitors.



PYS 3228 and PYS 3428

Parameter	Symbol	PYS 3228	PYS 3428	Unit	Remarks
Operation Voltage	V_{DD}	2-12	2-12	V	
Responsivity, min.	R_{min}	2.2	3.5	kV/W	$f = 1 \text{ Hz}$
Responsivity, typ.	R	3.5	5.0	kV/W	$f = 1 \text{ Hz}$
Match, max.	M_{max}	-	-	%	
Noise, max.	N_{max}	50	50	μV_{pp}	0,4...10Hz/20°C
Noise, typ.	N	15	20	μV_{pp}	0,4...10Hz/20°C
spec. Detectivity	D^*			107cm $\cdot\sqrt{\text{Hz/W}}$	1Hz/ 1Hz BW
Field of View, horizontal	FoV	77	77		unobstructed
Field of View, vertical					unobstructed
Source Voltage			0,2...1,5	V	47 KO, 20°C
EMI Performance			***		
Height	h		4.2	mm	
Optical Element Location	he / ho	/ 0,55	/ 0,55	mm	
Filter Size	X/Y	2,65 / 2,4	2,65 / 2,4	mm	