

Front Panel Adapter for LED Lamp

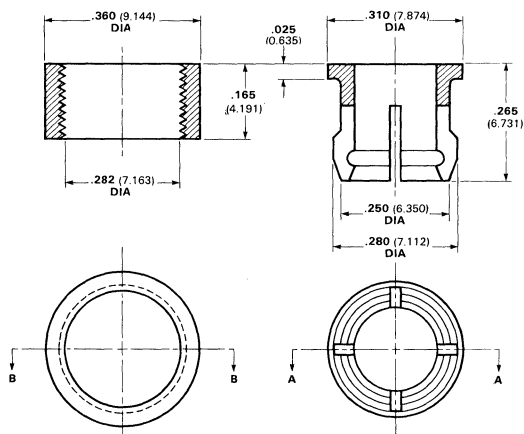
Optoelectronic Products

MP52

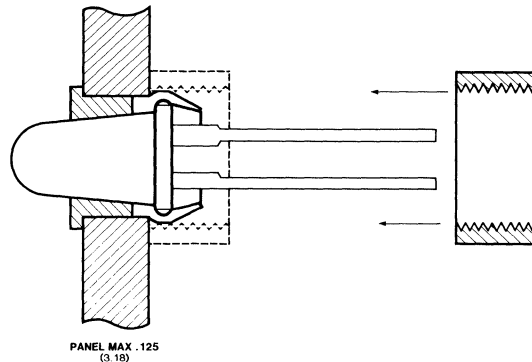
General Description

The MP52 is a two-piece black plastic adapter for panel mounting many standard MV series LED indicator lamps. This adapter will easily mount the applicable lamps on any panel thickness up to .125-inch (3.18 mm).

Dimensional Data



Typical Mounting Technique



Note

All dimensions in inches **bold** and millimeters (parentheses)
Tolerance unless specified = $\pm .015$ ($\pm .381$)

