

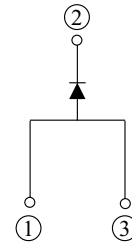
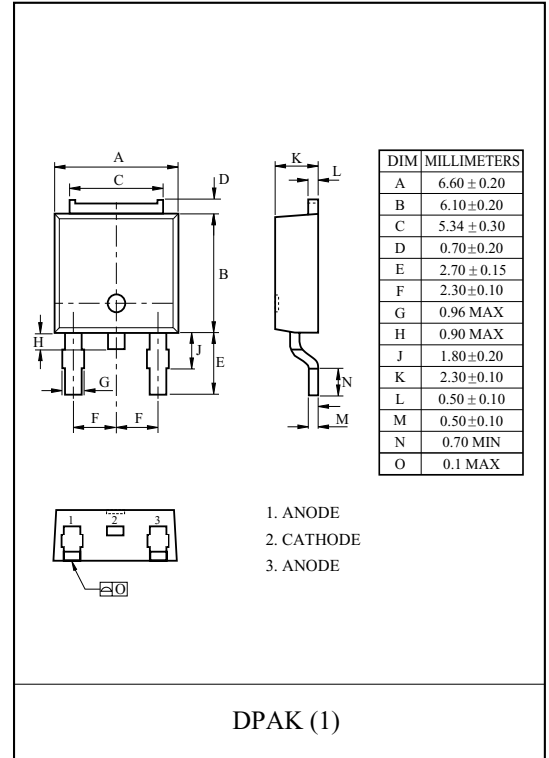
SWITCHING MODE POWER SUPPLY APPLICATION.  
CONVERTER & CHOPPER APPLICATION.

### FEATURES

- Average Output Rectified Current  
:  $I_O=5A$ .
- Repetitive Peak Reverse Voltage  
:  $V_{RRM}=100V$ .

### MAXIMUM RATING (Ta=25 )

CHARACTERISTIC	SYMBOL	RATING	UNIT
Repetitive Peak Reverse Voltage	$V_{RRM}$	100	V
Average Output Rectified Current (Tc=114 )	$I_O$	5	A
Peak One Cycle Surge Forward Current (Non-Repetitive 60Hz)	$I_{FSM}$	90	A
Junction Temperature	$T_j$	-40 150	
Storage Temperature Range	$T_{stg}$	-55 150	

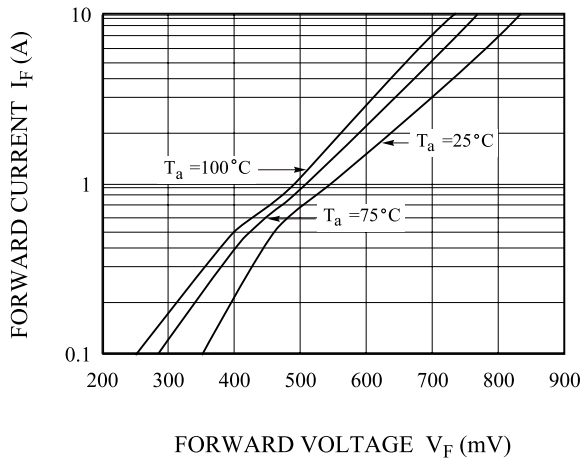


### ELECTRICAL CHARACTERISTICS (Ta=25 )

CHARACTERISTIC	SYMBOL	TEST CONDITION	MIN.	TYP.	MAX.	UNIT
Peak Forward Voltage	$V_{FM}$	$I_{FM}=5A$	-	-	0.8	V
Repetitive Peak Reverse Current	$I_{RRM}$	$V_{RRM}=100V$	-	-	50	$\mu A$
Thermal Resistance	$R_{th(j-c)}$	Juction to Case	-	-	5	/W

# MBRD5U100D

$I_F - V_F$



$I_R - V_R$

