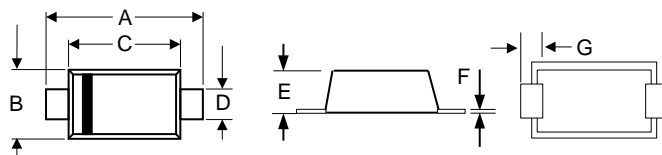


Features

- * Very low forward voltage
- * High Current Capability
- * Marking Code: SC



RoHS
COMPLIANT



SOD-123F				
DIM	INCHES		MM	
	MIN	MAX	MIN	MAX
A	0.138	0.154	3.50	3.90
B	0.067	0.075	1.70	1.90
C	0.102	0.114	2.60	2.90
D	0.031	0.043	0.80	1.10
E	0.035	0.043	0.88	1.08
F	0.004	0.008	0.10	0.20
G	0.028	0.035	0.70	0.90

Maximum Ratings (T_A=25°C unless otherwise noted)

Parameter	Symbol	Value	Unit
Peak Reverse Voltage	V _{RRM}	20	V
Working Peak Reverse Voltage	V _{RWM}	20	V
DC Reverse Voltage	V _R	20	V
Average Rectified Forward Current	I _{F(AV)}	0.5	A
Peak Forward Surge Current (8.3 ms Single Half Sine-wave)	I _{FSM}	5.5	A
Thermal Resistance Junction to Ambient	R _{θJA}	340	°C/W
Thermal Resistance Junction to Lead	R _{θJL}	150	°C/W
Junction Temperature	T _j	- 65 to + 150	°C
Storage Temperature	T _{stg}	- 65 to + 150	°C

Note: 1) Following any rated load condition and with rated V_{RRM} applied.

Electrical Characteristics (T_A=25°C unless otherwise noted)

Parameter	Symbol	Max.	Unit
Forward Voltage at I _F = 0.1 A, T _j = 25°C at I _F = 0.5 A, T _j = 25°C at I _F = 0.1 A, T _j = 100°C at I _F = 0.5 A, T _j = 100°C	V _F	0.375 0.44 0.26 0.36	V
Reverse Current at V _R = 10 V, T _j = 25°C at V _R = 20 V, T _j = 25°C at V _R = 10 V, T _j = 100°C at V _R = 20 V, T _j = 100°C	I _R	40 150 3 7	μA μA mA mA
Total Capacitance at V _R = 5 V (test signal range 100 KHz to 1 MHz), T _j = 25°C	C _{tot}	110	pF

Ratings and Characteristic Curves

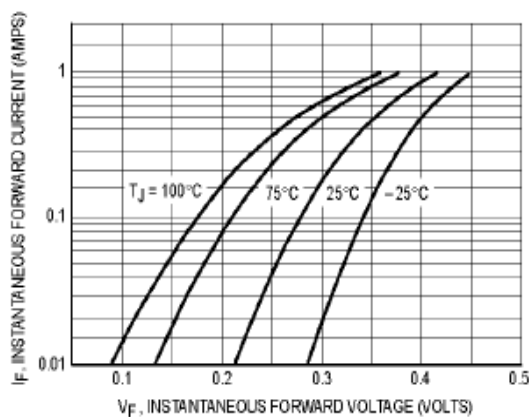


Figure 1. Typical Forward Voltage

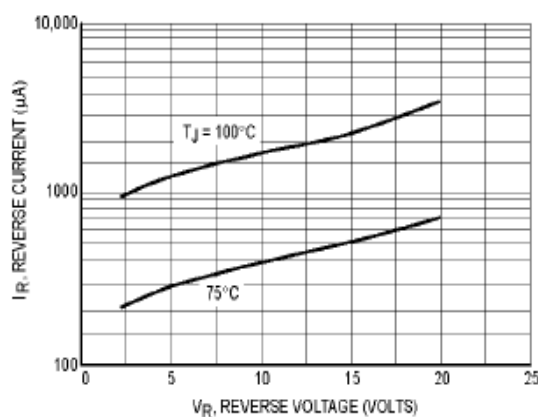


Figure 2. Typical Reverse Current

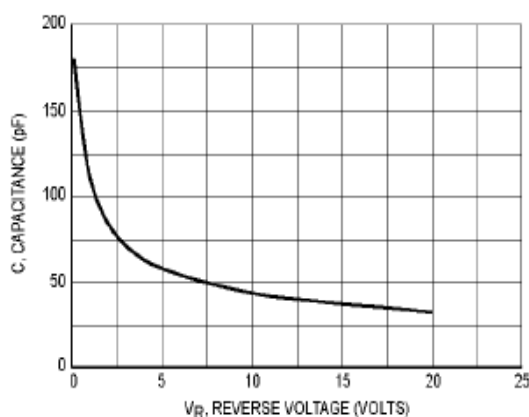


Figure 3. Typical Capacitance

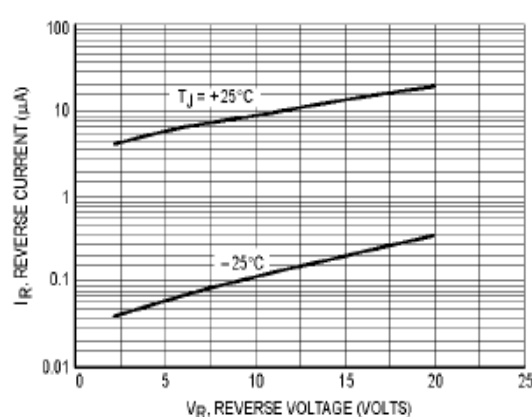


Figure 4. Typical Reverse Current



MBR0520W

Surface Mount Schottky Barrier Diode

Ordering Information

Part No.	Package	Packing Code	Packing
MBR0520W	SOD-123F	R30	3000pcs/Reel

Disclaimer

Specifications of the products displayed herein are subject to change without notice. JGD or anyone on its behalf, assumes no responsibility or liability for any errors or inaccuracies.

Information contained herein is intended to provide a product description only. No license, express or implied, to any intellectual property rights is granted by this document. Except as provided in JGD's terms and conditions of sale for such products, JGD assumes no liability whatsoever, and disclaims any express or implied warranty, relating to sale and/or use of JGD products including liability or warranties relating to fitness for a particular purpose, merchantability, or infringement of any patent, copyright, or other intellectual property right.

The products shown herein are not designed for use in medical, life-saving, or life-sustaining applications. Customers using or selling these products for use in such applications do so at their own risk and agree to fully indemnify JGD for any damages resulting from such improper use or sale.