

# SPDT Non Reflective Miniature Switch with TTL Compatible Driver, 0.5 to 18.0 GHz

**V 1.00**

**MASWML0010**

## Features

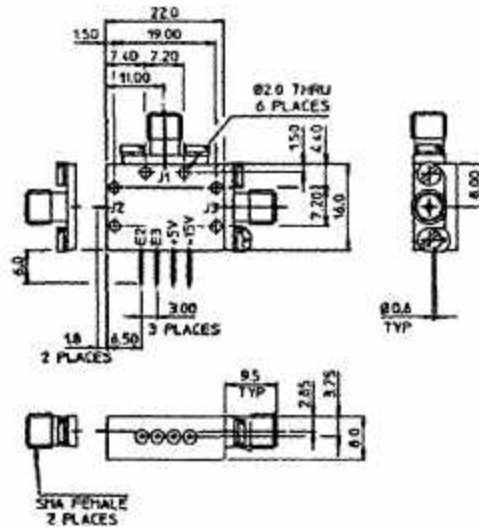
- Broad Band Frequency
- Miniature Outline
- Field Removable Connectors
- Hermetically Sealed Housing
- Fast Switching
- TTL Compatible

## Other Mechanical

It has 3 field replaceable SMA female connected for RF in/out connections. DC connections and TTL controls are supplied through solder pins. This device is supplied with silver finish.

## Description

This SPDT non-reflective Switch offers high Isolation & Low Insertion in a miniature outline package. This switch has an integral TTL compatible driver with fast switching. It also consists of two independent TTL control. This switch is supplied with field removable connectors. This device can be also integrated directly in the microstrip circuit without connectors. It is a proven design for harsh environments and is suitable for Airborne, Naval & Ground base applications.



## Electrical Performance

(Applies over the frequency range @ +25 °C, output load impedance of 50 ohms. Unless otherwise stated limits & conditions are indicated values.)

Type	Frequency (GHz)	I/Loss max (dB)	Isolation min (dB)	R/Loss min (dB)	S. Speed max (ns)	I/P Power max (mw)	Logic	Power Supply  V & mA	Dimensions (Ex-Con) mm	Operating Temp °C	Storage Temp °C
SPDT (N/R & Miniature)	0.5 - 18.0	3.3	55	9.5	30	100	'0' = Insertion Loss TTL '1' = Isolation	+5 -15 70 50	22x16x8	-55 to +85	-55 to +125

*M/A-COM Inc. and its affiliates reserve the right to make changes to the product(s) or information contained herein without notice.*

Visit [www.macom.com](http://www.macom.com) for additional data sheets and product information.

- **North America:** Tel. (800) 366-2266
- **Asia/Pacific:** Tel.+81-44-844-8296, Fax +81-44-844-8298
- **Europe:** Tel. +44 (1908) 574 200. Fax+44 (1908) 574 300