

NEW PRODUCT

MITSUBISHI Dig./Ana.INTERFACE

M62704ML,SL

VOLTAGE DETECTING, SYSTEM RESETTIC IC SERIES

GENERAL DESCRIPTION

The M62704ML/SL is a voltage threshold detector designed for detection of a supply voltage and generation of a system reset pulse for almost all logic circuits such as microprocessor.

It also has extensive applications including battery checking, level detecting and waveform shaping circuits.

FEATURES

- Few external components
- Low operating threshold voltage (A supply voltage to keep a output low-state in a low supply operation)
... 0.65V(TYP.) at $R_L = 22k$
- Wide supply voltage range 2V to 7V
- High immunity to a sudden supply voltage change
- Wide application range
- Extra small 3-pin package (3-pin FLAT)

APPLICATION

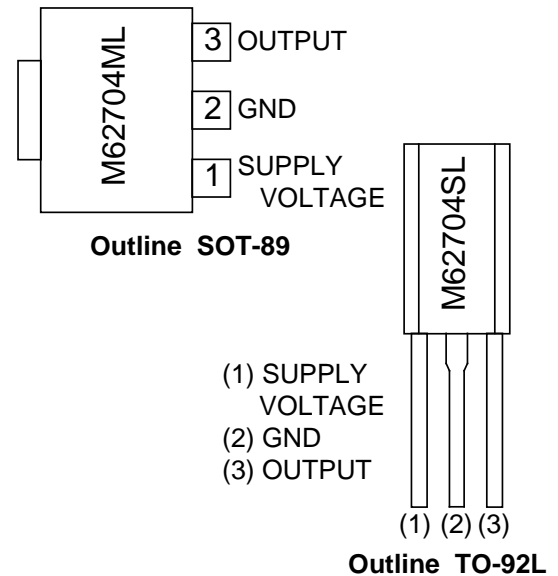
- Reset pulse generation for almost all logic circuits
- Battery checking, level detecting, waveform shaping circuits
- Delayed waveform generator
- Switching circuit to a back-up power supply
- DC/DC converter
- Over voltage protection circuit

RECOMMENDED OPERATING CONDITION

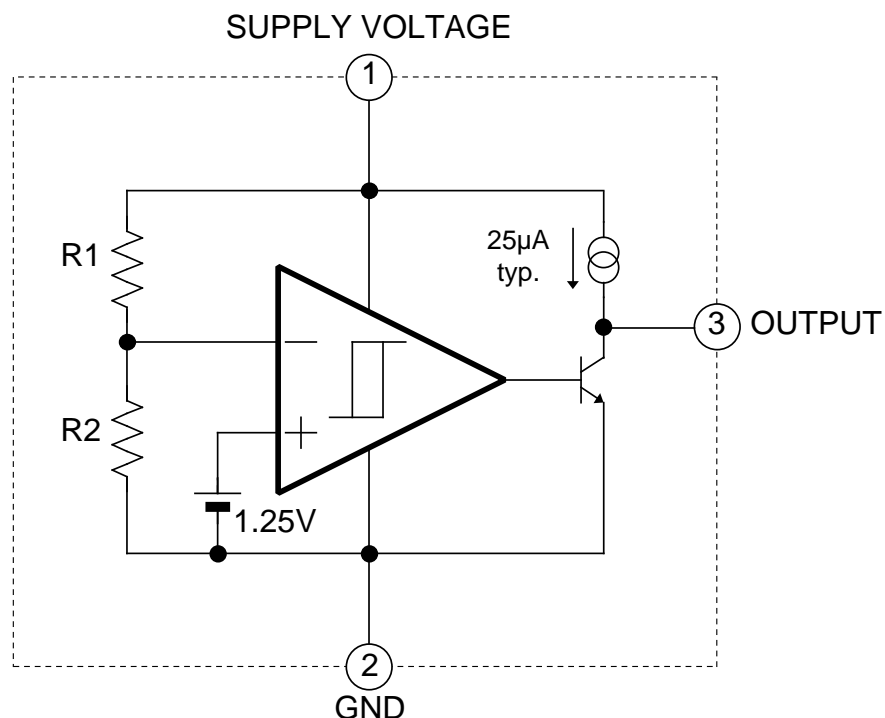
- Supply voltage range 2V to 7V

This product is under the development, therefore the technical specifications may be changed in the future.

PIN CONFIGURATION (TOP VIEW)



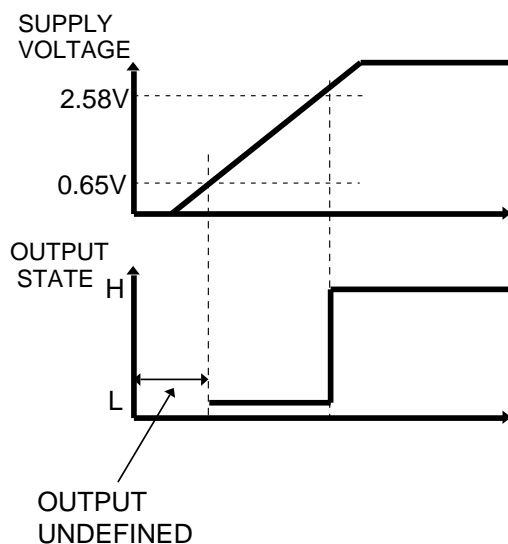
BLOCK DIAGRAM



M62704ML,SL

VOLTAGE DETECTING, SYSTEM RESETTIC IC SERIES

FUNCTION DIAGRAM



ABSOLUTE MAXIMUM RATINGS (Ta=25°C, Unless otherwise noted)

Symbol	Parameter	Test condition		Ratings	Unit
I _{cc}	Supply Voltage			7	V
I _{sink}	Output Sink Current			6	mA
V _o	Output Voltage	Output with constant current load		V _{CC}	V
P _d	Power Dissipation	3pin SIL		700	mW
		3pin FLAT		500	
K _θ	Thermal Derating	Ta 25°C	3PIN SIL	7	mW/°C
			3PIN FLAT	5	
T _{opr}	Operating Temperature			-30 to +85	°C
T _{stg}	Storage Temperature			-40 to +125	°C

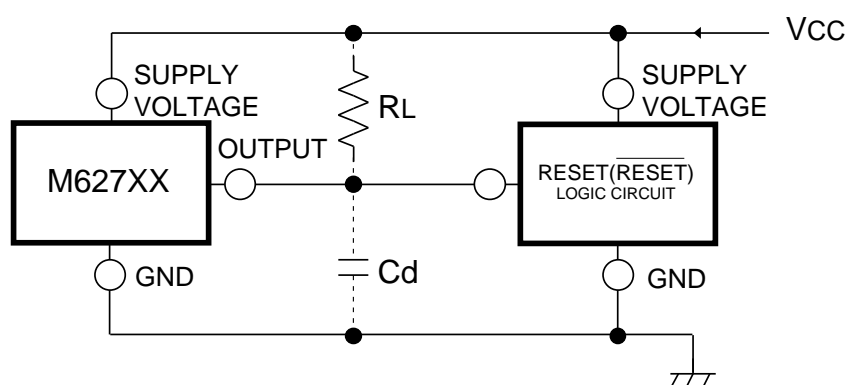
ELECTRICAL CHARACTERISTICS (Ta=25°C, Unless otherwise noted)

Symbol	Parameter	Test condition	Limits			Unit
			MIN	TYP	MAX	
V _s	Detecting Voltage		2.46	2.58	2.70	V
V _s	Hysteresis Voltage		50	80	110	mV
V _s / T	Detecting Voltage Temperature Coefficient		—	0.01	—	%/°C
I _{cc}	Circuit Current	V _{cc} =3V	—	210	340	μA
V _{sat}	Output Saturation Voltage	V _{cc} =2V, I _{sink} =4mA	—	0.2	0.4	V
V _{oPL}	Threshold Operating Voltage	Minimum supply voltage for IC operation	R _L =2.2k, V _{sat} 0.4V	0.7	0.8	V
			R _L =100k, V _{sat} 0.4V	0.6	0.7	
I _{oc}	Output Load Current	V _{cc} =2V, V _o =1/2V _{cc}	-40	-25	-17	μA
V _{OH}	Output HIGH Voltage		V _{cc} -0.2	V _{cc} -0.06		V
t _{PHL}	Propagation Delay Time	Response time when V _{cc} changes H to L	—	6	—	μs
t _{PLH}		Response time when V _{cc} changes L to H	—	3	—	

M62704ML,SL

VOLTAGE DETECTING, SYSTEM RESETTIC IC SERIES

Example of application circuit Reset Circuit of M627XX Series




Note 1.

This IC can be used whether a pull-up resistor is included in the logic circuit or not.

Note 2.

The logic circuit preferably should not have a pull-down resistor, but in case it has, the load resistor R_L of much less than the pull-down resistor must be connected (refer to the application circuit).

 Mitsubishi Electric Corporation puts the maximum effort into making semiconductor products better and more reliable, but there is always the possibility that trouble may occur with them. Trouble with semiconductors may lead to personal injury, fire or property damage. Remember to give due consideration to safety when making your circuit design, in order to prevent fires from spreading, redundancy, malfunction or other mishap.