

# LXT972

## 3.3V Dual-Speed Fast Ethernet Transceiver

### General Description

The LXT972 is an IEEE compliant Fast Ethernet PHY Transceiver that directly supports both 100BASE-TX and 10BASE-T applications. It provides a Media Independent Interface (MII) for easy attachment to 10/100 Media Access Controllers (MACs).

The LXT972 supports full-duplex operation at 10 Mbps and 100 Mbps. Its operating condition can be set using auto-negotiation, parallel detection, or manual control.

The LXT972 is fabricated with an advanced CMOS process and requires only a single 3.3V power supply.

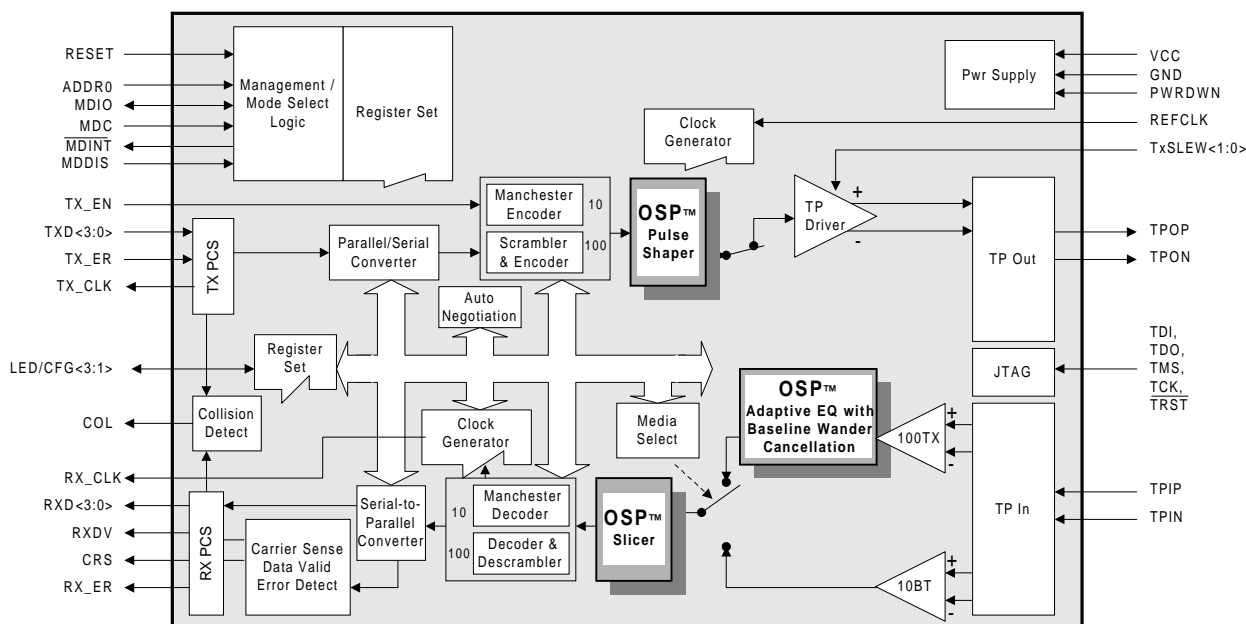
### Applications

- Combination 10BASE-T/100BASE-TX Network Interface Cards (NICs)
- 10/100 PCMCIA Cards
- Cable Modems and Set-Top Boxes

### Features

- 3.3V Operation.
- Low power consumption (300 mW typical).
- 10BASE-T and 100BASE-TX using a single RJ-45 connection.
- Supports auto-negotiation and parallel detection.
- MII interface with extended register capability.
- Robust baseline wander correction performance.
- Standard CSMA/CD or full-duplex operation.
- Configurable via MDIO serial port or hardware control pins.
- Integrated, programmable LED drivers.
- 64-pin Low-profile Quad Flat Package (LQFP).
  - LXT972LC - Commercial (0° to 70°C ambient).

### LXT972 Block Diagram



Refer to [www.level1.com](http://www.level1.com) for most current information.

## TABLE OF CONTENTS

|   |    |   |    |
|---|----|---|----|
| <b>Pin Assignments</b> .....                | 4  | <b>MII Operation</b> .....                  | 18 |
| <b>Signal Descriptions</b> .....            | 6  | MII Clocks.....                             | 18 |
| <b>Functional Description</b> .....         | 10 | Transmit Enable .....                       | 18 |
| <b>Introduction</b> .....                   | 10 | Receive Data Valid.....                     | 18 |
| OSP™ Architecture .....                     | 10 | Carrier Sense.....                          | 18 |
| Comprehensive Functionality.....            | 11 | Error Signals .....                         | 18 |
| <b>Network Media/Protocol Support</b> ..... | 11 | Collision .....                             | 18 |
| 10/100 Network Interface .....              | 11 | Loopback.....                               | 20 |
| Twisted-Pair Interface.....                 | 11 | Operational Loopback .....                  | 20 |
| Fault Detection and Reporting .....         | 11 | Test Loopback.....                          | 20 |
| Remote Fault.....                           | 11 | <b>100 Mbps Operation</b> .....             | 21 |
| MII Data Interface .....                    | 12 | 100BASE-X Network Operation .....           | 21 |
| Configuration Management Interface .....    | 12 | Collision Indication .....                  | 24 |
| MDIO Management Interface .....             | 12 | 100BASE-X Protocol Sublayer Operations..... | 25 |
| MDIO Addressing.....                        | 12 | PCS Sublayer .....                          | 25 |
| MDIO Frame Structure .....                  | 12 | Preamble Handling.....                      | 25 |
| MII Interrupts.....                         | 13 | Dribble Bits .....                          | 25 |
| Hardware Control Interface .....            | 13 | 4B/5B Coding Table .....                    | 26 |
| Operating Requirements.....                 | 14 | PMA Sublayer.....                           | 27 |
| Power Requirements .....                    | 14 | Link .....                                  | 27 |
| Clock Requirements .....                    | 14 | Link Failure Override.....                  | 27 |
| External Crystal Oscillator .....           | 14 | Carrier Sense .....                         | 27 |
| <b>Initialization</b> .....                 | 14 | Receive Data Valid .....                    | 27 |
| MDIO Control Mode.....                      | 14 | Twisted-Pair PMD Sublayer.....              | 27 |
| Hardware Control Mode.....                  | 14 | Scrambler/Descrambler.....                  | 27 |
| Reduced Power Modes.....                    | 15 | Baseline Wander Correction .....            | 27 |
| Hardware Power Down .....                   | 15 | Polarity Correction.....                    | 27 |
| Software Power Down.....                    | 15 | Programmable Slew Rate Control .....        | 27 |
| Reset.....                                  | 15 | <b>10 Mbps Operation</b> .....              | 28 |
| Hardware Configuration Settings .....       | 16 | 10T Preamble Handling .....                 | 28 |
| <b>Establishing Link</b> .....              | 17 | 10T Carrier Sense.....                      | 28 |
| Auto-Negotiation .....                      | 17 | 10T Dribble Bits.....                       | 28 |
| Base Page Exchange.....                     | 17 | 10T Link Integrity Test .....               | 28 |
| Next Page Exchange.....                     | 17 | Link Failure.....                           | 28 |
| Controlling Auto-Negotiation .....          | 17 | 10T SQE (Heartbeat) .....                   | 28 |
| Parallel Detection.....                     | 17 | 10T Jabber .....                            | 28 |
|   |    | 10T Polarity Correction .....               | 28 |

|  |    |   |    |
|--|----|---|----|
| <b>Monitoring Operations</b> .....                 | 29 | A/N Expansion Register (Address 6) .....                      | 56 |
| Monitoring Auto-Negotiation .....                  | 29 | A/N Next Page Transmit Register (Address 7) ..                | 57 |
| Monitoring Next Page Exchange .....                | 29 | A/N Link Partner Next Page Receive Register (Address 8) ..... | 57 |
| LED Functions .....                                | 29 | Port Configuration Register (Address 16) .....                | 58 |
| LED Pulse Stretching .....                         | 30 | Quick Status Register (Address 17) .....                      | 59 |
| <b>Boundary Scan (JTAG) Functions</b> .....        | 31 | Interrupt Enable Register (Address 18) .....                  | 60 |
| Boundary Scan Interface .....                      | 31 | Interrupt Status Register (Address 19) .....                  | 61 |
| State Machine .....                                | 31 | LED Configuration Register (Address 20) .....                 | 62 |
| Instruction Register .....                         | 31 | Transmit Control Register (Address 30) .....                  | 64 |
| Boundary Scan Register (BSR) .....                 | 31 | <b>Package Specifications</b> .....                           | 65 |
| <b>Application Information</b> .....               | 32 | <b>Revision History</b> .....                                 | 66 |
| Magnetics Information .....                        | 32 |   |    |
| Typical Twisted-Pair Interface .....               | 34 |   |    |
| Typical MII Interface .....                        | 35 |   |    |
| <b>Preliminary Test Specifications</b> .....       | 36 |   |    |
| <b>Electrical Parameters</b> .....                 | 36 |   |    |
| Absolute Maximum Ratings .....                     | 36 |   |    |
| Operating Conditions .....                         | 36 |   |    |
| Digital I/O Characteristics .....                  | 37 |   |    |
| Digital I/O Characteristics - MII Pins .....       | 37 |   |    |
| I/O Characteristics - REFCLK/XI and XO Pins ..     | 37 |   |    |
| I/O Characteristics - LED/CFG Pins .....           | 38 |   |    |
| 100BASE-TX Transceiver Characteristics .....       | 38 |   |    |
| 10BASE-T Transceiver Characteristics .....         | 38 |   |    |
| 10BASE-T Link Integrity Timing Characteristics     | 39 |   |    |
| <b>Timing Diagrams</b> .....                       | 40 |   |    |
| 100BASE-TX Receive Timing - 4B Mode .....          | 40 |   |    |
| 100BASE-TX Transmit Timing - 4B Mode .....         | 41 |   |    |
| 10BASE-T Receive Timing .....                      | 42 |   |    |
| 10BASE-T Transmit Timing .....                     | 43 |   |    |
| 10BASE-T Jab and Unjab Timing .....                | 44 |   |    |
| Auto Negotiation and Fast Link Pulse Timing ....   | 45 |   |    |
| MDIO Timing .....                                  | 46 |   |    |
| Power-Up Timing .....                              | 47 |   |    |
| RESET Pulse Width and Recovery Timing .....        | 47 |   |    |
| <b>Register Definitions</b> .....                  | 48 |   |    |
| Control Register (Address 0) .....                 | 51 |   |    |
| Status Register (Address 1) .....                  | 52 |   |    |
| PHY Identification Register 1 (Address 2) .....    | 53 |   |    |
| PHY Identification Register 2 (Address 3) .....    | 53 |   |    |
| A/N Advertisement Register (Address 4) .....       | 54 |   |    |
| A/N Link Partner Ability Register (Address 5) .... | 55 |   |    |

## PIN ASSIGNMENTS

Figure 1: 64-Pin LQFP Pin Assignments

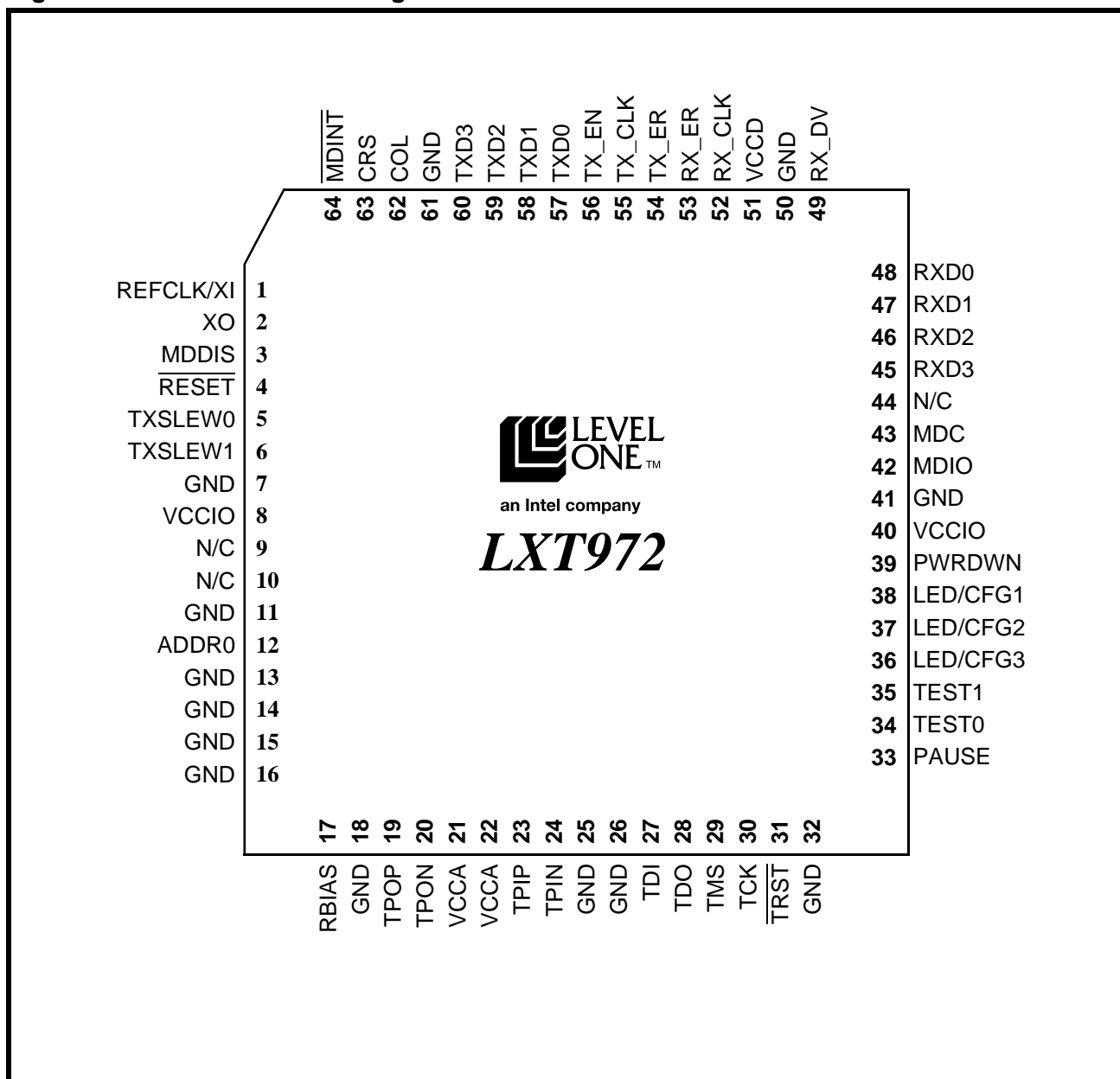


Table 1: LQFP Numeric Pin List

| Pin | Symbol                    | Type         | Reference for Full Description |
|-----|---------------------------|--------------|--------------------------------|
| 1.  | REFCLK/XI                 | Input        | Table 4 on page 8              |
| 2.  | XO                        | Output       | Table 4 on page 8              |
| 3.  | MDDIS                     | Input        | Table 2 on page 6              |
| 4.  | $\overline{\text{RESET}}$ | Input        | Table 4 on page 8              |
| 5.  | TxSLEW0                   | Input        | Table 4 on page 8              |
| 6.  | TxSLEW1                   | Input        | Table 4 on page 8              |
| 7.  | GND                       | –            | Table 5 on page 9              |
| 8.  | VCCIO                     | –            | Table 5 on page 9              |
| 9.  | N/C                       | –            | Table 4 on page 8              |
| 10. | N/C                       | –            | Table 4 on page 8              |
| 11. | GND                       | –            | Table 5 on page 9              |
| 12. | ADDR0                     | Input        | Table 4 on page 8              |
| 13. | GND                       | –            | Table 5 on page 9              |
| 14. | GND                       | –            | Table 5 on page 9              |
| 15. | GND                       | –            | Table 5 on page 9              |
| 16. | GND                       | –            | Table 5 on page 9              |
| 17. | RBIAS                     | Analog Input | Table 4 on page 8              |
| 18. | GND                       | –            | Table 5 on page 9              |
| 19. | TPOP                      | Output       | Table 3 on page 7              |
| 20. | TPON                      | Output       | Table 3 on page 7              |
| 21. | VCCA                      | –            | Table 5 on page 9              |
| 22. | VCCA                      | –            | Table 5 on page 9              |
| 23. | TPIP                      | Input        | Table 3 on page 7              |
| 24. | TPIN                      | Input        | Table 3 on page 7              |
| 25. | GND                       | –            | Table 5 on page 9              |
| 26. | GND                       | –            | Table 5 on page 9              |
| 27. | TDI                       | Input        | Table 6 on page 9              |
| 28. | TDO                       | Output       | Table 6 on page 9              |
| 29. | TMS                       | Input        | Table 6 on page 9              |
| 30. | TCK                       | Input        | Table 6 on page 9              |
| 31. | $\overline{\text{TRST}}$  | Input        | Table 6 on page 9              |
| 32. | GND                       | –            | Table 5 on page 9              |
| 33. | PAUSE                     | Input        | Table 4 on page 8              |

Table 1: LQFP Numeric Pin List – continued

| Pin | Symbol                    | Type       | Reference for Full Description |
|-----|---------------------------|------------|--------------------------------|
| 34. | TEST0                     | Input      | Table 4 on page 8              |
| 35. | TEST1                     | Input      | Table 4 on page 8              |
| 36. | LED/CFG3                  | I/O        | Table 7 on page 9              |
| 37. | LED/CFG2                  | I/O        | Table 7 on page 9              |
| 38. | LED/CFG1                  | I/O        | Table 7 on page 9              |
| 39. | PWRDWN                    | Input      | Table 4 on page 8              |
| 40. | VCCIO                     | –          | Table 5 on page 9              |
| 41. | GND                       | –          | Table 5 on page 9              |
| 42. | MDIO                      | I/O        | Table 2 on page 6              |
| 43. | MDC                       | Input      | Table 2 on page 6              |
| 44. | N/C                       | –          | Table 4 on page 8              |
| 45. | RXD3                      | Output     | Table 2 on page 6              |
| 46. | RXD2                      | Output     | Table 2 on page 6              |
| 47. | RXD1                      | Output     | Table 2 on page 6              |
| 48. | RXD0                      | Output     | Table 2 on page 6              |
| 49. | RX_DV                     | Output     | Table 2 on page 6              |
| 50. | GND                       | –          | Table 5 on page 9              |
| 51. | VCCD                      | –          | Table 5 on page 9              |
| 52. | RX_CLK                    | Output     | Table 2 on page 6              |
| 53. | RX_ER                     | Output     | Table 2 on page 6              |
| 54. | TX_ER                     | Input      | Table 2 on page 6              |
| 55. | TX_CLK                    | Output     | Table 2 on page 6              |
| 56. | TX_EN                     | Input      | Table 2 on page 6              |
| 57. | TXD0                      | Input      | Table 2 on page 6              |
| 58. | TXD1                      | Input      | Table 2 on page 6              |
| 59. | TXD2                      | Input      | Table 2 on page 6              |
| 60. | TXD3                      | Input      | Table 2 on page 6              |
| 61. | GND                       | –          | Table 5 on page 9              |
| 62. | COL                       | Output     | Table 2 on page 6              |
| 63. | CRS                       | Output     | Table 2 on page 6              |
| 64. | $\overline{\text{MDINT}}$ | Open Drain | Table 2 on page 6              |

## SIGNAL DESCRIPTIONS

Table 2: LXT972 MII Signal Descriptions

| LQFP Pin#  | Symbol                       | Type <sup>1</sup> | Signal Description   |
|--|------------------------------|-------------------|--|
| <b>Data Interface Pins</b>   |                              |                   |  |
| 60<br>59<br>58<br>57   | TXD3<br>TXD2<br>TXD1<br>TXD0 | I                 | <b>Transmit Data.</b> TXD is a bundle of parallel data signals that are driven by the MAC. TXD<3:0> shall transition synchronously with respect to the TX_CLK. TXD<0> is the least significant bit.  |
| 56   | TX_EN                        | I                 | <b>Transmit Enable.</b> The MAC asserts this signal when it drives valid data on TXD. This signal must be synchronized to TX_CLK.  |
| 55   | TX_CLK                       | O                 | <b>Transmit Clock.</b> TX_CLK is sourced by the PHY in both 10 and 100 Mbps operations. 2.5 MHz for 10 Mbps operation, 25 MHz for 100 Mbps operation.  |
| 45<br>46<br>47<br>48   | RXD3<br>RXD2<br>RXD1<br>RXD0 | O                 | <b>Receive Data.</b> RXD is a bundle of parallel signals that transition synchronously with respect to the RX_CLK. RXD<0> is the least significant bit.  |
| 49   | RX_DV                        | O                 | <b>Receive Data Valid.</b> The LXT972 asserts this signal when it drives valid data on RXD. This output is synchronous to RX_CLK.  |
| 53   | RX_ER                        | O                 | <b>Receive Error.</b> Signals a receive error condition has occurred. This output is synchronous to RX_CLK.  |
| 54   | TX_ER                        | I                 | <b>Transmit Error.</b> Signals a transmit error condition. This signal must be synchronized to TX_CLK.   |
| 52   | RX_CLK                       | O                 | <b>Receive Clock.</b> 25 MHz for 100 Mbps operation, 2.5 MHz for 10 Mbps operation. Refer to “Clock Requirements” on page 14 in the Functional Description section.  |
| 62   | COL                          | O                 | <b>Collision Detected.</b> The LXT972 asserts this output when a collision is detected. This output remains High for the duration of the collision. This signal is asynchronous and is inactive during full-duplex operation.  |
| 63   | CRS                          | O                 | <b>Carrier Sense.</b> During half-duplex operation (bit 0.8 = 0), the LXT972 asserts this output when either transmitting or receiving data packets. During full-duplex operation (bit 0.8 = 1), CRS is asserted during receive. CRS assertion is asynchronous with respect to RX_CLK. CRS is de-asserted on loss of carrier, synchronous to RX_CLK.           |
| <b>MDIO Control Interface Pins</b>   |                              |                   |  |
| 3  | MDDIS                        | I                 | <b>Management Disable.</b> When MDDIS is High, the MDIO is disabled from read and write operations.<br>When MDDIS is Low at power up or reset, the Hardware Control Interface pins control only the initial or “default” values of their respective register bits. After the power-up/reset cycle is complete, bit control reverts to the MDIO serial channel. |
| 1. Type Column Coding: I = Input, O = Output, A = Analog, OD = Open Drain. |                              |                   |  |

**Table 2: LXT972 MII Signal Descriptions – continued**

| LQFP Pin#  | Symbol                    | Type <sup>1</sup> | Signal Description  |
|--|---------------------------|-------------------|---|
| 43   | MDC                       | I                 | <b>Management Data Clock.</b> Clock for the MDIO serial data channel. Maximum frequency is 8 MHz.   |
| 42   | MDIO                      | I/O               | <b>Management Data Input/Output.</b> Bidirectional serial data channel for PHY/STA communication.   |
| 64   | $\overline{\text{MDINT}}$ | OD                | <b>Management Data Interrupt.</b> When bit 18.1 = 1, an active Low output on this pin indicates status change. Interrupt is cleared by reading Register 19. |
| 1. Type Column Coding: I = Input, O = Output, A = Analog, OD = Open Drain. |                           |                   |   |

**Table 3: LXT972 Network Interface Signal Descriptions**

| LQFP Pin#   | Symbol       | Type <sup>1</sup> | Signal Description  |
|---|--------------|-------------------|---|
| 19<br>20  | TPOP<br>TPON | O                 | <b>Twisted-Pair Outputs, Positive &amp; Negative.</b><br>During 100BASE-TX or 10BASE-T operation, TPOP/N pins drive 802.3 compliant pulses onto the line.                       |
| 23<br>24  | TPIP<br>TPIN | I                 | <b>Twisted-Pair Inputs, Positive &amp; Negative.</b><br>During 100BASE-TX or 10BASE-T operation, TPIP/N pins receive differential 100BASE-TX or 10BASE-T signals from the line. |
| 1. Type Column Coding: I = Input, O = Output, A = Analog, OD = Open Drain |              |                   |   |

Table 4: LXT972 Miscellaneous Signal Descriptions

| LQFP Pin#   | Symbol             | Type <sup>1</sup> | Signal Description  |         |                                |
|---|--------------------|-------------------|---|---------|--------------------------------|
| 5<br>6  | TxSLEW0<br>TxSLEW1 | I                 | Tx Output Slew Controls 0 and 1. These pins select the TX output slew rate (rise and fall time) as follows:   |         |                                |
|   |                    |                   | TxSLEW1   | TxSLEW0 | Slew Rate (Rise and Fall Time) |
|   |                    |                   | 0   | 0       | 2.5 ns                         |
|   |                    |                   | 0   | 1       | 3.1 ns                         |
|   |                    |                   | 1   | 0       | 3.7 ns                         |
|   |                    |                   | 1   | 1       | 4.3 ns                         |
| 4   | RESET              | I                 | Reset. This active Low input is OR’ed with the control register Reset bit (0.15). The LXT972 reset cycle is extended to 258 μs (nominal) after reset is deas-<br>serted.                                  |         |                                |
| 12  | ADDR0              | I                 | Address0. Sets device address.  |         |                                |
| 17  | RBIAS              | AI                | Bias. This pin provides bias current for the internal circuitry. Must be tied to ground through a 22.1 kΩ, 1% resistor.   |         |                                |
| 33  | PAUSE              | I                 | Pause. When set High, the LXT972 advertises Pause capabilities during auto negotiation.   |         |                                |
| 34  | TEST0              | I                 | Test. Tie Low.  |         |                                |
| 35  | TEST1              | I                 | Test. Tie Low.  |         |                                |
| 39  | PWRDWN             | I                 | Power Down. When set High, this pin puts the LXT972 in a power-down mode.   |         |                                |
| 1<br>2  | REFCLK/XI<br>XO    | I<br>O            | Crystal Input and Output. A 25 MHz crystal oscillator circuit can be con-<br>nected across XI and XO. A clock can also be used at XI. Refer to Functional<br>Description for detailed clock requirements. |         |                                |
| 9, 10,<br>44  | N/C                | -                 | No Connection. These pins are not used and should not be terminated.  |         |                                |
| 1. Type Column Coding: I = Input, O = Output, A = Analog, OD = Open Drain |                    |                   |   |         |                                |

1. Type Column Coding: I = Input, O = Output, A = Analog, OD = Open Drain



**Table 5: LXT972 Power Supply Signal Descriptions**

| LQFP Pin#   | Symbol | Type | Signal Description   |
|---|--------|------|--|
| 51  | VCCD   | -    | <b>Digital Power.</b> Requires a 3.3V power supply.  |
| 7, 11, 13, 14, 15, 16, 18, 25, 26, 32, 41, 50, 61 | GND    | -    | <b>Ground.</b>   |
| 8, 40   | VCCIO  | -    | <b>MII Power.</b> Requires either a 3.3V or a 2.5V supply. Must be supplied from the same source used to power the MAC on the other side of the MII. |
| 21, 22  | VCCA   | -    | <b>Analog Power.</b> Requires a 3.3V power supply.   |

**Table 6: LXT972 JTAG Test Signal Descriptions**

| LQFP Pin#   | Symbol                                | Type <sup>1</sup> | Signal Description   |
|---|---------------------------------------|-------------------|--|
| 27  | TDI <sup>2</sup>                      | I                 | <b>Test Data Input.</b> Test data sampled with respect to the rising edge of TCK.  |
| 28  | TDO <sup>2</sup>                      | O                 | <b>Test Data Output.</b> Test data driven with respect to the falling edge of TCK. |
| 29  | TMS <sup>2</sup>                      | I                 | <b>Test Mode Select.</b>   |
| 30  | TCK <sup>2</sup>                      | I                 | <b>Test Clock.</b> Test clock input sourced by ATE.                                |
| 31  | $\overline{\text{TRST}}$ <sup>2</sup> | I                 | <b>Test Reset.</b> Test reset input sourced by ATE.                                |
| 1. Type Column Coding: I = Input, O = Output, A = Analog, OD = Open Drain.<br>2. If JTAG port is not used, these pins do not need to be terminated. |                                       |                   |  |

**Table 7: LXT972 LED Signal Descriptions**

| LQFP Pin#   | Symbol                           | Type <sup>1</sup> | Signal Description  |
|---|----------------------------------|-------------------|---|
| 38<br>37<br>36  | LED/CFG1<br>LED/CFG2<br>LED/CFG3 | I/O               | <b>LED Drivers 1 -3.</b> These pins drive LED indicators. Each LED can display one of several available status conditions as selected by the LED Configuration Register (refer to <a href="#">Table 50 on page 62</a> for details).<br><b>Configuration Inputs 1-3.</b> These pins also provide initial configuration settings (refer to <a href="#">Table 8 on page 16</a> for details). |
| 1. Type Column Coding: I = Input, O = Output, A = Analog, OD = Open Drain |                                  |                   |   |

---

## FUNCTIONAL DESCRIPTION

---

### Introduction

The LXT972 is a single-port Fast Ethernet 10/100 Transceiver that supports 10 Mbps and 100 Mbps networks. It complies with all applicable requirements of IEEE 802.3. The LXT972 can directly drive either a 100BASE-TX line (up to 140 meters) or a 10BASE-T line (up to 185 meters).

### Comprehensive Functionality

The LXT972 provides a standard Media Independent Interface (MII) for 10/100 MACs. The LXT972 performs all functions of the Physical Coding Sublayer (PCS) and Physical Media Attachment (PMA) sublayer as defined in the IEEE 802.3 100BASE-X standard. This device also performs all functions of the Physical Media Dependent (PMD) sublayer for 100BASE-TX connections.

On power-up, the LXT972 reads its configuration pins to check for forced operation settings. If not configured for forced operation, it uses auto-negotiation/parallel detection to automatically determine line operating conditions. If the PHY device on the other side of the link supports auto-negotiation, the LXT972 will auto-negotiate with it using Fast Link Pulse (FLP) Bursts. If the PHY partner does not support auto-negotiation, the LXT972 will automatically detect the presence of either link pulses (10 Mbps PHY) or Idle symbols (100 Mbps PHY) and set its operating conditions accordingly.

The LXT972 provides half-duplex and full-duplex operation at 100 Mbps and 10 Mbps.

### OSP™ Architecture

Level One's LXT972 incorporates high-efficiency Optimal Signal Processing™ design techniques, combining the best properties of digital and analog signal processing to produce a truly optimal device.

The receiver utilizes decision feedback equalization to increase noise and cross-talk immunity by as much as 3 dB over an ideal all-analog equalizer. Using OSP mixed-signal processing techniques in the receive equalizer avoids the quantization noise and calculation truncation errors found in traditional DSP-based receivers (typically complex DSP engines with A/D converters). This results in improved receiver noise and cross-talk performance.

The OSP signal processing scheme also requires substantially less computational logic than traditional DSP-based designs. This lowers power consumption and also reduces the logic switching noise generated by DSP engines. This logic switching noise can be a considerable source of EMI generated on the device's power supplies.

The OSP-based LXT972 provides improved data recovery, EMI performance and low power consumption.

## Network Media / Protocol Support

The LXT972 supports both 10BASE-T and 100BASE-TX Ethernet over twisted-pair.

### 10/100 Network Interface

The network interface port consists of two differential signal pairs. Refer to [Table 3](#) for specific pin assignments.

The LXT972 output drivers generate either 100BASE-TX or 10BASE-T. When not transmitting data, the LXT972 generates 802.3-compliant link pulses or idle code. Input signals are decoded either as a 100BASE-TX or 10BASE-T input, depending on the mode selected. Auto-negotiation/parallel detection or manual control is used to determine the speed of this interface.

### Twisted-Pair Interface

The LXT972 supports either 100BASE-TX or 10BASE-T connections over 100Ω, Category 5, Unshielded Twisted Pair (UTP) cable. When operating at 100 Mbps, the LXT971 continuously transmits and receives MLT3 symbols. When not transmitting data, the LXT971 generates “IDLE” symbols.

During 10 Mbps operation, Manchester-encoded data is exchanged. When no data is being exchanged, the line is left in an idle state. Link pulses are transmitted periodically to keep the link up.

Only a transformer, RJ-45 connector, load resistor, and bypass capacitors are required to complete this interface. On the transmit side, the LXT972 has an active internal termination and does not require external termination resistors. Level One's patented wave-shaping technology shapes the outgoing signal to help reduce the need for external EMI filters. Four slew rate settings (refer to [Table 4 on page 8](#)) allow the designer to match the output waveform to the magnetic characteristics. On the receive side, the internal impedance is high enough that it has no practical effect on the external termination circuit.

## Fault Detection and Reporting

The LXT972 supports one fault detection and reporting mechanism. “Remote Fault” refers to a MAC-to-MAC communication function that is essentially transparent to PHY layer devices. It is used only during Auto-Negotiation, and therefore is applicable only to twisted-pair links. “Far-End Fault”, on the other hand, is an optional PMA-layer function that may be embedded within PHY devices. The LXT972 supports only the Remote Fault Function, explained in the paragraph that follows.

### Remote Fault

Bit 4.13 in the Auto-Negotiation Advertisement Register is reserved for Remote Fault indications. It is typically used when re-starting the auto-negotiation sequence to indicate to the link partner that the link is down because the advertising device detected a fault.

When the LXT972 receives a Remote Fault indication from its partner during auto-negotiation it:

- sets bit 5.13 in the Link Partner Base Page Ability Register, and
- sets the Remote Fault bit 1.4 in the MII Status Register to pass this information to the local controller.

## MII Data Interface

The LXT972 supports a standard Media Independent Interface (MII). The MII consists of a data interface and a management interface. The MII Data Interface passes data between the LXT972 and a Media Access Controller (MAC). Separate parallel buses are provided for transmit and receive. This interface operates at either 10 Mbps or 100 Mbps. The speed is set automatically, once the operating conditions of the network link have been determined. Refer to “[MII Operation](#)” on [page 18](#) for additional details.

## Configuration Management Interface

The LXT972 provides both an MDIO interface and a Hardware Control Interface for device configuration and management.

### MDIO Management Interface

The LXT972 supports the IEEE 802.3 MII Management Interface also known as the Management Data Input/Output (MDIO) Interface. This interface allows upper-layer devices to monitor and control the state of the LXT972. The MDIO interface consists of a physical connection, a specific protocol that runs across the connection, and an internal set of addressable registers.

Some registers are required and their functions are defined by the IEEE 802.3 standard. The LXT972 also supports additional registers for expanded functionality. The LXT972 supports multiple internal registers, each of which is 16 bits wide. Specific register bits are referenced using an “X.Y” notation, where X is the register number (0-31) and Y is the bit number (0-15).

The physical interface consists of a data line (MDIO) and clock line (MDC). Operation of this interface is controlled by the MDDIS input pin. When MDDIS is High, the MDIO read and write operations are disabled and the Hardware Control Interface provides primary configuration control. When MDDIS is Low, the MDIO port is enabled for both read and write operations and the Hardware Control Interface is not used.

### MDIO Addressing

The protocol allows one controller to communicate between two LXT972 chips. Pin ADDR0 is set high or low to determine the chip address.

### MDIO Frame Structure

The physical interface consists of a data line (MDIO) and clock line (MDC). The frame structure is shown in [Figures 2 and 3](#) (read and write). MDIO Interface timing is shown in [Table 32](#) on [page 46](#).

Figure 2: Management Interface Read Frame Structure

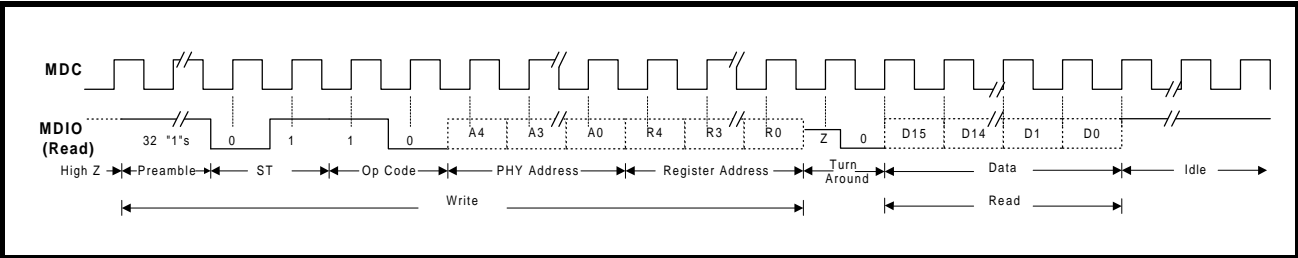
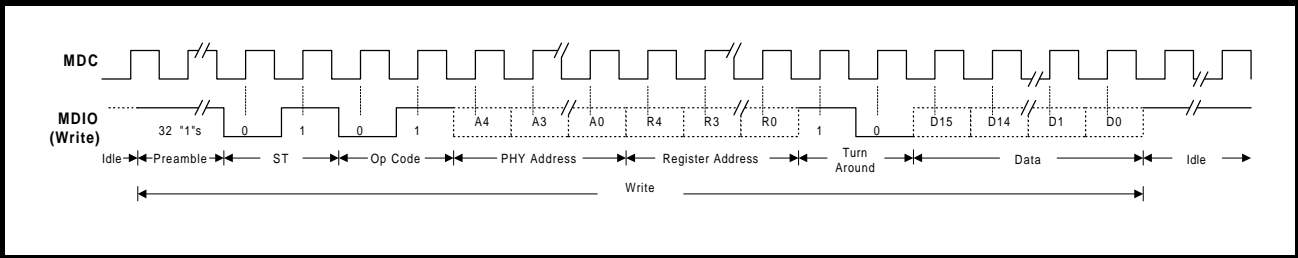


Figure 3: Management Interface Write Frame Structure



## MII Interrupts

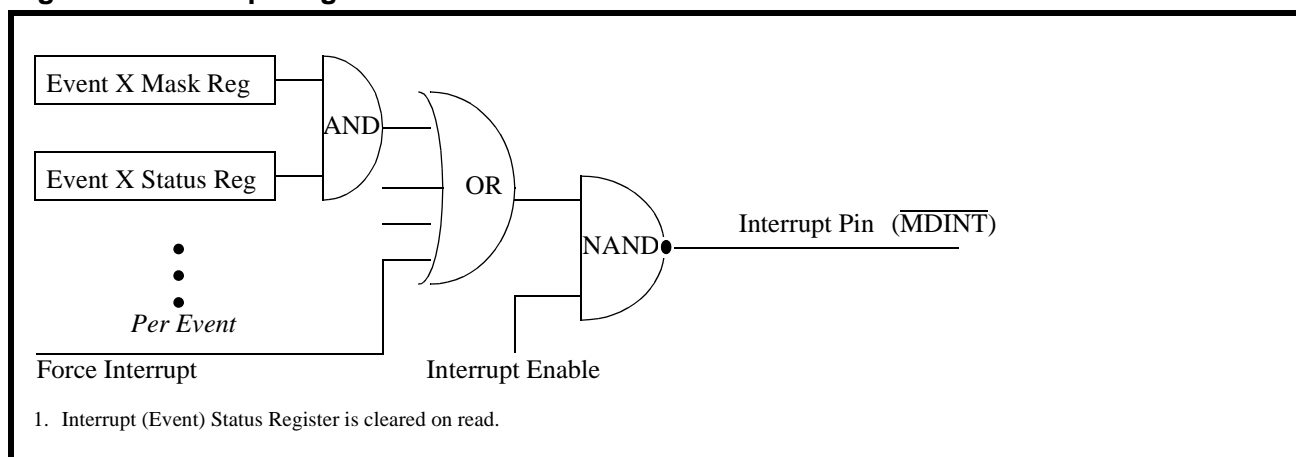
The LXT972 provides a single interrupt pin ( $\overline{\text{MDINT}}$ ). Interrupt logic is shown in Figure 4. The LXT972 also provides two dedicated interrupt registers. Register 18 provides interrupt enable and mask functions and Register 19 provides interrupt status. Setting bit 18.1 = 1, enables the device to request interrupt via the  $\overline{\text{MDINT}}$  pin. An active Low on this pin indicates a status change on the LXT972. Interrupts may be caused by four conditions:

- Auto-negotiation complete
- Speed status change
- Duplex status change
- Link status change

## Hardware Control Interface

The LXT972 provides a Hardware Control Interface for applications where the MDIO is not desired. The Hardware Control Interface uses the three LED driver pins to set device configuration. Refer to the [Hardware Configuration Settings](#) section on page 16 for additional details.

**Figure 4: Interrupt Logic**



## Operating Requirements

### Power Requirements

The LXT972 requires three power supply inputs (VCCD, VCCA, and VCCIO). The digital and analog circuits require 3.3V supplies (VCCD and VCCA). These inputs may be supplied from a single source. Each supply input must be decoupled to ground.

An additional supply may be used for the MII (VCCIO). The supply may be either +2.5V or +3.3V. Also, the inputs on the MII interface are tolerant to 5V signals from the controller on the other side of the MII interface. Refer to [Table 19 on page 37](#) for MII I/O characteristics.

As a matter of good practice, these supplies should be as clean as possible.

### Clock Requirements

#### External Crystal/Oscillator

The LXT972 requires a reference clock input. It may be provided by either of two methods: by connecting a crystal across the oscillator pins (XI and XO), or by connecting an external clock source to pin XI. When a clock is supplied to XI, XO is left open.

A crystal is typically used in NIC applications. An external 25 MHz clock source, rather than a crystal, is frequently used in switch applications. Refer to Preliminary Test Specifications, [Table 20 on page 37](#), for clock timing requirements.

#### MDIO Clock

The MII management channel (MDIO) also requires an external clock. The managed data clock (MDC) speed is a maximum of 8 MHz. Refer to [Table 32 on page 46](#) for details.

## Initialization

When the LXT972 is first powered on, reset, or encounters a link failure state, it checks the MDIO register configuration bits to determine the line speed and operating conditions to use for the network link. The configuration bits may be set by the Hardware Control or MDIO interface as shown in [Figure 5](#).

### MDIO Control Mode

In the MDIO Control mode, the LXT972 reads the Hardware Control Interface pins to set the initial (default)

values of the MDIO registers. Once the initial values are set, bit control reverts to the MDIO interface.

### Hardware Control Mode

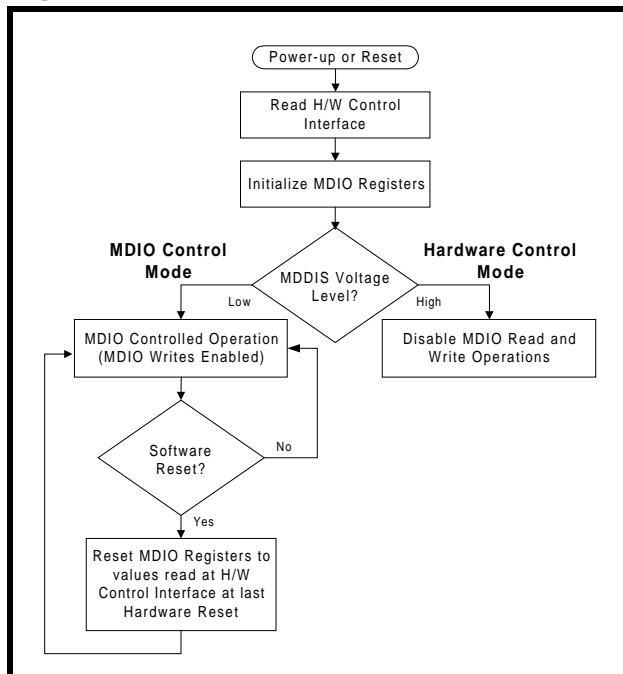
In the Hardware Control Mode, LXT972 disables direct write operations to the MDIO registers via the MDIO Interface. On power-up or hardware reset the LXT972 reads the Hardware Control Interface pins and sets the MDIO registers accordingly.

The following modes are available using either Hardware Control or MDIO Control:

- Force network link operation to:
  - 100TX, Full-Duplex.
  - 100TX, Half-Duplex.
  - 10BASE-T, Full-Duplex.
  - 10BASE-T, Half-Duplex.
- Allow auto-negotiation / parallel-detection.

When the network link is forced to a specific configuration, the LXT972 immediately begins operating the network interface as commanded. When auto-negotiation is enabled, the LXT972 begins the auto-negotiation / parallel-detection operation.

**Figure 5: Initialization Sequence**



## Reduced Power Modes

The LXT972 offers two power-down modes.

### Hardware Power Down

The hardware power-down mode is controlled by the PWRDWN pin. When PWRDWN is High, the following conditions are true:

- The LXT972 network port and clock are shut down.
- All outputs are tri-stated.
- All weak pad pull-up and pull-down resistors are disabled.
- The MDIO registers are not accessible.

### Software Power Down

Software power-down control is provided by bit 0.11 in the Control Register (refer to [Table 37 on page 51](#)). During soft power-down, the following conditions are true:

- The network port is shut down.
- The MDIO registers remain accessible.

## Reset

The LXT972 provides both hardware and software resets. Configuration control of Auto-Negotiation, speed and duplex mode selection is handled differently for each. During a hardware reset, Auto-Negotiation and Speed are read in from pins (refer to [Table 8 on page 16](#) for pin settings and to [Table 37 on page 51](#) for register bit definitions).

During a software reset ( $0.15 = 1$ ), these bit settings are not re-read from the pins. They revert back to the values that were read in during the last hardware reset. Therefore, any changes to pin values made since the last hardware reset will not be detected during a software reset.

During a hardware reset, register information is unavailable for 1 ms after de-assertion of the reset. During a software reset ( $0.15 = 1$ ) the registers are available for reading. The reset bit should be polled to see when the part has completed reset ( $0.15 = 0$ ).

# Hardware Configuration Settings

The LXT972 provides a hardware option to set the initial device configuration. The hardware option uses the three LED driver pins. This provides three control bits, as listed in Table 8. The LED drivers can operate as either open-drain or open-source circuits as shown in Figure 6.

Figure 6: Hardware Configuration Settings

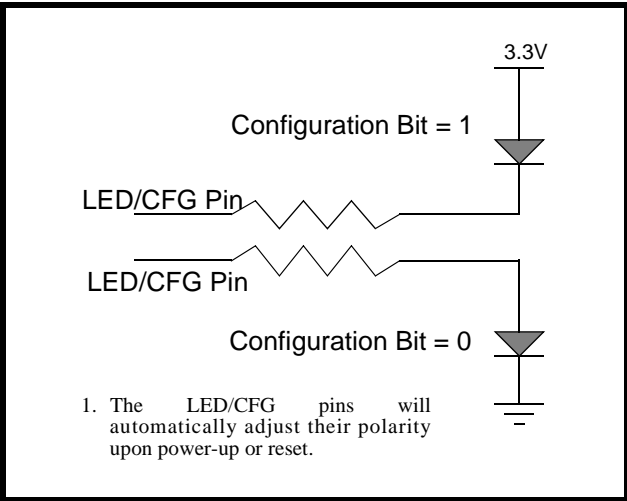


Table 8: Hardware Configuration Settings

| Desired Mode |                 |              | LED/CFG <sub>n</sub><br>Pin Settings <sup>1</sup> |      |      | Resulting Register Bit Values |               |           |  |              |             |            |
|--------------|-----------------|--------------|---|------|------|-------------------------------|---------------|-----------|--|--------------|-------------|------------|
|              |                 |              |   |      |      | Control Register              |               |           | Auto-Neg Advertisement                   |              |             |            |
| Auto-Neg     | Speed<br>(Mbps) | Duplex       | 1   | 2    | 3    | AutoNeg<br>0.12               | Speed<br>0.13 | FD<br>0.8 | 100FD<br>4.8                             | 100TX<br>4.7 | 10FD<br>4.6 | 10T<br>4.5 |
| Disabled     | 10              | Half         | Low   | Low  | Low  | 0                             | 0             | 0         | N/A<br>Auto-Negotiation<br>Advertisement |              |             |            |
|              |                 | Full         | Low   | Low  | High |                               |               | 1         |  |              |             |            |
|              | 100             | Half         | Low   | High | Low  |                               | 1             | 0         |  |              |             |            |
|              |                 | Full         | Low   | High | High |                               |               | 1         |  |              |             |            |
| Enabled      | 100 Only        | Half         | High  | Low  | Low  | 1                             | 1             | 0         | 0  | 1            | 0           | 0          |
|              |                 | Full         | High  | Low  | High |                               |               | 1         | 1  | 1            | 0           | 0          |
|              | 10/100          | Half Only    | High  | High | Low  |                               |               | 0         | 0  | 1            | 0           | 1          |
|              |                 | Full or Half | High  | High | High |                               |               | 1         | 1  | 1            | 1           | 1          |

1. Refer to Table 7 on page 9 for LED/CFG pin assignments.



## Establishing Link

See [Figure 7](#) for an overview of link establishment.

### Auto-Negotiation

If not configured for forced operation, the LXT972 attempts to auto-negotiate with its link partner by sending Fast Link Pulse (FLP) bursts. Each burst consists of up to 33 link pulses spaced 62.5  $\mu$ s apart. Odd link pulses (clock pulses) are always present. Even link pulses (data pulses) may be present or absent to indicate a “1” or a “0”. Each FLP burst exchanges 16 bits of data, which are referred to as a “link code word”. All devices that support auto-negotiation must implement the “Base Page” defined by IEEE 802.3 (registers 4 and 5). LXT972 also supports the optional “Next Page” function as described in [Tables 44 and 45](#) (registers 7 and 8).

### Base Page Exchange

By exchanging Base Pages, the LXT972 and its link partner communicate their capabilities to each other. Both sides must receive at least three identical base pages for negotiation to continue. Each side identifies the highest common capabilities that both sides support and configures itself accordingly.

### Next Page Exchange

Additional information, above that required by base page exchange, is also sent via “Next Pages”. The LXT972 fully supports the IEEE 802.3ab method of negotiation via Next Page exchange.

### Controlling Auto-Negotiation

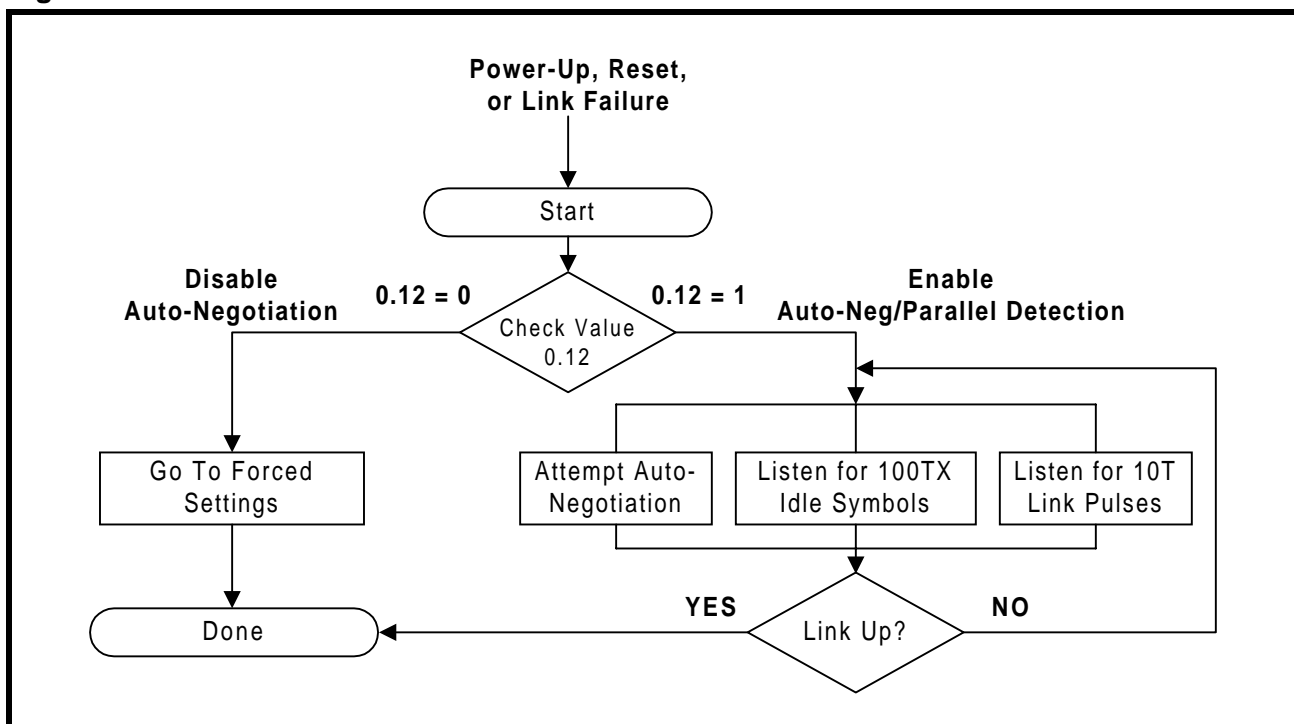
When auto-negotiation is controlled by software, the following steps are recommended:

- After power-up, power-down, or reset, the power-down recovery time, as specified in [Table 34 on page 47](#), must be exhausted before proceeding.
- Set the auto-negotiation advertisement register bits.
- Enable auto-negotiation (set MDIO bit 0.12 = 1).

### Parallel Detection

For the parallel detection feature of auto-negotiation, the LXT972 also monitors for 10BASE-T Normal Link Pulses (NLP) and 100BASE-TX Idle symbols. If either is detected, the device automatically reverts to the corresponding operating mode. Parallel detection allows the LXT972 to communicate with devices that do not support auto-negotiation.

**Figure 7: Link Establishment Overview**



## MII Operation

The LXT972 device implements the Media Independent Interface (MII) as defined in the IEEE 802.3 standard. Separate channels are provided for transmitting data from the MAC to the LXT972 (TXD), and for passing data received from the line (RXD) to the MAC. Each channel has its own clock, data bus, and control signals. Nine signals are used to pass received data to the MAC: RXD<3:0>, RX\_CLK, RX\_DV, RX\_ER, COL, and CRS. Seven signals are used to transmit data from the MAC: TXD<3:0>, TX\_CLK, TX\_EN, and TX\_ER.

The LXT972 supplies both clock signals as well as separate outputs for carrier sense and collision. Data transmission across the MII is normally implemented in 4-bit-wide nibbles.

### MII Clocks

The LXT972 is the master clock source for data transmission and supplies both MII clocks (RX\_CLK and TX\_CLK). It automatically sets the clock speeds to match link conditions. When the link is operating at 100 Mbps, the clocks are set to 25 MHz. When the link is operating at 10 Mbps, the clocks are set to 2.5 MHz. [Figures 8 through 10](#) show the clock cycles for each mode. The transmit data and control signals must always be synchronized to TX\_CLK by the MAC. The LXT972 samples these signals on the rising edge of TX\_CLK.

### Transmit Enable

The MAC must assert TX\_EN the same time as the first nibble of preamble, and de-assert TX\_EN after the last bit of the packet.

### Receive Data Valid

The LXT972 asserts RX\_DV when it receives a valid packet. Timing changes depend on line operating speed:

- For 100TX links, RX\_DV is asserted from the first nibble of preamble to the last nibble of the data packet.
- For 10BT links, the entire preamble is truncated. RX\_DV is asserted with the first nibble of the Start of Frame Delimiter (SFD) “5D” and remains asserted until the end of the packet.

## Carrier Sense

Carrier sense (CRS) is an asynchronous output. It is always generated when a packet is received from the line and in half-duplex when a packet is transmitted.

Carrier sense is not generated when a packet is transmitted and in full-duplex mode. [Table 9](#) summarizes the conditions for assertion of carrier sense, collision, and data loopback signals.

## Error Signals

When LXT972 is in 100 Mbps mode and receives an invalid symbol from the network, it asserts RX\_ER and drives “1110” on the RXD pins.

When the MAC asserts TX\_ER, the LXT972 will drive “H” symbols out on the TPOP/N pins.

## Collision

The LXT972 asserts its collision signal, asynchronously to any clock, whenever the line state is half-duplex and the transmitter and receiver are active at the same time. [Table 9](#) summarizes the conditions for assertion of carrier sense, collision, and data loopback signals.

Figure 8: 10BASE-T Clocking

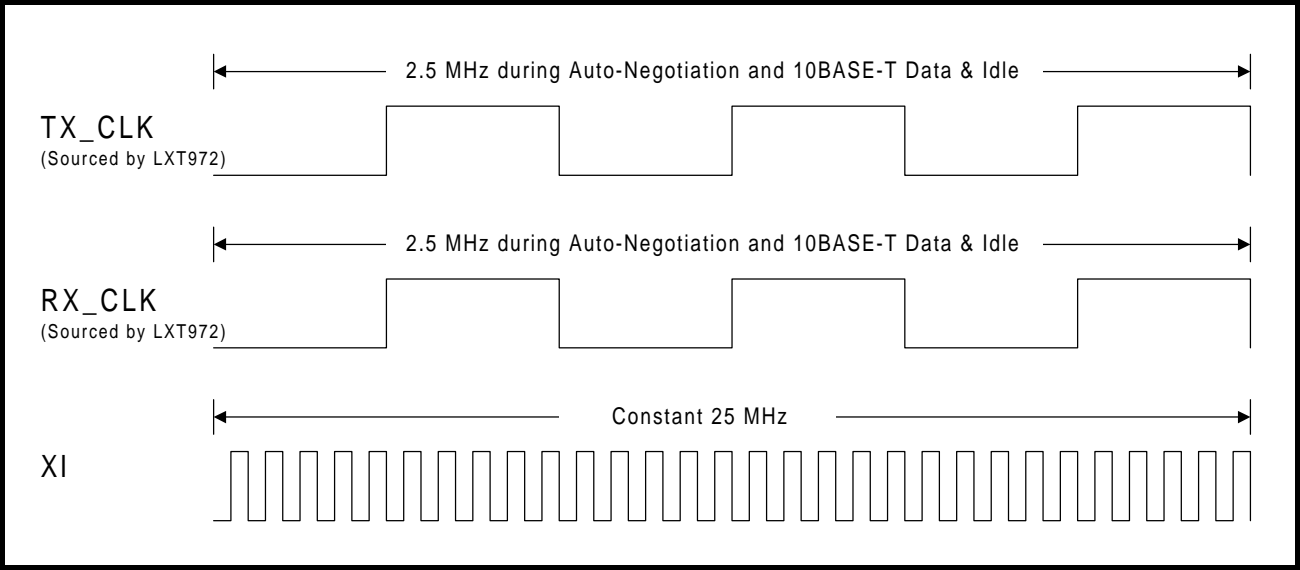


Figure 9: 100BASE-X Clocking

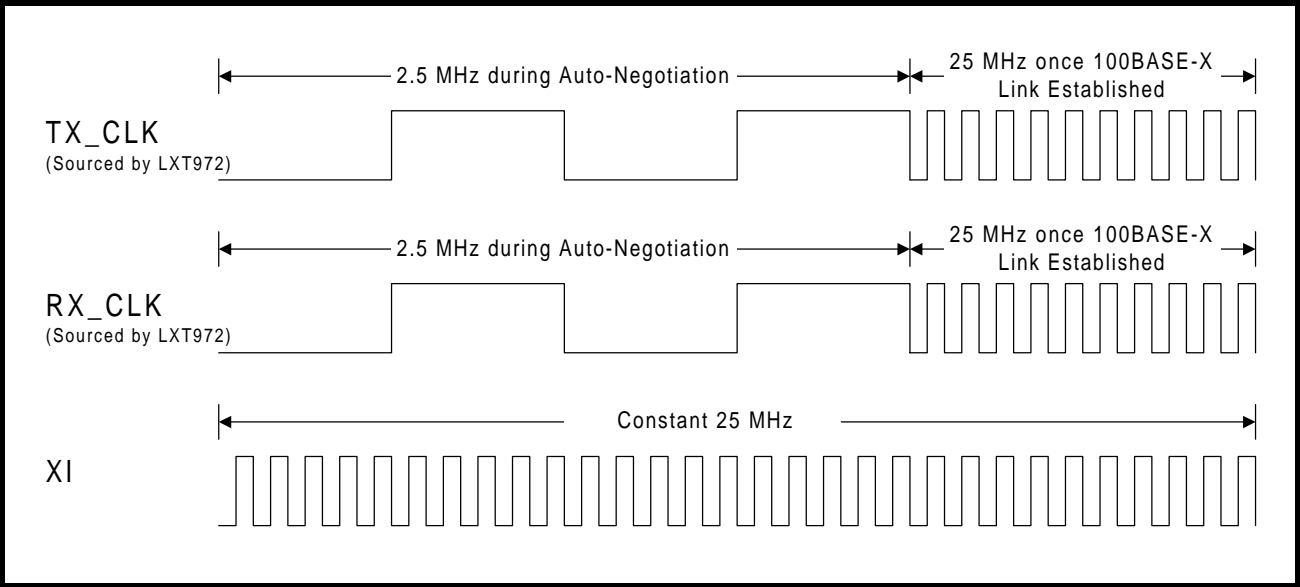
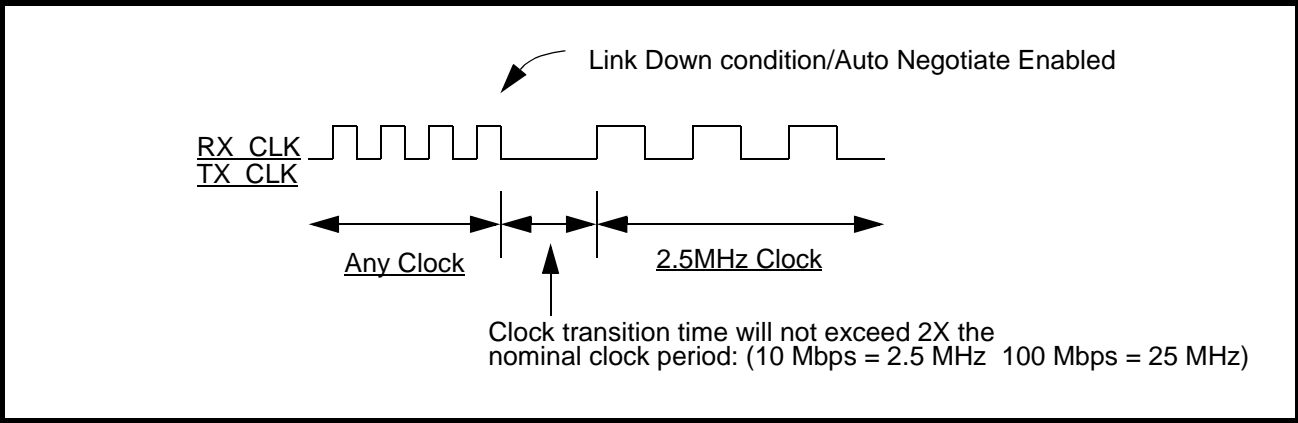


Figure 10: Link Down Clock Transition



### Loopback

The LXT972 provides two loopback functions, operational and test (see Table 9). Loopback paths are shown in Figure 11.

#### Operational Loopback

Operational loopback is provided for 10 Mbps half-duplex links when bit 16.8 = 0. Data transmitted by the MAC (TXData) will be looped back on the receive side of the MII (RXData). Operational loopback is not provided for 100 Mbps links, full-duplex links, or when 16.8 = 1.

#### Test Loopback

A test loopback function is provided for diagnostic testing of the LXT972. During test loopback, the twisted-pair interface is disabled. Data transmitted by the MAC is internally looped back by the LXT972 and returned to the MAC.

Test loopback is available for both 100TX and 10T operation. Test loopback is enabled by setting bits as follows:

- 0.14 = 1
- 0.8 = 1 (full-duplex)
- 0.12 = 0 (disable auto-negotiation).

Figure 11: Loopback Paths

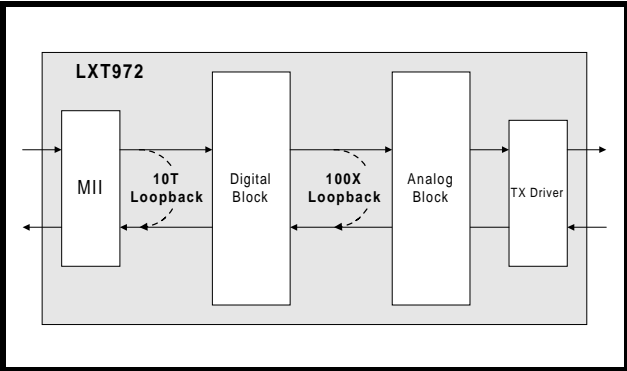


Table 9: Carrier Sense, Loopback, and Collision Conditions

| Speed    | Duplex Condition      | Carrier Sense       | Test <sup>1</sup> Loopback | Operational Loopback | Collision            |
|----------|-----------------------|---------------------|----------------------------|----------------------|----------------------|
| 100 Mbps | Full-Duplex           | Receive Only        | Yes                        | No                   | None                 |
|          | Half-Duplex           | Transmit or Receive | No                         | No                   | Transmit and Receive |
| 10 Mbps  | Full-Duplex           | Receive Only        | Yes                        | No                   | None                 |
|          | Half-Duplex, 16.8 = 0 | Transmit or Receive | Yes                        | Yes                  | Transmit and Receive |
|          | Half-Duplex, 16.8 = 1 | Transmit or Receive | No                         | No                   | Transmit and Receive |

1. Test Loopback is enabled when 0.14 = 1

# 100 Mbps Operation

## 100BASE-X Network Operations

During 100BASE-X operation, the LXT972 transmits and receives 5-bit symbols across the network link. [Figure 12](#) shows the structure of a standard frame packet. When the MAC is not actively transmitting data, the LXT972 sends out Idle symbols on the line.

In 100TX mode, the LXT972 scrambles and transmits the data to the network using MLT-3 line code ([Figure 13 on page 22](#)). MLT-3 signals received from the network are descrambled, decoded, and sent across the MII to the MAC.

Figure 12: 100BASE-X Frame Format

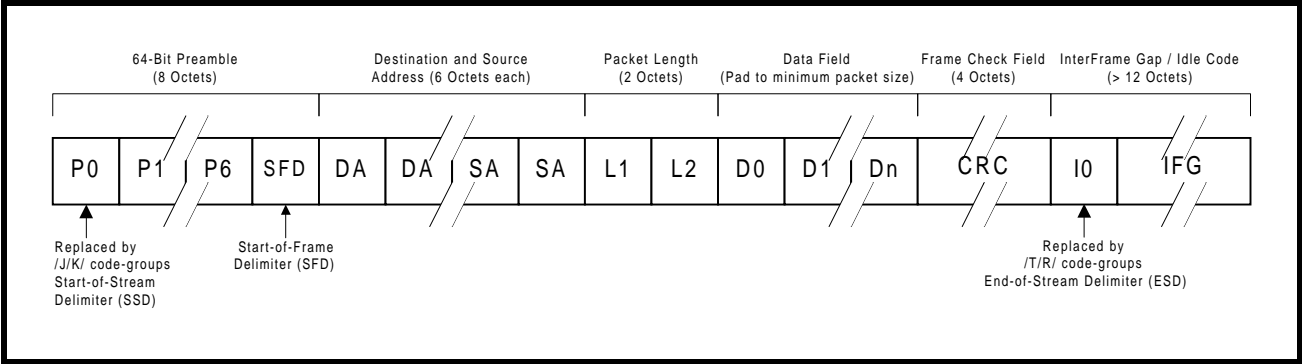
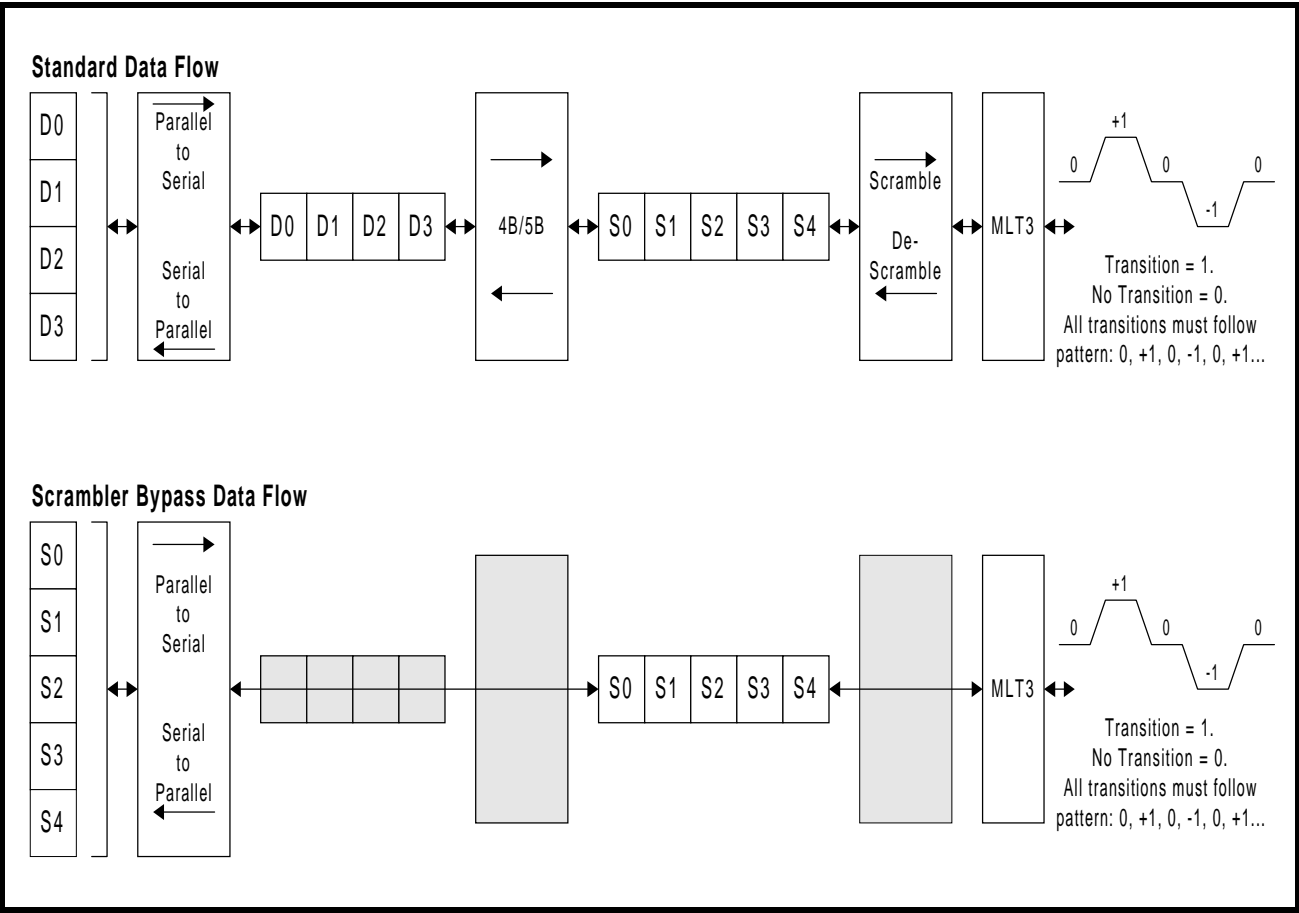


Figure 13: 100BASE-TX Data Path

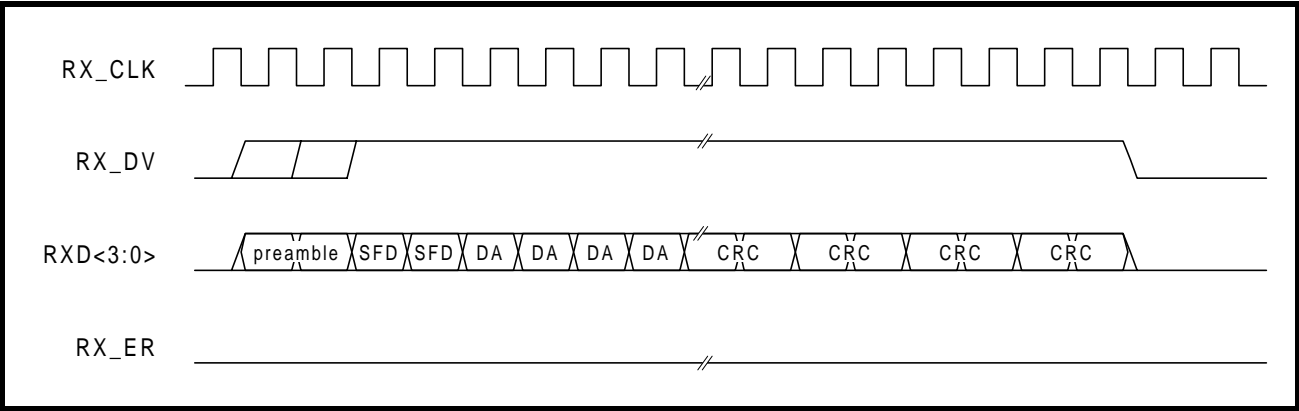


As shown in [Figure 12 on page 21](#), the MAC starts each transmission with a preamble pattern. As soon as the LXT972 detects the start of preamble, it transmits a Start-of-Stream Delimiter (SSD, symbols J and K) to the network. It then encodes and transmits the rest of the packet, including the balance of the preamble, the SFD, packet data, and CRC.

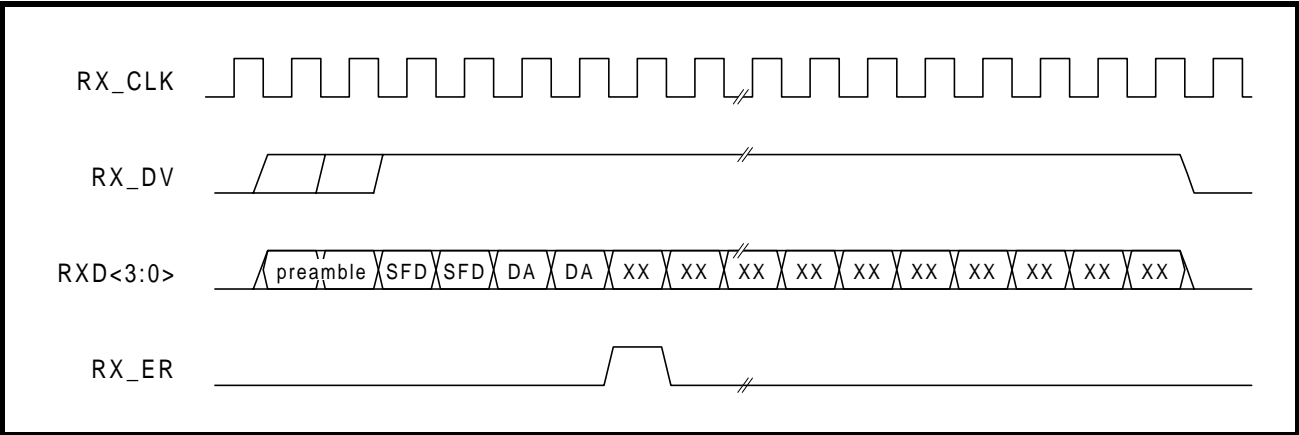
Once the packet ends, the LXT972 transmits the End-of-Stream-Delimiter (ESD, symbols T and R) and then returns to transmitting Idle symbols. 4B/5B coding is shown in [Table 10 on page 26](#).

[Figure 14](#) shows normal reception with no errors. When the LXT972 receives invalid symbols from the line, it asserts RX\_ER as shown in [Figure 15](#).

**Figure 14: 100BASE-TX Reception with no Errors**



**Figure 15: 100BASE-TX Reception with Invalid Symbol**



### Collision Indication

Figure 16 shows normal transmission. Upon detection of a collision, the COL output is asserted and remains asserted for the duration of the collision as shown in Figure 17.

Figure 16: 100BASE-TX Transmission with no Errors

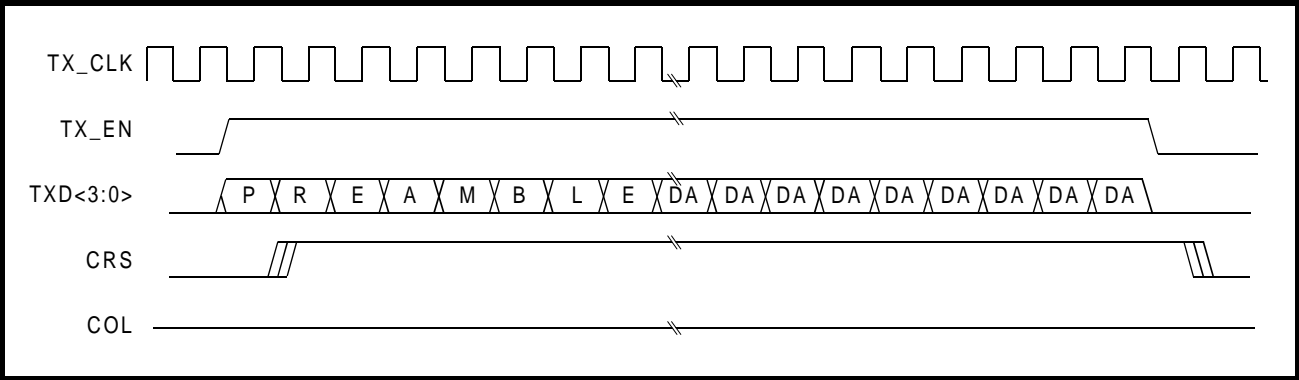
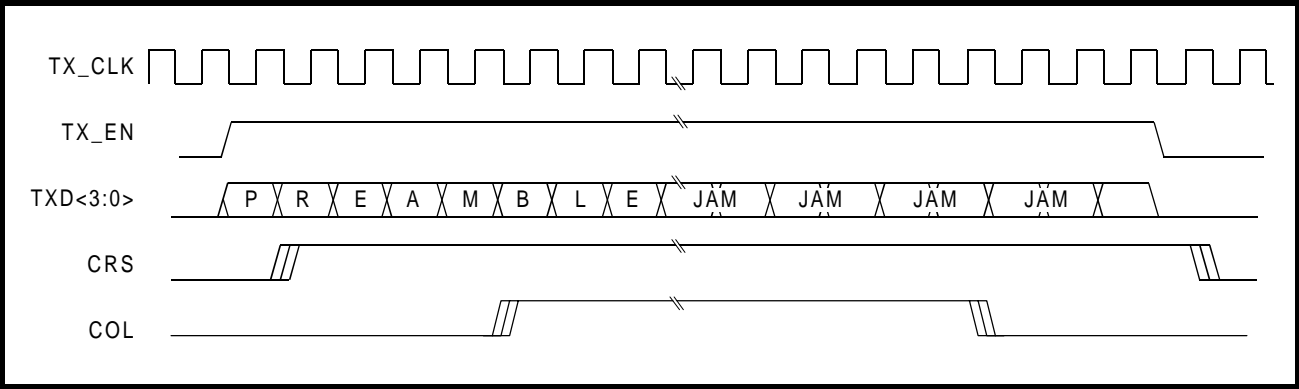


Figure 17: 100BASE-TX Transmission with Collision





## 100BASE-X Protocol Sublayer Operations

With respect to the 7-layer communications model, the LXT972 is a Physical Layer 1 (PHY) device. The LXT972 implements the Physical Coding Sublayer (PCS), Physical Medium Attachment (PMA), and Physical Medium Dependent (PMD) sublayers of the reference model defined by the IEEE 802.3u standard. The following paragraphs discuss LXT972 operation from the reference model point of view.

### PCS Sublayer

The Physical Coding Sublayer (PCS) provides the MII interface, as well as the 4B/5B encoding/decoding function.

For 100TX operation, the PCS layer provides IDLE symbols to the PMD-layer line driver as long as TX\_EN is de-asserted.

### Preamble Handling

When the MAC asserts TX\_EN, the PCS substitutes a /J/K symbol pair, also known as the Start-of-Stream Delimiter (SSD), for the first two nibbles received across the MII. The PCS layer continues to encode the remaining MII data, following the coding in [Table 10 on page 26](#), until TX\_EN is de-asserted. It then returns to supplying IDLE symbols to the line driver.

In the receive direction, the PCS layer performs the opposite function, substituting two preamble nibbles for the SSD.

### Dribble Bits

The LXT972 handles dribble bits in all modes. If between 1-4 dribble bits are received, the nibble will be passed across the MII, padded with 1s if necessary. If between 5-7 dribble bits are received, the second nibble will not be sent onto the MII bus.

**Figure 18: Protocol Sublayers**

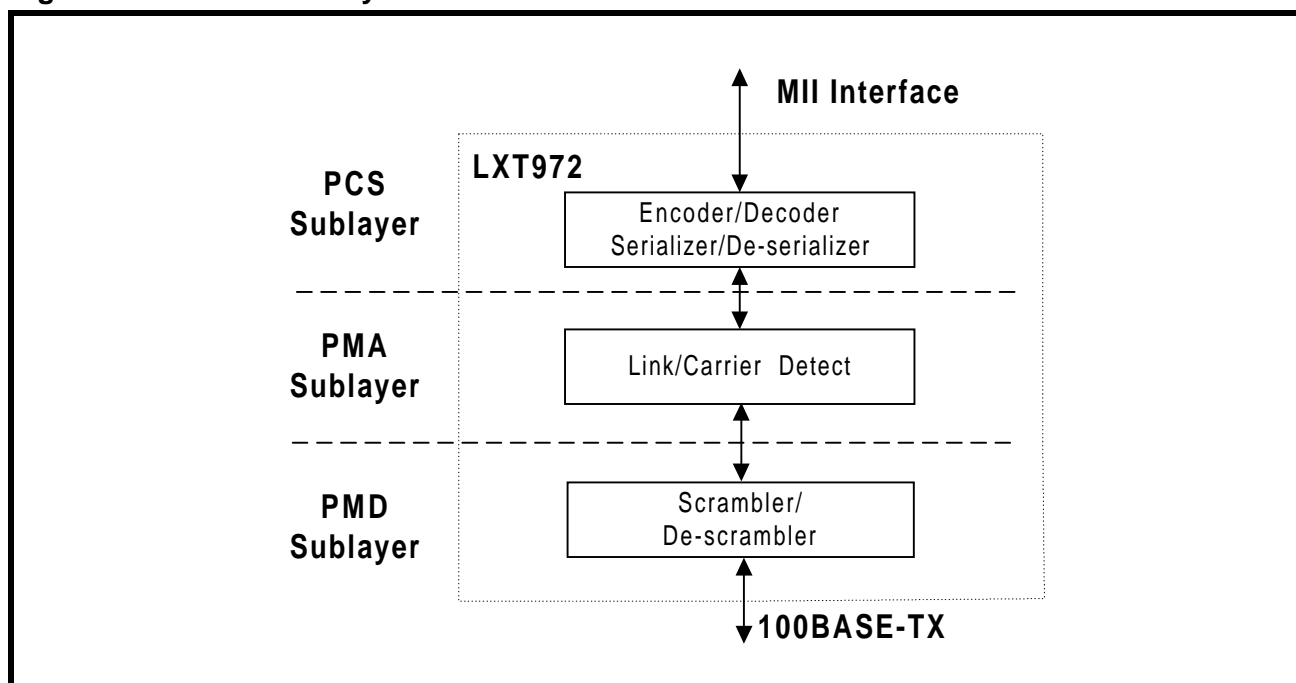


Table 10: 4B/5B Coding

| Code Type | 4B Code<br>3 2 1 0 | Name           | 5B Code<br>4 3 2 1 0 | Interpretation                                 |
|-----------|--------------------|----------------|----------------------|--|
| DATA      | 0 0 0 0            | 0              | 1 1 1 1 0            | Data 0   |
|           | 0 0 0 1            | 1              | 0 1 0 0 1            | Data 1   |
|           | 0 0 1 0            | 2              | 1 0 1 0 0            | Data 2   |
|           | 0 0 1 1            | 3              | 1 0 1 0 1            | Data 3   |
|           | 0 1 0 0            | 4              | 0 1 0 1 0            | Data 4   |
|           | 0 1 0 1            | 5              | 0 1 0 1 1            | Data 5   |
|           | 0 1 1 0            | 6              | 0 1 1 1 0            | Data 6   |
|           | 0 1 1 1            | 7              | 0 1 1 1 1            | Data 7   |
|           | 1 0 0 0            | 8              | 1 0 0 1 0            | Data 8   |
|           | 1 0 0 1            | 9              | 1 0 0 1 1            | Data 9   |
|           | 1 0 1 0            | A              | 1 0 1 1 0            | Data A   |
|           | 1 0 1 1            | B              | 1 0 1 1 1            | Data B   |
|           | 1 1 0 0            | C              | 1 1 0 1 0            | Data C   |
|           | 1 1 0 1            | D              | 1 1 0 1 1            | Data D   |
|           | 1 1 1 0            | E              | 1 1 1 0 0            | Data E   |
|           | 1 1 1 1            | F              | 1 1 1 0 1            | Data F   |
| IDLE      | undefined          | I <sup>1</sup> | 1 1 1 1 1            | Idle. Used as inter-stream fill code           |
| CONTROL   | 0 1 0 1            | J <sup>2</sup> | 1 1 0 0 0            | Start-of-Stream Delimiter (SSD), part 1 of 2   |
|           | 0 1 0 1            | K <sup>2</sup> | 1 0 0 0 1            | Start-of-Stream Delimiter (SSD), part 2 of 2   |
|           | undefined          | T <sup>3</sup> | 0 1 1 0 1            | End-of-Stream Delimiter (ESD), part 1 of 2     |
|           | undefined          | R <sup>3</sup> | 0 0 1 1 1            | End-of-Stream Delimiter (ESD), part 2 of 2     |
| INVALID   | undefined          | H <sup>4</sup> | 0 0 1 0 0            | Transmit Error. Used to force signaling errors |
|           | undefined          | Invalid        | 0 0 0 0 0            | Invalid  |
|           | undefined          | Invalid        | 0 0 0 0 1            | Invalid  |
|           | undefined          | Invalid        | 0 0 0 1 0            | Invalid  |
|           | undefined          | Invalid        | 0 0 0 1 1            | Invalid  |
|           | undefined          | Invalid        | 0 0 1 0 1            | Invalid  |
|           | undefined          | Invalid        | 0 0 1 1 0            | Invalid  |
|           | undefined          | Invalid        | 0 1 0 0 0            | Invalid  |
|           | undefined          | Invalid        | 0 1 1 0 0            | Invalid  |
|           | undefined          | Invalid        | 1 0 0 0 0            | Invalid  |
|           | undefined          | Invalid        | 1 1 0 0 1            | Invalid  |

1. The /I/ (Idle) code group is sent continuously between frames.  
 2. The /J/ and /K/ (SSD) code groups are always sent in pairs; /K/ follows /J/.  
 3. The /T/ and /R/ (ESD) code groups are always sent in pairs; /R/ follows /T/.  
 4. An /H/ (Error) code group is used to signal an error condition.

## PMA Sublayer

### Link

In 100 Mbps mode, the LXT972 establishes a link whenever the scrambler becomes locked and remains locked for approximately 50 ms. Whenever the scrambler loses lock (receiving less than 12 consecutive idle symbols during a 2 ms window), the link will be taken down. This provides a very robust link, essentially filtering out any small noise hits that may otherwise disrupt the link. Furthermore 100M idle patterns will not bring up a 10M link.

The LXT972 reports link failure via the MII status bits (1.2 and 17.10) and interrupt functions. If auto-negotiation is enabled, link failure causes the LXT972 to re-negotiate.

### Link Failure Override

The LXT972 will normally transmit data packets only if it detects the link is up. Setting bit 16.14 = 1 overrides this function, allowing the LXT972 to transmit data packets even when the link is down. This feature is provided as a diagnostic tool. Note that auto-negotiation must be disabled to transmit data packets in the absence of link. If auto-negotiation is enabled, the LXT972 will automatically transmit FLP bursts if the link is down.

### Carrier Sense

For 100TX links, a start-of-stream delimiter (SSD) or /J/K symbol pair causes assertion of carrier sense (CRS). An end-of-stream delimiter (ESD) or /T/R symbol pair causes de-assertion of CRS. The PMA layer will also de-assert CRS if IDLE symbols are received without /T/R; however, in this case RX\_ER will be asserted for one clock cycle when CRS is de-asserted.

Usage of CRS for Interframe Gap (IFG) timing is *not* recommended for the following reasons:

- De-assertion time for CRS is slightly longer than assertion time. This causes IFG intervals to appear somewhat shorter to the MAC than it actually is on the wire.
- CRS de-assertion is not aligned with TX\_EN de-assertion on transmit loopbacks in half-duplex mode.

### Receive Data Valid

The LXT972 asserts RX\_DV to indicate that the received data maps to valid symbols. However, RXD outputs zeros until the received data is decoded and available for transfer to the controller.

## Twisted-Pair PMD Sublayer

The twisted-pair Physical Medium Dependent (PMD) layer provides the signal scrambling and descrambling, line coding and decoding (MLT-3 for 100TX, Manchester for 10T), as well as receiving, polarity correction, and baseline wander correction functions.

### Scrambler/Descrambler

The purpose of the scrambler is to spread the signal power spectrum and further reduce EMI using an 11-bit, data-independent polynomial. The receiver automatically decodes the polynomial whenever IDLE symbols are received.

**Scrambler Seeding.** Once the transmit data (or Idle symbols) are properly encoded, they are scrambled to further reduce EMI and to spread the power spectrum using an 11-bit scrambler seed. Five seed bits are determined by the PHY address, and the remaining bits are hard coded in the design.

**Scrambler Bypass.** The scrambler/descrambler can be bypassed by setting bit 16.12 = 1. Scrambler bypass is provided for diagnostic and test support.

### Baseline Wander Correction

The LXT972 provides a baseline wander correction function which makes the device robust under all network operating conditions. The MLT3 coding scheme used in 100BASE-TX is by definition “unbalanced”. This means that the average value of the signal voltage can “wander” significantly over short time intervals (tenths of seconds). This wander can cause receiver errors at long-line lengths (100 meters) in less robust designs. Exact characteristics of the wander are completely data dependent.

The LXT972 baseline wander correction characteristics allow the device to recover error-free data while receiving worst-case “killer” packets over all cable lengths.

### Polarity Correction

The 100BASE-TX descrambler automatically detects and corrects for the condition where the receive signal at TPIP and TPIN is inverted.

### Programmable Slew Rate Control

The LXT972 device supports a slew rate mechanism whereby one of four pre-selected slew rates can be used. This allows the designer to optimize the output waveform to match the characteristics of the magnetics. The slew rate is determined by the TxSLEW pins as shown in [Table 4 on page 8](#).

## 10 Mbps Operation

The LXT972 operates as a standard 10BASE-T transceiver. The LXT972 supports all the standard 10 Mbps functions. During 10BASE-T (10T) operation, the LXT972 transmits and receives Manchester-encoded data across the network link. When the MAC is not actively transmitting data, the LXT972 drives link pulses onto the line.

In 10T mode, the polynomial scrambler/descrambler is inactive. Manchester-encoded signals received from the network are decoded by the LXT972 and sent across the MII to the MAC.

### 10T Preamble Handling

The LXT972 offers two options for preamble handling, selected by bit 16.5. In 10T Mode when 16.5 = 0, the LXT972 strips the entire preamble off of received packets. CRS is asserted coincident with SFD. RX\_DV is held Low for the duration of the preamble. When RX\_DV is asserted, the very first two nibbles driven by the LXT972 are the SFD “5D” hex followed by the body of the packet.

In 10T mode with 16.5 = 1, the LXT972 passes the preamble through the MII and asserts RX\_DV and CRS simultaneously. In 10T loopback, the LXT972 loops back whatever the MAC transmits to it, including the preamble.

### 10T Carrier Sense

For 10T links, CRS assertion is based on reception of valid preamble, and de-assertion on reception of an end-of-frame (EOF) marker. Bit 16.7 allows CRS de-assertion to be synchronized with RX\_DV de-assertion. Refer to [Table 46 on page 58](#).

### 10T Dribble Bits

The LXT972 device handles dribbles bits in all modes. If between 1-4 dribble bits are received, the nibble will be passed across the MII, padded with 1s if necessary. If between 5-7 dribble bits are received, the second nibble will not be sent onto the MII bus.

## 10T Link Integrity Test

In 10T mode, the LXT972 always transmits link pulses. When the Link Integrity Test function is enabled (the normal configuration), it monitors the connection for link pulses. Once link pulses are detected, data transmission will be enabled and will remain enabled as long as either the link pulses or data transmission continue. If the link pulses stop, the data transmission will be disabled.

If the Link Integrity Test function is disabled, the LXT972 will transmit to the connection regardless of detected link pulses. The Link Integrity Test function can be disabled by setting bit 16.14 = 1.

### Link Failure

Link failure occurs if Link Integrity Test is enabled and link pulses or packets stop being received. If this condition occurs, the LXT972 returns to the auto-negotiation phase if auto-negotiation is enabled. If the Link Integrity Test function is disabled by setting 16.14 = 1 in the Configuration Register, the LXT972 will transmit packets, regardless of link status.

## 10T SQE (Heartbeat)

By default, the Signal Quality Error (SQE) or heartbeat function is disabled on the LXT972. To enable this function, set bit 16.9 = 1. When this function is enabled, the LXT972 will assert its COL output for 5-15 BT after each packet. See [Figure 28 on page 44](#) for SQE timing parameters.

## 10T Jabber

If a transmission exceeds the jabber timer, the LXT972 will disable the transmit and loopback functions. See [Figure 27 on page 44](#) for jabber timing parameters.

The LXT972 automatically exits jabber mode after the unjabber time has expired. This function can be disabled by setting bit 16.10 = 1.

## 10T Polarity Correction

The LXT972 automatically detects and corrects for the condition where the receive signal (TPIP/N) is inverted. Reversed polarity is detected if eight inverted link pulses, or four inverted end-of-frame (EOF) markers, are received consecutively. If link pulses or data are not received by the maximum receive time-out period (96-128 ms), the polarity state is reset to a non-inverted state.

## Monitoring Operations

### Monitoring Auto-Negotiation

Auto-negotiation can be monitored as follows:

- Bit 17.7 is set to 1 once the Auto-Negotiation process is completed.
- Bits 1.2 and 17.10 are set to 1 once the link is established.
- Bits 17.14 and 17.9 can be used to determine the link operating conditions (speed and duplex).

### Monitoring Next Page Exchange

The LXT972 offers an Alternate Next Page mode to simplify the next page exchange process. Normally, bit 6.1 (Page Received) remains set until read. When Alternate Next Page mode is enabled (16.1 = 1), bit 6.1 is automatically cleared whenever a new negotiation process takes place. This prevents the user from reading an old value in 6.1 and assuming that Registers 5 and 8 (Partner Ability) contain valid information. Additionally, the LXT972 uses bit 6.5 to indicate when the current received page is the base page. This information is useful for recognizing when next pages must be resent due to a new negotiation process starting. Bits 6.1 and 6.5 are cleared when read.

### LED Functions

The LXT972 incorporates three direct LED drivers. On power up all the drivers are asserted for approximately 1 second after reset de-asserts. Each LED driver can be programmed using the LED Configuration Register (refer to [Table 50 on page 62](#)) to indicate one of the following conditions:

- Operating Speed
- Transmit Activity
- Receive Activity
- Collision Condition
- Link Status
- Duplex Mode

The LED drivers can also be programmed to display various combined status conditions. For example, setting bits 20.15:12 = 1101 produces the following combination of Link and Activity indications:

- If Link is down LED is off.
- If Link is up LED is on.
- If Link is up and activity is detected, the LED will blink at the stretch interval selected by bits 20.3:2 and will continue to blink as long as activity is present.

The LED driver pins also provide initial configuration settings. The LED pins are sensitive to polarity and will automatically pull up or pull down to configure for either open drain or open source circuits (10 mA Max current rating) as required by the hardware configuration. Refer to the discussion of “[Hardware Configuration Settings](#)” on [page 16](#) for details.

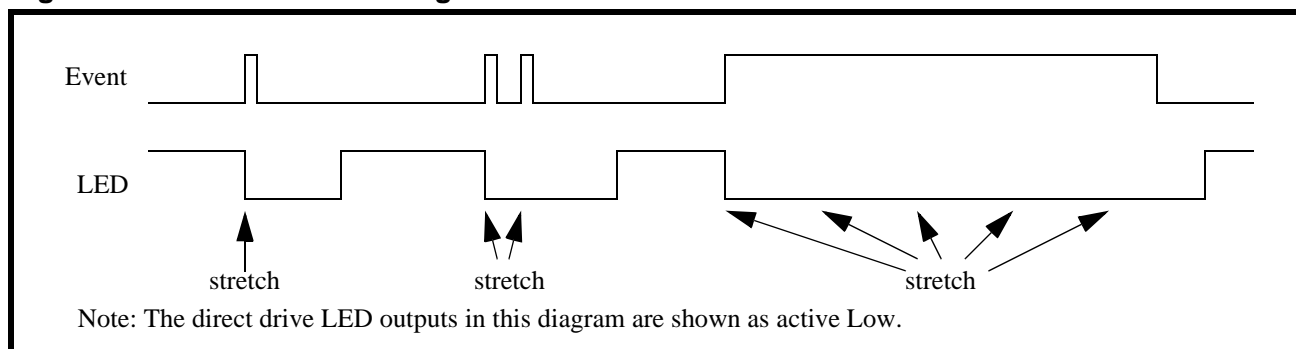
### LED Pulse Stretching

The LED Configuration Register also provides optional LED pulse stretching to 30, 60, or 100 ms. If during this pulse stretch period, the event occurs again, the pulse stretch time will be further extended.

When an event such as receiving a packet occurs it will be edge detected and it will start the stretch timer. The LED driver will remain asserted until the stretch timer expires. If another event occurs before the stretch timer expires then the stretch timer will be reset and the stretch time will be extended.

When a long event (such as duplex status) occurs it will be edge detected and it will start the stretch timer. When the stretch timer expires the edge detector will be reset so that a long event will cause another pulse to be generated from the edge detector which will reset the stretch timer and cause the LED driver to remain asserted. [Figure 19](#) shows how the stretch operation functions.

**Figure 19: LED Pulse Stretching**



## Boundary Scan (JTAG1149.1) Functions

LXT972 includes a IEEE 1149.1 boundary scan test port for board level testing. All digital input, output, and input/output pins are accessible. *The BSDL file is available by contacting your local sales office (see the back page) or by accessing the Level One website (www.level1.com).*

### Boundary Scan Interface

This interface consists of five pins (TMS, TDI, TDO, TRST, and TCK). It includes a state machine, data register array, and instruction register. The TMS and TDI pins are internally pulled up. TCK is internally pulled down. TDO does not have an internal pull-up or pull-down.

### State Machine

The TAP controller is a 16 state machine driven by the TCK and TMS pins. Upon reset the TEST\_LOGIC\_RESET state is entered. The state machine is also reset when TMS and TDI are high for five TCK periods.

### Instruction Register

After the state machine resets, the IDCODE instruction is always invoked. The decode logic ensures the correct data flow to the Data registers according to the current instruction. Valid instructions are listed in [Table 12](#).

### Boundary Scan Register (BSR)

Each Boundary Scan Register (BSR) cell has two stages. A flip-flop and a latch are used for the serial shift stage and the parallel output stage. There are four modes of operation as listed in [Table 11](#).

**Table 11: BSR Mode of Operation**

| Mode | Description     |
|------|-----------------|
| 1    | Capture         |
| 2    | Shift           |
| 3    | Update          |
| 4    | System Function |

**Table 12: Supported JTAG Instructions**

| Name   | Code | Description             | Mode   | Data Register |
|--------|------|-------------------------|--------|---------------|
| EXTEST | 0000 | External Test           | Test   | BSR           |
| IDCODE | 0001 | ID Code Inspection      | Normal | ID REG        |
| SAMPLE | 0010 | Sample Boundary         | Normal | BSR           |
| TRIBYP | 0011 | Force Float             | Normal | Bypass        |
| SETBYP | 0100 | Control Boundary to 1/0 | Test   | Bypass        |
| BYPASS | 1111 | Bypass Scan             | Normal | Bypass        |

**Table 13: Device ID Register**

| 31:28   | 27:12         | 11:8                          | 7:1                   | 0        |
|---------|---------------|-------------------------------|-----------------------|----------|
| Version | Part ID (hex) | Jedec Continuation Characters | JEDEC ID <sup>1</sup> | Reserved |
| 0001    | 03CB          | 1110                          | 111 1110              | 1        |

1. The JEDEC IS is an 8-bit identifier. The MSB is for parity and is ignored. Level One's JEDEC ID is FE (1111 1110) which becomes 111 1110

## APPLICATION INFORMATION

### Magnetics Information

The LXT972 requires a 1:1 ratio for both the receive and transmit transformers. The transformer isolation voltage should be rated at 2 kV to protect the circuitry from static voltages across the connectors and cables. Refer to [Table 14](#) for transformer requirements.

A cross-reference list of magnetic manufacturers and part numbers is available in Application Note 073, Magnetic Manufacturers, which can be found on the Level One web site ([www.level1.com](http://www.level1.com)). Before committing to a specific component, designers should contact the manufacturer for current product specifications, and validate the magnetics for the specific application.

**Table 14: Magnetics Requirements**

| Parameter                             | Min | Nom   | Max | Units | Test Condition |
|---------------------------------------|-----|-------|-----|-------|----------------|
| Rx turns ratio                        | –   | 1 : 1 | –   | –     |                |
| Tx turns ratio                        | –   | 1 : 1 | –   | –     |                |
| Insertion loss                        | 0.0 | 0.6   | 1.1 | dB    |                |
| Primary inductance                    | 350 | –     | –   | μH    |                |
| Transformer isolation                 | –   | 1.5   | –   | kV    |                |
| Differential to common mode rejection | 40  | –     | –   | dB    | .1 to 60 MHz   |
|                                       | 35  | –     | –   | dB    | 60 to 100 MHz  |
| Return Loss                           | -16 | –     | –   | dB    | 30 MHz         |
|                                       | -10 | –     | –   | dB    | 80 MHz         |

### Typical Twisted-Pair Interface

[Table 15](#) provides a comparison of the RJ-45 connections for NIC and switch applications in a typical twisted-pair interface setting.

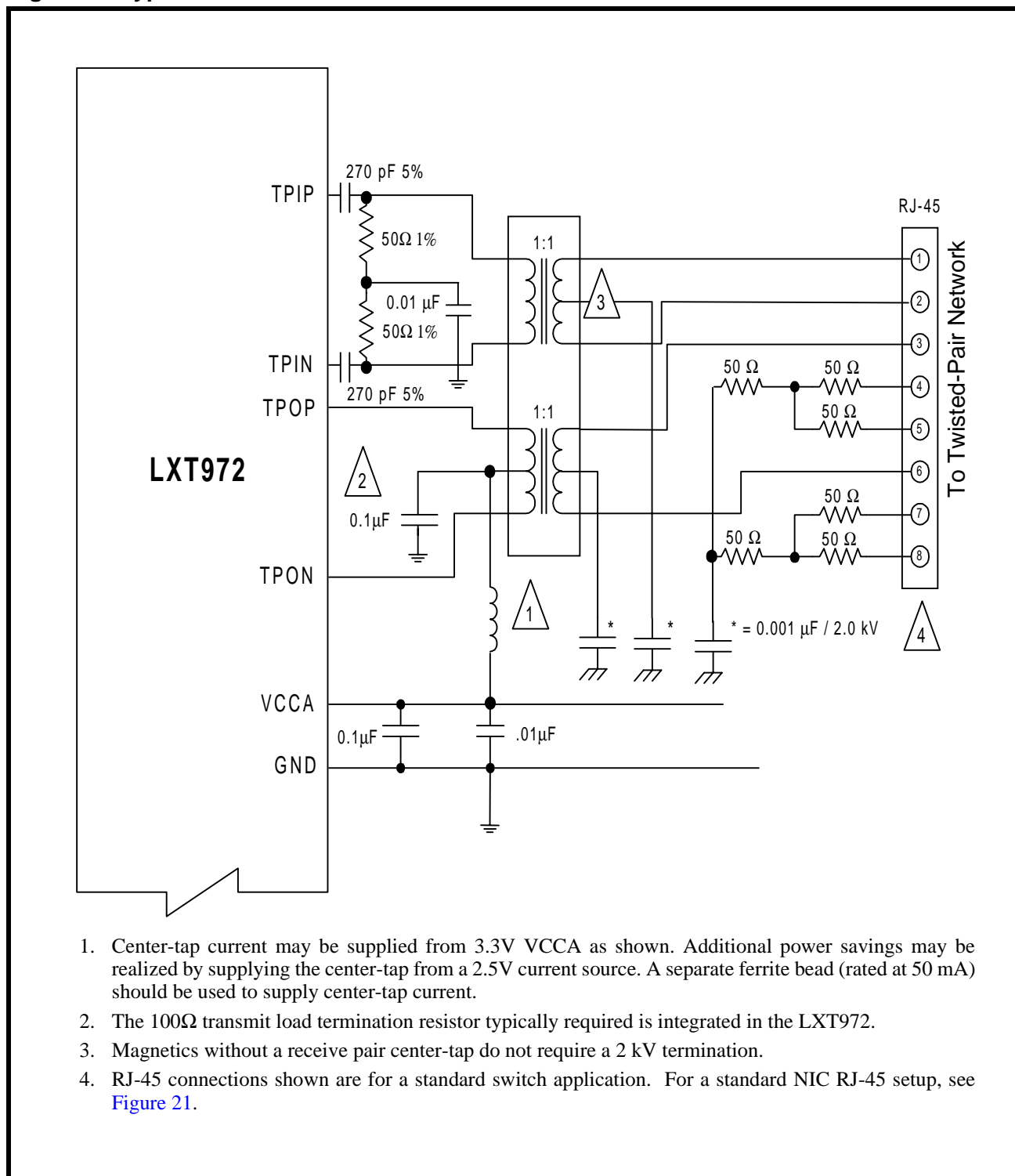
[Figure 20 on page 33](#) shows a typical twisted-pair interface with the RJ-45 connections crossed over for a switch configuration. [Figure 21 on page 34](#) provides a typical twisted-pair interface with the RJ-45 connections configured for a NIC application.

**Table 15: RJ-45 Pin Comparison of NIC and Switch Twisted-Pair Interfaces**

| Symbol | RJ-45  |     |
|--------|--------|-----|
|        | Switch | NIC |
| TPIP   | 1      | 3   |
| TPIN   | 2      | 6   |
| TPOP   | 3      | 1   |
| TPON   | 6      | 2   |



### Figure 20: Typical Twisted-Pair Interface - Switch



### Figure 21: Typical Twisted-Pair Interface - NIC

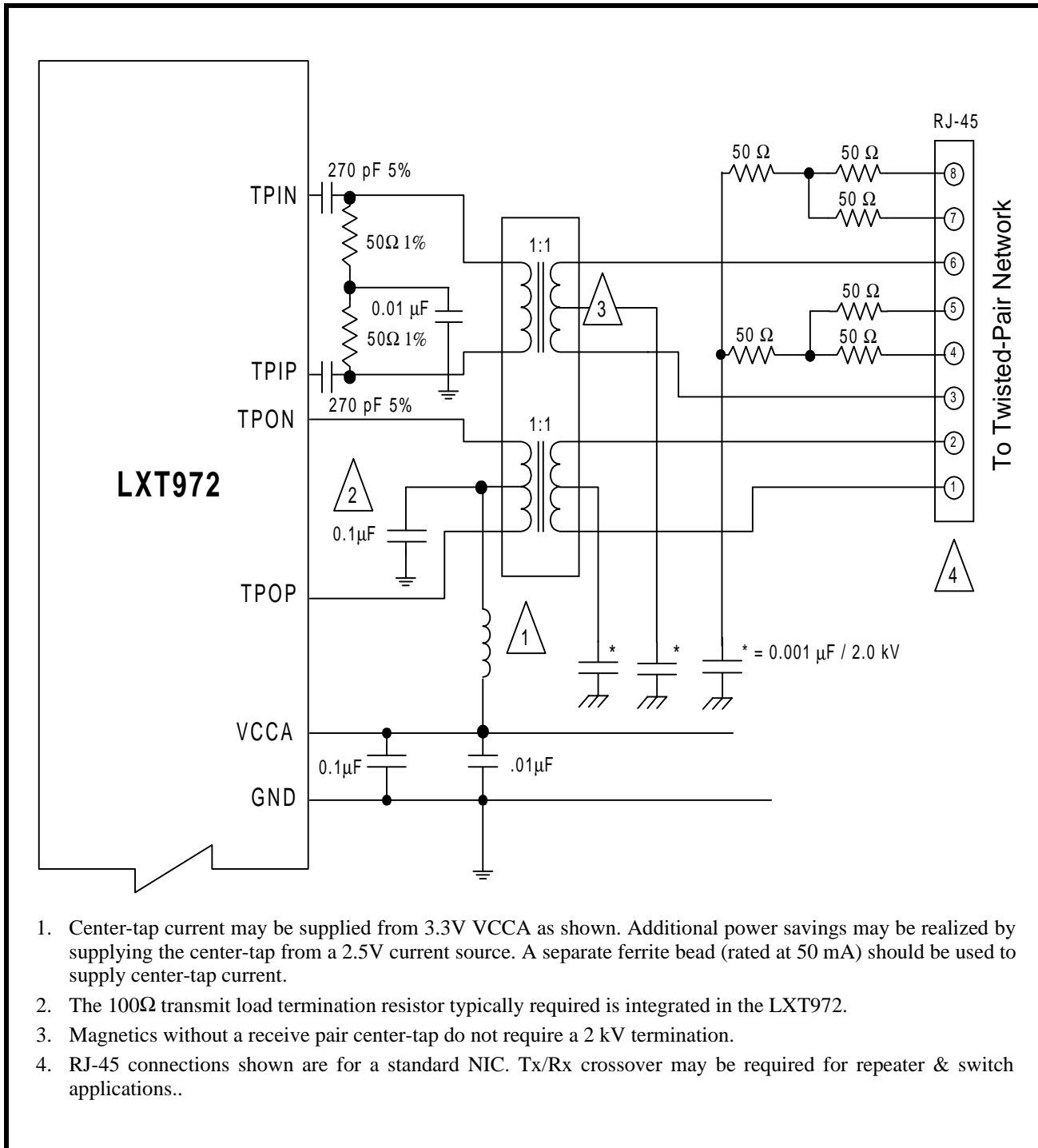
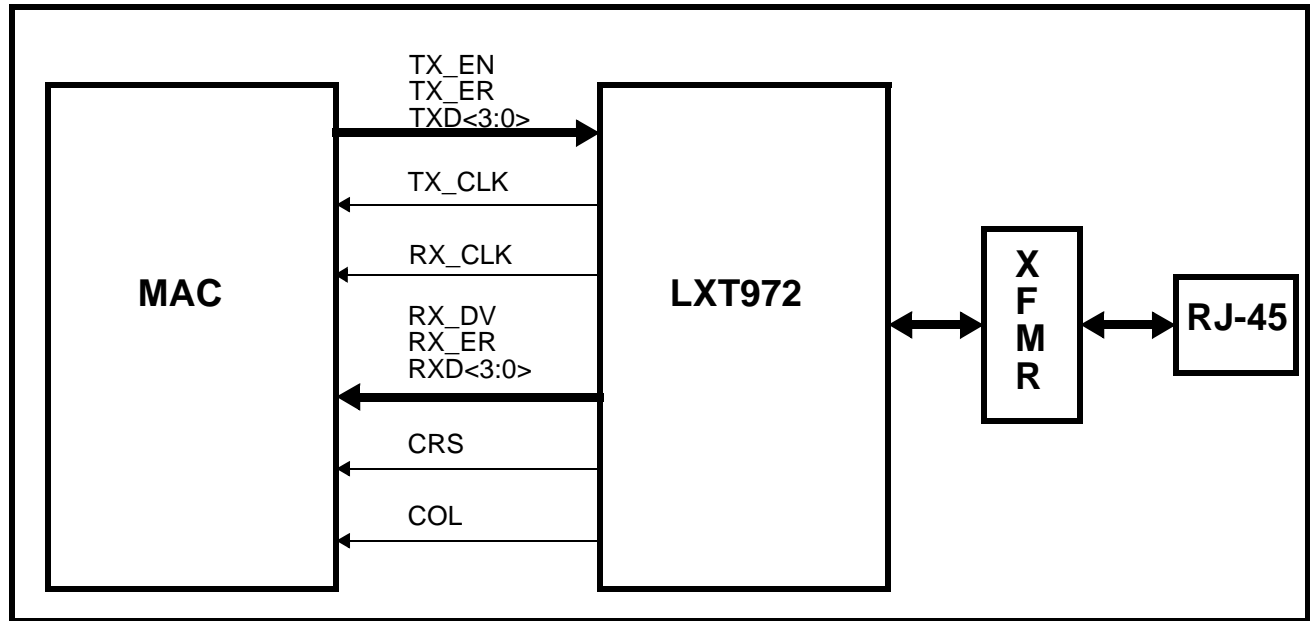


Figure 22: Typical MII Interface



## PRELIMINARY TEST SPECIFICATIONS

### NOTE

Tables 16 through 34 and Figures 23 through 34 represent the target specifications of the LXT972. These specifications are guaranteed by test except where noted “by design.” Minimum and maximum values listed in Tables 18 through 34 apply over the recommended operating conditions specified in Table 17.

## Electrical Parameters

**Table 16: Absolute Maximum Ratings**

| Parameter  | Sym  | Min  | Max  | Units |
|--|------|------|------|-------|
| Supply voltage   | VCC  | -0.3 | 4.0  | V     |
| Operating temperature  | TOPA | 0    | +70  | °C    |
| Storage temperature  | TST  | -65  | +150 | °C    |
| <b>CAUTION</b><br>Exceeding these values may cause permanent damage.<br>Functional operation under these conditions is not implied.<br>Exposure to maximum rating conditions for extended periods may affect device reliability. |      |      |      |       |

**Table 17: Operating Conditions**

| Parameter   |                          | Sym        | Min  | Typ <sup>1</sup> | Max  | Units |
|---|--------------------------|------------|------|------------------|------|-------|
| Recommended operating temperature   | LXT972_C<br>(Commercial) | TOPA       | 0    | –                | 70   | °C    |
| Recommended supply voltage <sup>2</sup>   | Analog & Digital         | VCCA, VCCD | 3.14 | 3.3              | 3.45 | V     |
|   | I/O                      | VCCIO      | 2.35 | –                | 3.45 | V     |
| VCC current   | 100BASE-TX               | ICC        | –    | –                | 110  | mA    |
|   | 10BASE-T                 | ICC        | –    | –                | 82   | mA    |
|   | Power Down               | ICC        | –    | –                | 1    | mA    |
|   | Auto-Negotiation         | ICC        | –    | –                | 110  | mA    |
| 1. Typical values are at 25 °C and are for design aid only; not guaranteed and not subject to production testing.<br>2. Voltages with respect to ground unless otherwise specified. |                          |            |      |                  |      |       |

**Table 18: Digital I/O Characteristics <sup>1</sup>**

| Parameter   | Symbol          | Min | Typ <sup>2</sup> | Max | Units | Test Conditions                        |
|---|-----------------|-----|------------------|-----|-------|--|
| Input Low voltage   | V <sub>IL</sub> | –   | –                | 0.8 | V     | –                                      |
| Input High voltage  | V <sub>IH</sub> | 2.0 | –                | –   | V     | –                                      |
| Input current   | I <sub>I</sub>  | -10 | –                | 10  | μA    | 0.0 < V <sub>I</sub> < V <sub>CC</sub> |
| Output Low voltage  | V <sub>OL</sub> | –   | –                | 0.4 | V     | I <sub>OL</sub> = 4 mA                 |
| Output High voltage   | V <sub>OH</sub> | 2.4 | –                | –   | V     | I <sub>OH</sub> = -4 mA                |
| 1. Applies to all pins except MII, LED and XI/XO pins. Refer to <a href="#">Table 19</a> for MII I/O Characteristics, <a href="#">Table 20</a> for XI/XO and <a href="#">Table 21</a> for LED Characteristics.<br>2. Typical values are at 25 °C and are for design aid only; not guaranteed and not subject to production testing. |                 |     |                  |     |       |  |

**Table 19: Digital I/O Characteristics - MII Pins**

| Parameter   | Symbol                      | Min | Typ <sup>1</sup> | Max | Units | Test Conditions                                   |
|---|-----------------------------|-----|------------------|-----|-------|---|
| Input Low voltage   | V <sub>IL</sub>             | –   | –                | 0.8 | V     | –   |
| Input High voltage  | V <sub>IH</sub>             | 2.0 | –                | –   | V     | –   |
| Input current   | I <sub>I</sub>              | -10 | –                | 10  | μA    | 0.0 < V <sub>I</sub> < V <sub>CCIO</sub>          |
| Output Low voltage  | V <sub>OL</sub>             | –   | –                | 0.4 | V     | I <sub>OL</sub> = 4 mA                            |
| Output High voltage   | V <sub>OH</sub>             | 2.2 | –                | –   | V     | I <sub>OH</sub> = -4 mA, V <sub>CCIO</sub> = 3.3V |
|   | V <sub>OH</sub>             | 2.0 | –                | –   | V     | I <sub>OH</sub> = -4 mA, V <sub>CCIO</sub> = 2.5V |
| Driver output resistance<br>(Line driver output enabled)  | R <sub>O</sub> <sup>2</sup> | –   | 100              | –   | Ω     | V <sub>CCIO</sub> = 2.5V                          |
|   | R <sub>O</sub> <sup>2</sup> | –   | 100              | –   | Ω     | V <sub>CCIO</sub> = 3.3V                          |
| 1. Typical values are at 25 °C and are for design aid only; not guaranteed and not subject to production testing.<br>2. Parameter is guaranteed by design; not subject to production testing. |                             |     |                  |     |       |   |

**Table 20: I/O Characteristics - REFCLK/XI and XO Pins**

| Parameter   | Sym             | Min | Typ <sup>1</sup> | Max  | Units | Test Conditions |
|---|-----------------|-----|------------------|------|-------|-----------------|
| Input Low Voltage   | V <sub>IL</sub> | –   | –                | 0.8  | V     |                 |
| Input High Voltage  | V <sub>IH</sub> | 2.0 | –                | –    | V     |                 |
| Input Clock Frequency Tolerance <sup>2</sup>  | Δf              | –   | –                | ±100 | ppm   |                 |
| Input Clock Duty Cycle <sup>2</sup>   | T <sub>DC</sub> | 40  | –                | 60   | %     |                 |
| Input Capacitance   | C <sub>IN</sub> | –   | 3.0              | –    | pF    |                 |
| 1. Typical values are at 25 °C and are for design aid only; not guaranteed and not subject to production testing.<br>2. Parameter is guaranteed by design; not subject to production testing. |                 |     |                  |      |       |                 |

**Table 21: I/O Characteristics - LED/CFG Pins**

| Parameter           | Sym | Min | Typ | Max | Units | Test Conditions |
|---------------------|-----|-----|-----|-----|-------|-----------------|
| Output Low Voltage  | VOL | –   | –   | 0.4 | V     | IOL = 10 mA     |
| Output High Voltage | VOH | 2.4 | –   | –   | V     | IOH = -10 mA    |
| Input Current       | Ii  | -10 | –   | 10  | μA    | 0 < VI < VCCIO  |

**Table 22: 100BASE-TX Transceiver Characteristics**

| Parameter                        | Sym  | Min  | Typ <sup>1</sup> | Max  | Units | Test Conditions                                   |
|----------------------------------|------|------|------------------|------|-------|---|
| Peak differential output voltage | VP   | 0.95 | –                | 1.05 | V     | Note 2  |
| Signal amplitude symmetry        | Vss  | 98   | –                | 102  | %     | Note 2  |
| Signal rise/fall time            | TRF  | 3.0  | –                | 5.0  | ns    | Note 2  |
| Rise/fall time symmetry          | TRFS | –    | –                | 0.5  | ns    | Note 2  |
| Duty cycle distortion            | DCD  | 35   | 50               | 65   | %     | Offset from 16ns pulse width at 50% of pulse peak |
| Overshoot/Undershoot             | VOS  | –    | –                | 5    | %     | –   |
| Jitter (measured differentially) | –    | –    | –                | 1.4  | ns    | –   |

1. Typical values are at 25 °C and are for design aid only; not guaranteed and not subject to production testing.

2. Measured at the line side of the transformer, line replaced by 100Ω(+/-1%) resistor.

**Table 23: 10BASE-T Transceiver Characteristics**

| Parameter  | Sym | Min | Typ | Max | Units | Test Conditions   |
|--|-----|-----|-----|-----|-------|---|
| Transmitter  |     |     |     |     |       |   |
| Peak differential output voltage                           | VOP | 2.2 | 2.5 | 2.8 | V     | With transformer, line replaced by 100 Ω resistor         |
| Transition timing jitter added by the MAU and PLS sections | -   | 0   | 2   | 11  | ns    | After line model specified by IEEE 802.3 for 10BASE-T MAU |
| Receiver   |     |     |     |     |       |   |
| Receive Input Impedance                                    | ZIN | -   | -   | 22  | kΩ    |   |
| Differential Squelch Threshold                             | VDS | 300 | 420 | 585 | mV    |   |

**Table 24: 10BASE-T Link Integrity Timing Characteristics**

| Parameter   | Sym     | Min | Typ | Max | Units       | Test Conditions |
|---|---------|-----|-----|-----|-------------|-----------------|
| Time Link Loss Receive  | TLL     | 50  | –   | 150 | ms          | –               |
| Link Pulse  | TLP     | 2   | –   | 7   | Link Pulses | –               |
| Link Min Receive Timer  | TLR MIN | 2   | –   | 7   | ms          | –               |
| Link Max Receive Timer  | TLR MAX | 50  | –   | 150 | ms          | –               |
| Link Transmit Period  | TLT     | 8   | –   | 24  | ms          | –               |
| Link Pulse Width  | TLPW    | 60  | –   | 150 | ns          | –               |
| 1. Typical values are at 25 °C and are for design aid only; not guaranteed and not subject to production testing. |         |     |     |     |             |                 |

## Timing Diagrams

Figure 23: 100BASE-TX Receive Timing - 4B Mode

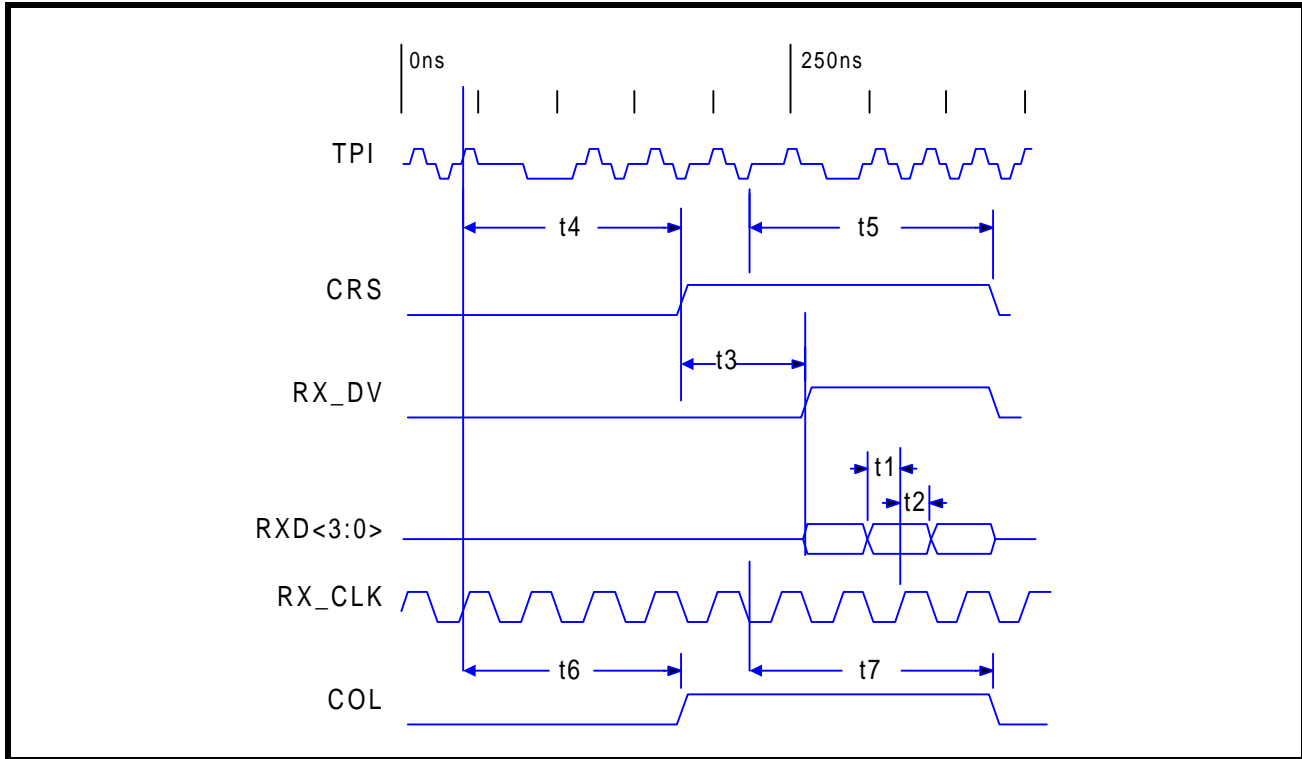
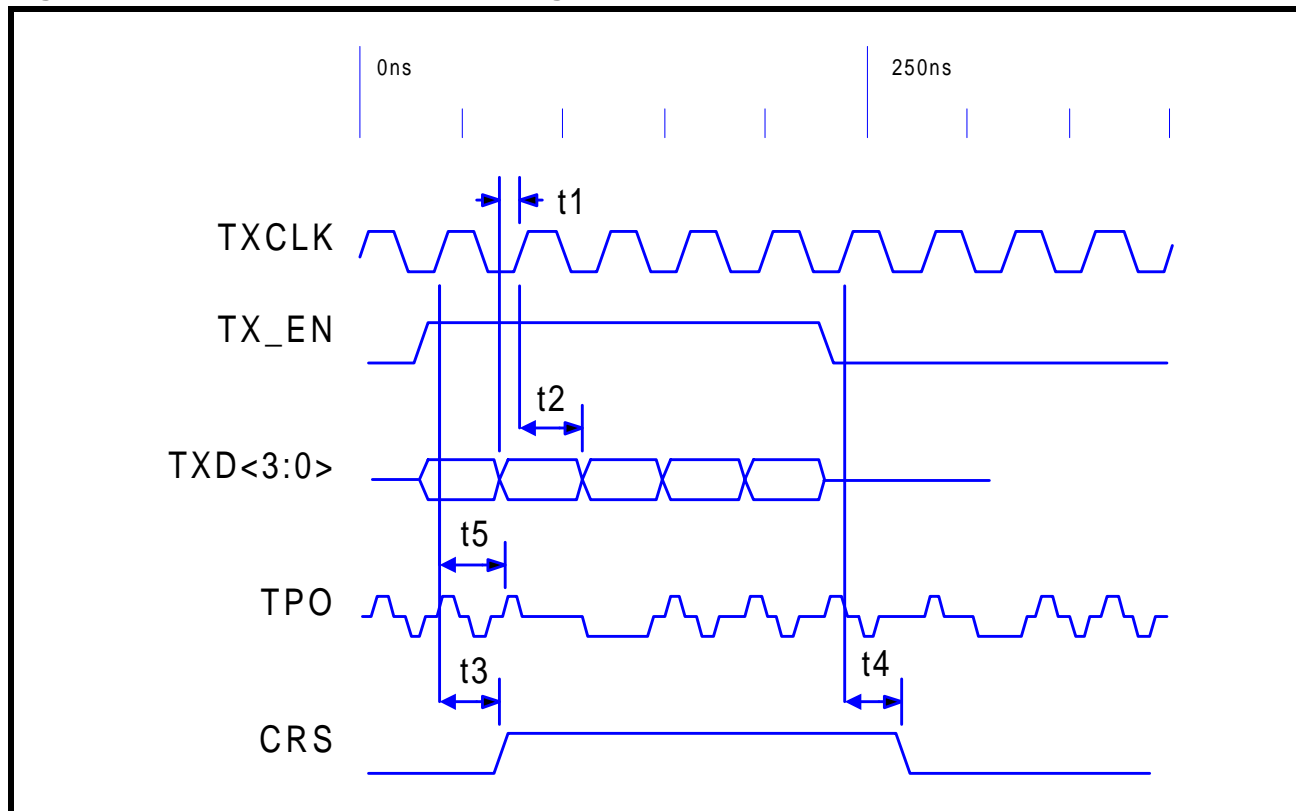


Table 25: 100BASE-TX Receive Timing Parameters - 4B Mode

| Parameter                                    | Sym | Min | Typ <sup>1</sup> | Max | Units <sup>2</sup> | Test Conditions |
|--|-----|-----|------------------|-----|--------------------|-----------------|
| RXD<3:0>, RX_DV, RX_ER setup to RX_CLK High  | t1  | 10  | —                | —   | ns                 | —               |
| RXD<3:0>, RX_DV, RX_ER hold from RX_CLK High | t2  | 10  | —                | —   | ns                 | —               |
| CRS asserted to RXD<3:0>, RX_DV              | t3  | 3   | —                | 5   | BT                 | —               |
| Receive start of “J” to CRS asserted         | t4  | 12  | —                | 16  | BT                 | —               |
| Receive start of “T” to CRS de-asserted      | t5  | 10  | —                | 17  | BT                 | —               |
| Receive start of “J” to COL asserted         | t6  | 16  | —                | 22  | BT                 | —               |
| Receive start of “T” to COL de-asserted      | t7  | 17  | —                | 20  | BT                 | —               |

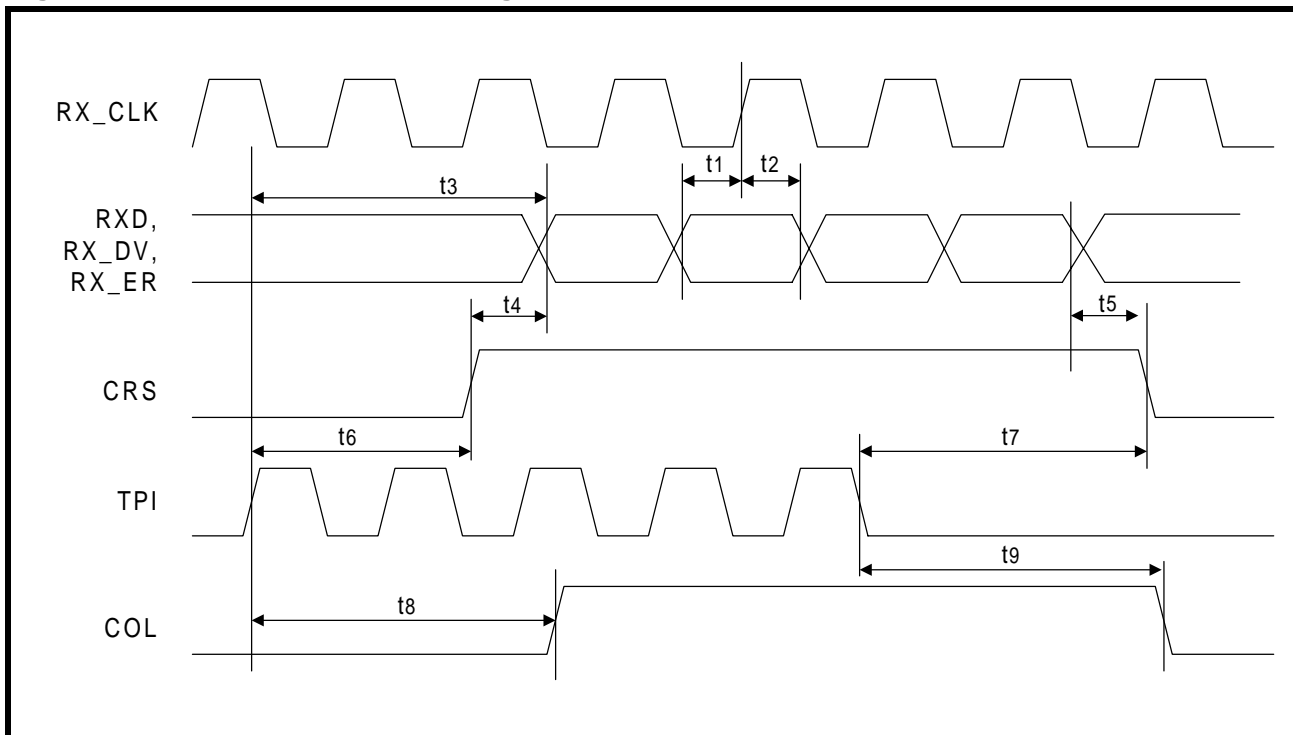
1. Typical values are at 25 °C and are for design aid only; not guaranteed and not subject to production testing.  
 2. BT is the duration of one bit as transferred to and from the MAC and is the reciprocal of the bit rate. 100BASE-T bit time =  $10^{-8}$  s or 10 ns.



**Figure 24: 100BASE-TX Transmit Timing - 4B Mode****Table 26: 100BASE-TX Transmit Timing Parameters - 4B Mode**

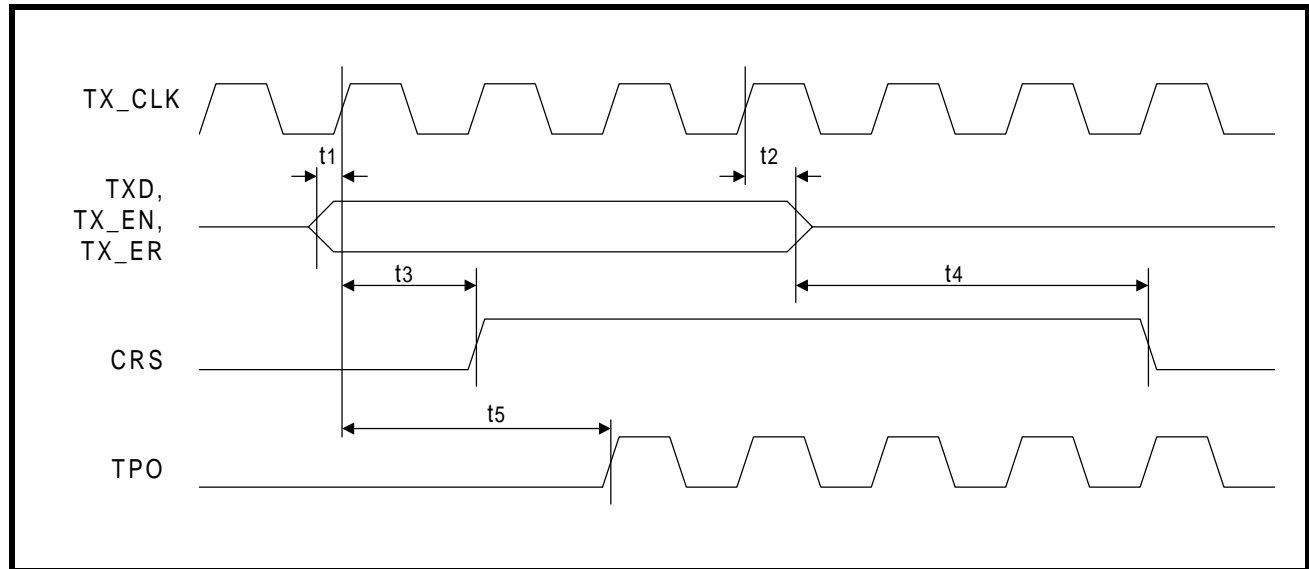
| Parameter                                    | Sym | Min | Typ <sup>1</sup> | Max | Units <sup>2</sup> | Test Conditions |
|--|-----|-----|------------------|-----|--------------------|-----------------|
| TXD<3:0>, TX_EN, TX_ER setup to TX_CLK High  | t1  | 12  | –                | –   | ns                 | –               |
| TXD<3:0>, TX_EN, TX_ER hold from TX_CLK High | t2  | 0   | –                | –   | ns                 | –               |
| TX_EN sampled to CRS asserted                | t3  | 20  | –                | 24  | BT                 | –               |
| TX_EN sampled to CRS de-asserted             | t4  | 24  | –                | 28  | BT                 | –               |
| TX_EN sampled to TPO out (Tx latency)        | t5  | 5.3 | –                | 5.7 | BT                 | –               |

1. Typical values are at 25 °C and are for design aid only; not guaranteed and not subject to production testing.  
 2. BT is the duration of one bit as transferred to and from the MAC and is the reciprocal of the bit rate. 100BASE-T bit time =  $10^{-8}$  s or 10 ns.

**Figure 25: 10BASE-T Receive Timing**

**Table 27: 10BASE-T Receive Timing Parameters**

| Parameter  | Sym | Min | Typ <sup>1</sup> | Max | Units <sup>2</sup> | Test Conditions |
|--|-----|-----|------------------|-----|--------------------|-----------------|
| RXD, RX_DV, RX_ER Setup to RX_CLK High           | t1  | 10  | –                | –   | ns                 | –               |
| RXD, RX_DV, RX_ER Hold from RX_CLK High          | t2  | 10  | –                | –   | ns                 | –               |
| TPIP/N in to RXD out (Rx latency)                | t3  | 5.8 | –                | 6.0 | BT                 | –               |
| CRS asserted to RXD, RX_DV, RX_ER asserted       | t4  | 5   | –                | 32  | BT                 | –               |
| RXD, RX_DV, RX_ER de-asserted to CRS de-asserted | t5  | 0.3 | –                | 0.5 | BT                 | –               |
| TPI in to CRS asserted                           | t6  | 2   | –                | 28  | BT                 | –               |
| TPI quiet to CRS de-asserted                     | t7  | 6   | –                | 10  | BT                 | –               |
| TPI in to COL asserted                           | t8  | 1   | –                | 31  | BT                 | –               |
| TPI quiet to COL de-asserted                     | t9  | 5   | –                | 10  | BT                 | –               |

1. Typical values are at 25 °C and are for design aid only; not guaranteed and not subject to production testing.  
2. BT is the duration of one bit as transferred to and from the MAC and is the reciprocal of the bit rate. 10BASE-T bit time =  $10^{-7}$  s or 100 ns.

**Figure 26: 10BASE-T Transmit Timing****Table 28: 10BASE-T Transmit Timing Parameters**

| Parameter                               | Sym | Min | Typ <sup>1</sup> | Max | Units <sup>2</sup> | Test Conditions |
|---|-----|-----|------------------|-----|--------------------|-----------------|
| TXD, TX_EN, TX_ER setup to TX_CLK High  | t1  | 10  | –                | –   | ns                 | –               |
| TXD, TX_EN, TX_ER hold from TX_CLK High | t2  | 0   | –                | –   | ns                 | –               |
| TX_EN sampled to CRS asserted           | t3  | –   | 2                | –   | BT                 | –               |
| TX_EN sampled to CRS de-asserted        | t4  | –   | 1                | –   | BT                 | –               |
| TX_EN sampled to TPO out (Tx latency)   | t5  | –   | 72.5             | –   | BT                 | –               |

1. Typical values are at 25 °C and are for design aid only; not guaranteed and not subject to production testing.  
 2. BT is the duration of one bit as transferred to and from the MAC and is the reciprocal of the bit rate. 10BASE-T bit time =  $10^{-7}$  s or 100 ns.

Figure 27: 10BASE-T Jabber and Unjabber Timing

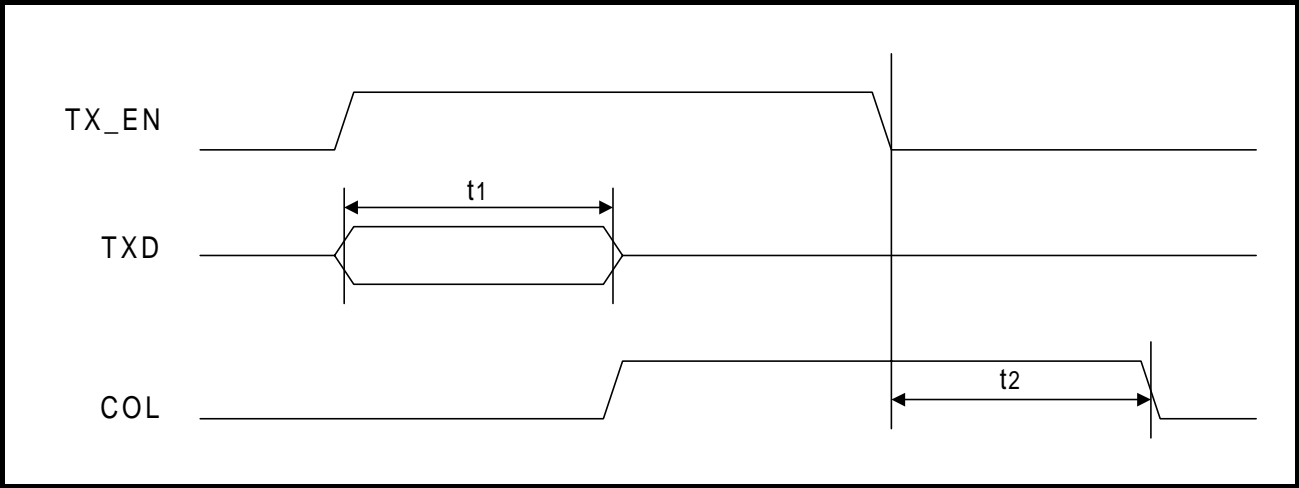


Table 29: 10BASE-T Jabber and Unjabber Timing Parameters

| Parameter             | Sym | Min | Typ <sup>1</sup> | Max | Units | Test Conditions |
|-----------------------|-----|-----|------------------|-----|-------|-----------------|
| Maximum transmit time | t1  | 20  | –                | 150 | ms    | –               |
| Unjab time            | t2  | 250 | –                | 750 | ms    | –               |

1. Typical values are at 25 °C and are for design aid only; not guaranteed and not subject to production testing.

Figure 28: 10BASE-T SQE (Heartbeat) Timing

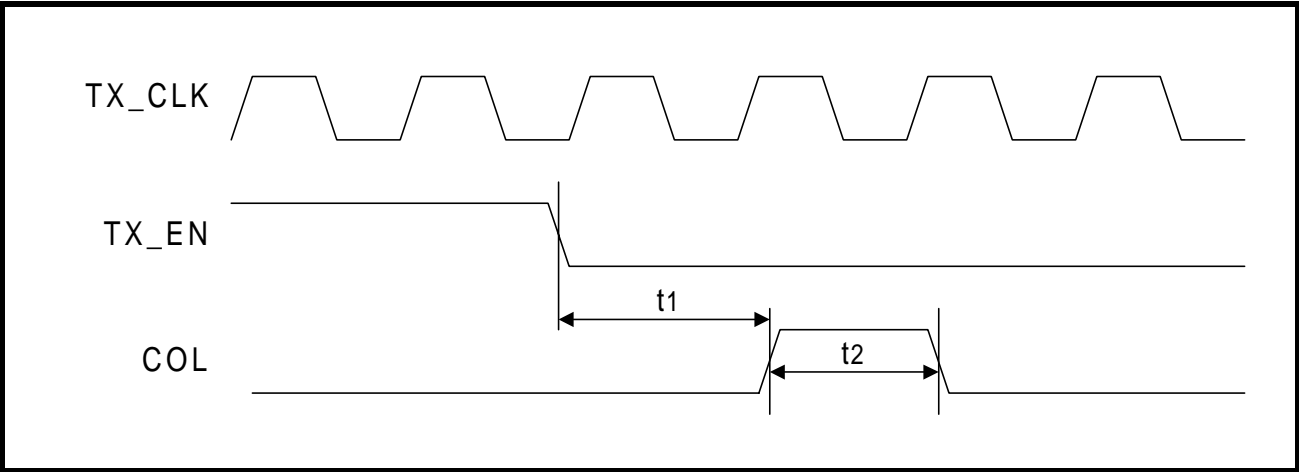
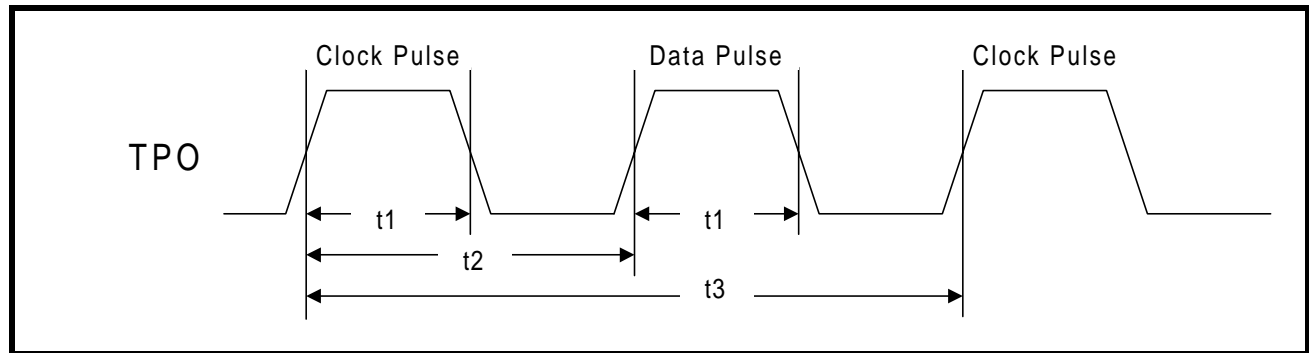
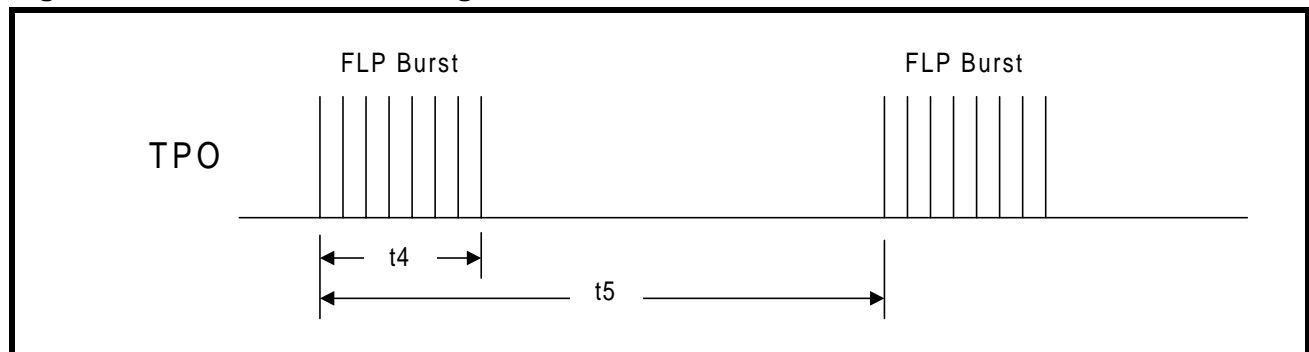


Table 30: 10BASE-T SQE Timing Parameters

| Parameter                       | Sym | Min  | Typ <sup>1</sup> | Max | Units | Test Conditions |
|---------------------------------|-----|------|------------------|-----|-------|-----------------|
| COL (SQE) Delay after TX_EN off | t1  | 0.65 | –                | 1.6 | us    | –               |
| COL (SQE) Pulse duration        | t2  | 0.5  | –                | 1.5 | us    | –               |

1. Typical values are at 25 °C and are for design aid only; not guaranteed and not subject to production testing.

**Figure 29: Auto Negotiation and Fast Link Pulse Timing****Figure 30: Fast Link Pulse Timing****Table 31: Auto Negotiation and Fast Link Pulse Timing Parameters**

| Parameter                   | Sym | Min  | Typ <sup>1</sup> | Max  | Units | Test Conditions |
|-----------------------------|-----|------|------------------|------|-------|-----------------|
| Clock/Data pulse width      | t1  | –    | 100              | –    | ns    | –               |
| Clock pulse to Data pulse   | t2  | 55.5 | –                | 63.8 | μs    | –               |
| Clock pulse to Clock pulse  | t3  | 123  | –                | 127  | μs    | –               |
| FLP burst width             | t4  | –    | 2                | –    | ms    | –               |
| FLP burst to FLP burst      | t5  | 8    | 12               | 24   | ms    | –               |
| Clock/Data pulses per burst | –   | 17   | –                | 33   | ea    | –               |

1. Typical values are at 25 °C and are for design aid only; not guaranteed and not subject to production testing.

Figure 31: MDIO Input Timing

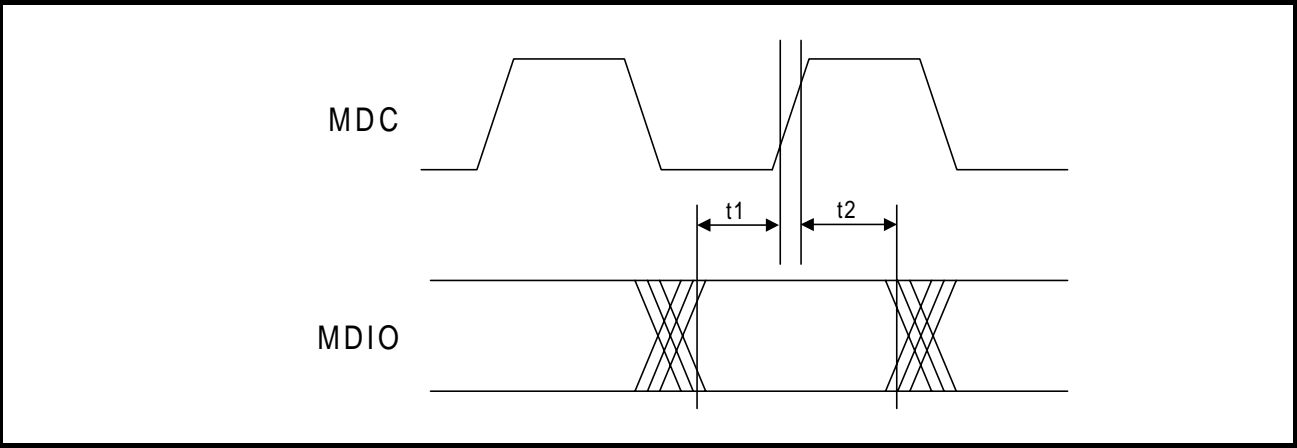


Figure 32: MDIO Output Timing

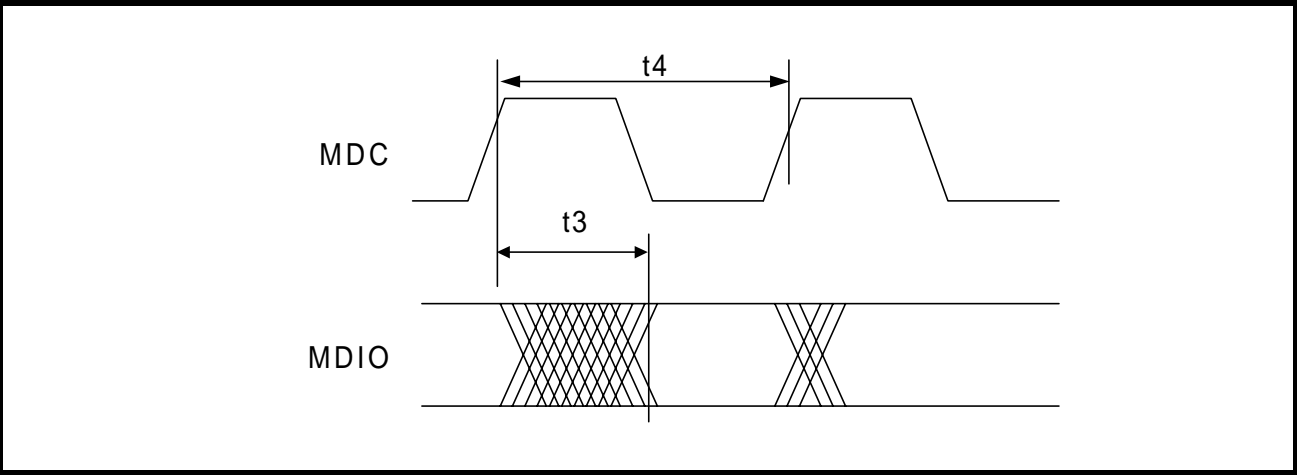


Table 32: MDIO Timing Parameters

| Parameter                               | Sym | Min | Typ <sup>1</sup> | Max | Units | Test Conditions |
|---|-----|-----|------------------|-----|-------|-----------------|
| MDIO setup before MDC, sourced by STA   | t1  | 10  | –                | –   | ns    | –               |
| MDIO hold after MDC, sourced by STA     | t2  | 5   | –                | –   | ns    | –               |
| MDC to MDIO output delay, source by PHY | t3  | –   | –                | 150 | ns    | –               |
| MDC period                              | t4  | 125 | –                | –   | ns    | MDC = 8 MHz     |

1. Typical values are at 25° C and are for design aid only; not guaranteed and not subject to production testing.

Figure 33: Power-Up Timing

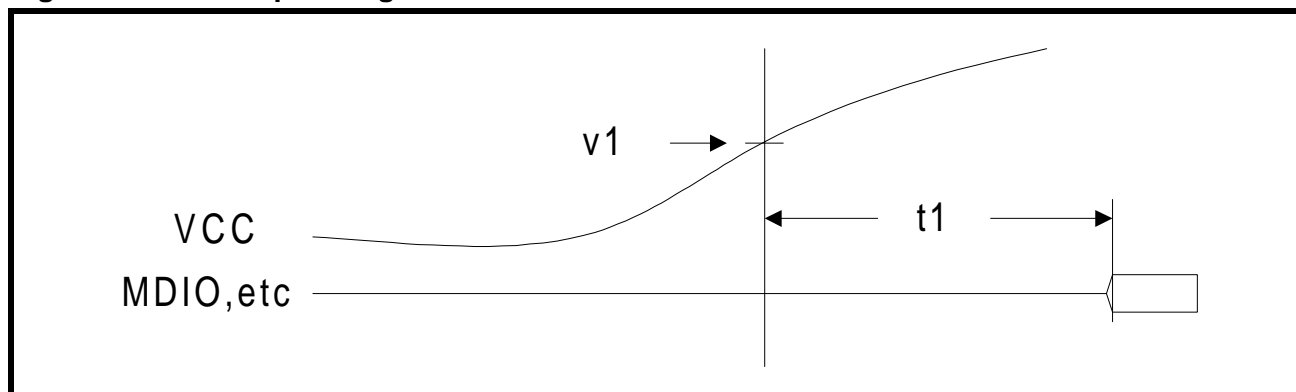
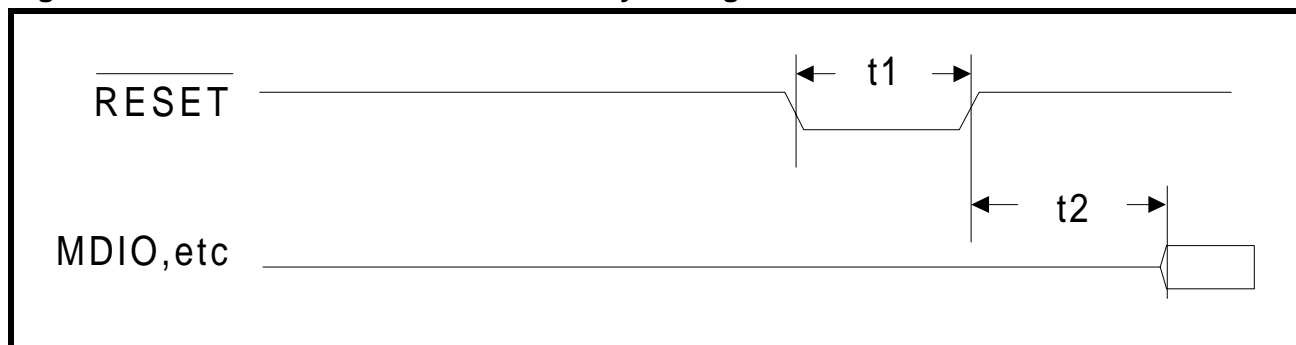


Table 33: Power-Up Timing Parameters

| Parameter                   | Sym | Min | Typ <sup>1</sup> | Max | Units | Test Conditions |
|-----------------------------|-----|-----|------------------|-----|-------|-----------------|
| Voltage threshold           | v1  | –   | 2.9              | –   | V     | –               |
| Power Up delay <sup>2</sup> | t1  | –   | –                | 300 | μs    | –               |

1. Typical values are at 25° C and are for design aid only; not guaranteed and not subject to production testing.

2. Power Up Delay is specified as a maximum value because it refers to the PHY's guaranteed performance - the PHY will come out of reset after a delay of No MORE Than 300 μs. System designers should consider this as a minimum value - After threshold v1 is reached, the MAC should delay No LESS Than 300 μs before accessing the MDIO port.

Figure 34:  $\overline{\text{RESET}}$  Pulse Width and Recovery TimingTable 34:  $\overline{\text{RESET}}$  Pulse Width and Recovery Timing Parameters

| Parameter   | Sym | Min | Typ <sup>1</sup> | Max | Units | Test Conditions |
|---|-----|-----|------------------|-----|-------|-----------------|
| $\overline{\text{RESET}}$ pulse width                 | t1  | 10  | –                | –   | ns    | –               |
| $\overline{\text{RESET}}$ recovery delay <sup>2</sup> | t2  | –   | –                | 300 | μs    | –               |

1. Typical values are at 25° C and are for design aid only; not guaranteed and not subject to production testing.

2. Reset Recovery Delay is specified as a maximum value because it refers to the PHY's guaranteed performance - the PHY will come out of reset after a delay of No MORE Than 300 μs. System designers should consider this as a minimum value - After de-asserting  $\overline{\text{RESET}}$ \*, the MAC should delay No LESS Than 300 μs before accessing the MDIO port.

## REGISTER DEFINITIONS

The LXT972 register set includes multiple 16-bit registers. Refer to [Table 35](#) for a complete register listing.

- Base registers (0 through 8) are defined in accordance with the “Reconciliation Sublayer and Media Independent Interface” and “Physical Layer Link Signaling for 10/100 Mbps Auto-Negotiation” sections of the IEEE 802.3 standard.
- Additional registers are defined in accordance with the IEEE 802.3 standard for adding unique chip functions.

**Table 35: Register Set**

| Address | Register Name   | Bit Assignments                              |
|---------|---|--|
| 0       | Control Register  | Refer to <a href="#">Table 37 on page 51</a> |
| 1       | Status Register #1  | Refer to <a href="#">Table 38 on page 52</a> |
| 2       | PHY Identification Register 1                             | Refer to <a href="#">Table 39 on page 53</a> |
| 3       | PHY Identification Register 2                             | Refer to <a href="#">Table 40 on page 53</a> |
| 4       | Auto-Negotiation Advertisement Register                   | Refer to <a href="#">Table 41 on page 54</a> |
| 5       | Auto-Negotiation Link Partner Base Page Ability Register  | Refer to <a href="#">Table 42 on page 55</a> |
| 6       | Auto-Negotiation Expansion Register                       | Refer to <a href="#">Table 43 on page 56</a> |
| 7       | Auto-Negotiation Next Page Transmit Register              | Refer to <a href="#">Table 44 on page 57</a> |
| 8       | Auto-Negotiation Link Partner Received Next Page Register | Refer to <a href="#">Table 45 on page 57</a> |
| 9       | 1000BASE-T/100BASE-T2 Control Register                    | Not Implemented                              |
| 10      | 1000BASE-T/100BASE-T2 Status Register                     | Not Implemented                              |
| 15      | Extended Status Register                                  | Not Implemented                              |
| 16      | Port Configuration Register                               | Refer to <a href="#">Table 46 on page 58</a> |
| 17      | Status Register #2  | Refer to <a href="#">Table 47 on page 59</a> |
| 18      | Interrupt Enable Register                                 | Refer to <a href="#">Table 48 on page 60</a> |
| 19      | Interrupt Status Register                                 | Refer to <a href="#">Table 49 on page 61</a> |
| 20      | LED Configuration Register                                | Refer to <a href="#">Table 50 on page 62</a> |
| 21- 29  | Reserved  |  |
| 30      | Transmit Control Register                                 | Refer to <a href="#">Table 51 on page 64</a> |



**Table 36: Register Bit Map**

| Reg Title  | Bit Fields |                       |                       |                          |                    |                                  |                        |                        |                  |                      |              |                       |                             |                |                     |                       | Addr |
|--|------------|-----------------------|-----------------------|--------------------------|--------------------|----------------------------------|------------------------|------------------------|------------------|----------------------|--------------|-----------------------|-----------------------------|----------------|---------------------|-----------------------|------|
|  | B15        | B14                   | B13                   | B12                      | B11                | B10                              | B9                     | B8                     | B7               | B6                   | B5           | B4                    | B3                          | B2             | B1                  | B0                    |      |
| Control Register   |            |                       |                       |                          |                    |                                  |                        |                        |                  |                      |              |                       |                             |                |                     |                       |      |
| Control  | Reset      | Loopback              | Speed Select          | A/N Enable               | Power Down         | Isolate                          | Re-start A/N           | Duplex Mode            | COL Test         | Speed Select         | Reserved     |                       |                             |                |                     |                       | 0    |
| Status Register  |            |                       |                       |                          |                    |                                  |                        |                        |                  |                      |              |                       |                             |                |                     |                       |      |
| Status   | 100Base-T4 | 100Base-X Full Duplex | 100Base-X Half Duplex | 10Mbps Full Duplex       | 10Mbps Half Duplex | 100Base-T2 Full Duplex           | 100Base-T2 Half Duplex | Extended Status        | Reserved         | MF Preamble Suppress | A/N Complete | Remote Fault          | A/N Ability                 | Link Status    | Jabber Detect       | Extended Capability   | 1    |
| PHY ID Registers   |            |                       |                       |                          |                    |                                  |                        |                        |                  |                      |              |                       |                             |                |                     |                       |      |
| PHY ID 1   | 15         | 14                    | 13                    | 12                       | 11                 | 10                               | 9                      | 8                      | 7                | 6                    | 5            | 4                     | 3                           | 2              | 1                   | 0                     | 2    |
| PHY ID2  | PHY ID No  |                       |                       |                          |                    |                                  | MFR Model No           |                        |                  |                      |              |                       | MFR Rev No                  |                |                     |                       | 3    |
| Auto-Negotiation Advertisement Register                  |            |                       |                       |                          |                    |                                  |                        |                        |                  |                      |              |                       |                             |                |                     |                       |      |
| A/N Advertise  | Next Page  | Reserved              | Remote Fault          | Reserved                 | Asymm Pause        | Pause                            | 100Base-T4             | 100Base-TX Full Duplex | 100Base-TX       | 10Base-T Full Duplex | 10Base-T     | IEEE Selector Field   |                             |                |                     |                       | 4    |
| Auto-Negotiation Link Partner Base Page Ability Register |            |                       |                       |                          |                    |                                  |                        |                        |                  |                      |              |                       |                             |                |                     |                       |      |
| A/N Link Ability   | Next Page  | Ack                   | Remote Fault          | Reserved                 | Asymm Pause        | Pause                            | 100Base-T4             | 100Base-TX Full Duplex | 100Base-TX       | 10Base-T Full Duplex | 10Base-T     | IEEE Selector Field   |                             |                |                     |                       | 5    |
| Auto-Negotiation Expansion Register                      |            |                       |                       |                          |                    |                                  |                        |                        |                  |                      |              |                       |                             |                |                     |                       |      |
| A/N Expansion  | Reserved   |                       |                       |                          |                    |                                  |                        |                        |                  |                      | Base Page    | Parallel Detect Fault | Link Partner Next Page Able | Next Page Able | Page Received       | Link Partner A/N Able | 6    |
| Auto-Negotiation Next Page Transmit Register             |            |                       |                       |                          |                    |                                  |                        |                        |                  |                      |              |                       |                             |                |                     |                       |      |
| A/N Next Page Txmit                                      | Next Page  | Reserved              | Message Page          | Ack 2                    | Toggle             | Message / Unformatted Code Field |                        |                        |                  |                      |              |                       |                             |                |                     | 7                     |      |
| Auto-Negotiation Link Partner Next Page Receive Register |            |                       |                       |                          |                    |                                  |                        |                        |                  |                      |              |                       |                             |                |                     |                       |      |
| A/N Link Next Page                                       | Next Page  | Ack                   | Message Page          | Ack 2                    | Toggle             | Message / Unformatted Code Field |                        |                        |                  |                      |              |                       |                             |                |                     | 8                     |      |
| Configuration Register                                   |            |                       |                       |                          |                    |                                  |                        |                        |                  |                      |              |                       |                             |                |                     |                       |      |
| Port Config  | Reserved   | Force Link Pass       | Txmit Disable         | Bypass Scrambler (100TX) | Reserved)          | Jabber (10T)                     | SQE (10T)              | TP Loopback (10T)      | CRS Select (10T) | Reserved             | PRE_EN       | Reserved              | Reserved                    | Reserved       | Alternate Next Page | Reserved              | 16   |

**Table 36: Register Bit Map – continued**

| Reg Title                  | Bit Fields |             |                 |                  |                        |      |             |               |                   |               |             |          |              |                  |                |          | Addr |
|----------------------------|------------|-------------|-----------------|------------------|------------------------|------|-------------|---------------|-------------------|---------------|-------------|----------|--------------|------------------|----------------|----------|------|
|                            | B15        | B14         | B13             | B12              | B11                    | B10  | B9          | B8            | B7                | B6            | B5          | B4       | B3           | B2               | B1             | B0       |      |
| Status Register #2         |            |             |                 |                  |                        |      |             |               |                   |               |             |          |              |                  |                |          |      |
| Status Register #2         | Reserved   | 10/100 Mode | Transmit Status | Receive Status   | Collision Status       | Link | Duplex Mode | Auto-Neg      | Auto-Neg Complete | Reserved      | Polarity    | Pause    | Error        | Reserved         | Reserved       | 17       |      |
| Interrupt Enable Register  |            |             |                 |                  |                        |      |             |               |                   |               |             |          |              |                  |                |          |      |
| Interrupt Enable           | Reserved   |             |                 |                  |                        |      | Reserved    | Auto-Neg Mask | Speed Mask        | Duplex Mask   | Link Mask   | Reserved | Reserved     | Interrupt Enable | Test Interrupt | 18       |      |
| Interrupt Status Register  |            |             |                 |                  |                        |      |             |               |                   |               |             |          |              |                  |                |          |      |
| Interrupt Status           | Reserved   |             |                 |                  |                        |      | Reserved    | Auto-Neg Done | Speed Change      | Duplex Change | Link Change | Reserved | MD Interrupt | Reserved         | Reserved       | 19       |      |
| LED Configuration Register |            |             |                 |                  |                        |      |             |               |                   |               |             |          |              |                  |                |          |      |
| LED Config                 | LED1       |             |                 |                  | LED2                   |      |             |               | LED3              |               |             |          | LED Freq     |                  | Pulse Stretch  | Reserved | 20   |
| Transmit Control Register  |            |             |                 |                  |                        |      |             |               |                   |               |             |          |              |                  |                |          |      |
| Trans. Control             | Reserved   |             |                 | Transmit Low Pwr | Port Rise Time Control |      | Reserved    |               |                   |               |             |          |              |                  |                |          | 30   |

**Table 37: Control Register (Address 0)**

| Bit   | Name                     | Description   |             |                           | Type <sup>1</sup> | Default |
|---|--------------------------|---|-------------|---------------------------|-------------------|---------|
| 0.15  | Reset                    | 1 = PHY reset<br>0 = Normal operation                                       |             |                           | R/W<br>SC         | 0       |
| 0.14  | Loopback                 | 1 = Enable loopback mode<br>0 = Disable loopback mode                       |             |                           | R/W               | 0       |
| 0.13  | Speed Selection          | <u>0.6</u>  | <u>0.13</u> | <u>Speed Selected</u>     | R/W               | Note 2  |
|   |                          | 1   | 1           | Reserved                  |                   |         |
|   |                          | 1   | 0           | 1000 Mbps (not supported) |                   |         |
|   |                          | 0   | 1           | 100 Mbps                  |                   |         |
|   |                          | 0   | 0           | 10 Mbps                   |                   |         |
| 0.12  | Auto-Negotiation Enable  | 1 = Enable Auto-Negotiation Process<br>0 = Disable Auto-Negotiation Process |             |                           | R/W               | Note 2  |
| 0.11  | Power-Down               | 1 = Power-down<br>0 = Normal operation                                      |             |                           | R/W               | 0       |
| 0.10  | Isolate                  | 1 = Electrically isolate PHY from MII<br>0 = Normal operation               |             |                           | R/W               | 0       |
| 0.9   | Restart Auto-Negotiation | 1 = Restart Auto-Negotiation Process<br>0 = Normal operation                |             |                           | R/W<br>SC         | 0       |
| 0.8   | Duplex Mode              | 1 = Full Duplex<br>0 = Half Duplex  |             |                           | R/W               | Note 2  |
| 0.7   | Collision Test           | 1 = Enable COL signal test<br>0 = Disable COL signal test                   |             |                           | R/W               | 0       |
| 0.6   | Speed Selection          | <u>0.6</u>  | <u>0.13</u> | <u>Speed Selected</u>     | R/W               | 0       |
|   |                          | 1   | 1           | Reserved                  |                   |         |
|   |                          | 1   | 0           | 1000 Mbps (not supported) |                   |         |
|   |                          | 0   | 1           | 100 Mbps                  |                   |         |
|   |                          | 0   | 0           | 10 Mbps                   |                   |         |
| 0.5:0   | Reserved                 | Write as 0, ignore on Read  |             |                           | R/W               | 00000   |
| 1. R/W = Read/Write<br>RO = Read Only<br>SC = Self Clearing<br>2. Default value of bits 0.12, 0.13 and 0.8 are determined by the LED/CFG pins (refer to <a href="#">Table 8 on page 16</a> ). |                          |   |             |                           |                   |         |

**Table 38: MII Status Register #1 (Address 1)**

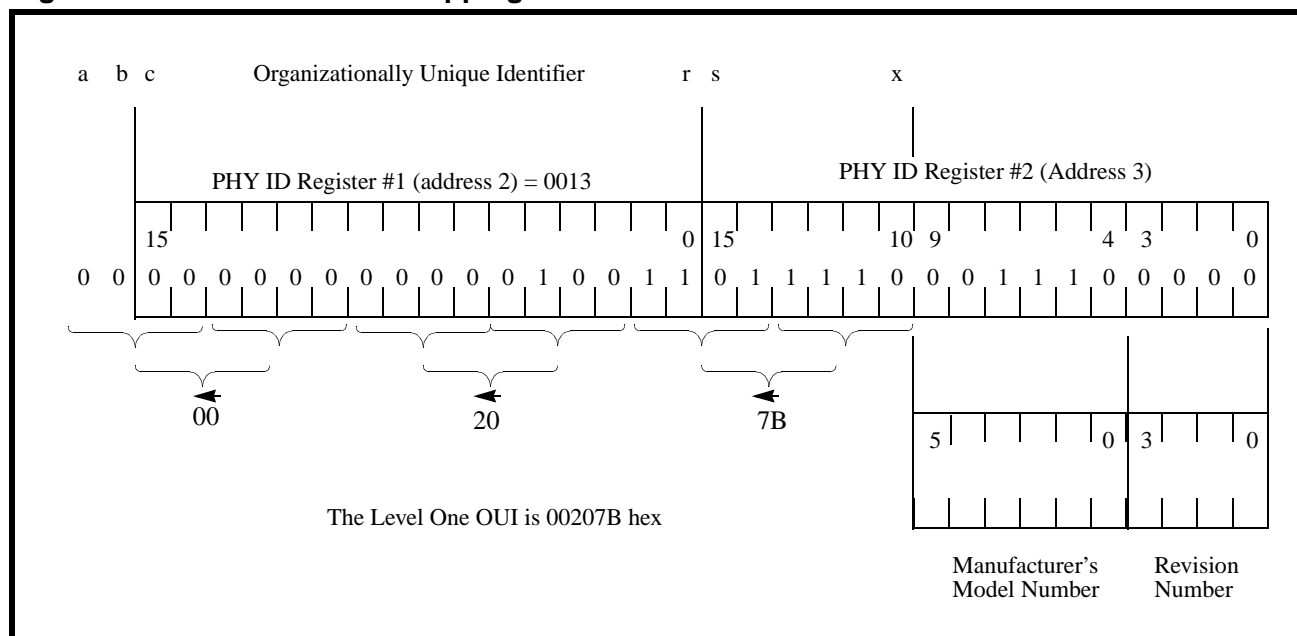
| Bit  | Name   | Description  | Type <sup>1</sup> | Default |
|--|--|--|-------------------|---------|
| 1.15   | 100BASE-T4<br><i>Not Supported</i>             | 1 = PHY able to perform 100BASE-T4<br>0 = PHY not able to perform 100BASE-T4   | RO                | 0       |
| 1.14   | 100BASE-X Full-Duplex                          | 1 = PHY able to perform full-duplex 100BASE-X<br>0 = PHY not able to perform full-duplex 100BASE-X                                   | RO                | 1       |
| 1.13   | 100BASE-X Half-Duplex                          | 1 = PHY able to perform half-duplex 100BASE-X<br>0 = PHY not able to perform half-duplex 100BASE-X                                   | RO                | 1       |
| 1.12   | 10 Mbps Full-Duplex                            | 1 = PHY able to operate at 10 Mbps in full-duplex mode<br>0 = PHY not able to operate at 10 Mbps full-duplex mode                    | RO                | 1       |
| 1.11   | 10 Mbps Half-Duplex                            | 1 = PHY able to operate at 10 Mbps in half-duplex mode<br>0 = PHY not able to operate at 10 Mbps in half-duplex                      | RO                | 1       |
| 1.10   | 100BASE-T2 Full-Duplex<br><i>Not Supported</i> | 1 = PHY able to perform full-duplex 100BASE-T2<br>0 = PHY not able to perform full-duplex 100BASE-T2                                 | RO                | 0       |
| 1.9  | 100BASE-T2 Half-Duplex<br><i>Not Supported</i> | 1 = PHY able to perform half duplex 100BASE-T2<br>0 = PHY not able to perform half-duplex 100BASE-T2                                 | RO                | 0       |
| 1.8  | Extended Status                                | 1 = Extended status information in register 15<br>0 = No extended status information in register 15                                  | RO                | 0       |
| 1.7  | Reserved                                       | 1 = ignore when read   | RO                | 0       |
| 1.6  | MF Preamble Suppression                        | 1 = PHY will accept management frames with preamble suppressed<br>0 = PHY will not accept management frames with preamble suppressed | RO                | 0       |
| 1.5  | Auto-Negotiation Complete                      | 1 = Auto-negotiation complete<br>0 = Auto-negotiation not complete   | RO                | 0       |
| 1.4  | Remote Fault                                   | 1 = Remote fault condition detected<br>0 = No remote fault condition detected  | RO/LH             | 0       |
| 1.3  | Auto-Negotiation Ability                       | 1 = PHY is able to perform Auto-Negotiation<br>0 = PHY is not able to perform Auto-Negotiation                                       | RO                | 1       |
| 1.2  | Link Status                                    | 1 = Link is up<br>0 = Link is down   | RO/LL             | 0       |
| 1.1  | Jabber Detect                                  | 1 = Jabber condition detected<br>0 = Jabber condition not detected   | RO/LH             | 0       |
| 1.0  | Extended Capability                            | 1 = Extended register capabilities<br>0 = Basic register capabilities  | RO                | 1       |
| 1. RO = Read Only<br>LL = Latching Low<br>LH = Latching High |  |  |                   |         |

**Table 39: PHY Identification Register 1 (Address 2)**

| Bit               | Name          | Description  | Type <sup>1</sup> | Default  |
|-------------------|---------------|--|-------------------|----------|
| 2.15:0            | PHY ID Number | The PHY identifier composed of bits 3 through 18 of the OUI. | RO                | 0013 hex |
| 1. RO = Read Only |               |  |                   |          |

**Table 40: PHY Identification Register 2 (Address 3)**

| Bit               | Name                           | Description   | Type <sup>1</sup> | Default |
|-------------------|--------------------------------|---|-------------------|---------|
| 3.15:10           | PHY ID number                  | The PHY identifier composed of bits 19 through 24 of the OUI. | RO                | 011110  |
| 3.9:4             | Manufacturer's model number    | 6 bits containing manufacturer's part number.                 | RO                | 001110  |
| 3.3:0             | Manufacturer's revision number | 4 bits containing manufacturer's revision number.             | RO                | 0001    |
| 1. RO = Read Only |                                |   |                   |         |

**Figure 35: PHY Identifier Bit Mapping**

**Table 41: Auto Negotiation Advertisement Register (Address 4)**

| Bit   | Name                   | Description   | Type <sup>1</sup> | Default |
|---|------------------------|---|-------------------|---------|
| 4.15  | Next Page              | 1 = Port has ability to send multiple pages.<br>0 = Port has no ability to send multiple pages.   | R/W               | 0       |
| 4.14  | Reserved               | Ignore.   | RO                | 0       |
| 4.13  | Remote Fault           | 1 = Remote fault.<br>0 = No remote fault.   | R/W               | 0       |
| 4.12  | Reserved               | Ignore.   | R/W               | 0       |
| 4.11  | Asymmetric Pause       | Pause operation defined in Clause 40 and 27.  | R/W               | 0       |
| 4.10  | Pause                  | 1 = Pause operation enabled for full-duplex links.<br>0 = Pause operation disabled.   | R/W               | Note 2  |
| 4.9   | 100BASE-T4             | 1 = 100BASE-T4 capability is available.<br>0 = 100BASE-T4 capability is not available.<br><br>(The LXT972 does not support 100BASE-T4 but allows this bit to be set to advertise in the Auto-Negotiation sequence for 100BASE-T4 operation. An external 100BASE-T4 transceiver could be switched in if this capability is desired.) | R/W               | 0       |
| 4.8   | 100BASE-TX full-duplex | 1 = Port is 100BASE-TX full-duplex capable.<br>0 = Port is not 100BASE-TX full-duplex capable.  | R/W               | Note 3  |
| 4.7   | 100BASE-TX             | 1 = Port is 100BASE-TX capable.<br>0 = Port is not 100BASE-TX capable.  | R/W               | Note 3  |
| 4.6   | 10BASE-T full-duplex   | 1 = Port is 10BASE-T full-duplex capable.<br>0 = Port is not 10BASE-T full-duplex capable.  | R/W               | Note 3  |
| 4.5   | 10BASE-T               | 1 = Port is 10BASE-T capable.<br>0 = Port is not 10BASE-T capable.  | R/W               | Note 3  |
| 4.4:0   | Selector Field, S<4:0> | <00001> = IEEE 802.3.<br><00010> = IEEE 802.9 ISLAN-16T.<br><00000> = Reserved for future Auto-Negotiation development.<br><11111> = Reserved for future Auto-Negotiation development.<br>Unspecified or reserved combinations should not be transmitted.   | R/W               | 00001   |
| <ol style="list-style-type: none"> <li>1. R/W = Read/Write<br/>RO = Read Only</li> <li>2. Default value of bit 4.10 is determined by pin 33/H8.</li> <li>3. Default values of bits 4.5, 4.6, 4.7, and 4.8 are determined by LED/CFG<sub>n</sub> pins at reset. Refer to <a href="#">Table 8</a> for details.</li> </ol> |                        |   |                   |         |

**Table 42: Auto Negotiation Link Partner Base Page Ability Register (Address 5)**

| Bit               | Name                   | Description  | Type <sup>1</sup> | Default |
|-------------------|------------------------|--|-------------------|---------|
| 5.15              | Next Page              | 1 = Link Partner has ability to send multiple pages.<br>0 = Link Partner has no ability to send multiple pages.  | RO                | N/A     |
| 5.14              | Acknowledge            | 1 = Link Partner has received Link Code Word from LXT972.<br>0 = Link Partner has not received Link Code Word from the LXT972.   | RO                | N/A     |
| 5.13              | Remote Fault           | 1 = Remote fault.<br>0 = No remote fault.  | RO                | N/A     |
| 5.12              | Reserved               | Ignore.  | RO                | N/A     |
| 5.11              | Asymmetric Pause       | Pause operation defined in Clause 40 and 27.<br>1 = Link Partner is Pause capable.<br>0 = Link Partner is not Pause capable.   | RO                | N/A     |
| 5.10              | Pause                  | 1 = Link Partner is Pause capable.<br>0 = Link Partner is not Pause capable.   | RO                | N/A     |
| 5.9               | 100BASE-T4             | 1 = Link Partner is 100BASE-T4 capable.<br>0 = Link Partner is not 100BASE-T4 capable.   | RO                | N/A     |
| 5.8               | 100BASE-TX full-duplex | 1 = Link Partner is 100BASE-TX full-duplex capable.<br>0 = Link Partner is not 100BASE-TX full-duplex capable.   | RO                | N/A     |
| 5.7               | 100BASE-TX             | 1 = Link Partner is 100BASE-TX capable.<br>0 = Link Partner is not 100BASE-TX capable.   | RO                | N/A     |
| 5.6               | 10BASE-T full-duplex   | 1 = Link Partner is 10BASE-T full-duplex capable.<br>0 = Link Partner is not 10BASE-T full-duplex capable.   | RO                | N/A     |
| 5.5               | 10BASE-T               | 1 = Link Partner is 10BASE-T capable.<br>0 = Link Partner is not 10BASE-T capable.   | RO                | N/A     |
| 5.4:0             | Selector Field S<4:0>  | <00001> = IEEE 802.3.<br><00010> = IEEE 802.9 ISLAN-16T.<br><00000> = Reserved for future Auto-Negotiation development.<br><11111> = Reserved for future Auto-Negotiation development.<br>Unspecified or reserved combinations shall not be transmitted. | RO                | N/A     |
| 1. RO = Read Only |                        |  |                   |         |

**Table 43: Auto Negotiation Expansion (Address 6)**

| Bit                                  | Name                        | Description   | Type <sup>1</sup> | Default |
|--------------------------------------|-----------------------------|---|-------------------|---------|
| 6.15:6                               | Reserved                    | Ignore on read.   | RO                | 0       |
| 6.5                                  | Base Page                   | This bit indicates the status of the Auto-Negotiation variable, base page. It flags synchronization with the Auto-Negotiation state diagram allowing detection of interrupted links. This bit is only used if bit 16.1 (Alternate NP feature) is set.<br><br>1 = basepage = true<br>0 = basepage = false                                    | RO/<br>LH         | 0       |
| 6.4                                  | Parallel Detection Fault    | 1 = Parallel detection fault has occurred.<br>0 = Parallel detection fault has not occurred.  | RO/<br>LH         | 0       |
| 6.3                                  | Link Partner Next Page Able | 1 = Link partner is next page able.<br>0 = Link partner is not next page able.  | RO                | 0       |
| 6.2                                  | Next Page Able              | 1 = Local device is next page able.<br>0 = Local device is not next page able.  | RO                | 1       |
| 6.1                                  | Page Received               | 1 = Indicates that a new page has been received and the received code word has been loaded into register 5 (base pages) or register 8 (next pages) as specified in clause 28 of 802.3. This bit will be cleared on read. If bit 16.1 is set, the Page Received bit will also be cleared when mr_page_rx = false or transmit_disable = true. | RO<br>LH          | 0       |
| 6.0                                  | Link Partner A/N Able       | 1 = Link partner is auto-negotiation able.<br>0 = Link partner is not auto-negotiation able.  | RO                | 0       |
| 1. RO = Read Only LH = Latching High |                             |   |                   |         |



**Table 44: Auto Negotiation Next Page Transmit Register (Address 7)**

| Bit                                 | Name                           | Description   | Type <sup>1</sup> | Default         |
|-------------------------------------|--------------------------------|---|-------------------|-----------------|
| 7.15                                | Next Page (NP)                 | 1 = Additional next pages follow<br>0 = Last page   | R/W               | 0               |
| 7.14                                | Reserved                       | Write as 0, ignore on read  | RO                | 0               |
| 7.13                                | Message Page (MP)              | 1 = Message page<br>0 = Unformatted page  | R/W               | 1               |
| 7.12                                | Acknowledge 2 (ACK2)           | 1 = Will comply with message<br>0 = Can not comply with message   | R/W               | 0               |
| 7.11                                | Toggle (T)                     | 1 = Previous value of the transmitted Link Code Word equalled logic zero<br>0 = Previous value of the transmitted Link Code Word equalled logic one | R/W               | 0               |
| 7.10:0                              | Message/Unformatted Code Field |   | R/W               | 0000000<br>0001 |
| 1. RO = Read Only. R/W = Read/Write |                                |   |                   |                 |

**Table 45: Auto Negotiation Link Partner Next Page Receive Register (Address 8)**

| Bit                | Name                           | Description   | Type <sup>1</sup> | Default |
|--------------------|--------------------------------|---|-------------------|---------|
| 8.15               | Next Page (NP)                 | 1 = Link Partner has additional next pages to send<br>0 = Link Partner has no additional next pages to send   | RO                | 0       |
| 8.14               | Acknowledge (ACK)              | 1 = Link Partner has received Link Code Word from LXT972<br>0 = Link Partner has not received Link Code Word from LXT972                            | RO                | 0       |
| 8.13               | Message Page (MP)              | 1 = Page sent by the Link Partner is a Message Page<br>0 = Page sent by the Link Partner is an Unformatted Page                                     | RO                | 0       |
| 8.12               | Acknowledge 2 (ACK2)           | 1 = Link Partner complies with the message<br>0 = Link Partner can not comply with the message  | RO                | 0       |
| 8.11               | Toggle (T)                     | 1 = Previous value of the transmitted Link Code Word equalled logic zero<br>0 = Previous value of the transmitted Link Code Word equalled logic one | RO                | 0       |
| 8.10:0             | Message/Unformatted Code Field | User definable  | RO                | 0       |
| 1. RO = Read Only. |                                |   |                   |         |

**Table 46: Configuration Register (Address 16, Hex 10)**

| Bit    | Name                          | Description  | Type <sup>1</sup> | Default |
|--------|-------------------------------|--|-------------------|---------|
| 16.15  | Reserved                      | Write as zero, ignore on read.   | R/W               | 0       |
| 16.14  | Force Link Pass               | 1 = Force Link pass<br>0 = Normal operation  | R/W               | 0       |
| 16.13  | Transmit Disable              | 1 = Disable Twisted Pair transmitter<br>0 = Normal Operation   | R/W               | 0       |
| 16.12  | Bypass Scrambler (100BASE-TX) | 1 = Bypass Scrambler and Descrambler<br>0 = Normal Operation   | R/W               | 0       |
| 16.11  | Reserved                      | Ignore   | R/W               | 0       |
| 16.10  | Jabber (10BASE-T)             | 1 = Disable Jabber Correction<br>0 = Normal operation  | R/W               | 0       |
| 16.9   | SQE (10BASE-T)                | 1 = Enable Heart Beat<br>0 = Disable Heart Beat  | R/W               | 0       |
| 16.8   | TP Loopback (10BASE-T)        | 1 = Disable TP loopback during half-duplex operation<br>0 = Normal Operation   | R/W               | 0       |
| 16.7   | CRS Select (10BASE-T)         | 1 = CRS deassert extends to RX_DV deassert<br>0 = Normal Operation   | R/W               | 1       |
| 16.6   | Reserved                      | Write as zero, ignore on read.   | R/W               | 0       |
| 16.5   | PRE_EN                        | Preamble Enable.<br>0 = Set RX_DV high coincident with SFD.<br>1 = Set RX_DV high and RXD = preamble when CRS is asserted. | R/W               | 0       |
| 16.4:3 | Reserved                      | Write as zero, ignore on read.   | R/W               | 00      |
| 16.2   | Reserved                      | Write as zero, ignore on read.   | R/W               | 0       |
| 16.1   | Alternate NP feature          | 1 = Enable alternate auto negotiate next page feature.<br>0 = Disable alternate auto negotiate next page feature           | R/W               | 0       |
| 16.0   | Reserved                      | Write as zero, ignore on read.   | R/W               | 0       |

1. R/W = Read /Write, LHR = Latches High on Reset

**Table 47: Status Register #2 (Address 17)**

| Bit                                 | Name                      | Description  | Type <sup>1</sup> | Default |
|-------------------------------------|---------------------------|--|-------------------|---------|
| 17.15                               | Reserved                  | Always 0.  | RO                | 0       |
| 17.14                               | 10/100 Mode               | 1 = LXT972 is operating in 100BASE-TX mode.<br>0 = LXT972 is not operating 100BASE-TX mode.  | RO                | 0       |
| 17.13                               | Transmit Status           | 1 = LXT972 is transmitting a packet.<br>0 = LXT972 is not transmitting a packet.   | RO                | 0       |
| 17.12                               | Receive Status            | 1 = LXT972 is receiving a packet.<br>0 = LXT972 is not receiving a packet.   | RO                | 0       |
| 17.11                               | Collision Status          | 1 = Collision is occurring.<br>0 = No collision.   | RO                | 0       |
| 17.10                               | Link                      | 1 = Link is up.<br>0 = Link is down.   | RO                | 0       |
| 17.9                                | Duplex Mode               | 1 = Full-duplex.<br>0 = Half-duplex.   | RO                | 0       |
| 17.8                                | Auto-Negotiation          | 1 = LXT972 is in Auto-Negotiation Mode.<br>0 = LXT972 is in manual mode.   | RO                | 0       |
| 17.7                                | Auto-Negotiation Complete | 1 = Auto-negotiation process completed.<br>0 = Auto-negotiation process not completed.<br><br>This bit is only valid when auto negotiate is enabled, and is equivalent to bit 1.5. | RO                | 0       |
| 17.6                                | Reserved                  | Reserved.  | RO                | 0       |
| 17.5                                | Polarity                  | 1 = Polarity is reversed.<br>0 = Polarity is not reversed.   | RO                | 0       |
| 17.4                                | Pause                     | 1 = Device Pause capable.<br>0 = Device Not Pause capable.   | RO                | 0       |
| 17.3                                | Error                     | 1 = Error Occurred (Remote Fault, X,Y,Z).<br>0 = No error occurred.  | RO                | 0       |
| 17.2                                | Reserved                  | Always 0.  | RO                | 0       |
| 17.1                                | Reserved                  | Always 0.  | RO                | 0       |
| 17.0                                | Reserved                  | Always 0.  | RO                | 0       |
| 1. RO = Read Only. R/W = Read/Write |                           |  |                   |         |

**Table 48: Interrupt Enable Register (Address 18)**

| Bit                  | Name      | Description  | Type <sup>1</sup> | Default |
|----------------------|-----------|--|-------------------|---------|
| 18.15:9              | Reserved  | Write as 0; ignore on read.  | R/W               | N/A     |
| 18.8                 | Reserved  | Write as 0; ignore on read.  | R/W               | 0       |
| 18.7                 | ANMSK     | Mask for Auto Negotiate Complete<br>1 = Enable event to cause interrupt.<br>0 = Do not allow event to cause interrupt. | R/W               | 0       |
| 18.6                 | SPEEDMSK  | Mask for Speed Interrupt<br>1 = Enable event to cause interrupt.<br>0 = Do not allow event to cause interrupt.         | R/W               | 0       |
| 18.5                 | DUPLEXMSK | Mask for Duplex Interrupt<br>1 = Enable event to cause interrupt.<br>0 = Do not allow event to cause interrupt.        | R/W               | 0       |
| 18.4                 | LINKMSK   | Mask for Link Status Interrupt<br>1 = Enable event to cause interrupt.<br>0 = Do not allow event to cause interrupt.   | R/W               | 0       |
| 18.3                 | Reserved  | Write as 0; ignore on read.  | R/W               | 0       |
| 18.2                 | Reserved  | Write as 0; ignore on read.  | R/W               | 0       |
| 18.1                 | INTEN     | 1 = Enable interrupts.<br>0 = Disable interrupts.  | R/W               | 0       |
| 18.0                 | TINT      | 1 = Force interrupt on $\overline{\text{MDINT}}$ .<br>0 = Normal operation.  | R/W               | 0       |
| 1. R/W = Read /Write |           |  |                   |         |

**Table 49: Interrupt Status Register (Address 19, Hex 13)**

| Bit                                      | Name      | Description   | Type <sup>1</sup> | Default |
|--|-----------|---|-------------------|---------|
| 19.15:9                                  | Reserved  | Ignore  | RO                | N/A     |
| 19.8                                     | Reserved  | Ignore  | RO                | 0       |
| 19.7                                     | ANDONE    | Auto Negotiation Status<br>1 = Auto Negotiation has completed.<br>0 = Auto Negotiation has not completed.   | RO/SC             | N/A     |
| 19.6                                     | SPEEDCHG  | Speed Change Status<br>1 = A Speed Change has occurred since last reading this register.<br>0 = A Speed Change has not occurred since last reading this register.     | RO/SC             | 0       |
| 19.5                                     | DUPLEXCHG | Duplex Change Status<br>1 = A Duplex Change has occurred since last reading this register.<br>0 = A Duplex Change has not occurred since last reading this register.  | RO/SC             | 0       |
| 19.4                                     | LINKCHG   | Link Status Change Status<br>1 = A Link Change has occurred since last reading this register.<br>0 = A Link Change has not occurred since last reading this register. | RO/SC             | 0       |
| 19.3                                     | Reserved  | Ignore  | RO                | 0       |
| 19.2                                     | MDINT     | 1 = MII interrupt pending.<br>0 = No MII interrupt pending.   | RO                |         |
| 19.1                                     | Reserved  | Ignore.   | RO                | N/A     |
| 19.0                                     | Reserved  | Ignore  | RO                | 0       |
| 1. R/W = Read/Write, SC = Self Clearing. |           |   |                   |         |

**Table 50: LED Configuration Register (Address 20, Hex 14)**

| Bit   | Name                     | Description   | Type <sup>1</sup> | Default |
|---|--------------------------|---|-------------------|---------|
| 20.15:12  | LED1<br>Programming bits | 0000 = Display Speed Status (Continuous, Default)<br>0001 = Display Transmit Status (Stretched)<br>0010 = Display Receive Status (Stretched)<br>0011 = Display Collision Status (Stretched)<br>0100 = Display Link Status (Continuous)<br>0101 = Display Duplex Status (Continuous)<br>0110 = Unused<br>0111 = Display Receive or Transmit Activity (Stretched)<br>1000 = Test mode- turn LED on (Continuous)<br>1001 = Test mode- turn LED off (Continuous)<br>1010 = Test mode- blink LED fast (Continuous)<br>1011 = Test mode- blink LED slow (Continuous)<br>1100 = Display Link and Receive Status combined <sup>2</sup> (Stretched) <sup>3</sup><br>1101 = Display Link and Activity Status combined <sup>2</sup> (Stretched) <sup>3</sup><br>1110 = Display Duplex and Collision Status combined <sup>4</sup> (Stretched) <sup>3</sup><br>1111 = Unused | R/W               | 0000    |
| 20.11:8   | LED2<br>Programming bits | 0000 = Display Speed Status<br>0001 = Display Transmit Status<br>0010 = Display Receive Status<br>0011 = Display Collision Status<br>0100 = Display Link Status (Default)<br>0101 = Display Duplex Status<br>0110 = Unused<br>0111 = Display Receive or Transmit Activity<br>1000 = Test mode- turn LED on<br>1001 = Test mode- turn LED off<br>1010 = Test mode- blink LED fast<br>1011 = Test mode- blink LED slow<br>1100 = Display Link and Receive Status combined <sup>2</sup> (Stretched) <sup>3</sup><br>1101 = Display Link and Activity Status combined <sup>2</sup> (Stretched) <sup>3</sup><br>1110 = Display Duplex and Collision Status combined <sup>4</sup> (Stretched) <sup>3</sup><br>1111 = Unused   | R/W               | 0100    |
| <ol style="list-style-type: none"> <li>1. R/W = Read /Write<br/>RO = Read Only<br/>LH = Latching High</li> <li>2. Link status is the primary LED driver. The LED is asserted (solid ON) when the link is up.<br/>The secondary LED driver (Receive or Activity) causes the LED to change state (blink).</li> <li>3. Combined event LED settings are not affected by Pulse Stretch bit 20.1. These display settings are stretched regardless of the value of 20.1.</li> <li>4. Duplex status is the primary LED driver. The LED is asserted (solid ON) when the link is full duplex.<br/>Collision status is the secondary LED driver. The LED changes state (blinks) when a collision occurs.</li> <li>5. Values are relative approximations. Not guaranteed or production tested.</li> </ol> |                          |   |                   |         |

**Table 50: LED Configuration Register (Address 20, Hex 14) – continued**

| Bit   | Name                  | Description   | Type <sup>1</sup> | Default |
|---|-----------------------|---|-------------------|---------|
| 20.7:4  | LED3 Programming bits | 0000 = Display Speed Status<br>0001 = Display Transmit Status<br>0010 = Display Receive Status (Default)<br>0011 = Display Collision Status<br>0100 = Display Link Status<br>0101 = Display Duplex Status<br>0110 = Unused<br>0111 = Display Receive or Transmit Activity<br>1000 = Test mode- turn LED on<br>1001 = Test mode- turn LED off<br>1010 = Test mode- blink LED fast<br>1011 = Test mode- blink LED slow<br>1100 = Display Link and Receive Status combined <sup>2</sup> (Stretched) <sup>3</sup><br>1101 = Display Link and Activity Status combined <sup>2</sup> (Stretched) <sup>3</sup><br>1110 = Display Duplex and Collision Status combined <sup>4</sup> (Stretched) <sup>3</sup><br>1111 = Unused | R/W               | 0010    |
| 20.3:2  | LEDFREQ <sup>5</sup>  | 00 = Stretch LED events to 30 ms.<br>01 = Stretch LED events to 60 ms.<br>10 = Stretch LED events to 100 ms.<br>11 = Reserved.  | R/W               | 00      |
| 20.1  | PULSE-STRETCH         | 0 = Disable pulse stretching of all LEDs.<br>1 = Enable pulse stretching of all LEDs.   | R/W               | 1       |
| 20.0  | Reserved              | Ignore.   | R/W               | N/A     |
| <ol style="list-style-type: none"> <li>1. R/W = Read /Write<br/>RO = Read Only<br/>LH = Latching High</li> <li>2. Link status is the primary LED driver. The LED is asserted (solid ON) when the link is up. The secondary LED driver (Receive or Activity) causes the LED to change state (blink).</li> <li>3. Combined event LED settings are not affected by Pulse Stretch bit 20.1. These display settings are stretched regardless of the value of 20.1.</li> <li>4. Duplex status is the primary LED driver. The LED is asserted (solid ON) when the link is full duplex. Collision status is the secondary LED driver. The LED changes state (blinks) when a collision occurs.</li> <li>5. Values are relative approximations. Not guaranteed or production tested.</li> </ol> |                       |   |                   |         |

**Table 51: Transmit Control Register #2 (Address 30)**

| Bit  | Name                                | Description   | Type <sup>2</sup> | Default |
|--|-------------------------------------|---|-------------------|---------|
| 30.15:11   | Reserved                            | Ignore  | R/W               | 0       |
| 30.12  | Transmit Low Power                  | 1 = Forces the transmitter into low power mode. Also forces a zero-differential transmission.<br>0 = Normal transmission. | R/W               | 0       |
| 30.11:10   | Port Rise Time Control <sup>1</sup> | 00 = 2.7 ns (default is pins TXSLEW<1:0>)<br>01 = 3.5 ns<br>10 = 2.3 ns<br>11 = 2.0 ns                                    | R/W               | N/A     |
| 30.9:0   | Reserved                            | Ignore  | R/W               | 0       |
| 1. Values are relative approximations. Not guaranteed or production tested.<br>2. R/W = Read/Write |                                     |   |                   |         |



## PACKAGE SPECIFICATION

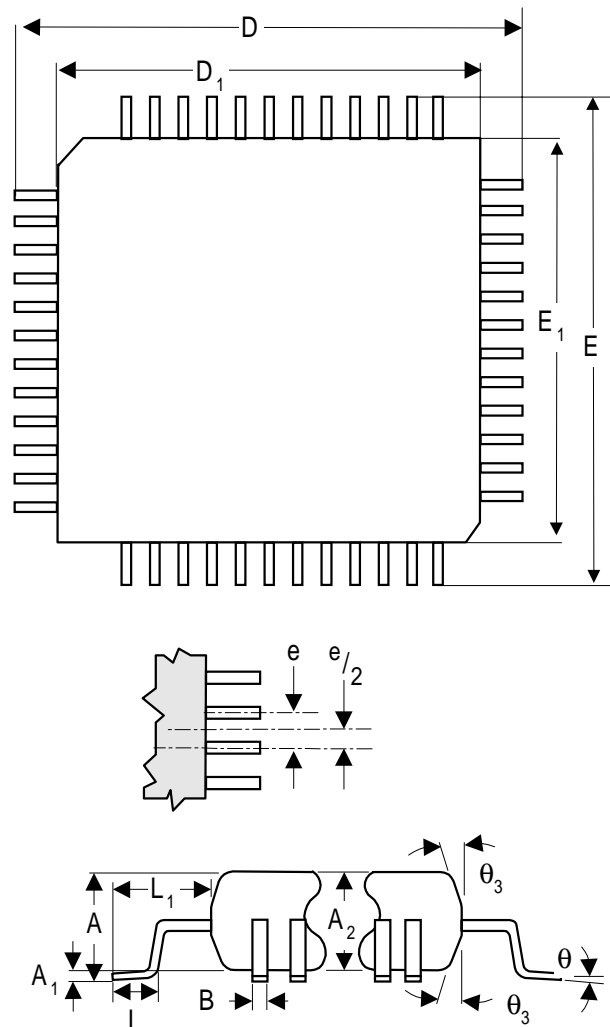
Figure 36: LXT972 LQFP Package Specifications

### 64-Pin Low Profile Quad Flat Pack

• Part Number - LXT972LC Commercial Temperature Range (0°C to +70°C)

| Dim            | Millimeters           |       |
|----------------|-----------------------|-------|
|                | Min                   | Max   |
| A              | —                     | 1.60  |
| A <sub>1</sub> | 0.05                  | 0.15  |
| A <sub>2</sub> | 1.35                  | 1.45  |
| B              | 0.17                  | 0.27  |
| D              | 11.85                 | 12.15 |
| D <sub>1</sub> | 9.9                   | 10.1  |
| E              | 11.85                 | 12.15 |
| E <sub>1</sub> | 9.9                   | 10.1  |
| e              | 0.50 BSC <sup>1</sup> |       |
| L              | 0.45                  | 0.75  |
| L <sub>1</sub> | 1.00 REF              |       |
| θ <sub>3</sub> | 11°                   | 13°   |
| θ              | 0°                    | 7°    |

1. Basic Spacing between Centers



## REVISION HISTORY

**Table 52: Changes from Rev 1.0 to Rev 1.1 (02/00)**

| Section  | Page | Type   | Description   |
|--|------|--------|---|
| Table 2<br>LXT972 MII Signal<br>Description        | 6    | Modify | Change first sentence under MDDIS to read: “When MDDIS is High, the MDIO is disabled from read and write operations.” |
| Twisted-Pair Interface                             | 11   | Modify | Modify first and third paragraphs for greater clarify.  |
| MDIO Management<br>Interface                       | 12   | Add    | Add third paragraph regarding MDIO and MDDIS operation in Hardware Control Mode.                                      |
| Figure 5<br>Initialization Sequence                | 14   | Modify | Modify figure to reflect change in MDIO operation in the Hardware Control Mode when MDDIS is set High.                |
| Figure 8<br>10BASE-T Clocking                      | 19   | Modify | Remove (Externally Sourced) from figure.  |
| Figure 9<br>10BASE-X Clocking                      | 19   | Modify | Remove (Externally Sourced) from figure.  |
| Figure 21<br>Typical TP Interface -<br>Switch      | 20   | Modify | Add bypass cap to output transformer center tap.  |
| Figure 22<br>Typical TP Interface -<br>NIC         | 21   | Modify | Add bypass cap to output transformer center tap.  |
| Table 27<br>10BASE-T Receive<br>Timing Parameters  | 42   | Modify | Change Min, Typ, and Max values for t3.   |
| Table 28<br>10BASE-T Transmit<br>Timing Parameters | 43   | Modify | Change Typ value for t5.  |

---

---

## NOTES

---

## Corporate Headquarters

9750 Goethe Road  
Sacramento, California 95827  
Telephone: (916) 855-5000  
Web: www.level1.com



### The Americas

#### EAST

##### Eastern Area Headquarters

234 Littleton Road, Unit 1A  
Westford, MA 01886  
USA  
Tel: (978) 692-1193  
Fax: (978) 692-1244

##### North Central Regional Office

One Pierce Place  
Suite 500E  
Itasca, IL 60143  
USA  
Tel: (630) 250-6044  
Fax: (630) 250-6045

##### Southeastern Regional Office

One Copley Parkway  
Suite 309  
Morrisville, NC 27560  
USA  
Tel: (919) 463-0488  
Fax: (919) 463-0486

#### WEST

##### Western Area Headquarters

3375 Scott Blvd., #110  
Santa Clara, CA 95054  
USA  
Tel: (408) 496-1950  
Fax: (408) 496-1955

##### South Central Regional Office

800 E. Campbell Road  
Suite 199  
Richardson, TX 75081  
USA  
Tel: (972) 680-5207  
Fax: (972) 680-5236

##### Southwestern Regional Office

28202 Cabot Road  
Suite 300  
Laguna Niguel, CA 92677  
USA  
Tel: (949) 365-5655  
Fax: (949) 365-5653

##### Latin/South America

9750 Goethe Road  
Sacramento, CA 95827  
USA  
Tel: (916) 855-5000  
Fax: (916) 854-1102

### International

#### ASIA/PACIFIC

##### Asia / Pacific Area Headquarters

101 Thomson Road  
United Square #08-01  
Singapore 307591  
Thailand  
Tel: +65 353 6722  
Fax: +65 353 6711

##### Central Asia/Pacific Regional Office

12F-1, No. 128, Section 3,  
Ming Sheng East Road  
Taipei, Taiwan,  
R.O.C.  
Tel: +886 2 2547 5227  
Fax: +886 2 2547 5228

##### Northern Asia/Pacific Regional Office

Shinjuku Tsuji Building, 2F  
2-10-4, Yoyogi, Shibuya-Ku  
Tokyo, 151-0053 Japan  
Tel: 81-3-5333-1780  
Fax: 81-3-5333-1785

#### EUROPE

##### European Area HQ & Southern Regional Office

Parc Technopolis-Bat. Zeta 3,  
avenue du Canada -  
Z.A. de Courtaboeuf  
Les Ulis Cedex 91974  
France  
Tel: +33 1 64 86 2828  
Fax: +33 1 60 92 0608

##### Central Europe Regional Office

Lilienthalstr.25  
D-85399  
Hallbergmoos, Germany  
Tel: +49-811-60068-0  
Fax: +49-811-60068-15

##### Northern Europe Regional Office

Torshamnsgatan 35  
164/40 Kista/Stockholm,  
Sweden  
Tel: +46 8 750 3980  
Fax: +46 8 750 3982

##### Israel

##### Regional Office

Regus Instant Off.-Harel House  
3 Abba Hillel Silver Street  
Ramat Gan, 52522 Israel  
Tel: +972-3-754-1130  
Fax: +972-3-754-1100

| <u>Revision</u> | <u>Date</u> | <u>Status</u>     |
|-----------------|-------------|-------------------|
| 1.1             | 02/00       | Technical Update. |

Information in this document is provided in connection with Level One products. No license, express or implied, by estoppel or otherwise, to any intellectual property rights is granted by this document. Except as provided in Level One's Terms and Conditions of Sale for such products, Level One assumes no liability whatsoever, and Level One disclaims any express or implied warranty, relating to sale and/or use of Level One products including liability or warranties relating to fitness for a particular purpose, merchantability, or infringement of any patent, copyright or other intellectual property right. Level One products are not intended for use in medical, life saving, or life sustaining applications.

Level One may make changes to specifications and product descriptions at any time, without notice. Designers must not rely on the absence or characteristics of any features or instructions marked "reserved" or "undefined." Level One reserves these for future definition and shall have no responsibility whatsoever for conflicts or incompatibilities arising from future changes to them. Third party brands and names are the property of their respective owners.

The products listed in this publication are covered by one or more of the following patents. Additional patents pending.

5,008,637; 5,028,888; 5,057,794; 5,059,924; 5,068,628; 5,077,529; 5,084,866; 5,148,427; 5,153,875; 5,157,690; 5,159,291; 5,162,746; 5,166,635; 5,181,228; 5,204,880; 5,249,183; 5,257,286; 5,267,269; 5,461,661; 5,493,243; 5,534,863; 5,574,726; 5,581,585; 5,608,341; 5,666,129; 5,671,249; 5,701,099; 5,717,714; 5,742,603; 5,748,634; 5,764,638; 5,777,996; 5,802,052; 5,880,645; 5,881,074; 5,907,553; 5,926,049; 5,926,504; 5,946,398

Copyright © 2000 Level One Communications, Inc., an Intel Company. Specifications subject to change without notice. All rights reserved.

IS972DS-R1.1-0200