



SANYO Semiconductors

DATA SHEET

An ON Semiconductor Company

LV57331TT

Monolithic Linear IC
1ch Step-up
Switching Regulator (Variable Type)

Overview

The LV57331TT is a one-channel step-up switching regulator.

Features

- Switch current limit : 1.0A
- Internal switch ON resistance : 0.16Ω
- The frequency can be switched.
- Overheat protection
- UVP
- Shutdown circuit incorporated
- Soft start circuit incorporated

Specifications

Maximum Ratings at Ta = 25°C

Parameter	Symbol	Conditions	Ratings	Unit
Power-supply voltage	V _{IN} max		6.5	V
SW pin voltage *1	SW		18	V
Input pin	V _{IN}	FB, VC, SHDNB, FSLCT, SS	6.5	V
Allowable power dissipation	P _d max	Mounted on a specified board *2	0.7	W
The maximum junction temperature	T _j max		125	°C
Operating temperature	T _{opr}		-40 to +85	°C
Storage temperature	T _{stg}		-55 to +150	°C

*1: Please the coil is not connected and do not exceed the terminal SW even the overshoot inclusion when the switching is done and momentarily.

*2: Specified board: 60.0mm × 60.0mm × 1.6mm, glass epoxy board of 2-layer.

Recommended Operating Conditions at Ta = 25°C, GND=0V

Parameter	Symbol	Conditions	Ratings	Unit
Power-supply voltage	V _{IN}		2.6 to 5.5	V
Maximum output voltage	V _{OUT} max		15	V

■ Any and all SANYO Semiconductor Co.,Ltd. products described or contained herein are, with regard to "standard application", intended for the use as general electronics equipment (home appliances, AV equipment, communication device, office equipment, industrial equipment etc.). The products mentioned herein shall not be intended for use for any "special application" (medical equipment whose purpose is to sustain life, aerospace instrument, nuclear control device, burning appliances, transportation machine, traffic signal system, safety equipment etc.) that shall require extremely high level of reliability and can directly threaten human lives in case of failure or malfunction of the product or may cause harm to human bodies, nor shall they grant any guarantee thereof. If you should intend to use our products for applications outside the standard applications of our customer who is considering such use and/or outside the scope of our intended standard applications, please consult with us prior to the intended use. If there is no consultation or inquiry before the intended use, our customer shall be solely responsible for the use.

■ Specifications of any and all SANYO Semiconductor Co.,Ltd. products described or contained herein stipulate the performance, characteristics, and functions of the described products in the independent state, and are not guarantees of the performance, characteristics, and functions of the described products as mounted in the customer's products or equipment. To verify symptoms and states that cannot be evaluated in an independent device, the customer should always evaluate and test devices mounted in the customer's products or equipment.

SANYO Semiconductor Co., Ltd.

<http://semicon.sanyo.com/en/network>

LV57331TT

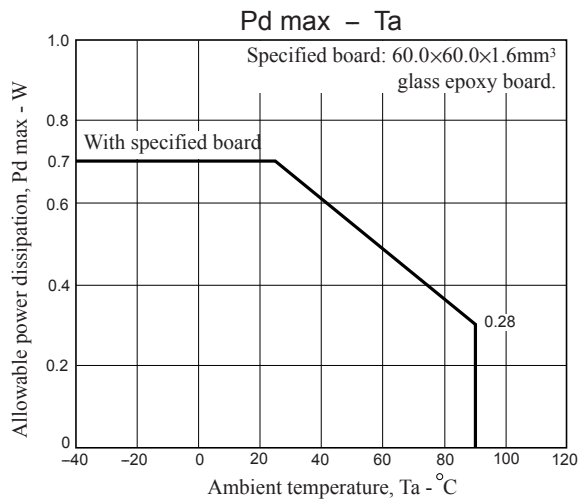
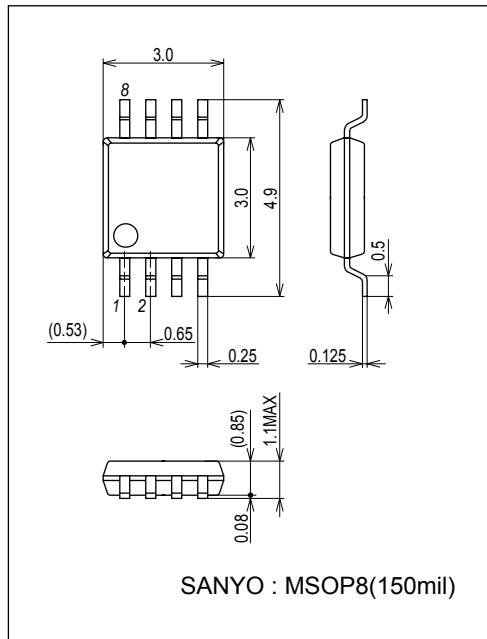
Electrical Characteristics at $T_a = 25^\circ\text{C}$, $V_{\text{IN}} = 2.6\text{V}$, $I_{\text{L}} = 0\text{A}$

Parameter	Symbol	Conditions	Ratings			Unit
			min	typ	max	
Power supply current consumption	I_{Q}	FB = 1.6V(Not switching)		1.4	2.0	mA
		SHDNB = 0V		5	10	μA
Feedback voltage	V_{FB}		1.215	1.245	1.275	V
Switch current limit	I_{CL}	$V_{\text{IN}} = 2.8\text{V}$	1.0	1.8	3.0	A
Line regulation	$\%V_{\text{OUT}}/\Delta V_{\text{IN}}$	$2.6\text{V} \leq V_{\text{IN}} \leq 5.5\text{V}$, $I_{\text{OUT}} = 0\text{mA}$		0.05	0.2	%/V
Current of terminal FB bias	I_{B}		-100	0	+100	nA
Input voltage range	V_{IN}		2.6		5.5	V
Error amplifier transconductance	g_{m}			300		μS
Error amplifier voltage gain	A_{V}			300		V/V
MAX on duty	D_{max}		80	85	98	%
Switching frequency	f_{S}	FSLCT = 0V or open	448	560	672	kHz
		FSLCT = V_{IN}	0.96	1.2	1.44	MHz
SHDNB pin current	I_{SHDNB}	SHDNB = V_{IN}		0.01	0.1	μA
		SHDNB = 0V		-0.4	-1	μA
SW pin leak current	I_{L}	$V_{\text{SW}} = 18\text{V}$		0.01	3	μA
SW pin ON resistance	$R_{\text{DS(ON)}}$	$V_{\text{IN}} = 2.8\text{V}$, $I_{\text{SW}} = 1\text{A}$		0.16	0.4	Ω
SHDNB [L] input threshold	V_{IL}		0.3	0.6		V
SHDNB [H] input threshold	V_{IH}			0.6	0.9	V
Input voltage on threshold	U_{VP}		1.8	1.94	2.0	V
Input voltage off threshold			1.7	1.86	1.9	V
Soft start pin charge current	I_{SOFT}	SS = 0V	6	15	24	μA

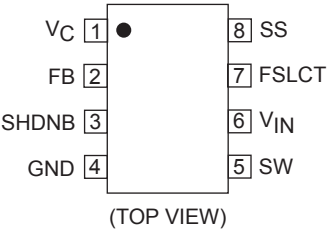
Package Dimensions

unit : mm (typ)

3245B



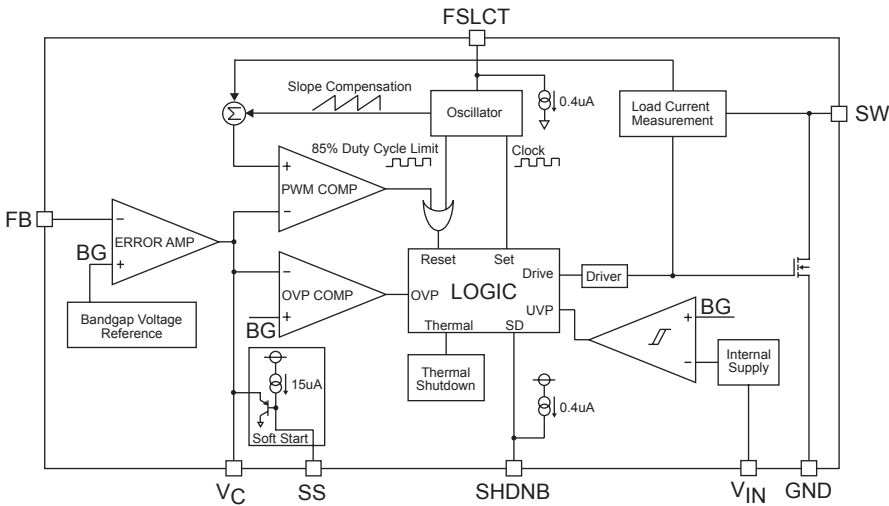
Package Dimensions



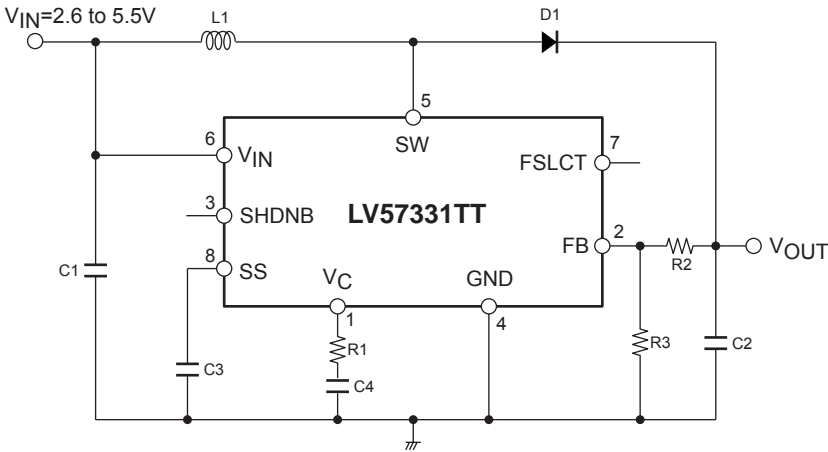
Pin function explanation

Symbol	function
VC	Error amplifier output pin
FB	Error amplifier reversing input pin
SHDNB	Shutdown input pin (shutdown when [L] is input)
GND	GND pin
SW	Nch power FET open drain output
VIN	Power input pin
FSLCT	Switching frequency switch pin ($V_{IN} = 1.2\text{MHz}$, GND or open =560kHz)
SS	Soft start control pin. Connect capacity on the outside. The constant current of 15 μA flows from the pin. Open when unused.

Block Diagram



Application Circuit Example



- SANYO Semiconductor Co.,Ltd. assumes no responsibility for equipment failures that result from using products at values that exceed, even momentarily, rated values (such as maximum ratings, operating condition ranges, or other parameters) listed in products specifications of any and all SANYO Semiconductor Co.,Ltd. products described or contained herein.
- SANYO Semiconductor Co.,Ltd. strives to supply high-quality high-reliability products, however, any and all semiconductor products fail or malfunction with some probability. It is possible that these probabilistic failures or malfunction could give rise to accidents or events that could endanger human lives, trouble that could give rise to smoke or fire, or accidents that could cause damage to other property. When designing equipment, adopt safety measures so that these kinds of accidents or events cannot occur. Such measures include but are not limited to protective circuits and error prevention circuits for safe design, redundant design, and structural design.
- In the event that any or all SANYO Semiconductor Co.,Ltd. products described or contained herein are controlled under any of applicable local export control laws and regulations, such products may require the export license from the authorities concerned in accordance with the above law.
- No part of this publication may be reproduced or transmitted in any form or by any means, electronic or mechanical, including photocopying and recording, or any information storage or retrieval system, or otherwise, without the prior written consent of SANYO Semiconductor Co.,Ltd.
- Any and all information described or contained herein are subject to change without notice due to product/technology improvement, etc. When designing equipment, refer to the "Delivery Specification" for the SANYO Semiconductor Co.,Ltd. product that you intend to use.
- Information (including circuit diagrams and circuit parameters) herein is for example only; it is not guaranteed for volume production.
- Upon using the technical information or products described herein, neither warranty nor license shall be granted with regard to intellectual property rights or any other rights of SANYO Semiconductor Co.,Ltd. or any third party. SANYO Semiconductor Co.,Ltd. shall not be liable for any claim or suits with regard to a third party's intellectual property rights which has resulted from the use of the technical information and products mentioned above.

This catalog provides information as of Jun, 2011. Specifications and information herein are subject to change without notice.