

To: Proview Electronics Co., Ltd.

APPROVAL SIGNATURE

## SPECIFICATION

FOR

TOSHIBA MATSUSHITA DISPLAY TECHNOLOGY

TFT-LED MODULE

**LTD141ECEF**

SPECIFICATION No. : \_\_\_\_\_  
LTD141ECEF

DATE OF ISSUE : 2003-04-15

(DATE OF EXPIRY : 2006-04-14)

\_\_\_\_\_  
H. Yamaguchi  
General Manager  
Quality Assurance Div.

<Engineering Department to contact as per SPECIFICATION>  
TV/PC/Monitor-Use Marketing & Engineering Dept.  
AVC-Use LTD Div.

Toshiba Matsushita Display Technology Co.,Ltd  
1-9-2, Hatara-cho, Fukaya-shi, Saitama, 366-0032, JAPAN

## Revision History

Date	Sheet (New)	Item	Old	New	Reason
2003-03-20	New				
2003-04-15	24	Product Label	Rev.0	Rev.Z	To separate Module Rank

New No.

## Caution and Handling Precaution

For your end user's safety, it is strongly advised that the items with "Σ" should be included in the instruction manual of the system which may be issued by your organization.

### For Safety



#### Warning

- (1) Toshiba Matsushita Display Technology's Standard LED modules have not been customized for operation in extreme environments or for use in applications where performance failures could be life-threatening or otherwise catastrophic. Since they must never be installed in aircraft navigation control systems (such as, but not limited to Traffic Collision System and Air traffic Indicator), in military defense or weapons systems, in critical industrial process-control systems (e.g., those involved in the production of nuclear energy), or in critical medical device or patient life-support systems.
- (2) DISCONNECT POWER SUPPLY before handling LED module.  
DO NOT TOUCH the parts inside LED module and the fluorescent lamp's (hereinafter called "FL") connector or cable in order to prevent electric shock, because high voltage is supplied to these parts from the inverter unit while power supply is turned on.
- (3) Make sure to insert the module FL connector to the inverter connector in correct position.  
Do not insert in irregular position.  
If incorrect, this may cause smoke or burn of electrical parts by high voltage of FL circuit.  
If there is a possibility that the connector has been inserted incorrectly, please re-insert the connector only after you confirm the module and FL power is completely off.  
DO NOT USE the mating FL connector which Toshiba Matsushita Display Technology does not specify.  
Otherwise, Toshiba Matsushita Display Technology shall not be liable for any damages caused by the connector.



#### Caution

- (1) DO NOT DISASSEMBLE OR MODIFY the module.  
Sensitive parts inside LED module may be damaged, and dusts or scratches may mar the displays.  
Toshiba Matsushita Display Technology does not warrant the modules, if customer disassembled or modified them.
- Σ(2) DO NOT INGEST liquid crystal material, DO NOT INHALE this material, and DO NOT PERMIT this material to contact the skin, if LED panel is broken and liquid crystal material spills out.  
In the event of inadvertent contact, immediately rinse the mouth or eyes with adequate water. If this material should inadvertently contact the skin or clothing, wash immediately with alcohol and then rinse thoroughly with water.
- Σ(3) BE CAREFUL WITH CHIPS OF GLASS that may cause injuring fingers or skin, when the glass is broken.
- (4) DO NOT EXCEED the absolute maximum rating values under the worst probable conditions caused by the supply voltage variation, input voltage variation, variation in parts' constants, ambient temperature, etc., otherwise LED module may be damaged.
- (5) Suitable protection circuit should be applied for each system design.  
DO NOT MODIFY the fuse used in the module. It may cause overheat and/or burning if dusts or metal particles are on the PCBs in the LED module.

- (6) Be sure that power supply output from the system should be limited to smaller values than listed shown below. (For example Quick Arcing Fuse with listed ratings can be used.)

It is because this LED module explained in this specification has a current limiter, with such function at power input line(s). But it may be some possibility of overheat and/or burning of LED module and its peripheral devices before current limiter of the module when open-short test of the module is performed by using power supply higher than following recommended value.

Power supply	Recommended maximum output current of power supply	Recommended Fuse Rating (in case of using fuse for current limiter)	Built-in Fuse Rating (for reference)
$V_{DD}$	<u>4.0</u> A	<u>3.0</u> A	<u>1.5</u> A

- (7) Always comply with all applicable environmental regulations, when disposing of LCD.

## For Designing the System

- (1) LED module should be assembled to the system by using all mounting holes specified in this specification and with the specified screws.
- (2) Power supply lines should be designed as follows.  
Power supplies should always be turned on before the input signals are supplied to LED module, and the input signals should be disconnected before power supplies are turned off.  
If the sequence does not satisfy specified conditions, it may cause miss-operation of the panel.  
Refer to "2.4.2 Sequence of Power Supplies and Signals" for the detailed specification.
- (3) DO NOT GIVE high voltage to "Low Voltage" side of the FL.  
For example, DO NOT USE a floating inverter which gives high voltage to "Low Voltage" side. That's because it has a possibility to burn or smoke around the FL.
- (4) Make sure to connect correctly high-voltage wire and low-voltage wire between FL tube and inverter unit.
- (5) Input FL starting voltage( $V_{SFL}$ ) should not be less than one second.  
If it were less than one second, it may cause unstable operation of FL.  
Please adjust inverter circuit parameters, such as capacitor, resistor, to assure the display quality is maintained.  
There is a possibility that flicker is observed by the interference of LED operating signal timing and FL driving condition (especially driving frequency).
- (6) In case of severe environmental condition like outdoor usage, a proper transparent protective cover(lens) over LED module is recommended to apply in order to prevent scratches, and invasion of dust, water, etc., from the system's window onto LED module.  
Ultra-violet ray cut filter is recommended to apply onto LED module for outdoor operation. Strong ultra-violet ray may cause damage the panel.
- (7) Design the system not to display same pattern for a long time in order to prevent image sticking on the panel. Note that incorrect sequence of power supplies and input signals may cause the sticking on the panel, too.

## For Installation in Assembly

- (1) The C-MOS LSIs used in LED module are very sensitive to ESD (Electro-static Discharge).  
Ambient humidity of working area is recommended to be higher than 50%(RH).  
Person handling LED modules should be grounded with wrist band. Tools like soldering iron and screw driver, and working benches should be grounded.  
The grounding should be done through a resistor of 0.5-1MΩ in order to prevent spark of ESD.
- (2) When remove protection film from LED panel, peer off the film slowly (more than three seconds) from the edge of the panel, using a soft-pointed tweezers covered by Teflon or adherent tape.
- (3) Reduce dust level in working area. Especially the level of metal particle should be decreased.  
Use finger stalls or soft and dust-free gloves in order to keep clean appearance of LED module when handled for incoming inspection and assembly.
- Σ(4) When LED panel becomes dirty, wipe off the panel surface softly with absorbent cotton or another soft cloth.  
If necessary, breathe upon the panel surface and then wipe off immediately and softly again.  
If the dirt can not be wiped off, absorbent cotton wetted a little with normal-hexane or petroleum benzine can be used for wiping the panel.  
Be careful not to spill this solvent into the inside of LED module. Driver ICs and PCB area used inside LED module may be damaged by the solvent.
- Σ(5) AVOID THE CONDENSATION OF WATER  
Wipe off a spot or spots of water of mist and chemicals of mist on LED panel softly with absorbent cotton or another cloth as soon as possible if happened, otherwise discoloration or stain may be caused. If water invade into LED module, it may cause LED module damages.
- Σ(6) Do not expose LED module to the gas (which is not normally contained in the atmosphere), it may cause mis-operation or defects.
- Σ(7) DO NOT APPLY MECHANICAL FORCES.  
Do not bend or twist LED module even momentary when LED module is installed an enclosure of the system. Bending or twisting LED module may cause its damages.  
Make sure to design the enclosure that bending/twisting forces are not applied to LED module when it is installed in the system.  
Refrain from strong mechanical shock like dropping from the working bench or knocking against hard object.  
These may cause glass of the panel crack, damage of FL or other mis-operation.
- Σ(8) Refrain from excessive force like pushing the surface of LED panel. This may cause damage of the panel or electrical parts on PCB.
- Σ(9) Do not put heavy object such as tools, books, etc., and do not pile up LED modules.  
Be careful not to touch surface of the polarizer laminated to the panel with any hard and sharp object. The polarizer is so soft that it can easily scratched, even the protect film covers it.
- (10) When inserting or disconnecting the connectors to LED module, be sure not to apply force against PCB, nor connecting cables, otherwise internal connection of PCB and TAB drivers may be damaged.  
Do not fasten screws while putting cables like those for interface or FL between LED module and the enclosure.  
Make sure to insert the module FL connector to the inverter connector in correct position.  
If incorrect, this may cause smoke or burn of electrical parts by high voltage of FL circuit.

- (11) Be careful not to pull the FL cables of the backlight in order to avoid mechanical damage in FL lamp and soldering area. Be careful not to pull or not to hurt the FPC (Flexible Printed Circuit) cables.
- (12) Power supplies should always be turned off in assembling process.  
Do not connect or disconnect the power cables and connectors with power applied to LED module. This may cause damage of module circuit.  
The signal should be applied after power are turned on. And the signal should be removed before power supplies are turned off. (Refer to "For Designing The System"(2).)
- Σ(13) In case of LED long period operation, discoloration of light guide or optical sheet will be happened due to ultra violet and heat from LED. As the result, there is possibility to have out of specification for the optical characteristic as "5.2". But this is not irregular phenomena. Moreover, LED also has the characteristic of color shift by long period operation.

## For Transportation and Storage

- (1) Do not store LED module in high temperature, especially in high humidity for a long time (approximately more than one month).  
It is recommended to store LED module where the temperature is in the range of 0 to 35 °C and the relative humidity is lower than 70%.
- (2) Store LED module without exposure to direct sunlight or fluorescent lamps in order to prevent the module from strong ultra violet ray.
- Σ(3) Avoid condensation of water on LED module, otherwise it may cause mis-operation or defects. Keep away LED module from such ambient.
- (4) In case of transportation of storage after opening the original packing. LED module are recommended to be repacked into the original packaging with the same method, especially with same kind of desiccant.

## - CONTENTS -

Revision History	. . . .	Sheet 1
Caution and Handling Precaution	. . . .	2
1. Scope	. . . .	7
2. Product Specifications	. . . .	7
2.1 General Specifications		
2.2 Absolute Maximum Ratings		
2.3 Mechanical Specifications		
2.3.1 Weight		
2.3.2 Dimensional Outline		
2.4 Electrical Specifications		
2.4.1 Circuit Diagram		
2.4.2 Sequence of Power Supplies and Signals		
2.4.3 Timing Chart		
2.4.4 Timing Specifications		
2.4.5 Interface Connector		
2.4.6 Colors Combination Table		
3. Recommended Operating Conditions	. . . .	17
4. Electrical Characteristics	. . . .	18
4.1 Test Conditions		
4.2 Specifications		
5. Optical Characteristics	. . . .	19
5.1 Test Conditions		
5.2 Optical Specifications		
6. Quality	. . . .	20
6.1 Inspection AQL		
6.2 Test Conditions		
6.3 Dimensional Outline		
6.4 Appearance Test		
6.4.1 Test Conditions		
6.4.2 Specifications		
6.5 Display Quality		
6.5.1 Test Conditions		
6.5.2 Specifications		
6.6 Reliability Test		
6.6.1 Test Conditions		
6.6.2 Specifications		
6.7 Labels		
7. Lifetime	. . . .	25
7.1 Module		
7.2 Lamp		
7.2.1 Test Conditions		
7.2.2 Specifications		
8. Packaging	. . . .	26
8.1 Carton		
9. Warranty	. . . .	27
10. Regulation	. . . .	27
11. Measuring Method	. . . .	27
11.1 Measuring Systems		
11.2 Measuring Methods		

## 1. Scope

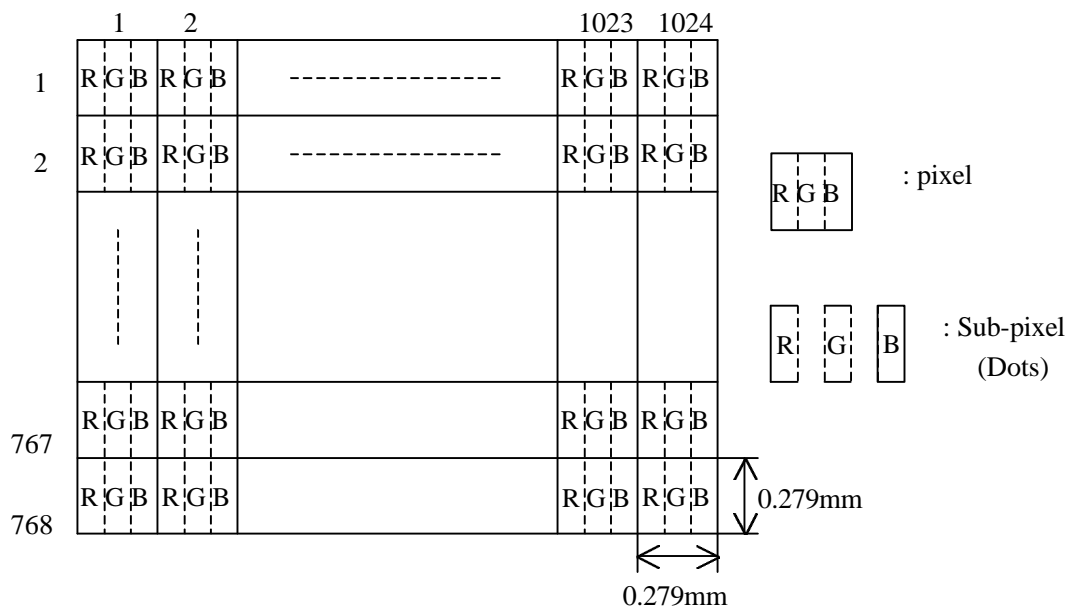
This specification is applicable to Toshiba Matsushita Display Technology's 36cm diagonal size TFT-LED module "LTD141ECEP" designed for Personal Computer.

## 2. Product Specifications

### 2.1 General Specifications

Item	Specifications
Display Mode	TN color(64 gray scales, 262,144 colors) Transmissive type, Normally white
Viewing Direction	6 o'clock (in direction of maximum contrast)
Driving Method	TFT active matrix
Input Signals	LVDS interface CLK+,CLK- IN0+,IN0- IN1+,IN1- IN2+,IN2-
Active Area	285.696 (W) × 214.272 (H) (mm)
Bezel Opening	289.4 (W) × 218.0 (H) (mm)
Number of Pixels	1024 (W) × 768 (H) <sup>1)</sup>
Pixel Pitch	0.279 (W) × 0.279 (H) (mm) <sup>1)</sup>
Pixel Arrangement	RGB vertical stripes <sup>1)</sup>
Surface Treatment	Anti-glare and hard coat 3H on LED surface
Backlight	Single cold-cathode fluorescent lamp for sidelighting
Dimensional Outline	299.0 (W) × 228.0typ. 228.6max. (H) × 6.0max. (D) (mm)

Note 1)





## 2.2 Absolute Maximum Ratings <sup>1)</sup>

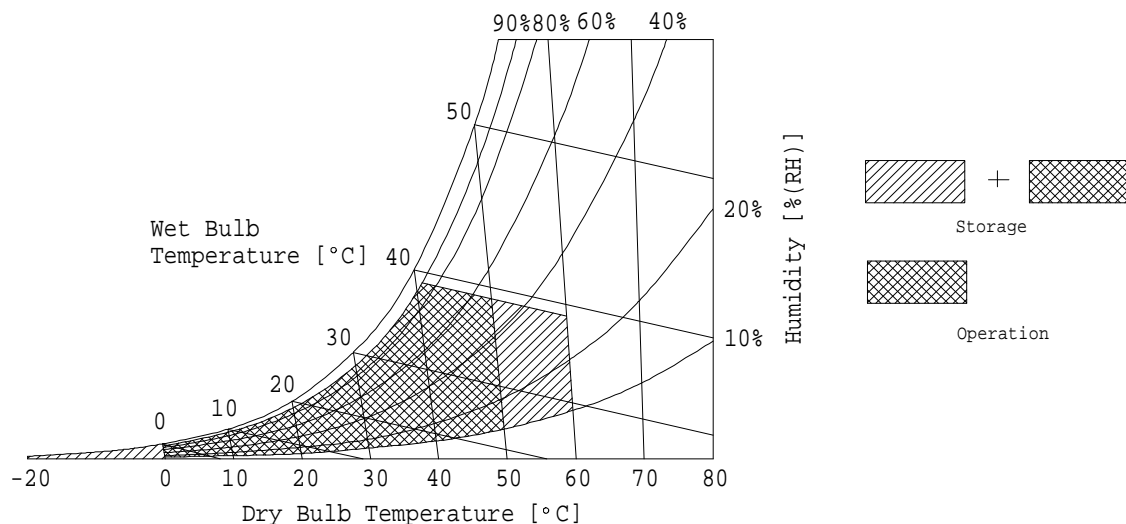
Item	Symbol	Min.	Max.	Unit	Checked Terminal <sup>4)</sup>
Supply Voltage	$V_{DD}$	-0.3	+4.0	V	$V_{DD}$ - GND
Input Voltage of Signals	$V_{IN}$	-0.3	$V_{DD}+0.3$	V	LVDS interface
FL Driving Voltage	$V_{FL}$	-	2.0	kVrms	
FL Driving Frequency	$f_{FL}$	0	100	kHz	
Operating Ambient Temperature <sup>2)</sup>	$T_{OP}$	0	+50	°C	
Operating Ambient Humidity <sup>2)</sup>	$H_{OP}$	10	90	%(RH)	
Storage Temperature <sup>2)</sup>	$T_{STG}$	-20	+60	°C	
Storage Humidity <sup>2)</sup>	$H_{STG}$	10	90	%(RH)	
Operating Temperature for Panel <sup>3)</sup>	-	0	+60	°C	

Note1) Do not exceed the maximum rating values under the worst probable conditions taking into account the supply voltage variation, input voltage variation, variation in part constants, and ambient temperature and so on. Otherwise the module may be damaged.

Note 2) Wet bulb temperature should be 39°C Max, and no condensation of water. See figure below.

Note 3) The surface temperature caused by self heat radiation of cell itself is specified on this item.

Note 4) Refer to 2.4.5



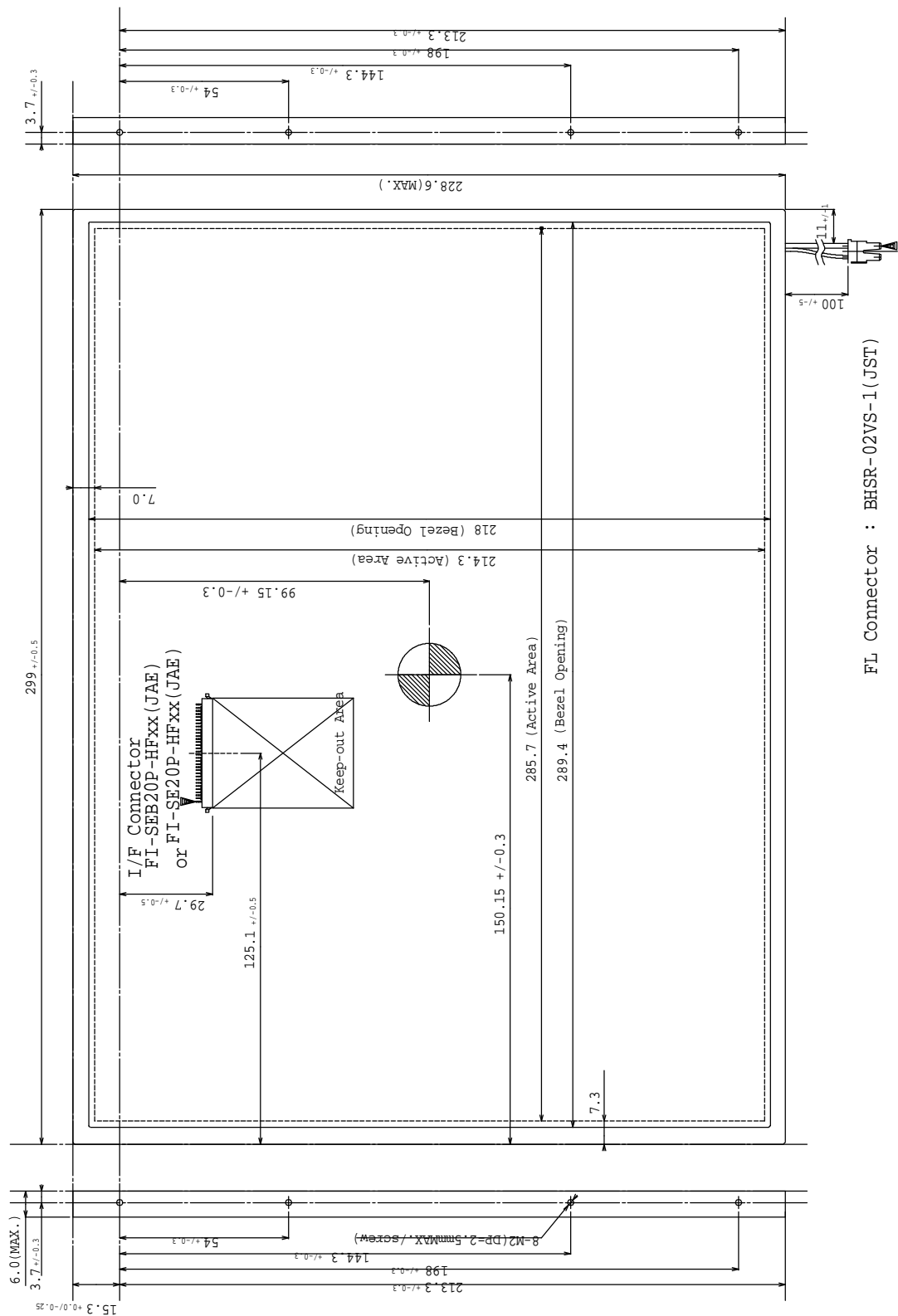
## 2.3 Mechanical Specifications

### 2.3.1 Weight

460 ± 20 (g)

### 2.3.2 Dimensional Outline (front figure)

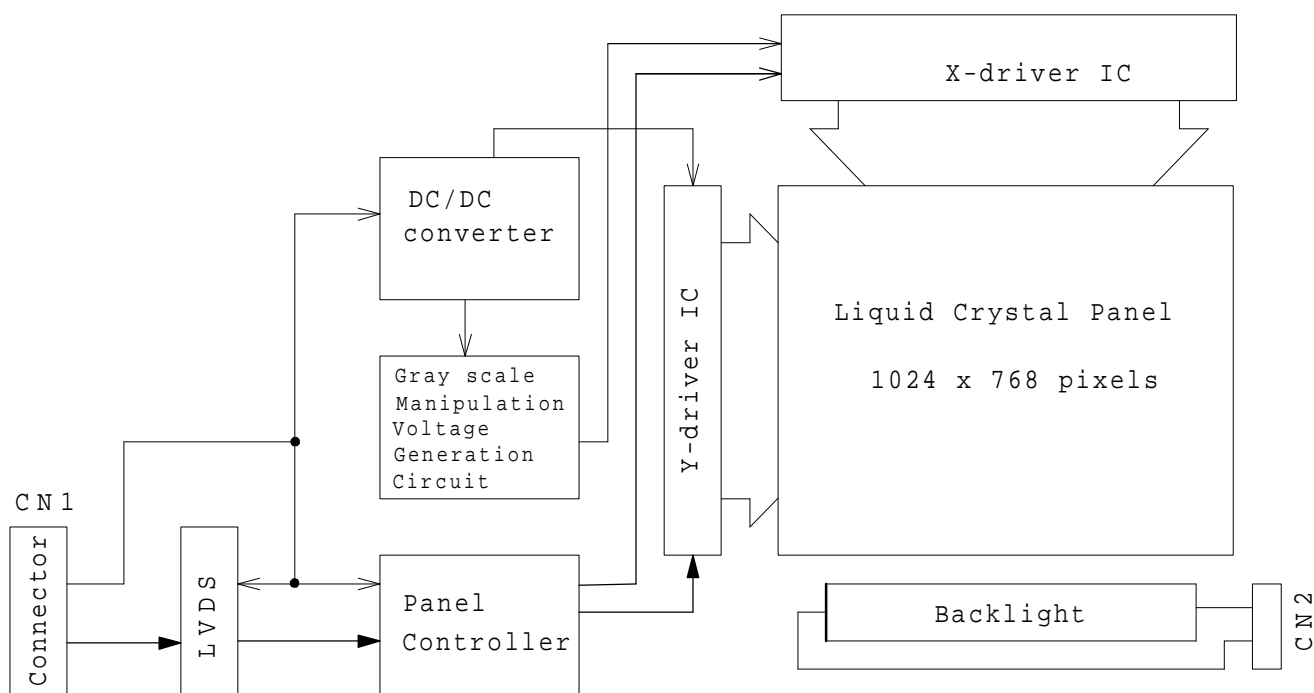
Unit : mm

Standard Tolerance:  $\pm 0.5$ 

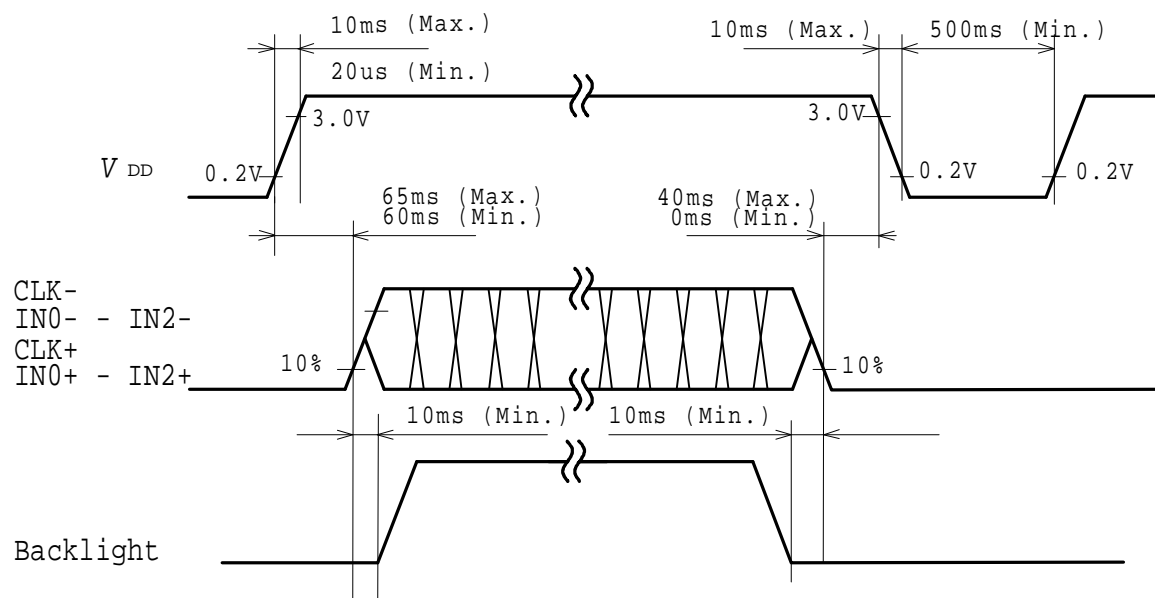
Note) If customer remove tape for fixing FL cable, Toshiba Matsushita Display Technology can not guarantee.

## 2.4 Electrical Specifications

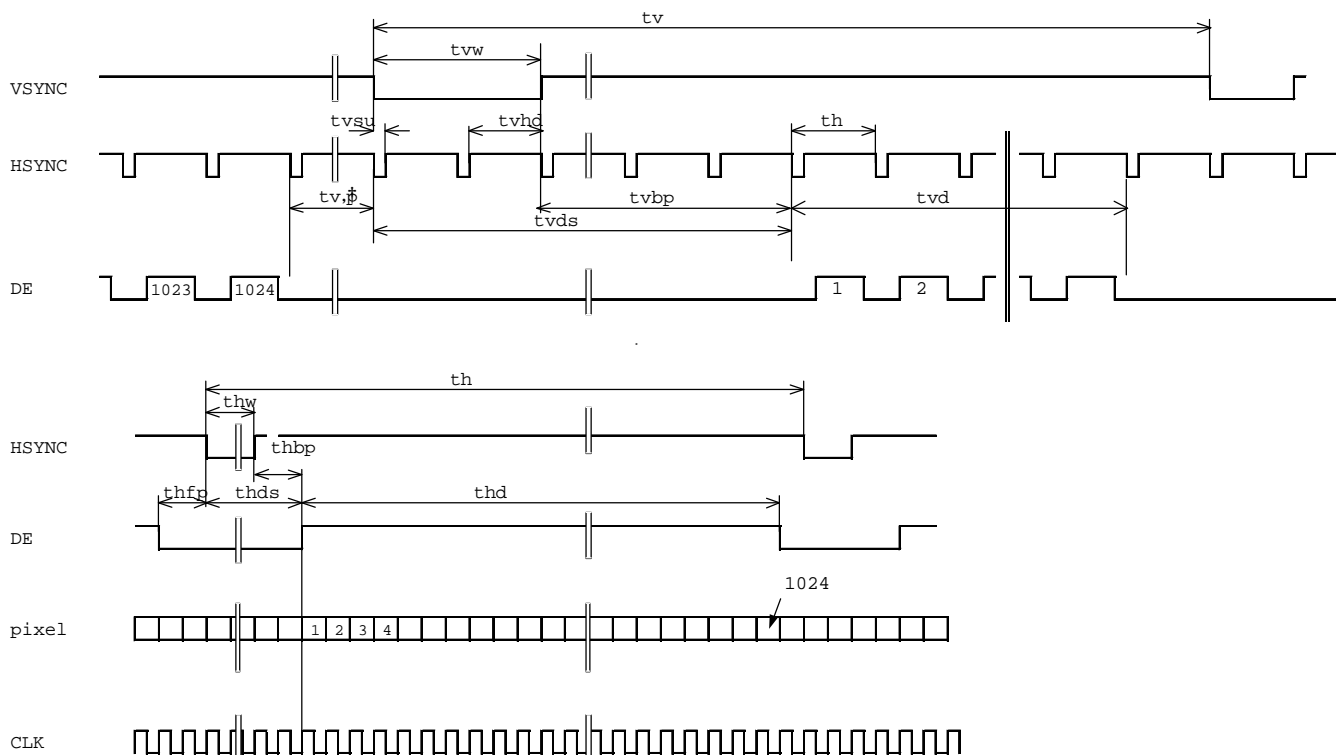
### 2.4.1 Circuit Diagram



### 2.4.2 Sequence of Power Supplies and Signals



### 2.4.3 Timing Chart



2.4.4 Timing Specifications <sup>1) 2) 3) 4) 5) 6) 7)</sup>

Item	Symbol	min.	typ.	max.	unit
Horizontal Scanning Term	$t_h$	$1334 \times t_c$	$1344 \times t_c$	-	clock
H-sync Pulse Width	$t_{hw}$	$4 \times t_c$	$136 \times t_c$	-	clock
Horizontal Front Porch	$t_{hfp}$	$4 \times t_c$	$24 \times t_c$	-	clock
Horizontal Back Porch	$t_{hbp}$	$24 \times t_c$	$160 \times t_c$	-	clock
Horizontal Data Sync Period	$t_{hds}$	$32 \times t_c$	$296 \times t_c$	-	clock
Horizontal Display Term	$t_{hd}$	$1024 \times t_c$	$1024 \times t_c$	$1024 \times t_c$	clock
Frame Period	$t_v$	$778 \times t_h$	$806 \times t_h$	$860 \times t_h$	line
V-sync Pulse Width	$t_{vw}$	$2 \times t_h$	$6 \times t_h$	-	line
V-sync Set Up Time (to H-sync)	$t_{vsu}$	$8 \times t_c$	-	-	clock
V-sync Hold Time	$t_{vhd}$	$(t_{hbp}+16) \times t_c$	-	-	clock
Vertical Front Porch	$t_{vfp}$	$1 \times t_h$	$3 \times t_h$	-	line
Vertical Back Porch	$t_{vbp}$	$2 \times t_h$	$29 \times t_h$	-	line
Vertical Data Sync Period	$t_{vds}$	$8 \times t_h$	$35 \times t_h$	-	line
Vertical Display Term	$t_{vd}$	$768 \times t_h$	$768 \times t_h$	$768 \times t_h$	line
Clock Period	$t_c$	15.0	15.38	-	ns

Note 1) Refer to "2.4.3 Timing Chart".

Note 2) If ENAB is fixed to "H" or "L" level for certain period while NCLK is supplied, the panel displays black with some flicker.

Note 3) If NCLK is fixed to "H" or "L" level for certain period while ENAB is supplied, the panel may be damaged.

Note 4) Please adjust LCD operating signal timing and FL driving frequency, to optimize the display quality.

There is a possibility that flicker is observed by the interference of LCD operating signal timing and FL driving condition (especially driving frequency), even if the condition satisfies above timing specifications and recommended operating conditions shown in 3.

Note 5) Do not make  $t_v$ ,  $t_{vd}$  and  $t_{vbp}$  fluctuate.

If  $t_v$ ,  $t_{vd}$  and  $t_{vbp}$  fluctuate, the panel displays black.

Note 6) In case of using the long frame period, the deterioration of display quantity, noise etc. may be occurred.

Note 7) NCLK count of each Horizontal Scanning Time should be always the same.

V-Blanking period should be " $n$ " X "Horizontal Scanning Time". ( $n$ : integer)

Frame period should be always the same.

## 2.4.5 Interface Connector

### CN1 INPUT SIGNAL

Connector ; FI-SEB20P-HFxx / JAE

Mating Connector : FI-S20S(housing), FI-C3-A1-15000(Contact) or FI-SE20M(FRC Type) / JAE

Terminal No.	Symbol	Function
1	V <sub>DD</sub>	POWER SUPPLY :+3.3V
2	V <sub>DD</sub>	POWER SUPPLY :+3.3V
3	V <sub>SS</sub>	GND
4	V <sub>SS</sub>	GND
5	IN0-	Transmission data of pixels 0 (negative : -)
6	IN0+	Transmission data of pixels 0 (positive : +)
7	V <sub>SS</sub>	GND
8	IN1-	Transmission data of pixels 1 (negative : -)
9	IN1+	Transmission data of pixels 1 (positive : +)
10	V <sub>SS</sub>	GND
11	IN2-	Transmission data of pixels 2 (negative : -)
12	IN2+	Transmission data of pixels 2 (positive : +)
13	V <sub>SS</sub>	GND
14	CLK-	Sampling clock (negative : - )
15	CLK+	Sampling clock (positive : + )
16	V <sub>SS</sub>	GND
17	NC	
18	NC	
19	NC	
20	NC	

Note 1) Please connect GND pin to ground. Don't use it as no-connect nor connection with high impedance.

### CN2 CCFL POWER SOURCE

Connector ; BHSR-02VS-1/JAPAN SOLDERLESS TERMINAL MFG CO., LTD.

Mating Connector : SM02B-BHS-1/JAPAN SOLDERLESS TERMINAL MFG CO., LTD.

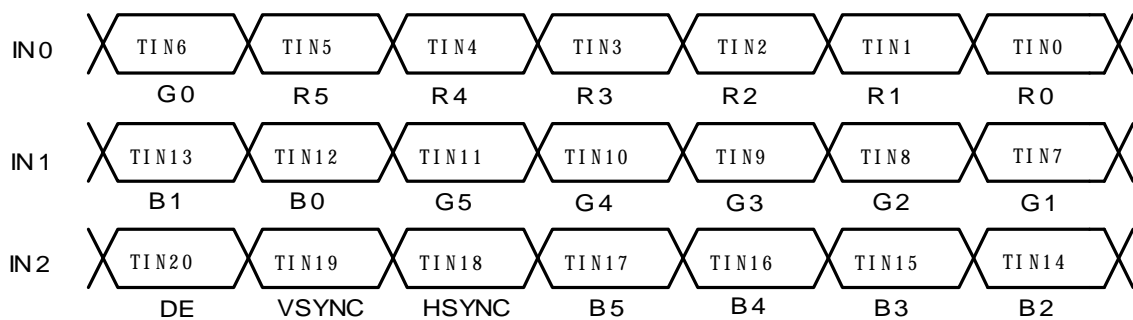
Terminal No.	Symbol	Function
1	V <sub>FLH</sub>	CCFL POWER SUPPLY (HIGH VOLTAGE)
2	V <sub>FLL</sub>	CCFL POWER SUPPLY (LOW VOLTAGE)

Note 1) 262,144 colors are displayed by the combinations of 18 bits data. (See next page)

## RECOMMENDED TRANSMITTER(DS90C363) TO LTD141ECEP INTERFACE ASSIGNMENT

**Case1: 6Bit TRANSMITTER**

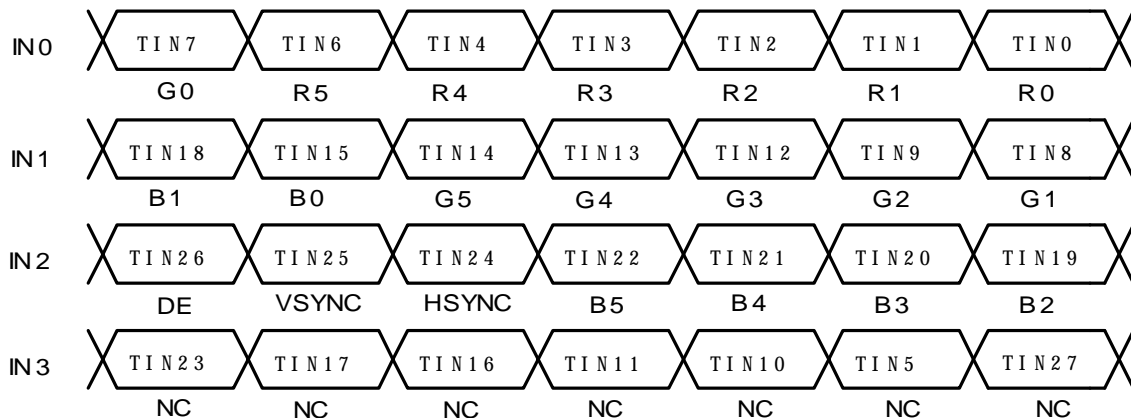
Input Terminal No.		Input Signal (Graphics controller output signal)		Output Signal Symbol	To LTD141 ECEP Interface(CN1)	
Symbol	DS90CF363	Symbol	Function		Terminal	Symbol
TIN0	44	R0	Red Pixels Display Data (LSB)	TOUT0- TOUT0+	No.5 No.6	IN0- IN0+
TIN1	45	R1	Red Pixels Display Data			
TIN2	47	R2	Red Pixels Display Data			
TIN3	48	R3	Red Pixels Display Data			
TIN4	1	R4	Red Pixels Display Data			
TIN5	3	R5	Red Pixels Display Data (MSB)			
TIN6	4	G0	Green Pixels Display Data (LSB)	TOUT1- TOUT1+	No.8 No.9	IN1- IN1+
TIN7	6	G1	Green Pixels Display Data			
TIN8	7	G2	Green Pixels Display Data			
TIN9	9	G3	Green Pixels Display Data			
TIN10	10	G4	Green Pixels Display Data			
TIN11	12	G5	Green Pixels Display Data (MSB)			
TIN12	13	B0	Blue Pixels Display Data (LSB)	TOUT2- TOUT2+	No.11 No.12	IN2- IN2+
TIN13	15	B1	Blue Pixels Display Data			
TIN14	16	B2	Blue Pixels Display Data			
TIN15	18	B3	Blue Pixels Display Data			
TIN16	19	B4	Blue Pixels Display Data			
TIN17	20	B5	Blue Pixels Display Data (MSB)			
TIN18	22	HSYNC	H-SYNC	TCLK OUT- TCLK OUT+	No.14 No.15	CLK IN- CLK IN+
TIN19	23	VSYNC	V-SYNC			
TIN20	25	DE	Compound Synchronization Signal			
CLK IN	26	NCLK	Data Sampling Clock			



## RECOMMENDED TRANSMITTER(DS90C383) TO LTD141ECEF INTERFACE ASSIGNMENT

**Case2: 8Bit TRANSMITTER**

Input Terminal No.		Input Signal (Graphics controller output signal)		Output Signal Symbol	To LED141ECEF Interface(CN1)	
Symbol	DS90CF383	Symbol	Function		Terminal	Symbol
TIN0	51	R0	Red Pixels Display Data (LSB)	TOUT0- TOUT0+	No.5 No.6	IN0- IN0+
TIN1	52	R1	Red Pixels Display Data			
TIN2	54	R2	Red Pixels Display Data			
TIN3	55	R3	Red Pixels Display Data			
TIN4	56	R4	Red Pixels Display Data			
TIN6	3	R5	Red Pixels Display Data (MSB)	TOUT1- TOUT1+	No.8 No.9	IN1- IN1+
TIN7	4	G0	Green Pixels Display Data(LSB)			
TIN8	6	G1	Green Pixels Display Data			
TIN9	7	G2	Green Pixels Display Data			
TIN12	11	G3	Green Pixels Display Data			
TIN13	12	G4	Green Pixels Display Data	TOUT2- TOUT2+	No.11 No.12	IN2- IN2+
TIN14	14	G5	Green Pixels Display Data(MSB)			
TIN15	15	B0	Blue Pixels Display Data (LSB)			
TIN18	19	B1	Blue Pixels Display Data			
TIN19	20	B2	Blue Pixels Display Data			
TIN20	22	B3	Blue Pixels Display Data	TOUT3- TOUT3+	-	-
TIN21	23	B4	Blue Pixels Display Data			
TIN22	24	B5	Blue Pixels Display Data (MSB)			
TIN24	27	HSYNC	H-SYNC			
TIN25	28	VSYNC	V-SYNC			
TIN26	30	DE	Compound Synchronization Signal	TCLK OUT- TCLK OUT+	No.14 No.15	CLK IN- CLK IN+
TIN27	50	NC	Non Connection (open)			
TIN5	2	NC	Non Connection (open)			
TIN10	8	NC	Non Connection (open)			
TIN11	10	NC	Non Connection (open)			
TIN16	16	NC	Non Connection (open)	TCLK OUT- TCLK OUT+	No.14 No.15	CLK IN- CLK IN+
TIN17	18	NC	Non Connection (open)			
TIN23	25	NC	Non Connection (open)			
CLK IN	31	NCLK	Data Sampling Clock			





## 2.4.6 Colors Combination Table

	Display	R5 R4 R3 R2 R1 R0	G5 G4 G3 G2 G1 G0	B5 B4 B3 B2 B1 B0	Gray ScaleLevel
Basic Color	Black	L L L L L L	L L L L L L	L L L L L L	-
	Blue	L L L L L L	L L L L L L	H H H H H H	-
	Green	L L L L L L	H H H H H H	L L L L L L	-
	Light Blue	L L L L L L	H H H H H H	H H H H H H	-
	Red	H H H H H H	L L L L L L	L L L L L L	-
	Purple	H H H H H H	L L L L L L	H H H H H H	-
	Yellow	H H H H H H	H H H H H H	L L L L L L	-
Gray Scale of Red	White	H H H H H H	H H H H H H	H H H H H H	-
	Black	L L L L L L	L L L L L L	L L L L L L	L 0
	Dark ↑ ↓ Light	L L L L L H	L L L L L L	L L L L L L	L 1
		L L L L H L	L L L L L L	L L L L L L	L 2
		: : :	: : :	: : :	L3... L60
		H H H H L H	L L L L L L	L L L L L L	L61
		H H H H H L	L L L L L L	L L L L L L	L62
	Red	H H H H H H	L L L L L L	L L L L L L	Red L63
Gray Scale of Green	Black	L L L L L L	L L L L L L	L L L L L L	L 0
	Dark ↑ ↓ Light	L L L L L L	L L L L L H	L L L L L L	L 1
		L L L L L L	L L L L H L	L L L L L L	L 2
		: : :	: : :	: : :	L3... L60
		L L L L L L	H H H H L H	L L L L L L	L61
		L L L L L L	H H H H H L	L L L L L L	L62
	Green	L L L L L L	H H H H H H	L L L L L L	Green L63
Gray Scale of Blue	Black	L L L L L L	L L L L L L	L L L L L L	L 0
	Dark ↑ ↓ Light	L L L L L L	L L L L L L	L L L L L H	L 1
		L L L L L L	L L L L L L	L L L L H L	L 2
		: : :	: : :	: : :	L3... L60
		L L L L L L	L L L L L L	H H H H L H	L61
		L L L L L L	L L L L L L	H H H H H L	L62
	Blue	L L L L L L	L L L L L L	H H H H H H	Blue L63
Gray Scale of White & Black	Black	L L L L L L	L L L L L L	L L L L L L	L 0
	Dark ↑ ↓ Light	L L L L L H	L L L L L H	L L L L L H	L 1
		L L L L H L	L L L L H L	L L L L H L	L 2
		: : :	: : :	: : :	L3... L60
		H H H H L H	H H H H L H	H H H H L H	L61
		H H H H H L	H H H H H L	H H H H H L	L62
	White	H H H H H H	H H H H H H	H H H H H H	White L63

Note1 L: Low level voltage, H: High level voltage

### 3. Recommended Operating Conditions <sup>1) 2) 3) 9)</sup>

Item	Symbol	Min.	Typ.	Max.	Unit	Remarks
Supply Voltage <sup>3)</sup>	$V_{DD}$	3.0	3.3	3.6	V	
Receiver Input Range <sup>2)</sup>		0	-	2.4	V	
Differential Input High Threshold <sup>2) 4)</sup>	$V_{TH}$	-	-	$(V_{OS})+0.1$	V	$V_{OS}=1.2V$ ( $V_{OS}$ :Offset Mode Voltage)
Differential Input Low Threshold <sup>2) 4)</sup>	$V_{TL}$	$(V_{OS})-0.1$	-	-	V	$V_{OS}=1.2V$ ( $V_{OS}$ :Offset Mode Voltage)
FL Input Current <sup>5) 6) 7)</sup>	$I_{FL}$	2.0	6.0	6.5	mA(rms)	
FL Driving Voltage <sup>5)</sup>	$V_{FL}$	630	680	730	V(rms)	$I_{FL}=6.0mA(rms)$ (Reference)
FL Driving Frequency <sup>5) 9)</sup>	$f_{FL}$	40	50	60	kHz	
FL Starting Voltage <sup>5) 8)</sup>	$V_{SFL}$	1500	-	1800	V(rms)	0°C

Note 1) The module should be always operated within these ranges. The "Typ." shows the recommendable value.

Note 2) Recommended LVDS transmitter: DS90C363, DS90C383 (made by National Semiconductor)

Panel Controller contains LVDS, which is based on DS90CF364MTD (made by National Semiconductor) specification.

Note 3) Checked Pin Terminal:  $V_{DD}$ , GND (0V)

Note 4) Checked Pin Terminal: IN0- CLK+, GND (0V)

Note 5) Checked Pin Terminal:  $V_{FLH}$  -  $V_{FLL}$

Note 6) If FL input current ( $I_{FL}$ ) is higher than typical value(6.0mA(rms)), then FL lifetime becomes shorter.

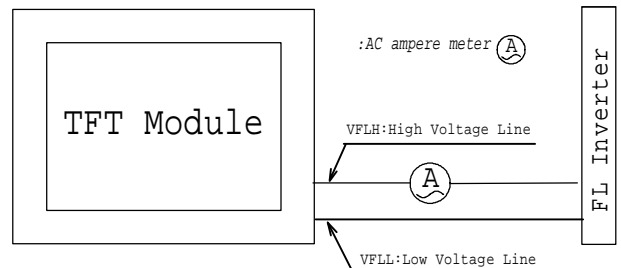
Note 7) Measuring Method of  $I_{FL}$ .

Note 8) Input FL starting voltage ( $V_{SFL}$ ) should not be less than one second.

If it were less than one second, it may cause unstable operation of FL.

Note 9) Please adjust LED operating signal timing and FL driving frequency, to optimize the display quality.

There is a possibility that flicker is observed by the interference of LED operating signal timing and FL driving condition (especially driving frequency), even if the condition satisfies above recommended operating conditions and timing specifications shown in 2.4.4.



## 4. Electrical Characteristics

### 4.1 Test Conditions

Ambient Temperature :  $T_a$  25±5°C  
 Ambient Humidity :  $H_a$  65±20%(RH)  
 Supply Voltage :  $V_{DD}$  3.3V  
 Input Signal : Refer typical value in "2.4.4 Timing Specifications".  
 FL Input Current :  $I_{FL}$  =6.0mA(rms)  
 FL Driving Frequency :  $f_{FL}$  =50kHz

### 4.2 Specifications

Item	Symbol	Min.	Typ. <sup>1) 2)</sup>	Max. <sup>3)</sup>	Unit	Remark
Current Consumption	$I_{DD}$	-	235	450	mA	$V_{DD}$ Terminal Current

Note 1) The Typical value of  $I_{DD}$  is measured in the following pattern.

1. White
2. Yellow
3. Purple
4. Red
5. Light Blue
6. Green
7. Blue
6. Black

1	2	3	4	5	6	7	8
---	---	---	---	---	---	---	---

Note 2) There are two PCB makers.

Note 3) The max. value of  $I_{DD}$  is measured in the following pattern.

R	G	B	R	G	B	R	G	B	R	G	B	R	G	B	R	G	B	
R	G	B	R	G	B	R	G	B	R	G	B	R	G	B	R	G	B	...
R	G	B	R	G	B	R	G	B	R	G	B	R	G	B	R	G	B	
						.												



Grayscale level:L7



Grayscale level:L0

## 5. Optical Characteristics

### 5.1 Test Conditions

It is same as 4.1

The measuring method is shown in 11.

### 5.2 Optical Specifications <sup>1)</sup>

Item		Symbol	Conditions	Specifications			Unit	Remark
				Min.	Typ	Max.		
Viewing Angle		$\theta$	$CR \geq 10$	$\phi = 180^\circ$	10	-	-	°
				$\phi = 0^\circ$	20	-	-	°
				$\phi = 90^\circ$	30	-	-	°
				$\phi = -90^\circ$	30	-	-	°
Contrast Ratio		CR	$\theta = 0^\circ, \phi = 0^\circ$	100	250	-	-	
Response Time		$t_{ON}$	$\theta = 0^\circ, \phi = 0^\circ$	-	-	50	ms	
		$t_{OFF}$		-	-	50	ms	
Luminance		L	$\theta = 0^\circ, \phi = 0^\circ$ Gray Scale Level=L63 (White)	120	220	-	cd/m <sup>2</sup>	$I_{FL}=6.0\text{mA(rms)}$
Chromaticity	Red	$x_R$	Gray Scale Level:L63 $\theta = 0^\circ, \phi = 0^\circ$	0.54	0.60	0.66	-	
		$y_R$		0.29	0.35	0.41	-	
	Green	$x_G$	Ditto	0.24	0.30	0.36	-	
		$y_G$		0.49	0.55	0.61	-	
	Blue	$x_B$	Ditto	0.09	0.15	0.21	-	
		$y_B$		0.08	0.14	0.20	-	
	White	$x_W$	Ditto	0.25	0.31	0.37	-	
		$y_W$		0.27	0.33	0.39	-	

Note 1) Refer to "11. Measuring Method".

Note 2) The above test limit must be applied for initial use. Characteristics will be shifted by long period operation, but it is not irregular phenomena. Theoretically brightness characteristics will be decreased due to LED degradation and color shift due to optical components change.

## 6. Quality

### 6.1 Inspection AQL

Total of Major Defects : AQL 0.65 %

Total of Minor Defects : AQL 1.5 %

Sampling Method : ANSI / ASQC Z1.4 (Level II)

### 6.2 Test Conditions

- 1) Ambient Temperature :  $25 \pm 5^{\circ}\text{C}$
- 2) Ambient Humidity :  $65 \pm 20\%(\text{RH})$
- 3) Illumination : Approximately 500 lx under the fluorescent lamp
- 4) Viewing Distance : Approximately 0.3m by the eyes of the inspector from the module
- 5) Inspection Angle :  $\theta=0^{\circ}$ ,  $\phi=0^{\circ}$

### 6.3 Dimensional Outline

The products shall conform to the dimensions specified in 2.3.2.

Definition of Major and Minor defects are as follows.

Item	Description	Class
Important Dimensions	Dimensional outline, Dimensional between the mounting holes(hinge)	Major
Others	Dimensions specified in this specifications	Minor

## 6.4 Appearance Test

### 6.4.1 Test Conditions

1) Condition : Non-operating, operating (Pattern : L63 white raster)

Same as 6.2

### 6.4.2 Specifications

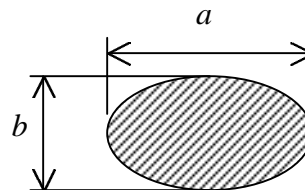
Item	Description	Class																								
PCB Appearance	Pattern peeling snapping, electrically short	Major																								
	Repair portion on PCB is not covered by epoxy resin																									
Soldering	Cold solder joint, lead move when pulled	Minor																								
Bezel, Frame, Connectors	Distinct stain, rust or scratch	Major																								
Black and White Spots/Lines <sup>1)2)</sup>	<table><tr><th>Line Width(mm)</th><th>Length(mm)</th><th>Acceptable count</th></tr><tr><td><math>W \leq 0.10</math></td><td>-</td><td>neglect</td></tr><tr><td><math>0.10 &lt; W \leq 0.15</math></td><td rowspan="2"><math>L \leq 10</math></td><td><math>n \leq 8</math></td></tr><tr><td><math>0.15 &lt; W \leq 0.20</math></td><td><math>n \leq 2</math></td></tr><tr><td><math>0.20 &lt; W</math></td><td>-</td><td>3)</td></tr></table> <table><tr><th>Average diameter(mm)</th><th>Acceptable count/side</th></tr><tr><td><math>D \leq 0.20</math></td><td>neglect</td></tr><tr><td><math>0.20 &lt; D \leq 0.50</math></td><td><math>n \leq 5</math></td></tr><tr><td><math>0.50 &lt; D \leq 1.50</math></td><td><math>n \leq 2</math></td></tr><tr><td><math>1.50 &lt; D</math></td><td>0</td></tr></table>		Line Width(mm)	Length(mm)	Acceptable count	$W \leq 0.10$	-	neglect	$0.10 < W \leq 0.15$	$L \leq 10$	$n \leq 8$	$0.15 < W \leq 0.20$	$n \leq 2$	$0.20 < W$	-	3)	Average diameter(mm)	Acceptable count/side	$D \leq 0.20$	neglect	$0.20 < D \leq 0.50$	$n \leq 5$	$0.50 < D \leq 1.50$	$n \leq 2$	$1.50 < D$	0
			Line Width(mm)	Length(mm)	Acceptable count																					
			$W \leq 0.10$	-	neglect																					
			$0.10 < W \leq 0.15$	$L \leq 10$	$n \leq 8$																					
			$0.15 < W \leq 0.20$		$n \leq 2$																					
			$0.20 < W$	-	3)																					
			Average diameter(mm)	Acceptable count/side																						
			$D \leq 0.20$	neglect																						
			$0.20 < D \leq 0.50$	$n \leq 5$																						
			$0.50 < D \leq 1.50$	$n \leq 2$																						
$1.50 < D$	0																									

Note 1) Inspection area should be within viewing area.

Note 2) Black/White Spot, Polarizer Dents and Polarizer Bubble shall be judged by "Average Diameter".

Note 3) Dusts which are bigger not less than 0.20mm ( $0.20 < W$ ) shall be judged by "Average Diameter".

Average Diameter  $D = (a+b) / 2$  (mm)



## 6.5 Display Quality

### 6.5.1 Test Conditions

- 1) Inspection Area : Within active area
- 2) Driving Condition : Same as test conditions shown in 4.1 and 6.2
- 3) Test Pattern : White display pattern (gray scale level L63), black display pattern (gray scale level L0), red display pattern (gray scale level L63), green display pattern (gray scale level L63) and blue display pattern (gray scale level L63)

### 6.5.2 Specifications <sup>4)</sup>

Item	Description / Specifications	Class
Function	No display, Malfunction	Major
Display Quality <sup>1)2)3)</sup>	Missing line	Major
	Missing Sub-Pixels <b>1) Bright defects : 15pcs. maximum</b> <b>2) Dark defects : 15pcs. maximum</b> <b>3) Total sub-pixel defects : 20pcs. maximum</b>	Minor
	<b>Various uniformity (mura) : neglect</b>	-
	Inconspicuous flicker, crosstalk, Newton's ring and other defects : neglect	-
	Black and White Spots/line	-
Backlight	Missing (Non-operating)	Major

Note 1) Defects of both color filter and black matrix are counted as bright or dark defects.

Inspection area should be within the active area.

Note 2) Bright defect means a bright spot(sub-pixel) on the display pattern of gray scale L0.

Dark defect means a dark spot(sub-pixel) on the display pattern of gray scale L63.

Note 3) Bright spot which can not be found by using 5%ND-Filter shall not be counted as a defect.

## 6.6 Reliability Test

### 6.6.1 Test Conditions

- 1) The module should be driven and inspected under normal test conditions.
- 2) The module should not have condensation of water (moisture) on the module.
- 3) The module should be inspected after two or more hours storage in normal conditions (15 - 35°C, 45 - 65%(RH)).
- 4) A module shall be used only for one test.

### 6.6.2 Specifications

The module shall have no failure in the following reliability test items.

Test Item	Test Conditions	Result
High Temperature Operation <sup>1)</sup>	50°C 192 h	3p/3p OK
High Temperature Storage <sup>2)</sup>	60°C 192 h	3p/3p OK
High Temperature and High Humidity operation <sup>1)</sup>	50°C 80% 192 h	3p/3p OK
Low Temperature Operation <sup>1)</sup>	0°C 192 h	3p/3p OK
Low Temperature Storage <sup>2)</sup>	-20°C 192 h	3p/3p OK
Temperature Shock <sup>2)</sup>	-20°C ⇔ 60°C 0.5h 0.5h 50 cycles	3p/3p OK
Mechanical Vibration <sup>2)</sup>	10 – 200 - 10Hz sweep/cycle, 1.5×9.8m/s <sup>2</sup> constant, X.Y.Z each direction, 0.5h each	3p/3p OK
Mechanical Shock <sup>2)</sup>	50×9.8m/s <sup>2</sup> , 20ms, ±X, ±Y, ±Z each direction, one time each	3p/3p OK

Note 1) Operating

Note 2) Non-Operating

Definitions of failure for judgment shall be as follows:

- 1) Function of the module should be maintained.
- 2) Current consumption should be smaller than the specified value.
- 3) Appearance and display quality should not have distinguished degradation.
- 4) Luminance should be larger than 50% of the minimum value specified in 5.2.



## 6.7 Labels

## (1) Product Label

Serial number : △△ ▲3A Z 00001

① ② ③④ ⑤

① : Module type code

② : Manufacturing code

C, K, R

③ : Lot code 3 A

(1) (2)

(1):Year code-end of the A.D.

(2):Month code-alphabet → Jan. : A - Dec. : L

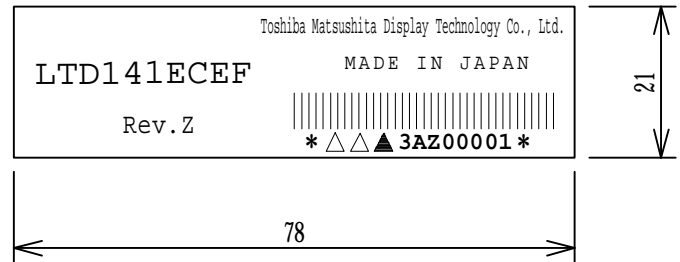
Bar code : CODE-39 High-density

(Example : 3A → 2003 JAN.)

④:Revision No.

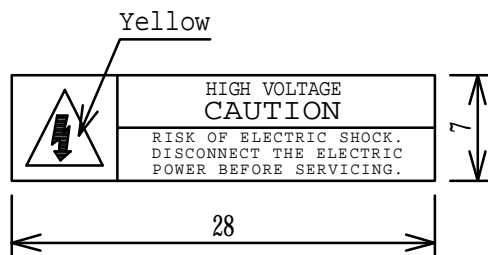
⑤: Serial code

decimal, 6 figures

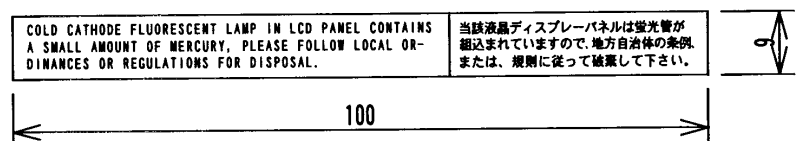


## (2) Caution Labels

## • High Voltage

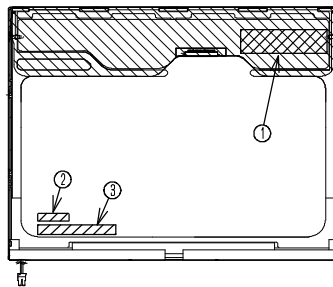
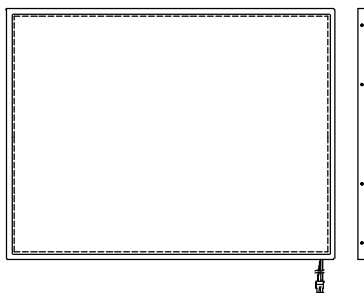


## • Disposal of LED



Unit: mm

## 3) Label Locations



1) :Product Label

2) :Caution Label

3) :Disposal of LED

## 7. Lifetime

### 7.1 Module (except lamp)

MTTF (Mean Time To Failure) : 50,000 h

(This value is not assurance time but inference value by following conditions.)

Conditions : Ambient temperature :  $25\pm 5^{\circ}\text{C}$  (No wind)

Ambient humidity : 65%(RH)

## 7.2 Lamp

### 7.2.1 Test Conditions

Ambient temperature :  $25\pm 5^{\circ}\text{C}$  (No wind)

Lamp current : 6.0mA(rms)

Lighting condition : continuous lighting

Driving frequency : 50kHz

### 7.2.2 Specifications

MTBF : 10,000 h

Definitions of failure for judgment shall be as follows.

- 1) LED luminance becomes half of the minimum value specified in 5.2.
- 2) Lamp doesn't light normally.

(Note1) In case of LED long period operation, discoloration of light guide or optical sheet will be happened due to ultra violet and heat from LED. As the result, there is possibility to have out of specification for the optical characteristics as "5.2". But this is not irregular phenomena. Moreover, LED also has the characteristic of color shift by long period operation.

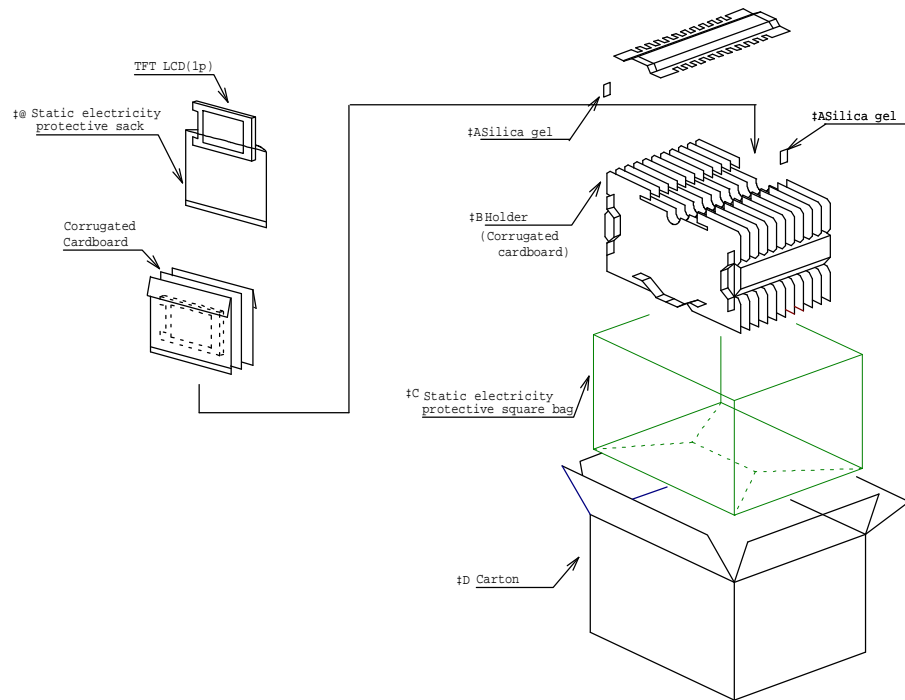
## 8. Packaging

### 8.1 Carton (internal package)

#### (1) Packaging Form

Corrugated cardboard box and polyethylene foam as shock absorber

#### (2) Packaging Method <sup>1)2)</sup>



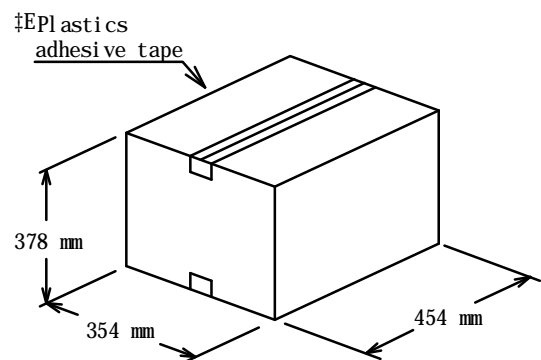
Note 1): Total weight : (Approx.) 12.2 kg

Note 2): Acceptable number of carton piling: 8 sets

Acceptable number of palette piling: 2sets

#### (3) Packaging Material

Number	Quantity	Description
①	20p	Static electricity Protective sack
②	3p	Silicagel(100g×3p)
③	1set	Holder
④	1p	Static electric Protective square bag
⑤	1p	Corrugated card box
⑥	-	Plastics adhesive tape



## 9. Warranty

Finish of warranty term is until arrival at your factory. (except defect which is clearly responsible for Toshiba Matsushita Display Technology )

## 10. Regulation

The set (which our LCD module is assembled into) to conform the regulations below, take measures in set side. Toshiba Matsushita Display Technology is not liable for the regulations to the complete set, nor can guarantee our LED module conform the regulation by itself.

### a) Examples of EMI Regulations

FCC: PART15 CLASS B

VCCI: CLASS B

CISPR : CLASS B

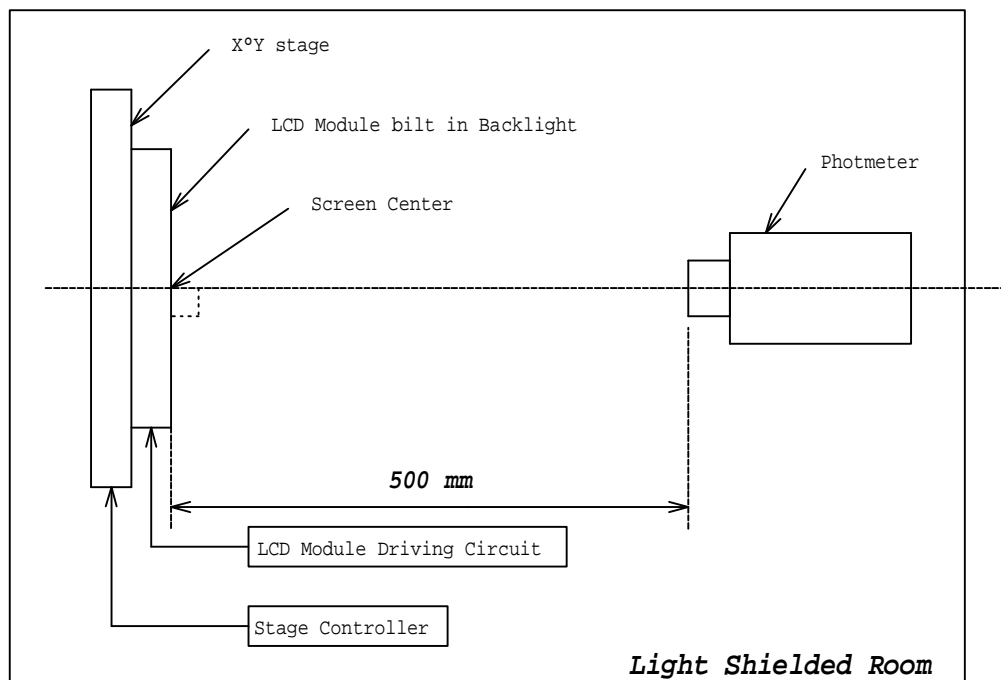
### b) Examples of Safety Regulations

IEC950

UL 1950

## 11. Measuring Method

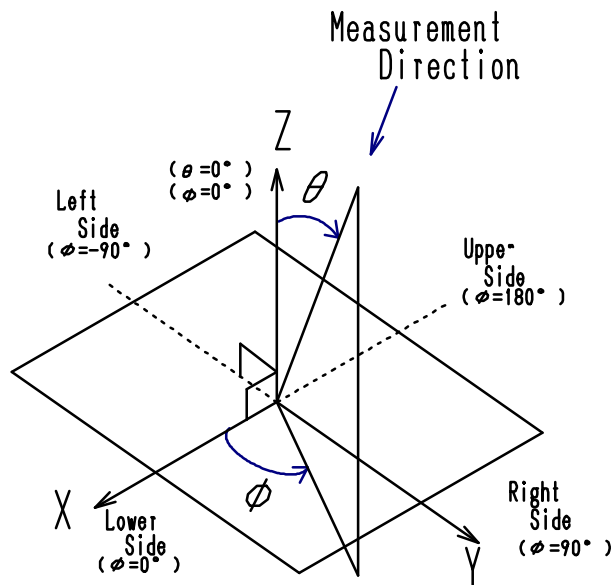
### 11.1 Measuring System



(1) The measurement point is the center of the active area except for the measurement of Luminance Uniformity.

(2) Photometer : BM-7 / BM-5A TOPCON (Aperture 2° )

(3) Definition of  $\phi$  and  $\theta$  :



## 11.2 Measuring Methods

(1) Luminance:

The luminance of the center on a white raster (gray scale level L63) shall be measured.  
Measurement shall be executed 30 minutes after the lamp is lit up.

(2) Contrast Ratio:

The contrast ratio can be calculated by the following expression.

$$\text{Contrast Ratio (CR)} = L63 / L0$$

L63 : Luminance on the white raster (gray scale level L63)

L 0 : Luminance on the black raster (gray scale level L0)

(3) Viewing Angle

Viewing angle is defined as the angles( $\theta$ ,  $\phi$ ), in which specified contrast ratio can be obtained.

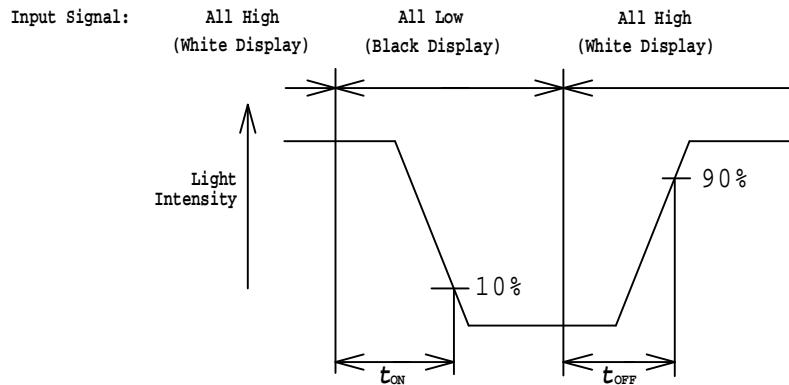
(Refer to 11.1(3) for the axes.)

## (4) Chromaticity :

The values(x,y) of chromaticity coordinates should be measured for the White, Red, Green and Blue Raster(gray scale level L63) each with a photometer.

## (5) Response Time :

The response time ( $t_{ON}$ ,  $t_{OFF}$ ) is measured with a photo detector (photodiode) which measures the light intensity of the pixels.



$t_{ON}$  : Turn on time is the time for a photo detector output waveform to go from maximum value to 10% of its maximum.

$t_{OFF}$  : Turn off time is the time for a photo detector output waveform to go from zero to 90% of its maximum.

Photodiode : S1223-01 HAMAMATSU PHOTONICS K.K.

White Display : White Raster (gray scale level L63)

Black Display : Black Raster (gray scale level L0)