

AC LINE FREQUENCY TIMER

June 2004

FEATURES:

- Selectable Timing Intervals
- Internal Voltage Regulator
- Schmitt Trigger on all inputs for high noise immunity
- Power-On-Reset
- Built-in discharge when power is removed
- Output to drive an SCR connected to load
- Output to flash an indicator when timeout has occurred
- LS6301 (DIP); LS6301-S (SOIC) - See Figure 1

DESCRIPTION:

The circuit operates by counting AC power line cycles. When the selected timeout occurs, the circuit will switch an external power device. Selectable timing intervals using 3 mode pins are indicated in Table 1. The circuit contains a Power-On-Reset (POR) to zero out all the timing counters upon power-up. A positive or negative transition of any of the A, B or C timing mode input pins will cause the timer to reset and begin again. Once time-out is achieved, it remains latched until a mode pin transition occurs or POR occurs.

TABLE 1. TIMING INTERVALS (60 Hz INPUT)

A INPUT	B INPUT	C INPUT	TIMING INTERVAL
Vss	Vss	Vss	15 Minutes
Vss	Vss	VDD	2 Minutes
Vss	VDD	Vss	30 Minutes
Vss	VDD	VDD	45 Minutes
VDD	Vss	Vss	30 Seconds
VDD	Vss	VDD	15 Minutes
VDD	VDD	Vss	1 Hour
VDD	VDD	VDD	2 Hours

PIN ASSIGNMENT - TOP VIEW

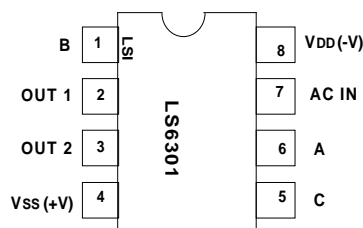


FIGURE 1

The C input mode pin contains an internal pull up resistor for directly connecting to a SPST switch. By tying either the A or B input, or both, to the C input and using the C input as the time-out selection, a maximum number of timeout combinations can be achieved.

Output 1 is normally low and goes high at the end of the selected timing interval. It produces a 1.85Hz output square wave signal and is normally used to drive an SCR with a load such as a thermal relay or a neon indicator lamp.

Output 2 is normally high and goes low at the end of the selected timing interval. The output drives an SCR whose load could be a relay, resistance heater or some other device. The load would be turned off at the end of the timing interval.

ELECTRICAL CHARACTERISTICS: Operating Temperature 0°C to 85°C

	Min	Typical	Max	Unit
Power-On-Reset	-	3.0	-	V
Hysteresis	-	0.8	-	V
Regulating Voltage	-	5.5	-	V
Timing Mode Pins:				
Pull-up current (Pin 5 only)	-	100	-	uA
Pos. Threshold Voltage (VREG = 5.5V)	-	-	4.9	V
Neg. Threshold Voltage (VREG = 5.5V)	0.7	-	-	V
AC Input Pin				
Maximum frequency	1.0	-	-	MHz
Input Current	± 10	-	-	mA
Positive Threshold Voltage (VREG = 5.5V)	-	-	4.9	V
Negative Threshold Voltage (VREG = 5.5V)	0.7	-	-	V
Hysteresis	2.0	-	-	V
Output 1 (Pin 2); Output 2 (Pin 3)				
Source Current: Vo = 0.4V; TA = 0°C to 85°C	150	-	950	uA
Sink Current: Vo = 0.4V; TA = 0°C to 85°C	3.8	-	-	mA

MAXIMUM RATINGS:

PARAMETER	SYMBOL	VALUE	UNIT
Storage Temperature	TSTG	-55 to +150	°C
Operating Temperature	TA	0 to +85	°C
DC Supply Voltage	(VDD - VSS)	+7.5	V
Voltage at any input	VIN	VSS - 0.5 to VDD + 0.5	V

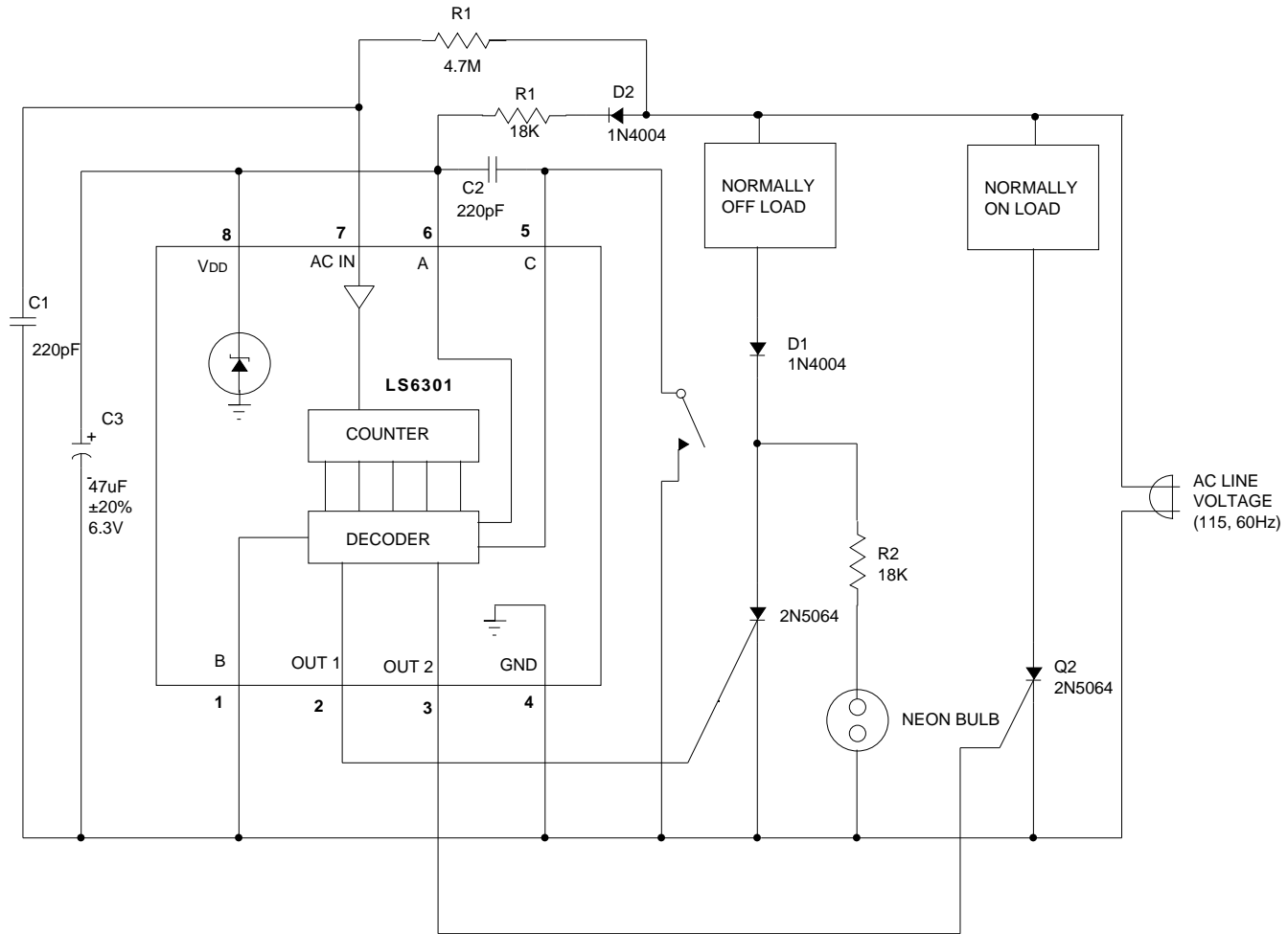


FIGURE 2. TYPICAL APPLICATION CIRCUIT

With SW in the open position, the timeout is set to 15 minutes. In the closed position, the time-out is set to 30 seconds. Any change in the switch (SW) position will cause the time-out to reset and begin again. At the end of the time-out the neon bulb will flash at a 1.875Hz rate and the normally on load will be turned off.

The information included herein is believed to be accurate and reliable. However, LSI Computer Systems, Inc. assumes no responsibilities for inaccuracies, nor for any infringements of patent rights of others which may result from its use.