

Transformers For Echelon® Neuron® ICS

Link-PP Int'l Technology

- ※Developed for Use with 3120™ & 3150™ Chips Produced by Motorola and Toshiba
- ※Provides 1500 Vrms isolation for 1 minute
- ※For RoHS part add suffix NL
- ※RoHS NL peak solder rating 235°C



Electrical Specifications @ 25°C--- Operating Temperature -40°C to + 85°C

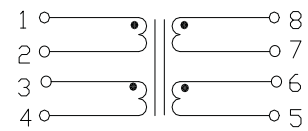
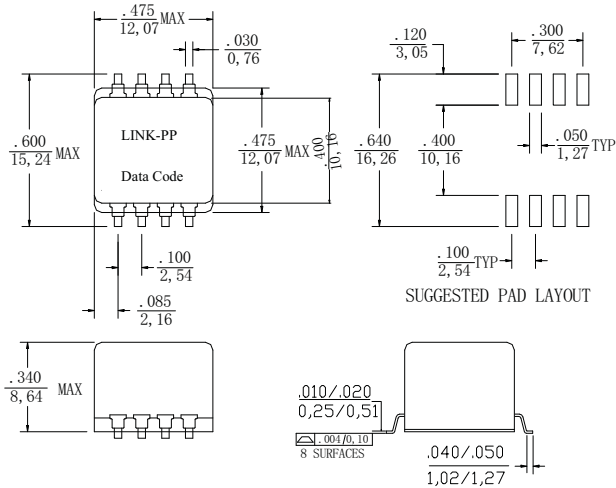
Part Number	Turns Ratio (±2%)	Primary Inductance (mH)	DCR Primary (Ω MAX)	DCR Secondary (Ω MAX)	Primary Pins (Network Side)	Package
LPS85848	ICS:ICS	3.5-6.5	1.0	1.0	8-5	Surface Mount
LPS85948	ICT:ICT	3.5-6.5	1.0	1.0	2-6	Through Hole

*CS = center split , CT = center tap

Mechanical

Schematic

LPS85848



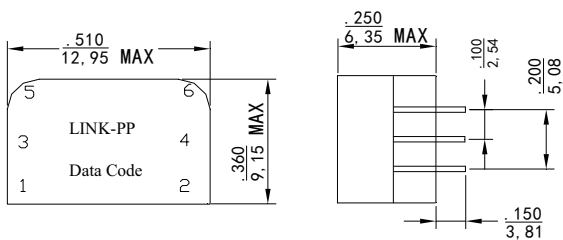
Dimensions: INCHES

Unless otherwise specified,
all tolerances are $\pm \frac{.010}{0,25}$

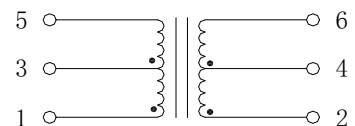
Mechanical

Schematic

LPS85948



LEADS ARE
24 AWG SOLDERABLE



Dimensions: Inches

Unless otherwise specified all
tolerances are $\pm \frac{.010}{0,25}$