



深圳市拓普微科技开发有限公司

SHENZHEN TOPWAY TECHNOLOGY CO., LTD.

LMT080DIEFWU-NBA

LCD Module User Manual

Prepared by: Wei Date: 2017-07-25	Checked by: Date:	Approved by: Date:
--	----------------------------------	-----------------------------------

Rev.	Descriptions	Release Date
0.1	Preliminary release	2015-05-06
0.2	Update 6. AC Characteristics	2017-07-25

Table of Content

1. General Specification	3
2. Block Diagram.....	3
3. Terminal Function.....	4
3.1 Input/output Terminal (K3)	4
3.2 Input Terminal (K1)	5
3.3 Touch Panel Terminal (K2)	5
4. Absolute Maximum Ratings.....	5
5. Electrical Characteristics	5
5.1 DC Characteristics	5
5.2 Touch panel Characteristics.....	6
6. AC Characteristics.....	7
6.1 Timing Characteristics.....	7
6.2 Recommended Timing Setting Of TCON	8
7. Optical Characteristics.....	9
8. Precautions of using LCD Modules	11

1. General Specification

Signal Interface :	Digital 18-bit RGB
Display Technology :	a-Si TFT active matrix
Display Mode :	Transmissive / Normal White
Screen Size(Diagonal) :	8.0"
Outline Dimension :	183.0 x 141.0 x12.8 MAX (mm) (see attached drawing for details)
Active Area :	162.0 x 121.5 (mm)
Number of dots :	800 x 3 (RGB) x 600
Pixel Pitch :	0.2025 x 0.2025 (mm)
Pixel Configuration :	RGB Stripe
Backlight :	LEDs
Viewing Direction :	6 o'clock (Gray scale Inversion) (*1) 12 o'clock (*2)
Touch Panel:	4-wire resistive
Operating Temperature :	-20 ~ +70°C
Storage Temperature :	-30 ~ +80°C
Surface Treatment :	Anti-Glare Surface

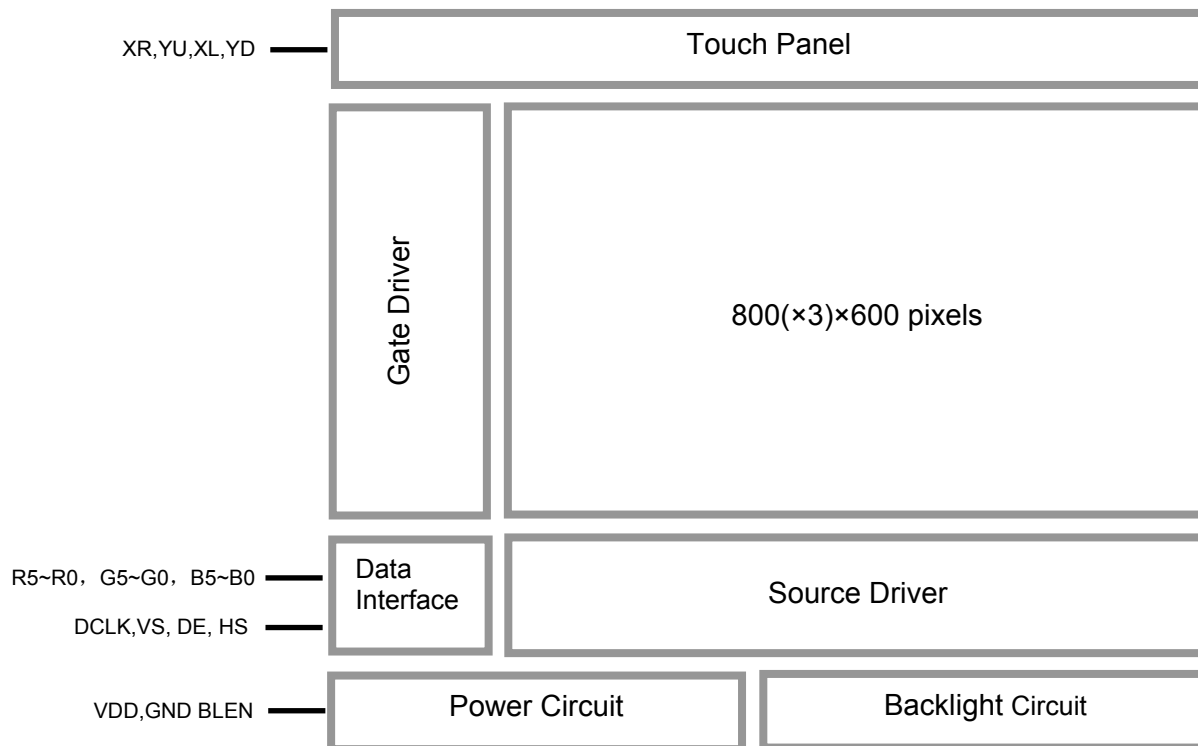
Note:

*1. For saturated color display content (eg. pure-red, pure-green, pure-blue or pure-colors -combinations).

*2. For "color scales" display content.

*3. Color tone may slightly change by temperature and driving condition.

2. Block Diagram



3. Terminal Function

3.1 Input/output Terminal (K3)

Pin No.	Pin Name	I/O	Descriptions
1	GND	Power	Power Supply GND (0V)
2	GND	Power	Power Supply GND (0V)
3	VS	Input	Vertical Sync Input
4	NC	-	NO connection
5	NC	-	NO connection
6	NC	-	NO connection
7	NC	-	NO connection
8	HS	Input	Horizontal Sync Input
9	DE	Input	Data Input Enable
10	GND	Power	Power Supply GND (0V)
11	GND	Power	Power Supply GND (0V)
12	GND	Power	Power Supply GND (0V)
13	B5	Input	Blue data
14	B4	Input	Blue data
15	B3	Input	Blue data
16	GND	Power	Power Supply GND (0V)
17	B2	Input	Blue data
18	B1	Input	Blue data
19	B0	Input	Blue data
20	GND	Power	Power Supply GND (0V)
21	G5	Input	Green data
22	G4	Input	Green data
23	G3	Input	Green data
24	GND	Power	Power Supply GND (0V)
25	G2	Input	Green data
26	G1	Input	Green data
27	G0	Input	Green data
28	GND	Power	Power Supply GND (0V)
29	R5	Input	Red data
30	R4	Input	Red data
31	R3	Input	Red data
32	GND	Power	Power Supply GND (0V)
33	R2	Input	Red data
34	R1	Input	Red data
35	R0	Input	Red data
36	GND	Power	Power Supply GND (0V)
37	GND	Power	Power Supply GND (0V)
38	DCLK	Input	Sample clock
39	GND	Power	Power Supply GND (0V)
40	GND	Power	Power Supply GND (0V)

3.2 Input Terminal (K1)

Pin No.	Pin Name	I/O	Descriptions
1	VDD	Power	Positive Power Supply (3.3V)
2	GND	Power	Power Supply GND (0V)
3	BLEN	Input	Backlight dimming control (*1, *2) PWM may be used to adjust the output brightness(Active High)

Note:

*1. With built in pull up resistor, it could leave open

*2. Recommended PWM Freq. = 3kHz (active high)

3.3 Touch Panel Terminal (K2)

Pin No.	Pin Name	I/O	Descriptions
1	XR	Passive	Right Side sense Terminal
2	YD	Passive	Down Side sense Terminal
3	XL	Passive	Left Side sense Terminal
4	YU	Passive	Up Side sense Terminal

4. Absolute Maximum Ratings

VDD=3.3V, GND=0V, Ta=25°C

Items	Symbol	Min.	Max.	Unit	Condition
Power Supply Voltage	VDD	-0.3	3.6	V	GND = 0V
Backlight Forward Current	I _{LED}	-	25	mA	For each LED
Operating Temperature	T _{OP}	-20	70	°C	No Condensation
Storage Temperature	T _{ST}	-30	80	°C	No Condensation

Cautions:

Any Stresses exceeding the Absolute Maximum Ratings may cause substantial damage to the device. Functional operation of this device at other conditions beyond those listed in the specification is not implied and prolonged exposure to extreme conditions may affect device reliability.

5. Electrical Characteristics

5.1 DC Characteristics

VDD=3.3V, GND=0V, Ta=25°C

Items	Symbol	Min.	Typ.	Max.	Unit	Remark
Power voltage	VDD	3.1	3.3	3.6	V	*1
Input logic high voltage	V _{IH}	0.7V _{cc}	-	V _{cc}	V	*2
Input logic low voltage	V _{IL}	0	-	0.3V _{cc}	V	
VDD Power Consumption	I _{VDD}	-	500	-	mA	

Note:

*1: VCC setting should match the signals output voltage (refer to Note 3) of customer's system board.

*2: DCLK,HS,VS,RESET,U/D, L/R,DE,R0~R7,G0~G7,B0~B7,MODE,DITHB.

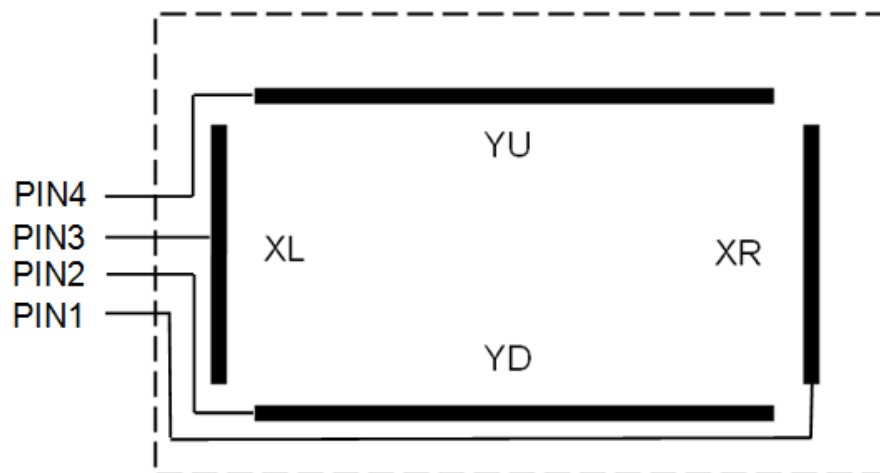
5.2 Touch panel Characteristics

Items	MIN.	TYP.	MAX.	Unit	Note
Operating Voltage	-	5.0	-	V	-
Operating Force	60	-	100	g	-
Life Time	-	1,000,000	-	times	-
X Resistance	100	-	840	Ω	-
Y Resistance	260	-	1240	Ω	

Cautions:

Exceeding the recommended Condition could cause substantial damage to the touch panel and shorten its lifetime.

Touch Panel Logic Details



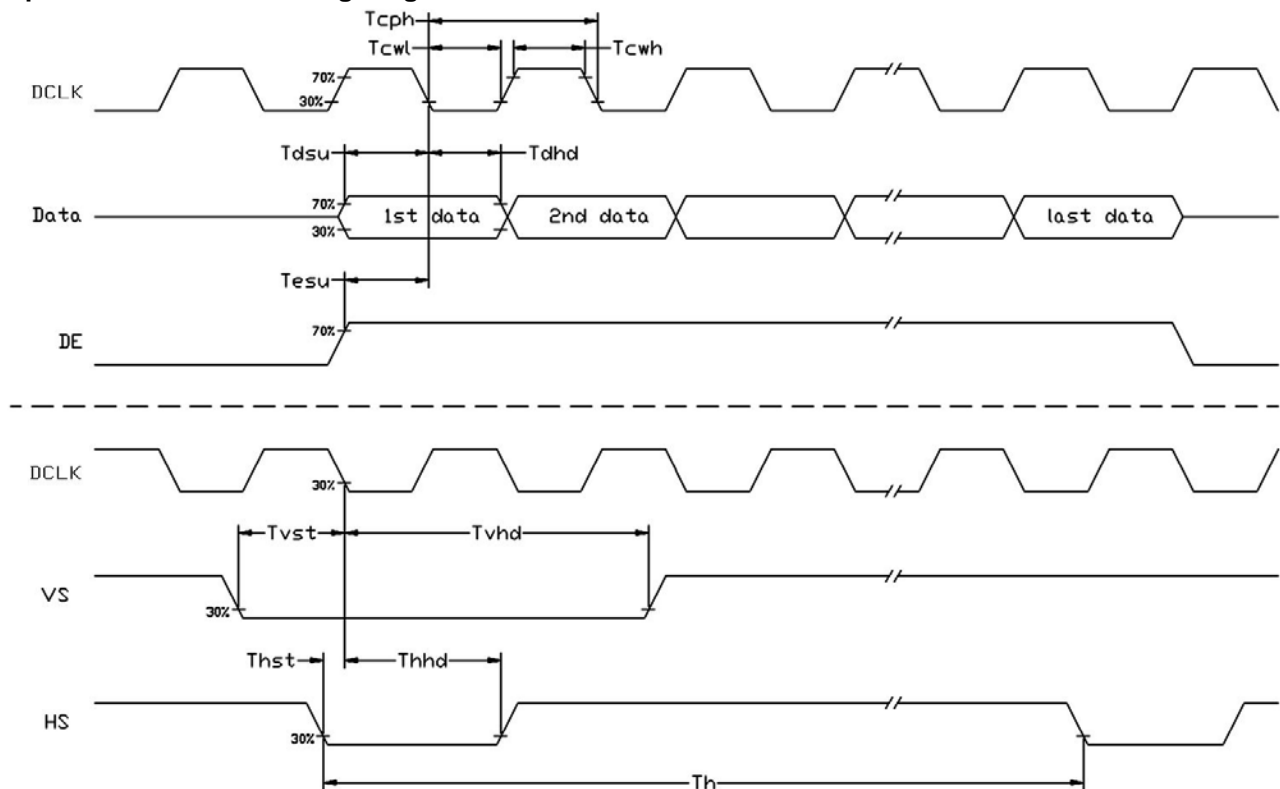
6. AC Characteristics

6.1 Timing Characteristics

VDD=3.3V, GND=0V, Ta=25°C

Item	Symbol	MIN.	TYP.	MAX.	Unit	Remark
VDD Power On Slew rate	T _{POR}	-	-	20	ms	From 0V to 90% VDD
GRB pulse width	T _{GRB}	50	-	-	us	DCLK=65MHz
DCLK Cycle Time	T _{cph}	14	-	-	ns	
DCLK Pulse Width	T _{cw}	40	50	60	%	
VSD Setup Time	T _{vst}	5	-	-	ns	
VSD Hold Time	T _{vhd}	5	-	-	ns	
HSD Setup Time	T _{hst}	5	-	-	ns	
HSD Hold Time	T _{hhd}	5	-	-	ns	
Data Setup Time	T _{dsu}	5	-	-	ns	Data to DCLK
Data Hold Time	T _{dhd}	5	-	-	ns	Data to DCLK
DE Setup Time	T _{esu}	5	-	-	ns	
DE Hold Time	T _{ehd}	5	-	-	ns	

Input Clock and Data timing Diagram:



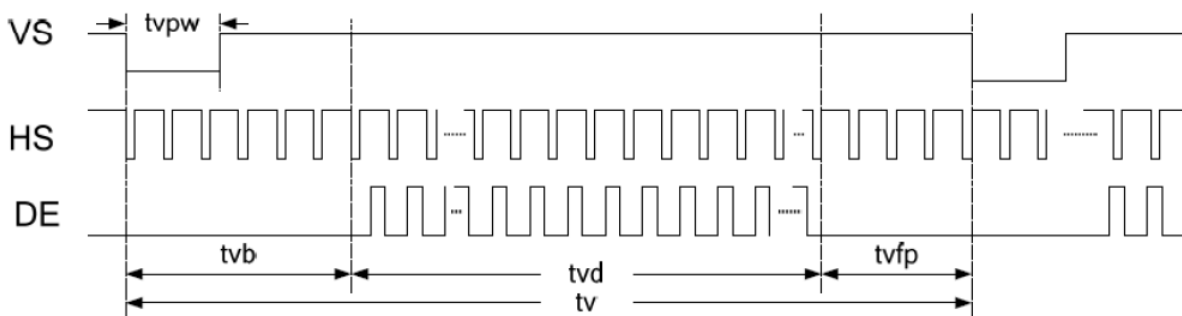
6.2 Recommended Timing Setting Of TCON

VDD=3.3V, GND=0V, Ta=25°C

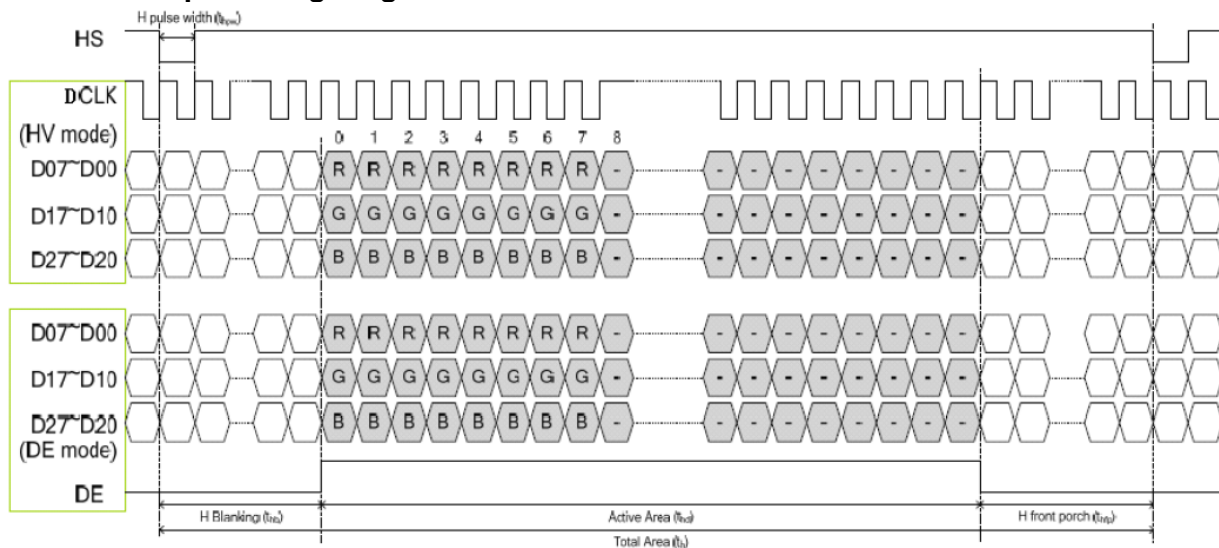
Parameter	Symbol	Min	Typ	Max	Unit	Remark
DCLK	F _{clk}	34.5	39.6	50.4	MHz	
	t _{clk}	-	25.3	-	ns	
HSD	t _h	900	1000	1200	DCLK	
	t _{hd}	-	800	-	DCLK	
	t _{hpw}	1	-	40	DCLK	
	t _{hb}	-	88	-	DCLK	
	t _{hfp}	12	112	312	DCLK	
VSD	t _v	640	660	700	th	
	t _{vd}	-	600	-	th	
	t _{vpw}	1	-	20	th	
	t _{vb}	-	39	-	th	
	t _{vfp}	1	21	61	th	

Note: DE timing refer to HSD, VSD input timing.

Vertical input timing Diagram:



Horizontal input timing Diagram:



7. Optical Characteristics

Test Conditions:

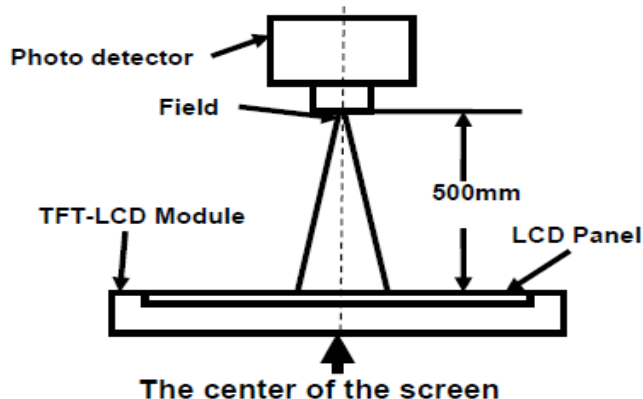
1. The test systems refer to Note 1 and Note 2.

Ta=25°C

Item		Symbol	Condition	MIN.	TYP.	MAX.	UNIT	Note.
Viewing angle (CR≥10)		θ _L	9 o'clock	60	70	-	degree	Note 2
		θ _R	3 o'clock	60	70	-		
		θ _T	12 o'clock	50	60	-		
		θ _B	6 o'clock	60	70	-		
Response Time		T _f	25℃	-	25	30	ms	Note 1 Note 4
		T _r					ms	
Contrast ratio		CR	θ=0°	600	800	-	-	Note 1,3
Color chromaticlty	White	X	Backlight is on	0.253	0.303	0.353		Note 1 Note 5
		Y		0.257	0.307	0.357		
	Red	X		0.525	0.575	0.625		
		Y		0.296	0.346	0.396		
	Green	X		0.298	0.348	0.398		
		Y		0.527	0.577	0.627		
	Blue	X		0.101	0.151	0.201		
		Y		0.031	0.081	0.131		
Luminance		L		-	150	-	cd/m ²	Note 1,6
Luminance uniformity		Y _U		70	75	-	%	Note 1,7

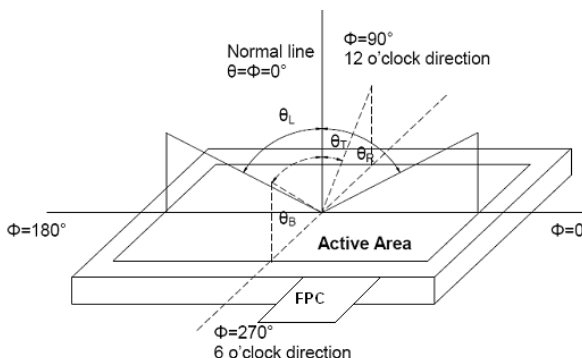
Note 1: Definition of optical measurement system.

The optical characteristics should be measured in dark room. After 5 Minutes operation, the optical properties are measured at the center point of the LCD screen. All input terminals LCD panel must be ground when measuring the center area of the panel.



Item	Photo detector	Field
Contrast Ratio	BM-5A	1°
Luminance		
Lum Uniformity		
Chromaticity	SR-3A	-
Response Time	TRD100	

Note 2: Definition of viewing angle range

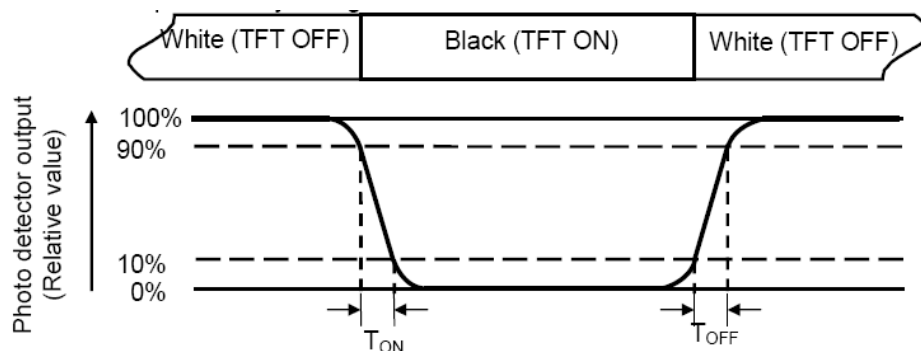


Note 3: Definition of contrast ratio

$$\text{Contrast ratio (CR)} = \frac{\text{Luminance measured when LCD is on the "White" state}}{\text{Luminance measured when LCD is on the "Black" state}}$$

Note 4: Definition of Response time

The response time is defined as the LCD optical switching time interval between "White" state and "Black" state. Rise time (T_{ON}) is the time between photo detector output intensity changed from 90% to 10%. And fall time (T_{OFF}) is the time between photo detector output intensity changed from 10% to 90%.



Note 5: Definition of color chromaticity (CIE1931)

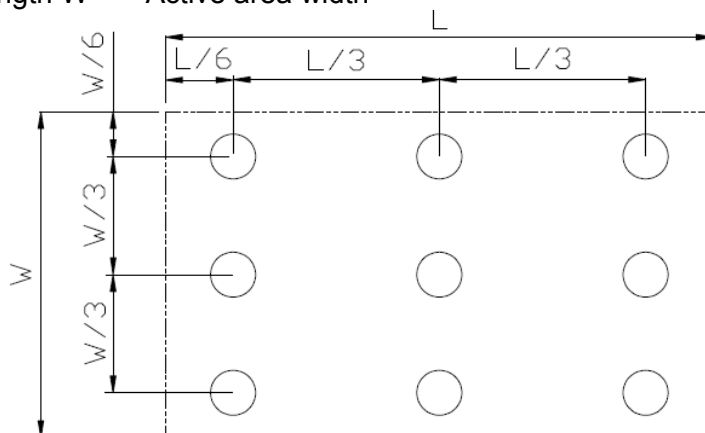
Color coordinates measured at center point of LCD.

Note 6: Definition of Luminance Uniformity

Active area is divided into 9 measuring areas (Refer Fig. 2). Every measuring point is placed at the center of each measuring area.

$$\text{Luminance Uniformity (U)} = L_{\min} / L_{\max}$$

L-----Active area length W----- Active area width



L_{\max} : The measured Maximum luminance of all measurement position.

L_{\min} : The measured Minimum luminance of all measurement position.

Note 7: Definition of Luminance:

Measure the luminance of white state at center point.

8. Precautions of using LCD Modules

Mounting

- Mounting must use holes arranged in four corners or four sides.
- The mounting structure so provide even force on to LCD module. Uneven force (ex. Twisted stress) should not applied to the module. And the case on which a module is mounted should have sufficient strength so that external force is not transmitted directly to the module.
- It is suggested to attach a transparent protective plate to the surface in order to protect the polarizer. It should have sufficient strength in order to the resist external force.
- The housing should adopt radiation structure to satisfy the temperature specification.
- Acetic acid type and chlorine type materials for the cover case are not desirable because the former generates corrosive gas of attacking the polarizer at high temperature and the latter causes circuit break by electro-chemical reaction.
- Do not touch, push or rub the exposed polarizers with glass, tweezers or anything harder than HB pencil lead. Never rub with dust clothes with chemical treatment. Do not touch the surface of polarizer for bare hand or greasy cloth.(Some cosmetics deteriorate the polarizer.)
- When the surface becomes dusty, please wipe gently with absorbent cotton or other soft materials like chamois soaks with petroleum benzine. Normal-hexane is recommended for cleaning the adhesives used to attach front / rear polarizers. Do not use acetone, toluene and alcohol because they cause chemical damage to the polarizer.
- Wipe off saliva or water drops as soon as possible. Their long time contact with polarizer

Operating

- The spike noise causes the mis-operation of circuits. It should be within the $\pm 200\text{mV}$ level (Over and under shoot voltage)
- Response time depends on the temperature.(In lower temperature, it becomes longer.)
- Brightness depends on the temperature. (In lower temperature, it becomes lower.) And in lower temperature, response time(required time that brightness is stable after turned on) becomes longer.
- Be careful for condensation at sudden temperature change. Condensation makes damage to polarizer or electrical contacted parts. And after fading condensation, smear or spot will occur.
- When fixed patterns are displayed for a long time, remnant image is likely to occur.
- Module has high frequency circuits. Sufficient suppression to the electromagnetic interference shall be done by system manufacturers. Grounding and shielding methods may be important to minimized the interference

Electrostatic Discharge Control

Since a module is composed of electronic circuits, it is not strong to electrostatic discharge. Make certain that treatment persons are connected to ground through wrist band etc. And don't touch interface pin directly.

Strong Light Exposure

Strong light exposure causes degradation of polarizer and color filter.

Storage

When storing modules as spares for a long time, the following precautions are necessary.

- Store them in a dark place. Do not expose the module to sunlight or fluorescent light. Keep the temperature between 5°C and 35°C at normal humidity.
- The polarizer surface should not come in contact with any other object. It is recommended that they be stored in the container in which they were shipped.

Protection Film

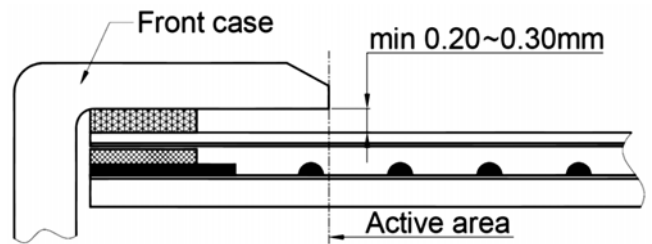
- When the protection film is peeled off, static electricity is generated between the film and polarizer. This should be peeled off slowly and carefully by people who are electrically grounded and with well ion-blown equipment or in such a condition, etc.
- The protection film is attached to the polarizer with a small amount of glue. If some stress is applied to rub the protection film against the polarizer during the time you peel off the film, the glue is apt tore main on the polarizer. Please carefully peel off the protection film without rubbing it against the polarizer.
- When the module with protection film attached is stored for a long time, sometimes there remains a very small amount of glue still on the polarizer after the protection film is peeled off.
- You can remove the glue easily. When the glue remains on the polarizer surface or its vestige is recognized, please wipe them off with absorbent cotton waste or other soft material like chamois soaked with normal-hexane.

Transportation

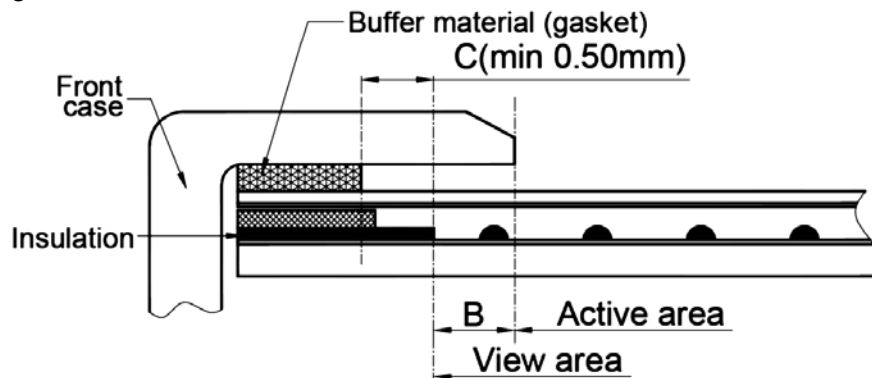
The LCD modules should be no falling and violent shocking during transportation, and also should avoid excessive press, water, damp and sunshine.

附录: Touch panel Design Precautions

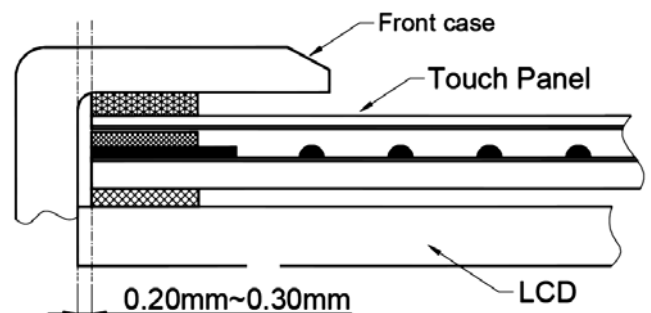
1. It should prevent front case touching the touch panel Active Area (A.A.) to prevent abnormal touch.
It should left gab (e.g. 0.2~0.3mm) in between.



2. Outer case design should take care about the area outside the A.A.
Those areas contain circuit wires which is having different thickness. Touching those areas could deform the ITO film. As a result case the ITO cold be damaged and shorten its lifetime.
It is suggested to protect those areas with gasket (between the front case and the touch panel).
The suggested figures are $B \geq 0.50\text{mm}$; $C \geq 0.50\text{mm}$.



3. The front case side wall should keep space (e.g. 0.2 ~ 0.3mm) from the touch panel.



4. In general design,
touch panel V.A. should be bigger than the LCD V.A.
and touch panel A.A. should be bigger than the LCD A.A.

