

May 1999

LM3940 1A Low Dropout Regulator for 5V to 3.3V Conversion

## LM3940

### 1A Low Dropout Regulator for 5V to 3.3V Conversion

#### General Description

The LM3940 is a 1A low dropout regulator designed to provide 3.3V from a 5V supply.

The LM3940 is ideally suited for systems which contain both 5V and 3.3V logic, with prime power provided from a 5V bus.

Because the LM3940 is a true low dropout regulator, it can hold its 3.3V output in regulation with input voltages as low as 4.5V.

The TO-220 package of the LM3940 means that in most applications the full 1A of load current can be delivered without using an additional heatsink.

The surface mount TO-263 package uses minimum board space, and gives excellent power dissipation capability when soldered to a copper plane on the PC board.

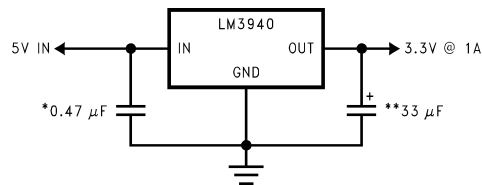
#### Features

- Output voltage specified over temperature
- Excellent load regulation
- Guaranteed 1A output current
- Requires only one external component
- Built-in protection against excess temperature
- Short circuit protected

#### Applications

- Laptop/Desktop Computers
- Logic Systems

#### Typical Application

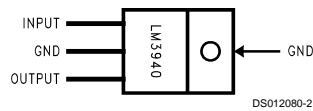


DS012080-1

\*Required if regulator is located more than 1" from the power supply filter capacitor or if battery power is used.

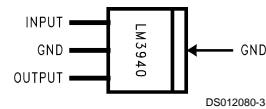
\*\*See Application Hints.

Connection Diagram/Ordering Information



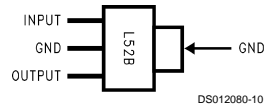
DS012080-2

**3-Lead TO-220 Package**  
(Front View)  
Order Part Number LM3940IT-3.3  
NSC Drawing Number TO3B



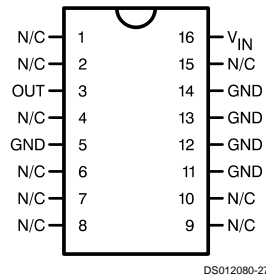
DS012080-3

**3-Lead TO-263 Package**  
(Front View)  
Order Part Number LM3940IS-3.3  
NSC Drawing Number TS3B



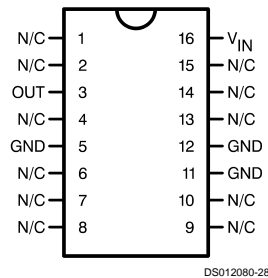
DS012080-10

**3-Lead SOT-223**  
(Front View)  
Order Part Number LM3940IMP-3.3  
Package Marked L52B  
NSC Drawing Number MA04A



DS012080-27

**16-Lead Ceramic Dual-in-Line Package**  
(Top View)  
Order Part Number LM3940J-3.3-QML  
5962-9688401QEA  
NSC Drawing Number J16A



DS012080-28

**16-Lead Ceramic Surface-Mount Package**  
(Top View)  
Order Part Number LM3940WG-3.3-QML  
5962-9688401QXA  
NSC Drawing Number WG16A

**Absolute Maximum Ratings** (Note 1)

If Military/Aerospace specified devices are required, please contact the National Semiconductor Sales Office/ Distributors for availability and specifications.

Storage Temperature Range  $-65^{\circ}\text{C}$  to  $+150^{\circ}\text{C}$

Operating Junction Temperature Range  $-40^{\circ}\text{C}$  to  $+125^{\circ}\text{C}$

Lead Temperature (Soldering, 5 seconds)  $260^{\circ}\text{C}$

Power Dissipation (Note 2) Internally Limited

Input Supply Voltage  $7.5\text{V}$

ESD Rating (Note 3)  $2\text{ kV}$

**Electrical Characteristics**

Limits in standard typeface are for  $T_J = 25^{\circ}\text{C}$ , and limits in **boldface type** apply over the full operating temperature range. Unless otherwise specified:  $V_{IN} = 5\text{V}$ ,  $I_L = 1\text{A}$ ,  $C_{OUT} = 33\text{ }\mu\text{F}$ .

Symbol	Parameter	Conditions	Typical	LM3940 (Note 4)		Units
				min	max	
$V_O$	Output Voltage	$5\text{ mA} \leq I_L \leq 1\text{A}$	3.3	3.20 <b>3.13</b>	3.40 <b>3.47</b>	V
$\frac{\Delta V_O}{\Delta V_I}$	Line Regulation	$I_L = 5\text{ mA}$ $4.5\text{V} \leq V_O \leq 5.5\text{V}$	20		40	mV
$\frac{\Delta V_O}{I_L}$	Load Regulation	$50\text{ mA} \leq I_L \leq 1\text{A}$	35		50 <b>80</b>	
$Z_O$	Output Impedance	$I_L$ (DC) = $100\text{ mA}$ $I_L$ (AC) = $20\text{ mA}$ (rms) $f = 120\text{ Hz}$	35			$\text{m}\Omega$
$I_Q$	Quiescent Current	$4.5\text{V} \leq V_{IN} \leq 5.5\text{V}$ $I_L = 5\text{ mA}$	10		15 <b>20</b>	mA
		$V_{IN} = 5\text{V}$ $I_L = 1\text{A}$	110		200 <b>250</b>	
$e_n$	Output Noise Voltage	$\text{BW} = 10\text{ Hz} - 100\text{ kHz}$ $I_L = 5\text{ mA}$	150			$\mu\text{V}$ (rms)
$V_O - V_{IN}$	Dropout Voltage (Note 5)	$I_L = 1\text{A}$	0.5		0.8 <b>1.0</b>	V
		$I_L = 100\text{ mA}$	110		150 <b>200</b>	mV
$I_{L(SC)}$	Short Circuit Current	$R_L = 0$	1.7	1.2		A

**Note 1:** Absolute maximum ratings indicate limits beyond which damage to the component may occur. Electrical specifications do not apply when operating the device outside of its rated operating conditions.

**Note 2:** The maximum allowable power dissipation is a function of the maximum junction temperature,  $T_J$ , the junction-to-ambient thermal resistance,  $\theta_{JA}$ , and the ambient temperature,  $T_A$ . Exceeding the maximum allowable power dissipation will cause excessive die temperature, and the regulator will go into thermal shutdown. The value of  $\theta_{JA}$  (for devices in still air with no heatsink) is  $60^{\circ}\text{C/W}$  for the TO-220 package,  $80^{\circ}\text{C/W}$  for the TO-263 package, and  $174^{\circ}\text{C/W}$  for the SOT-223 package. The effective value of  $\theta_{JA}$  can be reduced by using a heatsink (see Application Hints for specific information on heatsinking).

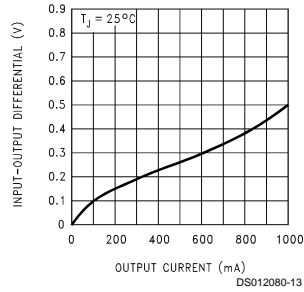
**Note 3:** ESD rating is based on the human body model:  $100\text{ pF}$  discharged through  $1.5\text{ k}\Omega$ .

**Note 4:** All limits guaranteed for  $T_J = 25^{\circ}\text{C}$  are 100% tested and are used to calculate Outgoing Quality Levels. All limits at temperature extremes are guaranteed via correlation using standard Statistical Quality Control (SQC) methods.

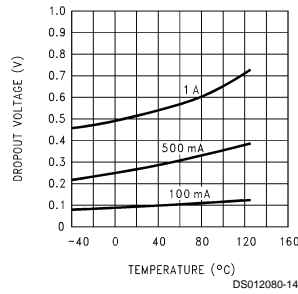
**Note 5:** Dropout voltage is defined as the input-output differential voltage where the regulator output drops to a value that is  $100\text{ mV}$  below the value that is measured at  $V_{IN} = 5\text{V}$ .

## Typical Performance Characteristics

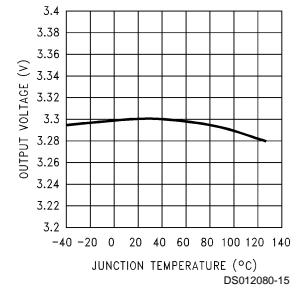
**Dropout Voltage**



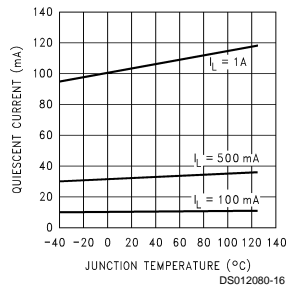
**Dropout Voltage vs Temperature**



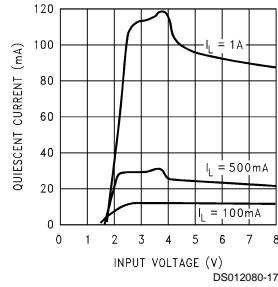
**Output Voltage vs Temperature**



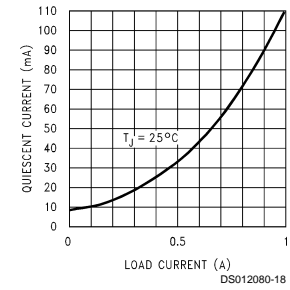
**Quiescent Current vs Temperature**



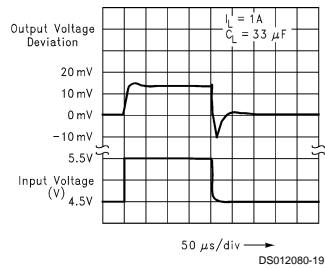
**Quiescent Current vs  $V_{IN}$**



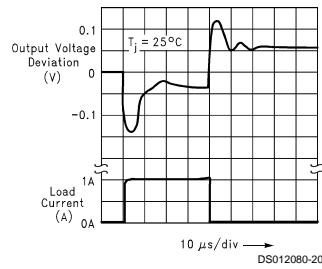
**Quiescent Current vs Load**



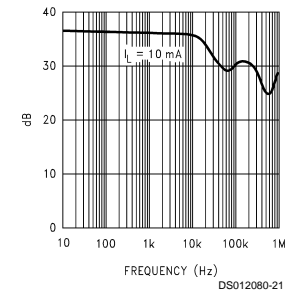
**Line Transient Response**



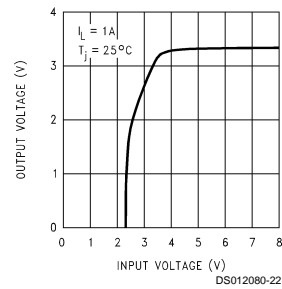
**Load Transient Response**



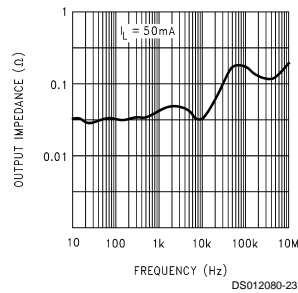
**Ripple Rejection**



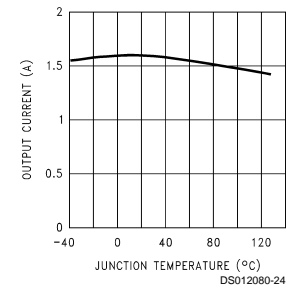
**Low Voltage Behavior**



**Output Impedance**



**Peak Output Current**



## Application Hints

### EXTERNAL CAPACITORS

The output capacitor is critical to maintaining regulator stability, and must meet the required conditions for both ESR (Equivalent Series Resistance) and minimum amount of capacitance.

#### MINIMUM CAPACITANCE:

The minimum output capacitance required to maintain stability is 33  $\mu\text{F}$  (this value may be increased without limit). Larger values of output capacitance will give improved transient response.

#### ESR LIMITS:

The ESR of the output capacitor will cause loop instability if it is too high or too low. The acceptable range of ESR plotted versus load current is shown in the graph below. **It is essential that the output capacitor meet these requirements, or oscillations can result.**

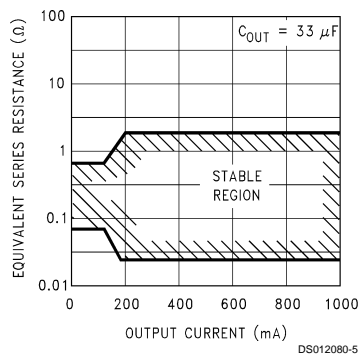


FIGURE 1. ESR Limits

It is important to note that for most capacitors, ESR is specified only at room temperature. However, the designer must ensure that the ESR will stay inside the limits shown over the entire operating temperature range for the design.

For aluminum electrolytic capacitors, ESR will increase by about 30X as the temperature is reduced from 25°C to -40°C. This type of capacitor is not well-suited for low temperature operation.

Solid tantalum capacitors have a more stable ESR over temperature, but are more expensive than aluminum electrolytics. A cost-effective approach sometimes used is to parallel an aluminum electrolytic with a solid Tantalum, with the total capacitance split about 75/25% with the Aluminum being the larger value.

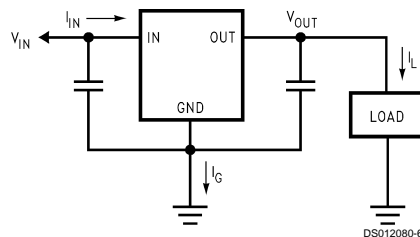
If two capacitors are paralleled, the effective ESR is the parallel of the two individual values. The "flatter" ESR of the Tantalum will keep the effective ESR from rising as quickly at low temperatures.

### HEATSINKING

A heatsink may be required depending on the maximum power dissipation and maximum ambient temperature of the application. Under all possible operating conditions, the junction temperature must be within the range specified under Absolute Maximum Ratings.

To determine if a heatsink is required, the power dissipated by the regulator,  $P_D$ , must be calculated.

The figure below shows the voltages and currents which are present in the circuit, as well as the formula for calculating the power dissipated in the regulator:



$$I_{IN} = I_L + I_G$$

$$P_D = (V_{IN} - V_{OUT}) I_L + (V_{IN}) I_G$$

FIGURE 2. Power Dissipation Diagram

The next parameter which must be calculated is the maximum allowable temperature rise,  $T_R$  (max). This is calculated by using the formula:

$$T_R \text{ (max)} = T_J \text{ (max)} - T_A \text{ (max)}$$

Where:  $T_J$  (max) is the maximum allowable junction temperature, which is 125°C for commercial grade parts.

$T_A$  (max) is the maximum ambient temperature which will be encountered in the application.

Using the calculated values for  $T_R$ (max) and  $P_D$ , the maximum allowable value for the junction-to-ambient thermal resistance,  $\theta_{(J-A)}$ , can now be found:

$$\theta_{(J-A)} = T_R \text{ (max)} / P_D$$

**IMPORTANT:** If the maximum allowable value for  $\theta_{(J-A)}$  is found to be  $\geq 60^\circ\text{C/W}$  for the TO-220 package,  $\geq 80^\circ\text{C/W}$  for the TO-263 package, or  $\geq 174^\circ\text{C/W}$  for the SOT-223 package, no heatsink is needed since the package alone will dissipate enough heat to satisfy these requirements.

If the calculated value for  $\theta_{(J-A)}$  falls below these limits, a heatsink is required.

### HEATSINKING TO-220 PACKAGE PARTS

The TO-220 can be attached to a typical heatsink, or secured to a copper plane on a PC board. If a copper plane is to be used, the values of  $\theta_{(J-A)}$  will be the same as shown in the next section for the TO-263.

### Application Hints (Continued)

If a manufactured heatsink is to be selected, the value of heatsink-to-ambient thermal resistance,  $\theta_{(H-A)}$ , must first be calculated:

$$\theta_{(H-A)} = \theta_{(J-A)} - \theta_{(C-H)} - \theta_{(J-C)}$$

Where:  $\theta_{(J-C)}$  is defined as the thermal resistance from the junction to the surface of the case. A value of 4°C/W can be assumed for  $\theta_{(J-C)}$  for this calculation.

$\theta_{(C-H)}$  is defined as the thermal resistance between the case and the surface of the heat-sink. The value of  $\theta_{(C-H)}$  will vary from about 1.5°C/W to about 2.5°C/W (depending on method of attachment, insulator, etc.). If the exact value is unknown, 2°C/W should be assumed for  $\theta_{(C-H)}$ .

When a value for  $\theta_{(H-A)}$  is found using the equation shown, a heatsink must be selected that has a value that is less than or equal to this number.

$\theta_{(H-A)}$  is specified numerically by the heatsink manufacturer in the catalog, or shown in a curve that plots temperature rise vs power dissipation for the heatsink.

### HEATSINKING TO-263 AND SOT-223 PACKAGE PARTS

Both the TO-263 ("S") and SOT-223 ("MP") packages use a copper plane on the PCB and the PCB itself as a heatsink. To optimize the heat sinking ability of the plane and PCB, solder the tab of the package to the plane.

Figure 3 shows for the TO-263 the measured values of  $\theta_{(J-A)}$  for different copper area sizes using a typical PCB with 1 ounce copper and no solder mask over the copper area used for heatsinking.

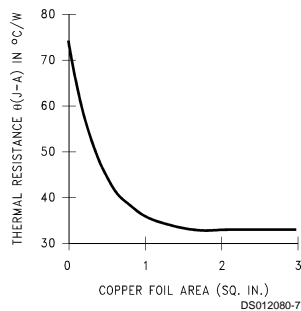


FIGURE 3.  $\theta_{(J-A)}$  vs Copper (1 ounce) Area for the TO-263 Package

As shown in the figure, increasing the copper area beyond 1 square inch produces very little improvement. It should also be observed that the minimum value of  $\theta_{(J-A)}$  for the TO-263 package mounted to a PCB is 32°C/W.

As a design aid, Figure 4 shows the maximum allowable power dissipation compared to ambient temperature for the TO-263 device (assuming  $\theta_{(J-A)}$  is 35°C/W and the maximum junction temperature is 125°C).

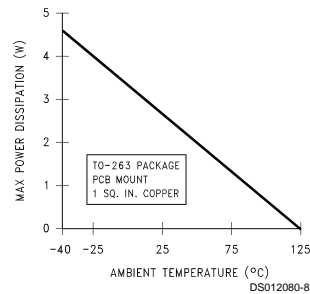


FIGURE 4. Maximum Power Dissipation vs  $T_{AMB}$  for the TO-263 Package

Figure 5 and Figure 6 show the information for the SOT-223 package. Figure 6 assumes a  $\theta_{(J-A)}$  of 74°C/W for 1 ounce copper and 51°C/W for 2 ounce copper and a maximum junction temperature of 125°C.

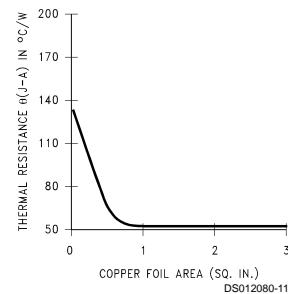


FIGURE 5.  $\theta_{(J-A)}$  vs Copper (2 ounce) Area for the SOT-223 Package

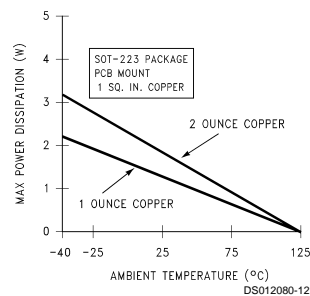
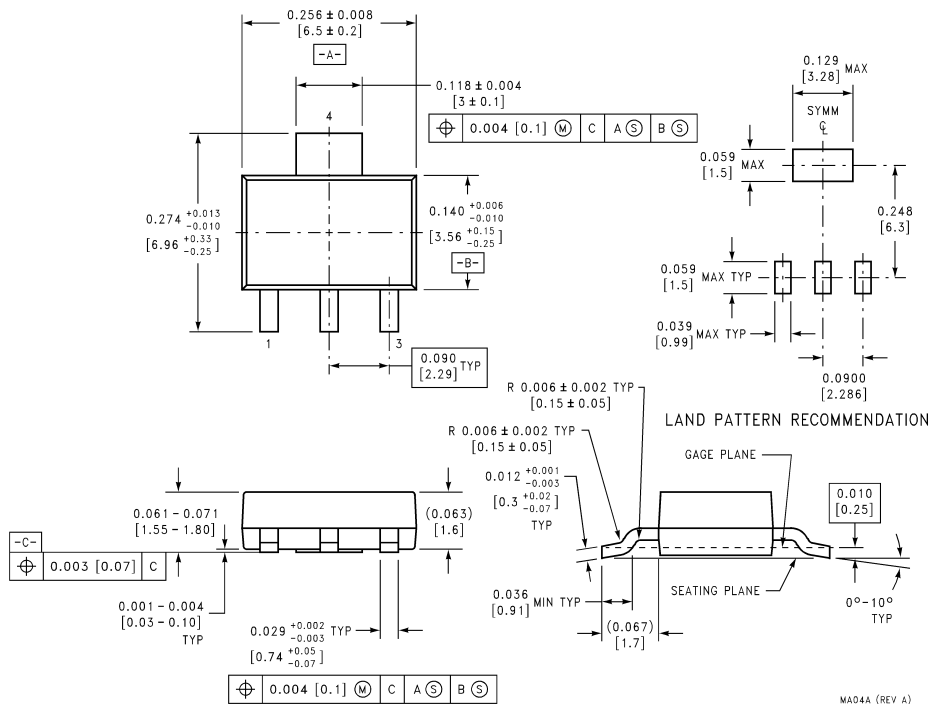


FIGURE 6. Maximum Power Dissipation vs  $T_{AMB}$  for the SOT-223 Package

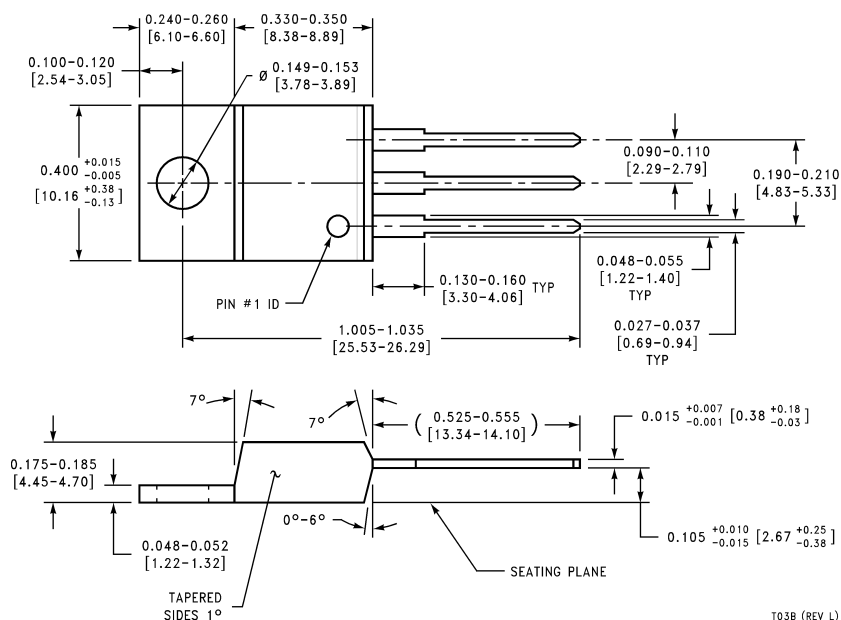
Please see AN1028 for power enhancement techniques to be used with the SOT-223 package.

**Physical Dimensions** inches (millimeters) unless otherwise noted



**3-Lead SOT-223 Package**  
**Order Part Number LM3940IMP-3.3**  
**NSC Package Number MA04A**

# Physical Dimensions inches (millimeters) unless otherwise noted (Continued)

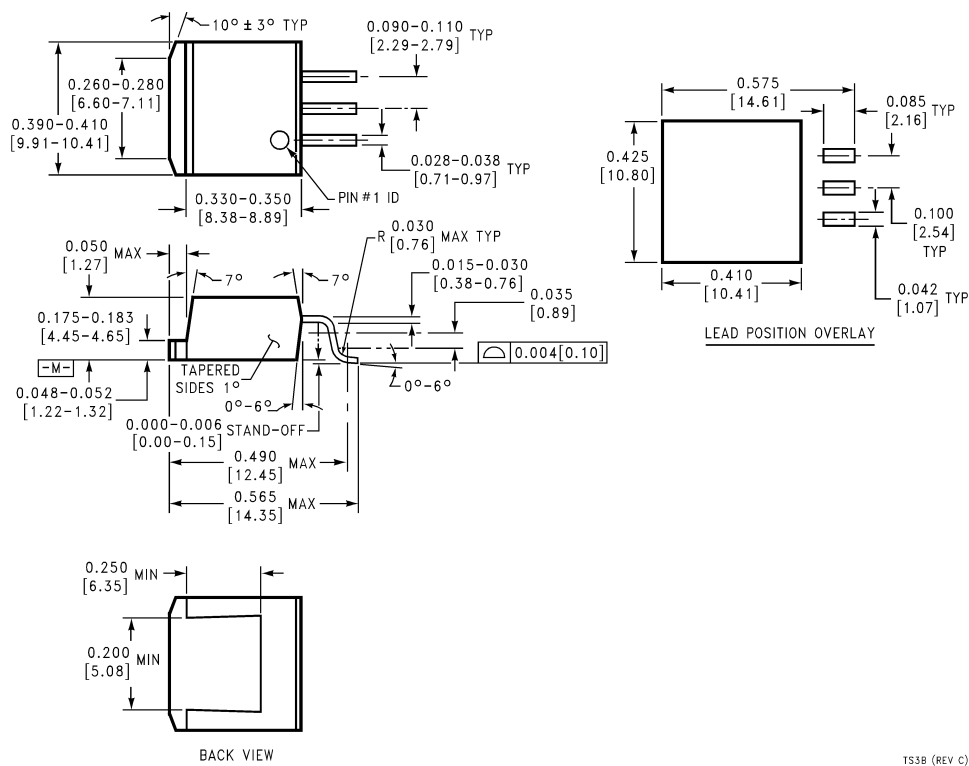


**3-Lead TO-220 Package**  
**Order Part Number LM3940IT-3.3**  
**NSC Package Number TO3B**

TO3B (REV L)



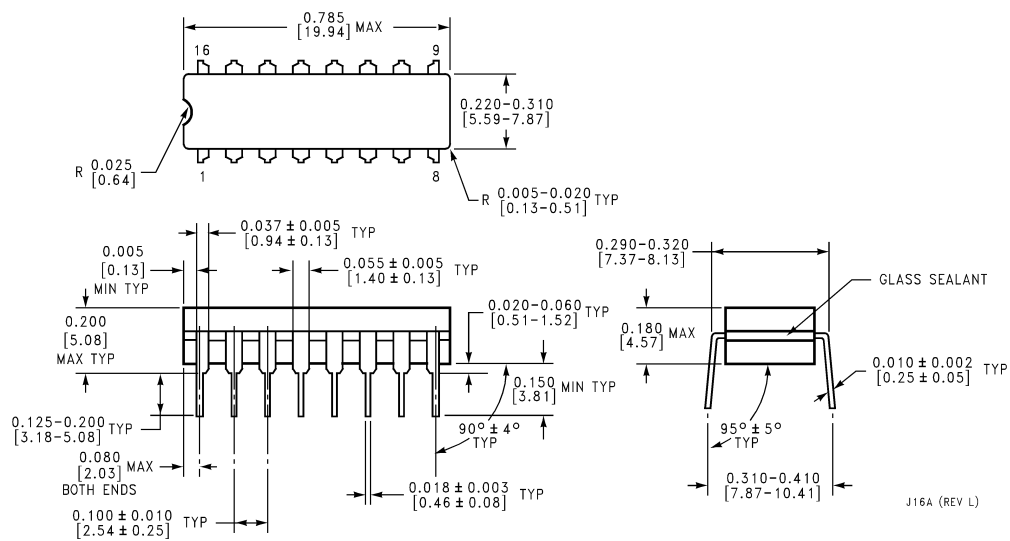
**Physical Dimensions** inches (millimeters) unless otherwise noted (Continued)



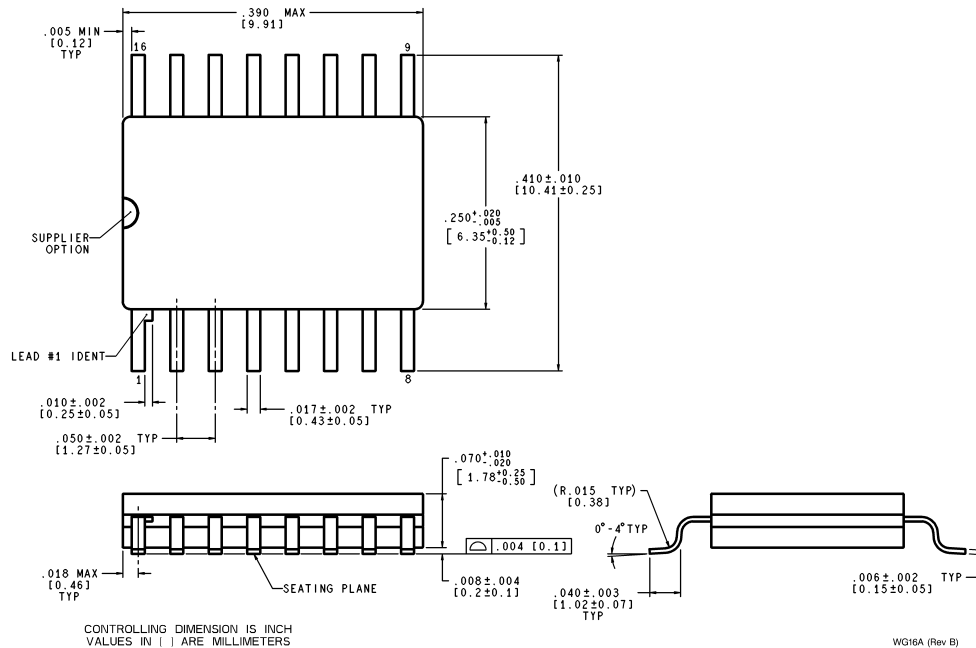
**3-Lead TO-263 Package**  
**Order Part Number LM3940IS-3.3**  
**NSC Package Number TS3B**

TS3B (REV C)

**Physical Dimensions** inches (millimeters) unless otherwise noted (Continued)



**16-Lead Ceramic Dual-in-Line Package**  
**Order Part Number LM3940J-3.3-QML**  
**5962-9688401QEA**  
**NSC Drawing Number J16A**

**Physical Dimensions** inches (millimeters) unless otherwise noted (Continued)

**16-Lead Ceramic Surface-Mount Package**  
**Order Part Number LM3940WG-3.3-QML**  
**5962-9688401QXA**  
**NSC Package Number WG16A**

## LIFE SUPPORT POLICY

NATIONAL'S PRODUCTS ARE NOT AUTHORIZED FOR USE AS CRITICAL COMPONENTS IN LIFE SUPPORT DEVICES OR SYSTEMS WITHOUT THE EXPRESS WRITTEN APPROVAL OF THE PRESIDENT AND GENERAL COUNSEL OF NATIONAL SEMICONDUCTOR CORPORATION. As used herein:

1. Life support devices or systems are devices or systems which, (a) are intended for surgical implant into the body, or (b) support or sustain life, and whose failure to perform when properly used in accordance with instructions for use provided in the labeling, can be reasonably expected to result in a significant injury to the user.
2. A critical component is any component of a life support device or system whose failure to perform can be reasonably expected to cause the failure of the life support device or system, or to affect its safety or effectiveness.



**National Semiconductor Corporation**  
Americas  
Tel: 1-800-272-9959  
Fax: 1-800-737-7018  
Email: [support@nsc.com](mailto:support@nsc.com)

www.national.com

**National Semiconductor  
Europe**

Fax: +49 (0) 1 80-530 85 86  
Email: [europe.support@nsc.com](mailto:europe.support@nsc.com)  
Deutsch Tel: +49 (0) 1 80-530 85 85  
English Tel: +49 (0) 1 80-532 78 32  
Français Tel: +49 (0) 1 80-532 93 58  
Italiano Tel: +49 (0) 1 80-534 16 80

**National Semiconductor  
Asia Pacific Customer**

**Asia Pacific Customer  
Response Group**  
Tel: 65-2544466  
Fax: 65-2504466  
Email: [sea.support@nsc.com](mailto:sea.support@nsc.com)

**National Semiconductor  
Japan Ltd.**

Tel: 81-3-5639-7560  
Fax: 81-3-5639-7507