

LM109QML

5-Volt Regulator

General Description

The LM109 series are complete 5V regulators fabricated on a single silicon chip. They are designed for local regulation on digital logic cards, eliminating the distribution problems associated with single-point regulation. The devices are available in two standard transistor packages. In the solid-kovar TO-5 header, it can deliver output currents in excess of 200 mA, if adequate heat sinking is provided. With the TO-3 power package, the available output current is greater than 1A.

The regulators are essentially blowout proof. Current limiting is included to limit the peak output current to a safe value. In addition, thermal shutdown is provided to keep the IC from overheating. If internal dissipation becomes too great, the regulator will shut down to prevent excessive heating.

Considerable effort was expended to make these devices easy to use and to minimize the number of external components. It is not necessary to bypass the output, although this

does improve transient response somewhat. Input bypassing is needed, however, if the regulator is located very far from the filter capacitor of the power supply. Stability is also achieved by methods that provide very good rejection of load or line transients as are usually seen with TTL logic.

Although designed primarily as a fixed-voltage regulator, the output of the LM109 series can be set to voltages above 5V, as shown. It is also possible to use the circuits as the control element in precision regulators, taking advantage of the good current-handling capability and the thermal overload protection.

Features

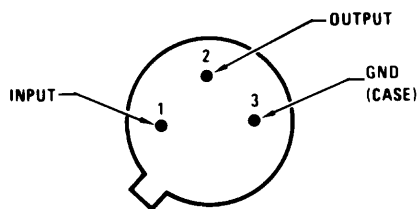
- Specified to be compatible, worst case, with TTL and DTL
- Output current in excess of 1A
- Internal thermal overload protection
- No external components required

Ordering Information

NS Part Number	SMD Part Number	NS Package Number	Package Description
LM109H/883		H03A	3LD TO-39 Metal Can
LM109K/883		K02C	2LD TO-3 Metal Can

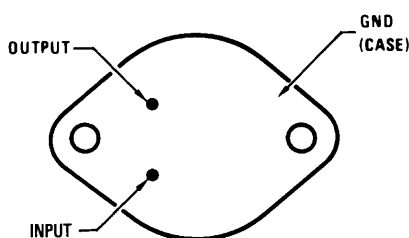
Connection Diagrams

Metal Can Packages



See NS Package Number H03A
Bottom View

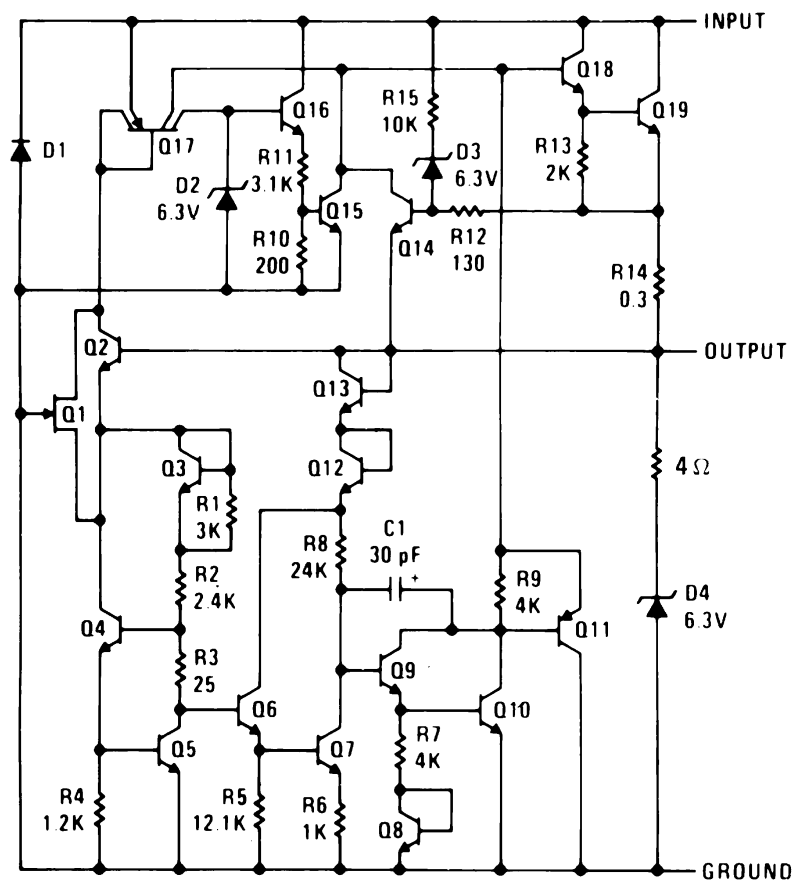
20149933



See NS Package Number K02C
Bottom View

20149934

Schematic Diagram



20149901

Absolute Maximum Ratings (Note 1)

Input Voltage	35V
Power Dissipation	Internally Limited
Operating Ambient Temperature Range	$-55^{\circ}\text{C} \leq T_A \leq +150^{\circ}\text{C}$
Storage Temperature Range	$-65^{\circ}\text{C} \leq T_A \leq +150^{\circ}\text{C}$
Maximum Junction Temperature	150°C
Thermal Resistance	
θ_{JA}	
H-Pkg (Still Air)	190°C/W
H-Pkg (500LF/Min Air flow)	69°C/W
K-Pkg (Still Air)	39°C/W
K-Pkg (500LF/Min Air flow)	TBD
θ_{JC}	
H-Pkg	25°C/W
K-Pkg	3°C/W
Lead Temperature (Soldering, 10 sec.)	300°C
ESD Tolerance (Note 6)	4000V

Quality Conformance Inspection

Mil-Std-883, Method 5005 - Group A

Subgroup	Description	Temp °C
1	Static tests at	25
2	Static tests at	125
3	Static tests at	-55
4	Dynamic tests at	25
5	Dynamic tests at	125
6	Dynamic tests at	-55
7	Functional tests at	25
8A	Functional tests at	125
8B	Functional tests at	-55
9	Switching tests at	25
10	Switching tests at	125
11	Switching tests at	-55
12	Settling time at	25
13	Settling time at	125
14	Settling time at	-55

LM109H Electrical Characteristics

DC/AC Parameters

The following conditions apply to all the following parameters, unless otherwise specified.

AC / DC: $I_L = 5\text{mA}$

Symbol	Parameter	Conditions	Notes	Min	Max	Unit	Sub-groups
V_{Start}	Start Up Input Voltage	$V_O \geq 4.706\text{V}$, $R_L = 25\Omega$	(Note 2)		9.0	V	1
I_Q	Quiescent Current	$V_I = 7\text{V}$		-10		mA	1, 2, 3
		$V_I = 7.2\text{V}$, $I_L = 500\text{mA}$	(Note 4)	-10		mA	1, 2, 3
		$V_I = 25\text{V}$		-10		mA	1, 2, 3
		$V_I = 25\text{V}$, $I_L = 500\text{mA}$	(Note 4)	-10		mA	1, 2, 3
		$V_I = 35\text{V}$		-10		mA	1
ΔI_Q	Quiescent Current Change	$7\text{V} \leq V_I \leq 25\text{V}$		-0.5	0.5	mA	1, 2, 3
		$V_I = 7.2\text{V}$, $5\text{mA} \leq I_L \leq 500\text{mA}$	(Note 4)	-0.8	0.8	mA	1, 2, 3
V_{RLine}	Line Regulation	$7\text{V} \leq V_I \leq 25\text{V}$		-50	50	mV	1
				-100	100	mV	2, 3
V_{RLoad}	Load Regulation	$V_I = 7.2\text{V}$, $5\text{mA} \leq I_L \leq 500\text{mA}$		-50	50	mV	1
			(Note 4)	-100	100	mV	2, 3
		$V_I = 10\text{V}$, $5\text{mA} \leq I_L \leq 500\text{mA}$		-50	50	mV	1
			(Note 4)	-100	100	mV	2, 3
		$V_I = 25\text{V}$, $20\text{mA} \leq I_L \leq 500\text{mA}$		-150	150	mV	1
		$V_I = 25\text{V}$, $t_{\text{PW}} \leq 10\text{ms}$, $500\text{mA} \geq I_L \geq 20\text{mA}$,	(Note 4)	-50	50	mV	1
V_O	Output Voltage	$V_I = 7\text{V}$, $P_1 \leq 2\text{W}$		4.6	5.4	V	1, 2, 3
		$V_I = 7.2\text{V}$, $I_L = 500\text{mA}$, $P \leq 2\text{W}$	(Note 4)	4.6	5.4	V	1, 2, 3
		$V_I = 10\text{V}$, $I_L = 100\text{mA}$, $P \leq 2\text{W}$		4.7	5.3	V	1
		$V_I = 25\text{V}$, $I_L = 20\text{mA}$, $P \leq 2\text{W}$		4.6	5.4	V	1
		$V_I = 25\text{V}$, $I_L = 500\text{mA}$, $P \leq 2\text{W}$, $t_{\text{PW}} \leq 10\text{mS}$	(Note 4)	4.6	5.4	V	1, 2, 3
		$V_I = 25\text{V}$, $P \leq 2\text{W}$		4.6	5.4	V	1, 2, 3
I_{OS}	Short Circuit Current	$V_I = 35\text{V}$			2.0	A	1
RR	Ripple Rejection f	$f \leq 120\text{Hz}$, $e_1 = 1V_{\text{RMS}}$, $I_L = 125\text{mA}$		50		dB	4

LM109K Electrical Characteristics

DC/AC Parameters

The following conditions apply to all the following parameters, unless otherwise specified. AC / DC: $I_L = 5\text{mA}$ (Note 6)

Symbol	Parameter	Conditions	Notes	Min	Max	Unit	Sub-groups
V_{Start}	Start Up Input Voltage	$V_O \geq 4.706\text{V}$, $R_L = 5\Omega$	(Note 2)		9.0	V	1
I_Q	Quiescent Current	$V_I = 7\text{V}$		-10		mA	1, 2, 3
		$V_I = 7.2\text{V}$, $I_L = 1.5\text{A}$	(Note 3)	-10		mA	1, 2, 3
		$V_I = 25\text{V}$		-10		mA	1, 2, 3
		$V_I = 25\text{V}$, $I_L = 1.5\text{A}$ $t_{\text{PW}} \leq 10\text{ms}$	(Note 3)	-10		mA	1, 2, 3
		$V_I = 35\text{V}$		-10		mA	1
ΔI_Q	Quiescent Current Change	$7\text{V} \leq V_I \leq 25\text{V}$		-0.5	0.5	mA	1, 2, 3
		$V_I = 7.2\text{V}$, $5\text{mA} \leq I_L \leq 1.5\text{A}$	(Note 3)	-0.8	0.8	mA	1, 2, 3
V_{RLine}	Line Regulation	$7\text{V} \leq V_I \leq 25\text{V}$		-50	50	mV	1
				-100	100	mV	2, 3
V_{RLoad}	Load Regulation	$V_I = 7.2\text{V}$, $5\text{mA} \leq I_L \leq 1.5\text{A}$		-100	100	mV	1
			(Note 3)	-200	200	mV	2, 3
		$V_I = 10\text{V}$, $1.5\text{A} \geq I_L \geq 5\text{mA}$		-100	100	mV	1
			(Note 3)	-200	200	mV	2, 3
		$V_I = 25\text{V}$, $t_{\text{PW}} < 10\text{ms}$, $1\text{A} \geq I_L \geq 20\text{mA}$,		-50	50	mV	1
V_O	Output Voltage	$V_I = 7\text{V}$, $P_1 \leq 20\text{W}$		4.6	5.4	V	1, 2, 3
		$V_I = 7.2\text{V}$, $I_L = 1.5\text{A}$, $P \leq 20\text{W}$	(Note 3)	4.6	5.4	V	1, 2, 3
		$V_I = 10\text{V}$, $I_L = 500\text{mA}$, $P \leq 20\text{W}$		4.7	5.3	V	1
		$V_I = 25\text{V}$, $I_L = 20\text{mA}$, $P \leq 20\text{W}$		4.6	5.4	V	1
		$V_I = 25\text{V}$, $I_L = 1\text{A}$, $P \leq 20\text{W}$, $t_{\text{PW}} \leq 10\text{ms}$		4.6	5.4	V	1, 2, 3
		$V_I = 25\text{V}$, $P \leq 20\text{W}$		4.6	5.4	V	1, 2, 3
I_{OS}	Short Circuit Current	$V_I = 35\text{V}$			2.8	A	1
RR	Ripple Rejection	$f \leq 120\text{Hz}$, $e_1 = 1\text{V}_{\text{RMS}}$, $I_L = 500\text{mA}$		50		dB	4

DC Parameters

The following conditions apply to all the following parameters, unless otherwise specified. DC: $I_L = 5\text{mA}$ (Note 6)

Symbol	Parameter	Conditions	Notes	Min	Max	Unit	Sub-groups
V_N	Output Noise Voltage	$10\text{Hz} \leq f \leq 100\text{KHz}$	(Note 5)		200	μV	7
$\Delta V_O / \Delta T$	Long Term Stability		(Note 5)		10	mV	8

Note 1: Absolute Maximum Ratings indicate limits beyond which damage to the device may occur. Operating Ratings indicate conditions for which the device is functional, but do not guarantee specific performance limits. For guaranteed specifications and test conditions, see the Electrical Characteristics. The guaranteed specifications apply only for the test conditions listed. Some performance characteristics may degrade when the device is not operated under the listed test conditions.

Note 2: This test is performed by shifting the input voltage in 50mV increments until output reaches 4.706V.

Note 3: At -55°C & 125°C , $I_L = 1\text{A}$ rather than 1.5A.

Note 4: At -55°C & 125°C , $I_L = 200\text{mA}$ rather than 500mA.

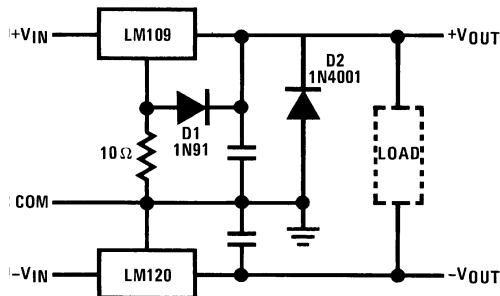
Note 5: Guaranteed parameter, not tested.

Note 6: Human body model, 1.5k Ω in series with 100pF.

Application Hints

1. **Bypass the input** of the LM109 to ground with $\geq 0.2 \mu\text{F}$ ceramic or solid tantalum capacitor if main filter capacitor is more than 4 inches away.
2. **Avoid insertion of regulator into "live" socket** if input voltage is greater than 10V. The output will rise to within 2V of the unregulated input if the ground pin does not make contact, possibly damaging the load. The LM109 may also be damaged if a large output capacitor is charged up, then discharged through the internal clamp zener when the ground pin makes contact.
3. **The output clamp zener** is designed to absorb transients only. It will not clamp the output effectively if a failure occurs in the internal power transistor structure. Zener dynamic impedance is $\approx 4\Omega$. Continuous RMS current into the zener should not exceed 0.5A.
4. **Paralleling of LM109s** for higher output current is not recommended. Current sharing will be almost nonexistent, leading to a current limit mode operation for devices with the highest initial output voltage. The current limit devices may also heat up to the thermal shutdown point ($\approx 175^\circ\text{C}$). Long term reliability cannot be guaranteed under these conditions.
5. **Preventing latchoff** for loads connected to negative voltage:

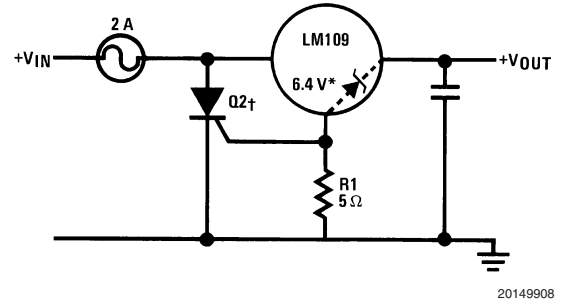
If the output of the LM109 is pulled negative by a high current supply so that the output pin is more than 0.5V negative with respect to the ground pin, the LM109 can latch off. This can be prevented by clamping the ground pin to the output pin with a germanium or Schottky diode as shown. A silicon diode (1N4001) at the output is also needed to keep the positive output from being pulled too far negative. The 10Ω resistor will raise $+V_{\text{OUT}}$ by $\approx 0.05\text{V}$.



20149907

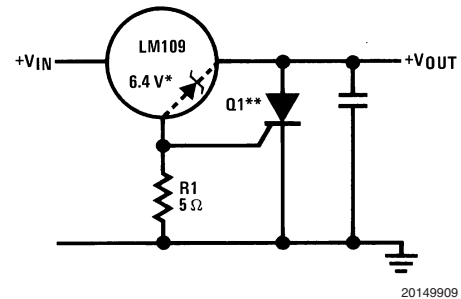
Crowbar Overvoltage Protection

Input Crowbar



20149908

Output Crowbar



20149909

*Zener is internal to LM109.

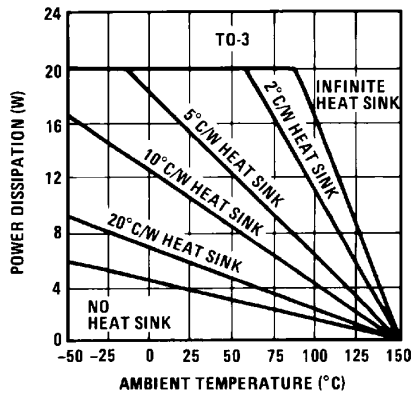
**Q1 must be able to withstand 7A continuous current if fusing is not used at regulator input. LM109 bond wires will fuse at currents above 7A.

†Q2 is selected for surge capability. Consideration must be given to filter capacitor size, transformer impedance, and fuse blowing time.

††Trip point is $\approx 7.5\text{V}$.

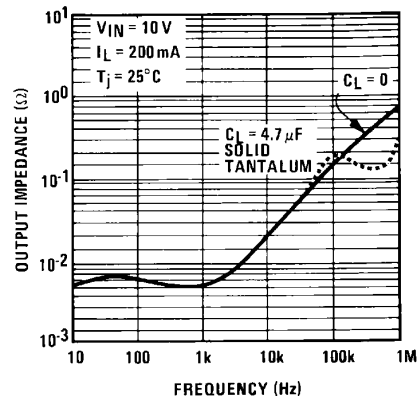
Typical Performance Characteristics

Maximum Average
Power Dissipation (LM109K)



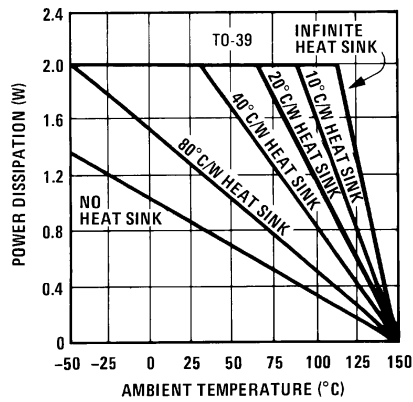
20149916

Output Impedance



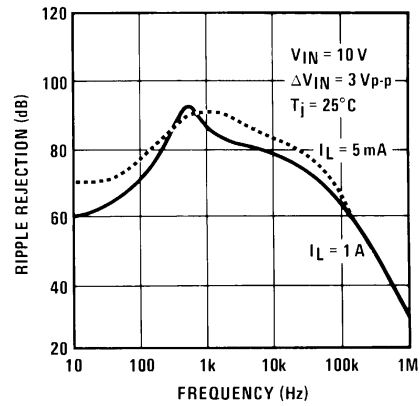
20149918

Maximum Average
Power Dissipation (LM109H)



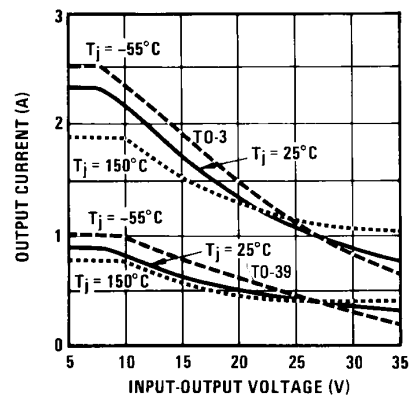
20149919

Ripple Rejection



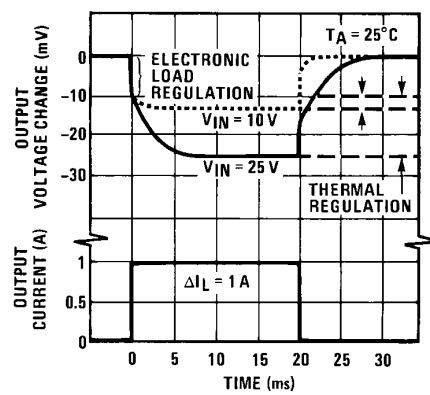
20149921

Current Limit
Characteristics (Note 7)



20149922

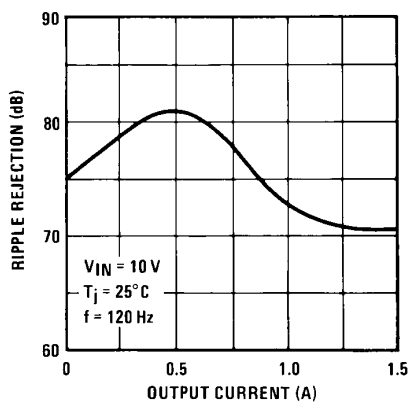
Thermally Induced Output
Voltage Variation



20149923

Typical Performance Characteristics (Continued)

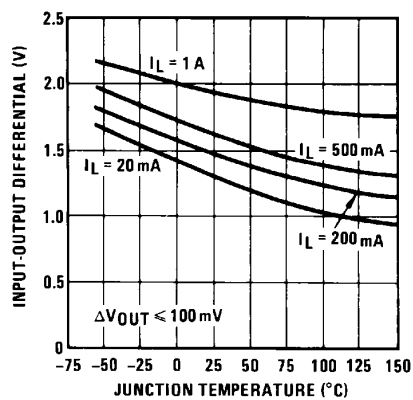
Ripple Rejection



20149924

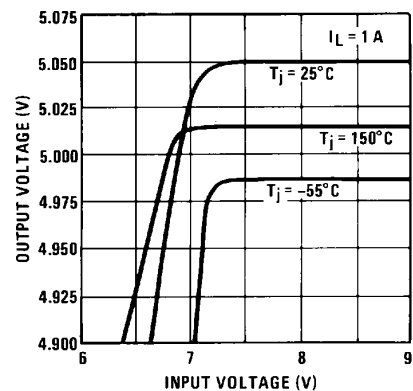
Note 7: Current limiting foldback characteristics are determined by input output differential, not by output voltage.

Input-Output Differential (V)



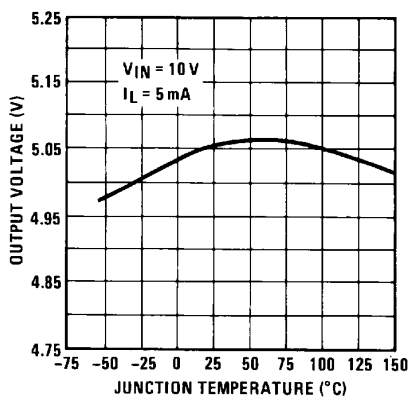
20149925

Output Voltage (V)



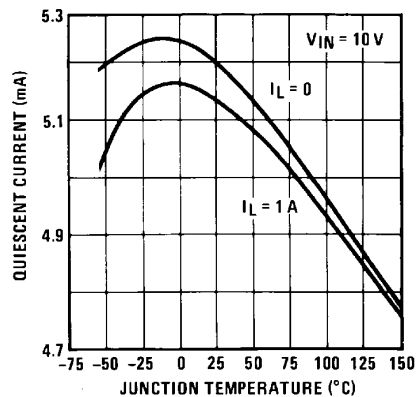
20149926

Output Voltage (V)



20149927

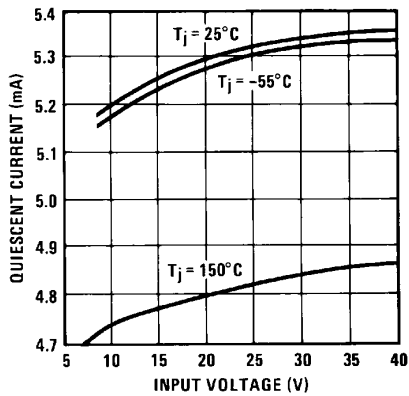
Quiescent Current



20149928

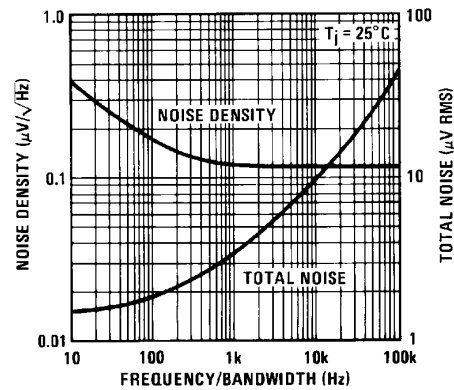
Typical Performance Characteristics (Continued)

Quiescent Current



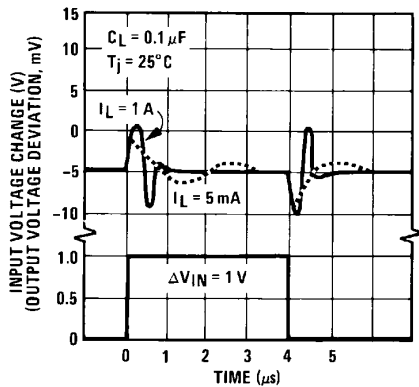
20149929

Output Voltage Noise



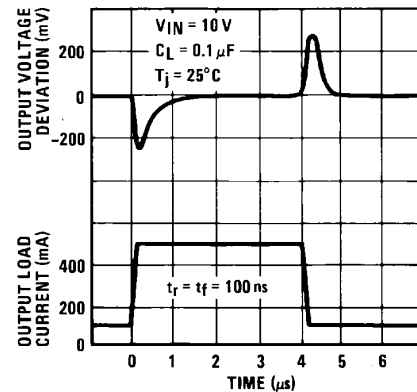
20149930

Line Transient Response



20149931

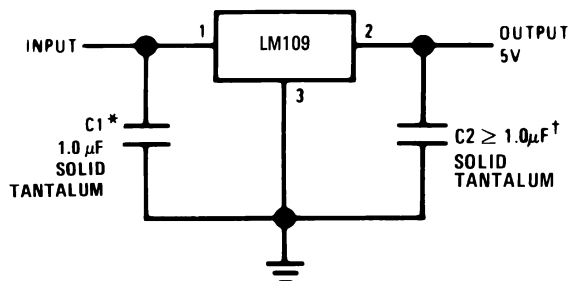
Load Transient Response



20149932

Typical Applications

Fixed 5V Regulator



20149902

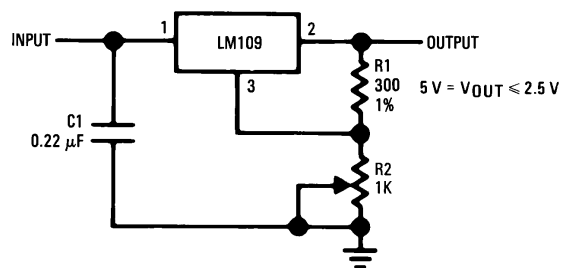
*Required if regulator is located more than 4" from power supply filter capacitor.

†Although no output capacitor is needed for stability, it does improve transient response.

$C2$ should be used whenever long wires are used to connect to the load, or when transient response is critical.

Note: Pin 3 electrically connected to case.

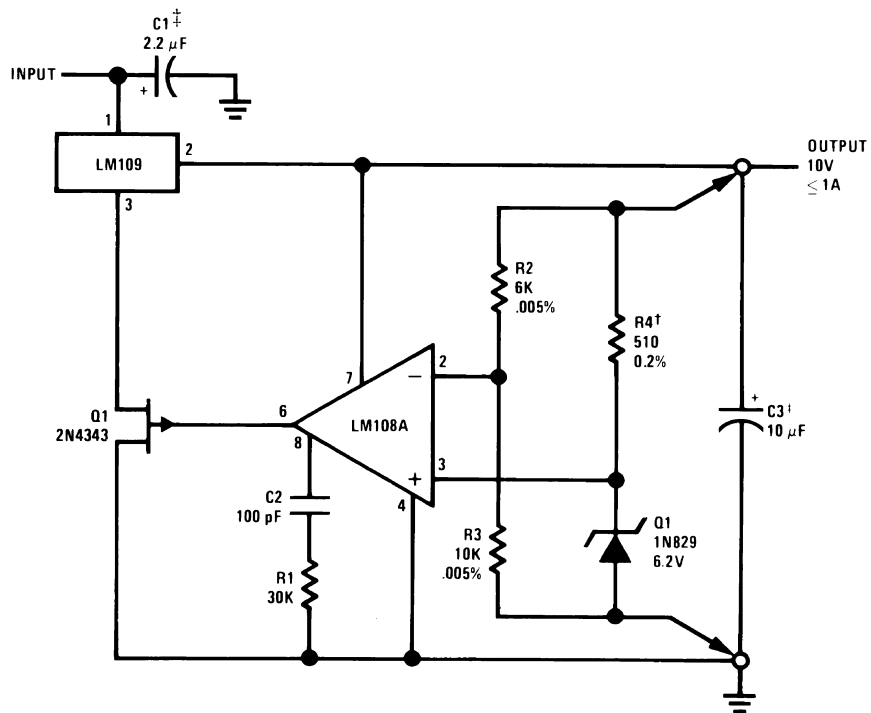
Adjustable Output Regulator



20149904

Typical Applications (Continued)

High Stability Regulator*



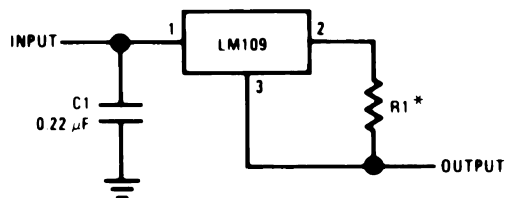
20149905

*Regulation better than 0.01%, load, line and temperature, can be obtained.

†Determines zener current. May be adjusted to minimize thermal drift.

‡Solid tantalum.

Current Regulator



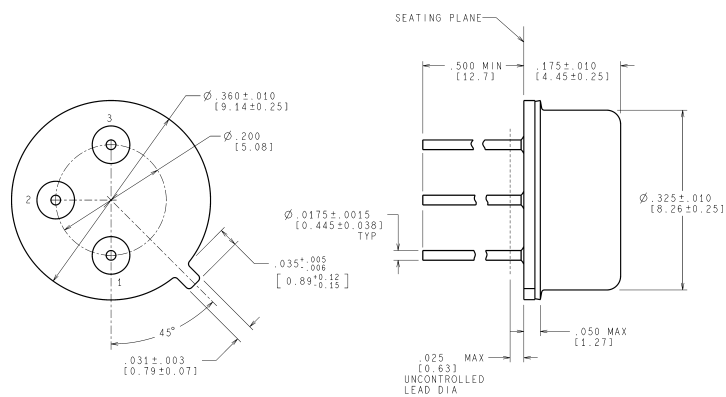
20149906

*Determines output current. If wirewound resistor is used, bypass with 0.1 μ F.

Revision History

Date Released	Revision	Section	Originator	Changes
11/08/05	A	New release to corporate format	L. Lytle	2 MDS datasheets converted into one datasheet in the corporate format. Deleted note 5 & corrected V_{RLoad} of LM109K to \geq . MNLM109-K Rev 0AL & MNLM109-H Rev 0AL will be archived.

Physical Dimensions inches (millimeters) unless otherwise noted

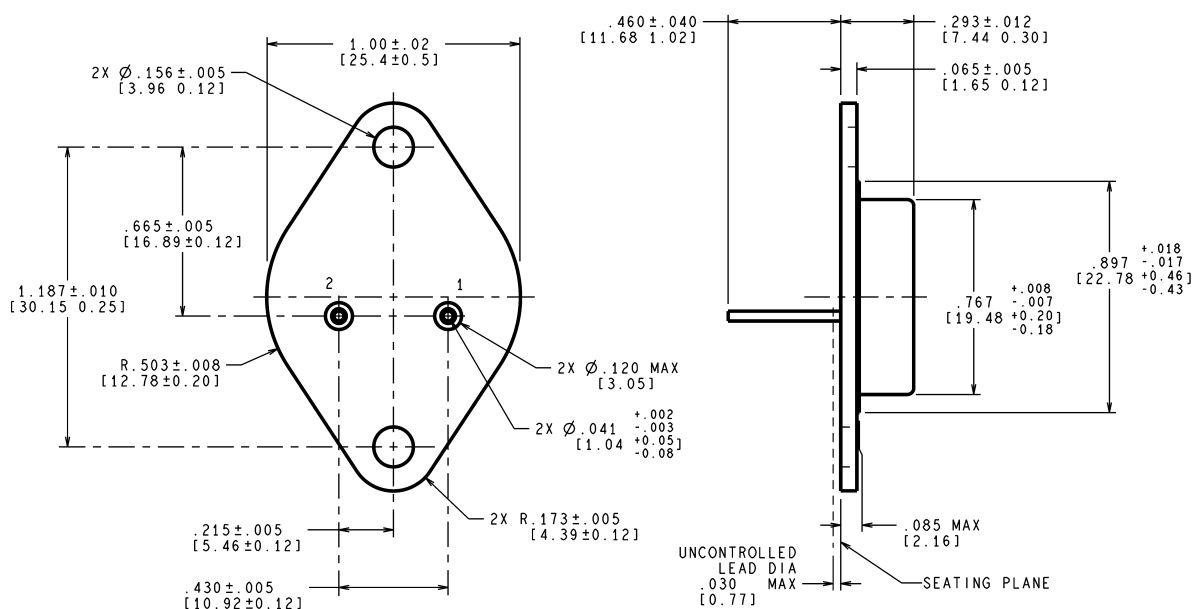


CONTROLLING DIMENSION IS INCH
VALUES IN [] ARE MILLIMETERS

MIL-PRF-38535
CONFIGURATION CONTROL

H03A (Rev D)

Metal Can Package (H) NS Package Number H03A



CONTROLLING DIMENSION IS INCH
VALUES IN [] ARE MILLIMETERS

MIL-PRF-38535
CONFIGURATION CONTROL

K02C (Rev E)

Metal Can Package (K) NS Package Number K02C

Notes

National does not assume any responsibility for use of any circuitry described, no circuit patent licenses are implied and National reserves the right at any time without notice to change said circuitry and specifications.

For the most current product information visit us at www.national.com.

LIFE SUPPORT POLICY

NATIONAL'S PRODUCTS ARE NOT AUTHORIZED FOR USE AS CRITICAL COMPONENTS IN LIFE SUPPORT DEVICES OR SYSTEMS WITHOUT THE EXPRESS WRITTEN APPROVAL OF THE PRESIDENT AND GENERAL COUNSEL OF NATIONAL SEMICONDUCTOR CORPORATION. As used herein:

1. Life support devices or systems are devices or systems which, (a) are intended for surgical implant into the body, or (b) support or sustain life, and whose failure to perform when properly used in accordance with instructions for use provided in the labeling, can be reasonably expected to result in a significant injury to the user.
2. A critical component is any component of a life support device or system whose failure to perform can be reasonably expected to cause the failure of the life support device or system, or to affect its safety or effectiveness.

BANNED SUBSTANCE COMPLIANCE

National Semiconductor manufactures products and uses packing materials that meet the provisions of the Customer Products Stewardship Specification (CSP-9-111C2) and the Banned Substances and Materials of Interest Specification (CSP-9-111S2) and contain no "Banned Substances" as defined in CSP-9-111S2.

Leadfree products are RoHS compliant.



National Semiconductor
Americas Customer
Support Center
Email: new.feedback@nsc.com
Tel: 1-800-272-9959

www.national.com

National Semiconductor
Europe Customer Support Center
Fax: +49 (0) 180-530 85 86
Email: europe.support@nsc.com
Deutsch Tel: +49 (0) 69 9508 6208
English Tel: +44 (0) 870 24 0 2171
Français Tel: +33 (0) 1 41 91 8790

National Semiconductor
Asia Pacific Customer
Support Center
Email: ap.support@nsc.com

National Semiconductor
Japan Customer Support Center
Fax: 81-3-5639-7507
Email: jpn.feedback@nsc.com
Tel: 81-3-5639-7560

IMPORTANT NOTICE

Texas Instruments Incorporated and its subsidiaries (TI) reserve the right to make corrections, modifications, enhancements, improvements, and other changes to its products and services at any time and to discontinue any product or service without notice. Customers should obtain the latest relevant information before placing orders and should verify that such information is current and complete. All products are sold subject to TI's terms and conditions of sale supplied at the time of order acknowledgment.

TI warrants performance of its hardware products to the specifications applicable at the time of sale in accordance with TI's standard warranty. Testing and other quality control techniques are used to the extent TI deems necessary to support this warranty. Except where mandated by government requirements, testing of all parameters of each product is not necessarily performed.

TI assumes no liability for applications assistance or customer product design. Customers are responsible for their products and applications using TI components. To minimize the risks associated with customer products and applications, customers should provide adequate design and operating safeguards.

TI does not warrant or represent that any license, either express or implied, is granted under any TI patent right, copyright, mask work right, or other TI intellectual property right relating to any combination, machine, or process in which TI products or services are used. Information published by TI regarding third-party products or services does not constitute a license from TI to use such products or services or a warranty or endorsement thereof. Use of such information may require a license from a third party under the patents or other intellectual property of the third party, or a license from TI under the patents or other intellectual property of TI.

Reproduction of TI information in TI data books or data sheets is permissible only if reproduction is without alteration and is accompanied by all associated warranties, conditions, limitations, and notices. Reproduction of this information with alteration is an unfair and deceptive business practice. TI is not responsible or liable for such altered documentation. Information of third parties may be subject to additional restrictions.

Resale of TI products or services with statements different from or beyond the parameters stated by TI for that product or service voids all express and any implied warranties for the associated TI product or service and is an unfair and deceptive business practice. TI is not responsible or liable for any such statements.

TI products are not authorized for use in safety-critical applications (such as life support) where a failure of the TI product would reasonably be expected to cause severe personal injury or death, unless officers of the parties have executed an agreement specifically governing such use. Buyers represent that they have all necessary expertise in the safety and regulatory ramifications of their applications, and acknowledge and agree that they are solely responsible for all legal, regulatory and safety-related requirements concerning their products and any use of TI products in such safety-critical applications, notwithstanding any applications-related information or support that may be provided by TI. Further, Buyers must fully indemnify TI and its representatives against any damages arising out of the use of TI products in such safety-critical applications.

TI products are neither designed nor intended for use in military/aerospace applications or environments unless the TI products are specifically designated by TI as military-grade or "enhanced plastic." Only products designated by TI as military-grade meet military specifications. Buyers acknowledge and agree that any such use of TI products which TI has not designated as military-grade is solely at the Buyer's risk, and that they are solely responsible for compliance with all legal and regulatory requirements in connection with such use.

TI products are neither designed nor intended for use in automotive applications or environments unless the specific TI products are designated by TI as compliant with ISO/TS 16949 requirements. Buyers acknowledge and agree that, if they use any non-designated products in automotive applications, TI will not be responsible for any failure to meet such requirements.

Following are URLs where you can obtain information on other Texas Instruments products and application solutions:

Products

Audio	www.ti.com/audio
Amplifiers	amplifier.ti.com
Data Converters	dataconverter.ti.com
DLP® Products	www.dlp.com
DSP	dsp.ti.com
Clocks and Timers	www.ti.com/clocks
Interface	interface.ti.com
Logic	logic.ti.com
Power Mgmt	power.ti.com
Microcontrollers	microcontroller.ti.com
RFID	www.ti-rfid.com
OMAP Mobile Processors	www.ti.com/omap
Wireless Connectivity	www.ti.com/wirelessconnectivity

Applications

Communications and Telecom	www.ti.com/communications
Computers and Peripherals	www.ti.com/computers
Consumer Electronics	www.ti.com/consumer-apps
Energy and Lighting	www.ti.com/energy
Industrial	www.ti.com/industrial
Medical	www.ti.com/medical
Security	www.ti.com/security
Space, Avionics and Defense	www.ti.com/space-avionics-defense
Transportation and Automotive	www.ti.com/automotive
Video and Imaging	www.ti.com/video

TI E2E Community Home Page

e2e.ti.com

Mailing Address: Texas Instruments, Post Office Box 655303, Dallas, Texas 75265
Copyright © 2011, Texas Instruments Incorporated