

KRTM 20

Contrast scanner RGB



**12mm
20mm
50mm**



- Freely programmable via protocol interface
- Freely adjustable transmitter colour, amplification and switching threshold
- Response time digital/analogue: 20µs/ 6.25µs
- Analogue and digital output
- Parameterisation input

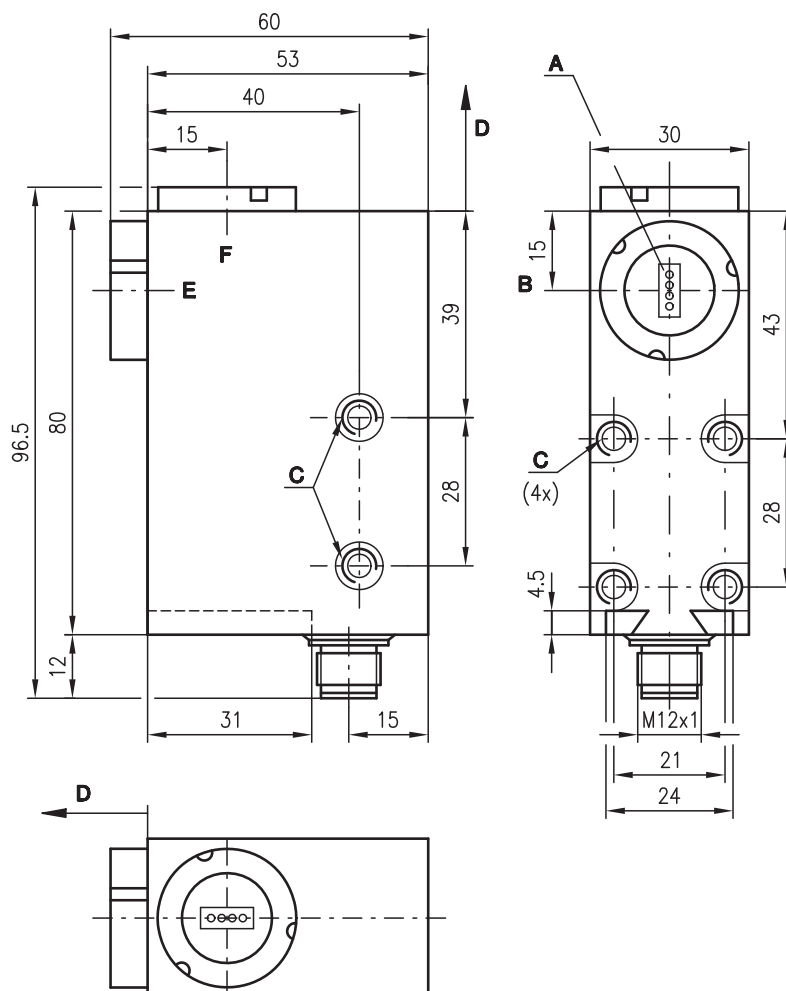


Accessories:

(available separately)

- M12 connectors, 5-pin (KD ...)
- Ready-made cables (K-D ...)
- Interchangeable objectives
- Tool for changing objectives

Dimensioned drawing



- A Light spot orientation vertical
- B Optical axis
- C M5/5.5mm deep
- D Scanning range
- E Front
- F Head

Electrical connection

12-30V DC +	1	br/BN
1-10mA	2	ws/WH
GND	3	bl/BU
Q	4	sw/BK
Input	5	gr/GR

Specifications

Optical data

Scanning range with objective 1 (accessory)	12 mm ± 1 mm
Scanning range with objective 2	20 mm ± 2 mm
Scanning range with objective 3 (accessory)	50 mm ± 5 mm
Light spot dimensions with objective 1	3.0 mm x 1.0 mm
Light spot dimensions with objective 2	4.0 mm x 1.2 mm
Light spot dimensions with objective 3	10.0 mm x 2.0 mm
Light spot orientation	vertical
Light source	LEDs (red, green, blue)

Timing

Digital switching frequency	max. 25 kHz
Response time digital/analogue	min. 20 µs/6.25 µs
Delay before start-up	≤ 250 ms

Electrical data

Operating voltage U_B	12 ... 30 VDC (incl. residual ripple)
Residual ripple	≤ 15% of U_B
Switching output	PNP
Function characteristics	light switching
Analogue output	1 ... 10 mA
Signal voltage high/low	$\geq (U_B - 2V) / \leq 2V$
Output current	max. 100 mA
Bias current	≤ 60 mA

Indicators

LED green 1	ON "ready"
LED green 2	without function
LED green 3	without function
LED yellow	Q/T "object detected"
LED yellow flashing	Q/T "device error, teach error"

Keyboard

Delay button	locked (see remarks)
L/D button	locked (see remarks)
Teach button	locked

Mechanical data

Housing	diecast zinc
Optics cover	glass
Weight	300 g
Connection type	M12 connector, stainless steel, 5-pin

Environmental data

Ambient temp. (operation/storage)	-25 °C ... +60 °C / -40 °C ... +70 °C
Protection class	IP 67
LED class	1 (acc. to EN 60825-1)
VDE safety class	II
Protective circuit ¹⁾	2, 3
Standards applied	IEC 60947-5-2

Options

Input for parameterisation	
PNP: active / not active	$U_B/0V$ or not connected

1) 2=polarity reversal protection, 3=short-circuit protection for all outputs

Order guide

See section 4. Preferred types

Tables

Diagrams

Remarks

- With shiny objects, the sensor is to be mounted at an angle to the object surface.
- The objectives and objective covers must not be removed.
- Keyboard is disabled.
- Button LEDs must be "OFF".
- L/D and Delay buttons
 - **KRTM 20...-0001-S12:** Dynamic keyboard locking (operable for approx. 10s after power-on).
 - **KRTM 20...-0002-S12:** Static keyboard locking (not operable).

KRTM 20

1. Function principle of the contrast scanner

This contrast scanner is a device which, with the aid of multiple transmitter colours (red, green, blue), can differentiate between extremely small differences in contrast (grey tones). A protocol interface allows the transmitter colour, amplification and switching threshold to be freely programmed. Additionally, all internal values (including analogue value) can be read back via this protocol interface.

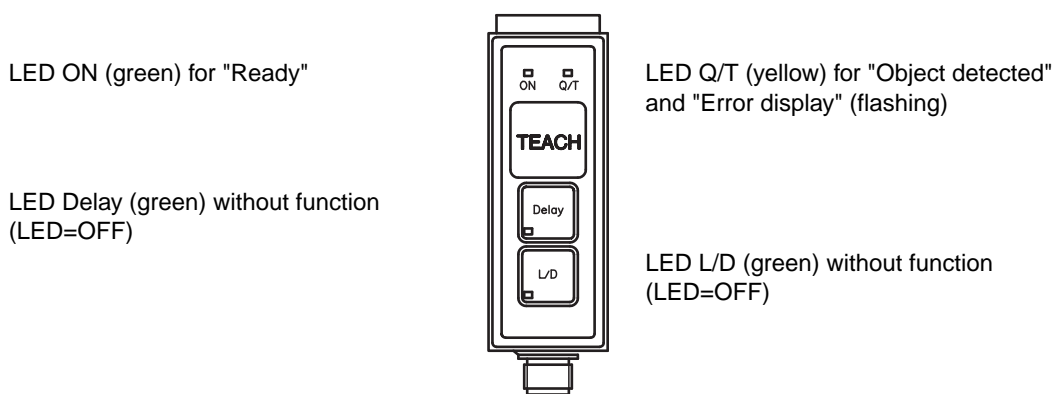
As a result, the primary control can influence all sensor properties and also read back the actual measurement values in digital form. The switching threshold can also be freely adapted.

Once parameterisation has been completed, the sensor functions as a standard contrast scanner and outputs the measurement values via the analogue output and switching output.

Each transmitter colour consists of 4 LEDs. A longish light spot with four points is formed in the focal point.

This very small, extremely bright light spot guarantees a high repeatability and positioning accuracy. For the case that the marker or background is not optimally printed, the light spot can be focused by slightly changing the scanning distance in such a way that a homogeneous, rectangular light spot is formed.

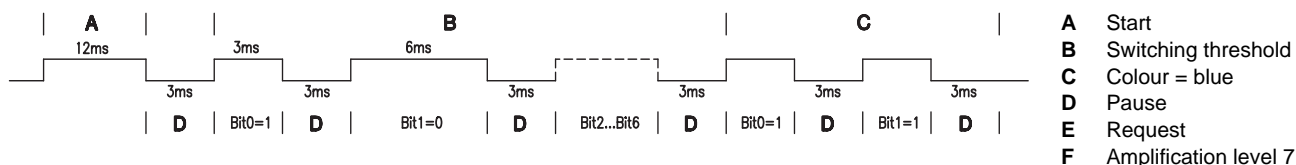
2. Controls and indicators



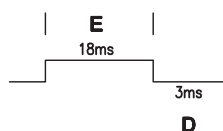
3. Signal response

Data pulses:	3ms = 1, 6ms = 0	(High level)
	Pause = 3ms	(Low level)
Adjustable values:	Switching threshold:	0 ... 127 (Bit0 ... Bit6)
	Transmitter colour:	1 ... 3 (Bit0 ... Bit1), 1 = Red, 2 = Green, 3 = Blue
	Amplification level:	0 ... 8 (Bit0 ... Bit7)
	Analogue value:	0 ... 255 (Bit0 ... Bit7)

Parameterisation of switching threshold and transmitter colour:



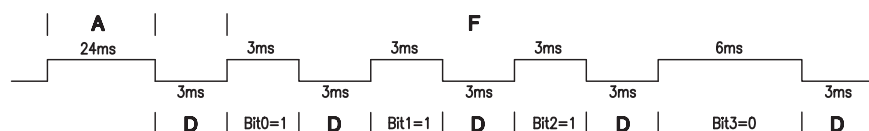
Request for switching threshold:



Acknowledgement of switching threshold and transmitter colour:

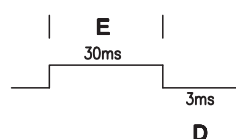


Parameterisation of amplification level:

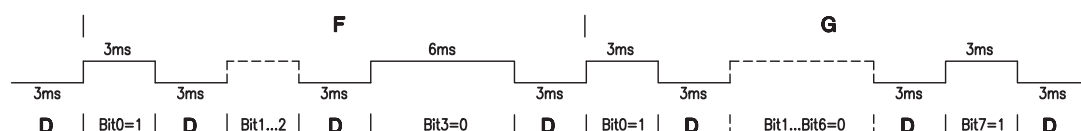


- A** Start
- B** Switching threshold
- C** Colour = blue
- D** Pause
- E** Request
- F** Amplification level = 7
- G** Analogue value = 129

Request for amplification level and analogue value:



Acknowledgement of amplification level and analogue value:



4. Preferred types

Selection table		Order code →																	
Equipment ↓		KRTM 20M/V-20-0001-S12 Part No. 500 35674	KRTM 20M/V-20-0002-S12 Part No. 501 09183																
Scanning range	12mm																		
	20mm	●	●																
	50mm																		
Transmitter colour	RGB	●	●																
	green																		
	red																		
Light spot orientation	vertical	●	●																
	horizontal																		
	round																		
Optical outlet	front																		
	head	●	●																
Output wiring	PNP	●	●																
	NPN																		
	analogue current	●	●																
Other features	programmable via protocol interface	●	●																
	static keyboard locking		●																
	dynamic keyboard locking	●																	

Additional types on request