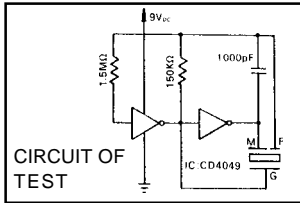


## KPT3-4100 series Piezo Transducer

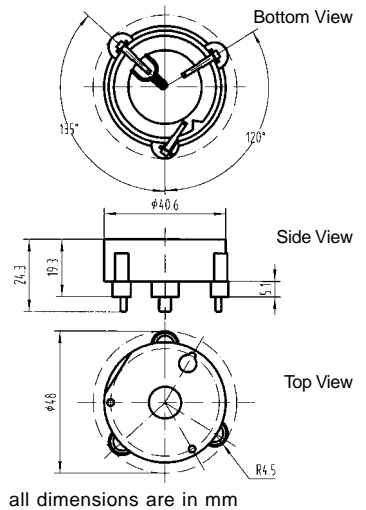
**Model No** KPT3-4100

Rated Voltage	9VDC
Operating Voltage	6/12VDC
Max. Rated Current	10mA at 9VDC
Min. Sound Pressure Level	95dB at 9VDC/30cm
Resonant Frequency	3.4j±0.5KHz
Tone Nature	Continuous
Operating Temperature	-20~+60jæ
Weight	11g



color straw yellow  
PA66 Housing Material  
Pin Terminal

## DIMENSIONS

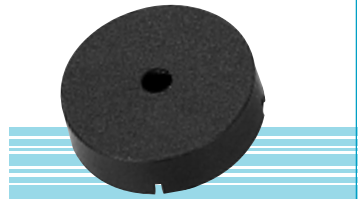
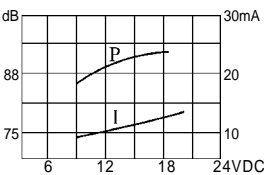
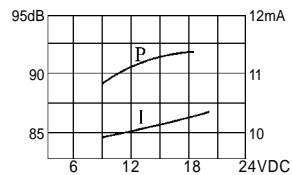
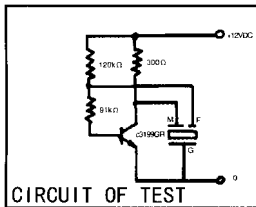


\* Value applying at rated voltage

## KPT3-2510 series Piezo Transducer

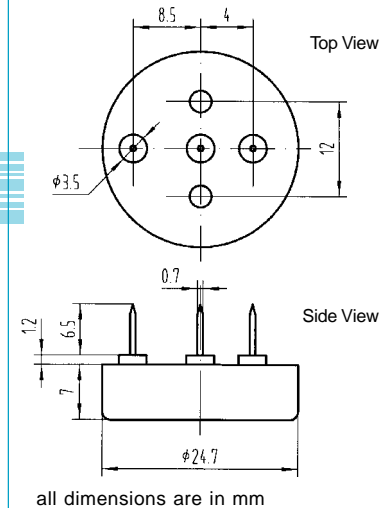
**Model No** KPT3-2512 KPT3-2510

Rated Voltage	12VDC	12VDC
Operating Voltage	3~24VDC	3~24VDC
Max. Rated Current	25mA at 12VDC	18mA at 12VDC
Min. Sound Pressure Level	88dB at 12VDC/10cm	90dB at 12VDC/10cm
Resonant Frequency	3.5j±0.5KHz	6.0j±0.5KHz
Tone Nature	Continuous	Continuous
Operating Temperature	-20~+80jæ	-20~+80jæ
Weight	4g	4g



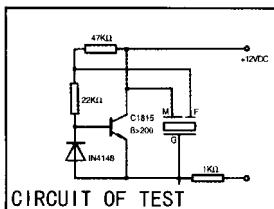
color Black  
PA Housing Material  
Pin Terminal

## DIMENSIONS

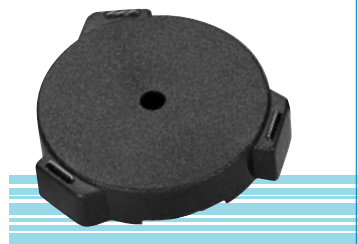


\* Value applying at rated voltage

## KPT3-3320 series Piezo Transducer

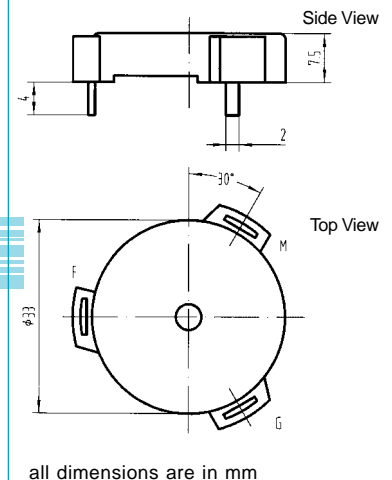
**Model No** KPT3-3320

Rated Voltage	12VDC
Operating Voltage	3~24VDC
Max. Rated Current	8mA at 12VDC
Min. Sound Pressure Level	75dB at 12VDC/30cm
Resonant Frequency	2.0j±0.5KHz
Tone Nature	Continuous
Operating Temperature	-20~+80jæ
Weight	5g



color Black  
PBT Housing Material  
Pin Terminal

## DIMENSIONS



\* Value applying at rated voltage