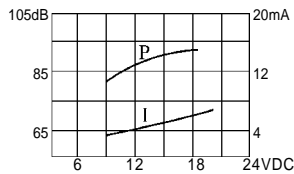
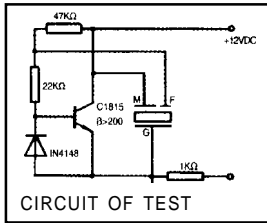


## KPT3-3000 series Piezo Transducer



**Model No** KPT3-3000

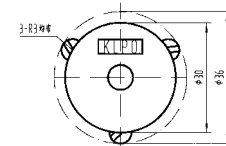
Rated Voltage	12VDC
Operating Voltage	3~24VDC
Max. Rated Current	12mA at 12VDC
Min. Sound Pressure Level	80dB at 12VDC / 30cm
Resonant Frequency	3.7±0.5KHz
Tone Nature	Continuous
Operating Temperature	-20~+80℃
Weight	4g

\* Value applying at rated voltage

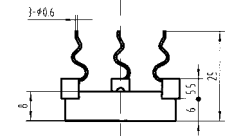


color Black  
PBT Housing Material  
Pin Terminal

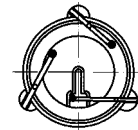
### DIMENSIONS



Top View



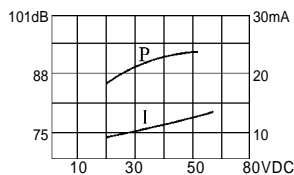
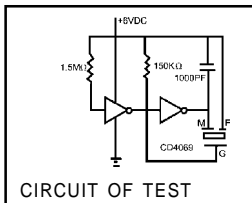
Side View



Bottom View

all dimensions are in mm

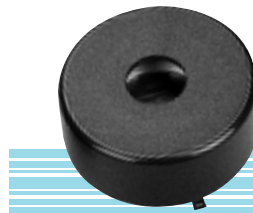
## KPT3-4010G series Piezo Transducer



**Model No** KPT3-4010G

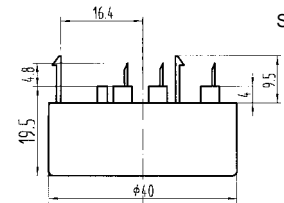
Rated Voltage	9VDC
Operating Voltage	6~15VDC
Max. Rated Current	16mA at 9VDC
Min. Sound Pressure Level	90dB at 9VDC/30cm
Resonant Frequency	3.4±0.5KHz
Tone Nature	Continuous
Operating Temperature	-20~+80℃
Weight	13g

\* Value applying at rated voltage

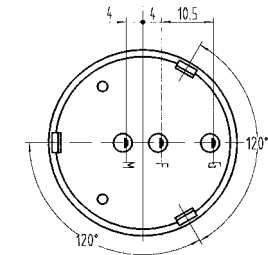


color Black  
PA Housing Material  
Pin Terminal

### DIMENSIONS



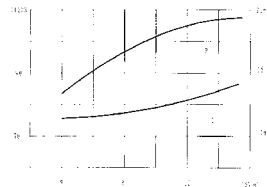
Side View



Top View

all dimensions are in mm

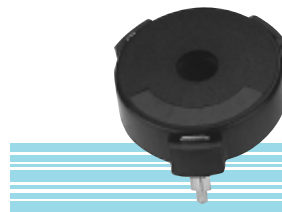
## KPT3-3039series Piezo Telephone Ringer



**Model No** KPT3-3039

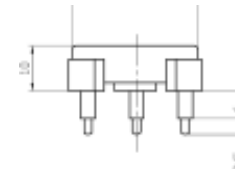
Rated Voltage	12VDC
Operating Voltage	3-18VDC
Max. Rated Current	15mA at 12VDC
Min. Sound Pressure Level	100dB at 12VDC/10cm
Tone Nature	Continuous
Capacitance at 100Hz	CM±19000pF±30% CF±2000pF±30%
Rated Frequency	3.9±0.5KHz
Housing Material/Color	PBT/Black
Operating Temperature	-20~+80℃
Store Temperature	-30~+100℃
Weight	6g

\* Value applying at rated voltage

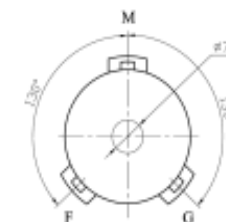


color Black  
ABS Housing Material  
Lead Terminal

### DIMENSIONS



Side View



Top View

all dimensions are in mm