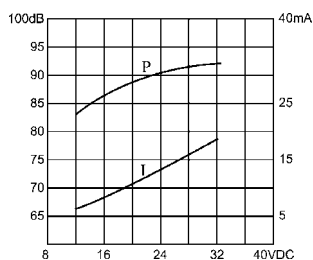
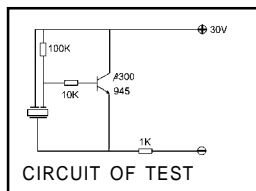
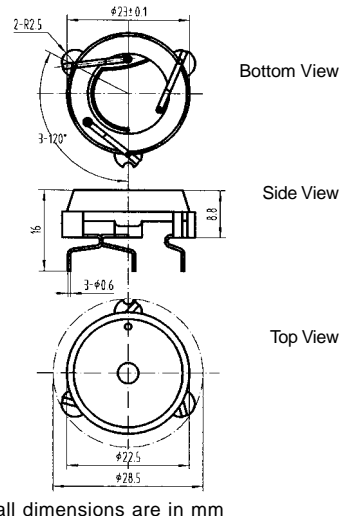


KPT3-2330 series Piezo Transducer



color White
PBT Housing Material
Pin Terminal

DIMENSIONS



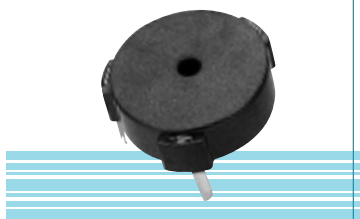
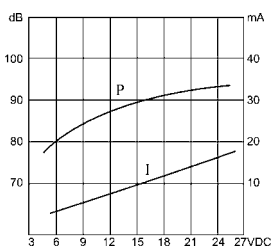
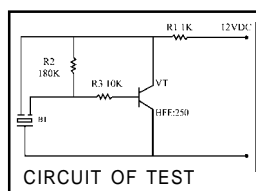
Model No

KPT3-2330

Rated Voltage	30VDC
Operating Voltage	3-40VDC
Max. Rated Current	25mA at 30VDC
Min. Sound Pressure Level	75dB at 30VDC / 1m
Resonant Frequency	4.0 _j ±0.5 KHz
Tone Nature	Continuous
Operating Temperature	-20~+70jæ
Weight	2g

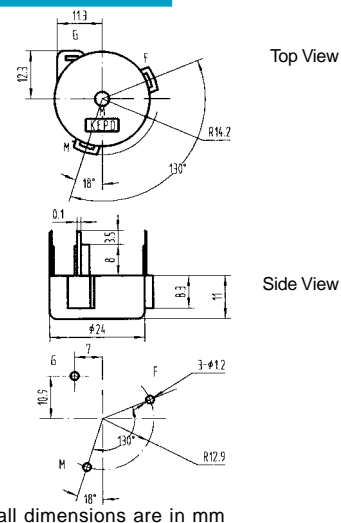
* Value applying at rated voltage

KPT3-2438 series Piezo Transducer



color Black
PA Housing Material
Pin Terminal

DIMENSIONS



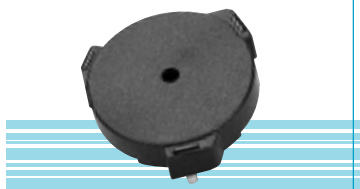
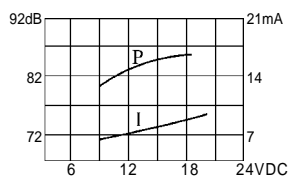
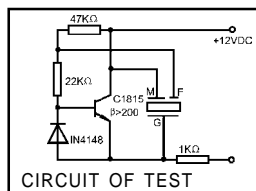
Model No

KPT3-2438

Rated Voltage	9 VDC
Operating Voltage	3-27 VDC
Max. Rated Current	9mA at 9VDC
Min Sound Pressure Level	80dB at 9VDC / 30cm
Resonant Frequency	4.0 _j ±0.5 KHz
Tone Nature	Continuous
Operating Temperature	-20~+70jæ
Weight	3.8g

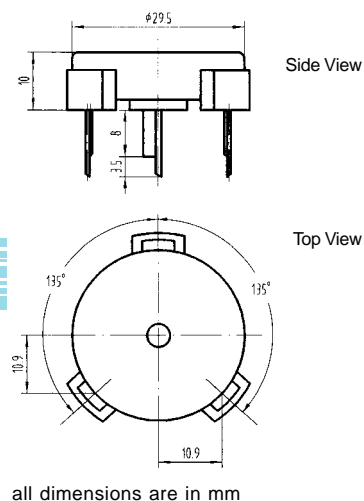
* Value applying at rated voltage

KPT3-3030 series Piezo Transducer



color Black
ABS Housing Material
Pin Terminal

DIMENSIONS



Model No

KPT3-3030

Rated Voltage	12VDC
Operating Voltage	3-24VDC
Max. Rated Current	7mA at 12VDC
Min. Sound Pressure Level	82dB at 12VDC / 10cm
Resonant Frequency	2.7 _j ±0.5 KHz
Tone Nature	Continuous
Operating Temperature	-20~+80jæ
Weight	6g

* Value applying at rated voltage