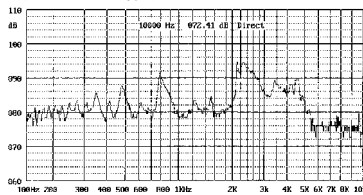


## KPM-1205A series Magnetic Buzzer

## FREQUENCY RESPONSE

[actual curve of type]



applied voltage: 5V, 1/2 duty, square wave distance for measurement: 10cm

Model No KPM1205A

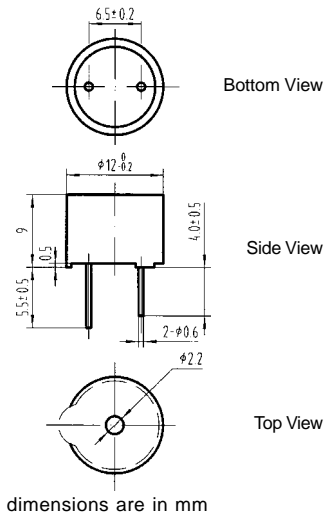
Rated Voltage	5V
Operating Voltage	4~8V
Max. Rated Current	40mA
Coil Resistance (DC)	45 $\pm$ 5 $\Omega$
Coil Impedance (AC)	80 $\Omega$
Min. Sound Pressure Level	85dB/10cm
Resonant Frequency	2400Hz
Operating Temperature	-20~+70 $^{\circ}$ C
Weight	2g

\* Value applying at rated voltage



color Black  
PBT Housing Material  
Pin Terminal

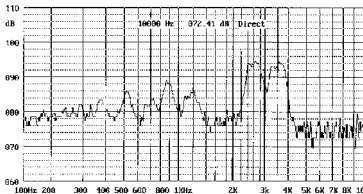
## DIMENSIONS



## KPM-1212A series Magnetic Buzzer

## FREQUENCY RESPONSE

[actual curve of type]

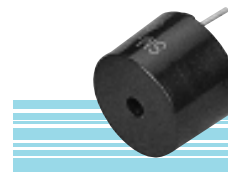


applied voltage: 12V, 1/2 duty, square wave distance for measurement: 10cm

Model No KPM-1212A

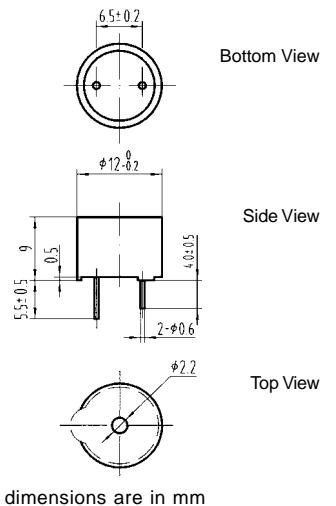
Rated Voltage	12V
Operating Voltage	8~16V
Max. Rated Current	40mA
Coil Resistance (DC)	140 $\pm$ 14 $\Omega$
Coil Impedance (AC)	240 $\Omega$
Min. Sound Pressure Level	85dB/10cm
Resonant Frequency	2400Hz
Operating Temperature	-20~+70 $^{\circ}$ C
Weight	2g

\* Value applying at rated voltage



color Black  
PBT Housing Material  
Pin Terminal

## DIMENSIONS



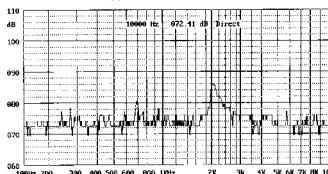
## KPM-1600A series Magnetic Buzzer

Model No KPM-1601A KPM-1605A KPM-1612A

Rated Voltage	1.5V	5V	12V
Operating Voltage	1~2V	4~8V	9~15V
Max. Rated Current	15mA	40mA	40mA
Coil Resistance (DC)	27 $\pm$ 3 $\Omega$	50 $\pm$ 5 $\Omega$	115 $\pm$ 12 $\Omega$
Coil Impedance (AC)	80 $\Omega$	110 $\Omega$	200 $\Omega$
Min. Sound Pressure Level	80dB/10cm	85dB/10cm	85dB/10cm
Resonant Frequency	2048Hz	2048Hz	2048Hz
Operating Temperature	-20~+70 $^{\circ}$ C	-20~+70 $^{\circ}$ C	-20~+70 $^{\circ}$ C
Weight	7g	7g	7g

## FREQUENCY RESPONSE

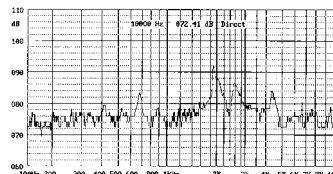
[actual curve of type]



applied voltage: 1.5V, 1/2 duty, square wave distance for measurement: 10cm

## FREQUENCY RESPONSE

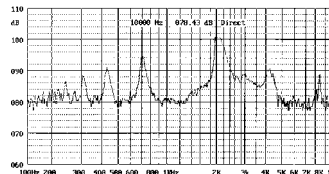
[actual curve of type]



applied voltage: 5V, 1/2 duty, square wave distance for measurement: 10cm

## FREQUENCY RESPONSE

[actual curve of type]

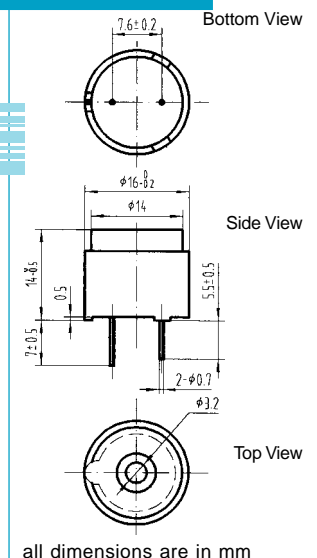


applied voltage: 12V, 1/2 duty, square wave distance for measurement: 10cm



color Black  
MPPO Housing Material  
Pin Terminal

## DIMENSIONS



\* Value applying at rated voltage