



KBU15005 THRU KBU1510

**Single Phase 15 AMPS.
Glass Passivated Bridge Rectifiers**

**Voltage Range
50 to 1000 Volts
Current
15 Amperes**

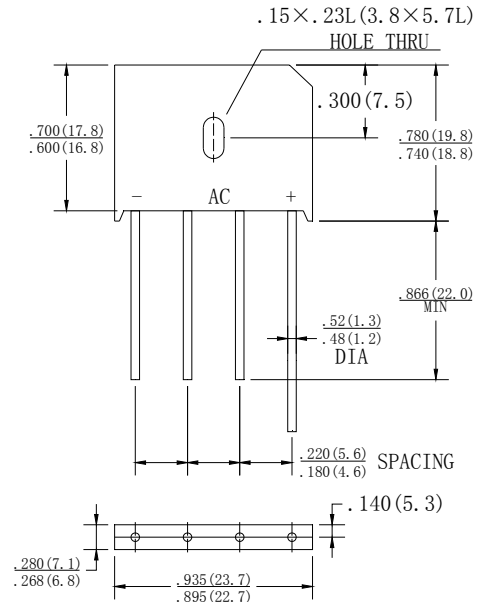
Features

- UL Recognized File # E-230084
- Ideal for printed circuit board
- Reliable low cost construction technique results in inexpensive product
- High temperature soldering guaranteed:
260°C / 10 seconds / 0.375" (9.5mm)
lead length at 5 lbs., (2.3 kg) tension

Mechanical Data

- Case: Molded plastic
- Lead: solder plated
- Polarity: As marked

KBU



Dimensions in inches and (millimeters)

MAXIMUM RATINGS AND ELECTRICAL CHARACTERISTICS

Rating at 25°C ambient temperature unless otherwise specified.

Single phase, half wave, 60 Hz, resistive or inductive load.

For capacitive load, derate current by 20%

| Type Number | | KBU 15005 | KBU 1501 | KBU 1502 | KBU 1504 | KBU 1506 | KBU 1508 | KBU 1510 | UNITS |
|---|-------------------|--------------|-------------|-------------|-------------|-------------|-------------|-------------|-------|
| Maximum Repetitive Peak Reverse Voltage | VRRM | 50 | 100 | 200 | 400 | 600 | 800 | 1000 | V |
| Maximum RMS Voltage | VRMS | 35 | 70 | 140 | 280 | 420 | 560 | 700 | V |
| Maximum DC blocking Voltage | VDC | 50 | 100 | 200 | 400 | 600 | 800 | 1000 | V |
| Maximum Average Forward Rectified Current @T _c = 100°C | I(AV) | 15.0 | | | | | | | A |
| Peak Forward Surge Current, 8.3 ms Single Half Sine-wave Superimposed on Rated Load (JEDEC method) | I _{FSM} | 300 | | | | | | | A |
| Maximum Instantaneous Forward Voltage @ 7.5A | V _F | 1.1 | | | | | | | V |
| Maximum DC Reverse Current @ TA=25°C rated DC blocking voltage per leg TA = 125°C | I _R | 10 500 | | | | | | | μ A |
| Typical Thermal Resistance (Note) | R θ _{JC} | 0.8 | | | | | | | °C/W |
| Operating Temperature Range | T _J | -55 to +125 | | | | | | | °C |
| Storage Temperature Range | T _{STG} | -55 to +125 | | | | | | | °C |

NOTE: Device Mounted on 100×100×1.6mm Cu Plate Heatsink.

RATING AND CHARACTERISTIC CURVES

KBU15005 THRU KBU1510



FIG.1-MAXIMUM NONO-REPETITIVE FORWARD SURGE CURRENT PER BRIDGE ELELMENT

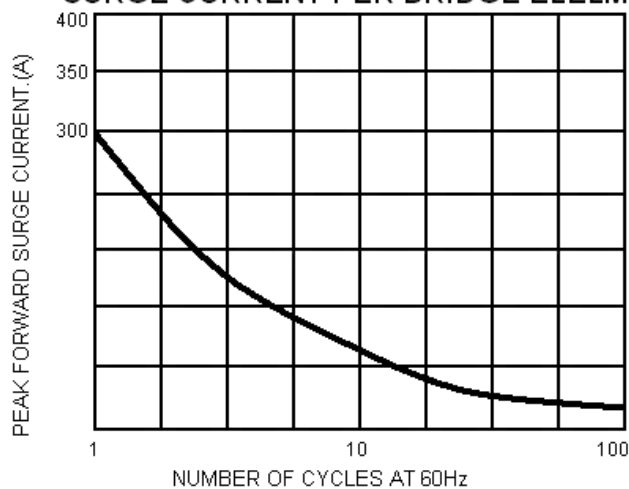


FIG.2-MAXIMUM FORWARD CURRENT DERATING CURVE

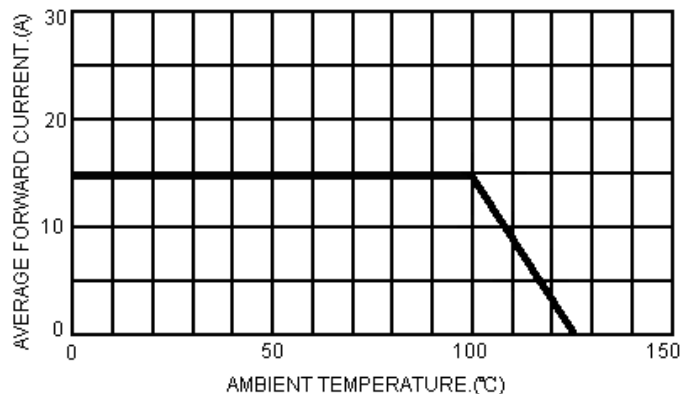


FIG.3-TYPICAL INSTANTANEOUS FORWARD CHARACTERISTICS PER BRIDGE ELEMENT

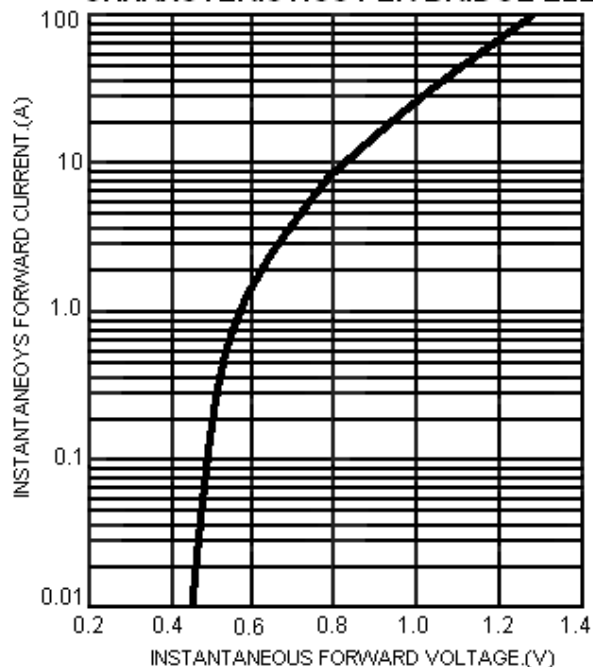


FIG.4-TYPICAL REVERSE CHARACTERISTICS PER BRIDGE ELEMENT

