

## Description

The IT7453 is a high efficiency step-up DC/DC converter using a constant frequency, current mode architecture. Featuring current-mode and fixed frequency operation, this device incorporates an integrated main switch and the switching frequency is internally set at 1.3MHz, allowing the use of small surface mount inductors and capacitor. As for the output voltage, it can be regulated ranging from 2.7V to 30V. The IT7453 is available in a low profile TSOT25 package

## Features

- High Efficiency up to 90%
- 2.5V to 5.5V Input Voltage Range
- Internal 1.45A Current Limit
- 1.3MHz Constant Frequency Operation
- Current Mode Operation
- Thermal Shutdown
- Undervoltage-Lockout (UVLO)
- < 0.1 $\mu$ A Shutdown Current
- TSOT25 Small Package
- RoHS Compliant (100% Green available)

## Applications

- Cellular Telephones
- PDAs and Smart Phones
- MP3 Players
- Wireless and DSL Card
- Digital Still Cameras
- Slim-Type DVD
- Portable Instruments

## Typical Applications

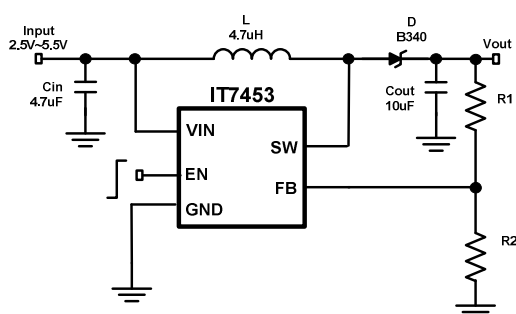


Figure 1. Typical Application Circuit

