



Preliminary
Data

DIM600XSM45-F000

Single Switch IGBT Module

DS5874-1.0 October 2005 (LN24333)

FEATURES

- 10 μ s Short Circuit Withstand
- Soft Punch Through Silicon
- Lead Free construction
- Isolated MMC Base with AlN Substrates
- High Thermal Cycling Capability

APPLICATIONS

- High Reliability Inverters
- Motor Controllers
- Traction Drives
- Choppers

The Powerline range of high power modules includes half bridge, chopper, dual, single and bi-directional switch configurations covering voltages from 600V to 6500V and currents up to 3600A.

The DIM600XSM45-F000 is a single switch 4500V, soft punch through n-channel enhancement mode, insulated gate bipolar transistor (IGBT) module. The IGBT has a wide reverse bias safe operating area (RBSOA) plus 10 μ s short circuit withstand. This device is optimised for traction drives and other applications requiring high thermal cycling capability.

The module incorporates an electrically isolated base plate and low inductance construction enabling circuit designers to optimise circuit layouts and utilise grounded heat sinks for safety.

ORDERING INFORMATION

Order As:

DIM600XSM45-F000

Note: When ordering, please use the complete part number

KEY PARAMETERS

V_{CES} **4500V**

$V_{CE(sat)}$ * **(typ) 3.0 V**

I_C **(max) 600A**

$I_{C(PK)}$ **(max) 1200A**

*(measured at the power busbars and not the auxiliary terminals)

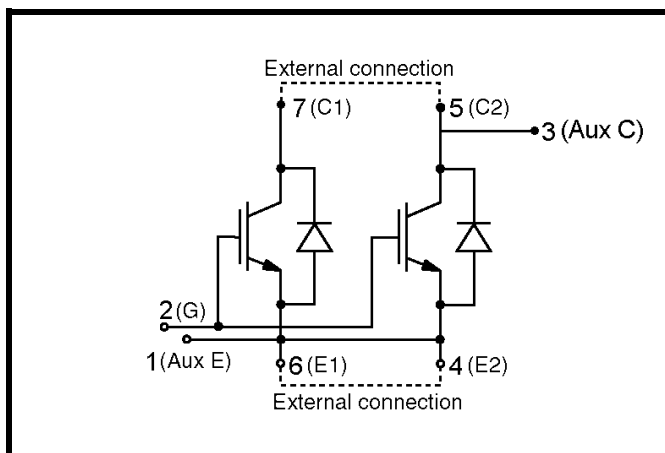


Fig. 1 Single switch circuit diagram

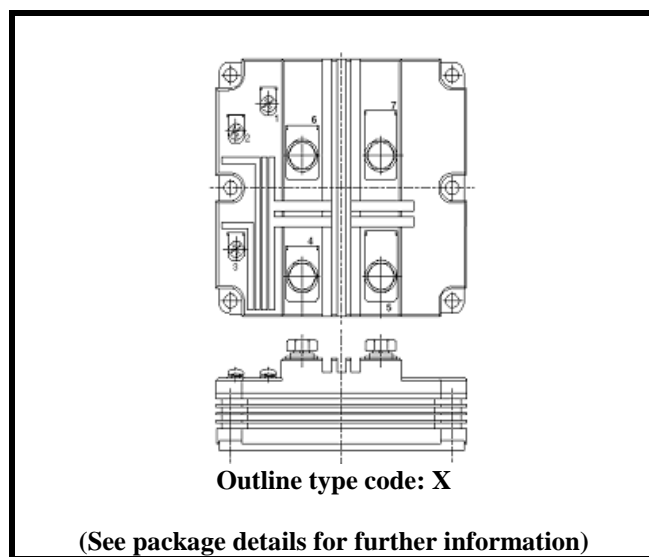


Fig. 2 Electrical connections - (not to scale)

ABSOLUTE MAXIMUM RATINGS

Stresses above those listed under 'Absolute Maximum Ratings' may cause permanent damage to the device. In extreme conditions, as with all semiconductors, this may include potentially hazardous rupture of the package. Appropriate safety precautions should always be followed. Exposure to Absolute Maximum Ratings may affect device reliability.

T_{case} = 25°C unless stated otherwise

Symbol	Parameter	Test Conditions	Max.	Units
V _{CES}	Collector-emitter voltage	V _{GE} = 0V	4500	V
V _{GES}	Gate-emitter voltage		±20	V
I _C	Continuous collector current	T _{case} = 95 °C	600	A
I _{C(PK)}	Peak collector current	1ms, T _{case} = 115 °C	1200	A
P _{max}	Max.transistor power dissipation	T _{case} = 25 °C, T _j = 150 °C	10.4	kW
I ² _t	Diode I ² _t value (Diode arm)	V _R = 0, t _p = 10ms, T _{vj} = 125 °C	TBD	kA ² s
V _{isol}	Isolation voltage-per module	Commoned terminals to base plate. AC RMS, 1 min, 50Hz	7400	kV
Q _{PD}	Partial discharge-per module	IEC1287. V ₁ = 4800V, V ₂ = 3500V, 50Hz RMS	10	pC

THERMAL AND MECHANICAL RATINGS

Internal insulation material:	AlN
Baseplate material:	AlSiC
Creepage distance:	56mm
Clearance:	26mm
CTI (Critical Tracking Index)	> 600

Symbol	Parameter	Test Conditions	Min	Typ.	Max	Units
R _{th(j-c)}	Thermal resistance -transistor (per switch)	Continuous dissipation - junction to case		-	12	°C/kW
R _{th(j-c)}	Thermal resistance -diode (per switch)	Continuous dissipation - junction to case		-	24	°C/kW
R _{th(c-h)}	Thermal resistance -case to heatsink (per module)	Mounting torque 5Nm (with mounting grease)		-	8	°C/kW
T _j	Junction temperature	Transistor	-	-	150	°C
		Diode	-	-	125	°C
T _{stg}	Storage temperature range	-	-40	-	125	°C
	Screw torque	Mounting M6	-	-	5	Nm
		Electrical connections -M4	-	-	2	Nm
		Electrical connections -M8	-	-	10	Nm

ELECTRICAL CHARACTERISTICS**T_{case} = 25°C unless stated otherwise.**

Symbol	Parameter	Test Conditions	Min	Typ	Max	Units
I _{CES}	Collector cut-off current	V _{GE} =0V, V _{CE} =V _{CES}			1	mA
		V _{GE} =0V, V _{CE} =V _{CES} , T _{case} =125 °C			60	mA
I _{GES}	Gate leakage current	V _{GE} =±20V, V _{CE} =0V			8	uA
V _{GE(TH)}	Gate threshold voltage	I _C =80mA, V _{GE} =V _{CE}	5.5	6.5	7.0	V
V _{CE(sat)} [†]	Collector-emitter saturation voltage	V _{GE} =15V, I _C =600A		3.0		V
		V _{GE} =15V, I _C =600A, T _{VJ} =125 °C		3.5		V
I _F	Diode forward current	DC			600	A
I _{FM}	Diode maximum forward current	t _p =1ms			1200	A
V _F	Diode forward voltage	I _F =600A		3.50		V
		I _F =600A, T _{VJ} =125 °C		3.90		V
C _{ies}	Input capacitance	V _{CE} =25V, V _{GE} =0V, f=1MHz		132		nF
C _{res}	Reverse transfer capacitance	V _{CE} =25V, V _{GE} =0V, f=1MHz		1.8		nF
L _M	Module inductance	--		15		nH
R _{INT}	Internal transistor resistance			135		μΩ
SC _{Data}	Short circuit.I SC	T _J ≤125 °C, V _{CC} ≤3000V, I ₁		2800		A
		t _p =10 us, V _{CE(max)} =V _{CES} - L*.di/dt IEC 60747-9 I ₂		2500		A

Note:[†]Measured at the power busbars and not the auxiliary terminals*L is the circuit inductance + L_M

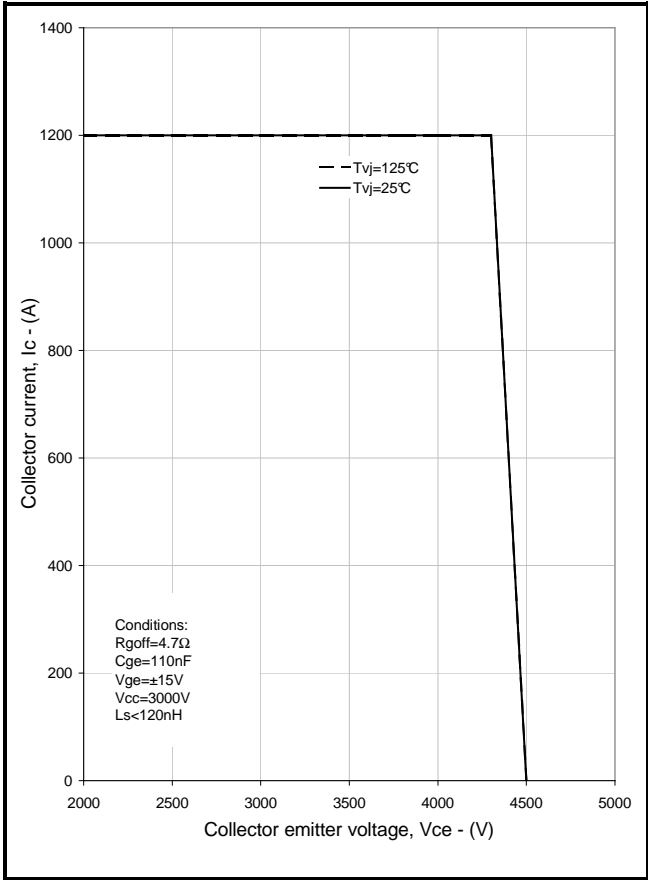
ELECTRICAL CHARACTERISTICS

 $T_{case} = 25^{\circ}\text{C}$ unless stated otherwise

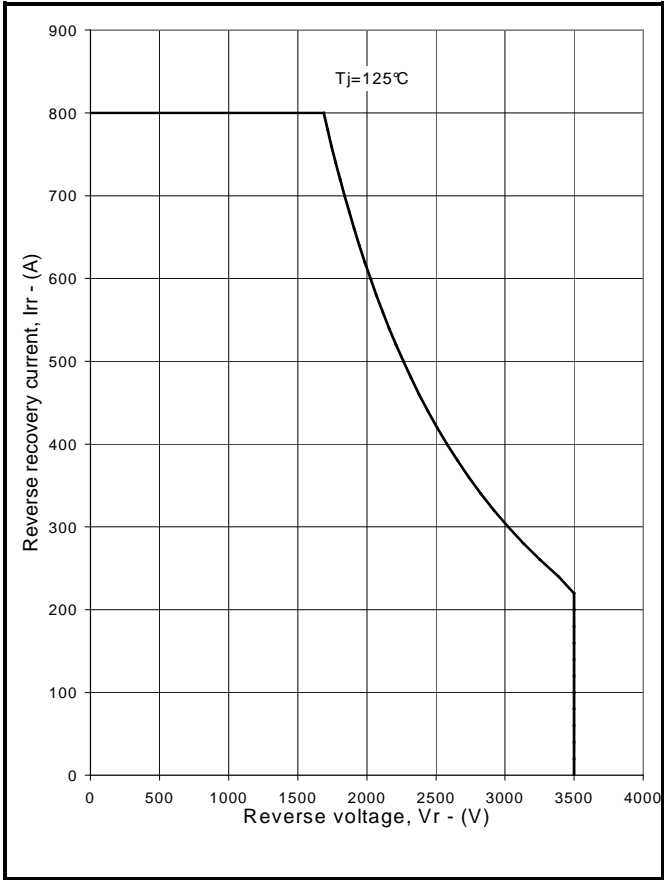
Symbol	Parameter	Test Conditions	Min	Typ.	Max	Units
$t_{d(off)}$	Turn-off delay time	$I_C = 600\text{A}$ $V_{GE} = \pm 15\text{V}$ $V_{CE} = 2250\text{V}$ $R_{G(ON)} = 4.7\Omega$ $R_{G(OFF)} = 11\Omega$ $C_{ge} = 110\text{nF}$ $L \sim 200\text{nH}$		6.0		us
t_f	Fall time			250		ns
E_{OFF}	Turn-off energy loss			1250		mJ
$t_{d(on)}$	Turn-on delay time			900		ns
t_r	Rise time			250		ns
E_{ON}	Turn-on energy loss			3000		mJ
Q_g	Gate charge			TBD		uC
Q_{rr}	Diode reverse recovery charge	$I_F = 600\text{A}, V_{CE} = 2250\text{V},$ $dI_F/dt = 2400\text{A/us}$		TBD		uC
I_{rr}	Diode reverse recovery current			TBD		A
E_{rec}	Diode reverse recovery energy			500		mJ

 $T_{case} = 125^{\circ}\text{C}$ unless stated otherwise

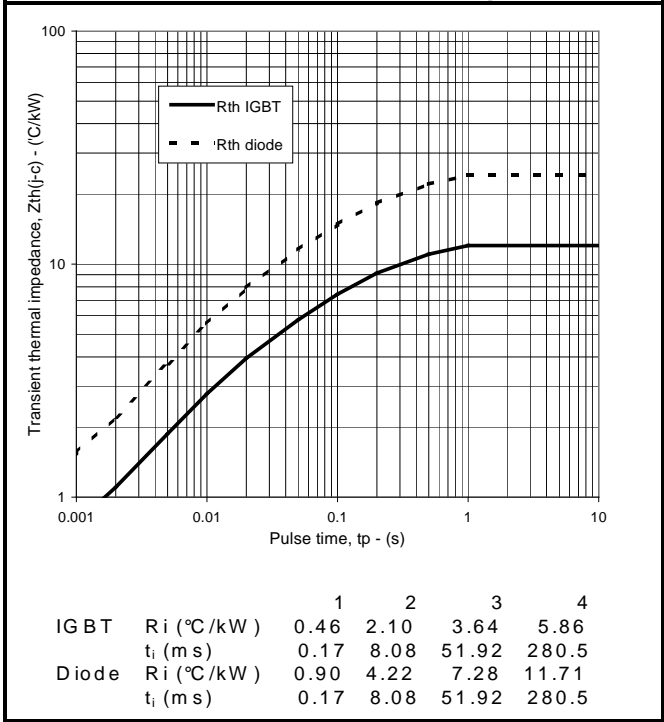
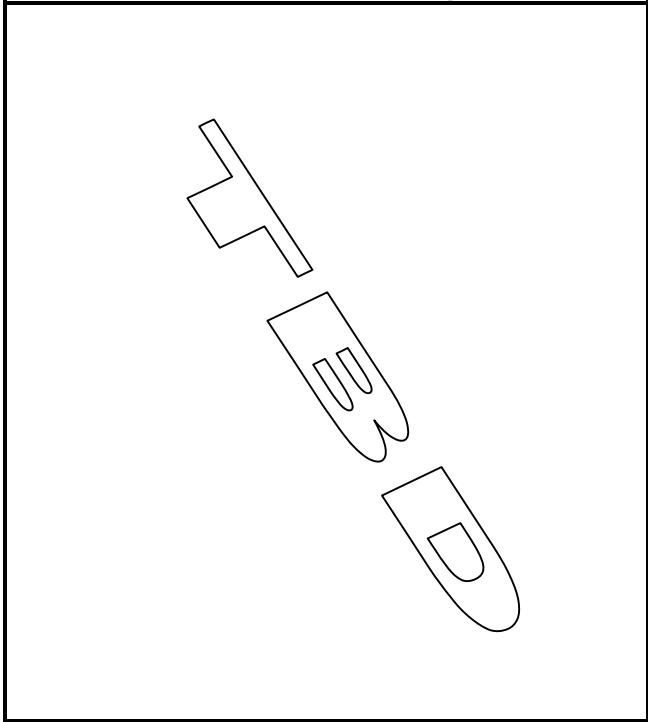
Symbol	Parameter	Test Conditions	Min	Typ.	Max	Units
$t_{d(off)}$	Turn-off delay time	$I_C = 600\text{A}$ $V_{GE} = \pm 15\text{V}$ $V_{CE} = 2250\text{V}$ $R_{G(ON)} = 4.7\Omega$ $R_{G(OFF)} = 11\Omega$ $C_{ge} = 110\text{nF}$ $L \sim 200\text{nH}$		6.0		us
t_f	Fall time			250		ns
E_{OFF}	Turn-off energy loss			1500		mJ
$t_{d(on)}$	Turn-on delay time			700		ns
t_r	Rise time			200		ns
E_{ON}	Turn-on energy loss			3500		mJ
Q_{rr}	Diode reverse recovery charge	$I_F = 600\text{A}, V_{CE} = 2250\text{V},$ $dI_F/dt = 2400\text{A/us}$		TBD		uC
I_{rr}	Diode reverse recovery current			TBD		A
E_{rec}	Diode reverse recovery energy			750		mJ



Reverse bias safe operating area



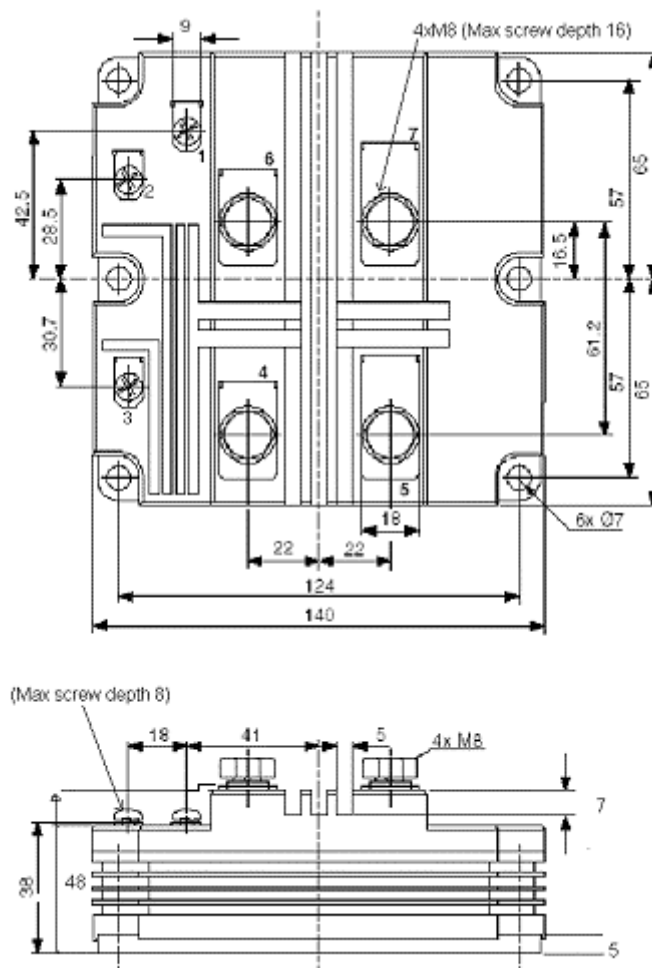
Diode reverse bias safe operating area



Transient thermal impedance

PACKAGE DETAILS

For further package information, please visit our website or contact Customer Services. All dimensions in mm, unless stated otherwise.
DO NOT SCALE.



Nominal weight: 1100g

Module outline type code: X

POWER ASSEMBLY CAPABILITY

The Power Assembly group was set up to provide a support service for those customers requiring more than the basic semiconductor, and has developed a flexible range of heatsink and clamping systems in line with advances in device voltages and current capability of our semiconductors.

We offer an extensive range of air and liquid cooled assemblies covering the full range of circuit designs in general use today. The Assembly group offers high quality engineering support dedicated to designing new units to satisfy the growing needs of our customers.

Using the latest CAD methods our team of design and applications engineers aim to provide the Power Assembly Complete Solution (PACs).

HEATSINKS

The Power Assembly group has its own proprietary range of extruded aluminium heatsinks which have been designed to optimise the performance of Dynex semiconductors. Data with respect to air natural, forced air and liquid cooling (with flow rates) is available on request.

For further information on device clamps, heatsinks and assemblies, please contact your nearest sales representative or Customer Services.



<http://www.dynexsemi.com>

e-mail: power_solutions@dynexsemi.com

HEADQUARTERS OPERATIONS

DYNEX SEMICONDUCTOR LTD

Doddington Road, Lincoln
Lincolnshire, LN6 3LF. United Kingdom.
Fax: +44(0)1522 500550

CUSTOMER SERVICE

Tel: +44(0)1522 502753 / 502901. Fax: +44(0)1522 500020

Tel: +44(0)1522 500500

© Dynex Semiconductor 2003 TECHNICAL DOCUMENTATION – NOT FOR
RESALE. PRODUCED IN UNITED KINGDOM.

Datasheet Annotations:

Dynex Semiconductor annotate datasheets in the top right hand corner of the front page, to indicate product status. The annotations are as follows:-

Target Information: This is the most tentative form of information and represents a very preliminary specification. No actual design work on the product has been started.

Preliminary Information: The product is in design and development. The datasheet represents the product as it is understood but details may change.

Advance Information: The product design is complete and final characterisation for volume production is well in hand.

No Annotation: The product parameters are fixed and the product is available to datasheet specification.

This publication is issued to provide information only which (unless agreed by the Company in writing) may not be used, applied or reproduced for any purpose nor form part of any order or contract nor to be regarded as a representation relating to the products or services concerned. No warranty or guarantee express or implied is made regarding the capability, performance or suitability of any product or service. The Company reserves the right to alter without prior notice the specification, design or price of any product or service. Information concerning possible methods of use is provided as a guide only and does not constitute any guarantee that such methods of use will be satisfactory in a specific piece of equipment. It is the user's responsibility to fully determine the performance and suitability of any equipment using such information and to ensure that any publication or data used is up to date and has not been superseded. These products are not suitable for use in any medical products whose failure to perform may result in significant injury or death to the user. All products and materials are sold and services provided subject to the Company's conditions of sale, which are available on request.

All brand names and product names used in this publication are trademarks, registered trademarks or trade names of their respective owners.