



*Representative photograph, actual product appearance may vary.*

*Due to regional agency approval requirements, some products may not be available in your area. Please contact your regional Honeywell office regarding your product of choice.*

## CSLA2EM

**CSLA Series linear current sensor, 765 A sensed current, sink or source output, through-hole, operates on AC or DC current, bottom mount**

### Features

- Linear output
- AC or DC current sensing
- Through-hole design
- Fast response time
- Output voltage isolation from input
- Minimum energy dissipation
- Maximum current limited only by conductor size
- Adjustable performance and built-in temperature compensation assures reliable operation
- Accurate, low cost sensing
- Operating temperature range -25 °C to 85 °C
- Housing: PBT polyester

### Typical Applications

- Variable speed drives
- Overcurrent protection
- Ground fault detectors
- Current feedback control systems
- Robotics
- UPS and telecommunication power supplies
- Welding power supplies
- Automotive - Battery management systems
- Wattmeters

Description

Honeywell CS series linear current sensors incorporate our 91SS12-2 and SS94A1 linear output Hall effect transducer (LOHET™). The sensing element is assembled in a printed circuit board mountable housing. This housing is available in four configurations. Normal mounting is with 0.375 inch long 4-40 screw and square nut (not provided) inserted in the housing or a 6-20 self-tapping screw. The combination of the sensor, flux collector, and housing comprises the holder assembly. These sensors are ratiometric.



CSLA2EM

CSLA Series linear current sensor, 765 A sensed current, sink or source output, through-hole, operates on AC or DC current, bottom mount

Product Specifications	
Sensor Type	Open Loop Linear
Sensed Current Type	ac or dc
Sensed Current Range	0 A to 765 A
Package Style	PCB Bottom Mount
Output Type	Voltage
Sensitivity	3.1 mV N* ± 0.3 @ 8 Vdc
Supply Current	20 mA max.
Offset Voltage	Vcc/2 ± 2 %
Supply Voltage	5.4 Vdc to 13.2 Vdc
Offset Shift (%/ °C)	± 0.008
Response Time	3 µs
Operating Temperature Range	-25 °C to 85 °C [-13 °F to 185 °F]
Storage Temperature Range	-40 °C to 100°C [-40 °F to 212 °F]
Housing Material	PBT Polyester
Mounting	PCB on 3 pins
Pinout Style	3 pin
Availability	Global

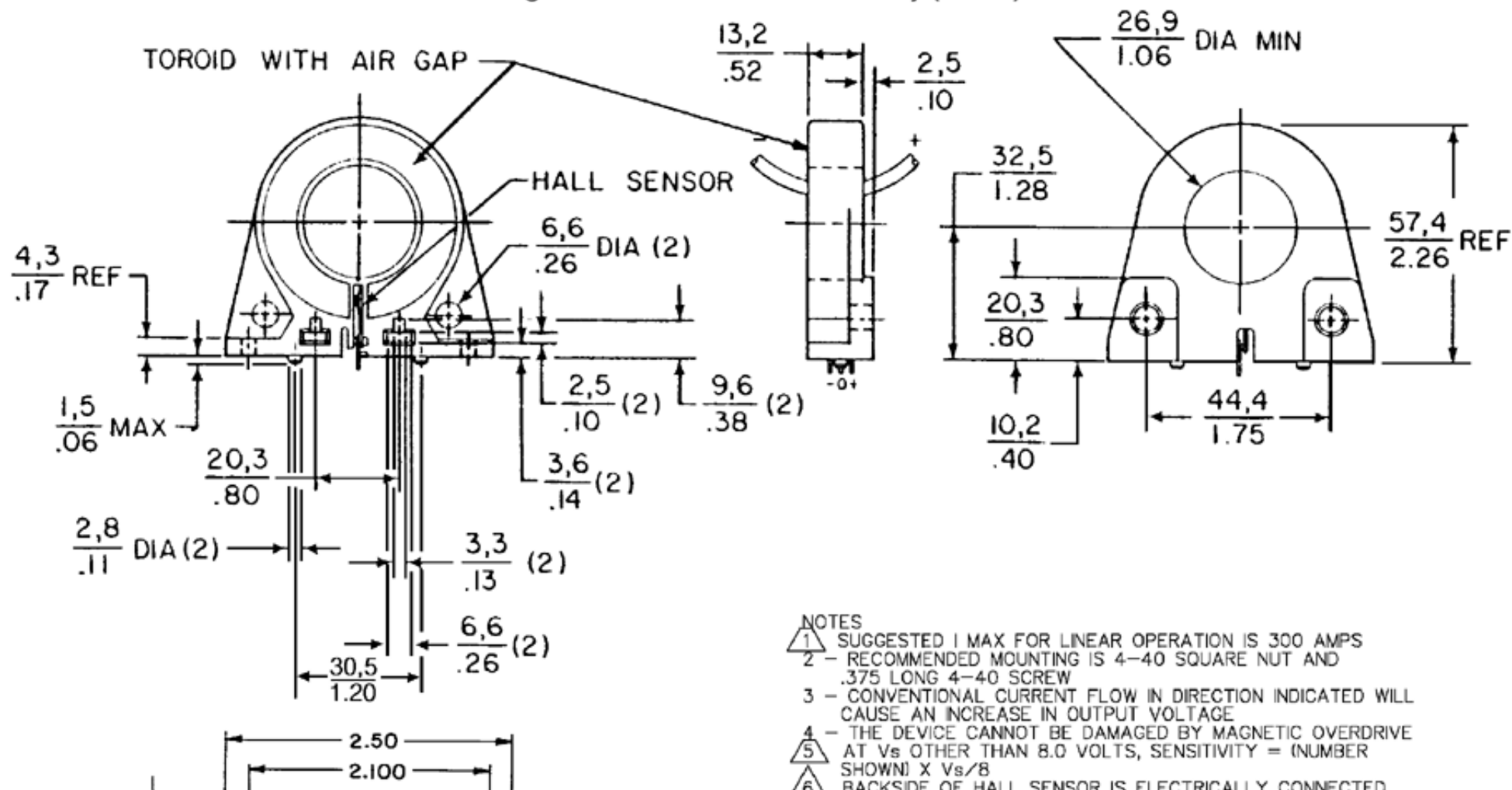
Comment	* N = Number of Turns
UNSPSC Code	411121
UNSPSC Commodity	411121 Transducers
Series Name	CSLA Series

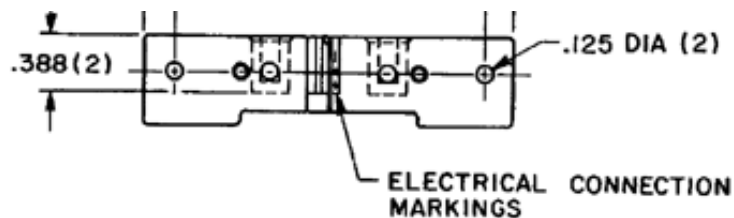
# Honeywell

## CSLA2EM

CSLA Series linear current sensor, 765 A sensed current, sink or source output, through-hole, operates on AC or DC current, bottom mount

Mounting Dimensions - for reference only (mm/in)





TO THE "I" TERMINAL

# Honeywell

## CSLA2EM

CSLA Series linear current sensor, 765 A sensed current, sink or source output, through-hole, operates on AC or DC current, bottom mount

### WARNING

#### PERSONAL INJURY

DO NOT USE these products as safety or emergency stop devices, or in any other application where failure of the product could result in personal injury.

**Failure to comply with these instructions could result in death or serious injury.**

### WARNING

#### MISUSE OF DOCUMENTATION

- The information presented in this product sheet (or catalog) is for reference only. DO NOT USE this document as product installation information.
- Complete installation, operation and maintenance information is provided in the instructions supplied with each product.

**Failure to comply with these instructions could result in death or serious injury.**

© Copyright Honeywell Inc.1998-2004 All rights reserved.