

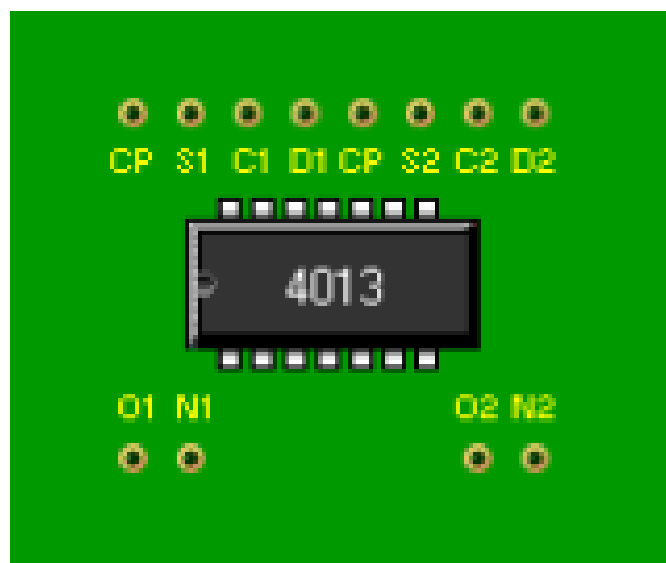
CMOS4013

Dual D-type flip-flop

Since: V1.0

Description

The HEF4013B is a dual D-type flip-flop which features independent set direct (SD), clear direct (CD), clock inputs (CP) and outputs (O, O). Data is accepted when CP is LOW and transferred to the output on the positive-going edge of the clock. The active HIGH asynchronous clear-direct (CD) and set-direct (SD) are independent and override the D or CP inputs. The outputs are buffered for best system performance. Schmitt-trigger action in the clock input makes the circuit highly tolerant to slower clock rise and fall times.



Pinout

Pin	Name	Description
D		data inputs
CP		clock input (L to H edge-triggered)
SD		asynchronous set-direct input (active HIGH)
CD		asynchronous clear-direct input (active HIGH)
O		true output
N		complement output