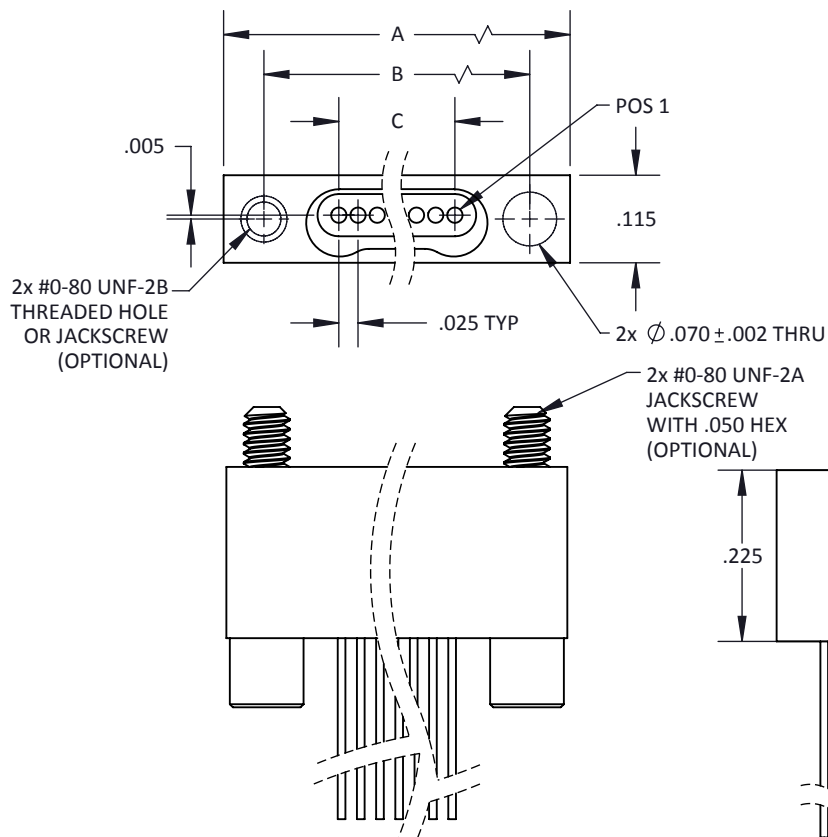
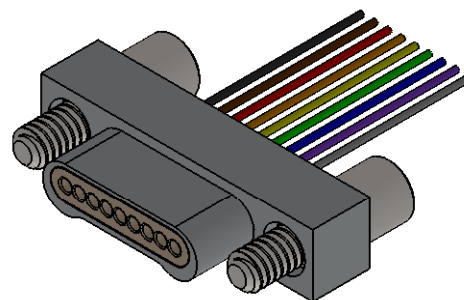


**PLUG**



**RECEPTACLE**

NO. OF CONTACTS	A	B	C
9	.500	.395	.200
15	.650	.545	.350
21	.800	.695	.500
25	.900	.795	.600
31	1.050	.945	.750
37	1.200	1.095	.900
51	1.550	1.445	1.250

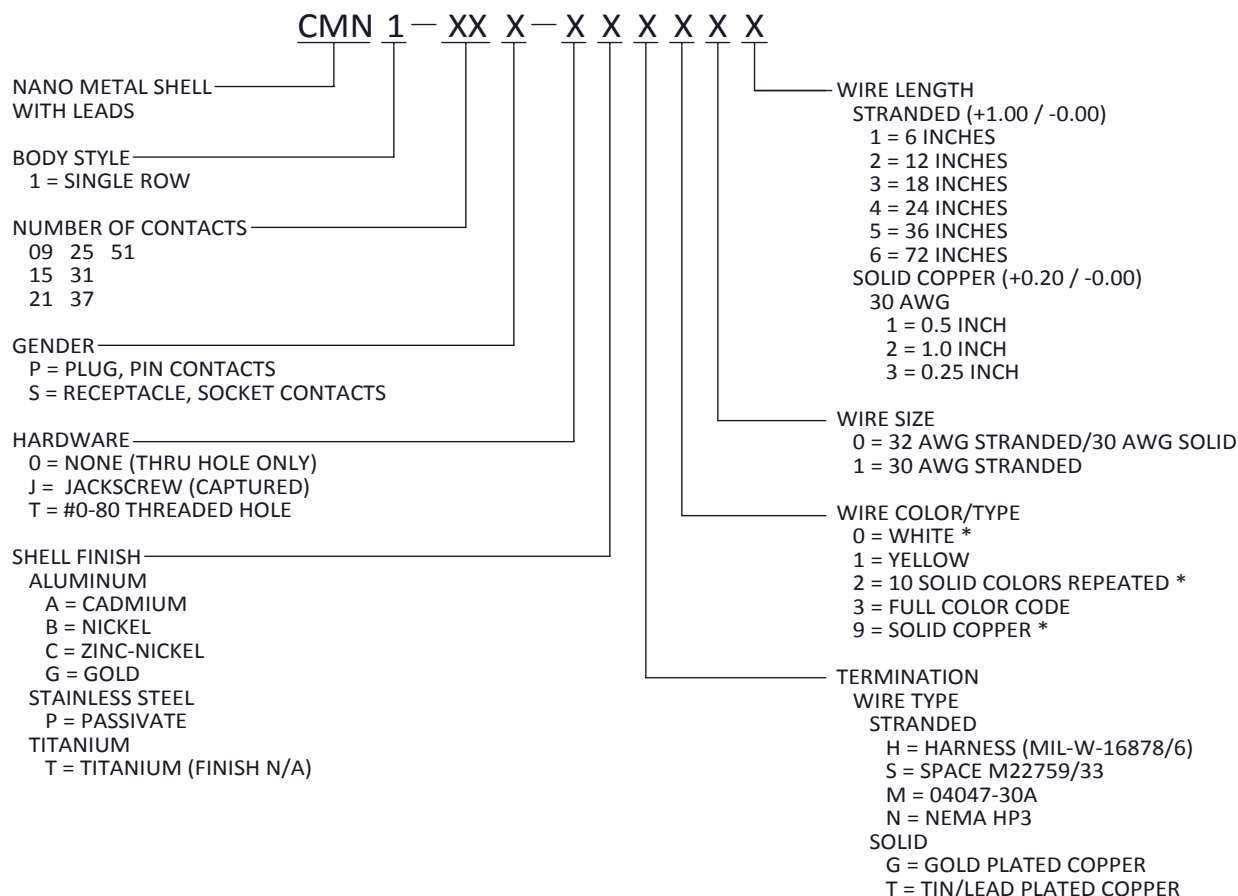
TOLERANCE: .XXX  $\pm .005$   
.XX  $\pm .01$   
ANGLE  $\pm 1^\circ$

TITLE  
**NANO METAL SHELL  
SINGLE ROW  
WITH LEADS**

SHT 1 OF 2

DWG. NO.  
**CMN1**

REV  
**D**



\* = MOST COMMONLY USED & STOCKED WIRE TYPES AND HARDWARE OPTIONS

MATERIALS AND FINISHES ARE IAW MIL-DTL-32139 WHERE APPLICABLE.  
FOR DETAILS SEE MIL-SPEC OR WWW.CRISTEK.COM

1. MATERIALS:  
SHELL - ALUMINUM ALLOY, STAINLESS STEEL OR TITANIUM  
INSULATOR - LIQUID CRYSTAL POLYMER OR  
GLASS FILLED THERMOPLASTIC  
CONTACT - COPPER ALLOY

2. FINISH:  
SHELL - ELECTROLESS NICKEL OR CADMIUM OVER  
ELECTROLESS NICKEL OR PASSIVATE OR GOLD  
OR ZINC NICKEL  
CONTACT - GOLD OVER NICKEL

3. SPECIFICATIONS:  
CURRENT RATING ----- 1 AMP MAX  
TEMPERATURE RATING ----- -55° C TO +125° C  
INSULATION RESISTANCE ----- 5000 MEGOHMS  
DWV AT SEA LEVEL ----- 250 VAC  
DWV AT 70,000 FT ALTITUDE --- 100 VAC  
CONTACT RESISTANCE ----- 30 mV DROP @ 1 A, 10 mA  
CONTACT RETENTION ----- 2 LBS AXIAL LOAD  
ENGAGEMENT FORCE ----- 5 oz MAX  
SEPARATION FORCE ----- 0.4 oz MIN

4. ADDITIONAL INFORMATION:  
FOR OTHER TERMINATIONS, CONTACT CRISTEK.

TOLERANCE: .XXX ±.005 .XX ±.01 ANGLE ±1°	TITLE <b>NANO METAL SHELL SINGLE ROW WITH LEADS</b>	SHT 2 OF 2	DWG. NO. <b>CMN1</b>	REV <b>D</b>
--	--	------------	-------------------------	-----------------