

## Type: CMD64

### ◆ Product Description

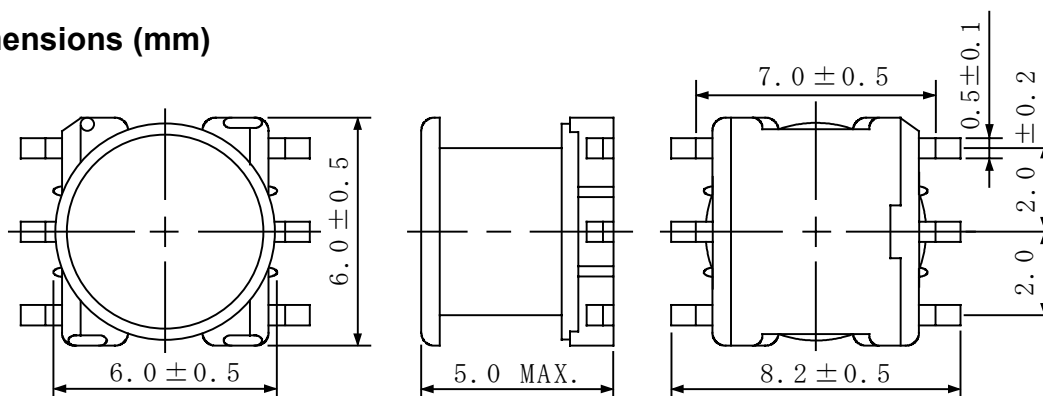
- 6.5×6.5mm Max.(L×W), 5.0mm Max. Height.
- In addition to the typical versions of parameters shown here, custom designs are available to meet your exact requirements.



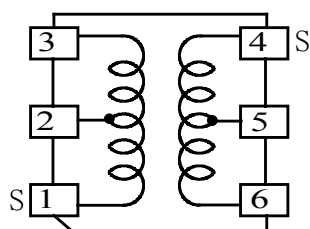
### ◆ Feature

- Magnetically unshielded construction.
- Ideally used in Digital video camera, also used as power choke.
- RoHS Compliance

### ◆ Dimensions (mm)

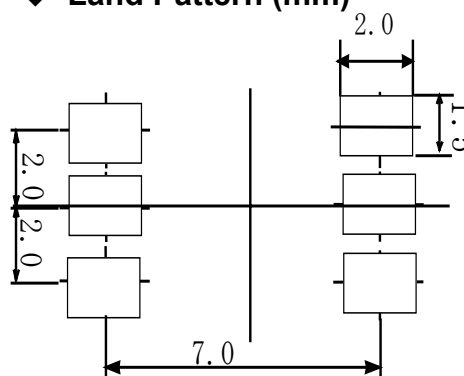


### ◆ Schematics (Bottom)



"S" is winding start.

### ◆ Land Pattern (mm)



### ◆ Specification

Sample No.	Inductance (1-3) 1kHz/1V	Inductance (4-6) 1kHz/1V	D.C.R. (1-3)
6326-T129	55μH±10%	77μH (REF.)	0.61Ω Max.