

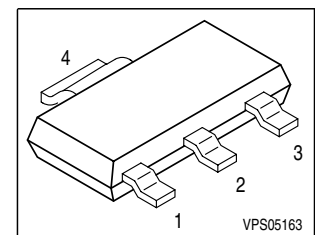


### Features

- Logic Level Input
- Input Protection (ESD)
- Thermal shutdown
- Green product (RoHS compliant)
- Overload protection
- Short circuit protection
- Overvoltage protection
- Current limitation
- Analog driving possible

### Product Summary

|                      |              |      |            |
|----------------------|--------------|------|------------|
| Drain source voltage | $V_{DS}$     | 42   | V          |
| On-state resistance  | $R_{DS(on)}$ | 100  | m $\Omega$ |
| Nominal load current | $I_{D(Nom)}$ | 2.17 | A          |
| Clamping energy      | $E_{AS}$     | 250  | mJ         |

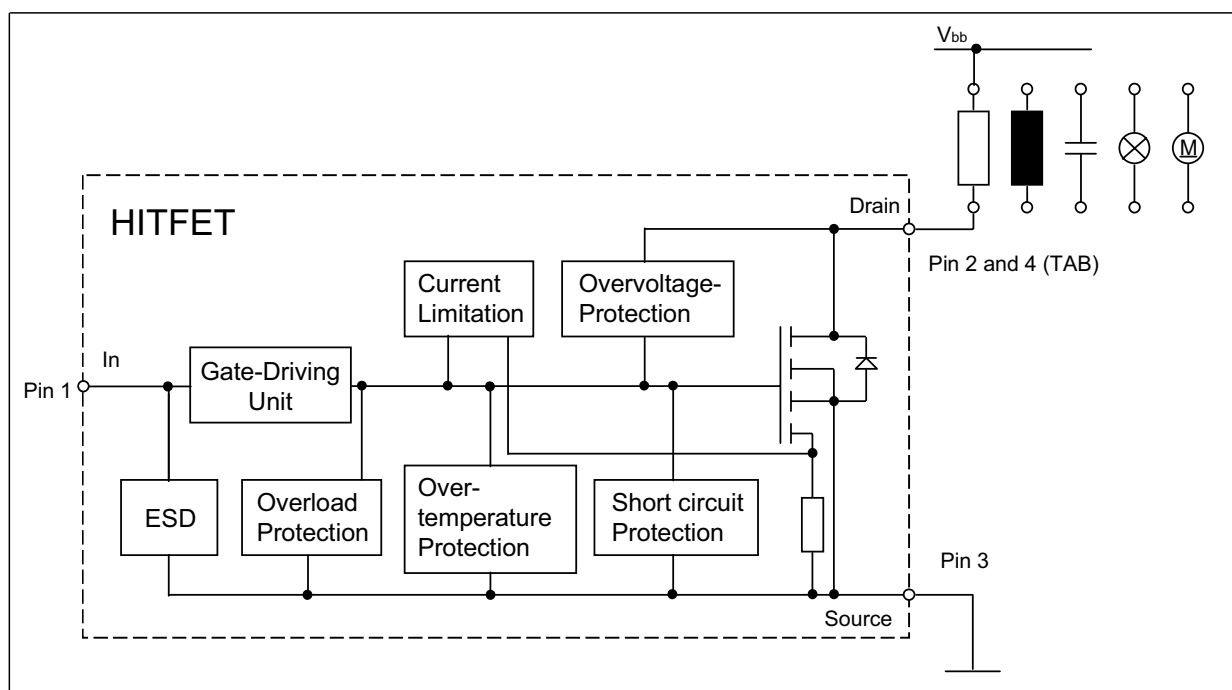


### Application

- All kinds of resistive, inductive and capacitive loads in switching or linear applications
- $\mu$ C compatible power switch for 12 V DC applications
- Replaces electromechanical relays and discrete circuits

### General Description

N channel vertical power FET in Smart SIPMOS<sup>®</sup> technology. Fully protected by embedded protection functions.



**Maximum Ratings at  $T_j = 25^\circ\text{C}$ , unless otherwise specified**

| Parameter  | Symbol       | Value                         | Unit             |
|--|--------------|-------------------------------|------------------|
| Drain source voltage   | $V_{DS}$     | 42                            | V                |
| Drain source voltage for short circuit protection<br>$T_j = -40\dots 150^\circ\text{C}$  | $V_{DS(SC)}$ | 20                            |                  |
| Continuous input current<br>$-0.2\text{V} \leq V_{IN} \leq 10\text{V}$<br>$V_{IN} < -0.2\text{V}$ or $V_{IN} > 10\text{V}$   | $I_{IN}$     | no limit<br>$ I_{IN}  \leq 2$ | mA               |
| Operating temperature  | $T_j$        | -40 ... +150                  | $^\circ\text{C}$ |
| Storage temperature  | $T_{stg}$    | -55 ... +150                  |                  |
| Power dissipation<br>$T_C = 85^\circ\text{C}$  | $P_{tot}$    | 3.8                           | W                |
| Unclamped single pulse inductive energy <sup>1)</sup>  | $E_{AS}$     | 250                           | mJ               |
| Load dump protection $V_{LoadDump}^{2)} = V_A + V_S$<br>$V_{IN} = 0$ and $10\text{V}$ , $t_d = 400\text{ms}$ , $R_I = 2\ \Omega$ ,<br>$R_L = 6\ \Omega$ , $V_A = 13.5\text{V}$ | $V_{LD}$     | 50                            | V                |
| <b>Electrostatic discharge voltage</b> (Human Body Model)<br>according to MIL STD 883D, method 3015.7 and<br>EOS/ESD assn. standard S5.1 - 1993                                | $V_{ESD}$    | 2                             | kV               |
|  |              |                               |                  |
|  |              |                               |                  |

**Thermal resistance**

|  |            |           |     |
|--|------------|-----------|-----|
| junction - ambient:<br>@ min. footprint<br>@ $6\text{cm}^2$ cooling area <sup>3)</sup> | $R_{thJA}$ | 125<br>72 | K/W |
| junction-soldering point:  | $R_{thJS}$ | 17        | K/W |

<sup>1</sup> Not tested, specified by design.

<sup>2</sup>  $V_{Loaddump}$  is setup without the DUT connected to the generator per ISO 7637-1 and DIN 40839

<sup>3</sup> Device on  $50\text{mm} \times 50\text{mm} \times 1.5\text{mm}$  epoxy PCB FR4 with  $6\text{cm}^2$  (one layer,  $70\mu\text{m}$  thick) copper area for drain connection. PCB mounted vertical without blown air.

**Electrical Characteristics**

| Parameter<br>at $T_j = 25^\circ\text{C}$ , unless otherwise specified  | Symbol       | Values     |           |            | Unit             |
|--|--------------|------------|-----------|------------|------------------|
|  |              | min.       | typ.      | max.       |                  |
| <b>Characteristics</b>   |              |            |           |            |                  |
| Drain source clamp voltage<br>$T_j = -40 \dots +150$ , $I_D = 10 \text{ mA}$   | $V_{DS(AZ)}$ | 42         | -         | 55         | V                |
| Off-state drain current $T_j = -40 \dots +150^\circ\text{C}$<br>$V_{DS} = 32 \text{ V}$ , $V_{IN} = 0 \text{ V}$   | $I_{DSS}$    | -          | 1.5       | 10         | $\mu\text{A}$    |
| Input threshold voltage<br>$I_D = 0.6 \text{ mA}$ , $T_j = 25^\circ\text{C}$<br>$I_D = 0.6 \text{ mA}$ , $T_j = 150^\circ\text{C}$   | $V_{IN(th)}$ | 1.3<br>0.8 | 1.7<br>-  | 2.2<br>-   | V                |
| On state input current   | $I_{IN(on)}$ | -          | 10        | 30         | $\mu\text{A}$    |
| On-state resistance<br>$V_{IN} = 5 \text{ V}$ , $I_D = 2.17 \text{ A}$ , $T_j = 25^\circ\text{C}$<br>$V_{IN} = 5 \text{ V}$ , $I_D = 2.17 \text{ A}$ , $T_j = 150^\circ\text{C}$   | $R_{DS(on)}$ | -<br>-     | 90<br>160 | 120<br>240 | $\text{m}\Omega$ |
| On-state resistance<br>$V_{IN} = 10 \text{ V}$ , $I_D = 2.17 \text{ A}$ , $T_j = 25^\circ\text{C}$<br>$V_{IN} = 10 \text{ V}$ , $I_D = 2.17 \text{ A}$ , $T_j = 150^\circ\text{C}$ | $R_{DS(on)}$ | -<br>-     | 70<br>130 | 100<br>200 |                  |
| Nominal load current<br>$V_{DS} = 0.5 \text{ V}$ , $T_j < 150^\circ\text{C}$ , $V_{IN} = 10 \text{ V}$ , $T_A = 85^\circ\text{C}$  | $I_{D(Nom)}$ | 2.17       | -         | -          | A                |
| Current limit (active if $V_{DS} > 2.5 \text{ V}$ ) <sup>1)</sup><br>$V_{IN} = 10 \text{ V}$ , $V_{DS} = 12 \text{ V}$ , $t_m = 200 \mu\text{s}$                                   | $I_{D(lim)}$ | 10         | 15        | 20         |                  |

<sup>1)</sup> Device switched on into existing short circuit (see diagram Determination of  $I_{D(lim)}$ ). If the device is in on condition and a short circuit occurs, these values might be exceeded for max. 50  $\mu\text{s}$ .

**Electrical Characteristics**

| Parameter<br>at $T_j = 25^\circ\text{C}$ , unless otherwise specified | Symbol | Values |      |      | Unit |
|---|--------|--------|------|------|------|
|   |        | min.   | typ. | max. |      |

**Dynamic Characteristics**

|   |                    |   |     |     |                        |
|---|--------------------|---|-----|-----|------------------------|
| Turn-on time $V_{IN}$ to 90% $I_D$ :<br>$R_L = 4.7 \Omega$ , $V_{IN} = 0$ to 10 V, $V_{bb} = 12$ V  | $t_{on}$           | - | 40  | 100 | $\mu\text{s}$          |
| Turn-off time $V_{IN}$ to 10% $I_D$ :<br>$R_L = 4.7 \Omega$ , $V_{IN} = 10$ to 0 V, $V_{bb} = 12$ V | $t_{off}$          | - | 70  | 100 |                        |
| Slew rate on 70 to 50% $V_{bb}$ :<br>$R_L = 4.7 \Omega$ , $V_{IN} = 0$ to 10 V, $V_{bb} = 12$ V     | $-dV_{DS}/dt_{on}$ | - | 0.4 | 1.5 | $\text{V}/\mu\text{s}$ |
| Slew rate off 50 to 70% $V_{bb}$ :<br>$R_L = 4.7 \Omega$ , $V_{IN} = 10$ to 0 V, $V_{bb} = 12$ V    | $dV_{DS}/dt_{off}$ | - | 0.6 | 1.5 |                        |

**Protection Functions<sup>1)</sup>**

|   |                |     |     |     |                  |
|---|----------------|-----|-----|-----|------------------|
| Thermal overload trip temperature   | $T_{jt}$       | 150 | 175 | -   | $^\circ\text{C}$ |
| Input current protection mode   | $I_{IN(Prot)}$ | 60  | 120 | 300 | $\mu\text{A}$    |
| Input current protection mode<br>$T_j = 150^\circ\text{C}$  | $I_{IN(Prot)}$ | -   | 100 | 300 |                  |
| Unclamped single pulse inductive energy <sup>2)</sup><br>$I_D = 2.17$ A, $T_j = 25^\circ\text{C}$ , $V_{bb} = 12$ V | $E_{AS}$       | 250 | -   | -   | mJ               |

**Inverse Diode**

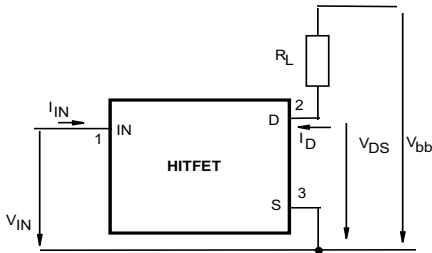
|   |          |   |   |   |   |
|---|----------|---|---|---|---|
| Inverse diode forward voltage<br>$I_F = 10.9$ A, $t_m = 250 \mu\text{s}$ , $V_{IN} = 0$ V,<br>$t_P = 300 \mu\text{s}$ | $V_{SD}$ | - | 1 | - | V |
|---|----------|---|---|---|---|

<sup>1)</sup>Integrated protection functions are designed to prevent IC destruction under fault conditions described in the data sheet. Fault conditions are considered as "outside" normal operating range. Protection functions are not designed for continuous repetitive operation.

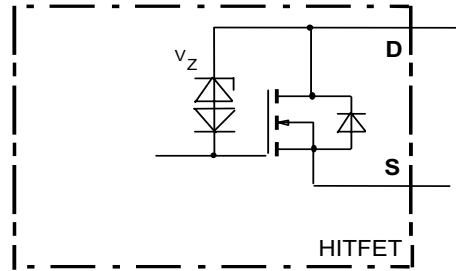
<sup>2)</sup> Not tested, specified by design.

## Block diagram

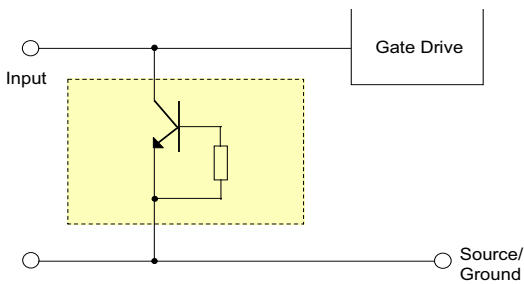
### Terms



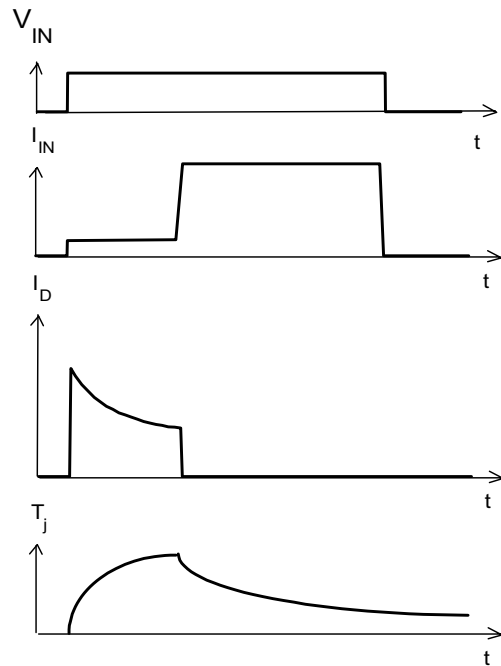
### Inductive and overvoltage output clamp



### Input circuit (ESD protection)



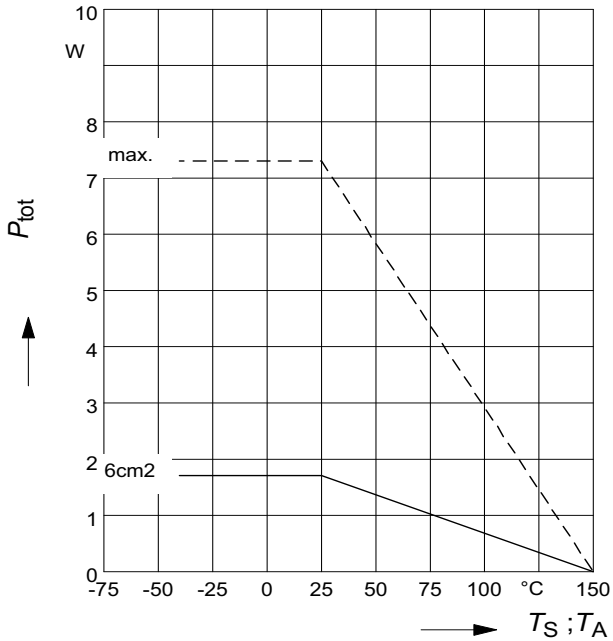
### Short circuit behaviour



**1 Maximum allowable power dissipation**

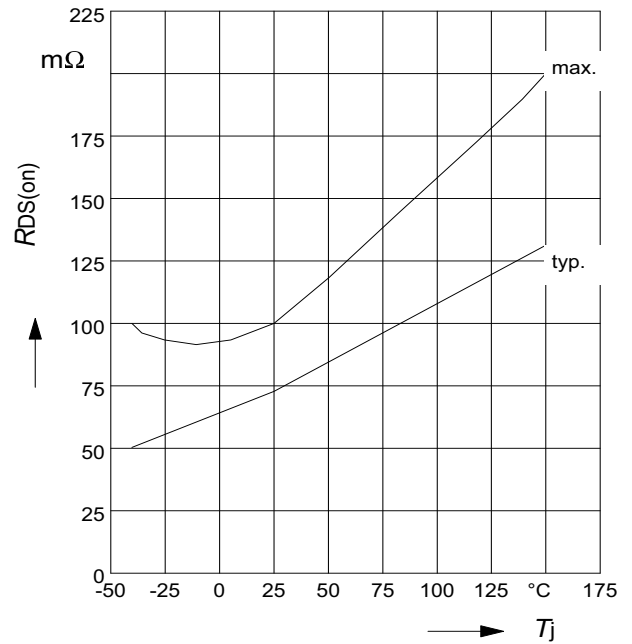
$P_{tot} = f(T_S)$  resp.

$P_{tot} = f(T_A) @ R_{thJA}=72 \text{ K/W}$



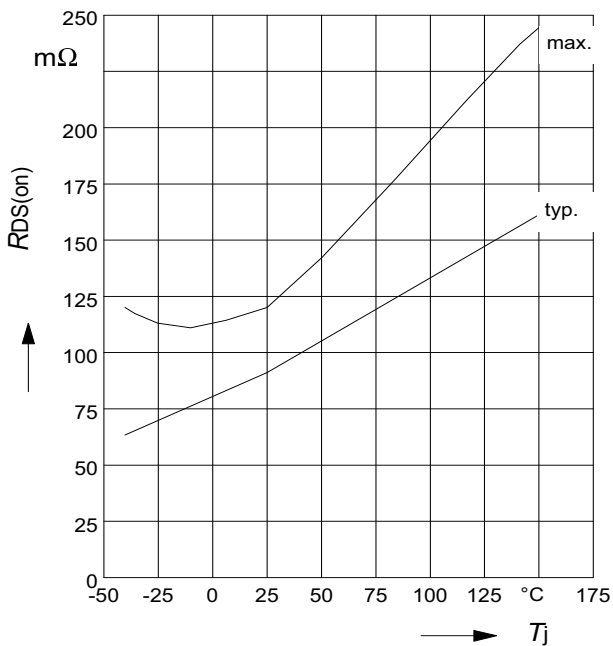
**2 On-state resistance**

$R_{ON} = f(T_j); I_D=2.17A; V_{IN}=10V$



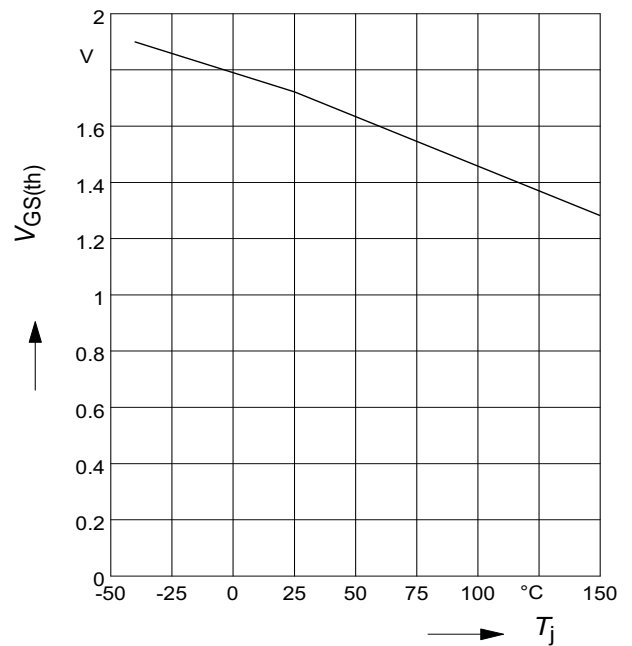
**3 On-state resistance**

$R_{ON} = f(T_j); I_D= 2.17A; V_{IN}=5V$



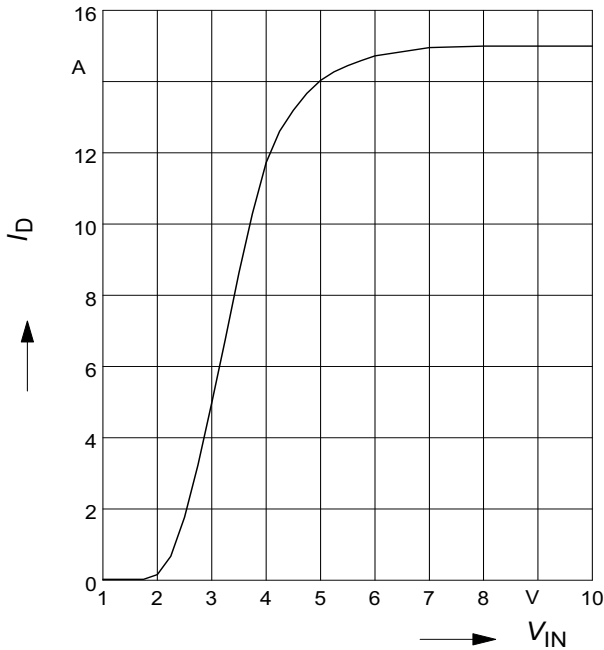
**4 Typ. input threshold voltage**

$V_{IN(th)} = f(T_j); I_D = 0.3 \text{ mA}; V_{DS} = 12V$



**5 Typ. transfer characteristics**

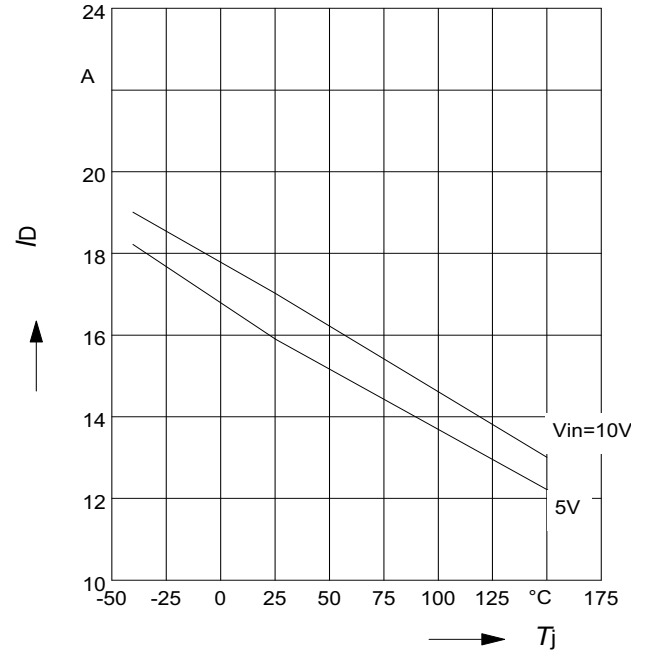
$I_D = f(V_{IN}); V_{DS} = 12V; T_{Jstart} = 25^\circ C$



**6 Typ. short circuit current**

$I_{D(lim)} = f(T_j); V_{DS} = 12V$

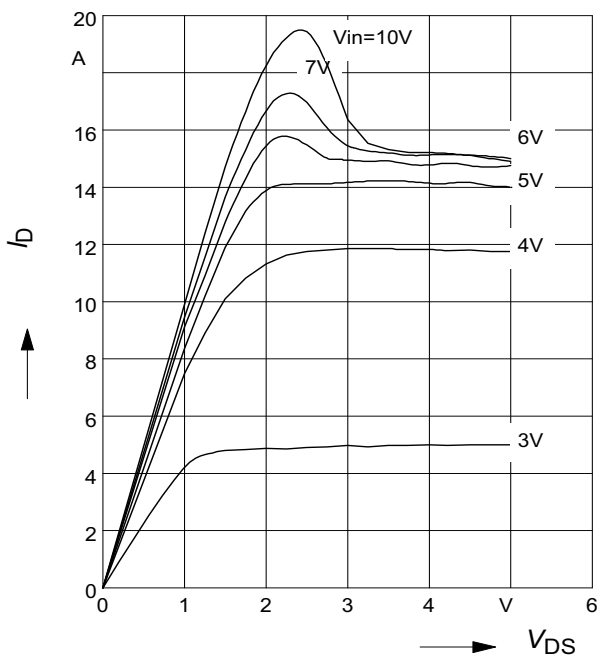
Parameter:  $V_{IN}$



**7 Typ. output characteristics**

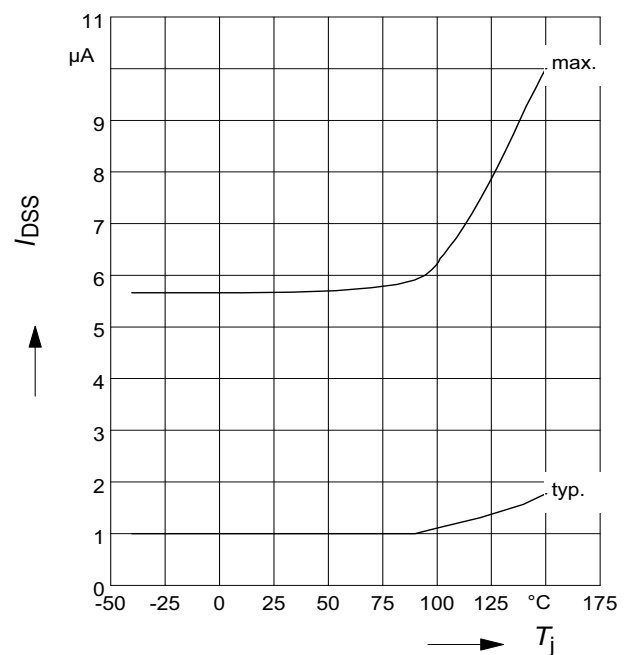
$I_D = f(V_{DS}); T_{Jstart} = 25^\circ C$

Parameter:  $V_{IN}$



**8 Typ. off-state drain current**

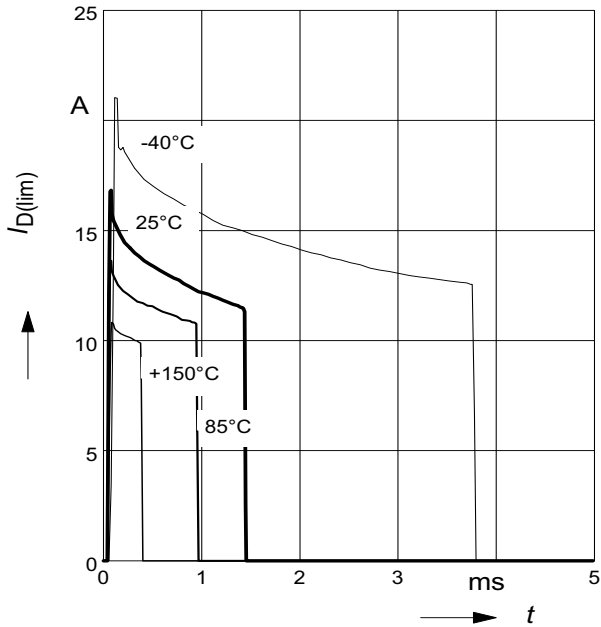
$I_{DSS} = f(T_j)$



**9 Typ. overload current**

$I_{D(lim)} = f(t)$ ,  $V_{bb}=12\text{ V}$ , no heatsink

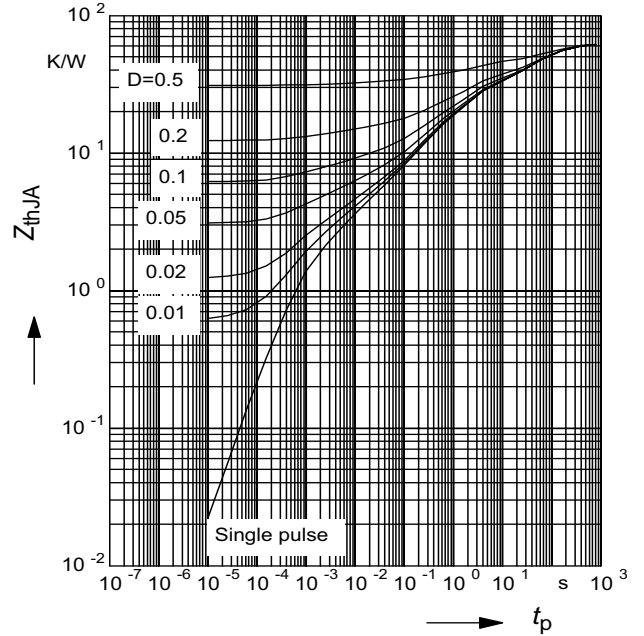
Parameter:  $T_{Jstart}$



**10 Typ. transient thermal impedance**

$Z_{thJA}=f(t_p)$  @ 6 cm<sup>2</sup> cooling area

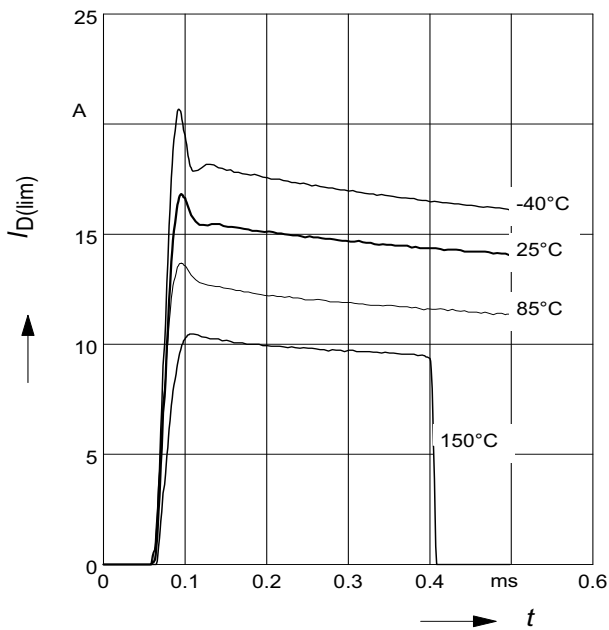
Parameter:  $D=t_p/T$



**11 Determination of  $I_{D(lim)}$**

$I_{D(lim)} = f(t)$ ;  $t_m = 200\mu\text{s}$

Parameter:  $T_{Jstart}$





# 1 Package Outlines

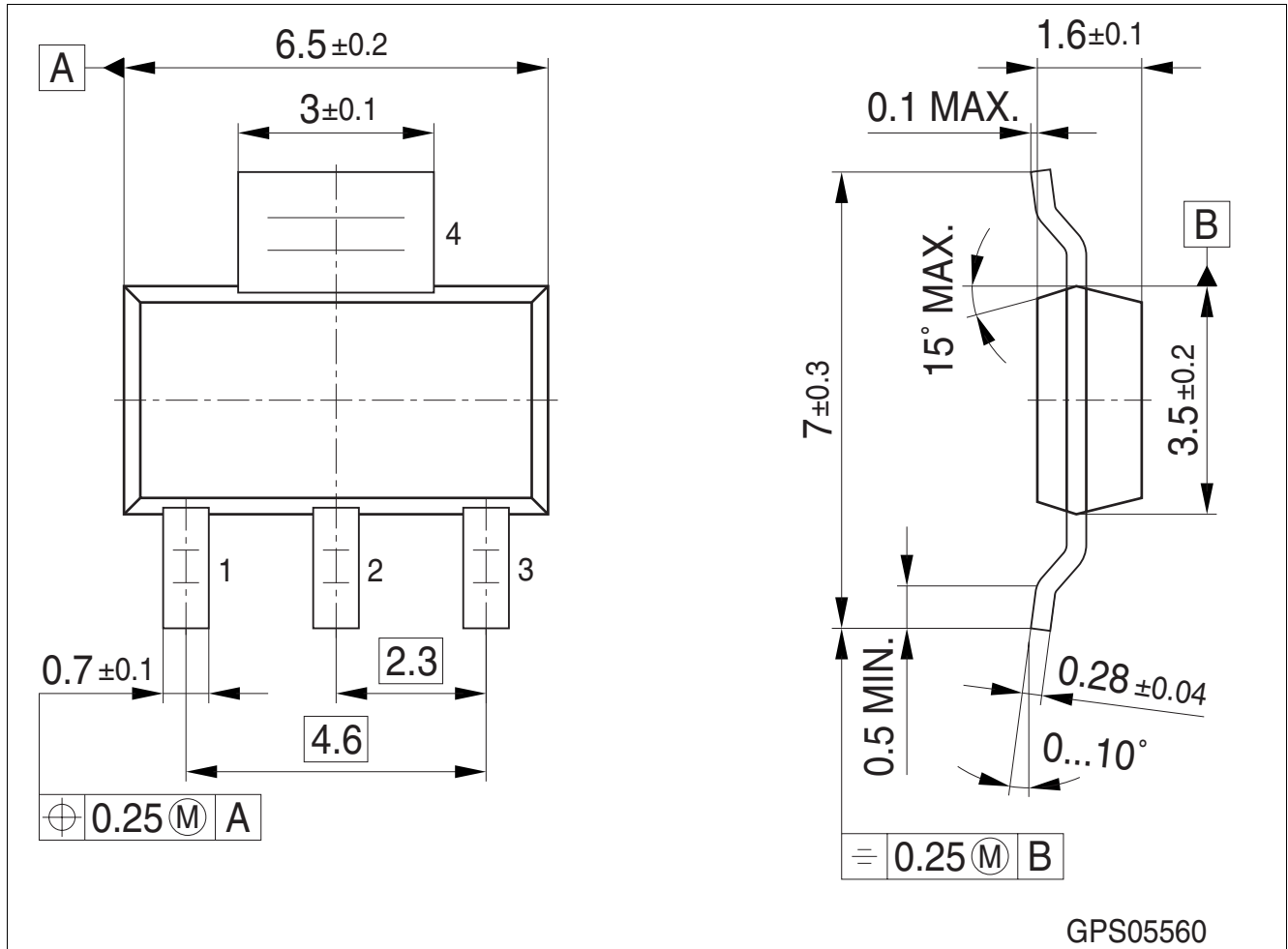


Figure 1 PG-SOT223-4 (Plastic Green Small Outline Transistor Package)

### Green Product (RoHS compliant)

To meet the world-wide customer requirements for environmentally friendly products and to be compliant with government regulations the device is available as a green product. Green products are RoHS-Compliant (i.e Pb-free finish on leads and suitable for Pb-free soldering according to IPC/JEDEC J-STD-020).

Please specify the package needed (e.g. green package) when placing an order

You can find all of our packages, sorts of packing and others in our Infineon Internet Page "Products": <http://www.infineon.com/products>.

Dimensions in mm

## 2 Revision History

| Version  | Date       | Changes   |
|----------|------------|---|
| Rev. 1.3 | 2008-04-14 | Package information updated to SOT223-4   |
| Rev. 1.2 | 2007-03-28 | released automotive green version<br>Package parameter (humidity and climatic) removed in Maximum ratings<br>AEC icon added<br>RoHS icon added<br>Green product (RoHS-compliant) added to the feature list<br>Package information updated to green<br>Green explanation added |
| Rev. 1.1 | 2004-02-02 | released production version   |
|          |            |   |
|          |            |   |
|          |            |   |
|          |            |   |
|          |            |   |
|          |            |   |
|          |            |   |
|          |            |   |
|          |            |   |
|          |            |   |
|          |            |   |

**Edition 2008-04-14**

**Published by  
Infineon Technologies AG  
81726 Munich, Germany**

**© Infineon Technologies AG 2008.  
All Rights Reserved.**

### **Legal Disclaimer**

The information given in this document shall in no event be regarded as a guarantee of conditions or characteristics ("Beschaffenhheitsgarantie"). With respect to any examples or hints given herein, any typical values stated herein and/or any information regarding the application of the device, Infineon Technologies hereby disclaims any and all warranties and liabilities of any kind, including without limitation warranties of non-infringement of intellectual property rights of any third party.

### **Information**

For further information on technology, delivery terms and conditions and prices please contact your nearest Infineon Technologies Office ([www.infineon.com](http://www.infineon.com)).

### **Warnings**

Due to technical requirements components may contain dangerous substances. For information on the types in question please contact your nearest Infineon Technologies Office.

Infineon Technologies Components may only be used in life-support devices or systems with the express written approval of Infineon Technologies, if a failure of such components can reasonably be expected to cause the failure of that life-support device or system, or to affect the safety or effectiveness of that device or system. Life support devices or systems are intended to be implanted in the human body, or to support and/or maintain and sustain and/or protect human life. If they fail, it is reasonable to assume that the health of the user or other persons may be endangered.