

**IPS Alpha Technology, Ltd.**

AKS Bldg.,3, Kandaneribei-cho,

Chiyoda-ku ,Tokyo 101-0022,japan

Telephone : +81-3-4554-5000

Fax : +81-3-4554-5299

Date : May 30,2007Warranty for IPS Alpha TFT Liquid Crystal Display Module

This is to clarify the warranty condition for IPS Alpha TFT Liquid Crystal Display Module shown in the part name below.

Part Name : BM080A002A

Period : 3 months from manufacturing date

Object : Initial functional defectives (no-display, missing-block &amp; missing-line)

Remarks : Attached "Cosmetic Definition" is for your reference only and is not a subject to be guaranteed.

Shenzhen Lanyuan Industrial Deveoement Co., Ltd

IPS Alpha Technology, Ltd.

Sales Department Sales Group 2

Business Operation Division

Date : May 30, 2007

# TECHNICAL DATA

## BM080A002A

### CONTENTS

No.	Item	Page
-	COVER	1-1/1
-	DESCRIPTION	2-1/1
1	ABSOLUTE MAXIMUM RATINGS	3-1/1
2	INITIAL OPTICAL CHARACTERISTICS	4-1/2 - 2/2
3	ELECTRICAL CHARACTERISTICS	5-1/1
4	BLOCK DIAGRAM	6-1/1
5	INTERFACE PIN ASSIGNMENT	7-1/6 - 6/6
6	INTERFACE TIMING	8-1/3 - 3/3
7	DIMENSIONAL OUTLINE	9-1/2 - 2/2
8	DESIGNATION OF LOT MARK	10-1/1
9	PRECAUTION	11-1/3-3/3

## DESCRIPTION

The following specifications are applied to the following IPS-Pro module.

Note : Inverter for back light unit is built in this module.

Product Name : BM080A002A

### General Specifications

Effective Display Area	: (H)697.685×(V)392.256	(mm)
Number of Pixels	: (H)1,366×(V)768	(pixels)
Pixel Pitch	: (H)0.51075×(V)0.51075	(mm)
Color Pixel Arrangement	: R+G+B Vertical Stripe	
Display Mode	: Transmissive Mode Normally Black Mode	
Top Polarizer Type	: Anti-Glare	
Number of Colors	: 16,777,216	(colors)
Viewing Angle Range	: Super Wide Version (Horizontal & Vertical : 170° , CR≥10)	
Input Signal	: 1-channel LVDS (LVDS:Low Voltage Differential Signaling)	
Back Light	: 16 pcs. of EEFL	
External Dimensions	: (H)760.0 x (V)450.0 x (t)49.0 max	(mm)
Weight	: Typ 7,000	(g)

BM080A002A

Date

May 30, 2007

Sheet  
No.

BM-ASIA 058 - 2

Page

2-1/1

## 1. ABSOLUTE MAXIMUM RATINGS

### 1.1 Environmental Absolute Maximum Ratings

ITEM	Operating		Storage		Unit	Note
	Min.	Max.	Min.	Max.		
Temperature	0	50	-20	60	°C	1),5)
Humidity	2)		2)		%RH	1)
Vibration	-	4.9(0.5G)	-	9.8(1.0G)	m/s <sup>2</sup>	3)
Shock	-	29.4(3G)	-	294(30G)	m/s <sup>2</sup>	4)
Corrosive Gas	Not Acceptable		Not Acceptable		-	

Note 1) Temperature and Humidity should be applied to the glass surface of a Super-TFT module, not to the system installed with a module.

The temperature at the center of rear surface should be less than 70°C on the condition of operating. The brightness of a EEFL tends to drop at low temperature. Besides, the life-time becomes shorter at low temperature.

2)  $T_a \leq 40^\circ\text{C}$  ······Relative humidity should be less than 85%RH max. Dew is prohibited.

$T_a > 40^\circ\text{C}$  ······Relative humidity should be lower than the moisture of the 85%RH at 40°C.

3) Frequency of the vibration is between 15Hz and 100Hz. (Remove the resonance point)

4) Pulse width of the shock is 10 ms.

5) Long operation under low temperature may cause some portion of display area to be reddish for several minutes after turning on the product.

However, it does not affect the characteristics and reliability of the product.

### 1.2 Electrical Absolute Maximum Ratings

#### (1) TFT Module

$V_{SS} = 0\text{ V}$

ITEM	SYMBOL	Min.	Max.	Unit	Note
Power Supply Voltage	VDD	0	13.2	V	
Input Voltage for logic	V1	-0.3	3.6	V	1)
Electrostatic Durability	VESD0	±100		V	2),3)
	VESD1	±8		kV	2),4)

Note 1) It is applied to pixel data signal and clock signal.

2) Discharge Coefficient : 200pF-250Ω, Environmental : 25°C-70%RH

3) It is applied to I/F connector pins.

4) It is applied to the surface of a metallic bezel and a LCD panel.

#### (2) Back-light Inverter

$V_{SS} = 0\text{ V}$

ITEM	SYMBOL	Min.	Max.	Unit	Note
Input Voltage	Vin	0	28.0	V	
ON/OFF Control Input Voltage	ON/OFF	0	6.0	V	
Brightness Control Voltage	BRT	0	6.0	V	

BM080A002A

Date

May 30, 2007

Sheet  
No.

BM-ASIA 058 - 3

Page

3-1/1

## 2. INITIAL OPTICAL CHARACTERISTICS

The following optical characteristics are measured under stable conditions. It takes about 30 minutes to reach stable conditions. The measuring point is the center of display area unless otherwise noted.

The optical characteristics should be measured in a dark room or equivalent state.

Measuring equipment : CS-1000A, or equivalent

Ambient Temperature =25°C、VDD=12.0V、f V=60Hz、

Vin=24V、BRT=3.3V

ITEM	SYMBOL	CONDITION	Min.	Typ.	Max.	UNIT	NOTE	
Contrast Ratio	C R		500	850	-	-	2)	
Response Time	Rise	ton	-	8	20	ms	3)	
	Fall	toff	-	6	20	ms	3)	
Brightness of white	Bwh		400	450	-	cd/m <sup>2</sup>		
Brightness uniformity	Buni		-	-	30	%	4)	
Color Chromaticity (CIE)	Red	$\chi$	$\theta = 0^\circ$ 1)	0.62	0.65	0.68	-	【Gray scale =255】
		y		0.30	0.33	0.36		
	Green	$\chi$		0.27	0.30	0.33		
		y		0.60	0.63	0.66		
	Blue	$\chi$		0.12	0.15	0.18		
		y		0.04	0.07	0.10		
	White	$\chi$		0.243	0.273	0.303		
		y		0.245	0.275	0.305		
Variation of Color Position (CIE)	Red	$\Delta \chi$	$\theta = +50^\circ$ $\phi = 0^\circ, 90^\circ$ 180°, 270° 1)	-	-	0.04	-	5) 【Gray scale =255】
		$\Delta y$		-	-	0.04		
	Green	$\Delta \chi$		-	-	0.04		
		$\Delta y$		-	-	0.04		
	Blue	$\Delta \chi$		-	-	0.04		
		$\Delta y$		-	-	0.04		
	White	$\Delta \chi$		-	-	0.04		
		$\Delta y$		-	-	0.04		
Contrast Ratio at 85°	CR85		10	-	-	-	Estimated value	

BM080A002A

Date

May 30, 2007

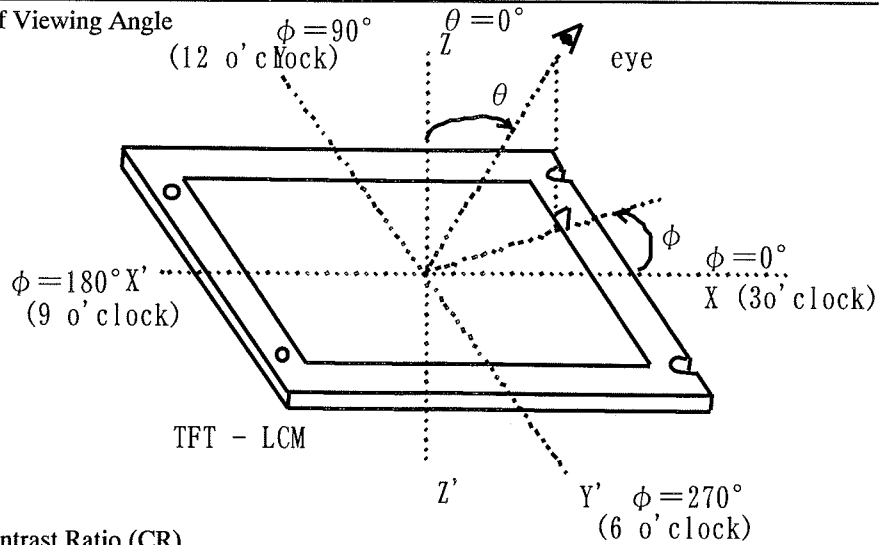
Sheet No.

BM-ASIA 058 - 4

Page

4-1/2

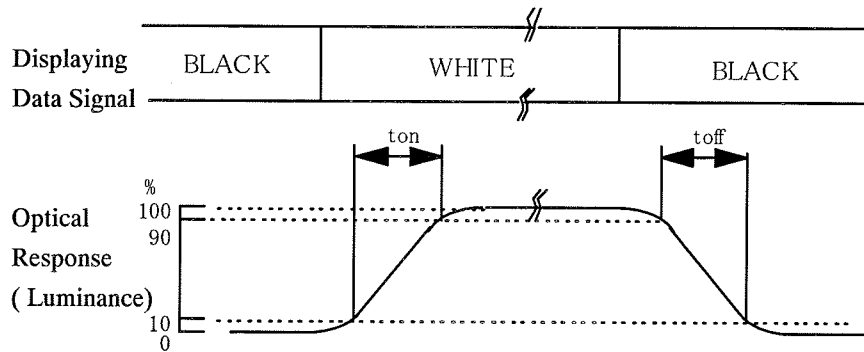
Note 1) Definition of Viewing Angle



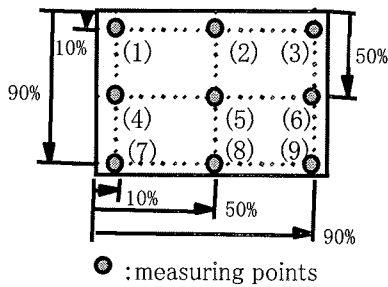
2) Definition of Contrast Ratio (CR)

$$CR = \frac{\text{(Luminance at displaying WHITE)}}{\text{(Luminance at displaying BLACK)}}$$

3) Definition of Response Time



4) Definition of Brightness Uniformity Display pattern is white (255 level). The brightness



uniformity is defined as the following equation. Brightness at each point is measured, and average, maximum and minimum brightness is calculated.

$$B_{uni} = \frac{|B_{max \text{ or } B_{min}} - B_{ave}|}{B_{ave}} \times 100$$

where,  $B_{max}$  = Maximum brightness

$B_{min}$  = Minimum brightness

$$B_{ave} = \text{Average brightness} = \frac{\sum_{k=1}^9 (B(k))}{9}$$

5) Variation of color position on CIE is defined as difference between colors at  $\theta = 0^\circ$  and

at  $\theta = 50^\circ$  &  $\phi = 0^\circ, 90^\circ, 180^\circ, 270^\circ$ .

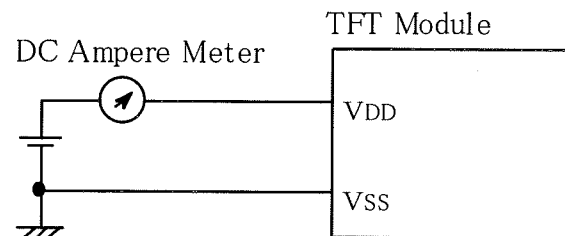
### 3. ELECTRICAL CHARACTERISTICS

#### 3.1 TFT-LCD Module

 $T_a=25^{\circ}\text{C}$ ,  $V_{SS}=0\text{V}$ 

ITEM	SYSTEM	Min.	Typ	Max	单位	備考
Power supply Voltage	VDD	11.4	12.0	12.6	V	
Power supply Current	I <sub>DD</sub>	-	0.5	0.6	A	1),2)
Ripple voltage of power Supply	V <sub>DDR</sub>	-	-	350	mV	

Note 1)  $f_V=60.0\text{Hz}$ ,  $f_{\text{CLK}}=82\text{MHz}$ ,  $V_{\text{DD}}=12.0\text{V}$ , and Display pattern is white.



2) Current fuse is built in a module. Current capacity of power supply for VDD should be larger than 4A, so that the fuse can be opened at the trouble of electrical circuit of module.

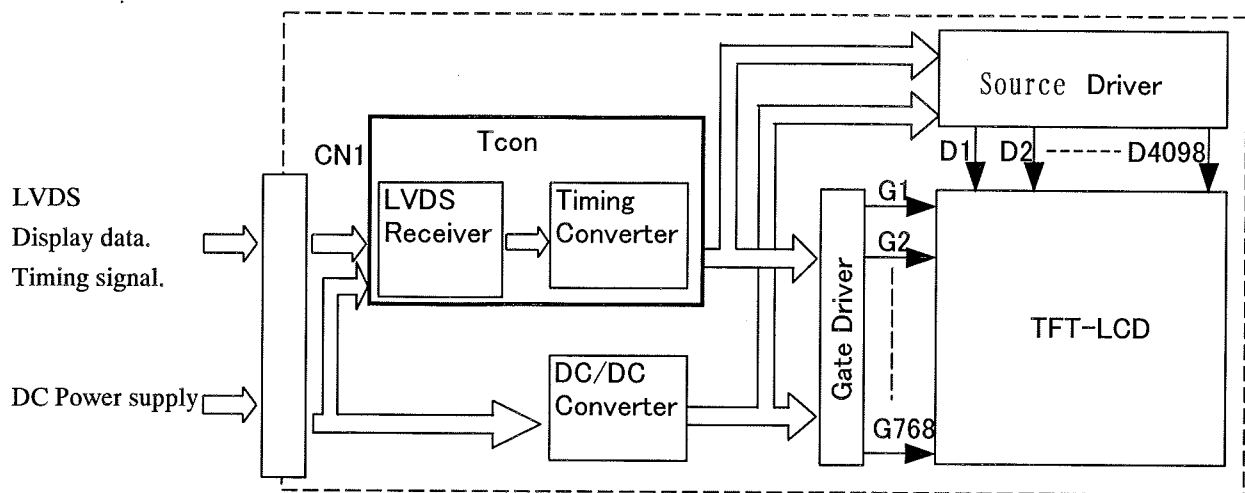
#### 3.2 Back Light

ITEM		Symbol	Min.	Typ.	Max.	Unit	Notes
Input Voltage		VBL	21.6	24.0	26.4	V	
Input Current		IBL	-	4.0	4.8	A	VBL=24V, BRT=3.3V,3)
ON/OFF Control Voltage	ON	ON/OFF	2.2	3.3	5.5	V	
	OFF		0	-	0.8	V	
brightness Control Input Voltage	Min. Brightness	BRT	-	0	-	V	
	Max. Brightness		3.0	-	3.3	V	
PWM Duty	Min. Brightness	on-Duty	-	20	-	%	BRT=0V
	Max. Brightness		-	-	100		BRT=3.3V

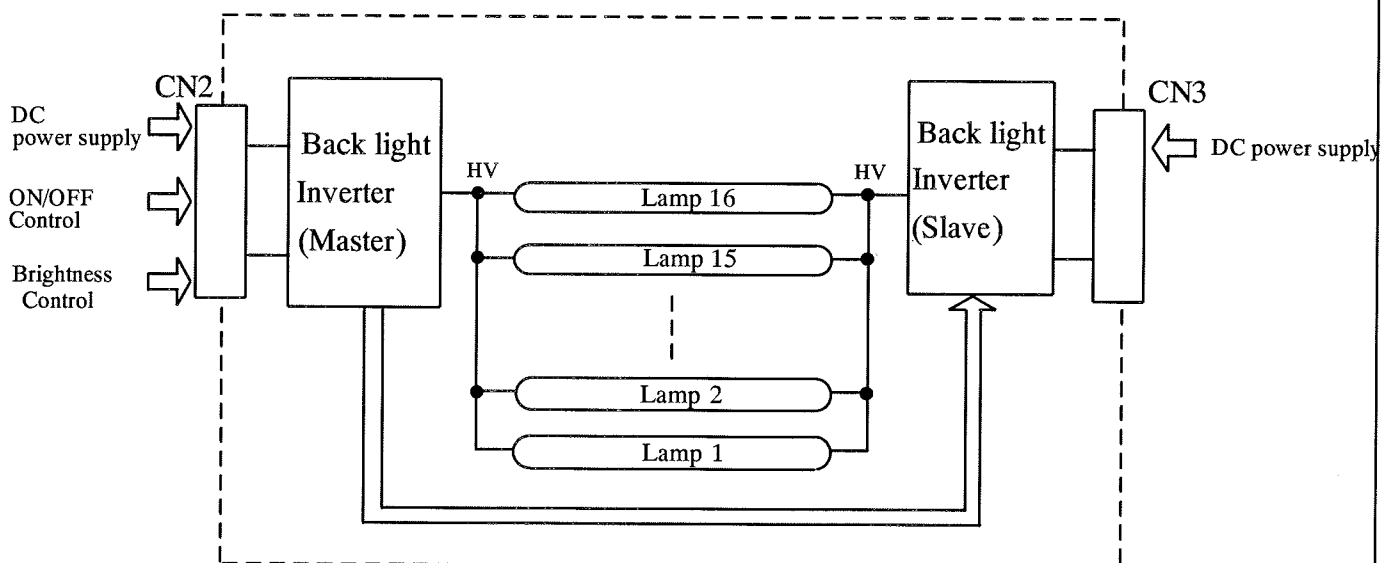
Note 3) This characteristics should be applied putting on the lamp about 60 minutes later with ambient temperature. ( $T_a=25^{\circ}\text{C}\pm 2^{\circ}\text{C}$ )

#### 4. BLOCK DIAGRAM

##### (1) Super-TFT Module



##### (2) Back light unit





**5. INTERFACE PIN ASSIGNMENT****5.1 TFT-LCD MODULE**

CN1:JAE FI-X30SSL-HF

(Matching connector : JAE FI-X30C2L)

Pin No.	SYMBOL	Description	Note
1	VDD	Power Supply (typ.+12V)	1)
2	VDD		
3	VDD		
4	VDD		
5	VSS	GND (0V)	2)
6	VSS		
7	VSS		
8	VSS		
9	IC	Internally Connected, Keep Open	
10	IC		
11	VSS	GND (0V)	
12	Rx0-	Pixel Data	3)
13	Rx0+		
14	VSS	GND (0V)	2)
15	Rx1-	Pixel Data	3)
16	Rx1+		
17	VSS	GND (0V)	2)
18	Rx2-	Pixel Data	3)
19	Rx2+		
20	VSS	GND (0V)	2)
21	CLK-	Pixel Data	3)
22	CLK+		
23	VSS	GND (0V)	2)
24	Rx3-	Pixel Data	3)
25	Rx3+		
26	VSS	GND (0V)	2)
27	IC	Internally Connected, Keep Open	
28	IC		
29	IC		
30	IC		

- Notes
- 1) All VDD pins shall be connected to +12.0V(Typ.).
  - 2) All VSS pins shall be grounded. Metal bezel is internally connected to VSS.
  - 3) Rx n+ and Rx n- (n=0,1,2,3) should be wired by twist-pairs or side-by-side FPC patterns, respectively.

BM080A002A

Date

May 30, 2007

Sheet  
No.

BM-ASIA 058 - 7

Page

7-1/6

**5.2 BACK-LIGHT UNIT**

CN2,CN3:JST S12B-PH-SM3-TF(LF)

(Matching connecor : JST PHR-12)

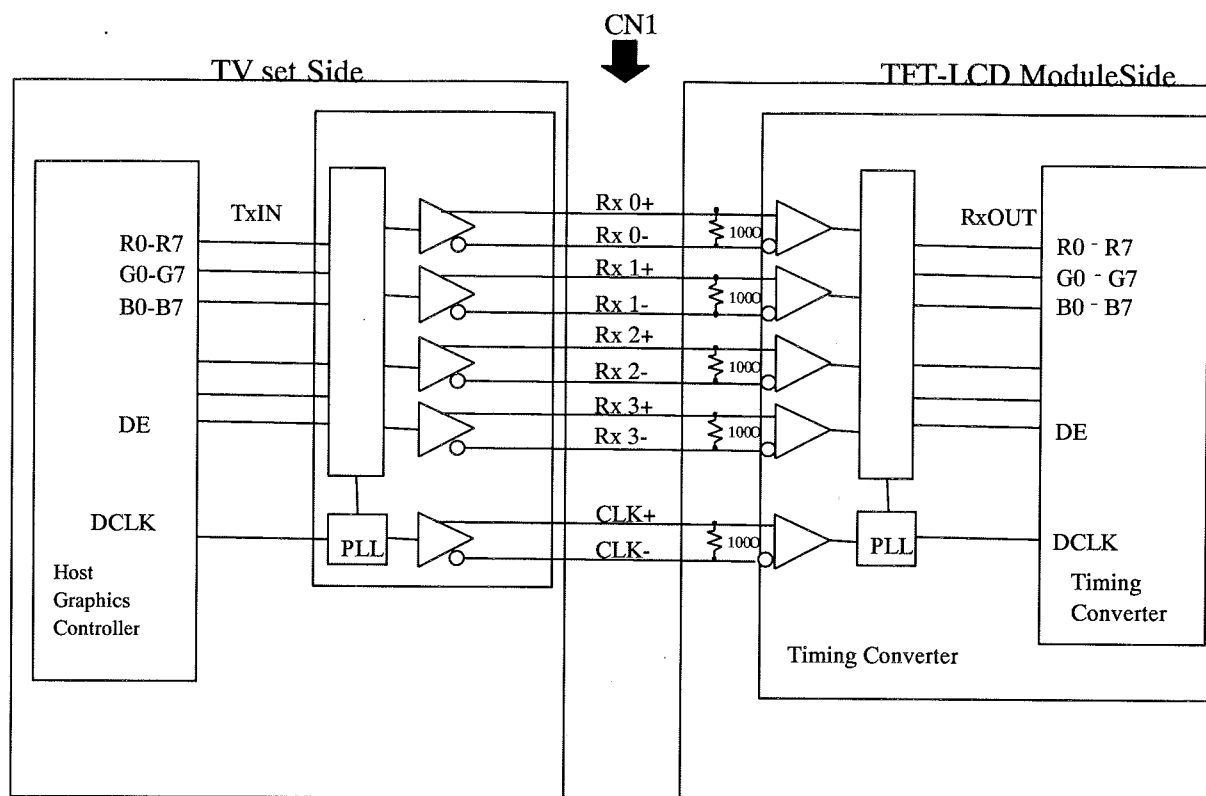
Pin No.	SYMBOL		Description	Note
	Master(CN2)	Slave(CN3)		
1	VIN		Power Supply (typ.+24.0V)	1)
2	VIN			
3	VIN			
4	VIN			
5	VIN			
6	VSS		GND(0V)	2)
7	VSS			
8	VSS			
9	VSS			
10	VSS			
11	BRT	NC	Brightness controll of Back Light	3)
12	ON/OFF	NC	High:Lamp ON, Low:Lamp OFF	3)

Notes 1) All VIN pins shall be connected to +24.0V(Typ.).

2) All VSS pins shall be grounded. Metal bezel is internally connected to VSS.

3)Pin 11 and 12 of Slave (CN3) are ignored.

## 5.3 BLOCK DIAGRAM OF INTERFACE



R0~R7 : Pixel R Data (7; MSB, 0; LSB)  
 G0~G7 : Pixel G Data (7; MSB, 0; LSB)  
 B0~B7 : Pixel B Data (7; MSB, 0; LSB)  
 DE : Data Enable

- Notes
- 1) The system must have the transmitter to drive the module.
  - 2) LVDS cable impedance shall be 50 ohms per signal line or about 100 ohms per twist-pair line when it is used differentially.

## 5.4 LVDS INTERFACE

	SIGNAL	TRANSMITTER THC63LVDM83A		INTERFACE CONNECTOR		RECEIVER		TFT CONTROL		
		PIN	INPUT	TV Set	TFT-LCD	PIN	OUTPUT	INPUT		
24bit	R2	51	Tx IN0	TA OUT0+	Rx 0+	27	Rx OUT0	R2		
	R3	52	Tx IN1			29	Rx OUT1	R3		
	R4	54	Tx IN2			30	Rx OUT2	R4		
	R5	55	Tx IN3			32	Rx OUT3	R5		
	R6	56	Tx IN4			33	Rx OUT4	R6		
	R7	3	Tx IN6			TA OUT0-	Rx 0-	35	Rx OUT6	R7
	G2	4	Tx IN7			37	Rx OUT7	G2		
	G3	6	Tx IN8	TA OUT1+	Rx 1+	38	Rx OUT8	G3		
	G4	7	Tx IN9			39	Rx OUT9	G4		
	G5	11	Tx IN12			43	Rx OUT12	G5		
	G6	12	Tx IN13			45	Rx OUT13	G6		
	G7	14	Tx IN14			46	Rx OUT14	G7		
	B2	15	Tx IN15			TA OUT1-	Rx 1-	47	Rx OUT15	B2
	B3	19	Tx IN18			51	Rx OUT18	B3		
	B4	20	Tx IN19	TA OUT2+	Rx 2+	53	Rx OUT19	B4		
	B5	22	Tx IN20			54	Rx OUT20	B5		
	B6	23	Tx IN21			55	Rx OUT21	B6		
	B7	24	Tx IN22			1	Rx OUT22	B7		
	HSYNC	27	Tx IN24			3	Rx OUT24	not connect		
	VSYNC	28	Tx IN25			TA OUT2-	Rx 2-	5	Rx OUT25	not connect
	DE	30	Tx IN26			6	Rx OUT26	DE		
	R0	50	Tx IN27	TA OUT3+	Rx 3+	7	Rx OUT27	R0		
	R1	2	Tx IN5			34	Rx OUT5	R1		
G0	8	Tx IN10	41			Rx OUT10	G0			
G1	10	Tx IN11	42			Rx OUT11	G1			
B0	16	Tx IN16	49			Rx OUT16	B0			
B1	18	Tx IN17	TA OUT3-			Rx 3-	50	Rx OUT17	B1	
RSVD 1)	25	Tx IN23	2			Rx OUT23	not connect			
	DCLK	31	TxCLK IN	TxCLK OUT+	RxCLK IN+	26	RxCLK OUT	DCLK		
				TxCLK OUT-	RxCLK IN-					

R0~R7 :Pixel R Data (7;MSB, 0;LSB)

G0~G7 :Pixel G Data (7;MSB, 0;LSB)

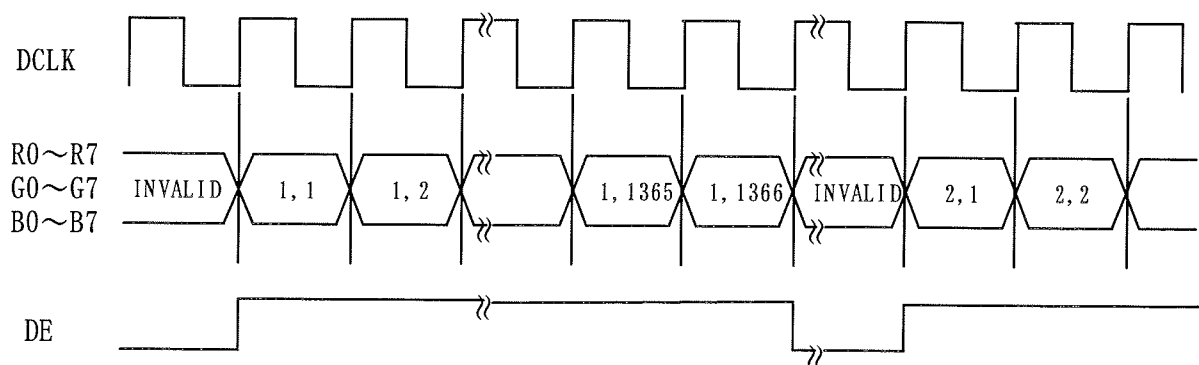
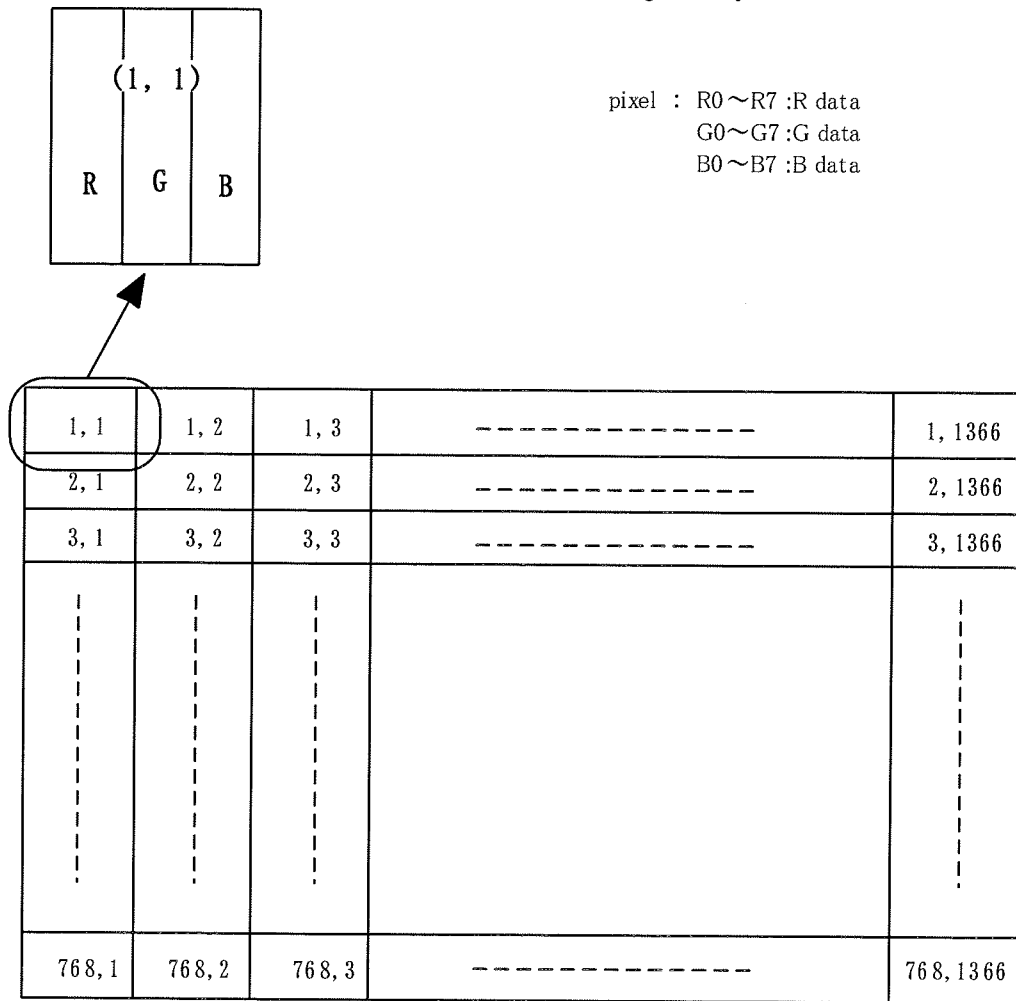
B0~B7 :Pixel B Data (7;MSB, 0;LSB)

DE :Data Enable

Notes 1)RSVD(reserved)pins on the transmitter shall be tied to"H"or"L".

## 5.5 CORRESPONDENCE BETWEEN INPUT DATA AND DISPLAY IMAGE

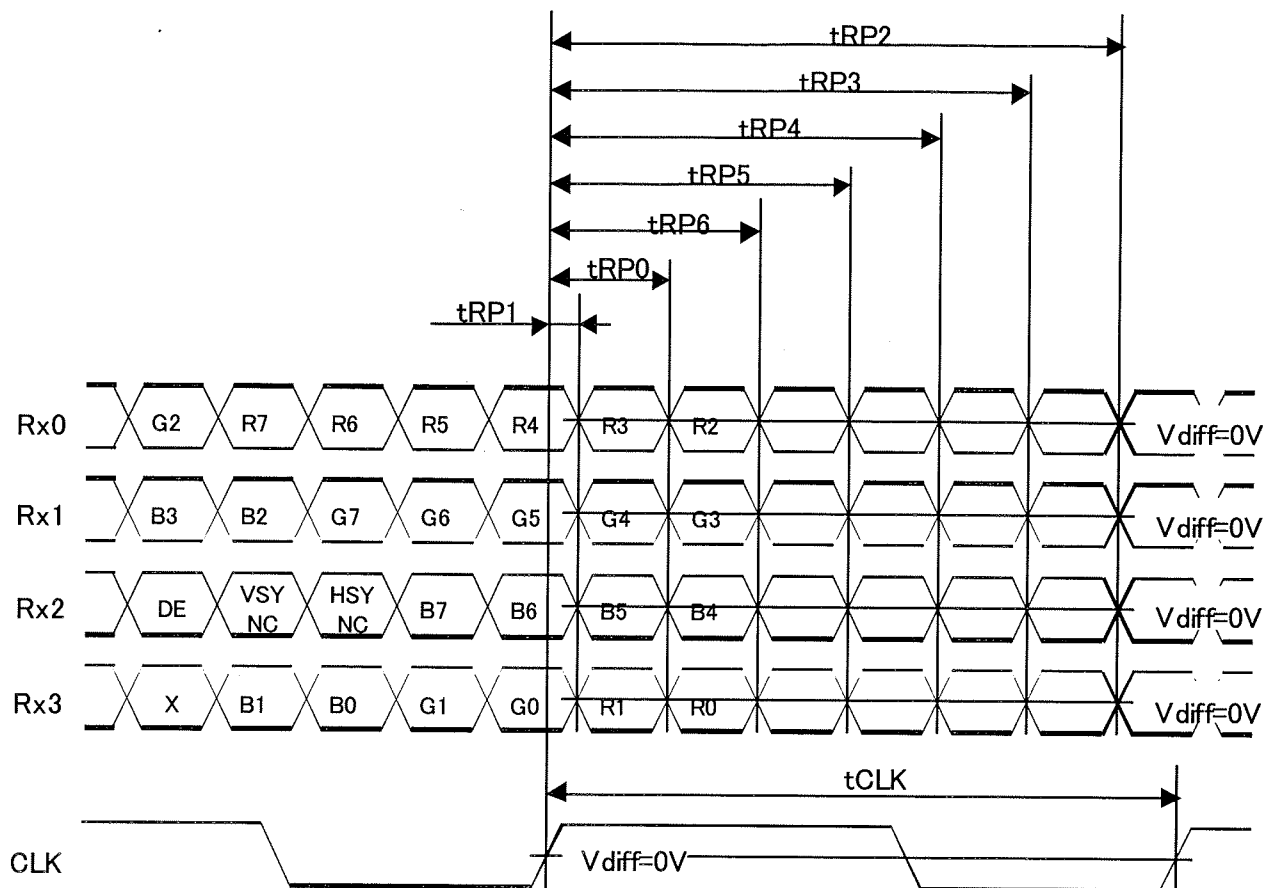
Display data of adjacent one pixel is latched during one cycle of DCLK.





## 6. INTERFACE TIMING

### 6.1 LVDS receiver timing



$$Rx0=(Rx0+)-(Rx0-)$$

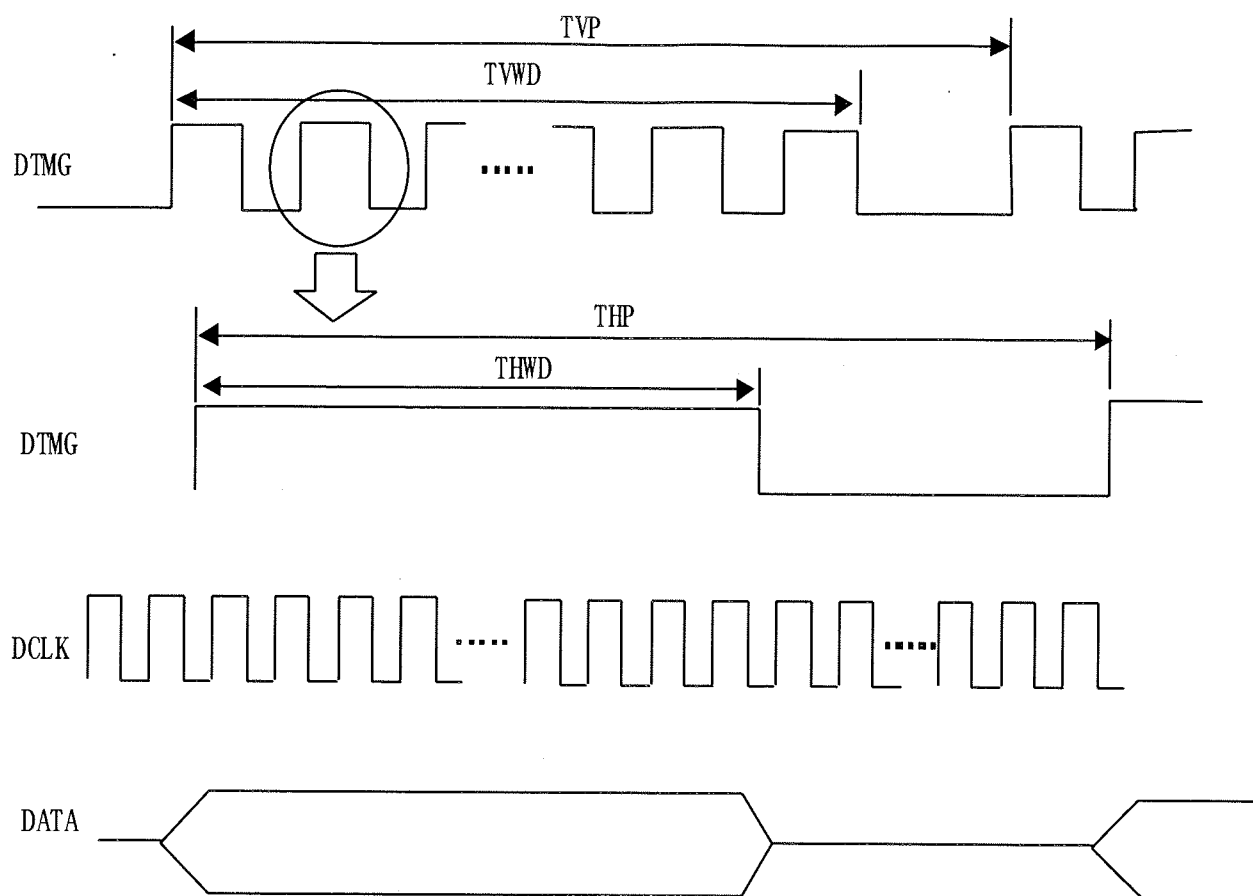
$$Rx1=(Rx1+)-(Rx1-)$$

$$Rx2=(Rx2+)-(Rx2-)$$

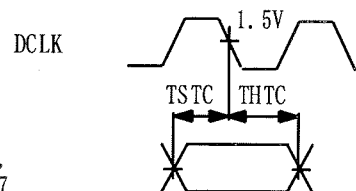
$$Rx3=(Rx3+)-(Rx3-)$$

$$CLK=(CLK+)-(CLK-)$$

Item	Symbol	Min	Typ	Max	Unit	
RCLK	Frequency	tCLK	65	82	85	MHz
Rx0 Rx1 Rx2 Rx3	0 data position	tRIP1	-0.41	0	+0.41	ns
	1st data position	tRIP0	T/7 - 0.41	T/7	T/7 + 0.41	
	2nd data position	tRIP6	2T/7 - 0.41	2T/7	2T/7 + 0.41	
	3rd data position	tRIP5	3T/7 - 0.41	3T/7	3T/7 + 0.41	
	4th data position	tRIP4	4T/7 - 0.41	4T/7	4T/7 + 0.41	
	5th data position	tRIP3	5T/7 - 0.41	5T/7	5T/7 + 0.41	
	6th data position	tRIP2	6T/7 - 0.41	6T/7	6T/7 + 0.41	

**6.2 SYNCHRONIZATION SIGNAL TIMING**


VSYNC, HSYNC, DTMG,  
R0~7, G0~7, B0~7

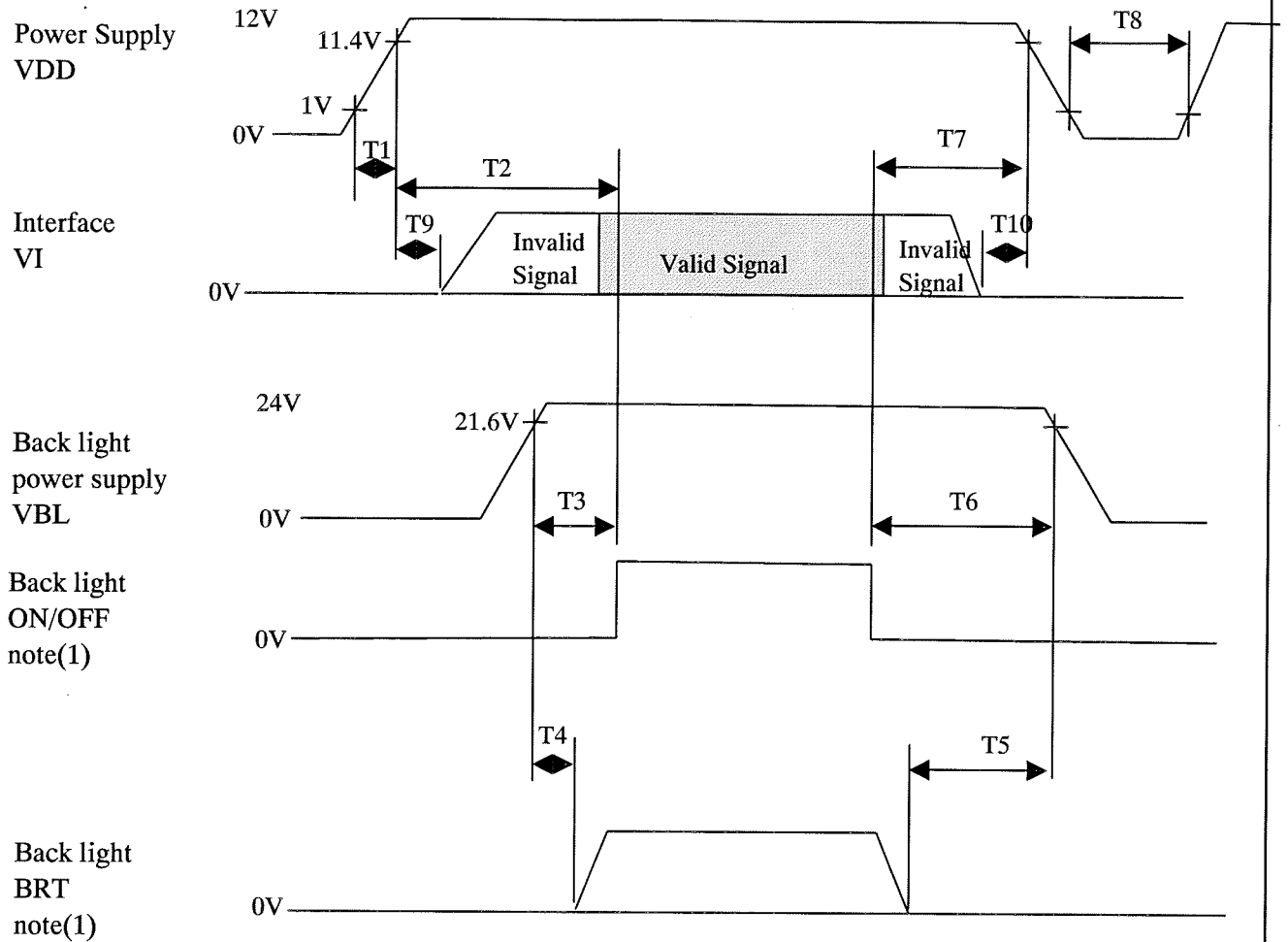


Item	Symbol	Min	Typ	Max	Unit	Note
DE	Vertical Frequency	fV	48	60	62	Hz
	Vertical Period	tV	773	800	1500	tH
	Vertical Valid	tVd	768			tH
	Horizontal Frequency	fH	41	48	60	kHz
	Horizontal Period	tH	1400	1708	2000	tCLK
	Horizontal Valid	tHd	1366			tCLK





## 6.3 TIMING BETWEEN INTERFACE SIGNALS POWER SUPPLY



$$0 \leq T1 \leq 10$$

$$350 \leq T2$$

$$0 \leq T3$$

$$1 \leq T4$$

$$0 \leq T5$$

$$0 \leq T6$$

$$0 \leq T7$$

$$1000 \leq T8$$

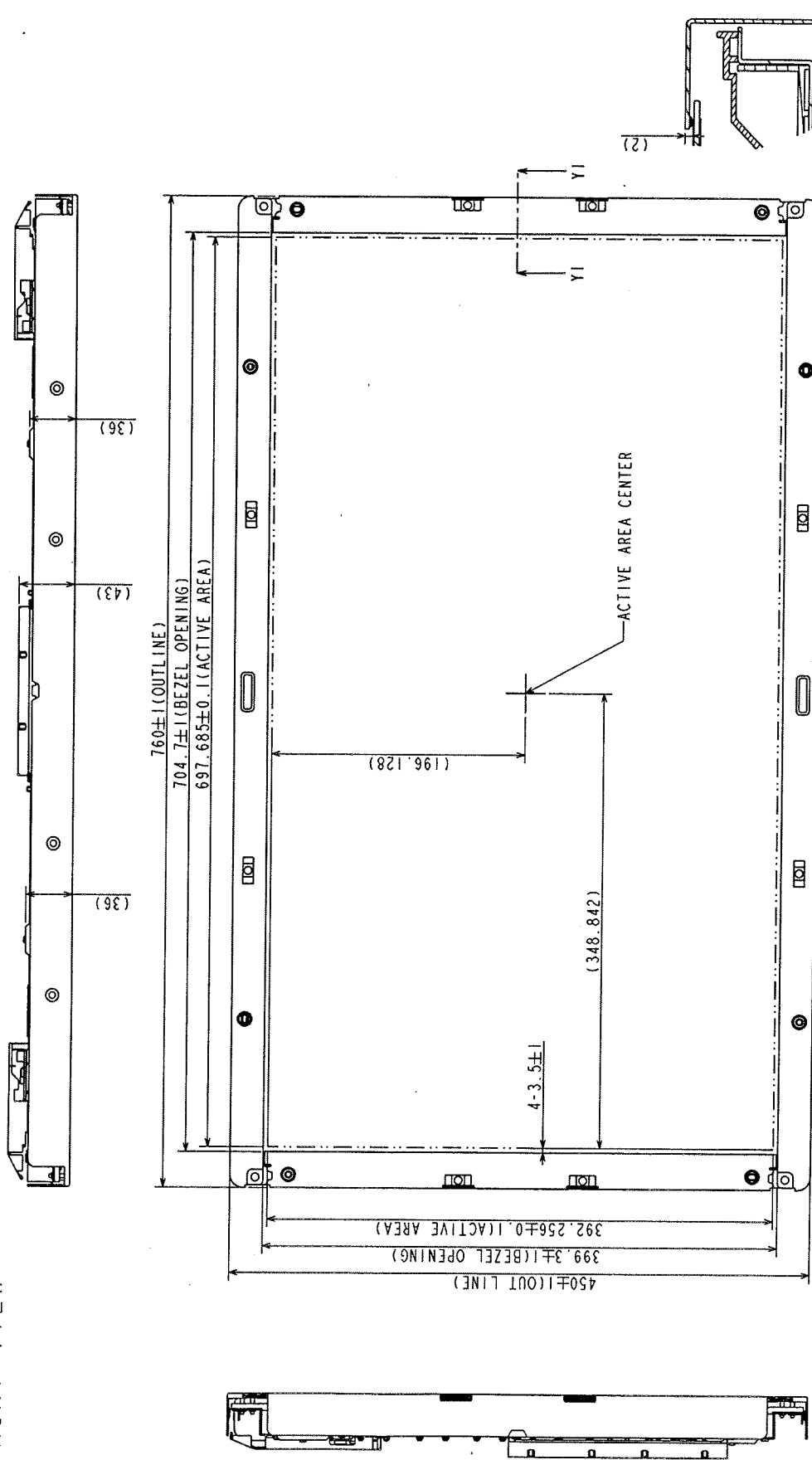
$$10 \leq T9$$

$$0 \leq T10$$

Unit : ms

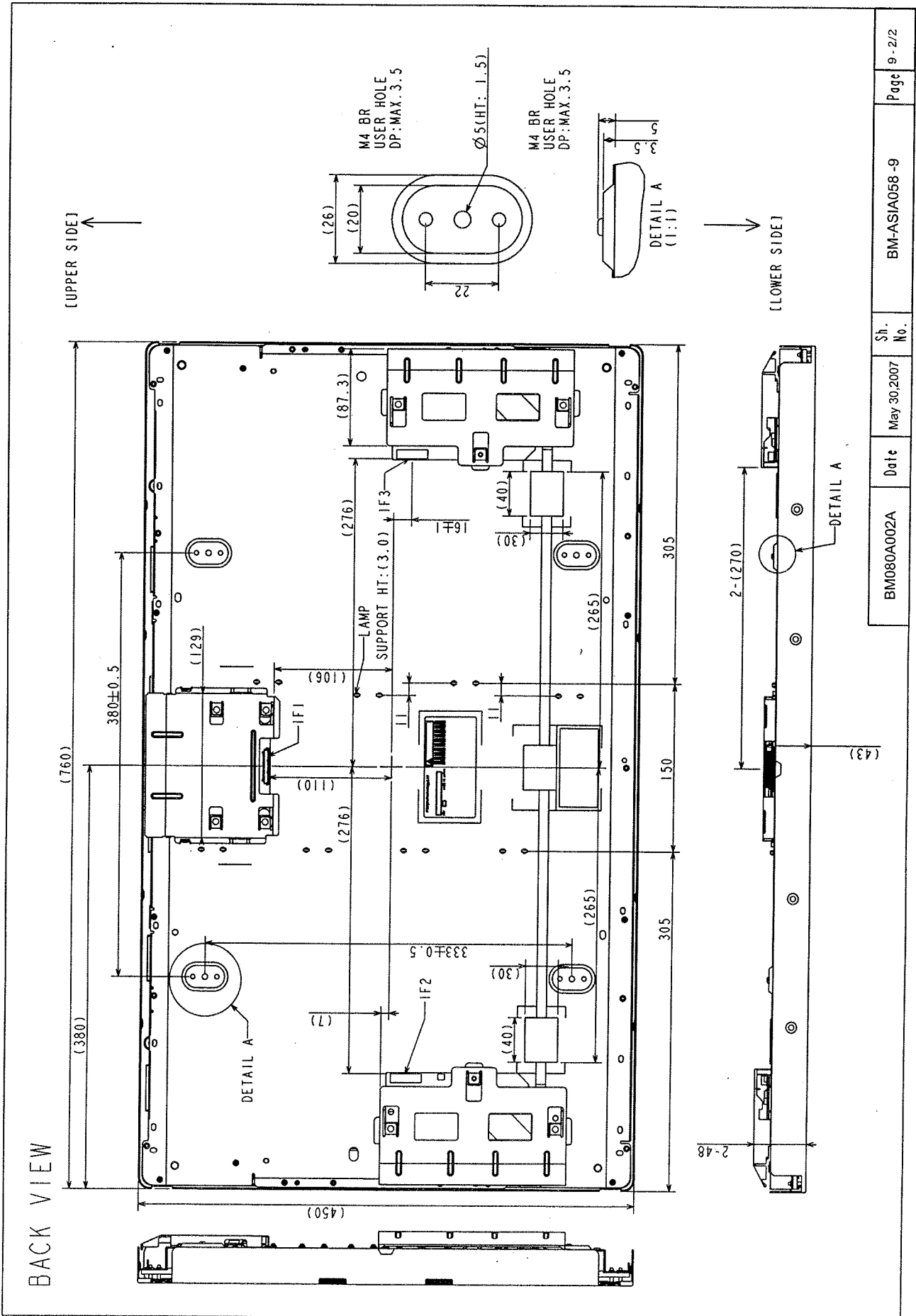
## Z-DIMENSIONAL OUTLINE

## FRONT VIEW



Note 1) The dimension in a parenthesis is a reference value.  
 2) Unspecified tolerance to be  $\pm 0.8$

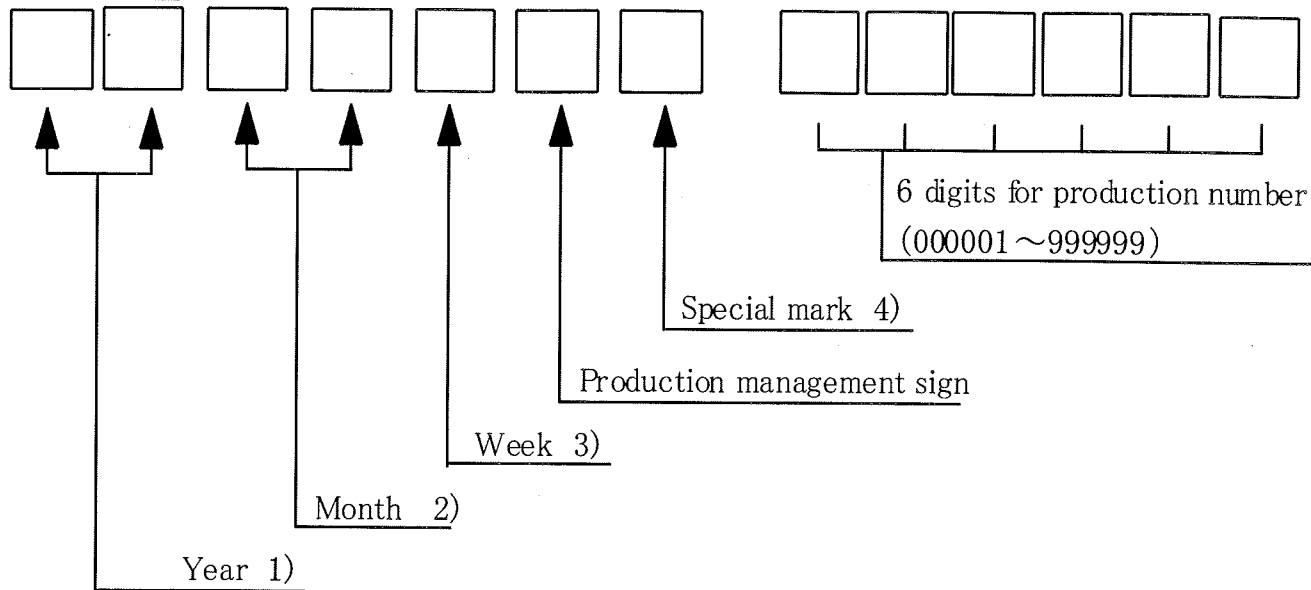
BM080A002A	Date	May 30, 2007	Sh. No.	BM-ASIA058-9	Page	9 - 1/2
------------	------	--------------	---------	--------------	------	---------



BM080A002A	Date	May 30, 2007	Sh. No.	9-2/2	Page

**8. DESIGNATION OF LOT MARK**

**8.1 LOT MARK**



**Notes**

1)

Year	Mark
2006	06
2007	07
2008	08

2)

Month	Mark	Month	Mark
1	01	7	07
2	02	8	08
3	03	9	09
4	04	10	10
5	05	11	11
6	06	12	12

3)

Week(Day)	Mark
1~7	1
8~14	2
15~21	3
22~28	4
29~31	5

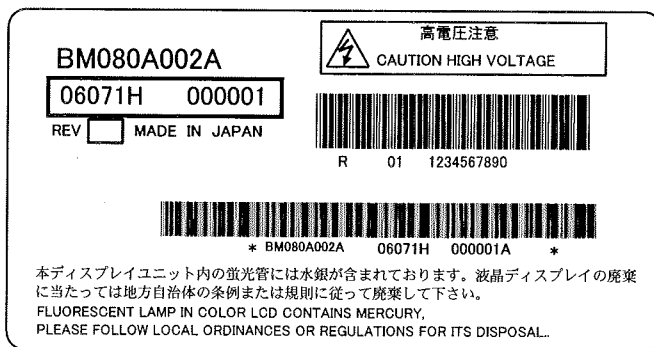
4) It is the mark that was opened up by production person to take correspondence with production number.

**8.2 Revision (REV.) control**

REV. is the column for manufacturing convenience. A-Z except I and O may be written on this column.

**8.3 Location of lot mark**

Lot mark is printed on a label. The label is on the metallic bezel as shown in 7. External Dimensional. The style of character will be changed without notice.



## 9. PRECAUTION

Please pay attention to the followings when a Super-TFT module with a back-light unit is used, handled and mounted.

### 9.1 Precaution to handling and mounting

- (1) Applying strong force to a part of the module may cause partial deformation of frame or mold, and cause damage to the display.
- (2) The module should gently and firmly be held by both hands. Never hold by just one hand in order to avoid any internal damage. Never drop or hit the module.
- (3) The module should be installed with mounting holes of a module.
- (4) Uneven force such as twisted stress should not be applied to a module when a module is mounted on the cover case. The cover case must have sufficient strength so that external force can not be transmitted directly to a module.
- (5) It is recommended to leave a space between a module and a holding board of a module so that partial force is not applied to a module.

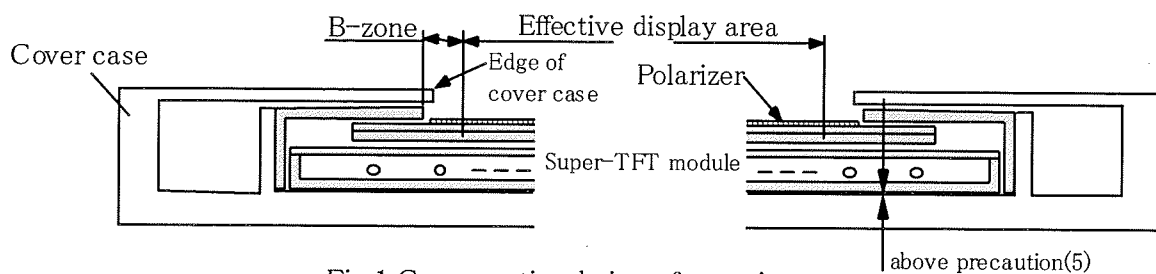


Fig.1 Cross sectional view of a monitor set

- (6) The edge of a cover case should be located inside more than 1mm from the edge of a module front frame.
- (7) A transparent protective plate should be added on the display area of a module in order to protect a polarizer and Super-TFT cell. The transparent protective plate should have sufficient strength so that the plate can not touch a module by external force.
- (8) Materials included acetic acid and choline should not be used for a cover case as well as other parts and boards near a module. Acetic acid attacks a polarizer. Choline attacks electric circuits due to electro-chemical reaction.
- (9) The polarizer on a TFT cell should carefully be handled due to its softness, and should not be touched, pushed or rubbed with glass, tweezers or anything harder than HB pencil lead. The surface of a polarizer should not be touched and rubbed with bare hand, greasy clothes or dusty clothes.
- (10) The surface of a polarizer should be gently wiped with absorbent cotton, chamois or other soft materials slightly contained petroleum benzene when the surface becomes dirty. Normal-hexane as cleaning chemicals is recommended in order to clean adhesives which fix front/rear polarizers on a Super-TFT cell. Other cleaning chemicals such as acetone, toluen and alcohol should not be used to clean adhesives because they cause chemical damage to a polarizer.
- (11) Saliva or water drops should be immediately wiped off. Otherwise, the portion of a polarizer may be deformed and its color may be faded.
- (12) The module should not be opened or modified. It may cause not to operate properly.

- (13) Metallic bezel of a module should not be handled with bare hand or dirty gloves. Otherwise, color of a metallic frame may become dirty during its storage. It is recommended to use clean soft gloves and clean finger stalls when a module is handled at incoming inspection process and production (assembly) process.
- (14) Lamp(EEFL) cables should not be pulled and held.

### 9.2 Precaution to operation

- (1) The ambient temperature near the operated module should be satisfied with the absolute maximum ratings. Unless it meets the specifications, sufficient cooling system should be adopted to system.
- (2) The spike noise causes the mis-operation of a module. The level of spike noise should be as follows:  
-200mV<=over- and under- shoot of VDD<= +200mV  
VDD including over- and under- shoot should be satisfied with the absolute maximum ratings.
- (3) Optical response time, luminance and chromaticity depend on the temperature of a Super-TFT module. Response time and saturation time of EEFL luminance become longer at lower temperature operation.
- (4) Sudden temperature change may cause dew on and/or in the a module. Dew males damage to a polarizer and/or electrical contacting portion. Dew causes fading of displayed quality.
- (5) Fixed patterns displayed on a module for a long time may cause after-image. It will be recovered soon.
- (6) A module has high frequency circuits. Sufficient suppression to electromagnetic interference should be done by system manufacturers. Grounding and shielding methods may be effective to minimize the interference.
- (7) Noise may be heard when a back-light is operated. If necessary, sufficient suppression should be done by system manufacturers.
- (8) The module should not be connected or removed while a main system works.
- (9) Inserting or pulling I/F connectors causes any trouble when power supply and signal dates are on-state.I/F connectors should be inserted and pulled after power supply and signal dates are turned off.

### 9.3 Electrostatic discharge control

- (1) Since a module consists of a Super-TFT cell and electronic circuits with CMOS-ICs, which are very weak to electrostatic discharge, persons who are handling a module should be grounded through adequate methods such as a list band. I/F connector pins should not be touched directly with bare hands.
- (2) Protection film for a polarizer on a module should be slowly peeled off so that the electrostatic charge can be minimized.

### 9.4 Precaution to strong light exposure

- (1) A module should not be exposed under strong light. Otherwise, characteristics of a polarizer and color filter in a module may be degraded.

### 9.5 Precaution to storage

When modules for replacement are stored for a long time, following precautions should be taken care of:

- (1) Modules should be stored in a dark place. It is prohibited to apply sunlight or fluorescent light during storage. Modules should be stored at 0 to 35-C at normal humidity (60%RH or less).
- (2) The surface of polarizers should not come in contact with any other object. It is recommended that modules should be stored in the Hitachi's shipping box.

BM080A002A	Date	May 30, 2007	Sheet No.	BM-ASIA 058 - B	Page	11-2/3
------------	------	--------------	-----------	-----------------	------	--------

9.6 Precaution to handling protection film

- (1) The protection film for polarizers should be peeled off slowly and carefully by persons who are electrically grounded with adequate methods such as a list band. Besides, ionized air should be blown over during peeling action. Dusts on a polarizer should be blown off by an ionized nitrogen gun and so on.
- (2) The protection film should be peeling off without rubbing it to the polarizer. Because, if the film is rubbed together with the polarizer, since the film is attached to the polarizer with a small amount of adhesive, the adhesive may remain on a polarizer.
- (3) The module with protection film should be stored on the conditions explained in 10.5 (1). However, in case that the storage time is too long, adhesive may remain on a polarizer even after a protection film is peeled off. Besides, in case that a module is stored at higher temperature and/or higher humidity, adhesive may remain on a polarizer. The remained adhesive may cause non-uniformity of display image.
- (4) The adhesive can be removed easily with Normal-Hexane. The remained adhesive or its vestige on the polarizer should be wiped off with absorbent cotton or other soft materials such as chamois slightly contained Normal-Hexane.

9.7 Safety

- (1) Since a Super-TFT cell and lamps are made of glass, handling to the broken module should be taken care sufficiently in order not to be injured. Hands touched liquid crystal from a broken cell should be washed sufficiently.
- (2) The module should not be taken apart during operation so that back-light drives by high voltage.

9.8 Environmental protection

- (1) The Super-TFT module contains cold cathode fluorescent lamps. Please follow local ordinance or regulations for its disposal.
- (2) Flexible printed circuits and printed circuits board used in a module contain small amount of lead. Please follow local ordinance or regulations for its disposal.

9.9 Use restrictions and limitations

- (1) This product is not authorized for use in life support devices or systems, military applications or other applications which pose a significant risk of personal injury.
- (2) In no event shall Hitachi, Ltd., be liable for any incidental, indirect or consequential damages in connection with the installation or use of this product, even if informed of the possibility thereof in advance. These limitations apply to all causes of action in the aggregate, including without limitation breach of contract, breach of warranty, negligence, strict liability, misrepresentation and other torts.

9.10 Others

- (1) Electrical components which may not affect electrical performance are subjective to change without notice because of their availability.

**(2) Special request,**

**Due to the market requirement, the buyer side of specified panel, is not supposed to disclose the name of the panel supplier to any third parties.**

BM080A002A	Date	May 30, 2007	Sheet No.	BM-ASIA 058 - B	Page	11-3/3
------------	------	--------------	-----------	-----------------	------	--------



Date : May 30, 2007

For Messrs: Shenzhen Lanyuan Industrial Development Co., Ltd

**COSMETIC DEFFINITION**

Product Name : BM080A002A

BM080A002A	Date	May 30,2007	Sheet No.	BM-ASIA058-COSMETIC	Page	1/4
------------	------	-------------	-----------	---------------------	------	-----

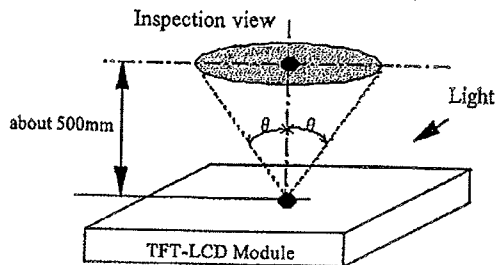


## COSMETIC DEFINITIONS

### 1. Condition for cosmetic inspection

#### (1) Viewing zone

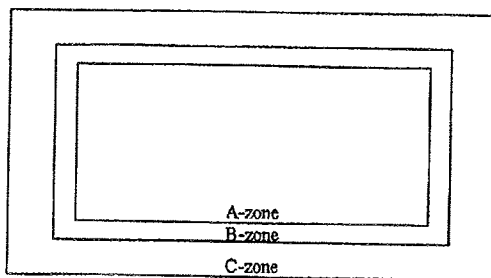
- a) The figure shows the correspondence between eyes (of inspector) and TFT-LCD module.  
 $\theta \leq 45^\circ$  : when non-operating inspection  
 $\theta \leq 5^\circ$  : when operating inspection
- b) Inspection should be executed only from front side and only A-zone.  
 Cosmetic of B-zone and C-zone are ignore.  
 (refer to 9.2 Definition of zone)



#### (2) Environmental

- a) Temperature : 25 degrees
- b) Ambient light : about 700 lx and non-directive when operating inspection.  
 : about 1000 lx and non-directive when non-operating inspection.
- c) Back-light : when non-operating inspection, back-light should be off.

### 2. Definition of zone



- A-zone : Display area (pixel area)
- B-zone : Area between A-zone and C-zone
- C-zone : Metallic bezel area

BM080A002A

Date

May 30, 2007

Sheet  
No.

BM-ASIA058-COSMETIC

Page

2/4



## 3.cosmetic definitions

When displaying conditions are not stable (ex. at turn on or off), the following specifications are not applied.

	No.	ITEM		Max. acceptable number		Unit	Note	
				A-zone				
Operating inspection	1	Dot defect	Sparkle mode	1-dot	6	pcs	1),2)	
				2-dots	2			
				3-dots	1	Units	1),2),5)	
				4-dots	0			
				Density	3	pcs/ $\phi$ 20 <sub>mm</sub>	1),2),6)	
				Total	7			
			Black mode	1-dot	15	pcs	1),3),4)	
				2-dots	3			
				3-dots	1	Units	1),3),5)	
				4-dots	0			
				Density	4	pcs/ $\phi$ 20 <sub>mm</sub>	1),3),6)	
	Total	15						
	Total	21	pcs	1)				
	2	Line defect			Serious one is not allowed.		—	—
	3	Uneven brightness			Serious one is not allowed.		—	—
4	Stain inclusion Line shape W : width(mm) L : length(mm)	$W \leq 0.08$	L : Ignore	Ignore	pcs	7)		
			$W \leq 0.25$	$L \leq 2.0$			16	
		$2.0 < L \leq 4.0$		8				
		$L > 4.0$		0				
		$W > 0.25$	—	(Sec dot shape)			0	
5	Stain inclusion Dot shape D : ave. dia.(mm)	$D \leq 0.5$		Ignore	pcs	7)		
		$D \leq 1.0$		8				
		$D > 1.0$		0				
6	Scratch on polarizer Line shape W : width(mm) L : length(mm)	$W \leq 0.15$	L : Ignore	Ignore	pcs	8)		
			$W \leq 0.3$	$L \leq 20$			10	
		$W > 0.5$		$L > 20$			0	
			—	—			0	
7	Scratch on polarizer Dot shape D : ave. dia.(mm)	$D \leq 0.6$		Ignore	pcs	8)		
		$D \leq 1.0$		10				
		$D > 1.0$		0				

BM080A002A

Date

May 30,2007

Sheet No.

BM-ASIA058-COSMETIC

Page

3/4



	No.	ITEM	Max. acceptable number A-zone	Unit	Note	
non-operating inspection	8	Bubbles, peeling in polarizer [ D : ave. dia.(mm) ]	$D \leq 0.5$	Ignore	pcs	8)
			$D \leq 1.0$	10		
			$D > 1.0$	0		
	9	Wrinkles on polarizer	Serious one is not allowed.	-	-	

- Note
- 1) Dot defect : defect area > 1/2 dot
  - 2) Sparkle mode : brightness of dot is more than 30% at black. (visible to eye)
  - 3) Black mode : brightness of dot is less than 70% at white. (visible to eye)
  - 4) 1 dot : defect dot is isolated, not attached to other defect dot.
  - 5) N dots : N defect dots are consecutive. (N means the number of defects dots)
  - 6) Density : number of defect dots inside 20mm  $\phi$ .
  - 7) Those stains which can be wiped out easily are acceptable.
  - 8) Polarizer area inside of B-zone is not applied.
  - 9) No major (serious) defects when viewed in gray scale mode.

BM080A002A	Date	May 30,2007	Sheet No.	BM-ASIA058-COSMETIC	Page	4/4
------------	------	-------------	--------------	---------------------	------	-----