



Siemens Matsushita Components

SAW Components Low Loss Filter for Mobile Communication

B4126
1747,5 MHz

Data Sheet

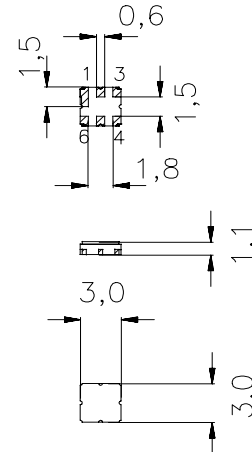
Ceramic package **DCC6C**

Features

- Low-loss RF filter for mobile telephone PCN system, transmit path
- High selectivity
- Usable passband: 75 MHz
- No matching network required for operation at 50 Ω
- Ceramic Package for **Surface Mounted Technology (SMT)**

Terminals

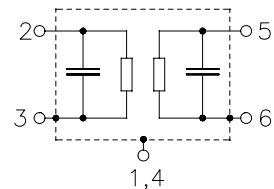
- Ni, gold-plated



Dimensions in mm, approx. weight 0,037 g

Pin configuration

- | | |
|------|-----------------|
| 2 | Input |
| 3 | Input - ground |
| 5 | Output |
| 6 | Output - ground |
| 1, 4 | To be grounded |



Type	Ordering code	Marking and Package according to	Packing according to
B4126	B39172-B4126-U410	C61157-A7-A67	F61074-V8088-Z000

Electrostatic Sensitive Device (ESD)

Maximum ratings

Operable temperature range	T	- 20 / + 70	°C	source and load impedance 50 Ω peak power of GSM signal, duty cycle 1 : 8 continuous wave
Storage temperature range	T_{stg}	- 40 / + 85	°C	
DC voltage	V_{DC}	0	V	
Input power max. 1710 ... 1785 MHz	P_{IN}	5	dBm	
elsewhere		0	dBm	



SAW Components
Low Loss Filter for Mobile Communication

B4126
1747,5 MHz

Data Sheet

Characteristics

Operating temperature range: $T = 25 \pm 2^\circ \text{C}$
 Terminating source impedance: $Z_S = 50 \Omega$
 Terminating load impedance: $Z_L = 50 \Omega$

			min.	typ.	max.	
Center frequency	f_c		—	1747,5	—	MHz
Maximum insertion attenuation	α_{\max}		—	3,5	4,0	dB
		1710,0 ... 1785,0 MHz				
Amplitude ripple (p-p)	$\Delta\alpha$		—	2,0	2,5	dB
		1710,0 ... 1785,0 MHz				
Input VSWR			—	2,3	2,5	
		1710,0 ... 1785,0 MHz				
Output VSWR			—	2,3	2,5	
		1710,0 ... 1785,0 MHz				
Attenuation	α					
		10,0 ... 1670,0 MHz	15,0	18,0	—	dB
		1670,0 ... 1690,0 MHz	10,0	25,0	—	dB
		1805,0 ... 1880,0 MHz	10,0	16,0	—	dB
		1880,0 ... 4500,0 MHz	15,0	21,0	—	dB
		4500,0 ... 5200,0 MHz	10,0	19,0	—	dB



SAW Components
Low Loss Filter for Mobile Communication

B4126
1747,5 MHz

Data Sheet

Characteristics

Operating temperature range: $T = -20$ to $+70^{\circ}\text{C}$
 Terminating source impedance: $Z_S = 50\ \Omega$
 Terminating load impedance: $Z_L = 50\ \Omega$

			min.	typ.	max.	
Center frequency	f_c		—	1747,5	—	MHz
Maximum insertion attenuation	α_{max}	1710,0 ... 1785,0 MHz	—	3,5	4,0	dB
Amplitude ripple (p-p)	$\Delta\alpha$	1710,0 ... 1785,0 MHz	—	2,0	2,5	dB
Input VSWR		1710,0 ... 1785,0 MHz	—	2,3	2,5	
Output VSWR		1710,0 ... 1785,0 MHz	—	2,3	2,5	
Attenuation	α	10,0 ... 1670,0 MHz	15,0	18,0	—	dB
		1670,0 ... 1690,0 MHz	6,0	17,0	—	dB
		1805,0 ... 1880,0 MHz	6,0	12,0	—	dB
		1880,0 ... 4500,0 MHz	15,0	21,0	—	dB
		4500,0 ... 5200,0 MHz	10,0	19,0	—	dB



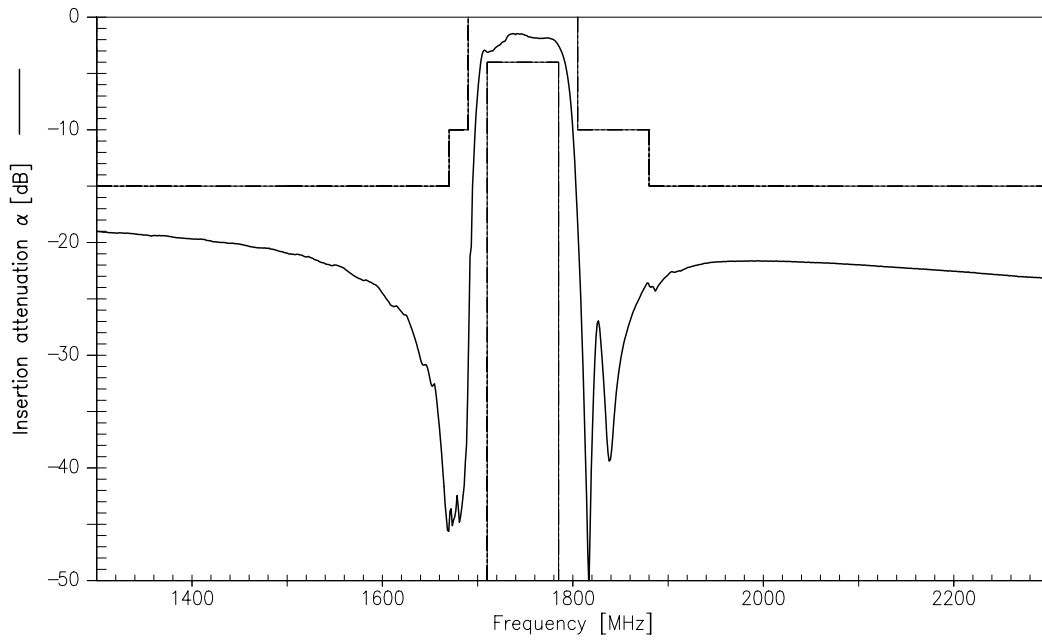
Siemens Matsushita Components

SAW Components Low Loss Filter for Mobile Communication

B4126
1747,5 MHz

Data Sheet

Transfer function (spec for 25°C)



Transfer function (wideband)

