



# SAW Components

Data Sheet B3676

Data Sheet

A large, stylized, 3D-rendered EPCOS logo is shown, appearing to be part of a globe or a sphere. The logo is rendered in a light gray color, and the globe has a textured, metallic appearance. The logo is tilted and positioned diagonally across the frame.



## SAW Components

B3676

## Low-Loss Filter

425,0 MHz

### Data Sheet

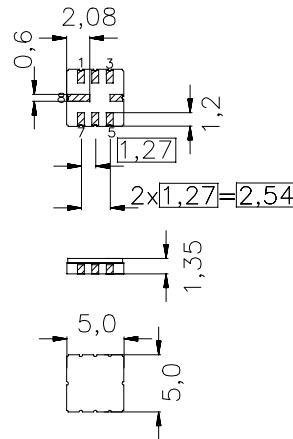
### Ceramic package QCC8C

#### Features

- Low-loss filter for TETRA
- Usable bandwidth 10 MHz
- No matching required for operation at 50  $\Omega$
- Package for Surface Mounted Technology (SMT)
- Hermetically sealed ceramic package

#### Terminals

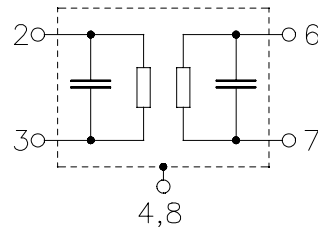
- Gold-plated



typ. Dimensions in mm, approx. weight 0,10 g

#### Pin configuration

2	Input
3	Input ground
6	Output
7	Output ground
1, 5	Ground
4, 8	Case ground



Type	Ordering code	Marking and Package according to	Packing according to
B3676	B39431-B3676-U310	C61157-A7-A56	F61074-V8070-Z000

Electrostatic Sensitive Device (ESD)

#### Maximum ratings

Operable temperature range	$T_A$	-40 / +85	$^{\circ}\text{C}$	
Storage temperature range	$T_{\text{stg}}$	-40 / +85	$^{\circ}\text{C}$	
DC voltage	$V_{\text{DC}}$	0	V	
Source power	$P_s$	10	dBm	source impedance 50 $\Omega$



## SAW Components

B3676

### Low-Loss Filter

425,0 MHz

#### Data Sheet

##### Characteristics

Operating temperature range:  $T_A = +15 \dots +35 \text{ }^\circ\text{C}$   
Terminating source impedance:  $Z_S = 50 \text{ }\Omega$   
Terminating load impedance:  $Z_L = 50 \text{ }\Omega$

		min.	typ.	max.	
<b>Nominal frequency</b>	$f_N$	—	425,0	—	MHz
<b>Maximum insertion attenuation</b> 420,0 MHz ... 430,0 MHz	$\alpha_{\max}$	—	2,5	4,0	dB
<b>Amplitude ripple (p-p)</b> 420,0 MHz ... 430,0 MHz	$\Delta\alpha$	—	0,45	1,0	dB
<b>VSWR</b> 420,0 MHz ... 430,0 MHz		—	1,4:1	2,0:1	
<b>Absolute attenuation</b>	$\alpha_{\text{abs}}$				
0,3 MHz ... 350,0 MHz		40	55	—	dB
350,0 MHz ... 400,0 MHz		20	45	—	dB
455,0 MHz ... 471,0 MHz		20	27	—	dB
490,0 MHz ... 512,0 MHz		30	60	—	dB
525,0 MHz ... 553,0 MHz		20	60	—	dB
560,0 MHz ... 593,0 MHz		40	60	—	dB
593,0 MHz ... 910,0 MHz		20	50	—	dB
910,0 MHz ... 1105,0 MHz		40	42	—	dB
1105,0 MHz ... 2000,0 MHz		20	25	—	dB
<b>Temperature coefficient of frequency</b>	$TC_f$	—	– 70	—	ppm/K



## SAW Components

B3676

### Low-Loss Filter

425,0 MHz

#### Data Sheet

##### Characteristics

Operating temperature range:  $T_A = -30 \dots +70 \text{ }^\circ\text{C}$   
 Terminating source impedance:  $Z_S = 50 \text{ }\Omega$   
 Terminating load impedance:  $Z_L = 50 \text{ }\Omega$

		min.	typ.	max.	
<b>Nominal frequency</b>	$f_N$	—	425,0	—	MHz
<b>Maximum insertion attenuation</b> 420,0 MHz ... 430,0 MHz	$\alpha_{\max}$	—	3,0	5,0	dB
<b>Amplitude ripple (p-p)</b> 420,0 MHz ... 430,0 MHz	$\Delta\alpha$	—	0,6	2,0	dB
<b>VSWR</b> 420,0 MHz ... 430,0 MHz		—	1,4:1	2,0:1	
<b>Absolute attenuation</b>	$\alpha_{\text{abs}}$				
0,3 MHz ... 350,0 MHz		40	55	—	dB
350,0 MHz ... 400,0 MHz		20	45	—	dB
455,0 MHz ... 471,0 MHz		20	27	—	dB
490,0 MHz ... 512,0 MHz		30	60	—	dB
525,0 MHz ... 553,0 MHz		20	60	—	dB
560,0 MHz ... 593,0 MHz		40	60	—	dB
593,0 MHz ... 910,0 MHz		20	50	—	dB
910,0 MHz ... 1105,0 MHz		40	42	—	dB
1105,0 MHz ... 2000,0 MHz		20	25	—	dB
<b>Temperature coefficient of frequency</b>	$TC_f$	—	- 70	—	ppm/K



SAW Components

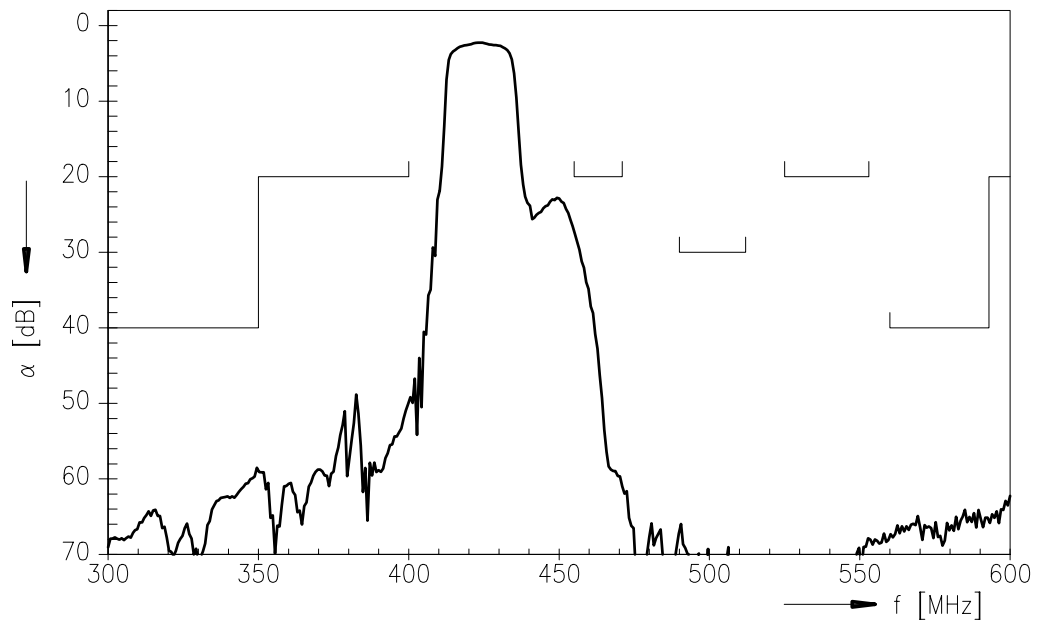
B3676

Low-Loss Filter

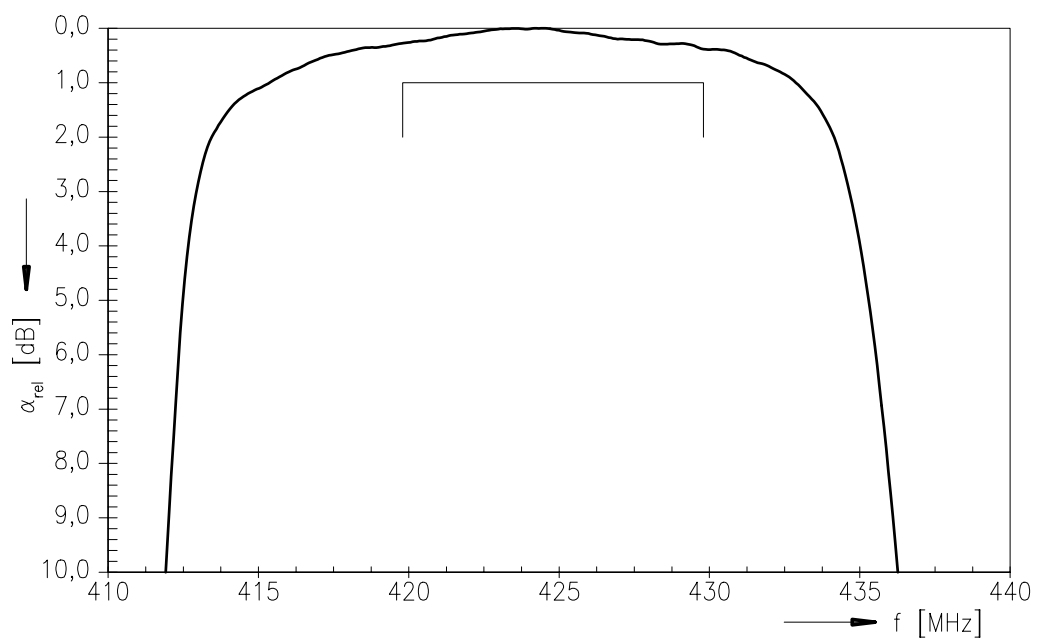
425,0 MHz

Data Sheet

Transfer function



Transfer function (pass band; +15 °C ... +35 °C)





<b>SAW Components</b>	<b>B3676</b>
<b>Low-Loss Filter</b>	<b>425,0 MHz</b>

## Data Sheet

**Published by EPCOS AG**  
**Surface Acoustic Wave Components Division, OFW E NK**  
**P.O. Box 80 17 09, D-81617 München**

© EPCOS AG 1999. All Rights Reserved.

As far as patents or other rights of third parties are concerned, liability is only assumed for components per se, not for applications, processes and circuits implemented within components or assemblies.

The information describes the type of component and shall not be considered as assured characteristics.

Terms of delivery and rights to change design reserved.

For questions on technology, prices and delivery please contact the sales offices of EPCOS AG or the international representatives.

Due to technical requirements components may contain dangerous substances. For information on the type in question please also contact one of our sales offices.