

# AZ9722

## 30 AMP MINIATURE POWER RELAY FOR AUTOMOTIVE USE

### FEATURES

- Low cost
- Up to 30 Amp switching capability in a compact size
- Coils to 24 VDC
- Fits standard wiring harness socket
- Vibration and shock resistant
- Designed for high in-rush applications
- Available with parallel coil resistor



### CONTACTS

Arrangement	SPST (1 Form A)
Ratings	Resistive load: Max. switched power: 360 W Max. switched current: 30 A Max. switched voltage: 30VDC
Minimum Load	5 VDC, 0.1 A
Material	Silver alloy
Resistance	< 50 milliohms initially

### COIL

Power	
At Pickup Voltage (typical)	608 mW
Max. Continuous Dissipation	2.5 W at 20°C (68°F) ambient
Temperature Rise	60°C (108°F) nominal coil VDC
Max. Temperature	155°C (311°F)

### NOTES

1. All values at 20°C (68°F).
2. Relay may pull in with less than "Must Operate" value.
3. Specifications subject to change without notice.

### GENERAL DATA

Life Expectancy Mechanical Electrical	Minimum operations 1 x 10 <sup>7</sup> operations 1 x 10 <sup>5</sup> operations at rated load
Operate Time (typical)	10 ms at nominal coil voltage
Release Time (typical)	10 ms at nominal coil voltage (with no coil suppression)
Dielectric Strength (at sea level for 1 min.)	500 Vrms coil to contact 500 Vrms between open contacts
Insulation Resistance	50 megohms min. at 20°C, 500 VDC, 50% RH
Dropout	Greater than 10% of nominal coil voltage
Ambient Temperature Operating Storage	At nominal coil voltage -40°C (-40°F) to 85°C (185°F) -40°C (-40°F) to 155°C (311°F)
Vibration	0.062" DA at 10–55 Hz
Shock	20 g
Terminals	Tinned copper alloy, Quick Connect/Socket
Weight	35 g



**AMERICAN ZETTLER, INC.**

[www.azettler.com](http://www.azettler.com)

75 COLUMBIA • ALISO VIEJO, CA 92656 • PHONE: (949) 831-5000 • FAX: (949) 831-8642 • E-MAIL: [SALES@AZETTLER.COM](mailto:SALES@AZETTLER.COM)

10/27/98W

# AZ9722

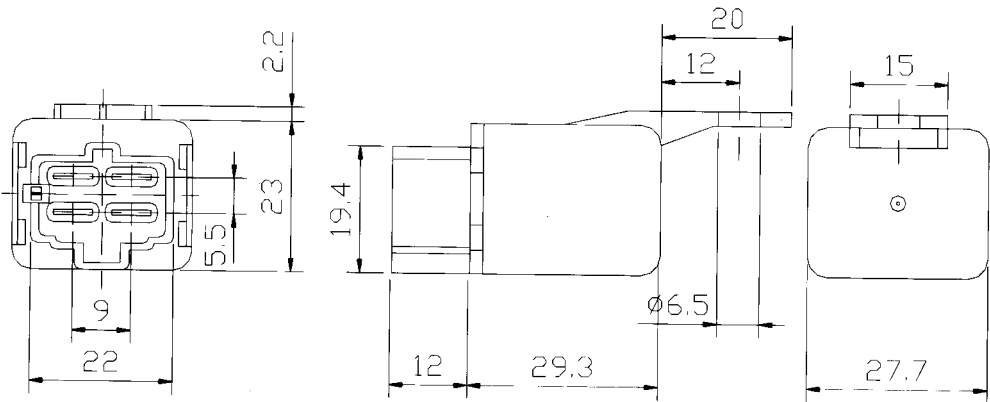
**RELAY ORDERING DATA – Standard**

COIL SPECIFICATIONS				ORDER NUMBER
Nominal Coil VDC	Must Operate VDC	Max. Continuous VDC	Coil Resistance $\pm 10\%$	Form A (SPST)
12	7.8	15.8	100	AZ9722-1A-12D
24	17	31.6	400	AZ9722-1A-24D

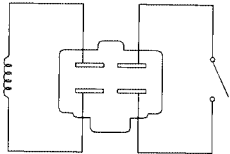
Add suffix R1 for 680/2700 Ohm resistor across 12/24 volt coil.  
Add suffix R2 for 820/3200 Ohm resistor across 12/24 volt coil.

**MECHANICAL DATA**

**Outline Dimensions**



**Wiring Diagram**



Viewed toward terminals



**AMERICAN ZETTLER, INC.** [www.azettler.com](http://www.azettler.com)

75 COLUMBIA • ALISO VIEJO, CA 92656 • PHONE: (949) 831-5000 • FAX: (949) 831-8642 • E-MAIL: SALES@AZETTLER.COM

10/27/98W