

Features

General

- High-performance, Low-power secureAVR™ Enhanced RISC Architecture
 - 133 Powerful Instructions (Most Executed in a Single Clock Cycle)
- Low-power Idle and Power-down Modes
- Bond Pad Locations Conforming to ISO 7816-2
- ESD Protection to $\pm 6000V$
- Operating Range: from 2.7V to 5.5V
- Compliant with GSM, 3GPP and EMV 2000 Specifications; PC Industry Compatible
- Available in Wafers, Modules and Industry-standard Packages

Memory

- 192K Bytes of ROM Program Memory
- 36K Bytes of EEPROM, Including 128 OTP Bytes and 384-byte Bit-addressable Bytes
 - 1 to 128-byte Program/Erase
 - 1 ms Program, 1 ms Erase
 - Typically More than 500,000 Write/Erase Cycles at a Temperature of 25°C
 - 10 Years Data Retention
- EEPROM Erase Only Mode
- Write EEPROM With or Without Autoerase
- 4K Bytes of RAM

Peripherals

- ISO 7816 Controller
 - Up to 625 kbps at 5 MHz
 - Compliant with T = 0 and T = 1 Protocols
- One I/O Port
- Programmable Internal Oscillator (Up to 20 MHz on ROM)
- Two 16-bit Timers
- Random Number Generator (RNG)
- 2-level, 7-vector Interrupt Controller
- Hardware DES and Triple DES DPA Resistant
- Checksum Accelerator
- CRC 16 Engine (Compliant with ISO/IEC 3309)

Security

- Dedicated Hardware for Protection Against SPA/DPA Attacks
- Advanced Protection Against Physical Attack
- Environmental Protection Systems
- Voltage Monitor
- Frequency Monitor
- Light Protection
- Secure Memory Management/Access Protection (Supervisor Mode)

Development Tools

- Voyager Emulation Platform (ATV2 Advanced) to Support Software Development
- IAR Systems C-Spy Debugger or Atmel's AVR Studio Version 4.07 or Above
- Software Libraries and Application Notes



Secure Microcontroller for Smart Cards

AT90SC19236R

Summary

Rev. 1590AS–SMIC–06/03



Note: This is a summary document. A complete document is available under NDA. For more information, please contact your local Atmel sales office.

Description

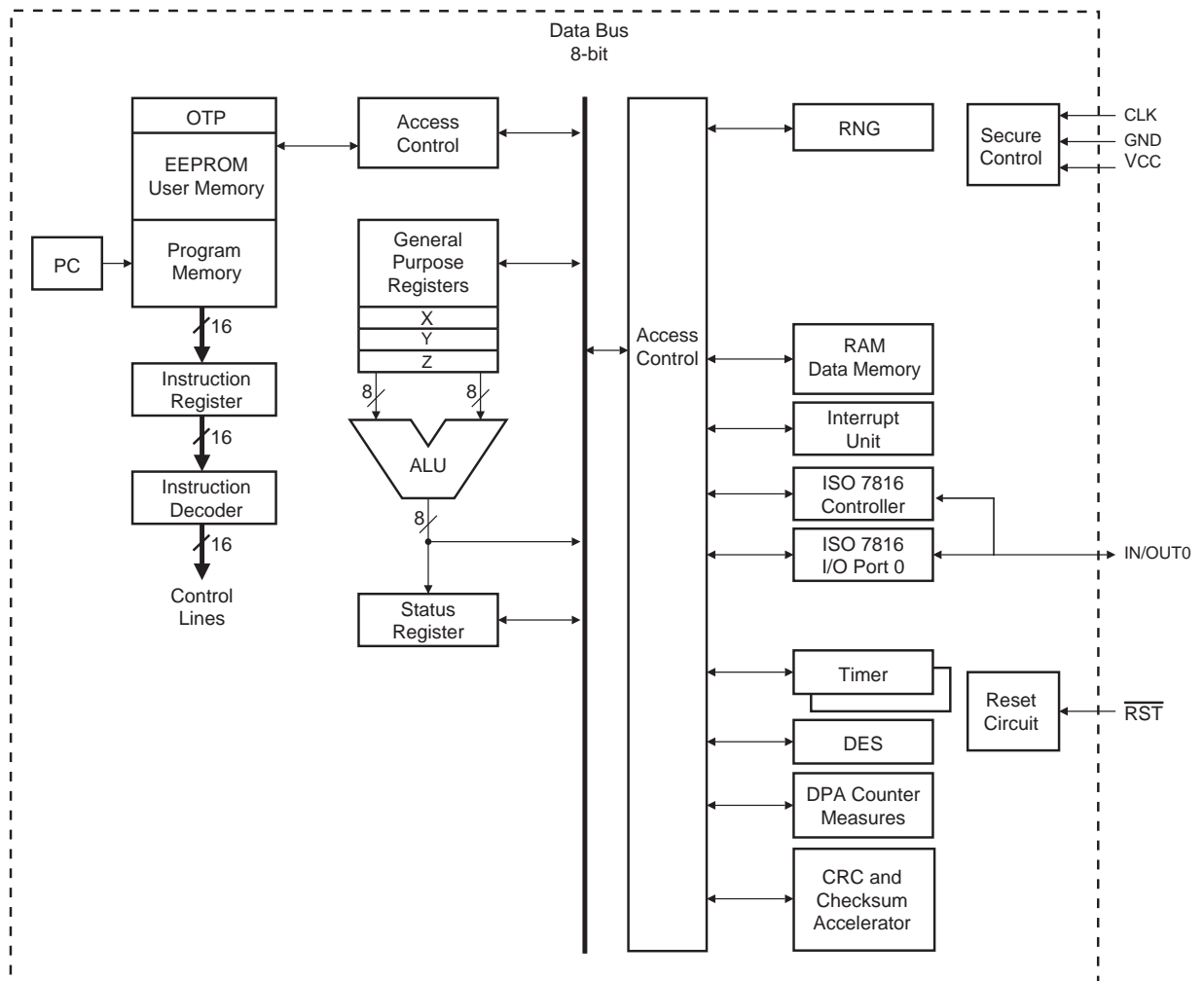
The AT90SC19236R is a low-power, high-performance, 8/16-bit microcontroller with ROM program memory, EEPROM data memory, based on the secureAVR enhanced RISC architecture. By executing powerful instructions in a single clock cycle, the AT90SC19236R achieves throughputs close to 1 MIPS per MHz. Its Harvard architecture includes 32 general-purpose working registers directly connected to the ALU, allowing two independent registers to be accessed in one single instruction executed in one clock cycle.

The AT90SC19236R uses a new AVR architecture, the secureAVR that allows the linear addressing of up to 8M bytes of code and up to 16M bytes of data as well as a number of new functional and security features.

The ability to map the EEPROM in the code space allows parts of the program memory to be reprogrammed in-system. This technology combined with the versatile 8/16-bit CPU on a monolithic chip provides a highly flexible and cost-effective solution to many smart card applications.

Additional security features include power and frequency protection logic, logical scrambling on program data and addresses, Power Analysis countermeasures and memory accesses controlled by a supervisor mode. A block diagram of the AT90SC19236R is shown in Figure 1.

Figure 1. AT90SC19236R secure AVR Enhanced RISC Architecture





Atmel Headquarters

Corporate Headquarters

2325 Orchard Parkway
San Jose, CA 95131
TEL 1(408) 441-0311
FAX 1(408) 487-2600

Europe

Atmel Sarl
Route des Arsenaux 41
Case Postale 80
CH-1705 Fribourg
Switzerland
TEL (41) 26-426-5555
FAX (41) 26-426-5500

Asia

Room 1219
Chinachem Golden Plaza
77 Mody Road Tsimhatsui
East Kowloon
Hong Kong
TEL (852) 2721-9778
FAX (852) 2722-1369

Japan

9F, Tonetsu Shinkawa Bldg.
1-24-8 Shinkawa
Chuo-ku, Tokyo 104-0033
Japan
TEL (81) 3-3523-3551
FAX (81) 3-3523-7581

Atmel Operations

Memory

2325 Orchard Parkway
San Jose, CA 95131
TEL 1(408) 441-0311
FAX 1(408) 436-4314

Microcontrollers

2325 Orchard Parkway
San Jose, CA 95131
TEL 1(408) 441-0311
FAX 1(408) 436-4314

La Chantreterie
BP 70602
44306 Nantes Cedex 3, France
TEL (33) 2-40-18-18-18
FAX (33) 2-40-18-19-60

ASIC/ASSP/Smart Cards

Zone Industrielle
13106 Rousset Cedex, France
TEL (33) 4-42-53-60-00
FAX (33) 4-42-53-60-01

1150 East Cheyenne Mtn. Blvd.
Colorado Springs, CO 80906
TEL 1(719) 576-3300
FAX 1(719) 540-1759

Scottish Enterprise Technology Park
Maxwell Building
East Kilbride G75 0QR, Scotland
TEL (44) 1355-803-000
FAX (44) 1355-242-743

RF/Automotive

Theresienstrasse 2
Postfach 3535
74025 Heilbronn, Germany
TEL (49) 71-31-67-0
FAX (49) 71-31-67-2340

1150 East Cheyenne Mtn. Blvd.
Colorado Springs, CO 80906
TEL 1(719) 576-3300
FAX 1(719) 540-1759

Biometrics/Imaging/Hi-Rel MPU/ High Speed Converters/RF Datacom

Avenue de Rochepleine
BP 123
38521 Saint-Egreve Cedex, France
TEL (33) 4-76-58-30-00
FAX (33) 4-76-58-34-80

e-mail

literature@atmel.com

Web Site

<http://www.atmel.com>

© Atmel Corporation 2003.

Atmel Corporation makes no warranty for the use of its products, other than those expressly contained in the Company's standard warranty which is detailed in Atmel's Terms and Conditions located on the Company's web site. The Company assumes no responsibility for any errors which may appear in this document, reserves the right to change devices or specifications detailed herein at any time without notice, and does not make any commitment to update the information contained herein. No licenses to patents or other intellectual property of Atmel are granted by the Company in connection with the sale of Atmel products, expressly or by implication. Atmel's products are not authorized for use as critical components in life support devices or systems.

ATMEL® is a registered trademark of Atmel; AVR™ is a trademark of Atmel.

C-Spy® is a registered trademark of IAR Systems AB. Other terms and product names may be the trademark of others.



Printed on recycled paper.