

## General Description

The AOZ8221 is a one-line bi-directional transient voltage suppressor diode designed to protect voltage sensitive electronics from high transient conditions and ESD.

This device incorporates one TVS diode in an ultra-small SOD523 package. It may be used to meet the ESD immunity requirements of IEC 61000-4-2, Level 4 ( $\pm 15\text{kV}$  air,  $\pm 8\text{kV}$  contact discharge).

The AOZ8221 comes in an RoHS compliant SOD523 package and is rated over a  $-40^{\circ}\text{C}$  to  $+85^{\circ}\text{C}$  ambient temperature range.

The ultra-small  $1.6 \times 0.8 \times 0.6\text{mm}$  SOD523 package makes it ideal for applications where PCB space is a premium. The small size and high ESD protection makes it ideal for protecting voltage sensitive electronics from high transient conditions and ESD.

## Features

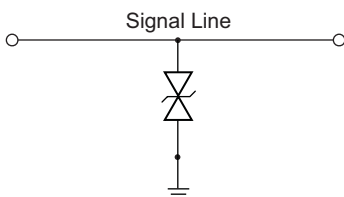
- ESD protection for high-speed data lines:
  - Exceeds: IEC 61000-4-2 (ESD)  $\pm 24\text{kV}$  (air),  $\pm 24\text{kV}$  (contact)
  - Human Body Model (HBM)  $\pm 30\text{kV}$
- Small package saves board space
- Low insertion loss
- Low clamping voltage
- Low operating voltage:  $5.0\text{V}$
- Pb-free device

## Applications

- Portable handheld devices
- Keypads, data lines, buttons
- Notebook computers
- Digital Cameras
- Portable GPS
- MP3 players



## Typical Application



Bidirection Protection of Single Line

## Pin Configuration



## Ordering Information

Part Number	Ambient Temperature Range	Package	Environmental
AOZ8221NI-05L	-40°C to +85°C	SOD523	RoHS Compliant Green Product



All AOS products are offered in packages with Pb-free plating and compliant to RoHS standards. Parts marked as Green Products (with "L" suffix) use reduced levels of Halogens, and are also RoHS compliant. Please visit [www.aosmd.com/web/quality/rohs\\_compliant.jsp](http://www.aosmd.com/web/quality/rohs_compliant.jsp) for additional information.

## Absolute Maximum Ratings

Exceeding the Absolute Maximum ratings may damage the device.

Parameter	Rating
VP – VN	5V
Peak Pulse Current ( $I_{PP}$ ), $t_P = 8/20\mu s$	5A
Storage Temperature ( $T_S$ )	-65°C to +150°C
ESD Rating per IEC61000-4-2, Contact <sup>(1)</sup>	±24kV
ESD Rating per IEC61000-4-2, Air <sup>(1)</sup>	±24kV
ESD Rating per Human Body Model <sup>(2)</sup>	±30kV

### Notes:

- IEC 61000-4-2 discharge with  $C_{Discharge} = 150pF$ ,  $R_{Discharge} = 330\Omega$ .
- Human Body Discharge per MIL-STD-883, Method 3015  $C_{Discharge} = 100pF$ ,  $R_{Discharge} = 1.5k\Omega$ .

## Maximum Operating Ratings

Parameter	Rating
Junction Temperature ( $T_J$ )	-40°C to +85°C

## Electrical Characteristics

$T_A = 25^\circ C$  unless otherwise specified.

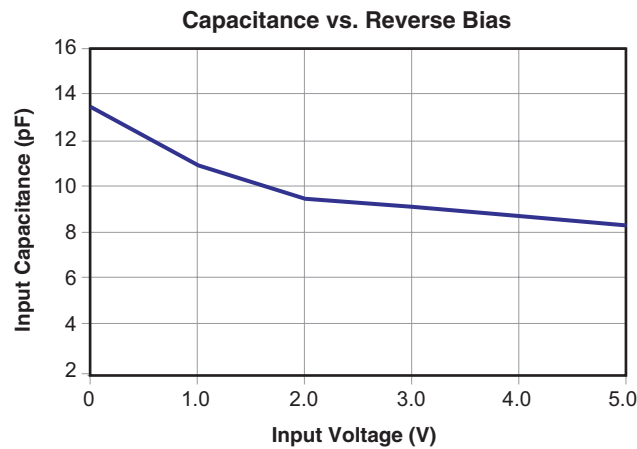
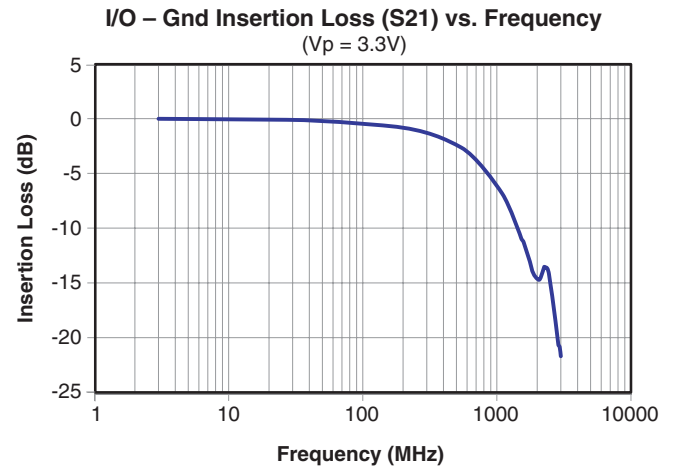
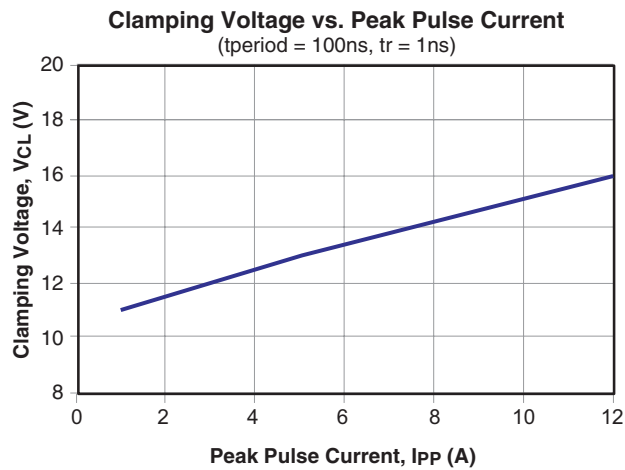
Symbol	Parameter	Symbol	Parameter
$I_{PP}$	Maximum Reverse Peak Pulse Current	$I_T$	Test Current
$V_{CL}$	Clamping Voltage @ $I_{PP}$	$I_F$	Forward Current
$V_{RWM}$	Working Peak Reverse Voltage	$V_F$	Forward Voltage @ $I_F$
$I_R$	Maximum Reverse Leakage Current @ $V_{RWM}$	$P_{pk}$	Peak Power Dissipation
$V_{BR}$	Breakdown Voltage @ $I_T$	$C_J$	Max. Capacitance @ $V_R = 0$ and $f = 1MHz$

## Electrical Characteristics

$T_A = 25^\circ C$  unless otherwise noted,  $V_F = 0.9V$  Max. @  $I_F = 10mA$  for all types

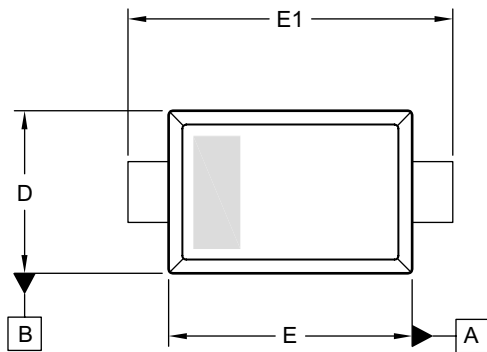
Device	Device Marking	$V_{RWM}$ (V) Max.	$V_{BR}$ (V) Max.	$I_R$ ( $\mu A$ ) Max.	$V_F$ (V) Typ.	$V_{CL}$ Max.			$C_J$ (pF) Typ.
						$I_{PP} = 1A$	$I_{PP} = 5A$	$I_{PP} = 12A$	
AOZ8221NI-05L	H	5.0	6.0	0.1	1.0	11.00	13.00	16.00	13

## Typical Performance Characteristics

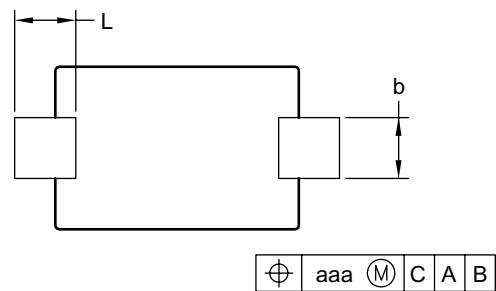


www.DataSheet4U.com

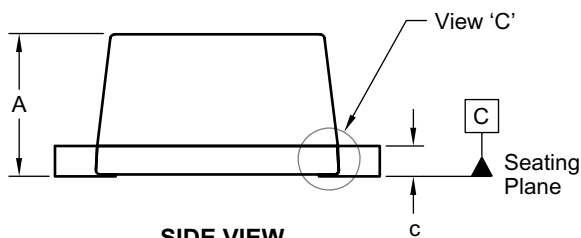
## Package Dimensions, SOD523



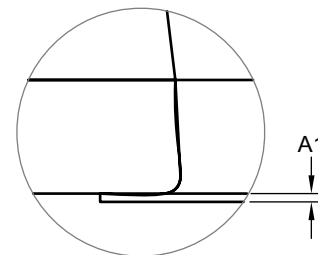
TOP VIEW



BOTTOM VIEW

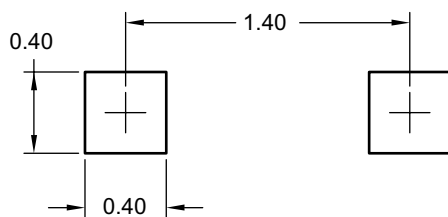


SIDE VIEW



VIEW 'C'

### RECOMMENDED LAND PATTERN



UNIT: mm

### Dimensions in millimeters

Symbols	Min.	Nom.	Max.
A	0.50	0.60	0.70
A1	0.00	—	0.05
b	0.25	0.30	0.35
c	0.07	—	0.20
D	0.70	0.80	0.90
E	1.10	1.20	1.30
E1	1.50	1.60	1.70
L	0.25	0.30	0.40
aaa	0.08		

### Dimensions in inches

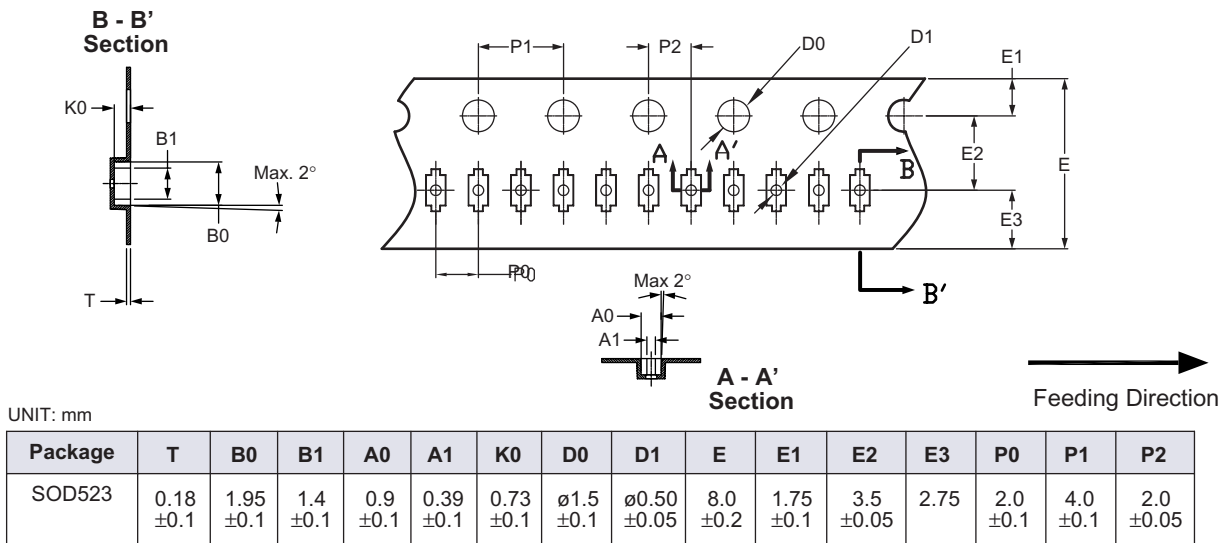
Symbols	Min.	Nom.	Max.
A	0.020	0.024	0.028
A1	0.00	—	0.002
b	0.010	0.012	0.014
c	0.003	—	0.008
D	0.028	0.031	0.035
E	0.043	0.047	0.051
E1	0.059	0.063	0.067
L	0.010	0.012	0.016
aaa	0.003		

### Notes:

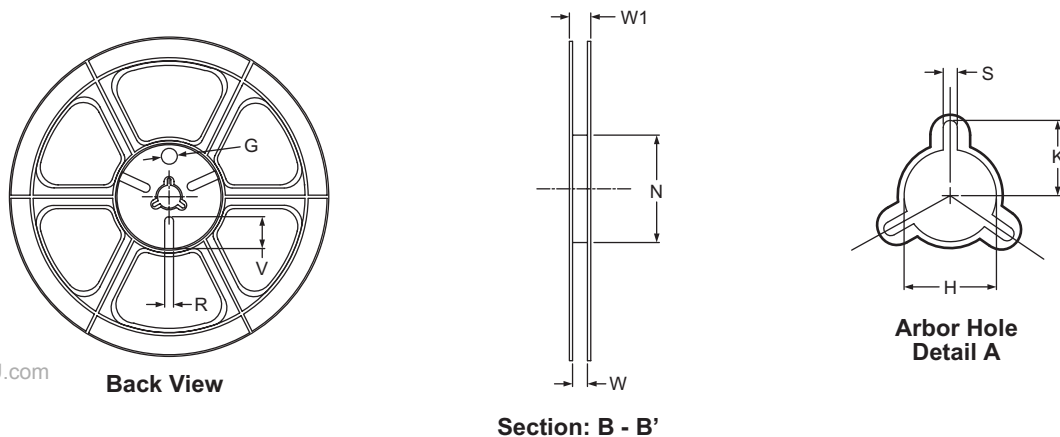
1. All Dimensions are in millimeters.
2. Dimensions are inclusive of plating.
3. Controlling dimension is millimeter, converted inch dimensions are not necessarily exact.
4. The cathode mark is optional.
5. Package body sizes exclude mold flash and gate burrs. Mold flash at the non-lead sides should be less than 3 mils each.

## Tape and Reel Dimensions, SOD523

### Tape



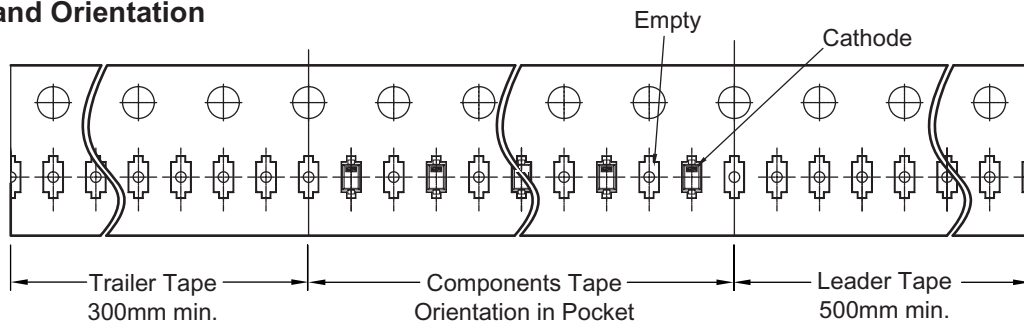
### Reel



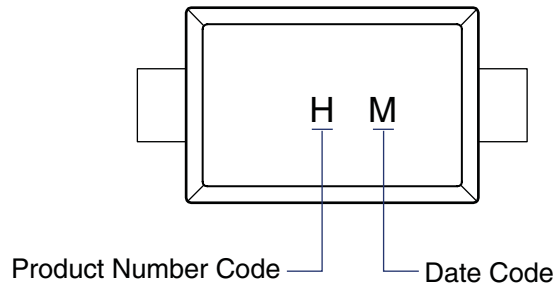
UNIT: mm

Tape Size	Reel Size	M	N	W	W1	H	K	S	G	R	V
8mm	ø180	ø180.00 ±0.5	ø60.50	9.0 ±0.30	11.40 ±1.00	ø13.00 +0.50/-2.0	10.60	2.00 ±0.50	ø9.00	5.00	18.00

### Leader/Trailer and Orientation



## Part Marking



www.DataSheet4U.com

**This datasheet contains preliminary data; supplementary data may be published at a later date. Alpha & Omega Semiconductor reserves the right to make changes at any time without notice.**

### LIFE SUPPORT POLICY

ALPHA & OMEGA SEMICONDUCTOR PRODUCTS ARE NOT AUTHORIZED FOR USE AS CRITICAL COMPONENTS IN LIFE SUPPORT DEVICES OR SYSTEMS.

As used herein:

1. Life support devices or systems are devices or systems which, (a) are intended for surgical implant into the body or (b) support or sustain life, and (c) whose failure to perform when properly used in accordance with instructions for use provided in the labeling, can be reasonably expected to result in a significant injury of the user.
2. A critical component in any component of a life support, device, or system whose failure to perform can be reasonably expected to cause the failure of the life support device or system, or to affect its safety or effectiveness.