



PRODUCT OVERVIEW

The ADSD-1420S is a functionally complete, dual 14-bit, 20MSPS, sampling A/D converter. Its standard, 40-pin, triple-wide SMT DIP contains two fast-settling sample/hold amplifiers, two 14-bit A/D converters, multiplexed output buffers, a precision reference, and all the timing and control logic necessary to operate from either two or a single start convert pulse.

The ADSD-1420S is optimized for wideband frequency-domain applications and is fully FFT tested. The ADSD-1420S requires only $\pm 5V$ supplies and typically consumes 1.6 Watts. The digital output power supply is capable of directly driving 5V or 3V logic systems. Models are available in either commercial 0 to $+70^{\circ}C$ or military -55 to $+125^{\circ}C$ operating temperature ranges.

FEATURES

- 14-bit resolution; 20MSPS sampling rate
- Functionally complete; $\pm 2.5V$ input range
- No missing codes over full temperature range
- Edge-triggered
- $\pm 5V$ supplies, 1.6 Watts
- 75dB SNR, $-80dB$ THD
- Ideal for both time and frequency-domain applications

INPUT/OUTPUT CONNECTIONS

PIN	FUNCTION	PIN	FUNCTION
1	INPUT A	40	INPUT B
2	+5VA	39	+5VA
3	ANALOG GROUND	38	ANALOG GROUND
4	N.C.	37	N.C.
5	OFFSET A	36	OFFSET B
6	RANGE	35	N.C.
7	1.55V REF	34	EOC A
8	ANALOG GROUND	33	ANALOG GROUND
9	-5V	32	-5V
10	ENABLE A	31	ENABLE B

PIN	FUNCTION	PIN	FUNCTION
11	START A	30	START B
12	VDD	29	EOC B
13	BIT 14 (LSB)	28	BIT 1 (MSB)
14	BIT 13	27	BIT 2
15	BIT 12	26	BIT 3
16	BIT 11	25	BIT 4
17	BIT 10	24	BIT 5
18	BIT 9	23	BIT 6
19	BIT 8	22	BIT 7
20	DGND	21	DGND

FUNCTIONAL BLOCK DIAGRAM

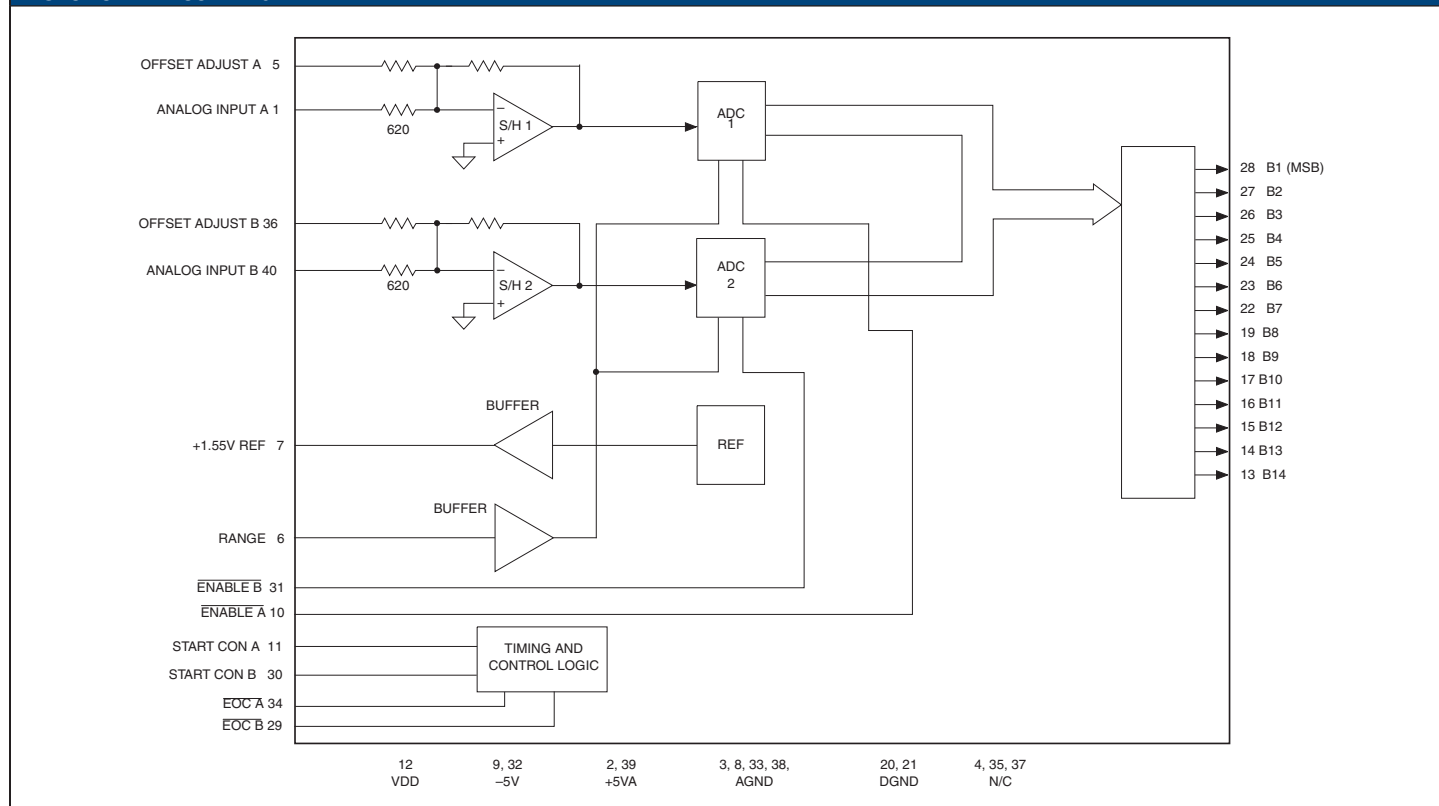


Figure 1. ADSD-1420S Functional Block Diagram

ABSOLUTE MAXIMUM RATINGS

PARAMETERS	LIMITS	UNITS
+5Vcc Supply (Pins 2, 39)	0 to +6	Volts
–5VEE Supply (Pins 9, 32)	0 to –6	Volts
VDD Supply (Pin 12)	–0.3 to (VCC +0.3)	Volts
Digital Inputs (Pins 10, 11, 30, 31)	–0.3 to (VDD +0.3)	Volts
Analog Input (Pins 1, 40)	±7	Volts
Lead Temp. (10 seconds)	+300	°C

FUNCTIONAL SPECIFICATIONS

($T_A = +25^\circ\text{C}$, $V_{CC} = +5\text{V}$, $V_{DD} = +5\text{V}$, $V_{EE} = -5\text{V}$, 20MSPS sampling rate, $V_{in} = \pm 2.5\text{V}$ and a minimum 7 minute warmup unless otherwise specified.)

ANALOG INPUTS		MIN.	TYP.	MAX.	UNITS
Input Voltage Range		—	±2.5V	—	Volts
Input Impedence		610	620	630	Ω
Input Capacitance		—	7	15	pF
DIGITAL INPUTS					
Logic Levels					
Logic "1"		+2.4	—	—	Volts
Logic "0"		—	—	+0.8	Volts
Logic Loading "1"		—	—	+10	μA
Logic Loading "0"		—	—	−10	μA
PERFORMANCE					
Integral Non-Linearity					
+25°C (fin=10kHz)		—	±1	—	LSB
0 to +70°C		—	±1	—	LSB
−55 to +125°C		—	±2	—	LSB
Differential Non-Linearity (fin = 10kHz)					
+25°C		−0.99	±0.5	+1.5	LSB
0 to +70°C		−0.99	±0.5	+1.5	LSB
−55 to +125°C		−0.99	±0.75	+1.75	LSB
Offset Error					
+25°C (see Figure 3)		—	±0.25	±0.5	%FSR
0 to +70°C		—	±0.25	±0.5	%FSR
−55 to +125°C		—	±0.5	±0.8	%FSR
Gain Error					
+25°C (see Figure 3)		—	±0.3	±0.6	%FSR
0 to +70°C		—	±0.3	±0.6	%FSR
−55 to +125°C		—	±0.6	±0.8	%FSR
No Missing Codes 14 Bits		−55 to +125°C			
Resolution		14 Bits			
OUTPUTS					
Output Coding		Offset Bin.			
Logic Level					
Logic "1" VDD = +5V		+3.8	—	—	Volts
VDD = +3.3V		+2.48	—	—	Volts
Logic "0" VDD = +5V		—	—	+0.5	Volts
VDD = +3.3V		—	—	+0.5	Volts
Logic Loading "1" VDD = +5V		—	—	−8	mA
VDD = +3.3V		—	—	−4	mA
Logic Loading "0" VDD = +5V		—	—	+8	mA
VDD = +3.3V		—	—	+4	mA
Internal Reference					
Voltage, +25°C		+1.5	+1.55	+1.6	Volts
0 to +70°C		+1.5	+1.55	+1.6	Volts
External Current		—	—	5	mA

DYNAMIC PERFORMANCE	MIN.	TYP.	MAX.	UNITS
Total Harm. Distort. (−0.5dB)				
dc to 500kHz	—	−81	−77	dB
500kHz to 10MHz	—	−80	−74	dB
Signal-to-Noise Ratio (w/o distortion, −0.5dB)				
dc to 500kHz	73	75	—	dB
500kHz to 10MHz	73	75	—	dB
Signal-to-Noise Ratio (and distortion, −0.5dB)				
dc to 500kHz	71	74	—	dB
500kHz to 10MHz	71	74	—	dB
Spurious Free Dyn. Range ①				
dc to 500kHz	—	−83	−80	dB
500kHz to 10MHz	—	−82	−76	dB
Two-tone IMD				
Distortion ($f_{in} = 9.68\text{MHz}$, $f_s = 20\text{MHz}$, −0.5dB)	—	−78	—	dB
Input Bandwidth (−3dB)				
Small Signal (−20dB input)	—	25	—	MHz
Large Signal (−0.5dB input)	—	25	—	MHz
Aperture Delay Time	—	—	±10	ns
Aperture Uncertainty	—	0.4	—	ps, RMS
S/H Acq. Time, (to ±0.003%FSR)				
Step input	—	—	25	ns
Feedthrough Rejection ($f_{in} = 10\text{MHz}$)	—	85	—	dB
Noise	—	250	—	μVrms
TIMING SPECIFICATIONS				
Conversion Rate	1	—	20	MHz
Start Convert High	20	25	500	ns
Start Convert Low	20	25	500	ns
Start Convert to EOC				
EOC to Data Valid				
Output Disable Delay	1	6	13	ns
POWER REQUIREMENTS				
Power Supply Ranges				
−5V _{EE} Supply	−5.25	−5.0	−4.75	Volts
+5V _{CC} Supply	+4.75	+5.0	+5.25	Volts
V _{DD} Supply	+3.0	+5.0	V _{CC}	Volts
Power Supply Currents				
−5V _{EE} Supply	−100	−89	—	mA
+5V _{CC} Supply	—	+230	+245	mA
V _{DD} Supply	—	+2.0	+5.0	mA
Power Dissipation	—	1.6	1.7	Watts
Power Supply Rejection	—	—	±0.01	%FSR/V
PHYSICAL/ENVIRONMENTAL				
Oper. Temp. Range, Ambient				
ADSD-1420S	0	—	+70	°C
ADSD-1420S-EX	−55	—	+125	°C
Storage Temperature Range	−65	—	+150	°C
Package Type	40-pin. SMT TQFP			

Footnote:

① Same specification as In-Band Harmonics and Peak Harmonics.

TECHNICAL NOTES

1. Rated performance requires using good high-frequency circuit board layout techniques. Connect the digital and analog grounds to one point, the analog ground plane beneath the converter. Due to the inductance and resistance of the power supply return paths, return the analog and digital ground separately to the power supplies.

CALIBRATION PROCEDURE

1. Connect the converter per Figure 3. Apply a pulse of 50 nanoseconds typical to START CONVERT (pin 11) at a rate of 2MHz. This rate is chosen to reduce flicker if LED's are used on the outputs for calibration purposes.
2. **Zero (Offset) Adjustments**
Apply a precision voltage reference source between ANALOG INPUT A (pin 1) and SIGNAL GROUND (pin 3), then adjust the reference source output per Table 2. Adjust trimpot R1 until the code flickers equally between 10 0000 0000 0000 and 10 0000 0000 0001.
3. Repeat above step for Analog Input B (Pin 40). Use trimpot R2 for the zero (Offset) adjustment.

Table 2. Offset Adjustment

INPUT RANGE	OFFSET ADJUST +1/2 LSB
$\pm 2.5V$	+0.000153V

Table 3. Output Coding

OUTPUT CODING MSB	LSB	INPUT RANGE $\pm 2.5V$	BIPOLAR SCALE
11	1111 1111 1111	+2.499695	+FS - 1LSB
11	1000 0000 0000	+1.875000	+3/4FS
11	0000 0000 0000	+1.250000	+1/2FS
10	0000 0000 0000	± 0.000000	0
01	0000 0000 0000	-1.250000	-1/2FS
00	1000 0000 0000	-1.875000	-3/4FS
00	0000 0000 0001	-2.499695	-FS+1LSB
00	0000 0000 0000	-2.500000	-FS

4. To confirm proper operation of the device, vary the precision reference voltage source to obtain the output coding listed in Table 3.

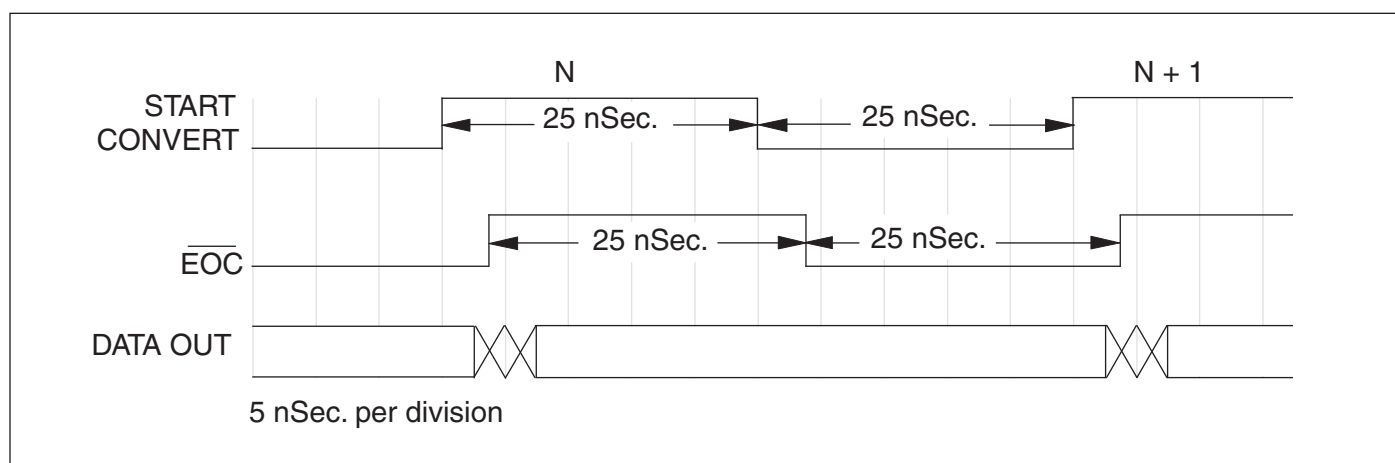


Figure 2. ADSD-1420S Timing Diagram

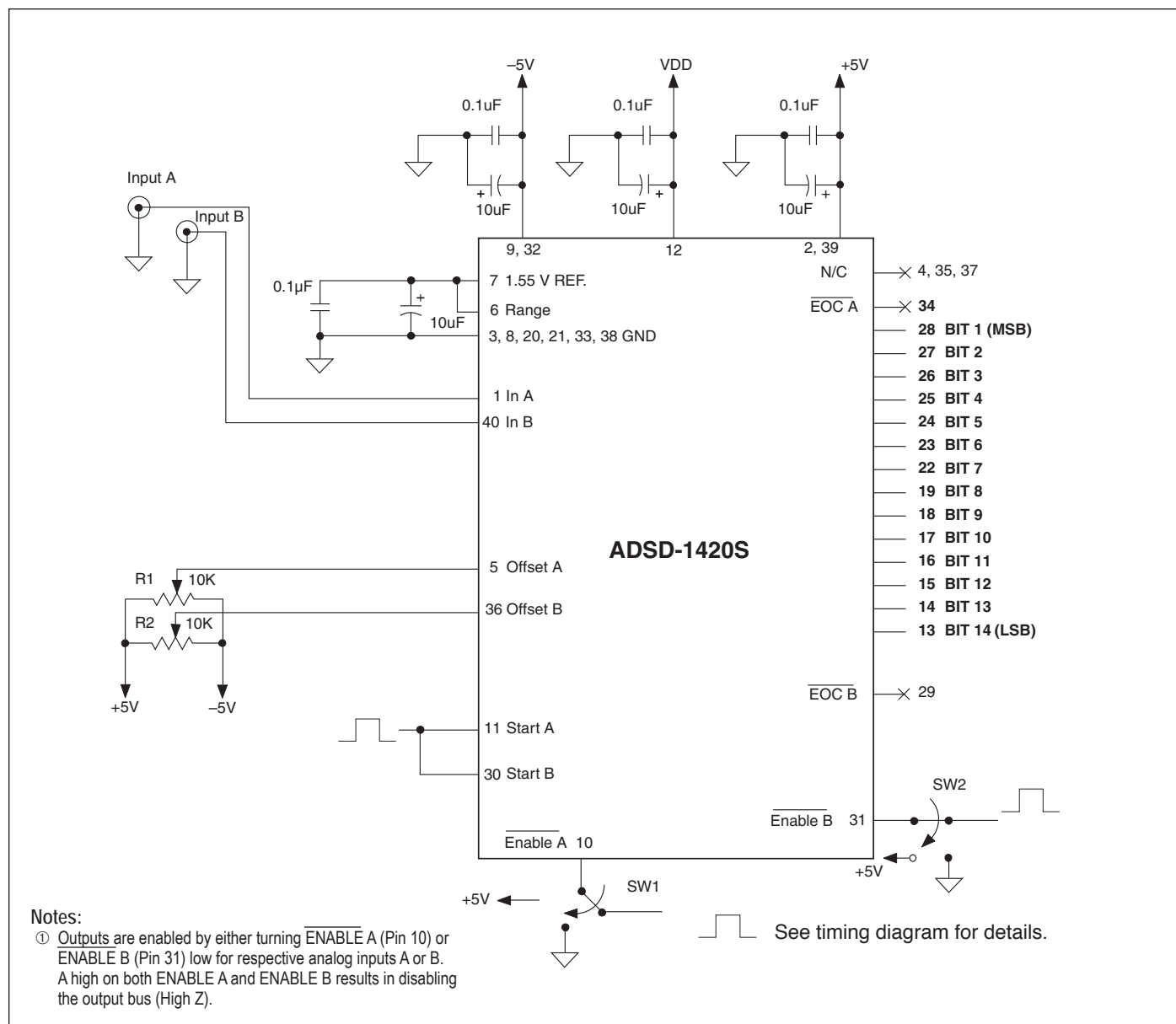


Figure 3. ADSD-1420S Connection Diagram

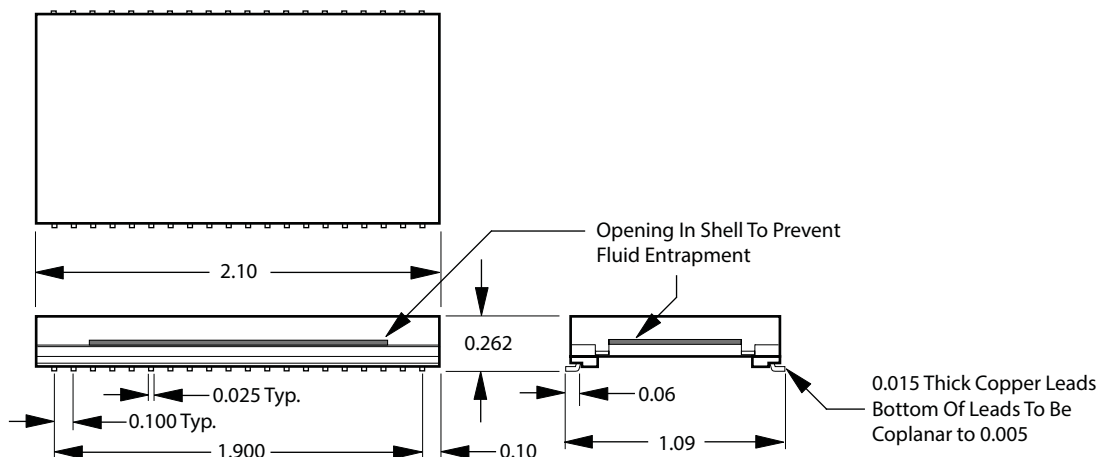
THERMAL REQUIREMENTS

The ADSD-1420S sampling A/D converter is fully characterized and specified over the commercial operating temperature (ambient) range of 0 to +70°C and military temperature range of -55 to +125°C (EX suffix). All room-temperature ($T_A = +25^\circ\text{C}$) production testing is performed without the use of heat sinks or forced-air cooling. Thermal impedance figures for each device are listed in their respective specification tables.

These devices do not normally require heat sinks, however, standard precautionary design and layout procedures should

be used to ensure devices do not overheat. The ground and power planes beneath the package, as well as all pcb signal runs to and from the device, should be as heavy as possible to help conduct heat away from the package. Electrically-insulating, thermally-conductive "pads" may be installed underneath the package. Minimal air flow over the surface can greatly help reduce the package temperature.

MECHANICAL DIMENSIONS INCHES (MM)

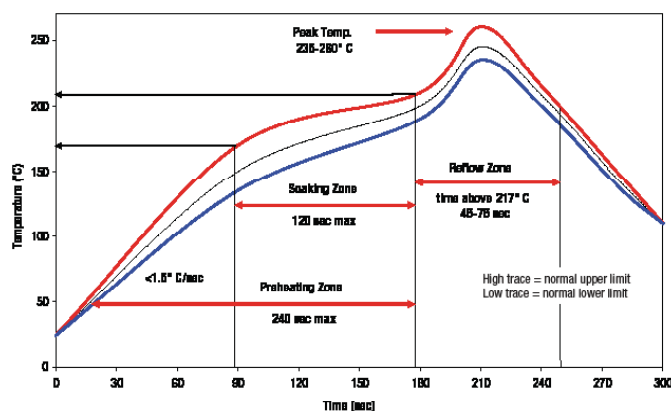


Soldering Guidelines

DATEL recommends the specifications below when installing these converters. These specifications vary depending on the solder type. Exceeding these specifications may cause damage to the product. Your production environment may differ therefore please thoroughly review these guidelines with your process engineers.

REFLOW SOLDER OPERATIONS FOR SURFACE-MOUNT PRODUCTS (SMT)	
For Sn/Ag/Cu based solders:	
Preheat Temperature	Less than 1 °C. per second
Time over Liquidus	45 to 75 seconds
Maximum Peak Temperature	260 °C.
Cooling Rate	Less than 3 °C. per second
For Sn/Pb based solders:	
Preheat Temperature	Less than 1 °C. per second
Time over Liquidus	60 to 75 seconds
Maximum Peak Temperature	235 °C.
Cooling Rate	Less than 3 °C. per second

Recommended Lead-free Solder Reflow Profile



ORDERING INFORMATION

MODEL NUMBER	OPERATING TEMP. RANGE
ADSD-1420S	0 to +70°C
ADSD-1420S-EX	-55 to +125°C

Contact Datel for high-reliability versions.

DATEL is a registered trademark of DATEL, Inc.
11 Cabot Boulevard, Mansfield, MA 02048-1151 USA
ITAR and ISO 9001/14001 REGISTERED

DATEL, Inc. makes no representation that the use of its products in the circuits described herein, or the use of other technical information contained herein, will not infringe upon existing or future patent rights. The descriptions contained herein do not imply the granting of licenses to make, use, or sell equipment constructed in accordance therewith. Specifications are subject to change without notice.

© 2015 DATEL, Inc.