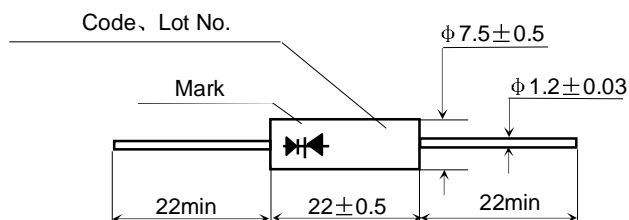
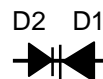


■ Features

- small size
- High reliability
- High current capability.

■ Outline Dimensions and Mark

Unit: mm



■ Applications

- Rectification for high voltage circuit in micro wave oven and others.

Type	2CLS01	2CLS02	2CLS03
Code	TS01	TS02	TS03

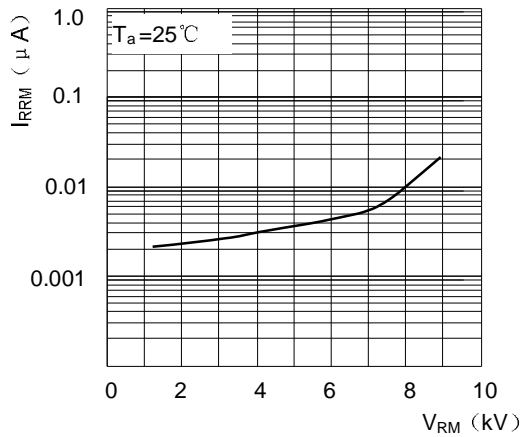
■ Limiting Values (Absolute Maximum Rating)

Item	Symbol	Unit	2CLS01		2CLS02		2CLS03	
			D1	D2	D1	D2	D1	D2
Repetitive Peak Reverse Voltage	V_{RRM}	kV	6	1.7	6	1.5	6	1.3
Virtual Junction Temperature	$T_{(vj)}$	°C	130					
Storage Temperature	T_{stg}	°C	-40 ~ +130					

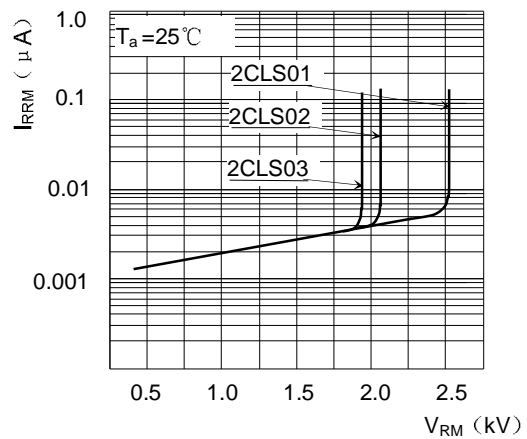
■ Electrical Characteristics ($T_a=25^{\circ}\text{C}$ Unless otherwise specified)

Item	Symbol	Unit	Test Condition	2CLS01		2CLS02		2CLS03	
				D1	D2	D1	D2	D1	D2
Peak Reverse Current	I_{RRM1}	μA	$V_{RM}=V_{RRM}$	≤ 10					
Avalanche Breakdown Voltage	$V_{(BR)}$	kV	$I_R=100\mu\text{A}$	≥ 7	2.1-2.8	≥ 7	1.8-2.4	≥ 7	1.5-2.1

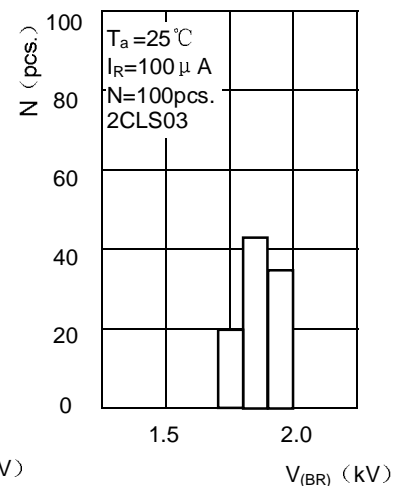
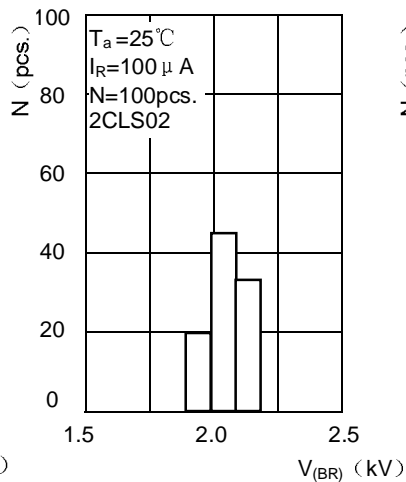
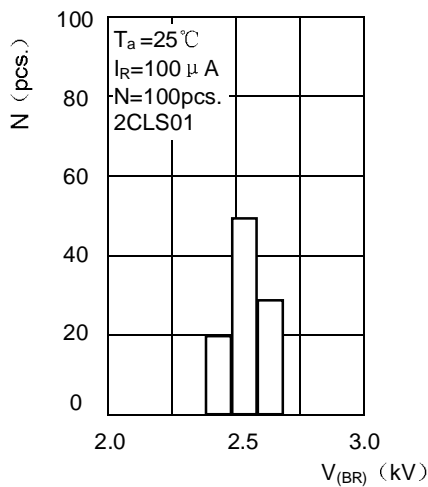
■ **Characteristics(Typical)**



Reverse Characteristics for D1

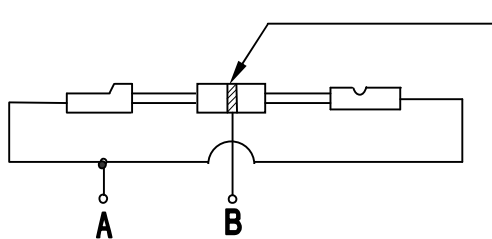


Reverse Characteristics for D2



Reverse Breakdown Voltage Distribution of D2

● **Safety Test**



3mm Wide metal film is rolled on the surface middle of diode body

1. Insulation Resistance Test: 500V DC voltage is added between A and B. The measurement by insulation resistance meter is big than 1000M Ω .

2. Resistance To Voltage Strength Test: 15kV half-sine wave voltage is added between A and B for one minute and no breakdown or arc in insulation oil.