

10/100 BASE-T TRANSFORMER MODULES

- F** **C**ompliant With IEEE 802.3 standards including Baseline Wander Compensation specification of 350uH OCL when biased at 8mA from 0°C to 70°C
- F** **S**ingle Channel Interface For 10/100Mbps Ethernet Applications with CMC's tuned to enhance EMC system performance.
- F** **F**or RoHS Part Add Suffix G.

RoHS
Compliant



ELECTRICAL SPECIFICATIONS @ 25°C (Operating Temperature 0°C to 70°C)

Part Number	Insertion Loss (dB max)		Return Loss (dB min)			CMRR (dB min)			Crosstalk (dB min)	
	0.3-100MHz	0.3-30MHz	40MHz	50MHz	60-80MHz	0.3-30MHz	60MHz	80-100MHz	0.3-60MHz	60-100MHz
H16101DF	-1.1	-18	-16	-14.5	-12	-40	-35	-30	-42	-35
H16102DF	-1.1	-18	-16	-14.5	-12	-40	-35	-30	-42	-35
H16103DF	-1.1	-18	-16	-14.5	-12	-40	-35	-30	-42	-35
H16104DF	-1.1	-18	-16	-14.5	-12	-40	-35	-30	-42	-35
H16106DF	-1.1	-18	-16	-14.5	-12	-40	-35	-30	-42	-35
H16107DF	-1.1	-18	-16	-14.5	-12	-40	-35	-30	-42	-35
H16108DF	-1.1	-18	-16	-14.5	-12	-40	-35	-30	-42	-35
H16109DF	-1.1	-18	-16	-14.5	-12	-40	-35	-30	-42	-35
H16110DF	-1.1	-18	-16	-14.5	-12	-40	-35	-30	-42	-35
H16111DF	-1.1	-18	-16	-14.5	-12	-40	-35	-30	-42	-35
H16112DF	-1.1	-18	-16	-14.5	-12	-40	-35	-30	-42	-35
H16113DF	-1.1	-18	-16	-14.5	-12	-40	-35	-30	-42	-35
H16114DF	-1.1	-18	-16	-14.5	-12	-40	-35	-30	-42	-35
H16115DF	-1.1	-18	-16	-14.5	-12	-40	-35	-30	-42	-35
H16116DF	-1.1	-18	-16	-14.5	-12	-40	-35	-30	-42	-35
H16117DF	-1.1	-18	-16	-14.5	-12	-40	-35	-30	-42	-35

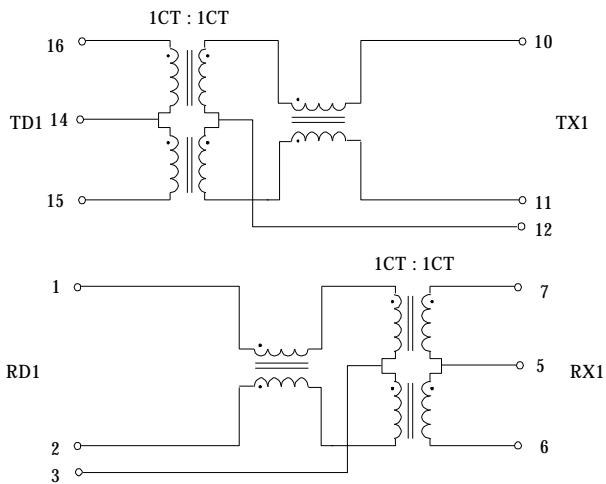
Note :

* Operating Temperature : -40°C to 85°C
All models meet Isolation Voltage (HiPot) of 1500Vrms

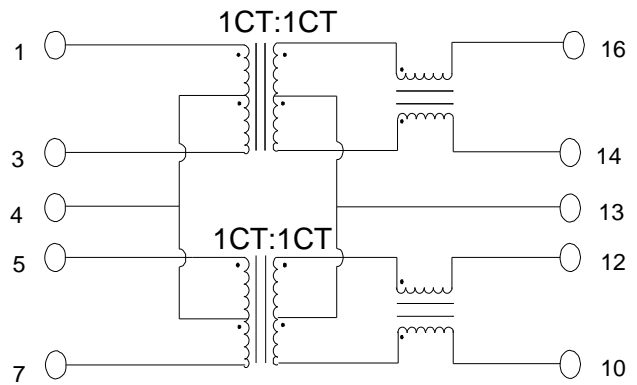
10/100 BASE-T TRANSFORMER MODULES

SCHEMATICS (Continued)

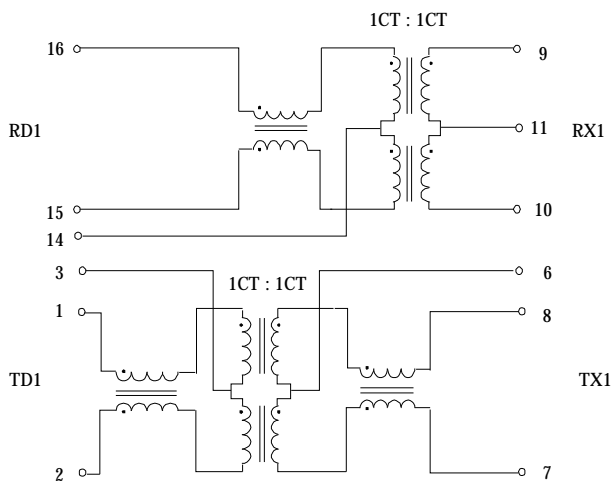
H16101DF



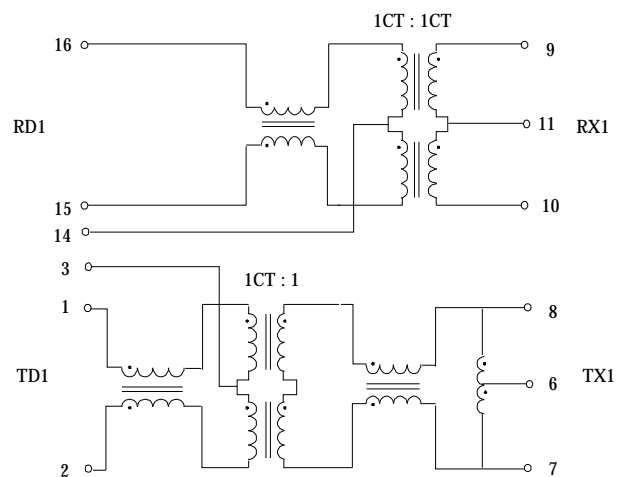
H16102DF



H16103DF



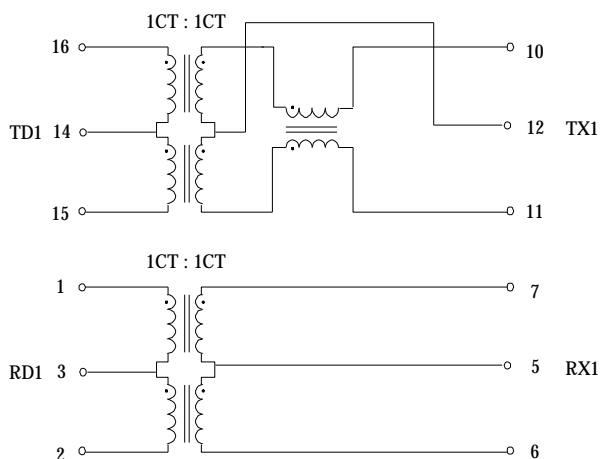
H16104DF



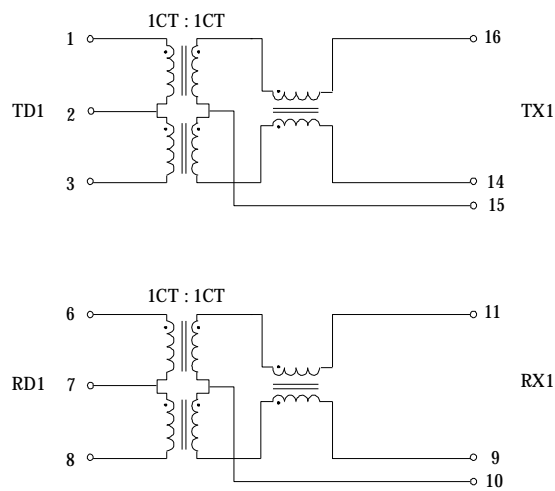
10/100 BASE-T TRANSFORMER MODULES

SCHEMATICS (Continued)

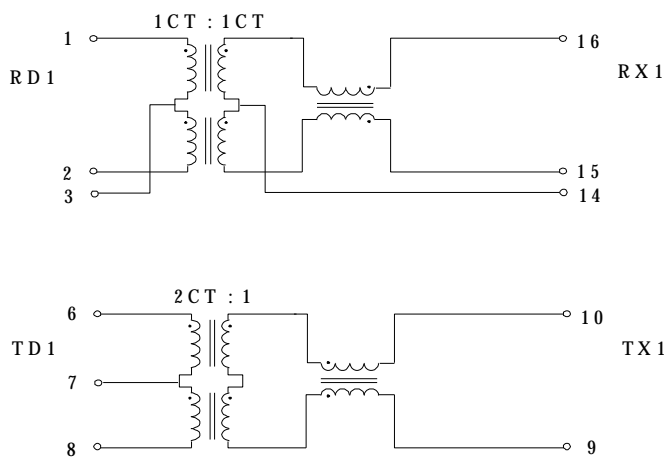
H16106DF



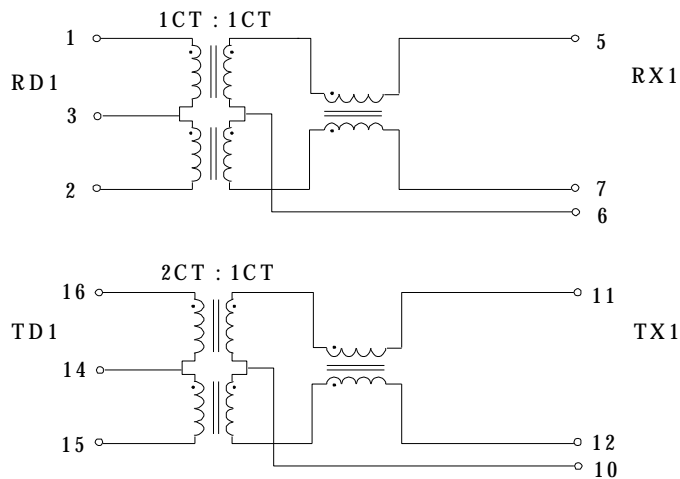
H16107DF



H16108DF



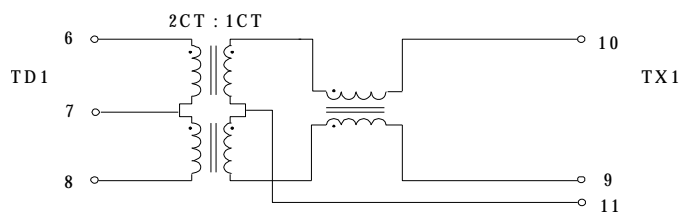
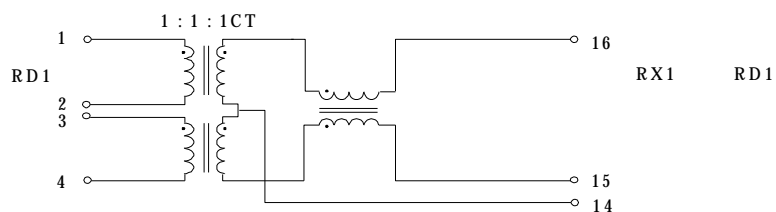
H16109DF



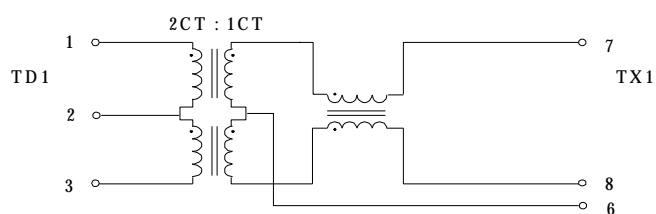
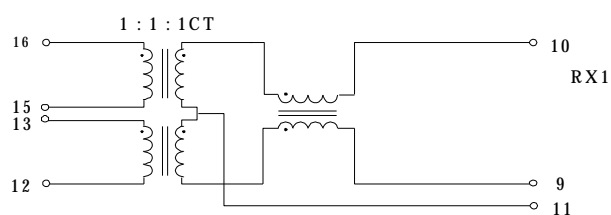
10/100 BASE-T TRANSFORMER MODULES

SCHEMATICS (Continued)

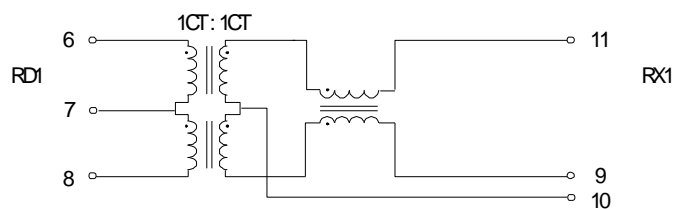
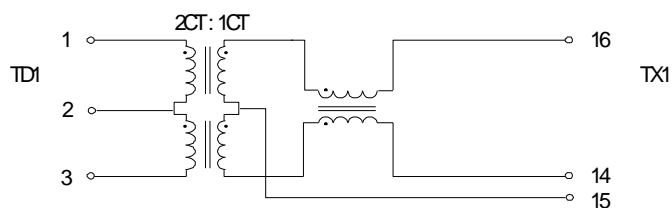
H16110DF



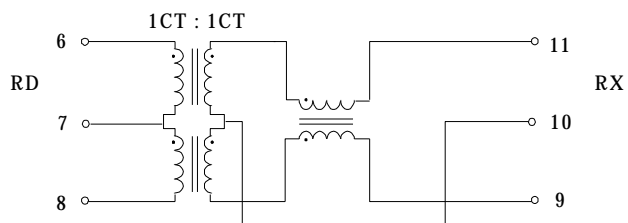
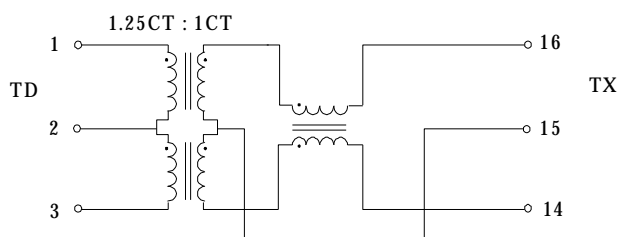
H16111DF



H16112DF



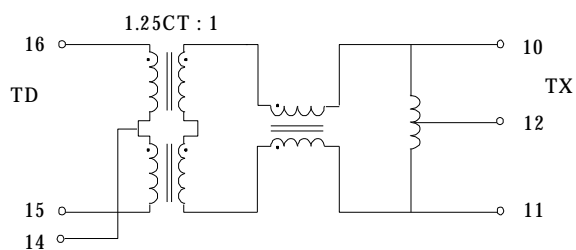
H16113DF



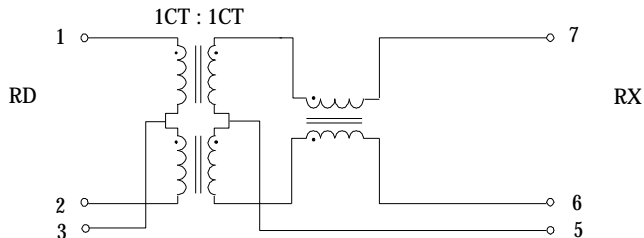
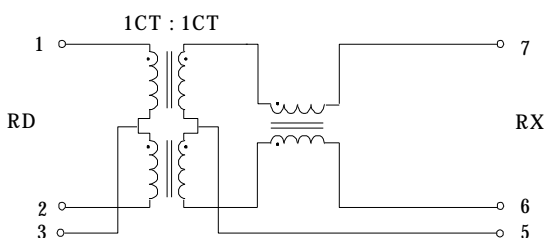
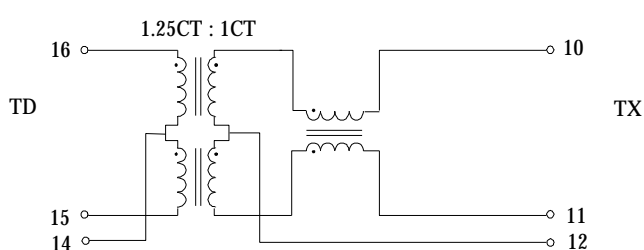
10/100 BASE-T TRANSFORMER MODULES

SCHEMATICS (Continued)

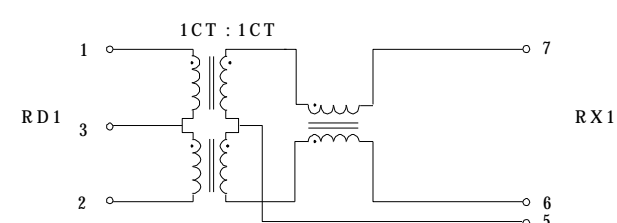
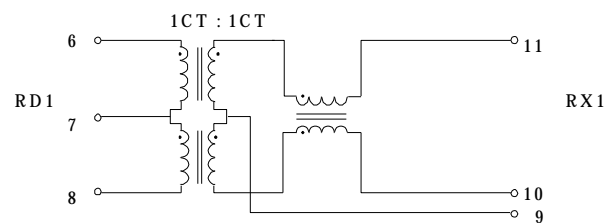
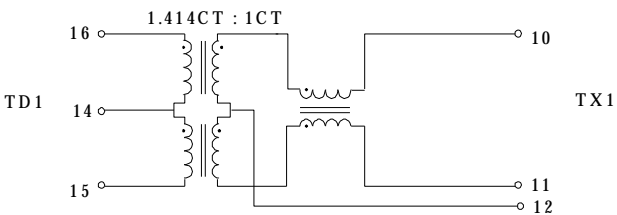
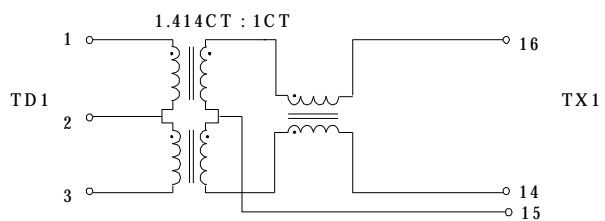
H16114DF



H16115DF



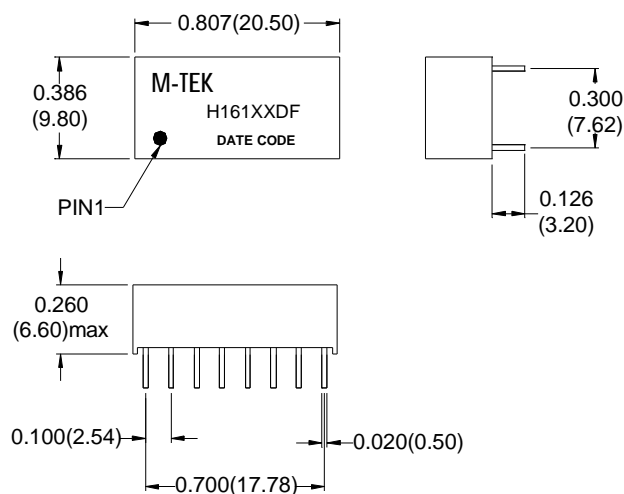
H16116DF



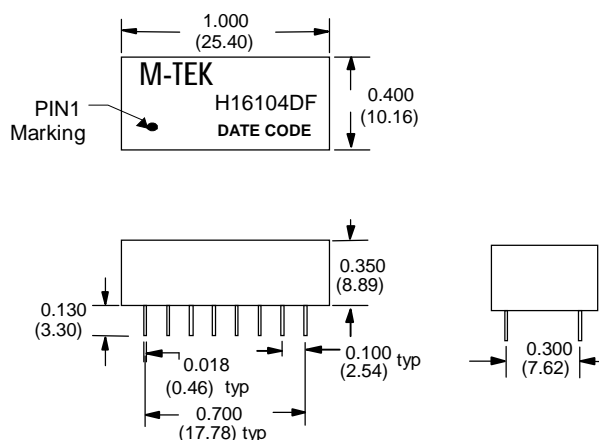
10/100 BASE-T TRANSFORMER MODULES

MECHANICAL SPECIFICATIONS (Continued)

H161XXDF 系列



H16104DF



H16101DF:PIN4&13&8&9 OMITTED , H16103DF:PIN4&5&12&13 OMITTED

H16106DF:PIN4&13&8&9 OMITTED , H16104DF:PIN4,5&12,13 OMITTED

DIMENSIONS INCHES/(mm) ; UNLESS OTHERWISE SPECIFIED ALL TOLERANCES ARE $\pm 0.01(0.25)$.

Head Office
MAGTEK TECHNOLOGY INC.
Tel : 886-3-3694878
Fax: 886-3-3690778

ShenZhen Office
MAGTEK TECHNOLOGY INC.
Tel : 286-755-83347151
Fax: 286-755-83363151

China Factory
MAGTEK INTERNATIONAL INC.
Tel : 286-769-886636536
Fax: 286-769-886326256