

PLEASE CHECK WWW.MOLEX.COM FOR LATEST PART INFORMATION

Part Number:

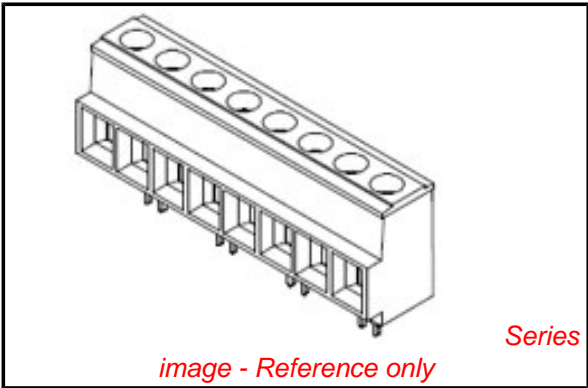
0399100307

Status:

Active

Description:

10.16mm (.400") Beau™ Eurostyle™, Fixed Mount PCB Terminal Block, High Voltage, High Power 40A, 7 Circuits



Documents:	
3D Model	RoHS Certificate of Compliance (PDF)
Drawing (PDF)	

Agency Certification	
UL	E48521
General	
Product Family	Terminal Blocks
Series	39910
Application	Wire-to-Board
Component Type	One Piece
Product Literature Order No	USA-199
Product Name	Eurostyle™ Fixed Mount
Type	Euro Block
Physical	
Circuits (Loaded)	7
Circuits (maximum)	7
Color - Resin	Black
Entry Angle	Horizontal
Flammability	94V-0
Lock to Mating Part	None
Material - Metal	Brass, Copper
Material - Plating Mating	Tin
Material - Plating Termination	Tin
Material - Resin	Polyester
Number of Rows	1
Orientation	Vertical
PC Tail Length (in)	0.160 In
PC Tail Length (mm)	4.10 mm
PCB Retention	None
Panel Mount	No
Pitch - Mating Interface (in)	0.400 In
Pitch - Mating Interface (mm)	10.16 mm
Pitch - Term. Interface (in)	0.400 In
Pitch - Term. Interface (mm)	10.16 mm
Plating min: Mating (µin)	150
Plating min: Mating (µm)	3.75
Plating min: Termination (µin)	150
Plating min: Termination (µm)	3.75
Polarized to Mating Part	Yes
Shrouded	Fully
Stackable	No
Surface Mount Compatible (SMC)	No
Temperature Range - Operating	130°C
Termination Interface: Style	Through Hole
Wire Size AWG	10, 12, 14, 16, 18, 8
Wire Size mm²	0.75 - 6.0
Electrical	

EU RoHS

ELV and RoHS

Compliant

REACH SVHC

Not Reviewed

Halogen-Free

Status

Not Reviewed

China RoHS



Need more information on product environmental compliance?

Email productcompliance@molex.com

For a multiple part number RoHS Certificate of Compliance, [click here](#)

Please visit the [Contact Us](#) section for any non-product compliance questions.

Search Parts in this Series

39910Series

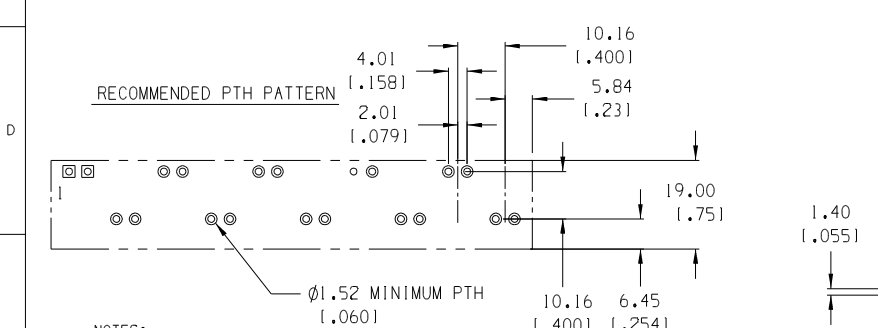
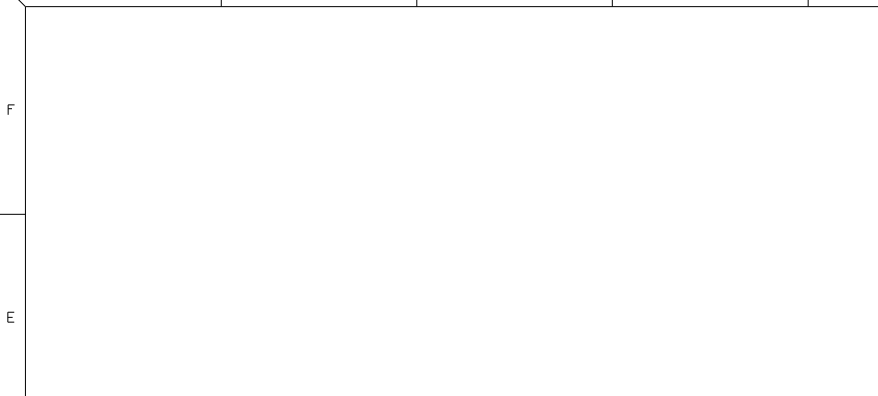
Mates With

N/A

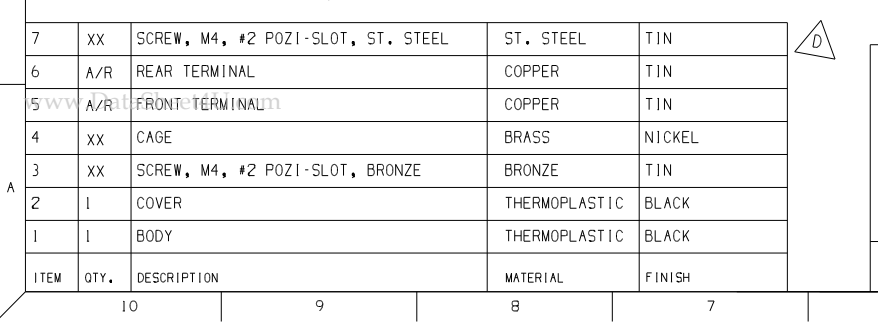
Current - Maximum per Contact	40A	www.Datasheet.com
Voltage - Maximum	600V	
Material Info		
Old Part Number	913507	
Reference - Drawing Numbers		
Sales Drawing	SD-39910-002	

www.Datasheet.com

This document was generated on 04/27/2010
PLEASE CHECK WWW.MOLEX.COM FOR LATEST PART INFORMATION



- | | | | |
|---|----------------------------------------------------------|--|----------|
| B | NOTES: | | |
| | 1. MATERIAL: SEE TABLE | | 2.01 TYP |
| | 2. FINISHES: SEE TABLE | | [.079] |
| | 3. PRODUCT SPECIFICATION: NOT REQUIRED | | |
| | 4. PACKAGING: NOT REQUIRED | | 5.8 |
| | 5. MATES WITH: NONE | | [.23] |
| | 6. PART IS DESIGNED TO MEET UL 1059 CLASS C
600V, 40A | | |
| | 7. STAGGERED PC TAIL POSITION ON ALTERNATE
CIRCUITS | | |
| | 8. "XX" REFERS TO NUMBER OF CIRCUITS | | |
| | 9. FOR OPTIONAL IMPRINTING, REFER TO SD-38120-005 | | |



B 7. STAGGERED PC TAIL POSITION ON ALTERNATE CIRCUITS
8. "XX" REFERS TO NUMBER OF CIRCUITS
9. FOR OPTIONAL IMPRINTING, REFER TO SD-38120-005

7	XX	SCREW, M4, #2 POZI-SLOT, ST. STEEL	ST. STEEL	TIN	D
6	A/R	REAR TERMINAL	COPPER	TIN	

5	A/R	FRONT TERMINAL	COPPER	TIN
4	XX	CAGE	BRASS	NICKEL

A	3	XX	SCREW, M4, #2 POZI-SLOT, BRONZE	BRONZE	TIN
	2	1	COVER	THERMOPLASTIC	BLACK
	1	1	BODY	THERMOPLASTIC	BLACK

ITEM			QTY.			DESCRIPTION			MATERIAL			FINISH		
10			9			8			7					

	10	9	8	7	6	5	4	3	2	SD-39910-002
F										
E										
D										
C										
B										
A										

MATERIAL	MATERIAL NUMBER	MATERIAL NUMBER	MATERIAL NUMBER	MATERIAL NUMBER	MATERIAL NUMBER	MATERIAL NUMBER	NUMBER	"A" DIM.	"B" DIM.
STD	OPTIONAL 10A IMPRINT	OPTIONAL 11A IMPRINT	OPTIONAL 1-56 SS SCREW	OPTIONAL SLOTTED SCREW	OPTIONAL SLOTTED SCREW W/10A IMPRINT	OPTIONAL SLOTTED SCREW W/11A IMPRINT	OF CIRCUITS		
399100302	399110302	399140302	399100602	399100502	399110502	399140502	2	21.84 [1.86]	10.16 [1.400]
399100303	399110303	399140303	399100603	399100503	399110503	399140503	3	32.00 [1.26]	20.32 [1.800]
399100304	399110304	399140304	399100604	399100504	399110504	399140504	4	42.16 [1.66]	30.48 [1.200]
399100305	399110305	399140305	399100605	399100505	399110505	399140505	5	52.32 [2.06]	40.64 [1.600]
399100306	399110306	399140306	399100606	399100506	399110506	399140506	6	62.48 [2.46]	50.80 [2.000]
399100307	399110307	399140307	399100607	399100507	399110507	399140507	7	72.64 [2.86]	60.96 [2.400]
399100308	399110308	399140308	399100608	399100508	399110508	399140508	8	82.80 [3.26]	71.12 [2.800]
399100309	399110309	399140309	399100609	399100509	399110509	399140509	9	92.96 [3.66]	81.28 [3.200]
399100310	399110310	399140310	399100610	399100510	399110510	399140510	10	103.12 [4.06]	91.44 [3.600]
399100311	399110311	399140311	399100611	399100511	399110511	399140511	11	113.28 [4.46]	101.60 [4.000]
399100312	399110312	399140312	399100612	399100512	399110512	399140512	12	123.44 [4.86]	111.76 [4.400]
399100313	399110313	399140313	399100613	399100513	399110513	399140513	13	133.60 [5.26]	121.92 [4.800]
399100314	399110314	399140314	399100614	399100514	399110514	399140514	14	143.76 [5.66]	132.08 [5.200]

EC NO. SEE SHEET DRAWN: ONE CHK: K1 APPR: S	QUALITY SYMBOLS MAJOR CRITICAL SPC S	GENERAL TOLERANCES: (UNLESS SPECIFIED) mm INCH 4 PLACES ±.038 ±.0015 3 PLACES ±.038 ±.005 2 PLACES ±.13 ±.01 1 PLACE ±.3 ANGULAR: ±2° DRAFT WHERE APPLICABLE MUST REMAIN WITHIN DIMENSIONS	SCALE N/A DRAWN BY & DATE J. FARMER 08-10-04 CHECKED BY & DATE R. STONE 08-10-04 APPROVED BY & DATE GHR 08-10-04 CAD FILENAME 9135XX.PRT	DESIGN UNITS <input type="checkbox"/> mm <input checked="" type="checkbox"/> INCH	THIRD ANGLE PROJECTION	PROJECT NO. -	-	-
						DIMENSIONS: <input checked="" type="checkbox"/> mm INCH <input type="checkbox"/> INCH mm <input type="checkbox"/> mm ONLY	SHT	REV
TITLE: SR BTS 8 AWG ASSY, 600V 40 A						REVISE ON CAD ONLY		
MOLEX INCORPORATED						SHEET NO. 2 OF 2		
MATERIAL NO. SEE CHART						DRAWING NO. SD-39910-002		SIZE B